



Crestone Peak Resources

Well Name:

WARNER 2J-10H-E165

Project Name:

Sec 10 T1N-R65W

Pad Name:

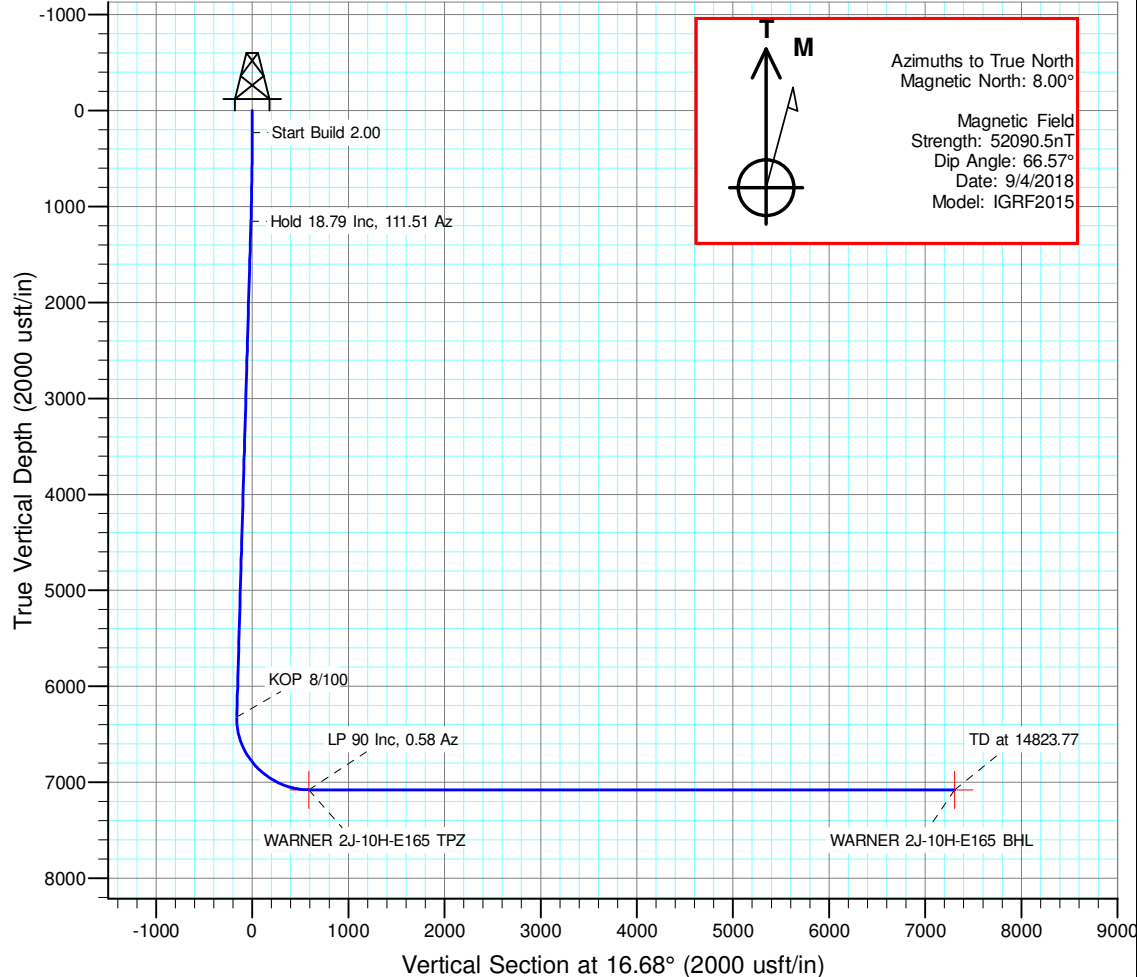
Warner Pad

ANNOTATIONS

MD	Inc	Azi	TVD	+N/-S	+E/-W	VSec	Departure	Annotation
230.00	0.00	0.00	230.00	0.00	0.00	0.00	0.00	Start Build 2.00
1169.62	18.79	111.51	1152.87	-56.00	142.08	-12.85	152.72	Hold 18.79 Inc, 111.51 Az
6626.54	18.79	111.51	6318.89	-700.65	1777.51	-160.81	1910.61	KOP 8/100
7834.16	90.00	0.58	7080.00	8.30	2026.59	589.80	2722.84	LP 90 Inc, 0.58 Az
14823.77	90.00	0.58	7080.00	6997.56	2097.37	7305.12	9712.46	TD at 14823.77

DESIGN TARGET DETAILS

Name	TVD	+N/-S	+E/-W	Northing	Easting	Latitude	Longitude	Shape
WARNER 2J-10H-E165 BHL	7080.00	6997.56	2097.37	1275480.677	3237654.337	40.086461	-104.650610	Point
WARNER 2J-10H-E165 TPZ	7080.00	8.30	2026.59	1268491.061	3237649.921	40.067274	-104.650865	Point

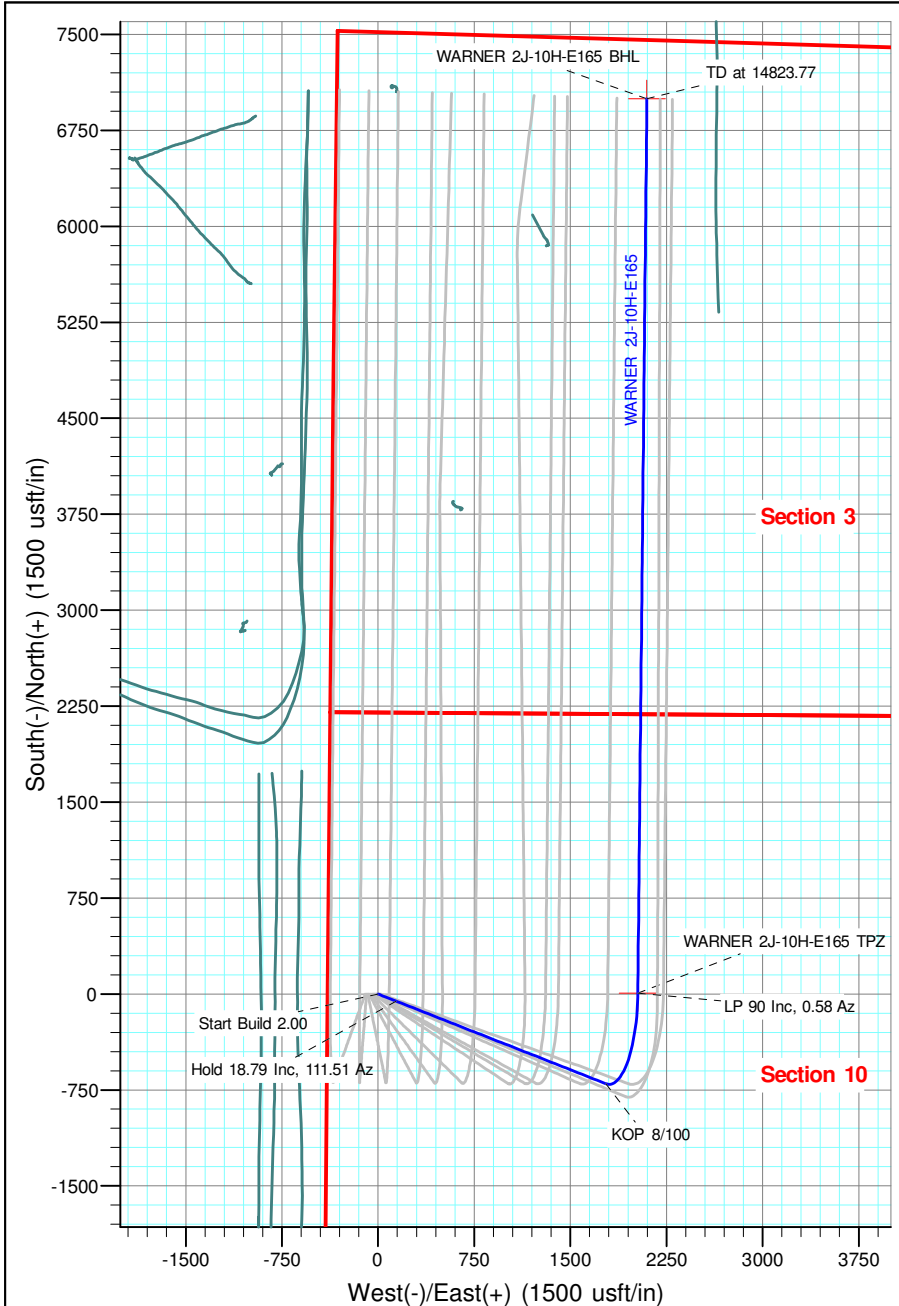


Geodetic Datum:

North American Datum 1983
US State Plane 1983, Colorado Northern Zone

Elevation:

Ground Elevation: 4971.00
KB Elevation: WELL @ 4994.00usft (Original Well Elev)





Crestone Peak Resources

Sec 10 T1N-R65W

Warner Pad

WARNER 2J-10H-E165

Wellbore #1

Plan: Plan #3 27Sep18 kjs

Standard Planning Report - Geographic

28 September, 2018

Database:	EDM 5000.15 Single User Db	Local Co-ordinate Reference:	Well WARNER 2J-10H-E165
Company:	Crestone Peak Resources	TVD Reference:	WELL @ 4994.00usft (Original Well Elev)
Project:	Sec 10 T1N-R65W	MD Reference:	WELL @ 4994.00usft (Original Well Elev)
Site:	Warner Pad	North Reference:	True
Well:	WARNER 2J-10H-E165	Survey Calculation Method:	Minimum Curvature
Wellbore:	Wellbore #1		
Design:	Plan #3 27Sep18 kjs		

Project	Sec 10 T1N-R65W, Wattenberg Field		
Map System:	US State Plane 1983	System Datum:	Mean Sea Level
Geo Datum:	North American Datum 1983		
Map Zone:	Colorado Northern Zone		

Site	Warner Pad				
Site Position:		Northing:	1,268,463.012 usft	Latitude:	40.067253
From:	Lat/Long	Easting:	3,235,523.582 usft	Longitude:	-104.658463
Position Uncertainty:	0.00 usft	Slot Radius:	13-3/16 "	Grid Convergence:	0.54 °

Well	WARNER 2J-10H-E165					
Well Position	+N/-S	0.00 usft	Northing:	1,268,463.520 usft	Latitude:	40.067252
	+E/-W	0.00 usft	Easting:	3,235,623.498 usft	Longitude:	-104.658106
Position Uncertainty		0.00 usft	Wellhead Elevation:		Ground Level:	4,971.00 usft

Wellbore	Wellbore #1				
Magnetics	Model Name	Sample Date	Declination (°)	Dip Angle (°)	Field Strength (nT)
	IGRF2015	9/4/2018	8.00	66.57	52,090.50972493

Design	Plan #3 27Sep18 kjs			
Audit Notes:				
Version:	Phase:	PLAN	Tie On Depth:	0.00
Vertical Section:	Depth From (TVD) (usft)	+N/-S (usft)	+E/-W (usft)	Direction (°)
	0.00	0.00	0.00	16.68

Plan Survey Tool Program	Date	9/28/2018		
Depth From (usft)	Depth To (usft)	Survey (Wellbore)	Tool Name	Remarks
1	0.00	14,823.77 Plan #3 27Sep18 kjs (Wellbore #	MWD	
			OWSG MWD - Standard	

Plan Sections										
Measured Depth (usft)	Inclination (°)	Azimuth (°)	Vertical Depth (usft)	+N/-S (usft)	+E/-W (usft)	Dogleg Rate (°/100usft)	Build Rate (°/100usft)	Turn Rate (°/100usft)	TFO (°)	Target
0.00	0.00	0.00	0.00	0.00	0.00	0.00	0.00	0.00	0.00	
230.00	0.00	0.00	230.00	0.00	0.00	0.00	0.00	0.00	0.00	
1,169.62	18.79	111.51	1,152.87	-56.00	142.08	2.00	2.00	0.00	111.51	
6,626.54	18.79	111.51	6,318.89	-700.65	1,777.51	0.00	0.00	0.00	0.00	
7,834.16	90.00	0.58	7,080.00	8.30	2,026.59	8.00	5.90	-9.19	-109.91	WARNER 2J-10H-E165
14,823.77	90.00	0.58	7,080.00	6,997.56	2,097.37	0.00	0.00	0.00	0.00	WARNER 2J-10H-E165

Database:	EDM 5000.15 Single User Db	Local Co-ordinate Reference:	Well WARNER 2J-10H-E165
Company:	Crestone Peak Resources	TVD Reference:	WELL @ 4994.00usft (Original Well Elev)
Project:	Sec 10 T1N-R65W	MD Reference:	WELL @ 4994.00usft (Original Well Elev)
Site:	Warner Pad	North Reference:	True
Well:	WARNER 2J-10H-E165	Survey Calculation Method:	Minimum Curvature
Wellbore:	Wellbore #1		
Design:	Plan #3 27Sep18 kjs		

Planned Survey									
Measured Depth (usft)	Inclination (°)	Azimuth (°)	Vertical Depth (usft)	+N/-S (usft)	+E/-W (usft)	Map Northing (usft)	Map Easting (usft)	Latitude	Longitude
0.00	0.00	0.00	0.00	0.00	0.00	1,268,463.520	3,235,623.498	40.067252	-104.658106
100.00	0.00	0.00	100.00	0.00	0.00	1,268,463.520	3,235,623.498	40.067252	-104.658106
200.00	0.00	0.00	200.00	0.00	0.00	1,268,463.520	3,235,623.498	40.067252	-104.658106
230.00	0.00	0.00	230.00	0.00	0.00	1,268,463.520	3,235,623.498	40.067252	-104.658106
Start Build 2.00									
300.00	1.40	111.51	299.99	-0.31	0.80	1,268,463.214	3,235,624.297	40.067251	-104.658103
400.00	3.40	111.51	399.90	-1.85	4.69	1,268,461.716	3,235,628.207	40.067247	-104.658090
500.00	5.40	111.51	499.60	-4.66	11.83	1,268,458.970	3,235,635.370	40.067239	-104.658064
600.00	7.40	111.51	598.97	-8.75	22.20	1,268,454.982	3,235,645.778	40.067228	-104.658027
700.00	9.40	111.51	697.89	-14.11	35.79	1,268,449.754	3,235,659.419	40.067213	-104.657978
800.00	11.40	111.51	796.25	-20.73	52.58	1,268,443.294	3,235,676.274	40.067195	-104.657918
900.00	13.40	111.51	893.91	-28.60	72.56	1,268,435.610	3,235,696.325	40.067173	-104.657847
1,000.00	15.40	111.51	990.76	-37.72	95.69	1,268,426.711	3,235,719.545	40.067148	-104.657764
1,100.00	17.40	111.51	1,086.69	-48.07	121.96	1,268,416.607	3,235,745.908	40.067120	-104.657671
1,169.62	18.79	111.51	1,152.87	-56.00	142.08	1,268,408.868	3,235,766.101	40.067098	-104.657599
Hold 18.79 Inc, 111.51 Az									
1,200.00	18.79	111.51	1,181.62	-59.59	151.18	1,268,405.366	3,235,775.239	40.067088	-104.657566
1,300.00	18.79	111.51	1,276.29	-71.41	181.15	1,268,393.838	3,235,805.320	40.067056	-104.657459
1,400.00	18.79	111.51	1,370.96	-83.22	211.12	1,268,382.309	3,235,835.400	40.067023	-104.657352
1,500.00	18.79	111.51	1,465.63	-95.03	241.09	1,268,370.781	3,235,865.481	40.066991	-104.657245
1,600.00	18.79	111.51	1,560.30	-106.85	271.06	1,268,359.253	3,235,895.561	40.066959	-104.657138
1,700.00	18.79	111.51	1,654.97	-118.66	301.03	1,268,347.724	3,235,925.642	40.066926	-104.657031
1,800.00	18.79	111.51	1,749.64	-130.47	331.00	1,268,336.196	3,235,955.723	40.066894	-104.656924
1,900.00	18.79	111.51	1,844.31	-142.29	360.97	1,268,324.668	3,235,985.803	40.066861	-104.656817
2,000.00	18.79	111.51	1,938.98	-154.10	390.94	1,268,313.139	3,236,015.884	40.066829	-104.656709
2,100.00	18.79	111.51	2,033.65	-165.91	420.91	1,268,301.611	3,236,045.965	40.066796	-104.656602
2,200.00	18.79	111.51	2,128.32	-177.73	450.88	1,268,290.083	3,236,076.045	40.066764	-104.656495
2,300.00	18.79	111.51	2,222.98	-189.54	480.85	1,268,278.554	3,236,106.126	40.066732	-104.656388
2,400.00	18.79	111.51	2,317.65	-201.35	510.82	1,268,267.026	3,236,136.206	40.066699	-104.656281
2,500.00	18.79	111.51	2,412.32	-213.17	540.79	1,268,255.498	3,236,166.287	40.066667	-104.656174
2,600.00	18.79	111.51	2,506.99	-224.98	570.76	1,268,243.969	3,236,196.368	40.066634	-104.656067
2,700.00	18.79	111.51	2,601.66	-236.79	600.73	1,268,232.441	3,236,226.448	40.066602	-104.655960
2,800.00	18.79	111.51	2,696.33	-248.61	630.70	1,268,220.912	3,236,256.529	40.066569	-104.655853
2,900.00	18.79	111.51	2,791.00	-260.42	660.67	1,268,209.384	3,236,286.610	40.066537	-104.655746
3,000.00	18.79	111.51	2,885.67	-272.23	690.64	1,268,197.856	3,236,316.690	40.066505	-104.655639
3,100.00	18.79	111.51	2,980.34	-284.05	720.61	1,268,186.327	3,236,346.771	40.066472	-104.655532
3,200.00	18.79	111.51	3,075.01	-295.86	750.58	1,268,174.799	3,236,376.851	40.066440	-104.655424
3,300.00	18.79	111.51	3,169.68	-307.67	780.55	1,268,163.271	3,236,406.932	40.066407	-104.655317
3,400.00	18.79	111.51	3,264.35	-319.49	810.52	1,268,151.742	3,236,437.013	40.066375	-104.655210
3,500.00	18.79	111.51	3,359.02	-331.30	840.49	1,268,140.214	3,236,467.093	40.066342	-104.655103
3,600.00	18.79	111.51	3,453.68	-343.11	870.46	1,268,128.686	3,236,497.174	40.066310	-104.654996
3,700.00	18.79	111.51	3,548.35	-354.93	900.43	1,268,117.157	3,236,527.254	40.066278	-104.654889
3,800.00	18.79	111.51	3,643.02	-366.74	930.40	1,268,105.629	3,236,557.335	40.066245	-104.654782
3,900.00	18.79	111.51	3,737.69	-378.55	960.37	1,268,094.101	3,236,587.416	40.066213	-104.654675
4,000.00	18.79	111.51	3,832.36	-390.37	990.34	1,268,082.572	3,236,617.496	40.066180	-104.654568
4,100.00	18.79	111.51	3,927.03	-402.18	1,020.31	1,268,071.044	3,236,647.577	40.066148	-104.654461
4,200.00	18.79	111.51	4,021.70	-413.99	1,050.28	1,268,059.516	3,236,677.658	40.066115	-104.654354
4,300.00	18.79	111.51	4,116.37	-425.81	1,080.25	1,268,047.987	3,236,707.738	40.066083	-104.654247
4,400.00	18.79	111.51	4,211.04	-437.62	1,110.22	1,268,036.459	3,236,737.819	40.066050	-104.654140
4,500.00	18.79	111.51	4,305.71	-449.44	1,140.19	1,268,024.931	3,236,767.899	40.066018	-104.654032
4,600.00	18.79	111.51	4,400.38	-461.25	1,170.16	1,268,013.402	3,236,797.980	40.065986	-104.653925
4,700.00	18.79	111.51	4,495.05	-473.06	1,200.13	1,268,001.874	3,236,828.061	40.065953	-104.653818
4,800.00	18.79	111.51	4,589.71	-484.88	1,230.10	1,267,990.346	3,236,858.141	40.065921	-104.653711
4,900.00	18.79	111.51	4,684.38	-496.69	1,260.06	1,267,978.817	3,236,888.222	40.065888	-104.653604

Database:	EDM 5000.15 Single User Db	Local Co-ordinate Reference:	Well WARNER 2J-10H-E165
Company:	Crestone Peak Resources	TVD Reference:	WELL @ 4994.00usft (Original Well Elev)
Project:	Sec 10 T1N-R65W	MD Reference:	WELL @ 4994.00usft (Original Well Elev)
Site:	Warner Pad	North Reference:	True
Well:	WARNER 2J-10H-E165	Survey Calculation Method:	Minimum Curvature
Wellbore:	Wellbore #1		
Design:	Plan #3 27Sep18 kjs		

Planned Survey									
Measured Depth (usft)	Inclination (°)	Azimuth (°)	Vertical Depth (usft)	+N/-S (usft)	+E/-W (usft)	Map Northing (usft)	Map Easting (usft)	Latitude	Longitude
5,000.00	18.79	111.51	4,779.05	-508.50	1,290.03	1,267,967.289	3,236,918.303	40.065856	-104.653497
5,100.00	18.79	111.51	4,873.72	-520.32	1,320.00	1,267,955.760	3,236,948.383	40.065823	-104.653390
5,200.00	18.79	111.51	4,968.39	-532.13	1,349.97	1,267,944.232	3,236,978.464	40.065791	-104.653283
5,300.00	18.79	111.51	5,063.06	-543.94	1,379.94	1,267,932.704	3,237,008.544	40.065759	-104.653176
5,400.00	18.79	111.51	5,157.73	-555.76	1,409.91	1,267,921.175	3,237,038.625	40.065726	-104.653069
5,500.00	18.79	111.51	5,252.40	-567.57	1,439.88	1,267,909.647	3,237,068.706	40.065694	-104.652962
5,600.00	18.79	111.51	5,347.07	-579.38	1,469.85	1,267,898.119	3,237,098.786	40.065661	-104.652855
5,700.00	18.79	111.51	5,441.74	-591.20	1,499.82	1,267,886.590	3,237,128.867	40.065629	-104.652748
5,800.00	18.79	111.51	5,536.41	-603.01	1,529.79	1,267,875.062	3,237,158.947	40.065596	-104.652640
5,900.00	18.79	111.51	5,631.08	-614.82	1,559.76	1,267,863.534	3,237,189.028	40.065564	-104.652533
6,000.00	18.79	111.51	5,725.74	-626.64	1,589.73	1,267,852.005	3,237,219.109	40.065532	-104.652426
6,100.00	18.79	111.51	5,820.41	-638.45	1,619.70	1,267,840.477	3,237,249.189	40.065499	-104.652319
6,200.00	18.79	111.51	5,915.08	-650.26	1,649.67	1,267,828.949	3,237,279.270	40.065467	-104.652212
6,300.00	18.79	111.51	6,009.75	-662.08	1,679.64	1,267,817.420	3,237,309.351	40.065434	-104.652105
6,400.00	18.79	111.51	6,104.42	-673.89	1,709.61	1,267,805.892	3,237,339.431	40.065402	-104.651998
6,500.00	18.79	111.51	6,199.09	-685.70	1,739.58	1,267,794.364	3,237,369.512	40.065369	-104.651891
6,600.00	18.79	111.51	6,293.76	-697.52	1,769.55	1,267,782.835	3,237,399.592	40.065337	-104.651784
6,626.54	18.79	111.51	6,318.89	-700.65	1,777.51	1,267,779.775	3,237,407.577	40.065328	-104.651755
KOP 8/100									
6,700.00	17.65	93.00	6,388.72	-705.58	1,799.65	1,267,775.060	3,237,429.768	40.065315	-104.651676
6,800.00	19.03	67.75	6,483.79	-700.19	1,829.92	1,267,780.736	3,237,459.987	40.065330	-104.651568
6,900.00	23.16	48.56	6,577.18	-680.97	1,859.80	1,267,800.241	3,237,489.680	40.065382	-104.651461
7,000.00	28.89	35.74	6,667.07	-648.29	1,888.70	1,267,833.194	3,237,518.270	40.065472	-104.651358
7,100.00	35.45	27.09	6,751.71	-602.78	1,916.07	1,267,878.954	3,237,545.201	40.065597	-104.651260
7,200.00	42.45	20.91	6,829.46	-545.35	1,941.36	1,267,936.631	3,237,569.947	40.065755	-104.651170
7,300.00	49.71	16.21	6,898.80	-477.09	1,964.09	1,268,005.102	3,237,592.027	40.065942	-104.651089
7,400.00	57.11	12.44	6,958.38	-399.34	1,983.81	1,268,083.034	3,237,611.013	40.066155	-104.651018
7,500.00	64.62	9.25	7,007.05	-313.61	2,000.15	1,268,168.911	3,237,626.533	40.066391	-104.650960
7,600.00	72.18	6.44	7,043.84	-221.58	2,012.77	1,268,261.061	3,237,638.286	40.066643	-104.650915
7,700.00	79.78	3.87	7,068.06	-125.03	2,021.45	1,268,357.690	3,237,646.043	40.066908	-104.650884
7,800.00	87.40	1.41	7,079.22	-25.84	2,026.00	1,268,456.917	3,237,649.653	40.067181	-104.650867
7,834.16	90.00	0.58	7,080.00	8.30	2,026.59	1,268,491.061	3,237,649.922	40.067274	-104.650865
LP 90 Inc, 0.58 Az - WARNER 2J-10H-E165 TPZ									
7,900.00	90.00	0.58	7,080.00	74.14	2,027.26	1,268,556.904	3,237,649.963	40.067455	-104.650863
8,000.00	90.00	0.58	7,080.00	174.13	2,028.27	1,268,656.904	3,237,650.026	40.067730	-104.650859
8,100.00	90.00	0.58	7,080.00	274.13	2,029.28	1,268,756.904	3,237,650.089	40.068004	-104.650856
8,200.00	90.00	0.58	7,080.00	374.12	2,030.30	1,268,856.904	3,237,650.152	40.068279	-104.650852
8,300.00	90.00	0.58	7,080.00	474.12	2,031.31	1,268,956.904	3,237,650.214	40.068553	-104.650848
8,400.00	90.00	0.58	7,080.00	574.11	2,032.32	1,269,056.904	3,237,650.277	40.068828	-104.650845
8,500.00	90.00	0.58	7,080.00	674.11	2,033.33	1,269,156.904	3,237,650.340	40.069102	-104.650841
8,600.00	90.00	0.58	7,080.00	774.10	2,034.35	1,269,256.904	3,237,650.403	40.069377	-104.650837
8,700.00	90.00	0.58	7,080.00	874.10	2,035.36	1,269,356.904	3,237,650.466	40.069651	-104.650834
8,800.00	90.00	0.58	7,080.00	974.09	2,036.37	1,269,456.904	3,237,650.529	40.069926	-104.650830
8,900.00	90.00	0.58	7,080.00	1,074.09	2,037.38	1,269,556.904	3,237,650.592	40.070200	-104.650826
9,000.00	90.00	0.58	7,080.00	1,174.08	2,038.40	1,269,656.904	3,237,650.655	40.070475	-104.650823
9,100.00	90.00	0.58	7,080.00	1,274.08	2,039.41	1,269,756.904	3,237,650.717	40.070749	-104.650819
9,200.00	90.00	0.58	7,080.00	1,374.07	2,040.42	1,269,856.904	3,237,650.780	40.071024	-104.650815
9,300.00	90.00	0.58	7,080.00	1,474.07	2,041.43	1,269,956.904	3,237,650.843	40.071298	-104.650812
9,400.00	90.00	0.58	7,080.00	1,574.06	2,042.44	1,270,056.904	3,237,650.906	40.071573	-104.650808
9,500.00	90.00	0.58	7,080.00	1,674.06	2,043.46	1,270,156.904	3,237,650.969	40.071847	-104.650805
9,600.00	90.00	0.58	7,080.00	1,774.05	2,044.47	1,270,256.904	3,237,651.032	40.072122	-104.650801
9,700.00	90.00	0.58	7,080.00	1,874.05	2,045.48	1,270,356.904	3,237,651.095	40.072396	-104.650797
9,800.00	90.00	0.58	7,080.00	1,974.04	2,046.49	1,270,456.903	3,237,651.158	40.072671	-104.650794
9,900.00	90.00	0.58	7,080.00	2,074.04	2,047.51	1,270,556.903	3,237,651.220	40.072945	-104.650790

Database:	EDM 5000.15 Single User Db	Local Co-ordinate Reference:	Well WARNER 2J-10H-E165
Company:	Crestone Peak Resources	TVD Reference:	WELL @ 4994.00usft (Original Well Elev)
Project:	Sec 10 T1N-R65W	MD Reference:	WELL @ 4994.00usft (Original Well Elev)
Site:	Warner Pad	North Reference:	True
Well:	WARNER 2J-10H-E165	Survey Calculation Method:	Minimum Curvature
Wellbore:	Wellbore #1		
Design:	Plan #3 27Sep18 kjs		

Planned Survey									
Measured Depth (usft)	Inclination (°)	Azimuth (°)	Vertical Depth (usft)	+N/-S (usft)	+E/-W (usft)	Map Northing (usft)	Map Easting (usft)	Latitude	Longitude
10,000.00	90.00	0.58	7,080.00	2,174.03	2,048.52	1,270,656.903	3,237,651.283	40.073220	-104.650786
10,100.00	90.00	0.58	7,080.00	2,274.03	2,049.53	1,270,756.903	3,237,651.346	40.073494	-104.650783
10,200.00	90.00	0.58	7,080.00	2,374.02	2,050.54	1,270,856.903	3,237,651.409	40.073769	-104.650779
10,300.00	90.00	0.58	7,080.00	2,474.02	2,051.55	1,270,956.903	3,237,651.472	40.074043	-104.650775
10,400.00	90.00	0.58	7,080.00	2,574.01	2,052.57	1,271,056.903	3,237,651.535	40.074318	-104.650772
10,500.00	90.00	0.58	7,080.00	2,674.01	2,053.58	1,271,156.903	3,237,651.598	40.074592	-104.650768
10,600.00	90.00	0.58	7,080.00	2,774.00	2,054.59	1,271,256.903	3,237,651.661	40.074867	-104.650764
10,700.00	90.00	0.58	7,080.00	2,874.00	2,055.60	1,271,356.903	3,237,651.723	40.075141	-104.650761
10,800.00	90.00	0.58	7,080.00	2,973.99	2,056.62	1,271,456.903	3,237,651.786	40.075416	-104.650757
10,900.00	90.00	0.58	7,080.00	3,073.99	2,057.63	1,271,556.903	3,237,651.849	40.075690	-104.650753
11,000.00	90.00	0.58	7,080.00	3,173.98	2,058.64	1,271,656.903	3,237,651.912	40.075965	-104.650750
11,100.00	90.00	0.58	7,080.00	3,273.98	2,059.65	1,271,756.903	3,237,651.975	40.076239	-104.650746
11,200.00	90.00	0.58	7,080.00	3,373.97	2,060.67	1,271,856.903	3,237,652.038	40.076514	-104.650743
11,300.00	90.00	0.58	7,080.00	3,473.97	2,061.68	1,271,956.903	3,237,652.101	40.076788	-104.650739
11,400.00	90.00	0.58	7,080.00	3,573.96	2,062.69	1,272,056.903	3,237,652.164	40.077063	-104.650735
11,500.00	90.00	0.58	7,080.00	3,673.96	2,063.70	1,272,156.903	3,237,652.226	40.077337	-104.650732
11,600.00	90.00	0.58	7,080.00	3,773.95	2,064.71	1,272,256.903	3,237,652.289	40.077612	-104.650728
11,700.00	90.00	0.58	7,080.00	3,873.95	2,065.73	1,272,356.903	3,237,652.352	40.077886	-104.650724
11,800.00	90.00	0.58	7,080.00	3,973.94	2,066.74	1,272,456.903	3,237,652.415	40.078161	-104.650721
11,900.00	90.00	0.58	7,080.00	4,073.94	2,067.75	1,272,556.903	3,237,652.478	40.078435	-104.650717
12,000.00	90.00	0.58	7,080.00	4,173.93	2,068.76	1,272,656.903	3,237,652.541	40.078710	-104.650713
12,100.00	90.00	0.58	7,080.00	4,273.92	2,069.78	1,272,756.903	3,237,652.604	40.078984	-104.650710
12,200.00	90.00	0.58	7,080.00	4,373.92	2,070.79	1,272,856.903	3,237,652.667	40.079259	-104.650706
12,300.00	90.00	0.58	7,080.00	4,473.91	2,071.80	1,272,956.903	3,237,652.729	40.079533	-104.650702
12,400.00	90.00	0.58	7,080.00	4,573.91	2,072.81	1,273,056.903	3,237,652.792	40.079808	-104.650699
12,500.00	90.00	0.58	7,080.00	4,673.90	2,073.82	1,273,156.903	3,237,652.855	40.080082	-104.650695
12,600.00	90.00	0.58	7,080.00	4,773.90	2,074.84	1,273,256.903	3,237,652.918	40.080357	-104.650691
12,700.00	90.00	0.58	7,080.00	4,873.89	2,075.85	1,273,356.903	3,237,652.981	40.080631	-104.650688
12,800.00	90.00	0.58	7,080.00	4,973.89	2,076.86	1,273,456.903	3,237,653.044	40.080906	-104.650684
12,900.00	90.00	0.58	7,080.00	5,073.88	2,077.87	1,273,556.903	3,237,653.107	40.081180	-104.650681
13,000.00	90.00	0.58	7,080.00	5,173.88	2,078.89	1,273,656.903	3,237,653.170	40.081455	-104.650677
13,100.00	90.00	0.58	7,080.00	5,273.87	2,079.90	1,273,756.904	3,237,653.232	40.081729	-104.650673
13,200.00	90.00	0.58	7,080.00	5,373.87	2,080.91	1,273,856.904	3,237,653.295	40.082004	-104.650670
13,300.00	90.00	0.58	7,080.00	5,473.86	2,081.92	1,273,956.904	3,237,653.358	40.082278	-104.650666
13,400.00	90.00	0.58	7,080.00	5,573.86	2,082.94	1,274,056.904	3,237,653.421	40.082553	-104.650662
13,500.00	90.00	0.58	7,080.00	5,673.85	2,083.95	1,274,156.904	3,237,653.484	40.082827	-104.650659
13,600.00	90.00	0.58	7,080.00	5,773.85	2,084.96	1,274,256.904	3,237,653.547	40.083102	-104.650655
13,700.00	90.00	0.58	7,080.00	5,873.84	2,085.97	1,274,356.904	3,237,653.610	40.083376	-104.650651
13,800.00	90.00	0.58	7,080.00	5,973.84	2,086.98	1,274,456.904	3,237,653.673	40.083651	-104.650648
13,900.00	90.00	0.58	7,080.00	6,073.83	2,088.00	1,274,556.903	3,237,653.735	40.083925	-104.650644
14,000.00	90.00	0.58	7,080.00	6,173.83	2,089.01	1,274,656.903	3,237,653.798	40.084200	-104.650640
14,100.00	90.00	0.58	7,080.00	6,273.82	2,090.02	1,274,756.903	3,237,653.861	40.084474	-104.650637
14,200.00	90.00	0.58	7,080.00	6,373.82	2,091.03	1,274,856.903	3,237,653.924	40.084749	-104.650633
14,300.00	90.00	0.58	7,080.00	6,473.81	2,092.05	1,274,956.903	3,237,653.987	40.085023	-104.650629
14,400.00	90.00	0.58	7,080.00	6,573.81	2,093.06	1,275,056.903	3,237,654.050	40.085298	-104.650626
14,500.00	90.00	0.58	7,080.00	6,673.80	2,094.07	1,275,156.903	3,237,654.113	40.085572	-104.650622
14,600.00	90.00	0.58	7,080.00	6,773.80	2,095.08	1,275,256.903	3,237,654.176	40.085847	-104.650619
14,700.00	90.00	0.58	7,080.00	6,873.79	2,096.09	1,275,356.903	3,237,654.238	40.086121	-104.650615
14,800.00	90.00	0.58	7,080.00	6,973.79	2,097.11	1,275,456.903	3,237,654.301	40.086396	-104.650611
14,823.77	90.00	0.58	7,080.00	6,997.56	2,097.37	1,275,480.678	3,237,654.338	40.086461	-104.650610
TD at 14823.77 - WARNER 2J-10H-E165 BHL									

Database:	EDM 5000.15 Single User Db	Local Co-ordinate Reference:	Well WARNER 2J-10H-E165
Company:	Crestone Peak Resources	TVD Reference:	WELL @ 4994.00usft (Original Well Elev)
Project:	Sec 10 T1N-R65W	MD Reference:	WELL @ 4994.00usft (Original Well Elev)
Site:	Warner Pad	North Reference:	True
Well:	WARNER 2J-10H-E165	Survey Calculation Method:	Minimum Curvature
Wellbore:	Wellbore #1		
Design:	Plan #3 27Sep18 kjs		

Design Targets									
Target Name									
- hit/miss target	Dip Angle	Dip Dir.	TVD	+N/-S	+E/-W	Northing	Easting	Latitude	Longitude
- Shape	(°)	(°)	(usft)	(usft)	(usft)	(usft)	(usft)		
WARNER 2J-10H-E165	0.00	0.00	7,080.00	8.30	2,026.59	1,268,491.061	3,237,649.922	40.067274	-104.650865
- plan hits target center									
- Point									
WARNER 2J-10H-E165	0.00	0.00	7,080.00	6,997.56	2,097.37	1,275,480.678	3,237,654.338	40.086461	-104.650610
- plan hits target center									
- Point									

Plan Annotations					
	Measured Depth	Vertical Depth	Local Coordinates		
	(usft)	(usft)	+N/-S (usft)	+E/-W (usft)	Comment
	230.00	230.00	0.00	0.00	Start Build 2.00
	1,169.62	1,152.87	-56.00	142.08	Hold 18.79 Inc, 111.51 Az
	6,626.54	6,318.89	-700.65	1,777.51	KOP 8/100
	7,834.16	7,080.00	8.30	2,026.59	LP 90 Inc, 0.58 Az
	14,823.77	7,080.00	6,997.56	2,097.37	TD at 14823.77