



# Crestone Peak Resources

Well Name:

WARNER 2I-10H-E165

Project Name:

Sec 10 T1N-R65W

Pad Name:

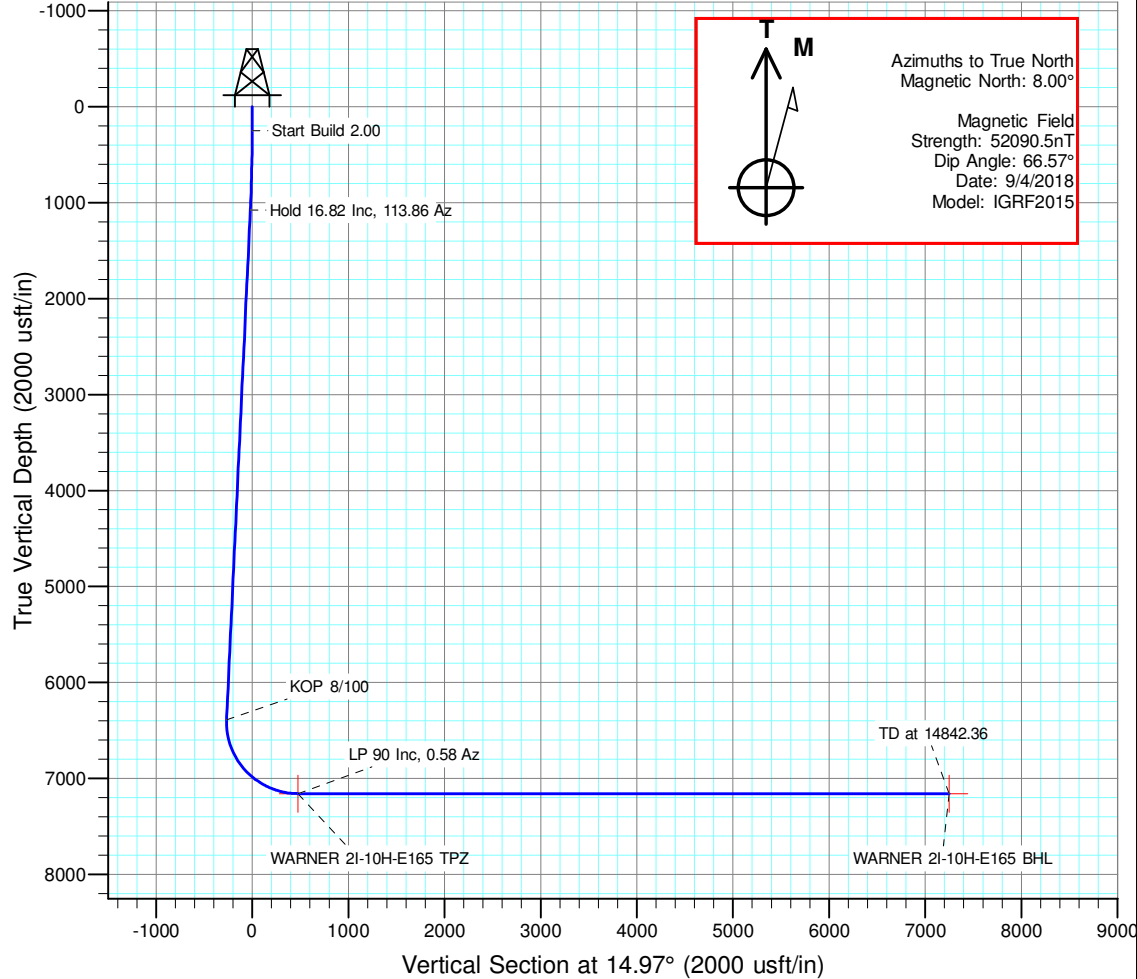
Warner Pad

## ANNOTATIONS

MD	Inc	Azi	TVD	+N/-S	+E/-W	VSec	Departure	Annotation
250.00	0.00	0.00	250.00	0.00	0.00	0.00	0.00	Start Build 2.00
1091.19	16.82	113.86	1079.16	-49.59	112.14	-18.95	122.62	Hold 16.82 Inc, 113.86 Az
6640.56	16.82	113.86	6391.00	-699.20	1581.06	-267.11	1728.77	KOP 8/100
7847.65	90.00	0.58	7160.00	10.10	1801.85	475.15	2525.60	LP 90 Inc, 0.58 Az
14842.36	90.00	0.58	7160.00	7004.45	1872.69	7250.47	9520.32	TD at 14842.36

## DESIGN TARGET DETAILS

Name	TVD	+N/-S	+E/-W	Northing	Easting	Latitude	Longitude	Shape
WARNER 2I-10H-E165 BHL	7160.00	7004.45	1872.69	1275485.351	3237419.531	40.086480	-104.651449	Point
WARNER 2I-10H-E165 TPZ	7160.00	10.10	1801.85	1268490.639	3237415.097	40.067279	-104.651704	Point

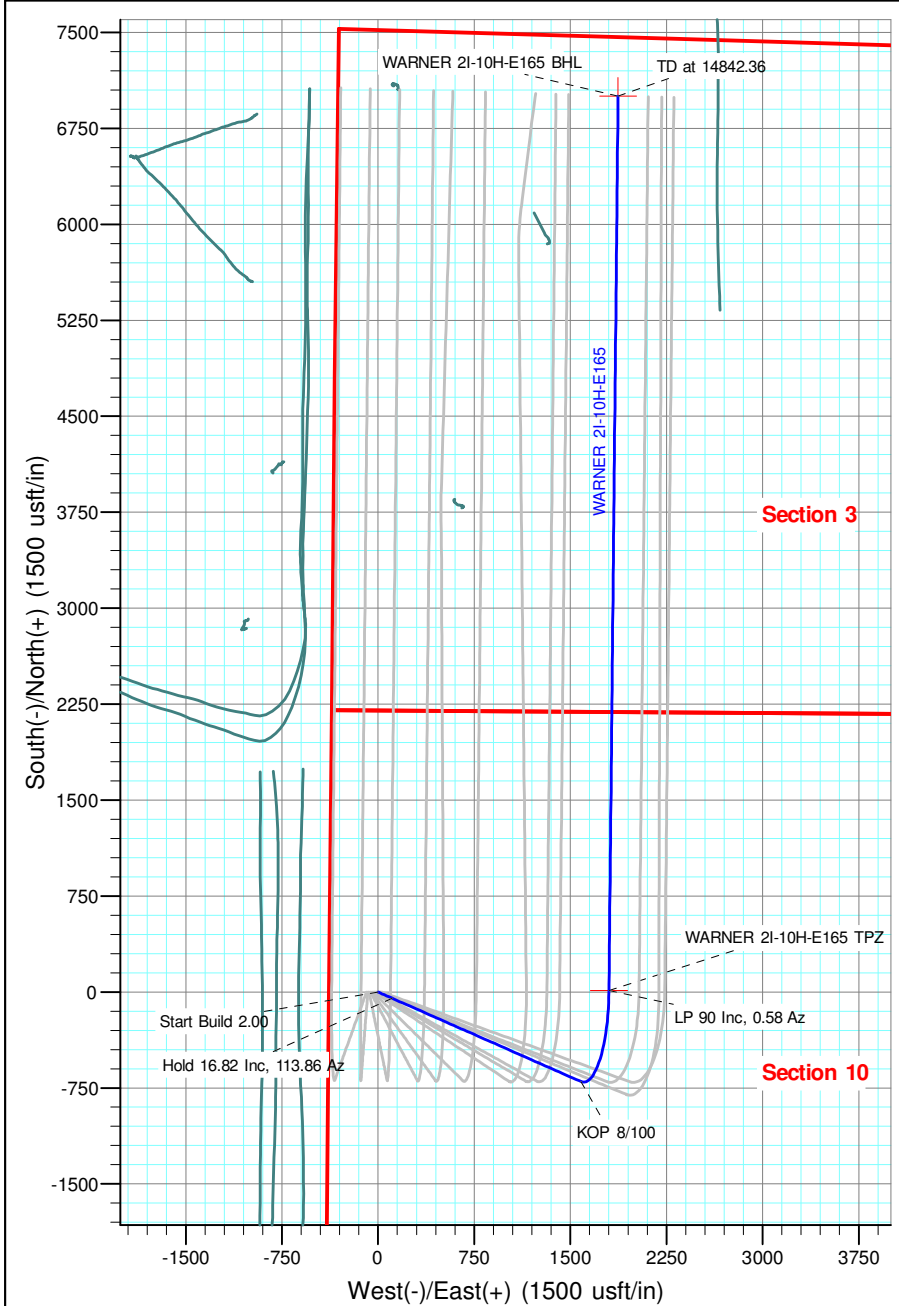


## Geodetic Datum:

North American Datum 1983  
US State Plane 1983, Colorado Northern Zone

## Elevation:

Ground Elevation: 4971.00  
KB Elevation: WELL @ 4994.00usft (Original Well Elev)





# **Crestone Peak Resources**

**Sec 10 T1N-R65W**

**Warner Pad**

**WARNER 2I-10H-E165**

**Wellbore #1**

**Plan: Plan #3 27Sep18 kjs**

## **Standard Planning Report - Geographic**

**28 September, 2018**

<b>Database:</b>	EDM 5000.15 Single User Db	<b>Local Co-ordinate Reference:</b>	Well WARNER 2I-10H-E165
<b>Company:</b>	Crestone Peak Resources	<b>TVD Reference:</b>	WELL @ 4994.00usft (Original Well Elev)
<b>Project:</b>	Sec 10 T1N-R65W	<b>MD Reference:</b>	WELL @ 4994.00usft (Original Well Elev)
<b>Site:</b>	Warner Pad	<b>North Reference:</b>	True
<b>Well:</b>	WARNER 2I-10H-E165	<b>Survey Calculation Method:</b>	Minimum Curvature
<b>Wellbore:</b>	Wellbore #1		
<b>Design:</b>	Plan #3 27Sep18 kjs		

<b>Project</b>	Sec 10 T1N-R65W, Wattenberg Field		
<b>Map System:</b>	US State Plane 1983	<b>System Datum:</b>	Mean Sea Level
<b>Geo Datum:</b>	North American Datum 1983		
<b>Map Zone:</b>	Colorado Northern Zone		

Site	Warner Pad				
Site Position:		Northing:	1,268,463.012 usft	Latitude:	40.067253
From:	Lat/Long	Easting:	3,235,523.582 usft	Longitude:	-104.658463
Position Uncertainty:	0.00 usft	Slot Radius:	13-3/16 "	Grid Convergence:	0.54 °

Well	WARNER 2I-10H-E165					
Well Position	+N/-S	0.00 usft	Northing:	1,268,463.433 usft	Latitude:	40.067252
	+E/-W	0.00 usft	Easting:	3,235,613.423 usft	Longitude:	-104.658142
Position Uncertainty		0.00 usft	Wellhead Elevation:		Ground Level:	4,971.00 usft

<b>Wellbore</b>	Wellbore #1				
<b>Magnetics</b>	<b>Model Name</b>	<b>Sample Date</b>	<b>Declination (°)</b>	<b>Dip Angle (°)</b>	<b>Field Strength (nT)</b>
	IGRF2015	9/4/2018	8.00	66.57	52,090.50597041

<b>Design</b>	Plan #3 27Sep18 kjs			
<b>Audit Notes:</b>				
<b>Version:</b>	<b>Phase:</b>	PLAN	<b>Tie On Depth:</b>	0.00
<b>Vertical Section:</b>	<b>Depth From (TVD) (usft)</b>	<b>+N/-S (usft)</b>	<b>+E/-W (usft)</b>	<b>Direction (°)</b>
	0.00	0.00	0.00	14.97

<b>Plan Survey Tool Program</b>	<b>Date</b>	9/28/2018		
<b>Depth From (usft)</b>	<b>Depth To (usft)</b>	<b>Survey (Wellbore)</b>	<b>Tool Name</b>	<b>Remarks</b>
1	0.00	14,842.36 Plan #3 27Sep18 kjs (Wellbore #	MWD	
			OWSG MWD - Standard	

<b>Plan Sections</b>										
<b>Measured Depth (usft)</b>	<b>Inclination (°)</b>	<b>Azimuth (°)</b>	<b>Vertical Depth (usft)</b>	<b>+N/-S (usft)</b>	<b>+E/-W (usft)</b>	<b>Dogleg Rate (°/100usft)</b>	<b>Build Rate (°/100usft)</b>	<b>Turn Rate (°/100usft)</b>	<b>TFO (°)</b>	<b>Target</b>
0.00	0.00	0.00	0.00	0.00	0.00	0.00	0.00	0.00	0.00	
250.00	0.00	0.00	250.00	0.00	0.00	0.00	0.00	0.00	0.00	
1,091.19	16.82	113.86	1,079.16	-49.59	112.14	2.00	2.00	0.00	113.86	
6,640.56	16.82	113.86	6,391.00	-699.20	1,581.06	0.00	0.00	0.00	0.00	
7,847.65	90.00	0.58	7,160.00	10.10	1,801.85	8.00	6.06	-9.38	-112.38	WARNER 2I-10H-E165
14,842.36	90.00	0.58	7,160.00	7,004.45	1,872.69	0.00	0.00	0.00	0.00	WARNER 2I-10H-E165

<b>Database:</b>	EDM 5000.15 Single User Db	<b>Local Co-ordinate Reference:</b>	Well WARNER 2I-10H-E165
<b>Company:</b>	Crestone Peak Resources	<b>TVD Reference:</b>	WELL @ 4994.00usft (Original Well Elev)
<b>Project:</b>	Sec 10 T1N-R65W	<b>MD Reference:</b>	WELL @ 4994.00usft (Original Well Elev)
<b>Site:</b>	Warner Pad	<b>North Reference:</b>	True
<b>Well:</b>	WARNER 2I-10H-E165	<b>Survey Calculation Method:</b>	Minimum Curvature
<b>Wellbore:</b>	Wellbore #1		
<b>Design:</b>	Plan #3 27Sep18 kjs		

Planned Survey									
Measured Depth (usft)	Inclination (°)	Azimuth (°)	Vertical Depth (usft)	+N/-S (usft)	+E/-W (usft)	Map Northing (usft)	Map Easting (usft)	Latitude	Longitude
0.00	0.00	0.00	0.00	0.00	0.00	1,268,463.433	3,235,613.423	40.067252	-104.658142
100.00	0.00	0.00	100.00	0.00	0.00	1,268,463.433	3,235,613.423	40.067252	-104.658142
200.00	0.00	0.00	200.00	0.00	0.00	1,268,463.433	3,235,613.423	40.067252	-104.658142
250.00	0.00	0.00	250.00	0.00	0.00	1,268,463.433	3,235,613.423	40.067252	-104.658142
<b>Start Build 2.00</b>									
300.00	1.00	113.86	300.00	-0.18	0.40	1,268,463.260	3,235,613.824	40.067251	-104.658141
400.00	3.00	113.86	399.93	-1.59	3.59	1,268,461.879	3,235,617.029	40.067248	-104.658129
500.00	5.00	113.86	499.68	-4.41	9.97	1,268,459.119	3,235,623.435	40.067240	-104.658107
600.00	7.00	113.86	599.13	-8.64	19.53	1,268,454.982	3,235,633.033	40.067228	-104.658072
700.00	9.00	113.86	698.15	-14.27	32.26	1,268,449.475	3,235,645.814	40.067213	-104.658027
800.00	11.00	113.86	796.63	-21.29	48.14	1,268,442.603	3,235,661.760	40.067193	-104.657970
900.00	13.00	113.86	894.44	-29.70	67.15	1,268,434.376	3,235,680.853	40.067170	-104.657902
1,000.00	15.00	113.86	991.46	-39.48	89.28	1,268,424.802	3,235,703.069	40.067144	-104.657823
1,091.19	16.82	113.86	1,079.16	-49.59	112.14	1,268,414.908	3,235,726.028	40.067116	-104.657742
<b>Hold 16.82 Inc, 113.86 Az</b>									
1,100.00	16.82	113.86	1,087.59	-50.62	114.47	1,268,413.899	3,235,728.369	40.067113	-104.657733
1,200.00	16.82	113.86	1,183.31	-62.33	140.94	1,268,402.445	3,235,754.949	40.067081	-104.657639
1,300.00	16.82	113.86	1,279.03	-74.03	167.41	1,268,390.991	3,235,781.529	40.067049	-104.657544
1,400.00	16.82	113.86	1,374.75	-85.74	193.88	1,268,379.537	3,235,808.109	40.067017	-104.657450
1,500.00	16.82	113.86	1,470.47	-97.45	220.35	1,268,368.083	3,235,834.689	40.066984	-104.657355
1,600.00	16.82	113.86	1,566.19	-109.15	246.82	1,268,356.629	3,235,861.270	40.066952	-104.657260
1,700.00	16.82	113.86	1,661.91	-120.86	273.29	1,268,345.175	3,235,887.850	40.066920	-104.657166
1,800.00	16.82	113.86	1,757.63	-132.56	299.76	1,268,333.720	3,235,914.430	40.066888	-104.657071
1,900.00	16.82	113.86	1,853.35	-144.27	326.23	1,268,322.266	3,235,941.010	40.066856	-104.656977
2,000.00	16.82	113.86	1,949.07	-155.98	352.70	1,268,310.812	3,235,967.590	40.066824	-104.656882
2,100.00	16.82	113.86	2,044.79	-167.68	379.17	1,268,299.358	3,235,994.170	40.066792	-104.656787
2,200.00	16.82	113.86	2,140.51	-179.39	405.64	1,268,287.904	3,236,020.750	40.066759	-104.656693
2,300.00	16.82	113.86	2,236.23	-191.09	432.11	1,268,276.450	3,236,047.330	40.066727	-104.656598
2,400.00	16.82	113.86	2,331.95	-202.80	458.58	1,268,264.996	3,236,073.910	40.066695	-104.656504
2,500.00	16.82	113.86	2,427.67	-214.51	485.05	1,268,253.541	3,236,100.490	40.066663	-104.656409
2,600.00	16.82	113.86	2,523.39	-226.21	511.52	1,268,242.087	3,236,127.070	40.066631	-104.656315
2,700.00	16.82	113.86	2,619.11	-237.92	537.99	1,268,230.633	3,236,153.650	40.066599	-104.656220
2,800.00	16.82	113.86	2,714.83	-249.62	564.46	1,268,219.179	3,236,180.230	40.066567	-104.656125
2,900.00	16.82	113.86	2,810.55	-261.33	590.93	1,268,207.725	3,236,206.810	40.066534	-104.656031
3,000.00	16.82	113.86	2,906.27	-273.04	617.40	1,268,196.271	3,236,233.390	40.066502	-104.655936
3,100.00	16.82	113.86	3,001.99	-284.74	643.87	1,268,184.817	3,236,259.971	40.066470	-104.655842
3,200.00	16.82	113.86	3,097.71	-296.45	670.34	1,268,173.362	3,236,286.551	40.066438	-104.655747
3,300.00	16.82	113.86	3,193.43	-308.15	696.81	1,268,161.908	3,236,313.131	40.066406	-104.655653
3,400.00	16.82	113.86	3,289.15	-319.86	723.28	1,268,150.454	3,236,339.711	40.066374	-104.655558
3,500.00	16.82	113.86	3,384.87	-331.57	749.75	1,268,139.000	3,236,366.291	40.066342	-104.655463
3,600.00	16.82	113.86	3,480.59	-343.27	776.22	1,268,127.546	3,236,392.871	40.066310	-104.655369
3,700.00	16.82	113.86	3,576.31	-354.98	802.69	1,268,116.092	3,236,419.451	40.066277	-104.655274
3,800.00	16.82	113.86	3,672.03	-366.68	829.16	1,268,104.637	3,236,446.031	40.066245	-104.655180
3,900.00	16.82	113.86	3,767.74	-378.39	855.63	1,268,093.183	3,236,472.611	40.066213	-104.655085
4,000.00	16.82	113.86	3,863.46	-390.10	882.10	1,268,081.729	3,236,499.191	40.066181	-104.654991
4,100.00	16.82	113.86	3,959.18	-401.80	908.57	1,268,070.275	3,236,525.771	40.066149	-104.654896
4,200.00	16.82	113.86	4,054.90	-413.51	935.04	1,268,058.821	3,236,552.351	40.066117	-104.654801
4,300.00	16.82	113.86	4,150.62	-425.21	961.51	1,268,047.367	3,236,578.931	40.066085	-104.654707
4,400.00	16.82	113.86	4,246.34	-436.92	987.98	1,268,035.913	3,236,605.511	40.066052	-104.654612
4,500.00	16.82	113.86	4,342.06	-448.63	1,014.45	1,268,024.458	3,236,632.091	40.066020	-104.654518
4,600.00	16.82	113.86	4,437.78	-460.33	1,040.93	1,268,013.004	3,236,658.671	40.065988	-104.654423
4,700.00	16.82	113.86	4,533.50	-472.04	1,067.40	1,268,001.550	3,236,685.252	40.065956	-104.654329
4,800.00	16.82	113.86	4,629.22	-483.74	1,093.87	1,267,990.096	3,236,711.832	40.065924	-104.654234
4,900.00	16.82	113.86	4,724.94	-495.45	1,120.34	1,267,978.642	3,236,738.412	40.065892	-104.654139

<b>Database:</b>	EDM 5000.15 Single User Db	<b>Local Co-ordinate Reference:</b>	Well WARNER 2I-10H-E165
<b>Company:</b>	Crestone Peak Resources	<b>TVD Reference:</b>	WELL @ 4994.00usft (Original Well Elev)
<b>Project:</b>	Sec 10 T1N-R65W	<b>MD Reference:</b>	WELL @ 4994.00usft (Original Well Elev)
<b>Site:</b>	Warner Pad	<b>North Reference:</b>	True
<b>Well:</b>	WARNER 2I-10H-E165	<b>Survey Calculation Method:</b>	Minimum Curvature
<b>Wellbore:</b>	Wellbore #1		
<b>Design:</b>	Plan #3 27Sep18 kjs		

Planned Survey									
Measured Depth (usft)	Inclination (°)	Azimuth (°)	Vertical Depth (usft)	+N/-S (usft)	+E/-W (usft)	Map Northing (usft)	Map Easting (usft)	Latitude	Longitude
5,000.00	16.82	113.86	4,820.66	-507.16	1,146.81	1,267,967.188	3,236,764.992	40.065860	-104.654045
5,100.00	16.82	113.86	4,916.38	-518.86	1,173.28	1,267,955.734	3,236,791.572	40.065827	-104.653950
5,200.00	16.82	113.86	5,012.10	-530.57	1,199.75	1,267,944.279	3,236,818.152	40.065795	-104.653856
5,300.00	16.82	113.86	5,107.82	-542.27	1,226.22	1,267,932.825	3,236,844.732	40.065763	-104.653761
5,400.00	16.82	113.86	5,203.54	-553.98	1,252.69	1,267,921.371	3,236,871.312	40.065731	-104.653667
5,500.00	16.82	113.86	5,299.26	-565.69	1,279.16	1,267,909.917	3,236,897.892	40.065699	-104.653572
5,600.00	16.82	113.86	5,394.98	-577.39	1,305.63	1,267,898.463	3,236,924.472	40.065667	-104.653477
5,700.00	16.82	113.86	5,490.70	-589.10	1,332.10	1,267,887.009	3,236,951.052	40.065635	-104.653383
5,800.00	16.82	113.86	5,586.42	-600.80	1,358.57	1,267,875.555	3,236,977.632	40.065602	-104.653288
5,900.00	16.82	113.86	5,682.14	-612.51	1,385.04	1,267,864.100	3,237,004.212	40.065570	-104.653194
6,000.00	16.82	113.86	5,777.86	-624.22	1,411.51	1,267,852.646	3,237,030.792	40.065538	-104.653099
6,100.00	16.82	113.86	5,873.58	-635.92	1,437.98	1,267,841.192	3,237,057.372	40.065506	-104.653005
6,200.00	16.82	113.86	5,969.30	-647.63	1,464.45	1,267,829.738	3,237,083.952	40.065474	-104.652910
6,300.00	16.82	113.86	6,065.02	-659.33	1,490.92	1,267,818.284	3,237,110.533	40.065442	-104.652815
6,400.00	16.82	113.86	6,160.74	-671.04	1,517.39	1,267,806.830	3,237,137.113	40.065410	-104.652721
6,500.00	16.82	113.86	6,256.46	-682.75	1,543.86	1,267,795.376	3,237,163.693	40.065378	-104.652626
6,600.00	16.82	113.86	6,352.18	-694.45	1,570.33	1,267,783.921	3,237,190.273	40.065345	-104.652532
6,640.56	16.82	113.86	6,391.00	-699.20	1,581.06	1,267,779.276	3,237,201.052	40.065332	-104.652493
<b>KOP 8/100</b>									
6,700.00	15.63	97.32	6,448.11	-703.70	1,596.88	1,267,774.924	3,237,216.912	40.065320	-104.652437
6,800.00	16.68	68.53	6,544.31	-700.16	1,623.64	1,267,778.722	3,237,243.636	40.065330	-104.652341
6,900.00	20.91	47.21	6,639.07	-682.75	1,650.14	1,267,796.380	3,237,269.966	40.065377	-104.652247
7,000.00	26.85	33.85	6,730.53	-651.82	1,675.86	1,267,827.552	3,237,295.391	40.065462	-104.652155
7,100.00	33.61	25.28	6,816.92	-607.97	1,700.30	1,267,871.633	3,237,319.415	40.065583	-104.652067
7,200.00	40.77	19.37	6,896.56	-552.05	1,722.98	1,267,927.764	3,237,341.570	40.065736	-104.651986
7,300.00	48.16	14.98	6,967.90	-485.15	1,743.48	1,267,994.854	3,237,361.426	40.065920	-104.651913
7,400.00	55.68	11.51	7,029.54	-408.58	1,761.37	1,268,071.596	3,237,378.596	40.066130	-104.651849
7,500.00	63.29	8.62	7,080.29	-323.82	1,776.33	1,268,156.496	3,237,392.746	40.066363	-104.651796
7,600.00	70.94	6.09	7,119.16	-232.52	1,788.05	1,268,247.903	3,237,403.600	40.066613	-104.651754
7,700.00	78.62	3.78	7,145.39	-136.46	1,796.31	1,268,344.036	3,237,410.947	40.066877	-104.651724
7,800.00	86.33	1.60	7,158.47	-37.51	1,800.95	1,268,443.025	3,237,414.644	40.067149	-104.651708
7,847.65	90.00	0.58	7,160.00	10.10	1,801.85	1,268,490.639	3,237,415.098	40.067279	-104.651704
<b>LP 90 Inc, 0.58 Az - WARNER 2I-10H-E165 TPZ</b>									
7,900.00	90.00	0.58	7,160.00	62.45	1,802.38	1,268,542.990	3,237,415.131	40.067423	-104.651702
8,000.00	90.00	0.58	7,160.00	162.44	1,803.39	1,268,642.990	3,237,415.193	40.067698	-104.651699
8,100.00	90.00	0.58	7,160.00	262.44	1,804.41	1,268,742.990	3,237,415.256	40.067972	-104.651695
8,200.00	90.00	0.58	7,160.00	362.43	1,805.42	1,268,842.990	3,237,415.319	40.068247	-104.651691
8,300.00	90.00	0.58	7,160.00	462.43	1,806.43	1,268,942.990	3,237,415.382	40.068521	-104.651688
8,400.00	90.00	0.58	7,160.00	562.42	1,807.44	1,269,042.990	3,237,415.445	40.068796	-104.651684
8,500.00	90.00	0.58	7,160.00	662.42	1,808.46	1,269,142.990	3,237,415.508	40.069070	-104.651680
8,600.00	90.00	0.58	7,160.00	762.41	1,809.47	1,269,242.990	3,237,415.571	40.069345	-104.651677
8,700.00	90.00	0.58	7,160.00	862.41	1,810.48	1,269,342.990	3,237,415.634	40.069619	-104.651673
8,800.00	90.00	0.58	7,160.00	962.40	1,811.49	1,269,442.990	3,237,415.697	40.069894	-104.651670
8,900.00	90.00	0.58	7,160.00	1,062.40	1,812.50	1,269,542.990	3,237,415.760	40.070168	-104.651666
9,000.00	90.00	0.58	7,160.00	1,162.39	1,813.52	1,269,642.990	3,237,415.823	40.070443	-104.651662
9,100.00	90.00	0.58	7,160.00	1,262.39	1,814.53	1,269,742.990	3,237,415.885	40.070717	-104.651659
9,200.00	90.00	0.58	7,160.00	1,362.38	1,815.54	1,269,842.990	3,237,415.948	40.070992	-104.651655
9,300.00	90.00	0.58	7,160.00	1,462.38	1,816.55	1,269,942.989	3,237,416.011	40.071266	-104.651651
9,400.00	90.00	0.58	7,160.00	1,562.37	1,817.57	1,270,042.989	3,237,416.074	40.071541	-104.651648
9,500.00	90.00	0.58	7,160.00	1,662.37	1,818.58	1,270,142.989	3,237,416.137	40.071815	-104.651644
9,600.00	90.00	0.58	7,160.00	1,762.36	1,819.59	1,270,242.989	3,237,416.200	40.072090	-104.651640
9,700.00	90.00	0.58	7,160.00	1,862.36	1,820.60	1,270,342.989	3,237,416.263	40.072364	-104.651637
9,800.00	90.00	0.58	7,160.00	1,962.35	1,821.61	1,270,442.989	3,237,416.326	40.072639	-104.651633
9,900.00	90.00	0.58	7,160.00	2,062.35	1,822.63	1,270,542.989	3,237,416.389	40.072913	-104.651629

<b>Database:</b>	EDM 5000.15 Single User Db	<b>Local Co-ordinate Reference:</b>	Well WARNER 2I-10H-E165
<b>Company:</b>	Crestone Peak Resources	<b>TVD Reference:</b>	WELL @ 4994.00usft (Original Well Elev)
<b>Project:</b>	Sec 10 T1N-R65W	<b>MD Reference:</b>	WELL @ 4994.00usft (Original Well Elev)
<b>Site:</b>	Warner Pad	<b>North Reference:</b>	True
<b>Well:</b>	WARNER 2I-10H-E165	<b>Survey Calculation Method:</b>	Minimum Curvature
<b>Wellbore:</b>	Wellbore #1		
<b>Design:</b>	Plan #3 27Sep18 kjs		

Planned Survey									
Measured Depth (usft)	Inclination (°)	Azimuth (°)	Vertical Depth (usft)	+N/-S (usft)	+E/-W (usft)	Map Northing (usft)	Map Easting (usft)	Latitude	Longitude
10,000.00	90.00	0.58	7,160.00	2,162.34	1,823.64	1,270,642.989	3,237,416.452	40.073188	-104.651626
10,100.00	90.00	0.58	7,160.00	2,262.34	1,824.65	1,270,742.989	3,237,416.515	40.073462	-104.651622
10,200.00	90.00	0.58	7,160.00	2,362.33	1,825.66	1,270,842.989	3,237,416.578	40.073737	-104.651619
10,300.00	90.00	0.58	7,160.00	2,462.33	1,826.68	1,270,942.989	3,237,416.640	40.074011	-104.651615
10,400.00	90.00	0.58	7,160.00	2,562.32	1,827.69	1,271,042.989	3,237,416.703	40.074286	-104.651611
10,500.00	90.00	0.58	7,160.00	2,662.32	1,828.70	1,271,142.989	3,237,416.766	40.074560	-104.651608
10,600.00	90.00	0.58	7,160.00	2,762.31	1,829.71	1,271,242.989	3,237,416.829	40.074835	-104.651604
10,700.00	90.00	0.58	7,160.00	2,862.30	1,830.73	1,271,342.989	3,237,416.892	40.075109	-104.651600
10,800.00	90.00	0.58	7,160.00	2,962.30	1,831.74	1,271,442.989	3,237,416.955	40.075384	-104.651597
10,900.00	90.00	0.58	7,160.00	3,062.29	1,832.75	1,271,542.989	3,237,417.018	40.075658	-104.651593
11,000.00	90.00	0.58	7,160.00	3,162.29	1,833.76	1,271,642.989	3,237,417.081	40.075933	-104.651589
11,100.00	90.00	0.58	7,160.00	3,262.28	1,834.77	1,271,742.989	3,237,417.144	40.076207	-104.651586
11,200.00	90.00	0.58	7,160.00	3,362.28	1,835.79	1,271,842.989	3,237,417.207	40.076482	-104.651582
11,300.00	90.00	0.58	7,160.00	3,462.27	1,836.80	1,271,942.989	3,237,417.270	40.076756	-104.651578
11,400.00	90.00	0.58	7,160.00	3,562.27	1,837.81	1,272,042.989	3,237,417.333	40.077031	-104.651575
11,500.00	90.00	0.58	7,160.00	3,662.26	1,838.82	1,272,142.989	3,237,417.395	40.077305	-104.651571
11,600.00	90.00	0.58	7,160.00	3,762.26	1,839.84	1,272,242.989	3,237,417.458	40.077580	-104.651568
11,700.00	90.00	0.58	7,160.00	3,862.25	1,840.85	1,272,342.989	3,237,417.521	40.077854	-104.651564
11,800.00	90.00	0.58	7,160.00	3,962.25	1,841.86	1,272,442.989	3,237,417.584	40.078129	-104.651560
11,900.00	90.00	0.58	7,160.00	4,062.24	1,842.87	1,272,542.989	3,237,417.647	40.078403	-104.651557
12,000.00	90.00	0.58	7,160.00	4,162.24	1,843.88	1,272,642.989	3,237,417.710	40.078678	-104.651553
12,100.00	90.00	0.58	7,160.00	4,262.23	1,844.90	1,272,742.989	3,237,417.773	40.078952	-104.651549
12,200.00	90.00	0.58	7,160.00	4,362.23	1,845.91	1,272,842.989	3,237,417.836	40.079227	-104.651546
12,300.00	90.00	0.58	7,160.00	4,462.22	1,846.92	1,272,942.989	3,237,417.899	40.079501	-104.651542
12,400.00	90.00	0.58	7,160.00	4,562.22	1,847.93	1,273,042.989	3,237,417.962	40.079776	-104.651538
12,500.00	90.00	0.58	7,160.00	4,662.21	1,848.95	1,273,142.989	3,237,418.025	40.080050	-104.651535
12,600.00	90.00	0.58	7,160.00	4,762.21	1,849.96	1,273,242.989	3,237,418.088	40.080325	-104.651531
12,700.00	90.00	0.58	7,160.00	4,862.20	1,850.97	1,273,342.989	3,237,418.150	40.080599	-104.651527
12,800.00	90.00	0.58	7,160.00	4,962.20	1,851.98	1,273,442.989	3,237,418.213	40.080874	-104.651524
12,900.00	90.00	0.58	7,160.00	5,062.19	1,853.00	1,273,542.989	3,237,418.276	40.081148	-104.651520
13,000.00	90.00	0.58	7,160.00	5,162.19	1,854.01	1,273,642.989	3,237,418.339	40.081423	-104.651517
13,100.00	90.00	0.58	7,160.00	5,262.18	1,855.02	1,273,742.989	3,237,418.402	40.081697	-104.651513
13,200.00	90.00	0.58	7,160.00	5,362.18	1,856.03	1,273,842.990	3,237,418.465	40.081972	-104.651509
13,300.00	90.00	0.58	7,160.00	5,462.17	1,857.04	1,273,942.990	3,237,418.528	40.082246	-104.651506
13,400.00	90.00	0.58	7,160.00	5,562.17	1,858.06	1,274,042.989	3,237,418.591	40.082521	-104.651502
13,500.00	90.00	0.58	7,160.00	5,662.16	1,859.07	1,274,142.989	3,237,418.654	40.082795	-104.651498
13,600.00	90.00	0.58	7,160.00	5,762.16	1,860.08	1,274,242.989	3,237,418.717	40.083070	-104.651495
13,700.00	90.00	0.58	7,160.00	5,862.15	1,861.09	1,274,342.989	3,237,418.780	40.083344	-104.651491
13,800.00	90.00	0.58	7,160.00	5,962.15	1,862.11	1,274,442.989	3,237,418.842	40.083619	-104.651487
13,900.00	90.00	0.58	7,160.00	6,062.14	1,863.12	1,274,542.989	3,237,418.905	40.083893	-104.651484
14,000.00	90.00	0.58	7,160.00	6,162.14	1,864.13	1,274,642.989	3,237,418.968	40.084168	-104.651480
14,100.00	90.00	0.58	7,160.00	6,262.13	1,865.14	1,274,742.989	3,237,419.031	40.084442	-104.651476
14,200.00	90.00	0.58	7,160.00	6,362.13	1,866.15	1,274,842.989	3,237,419.094	40.084717	-104.651473
14,300.00	90.00	0.58	7,160.00	6,462.12	1,867.17	1,274,942.989	3,237,419.157	40.084991	-104.651469
14,400.00	90.00	0.58	7,160.00	6,562.12	1,868.18	1,275,042.989	3,237,419.220	40.085266	-104.651466
14,500.00	90.00	0.58	7,160.00	6,662.11	1,869.19	1,275,142.989	3,237,419.283	40.085540	-104.651462
14,600.00	90.00	0.58	7,160.00	6,762.11	1,870.20	1,275,242.989	3,237,419.346	40.085815	-104.651458
14,700.00	90.00	0.58	7,160.00	6,862.10	1,871.22	1,275,342.989	3,237,419.409	40.086089	-104.651455
14,800.00	90.00	0.58	7,160.00	6,962.09	1,872.23	1,275,442.989	3,237,419.472	40.086364	-104.651451
14,842.36	90.00	0.58	7,160.00	7,004.45	1,872.69	1,275,485.351	3,237,419.531	40.086480	-104.651449
TD at 14842.36 - WARNER 2I-10H-E165 BHL									

<b>Database:</b>	EDM 5000.15 Single User Db	<b>Local Co-ordinate Reference:</b>	Well WARNER 2I-10H-E165
<b>Company:</b>	Crestone Peak Resources	<b>TVD Reference:</b>	WELL @ 4994.00usft (Original Well Elev)
<b>Project:</b>	Sec 10 T1N-R65W	<b>MD Reference:</b>	WELL @ 4994.00usft (Original Well Elev)
<b>Site:</b>	Warner Pad	<b>North Reference:</b>	True
<b>Well:</b>	WARNER 2I-10H-E165	<b>Survey Calculation Method:</b>	Minimum Curvature
<b>Wellbore:</b>	Wellbore #1		
<b>Design:</b>	Plan #3 27Sep18 kjs		

Design Targets									
Target Name									
- hit/miss target	Dip Angle	Dip Dir.	TVD	+N/-S	+E/-W	Northing	Easting	Latitude	Longitude
- Shape	(°)	(°)	(usft)	(usft)	(usft)	(usft)	(usft)		
WARNER 2I-10H-E165 `	0.00	0.00	7,160.00	10.10	1,801.85	1,268,490.639	3,237,415.098	40.067279	-104.651704
- plan hits target center									
- Point									
WARNER 2I-10H-E165 I	0.00	0.00	7,160.00	7,004.45	1,872.69	1,275,485.351	3,237,419.531	40.086480	-104.651449
- plan hits target center									
- Point									

Plan Annotations				
Measured Depth	Vertical Depth	Local Coordinates		Comment
(usft)	(usft)	+N/-S (usft)	+E/-W (usft)	
250.00	250.00	0.00	0.00	Start Build 2.00
1,091.19	1,079.16	-49.59	112.14	Hold 16.82 Inc, 113.86 Az
6,640.56	6,391.00	-699.20	1,581.06	KOP 8/100
7,847.65	7,160.00	10.10	1,801.85	LP 90 Inc, 0.58 Az
14,842.36	7,160.00	7,004.45	1,872.69	TD at 14842.36