



Crestone Peak Resources

Well Name:

WARNER 2G-10H-E165

Project Name:

Sec 10 T1N-R65W

Pad Name:

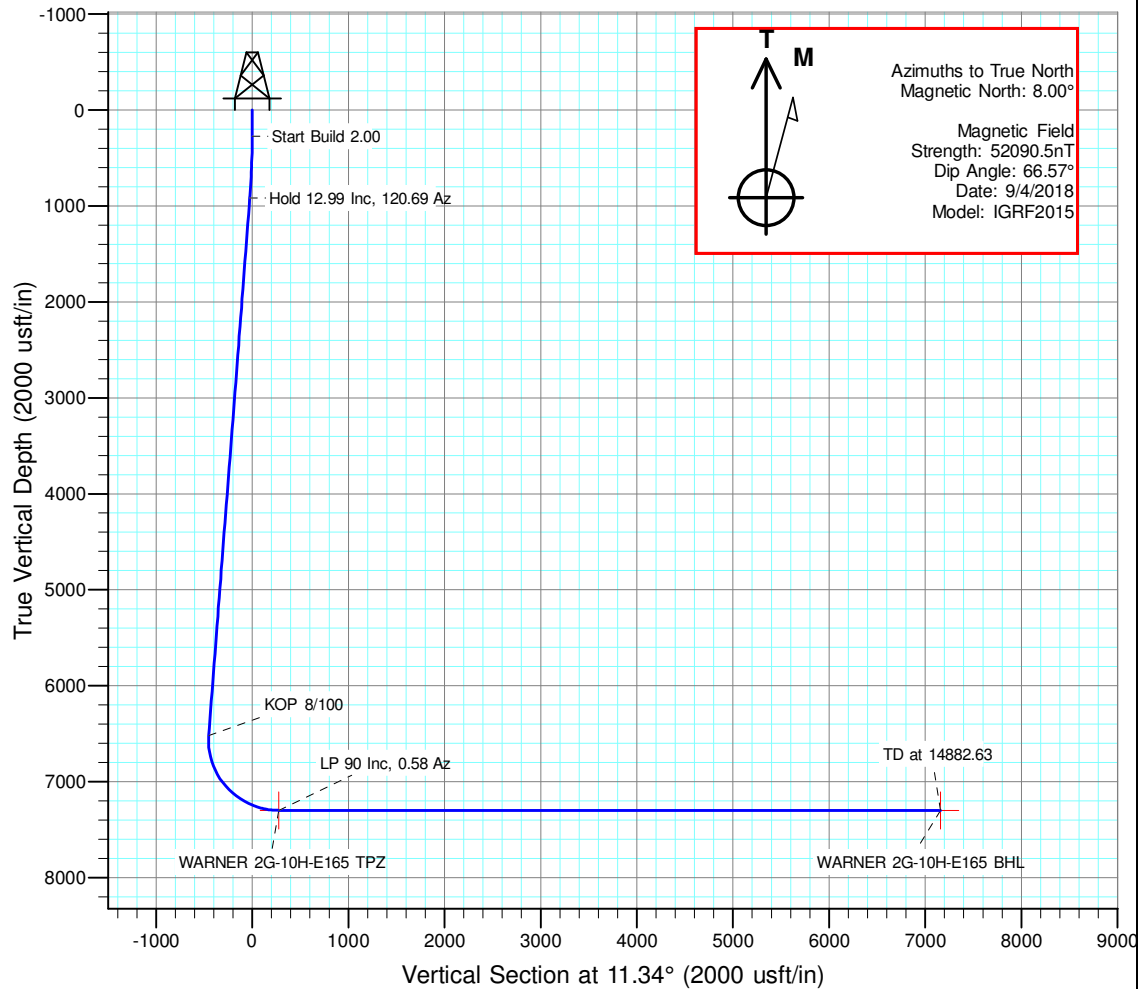
Warner Pad

ANNOTATIONS

MD	Inc	Azi	TVD	+N/-S	+E/-W	VSec	Departure	Annotation
275.00	0.00	0.00	275.00	0.00	0.00	0.00	0.00	Start Build 2.00
924.49	12.99	120.69	918.94	-37.42	63.04	-24.29	73.31	Hold 12.99 Inc, 120.69 Az
6671.05	12.99	120.69	6518.45	-696.68	1173.82	-452.25	1365.00	KOP 8/100
7876.99	90.00	0.58	7300.00	13.33	1336.97	275.98	2133.14	LP 90 Inc, 0.58 Az
14882.63	90.00	0.58	7300.00	7018.61	1407.66	7158.38	9138.78	TD at 14882.63

DESIGN TARGET DETAILS

Name	TVD	+N/-S	+E/-W	Northing	Easting	Latitude	Longitude	Shape
WARNER 2G-10H-E165 BHL	7300.00	7018.61	1407.66	1275494.922	3236934.527	40.086519	-104.653182	Point
WARNER 2G-10H-E165 TPZ	7300.00	13.33	1336.97	1268489.283	3236930.340	40.067288	-104.653436	Point

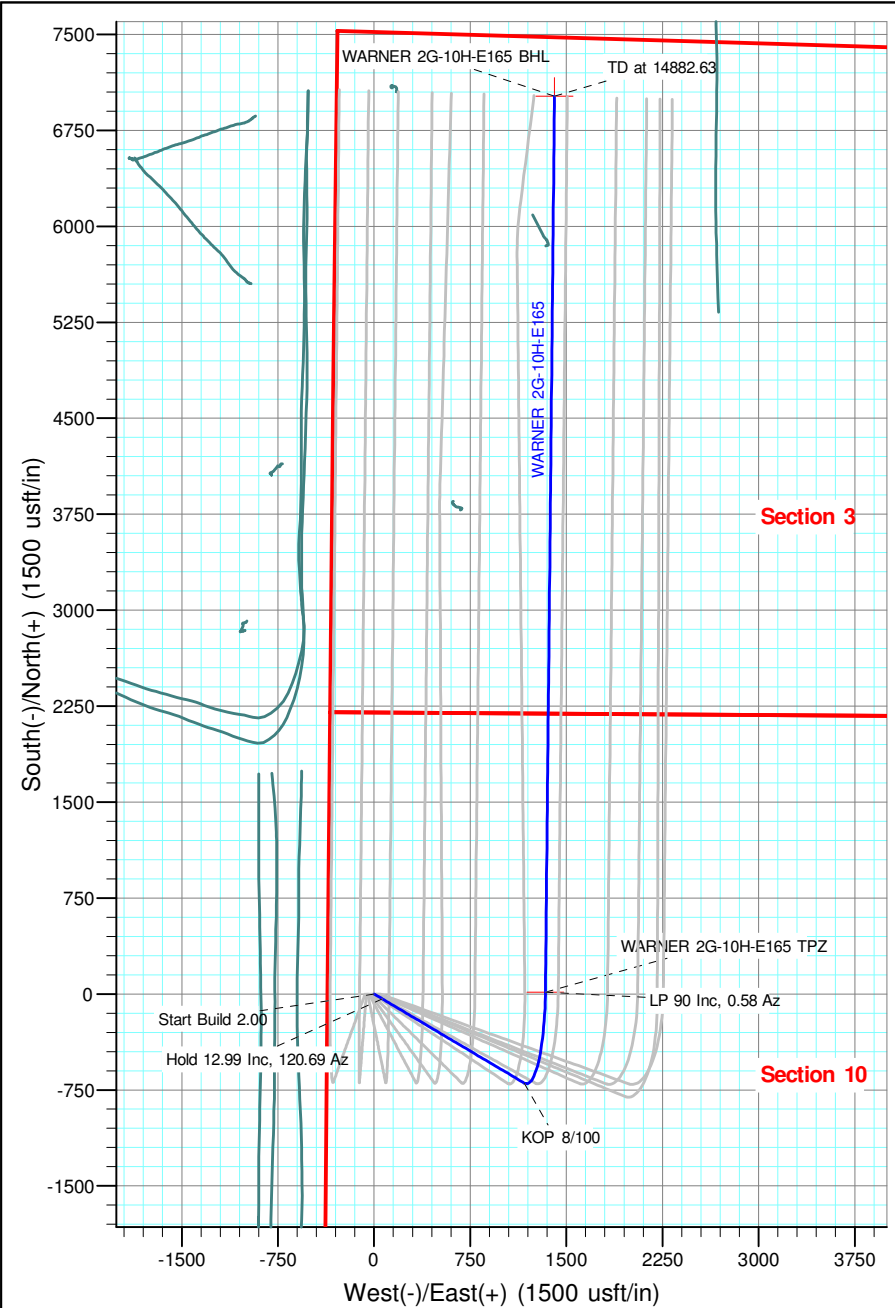


Geodetic Datum:

North American Datum 1983
US State Plane 1983, Colorado Northern Zone

Elevation:

Ground Elevation: 4971.00
KB Elevation: WELL @ 4994.00usft (Original Well Elev)





Crestone Peak Resources

Sec 10 T1N-R65W

Warner Pad

WARNER 2G-10H-E165

Wellbore #1

Plan: Plan #3 27Sep18 kjs

Standard Planning Report - Geographic

28 September, 2018

Database:	EDM 5000.15 Single User Db	Local Co-ordinate Reference:	Well WARNER 2G-10H-E165
Company:	Crestone Peak Resources	TVD Reference:	WELL @ 4994.00usft (Original Well Elev)
Project:	Sec 10 T1N-R65W	MD Reference:	WELL @ 4994.00usft (Original Well Elev)
Site:	Warner Pad	North Reference:	True
Well:	WARNER 2G-10H-E165	Survey Calculation Method:	Minimum Curvature
Wellbore:	Wellbore #1		
Design:	Plan #3 27Sep18 kjs		

Project	Sec 10 T1N-R65W, Wattenberg Field		
Map System:	US State Plane 1983	System Datum:	Mean Sea Level
Geo Datum:	North American Datum 1983		
Map Zone:	Colorado Northern Zone		

Site	Warner Pad				
Site Position:		Northing:	1,268,463.012 usft	Latitude:	40.067253
From:	Lat/Long	Easting:	3,235,523.582 usft	Longitude:	-104.658463
Position Uncertainty:	0.00 usft	Slot Radius:	13-3/16 "	Grid Convergence:	0.54 °

Well	WARNER 2G-10H-E165					
Well Position	+N/-S	0.00 usft	Northing:	1,268,463.261 usft	Latitude:	40.067252
	+E/-W	0.00 usft	Easting:	3,235,593.553 usft	Longitude:	-104.658213
Position Uncertainty		0.00 usft	Wellhead Elevation:		Ground Level:	4,971.00 usft

Wellbore	Wellbore #1				
Magnetics	Model Name	Sample Date	Declination (°)	Dip Angle (°)	Field Strength (nT)
	IGRF2015	9/4/2018	8.00	66.57	52,090.49856598

Design	Plan #3 27Sep18 kjs			
Audit Notes:				
Version:	Phase:	PLAN	Tie On Depth:	0.00
Vertical Section:	Depth From (TVD) (usft)	+N/-S (usft)	+E/-W (usft)	Direction (°)
	0.00	0.00	0.00	11.34

Plan Survey Tool Program	Date	9/28/2018		
Depth From (usft)	Depth To (usft)	Survey (Wellbore)	Tool Name	Remarks
1	0.00	14,882.63 Plan #3 27Sep18 kjs (Wellbore #	MWD	
			OWSG MWD - Standard	

Plan Sections										
Measured Depth (usft)	Inclination (°)	Azimuth (°)	Vertical Depth (usft)	+N/-S (usft)	+E/-W (usft)	Dogleg Rate (°/100usft)	Build Rate (°/100usft)	Turn Rate (°/100usft)	TFO (°)	Target
0.00	0.00	0.00	0.00	0.00	0.00	0.00	0.00	0.00	0.00	
275.00	0.00	0.00	275.00	0.00	0.00	0.00	0.00	0.00	0.00	
924.49	12.99	120.69	918.94	-37.42	63.04	2.00	2.00	0.00	120.69	
6,671.05	12.99	120.69	6,518.45	-696.68	1,173.82	0.00	0.00	0.00	0.00	
7,876.99	90.00	0.58	7,300.00	13.33	1,336.97	8.00	6.39	-9.96	-119.47	WARNER 2G-10H-E1
14,882.63	90.00	0.58	7,300.00	7,018.61	1,407.66	0.00	0.00	0.00	0.00	WARNER 2G-10H-E1

Database:	EDM 5000.15 Single User Db	Local Co-ordinate Reference:	Well WARNER 2G-10H-E165
Company:	Crestone Peak Resources	TVD Reference:	WELL @ 4994.00usft (Original Well Elev)
Project:	Sec 10 T1N-R65W	MD Reference:	WELL @ 4994.00usft (Original Well Elev)
Site:	Warner Pad	North Reference:	True
Well:	WARNER 2G-10H-E165	Survey Calculation Method:	Minimum Curvature
Wellbore:	Wellbore #1		
Design:	Plan #3 27Sep18 kjs		

Planned Survey									
Measured Depth (usft)	Inclination (°)	Azimuth (°)	Vertical Depth (usft)	+N/-S (usft)	+E/-W (usft)	Map Northing (usft)	Map Easting (usft)	Latitude	Longitude
0.00	0.00	0.00	0.00	0.00	0.00	1,268,463.261	3,235,593.553	40.067252	-104.658213
100.00	0.00	0.00	100.00	0.00	0.00	1,268,463.261	3,235,593.553	40.067252	-104.658213
200.00	0.00	0.00	200.00	0.00	0.00	1,268,463.261	3,235,593.553	40.067252	-104.658213
275.00	0.00	0.00	275.00	0.00	0.00	1,268,463.261	3,235,593.553	40.067252	-104.658213
Start Build 2.00									
300.00	0.50	120.69	300.00	-0.06	0.09	1,268,463.207	3,235,593.647	40.067252	-104.658213
400.00	2.50	120.69	399.96	-1.39	2.34	1,268,461.892	3,235,595.910	40.067248	-104.658205
500.00	4.50	120.69	499.77	-4.51	7.59	1,268,458.826	3,235,601.189	40.067240	-104.658186
600.00	6.50	120.69	599.30	-9.40	15.84	1,268,454.013	3,235,609.477	40.067226	-104.658157
700.00	8.50	120.69	698.44	-16.06	27.06	1,268,447.458	3,235,620.764	40.067208	-104.658117
800.00	10.50	120.69	797.07	-24.48	41.25	1,268,439.170	3,235,635.036	40.067185	-104.658066
900.00	12.50	120.69	895.05	-34.66	58.40	1,268,429.158	3,235,652.275	40.067157	-104.658005
924.49	12.99	120.69	918.94	-37.42	63.04	1,268,426.445	3,235,656.946	40.067149	-104.657988
Hold 12.99 Inc, 120.69 Az									
1,000.00	12.99	120.69	992.52	-46.08	77.64	1,268,417.921	3,235,671.624	40.067125	-104.657936
1,100.00	12.99	120.69	1,089.96	-57.55	96.97	1,268,406.633	3,235,691.062	40.067094	-104.657867
1,200.00	12.99	120.69	1,187.40	-69.02	116.30	1,268,395.344	3,235,710.499	40.067062	-104.657798
1,300.00	12.99	120.69	1,284.84	-80.50	135.63	1,268,384.056	3,235,729.937	40.067031	-104.657729
1,400.00	12.99	120.69	1,382.28	-91.97	154.96	1,268,372.767	3,235,749.374	40.066999	-104.657660
1,500.00	12.99	120.69	1,479.72	-103.44	174.28	1,268,361.479	3,235,768.811	40.066968	-104.657591
1,600.00	12.99	120.69	1,577.16	-114.91	193.61	1,268,350.191	3,235,788.249	40.066936	-104.657521
1,700.00	12.99	120.69	1,674.61	-126.39	212.94	1,268,338.902	3,235,807.686	40.066905	-104.657452
1,800.00	12.99	120.69	1,772.05	-137.86	232.27	1,268,327.614	3,235,827.124	40.066874	-104.657383
1,900.00	12.99	120.69	1,869.49	-149.33	251.60	1,268,316.326	3,235,846.561	40.066842	-104.657314
2,000.00	12.99	120.69	1,966.93	-160.80	270.93	1,268,305.037	3,235,865.999	40.066811	-104.657245
2,100.00	12.99	120.69	2,064.37	-172.28	290.26	1,268,293.749	3,235,885.436	40.066779	-104.657176
2,200.00	12.99	120.69	2,161.81	-183.75	309.59	1,268,282.461	3,235,904.874	40.066748	-104.657107
2,300.00	12.99	120.69	2,259.25	-195.22	328.92	1,268,271.172	3,235,924.311	40.066716	-104.657038
2,400.00	12.99	120.69	2,356.69	-206.69	348.25	1,268,259.884	3,235,943.749	40.066685	-104.656969
2,500.00	12.99	120.69	2,454.13	-218.17	367.58	1,268,248.595	3,235,963.186	40.066653	-104.656900
2,600.00	12.99	120.69	2,551.57	-229.64	386.91	1,268,237.307	3,235,982.624	40.066622	-104.656831
2,700.00	12.99	120.69	2,649.02	-241.11	406.24	1,268,226.019	3,236,002.061	40.066590	-104.656762
2,800.00	12.99	120.69	2,746.46	-252.58	425.57	1,268,214.730	3,236,021.498	40.066559	-104.656693
2,900.00	12.99	120.69	2,843.90	-264.05	444.90	1,268,203.442	3,236,040.936	40.066527	-104.656624
3,000.00	12.99	120.69	2,941.34	-275.53	464.23	1,268,192.154	3,236,060.373	40.066496	-104.656555
3,100.00	12.99	120.69	3,038.78	-287.00	483.56	1,268,180.865	3,236,079.811	40.066464	-104.656486
3,200.00	12.99	120.69	3,136.22	-298.47	502.89	1,268,169.577	3,236,099.248	40.066433	-104.656416
3,300.00	12.99	120.69	3,233.66	-309.94	522.21	1,268,158.289	3,236,118.686	40.066401	-104.656347
3,400.00	12.99	120.69	3,331.10	-321.42	541.54	1,268,147.000	3,236,138.123	40.066370	-104.656278
3,500.00	12.99	120.69	3,428.54	-332.89	560.87	1,268,135.712	3,236,157.561	40.066338	-104.656209
3,600.00	12.99	120.69	3,525.99	-344.36	580.20	1,268,124.423	3,236,176.998	40.066307	-104.656140
3,700.00	12.99	120.69	3,623.43	-355.83	599.53	1,268,113.135	3,236,196.436	40.066275	-104.656071
3,800.00	12.99	120.69	3,720.87	-367.31	618.86	1,268,101.847	3,236,215.873	40.066244	-104.656002
3,900.00	12.99	120.69	3,818.31	-378.78	638.19	1,268,090.558	3,236,235.310	40.066212	-104.655933
4,000.00	12.99	120.69	3,915.75	-390.25	657.52	1,268,079.270	3,236,254.748	40.066181	-104.655864
4,100.00	12.99	120.69	4,013.19	-401.72	676.85	1,268,067.982	3,236,274.185	40.066149	-104.655795
4,200.00	12.99	120.69	4,110.63	-413.20	696.18	1,268,056.693	3,236,293.623	40.066118	-104.655726
4,300.00	12.99	120.69	4,208.07	-424.67	715.51	1,268,045.405	3,236,313.060	40.066086	-104.655657
4,400.00	12.99	120.69	4,305.51	-436.14	734.84	1,268,034.116	3,236,332.498	40.066055	-104.655588
4,500.00	12.99	120.69	4,402.95	-447.61	754.17	1,268,022.828	3,236,351.935	40.066023	-104.655519
4,600.00	12.99	120.69	4,500.40	-459.08	773.50	1,268,011.540	3,236,371.373	40.065992	-104.655450
4,700.00	12.99	120.69	4,597.84	-470.56	792.83	1,268,000.251	3,236,390.810	40.065960	-104.655381
4,800.00	12.99	120.69	4,695.28	-482.03	812.16	1,267,988.963	3,236,410.248	40.065929	-104.655311
4,900.00	12.99	120.69	4,792.72	-493.50	831.49	1,267,977.675	3,236,429.685	40.065897	-104.655242

Database:	EDM 5000.15 Single User Db	Local Co-ordinate Reference:	Well WARNER 2G-10H-E165
Company:	Crestone Peak Resources	TVD Reference:	WELL @ 4994.00usft (Original Well Elev)
Project:	Sec 10 T1N-R65W	MD Reference:	WELL @ 4994.00usft (Original Well Elev)
Site:	Warner Pad	North Reference:	True
Well:	WARNER 2G-10H-E165	Survey Calculation Method:	Minimum Curvature
Wellbore:	Wellbore #1		
Design:	Plan #3 27Sep18 kjs		

Planned Survey									
Measured Depth (usft)	Inclination (°)	Azimuth (°)	Vertical Depth (usft)	+N/-S (usft)	+E/-W (usft)	Map Northing (usft)	Map Easting (usft)	Latitude	Longitude
5,000.00	12.99	120.69	4,890.16	-504.97	850.81	1,267,966.386	3,236,449.123	40.065866	-104.655173
5,100.00	12.99	120.69	4,987.60	-516.45	870.14	1,267,955.098	3,236,468.560	40.065834	-104.655104
5,200.00	12.99	120.69	5,085.04	-527.92	889.47	1,267,943.810	3,236,487.997	40.065803	-104.655035
5,300.00	12.99	120.69	5,182.48	-539.39	908.80	1,267,932.521	3,236,507.435	40.065771	-104.654966
5,400.00	12.99	120.69	5,279.92	-550.86	928.13	1,267,921.233	3,236,526.872	40.065740	-104.654897
5,500.00	12.99	120.69	5,377.37	-562.34	947.46	1,267,909.944	3,236,546.310	40.065708	-104.654828
5,600.00	12.99	120.69	5,474.81	-573.81	966.79	1,267,898.656	3,236,565.747	40.065677	-104.654759
5,700.00	12.99	120.69	5,572.25	-585.28	986.12	1,267,887.368	3,236,585.185	40.065645	-104.654690
5,800.00	12.99	120.69	5,669.69	-596.75	1,005.45	1,267,876.079	3,236,604.622	40.065614	-104.654621
5,900.00	12.99	120.69	5,767.13	-608.23	1,024.78	1,267,864.791	3,236,624.060	40.065582	-104.654552
6,000.00	12.99	120.69	5,864.57	-619.70	1,044.11	1,267,853.503	3,236,643.497	40.065551	-104.654483
6,100.00	12.99	120.69	5,962.01	-631.17	1,063.44	1,267,842.214	3,236,662.935	40.065519	-104.654414
6,200.00	12.99	120.69	6,059.45	-642.64	1,082.77	1,267,830.926	3,236,682.372	40.065488	-104.654345
6,300.00	12.99	120.69	6,156.89	-654.12	1,102.10	1,267,819.638	3,236,701.809	40.065456	-104.654276
6,400.00	12.99	120.69	6,254.33	-665.59	1,121.43	1,267,808.349	3,236,721.247	40.065425	-104.654207
6,500.00	12.99	120.69	6,351.78	-677.06	1,140.76	1,267,797.061	3,236,740.684	40.065393	-104.654137
6,600.00	12.99	120.69	6,449.22	-688.53	1,160.09	1,267,785.772	3,236,760.122	40.065362	-104.654068
6,671.05	12.99	120.69	6,518.45	-696.68	1,173.82	1,267,777.752	3,236,773.933	40.065339	-104.654019
KOP 8/100									
6,700.00	12.02	110.96	6,546.71	-699.42	1,179.43	1,267,775.066	3,236,779.571	40.065332	-104.653999
6,800.00	11.91	71.64	6,644.70	-699.90	1,198.98	1,267,774.777	3,236,799.124	40.065331	-104.653929
6,900.00	16.30	43.61	6,741.77	-686.46	1,218.49	1,267,788.396	3,236,818.503	40.065367	-104.653860
7,000.00	22.71	29.05	6,836.04	-659.38	1,237.58	1,267,815.659	3,236,837.332	40.065442	-104.653792
7,100.00	29.87	20.91	6,925.66	-619.18	1,255.87	1,267,856.035	3,236,855.242	40.065552	-104.653726
7,200.00	37.35	15.74	7,008.90	-566.63	1,273.01	1,267,908.739	3,236,871.886	40.065696	-104.653665
7,300.00	44.98	12.10	7,084.14	-502.77	1,288.67	1,267,972.743	3,236,886.940	40.065872	-104.653609
7,400.00	52.71	9.32	7,149.91	-428.84	1,302.55	1,268,046.804	3,236,900.111	40.066075	-104.653559
7,500.00	60.48	7.07	7,204.93	-346.28	1,314.36	1,268,129.478	3,236,911.142	40.066301	-104.653517
7,600.00	68.29	5.14	7,248.13	-256.68	1,323.89	1,268,219.157	3,236,919.819	40.066547	-104.653483
7,700.00	76.12	3.41	7,278.66	-161.81	1,330.94	1,268,314.096	3,236,925.972	40.066808	-104.653458
7,800.00	83.96	1.79	7,295.95	-63.50	1,335.39	1,268,412.446	3,236,929.483	40.067078	-104.653442
7,876.99	90.00	0.58	7,300.00	13.33	1,336.97	1,268,489.282	3,236,930.341	40.067288	-104.653436
LP 90 Inc, 0.58 Az - WARNER 2G-10H-E165 TPZ									
7,900.00	90.00	0.58	7,300.00	36.34	1,337.21	1,268,512.297	3,236,930.355	40.067352	-104.653435
8,000.00	90.00	0.58	7,300.00	136.34	1,338.22	1,268,612.297	3,236,930.418	40.067626	-104.653432
8,100.00	90.00	0.58	7,300.00	236.33	1,339.23	1,268,712.297	3,236,930.481	40.067901	-104.653428
8,200.00	90.00	0.58	7,300.00	336.33	1,340.24	1,268,812.297	3,236,930.544	40.068175	-104.653425
8,300.00	90.00	0.58	7,300.00	436.32	1,341.26	1,268,912.297	3,236,930.607	40.068450	-104.653421
8,400.00	90.00	0.58	7,300.00	536.32	1,342.27	1,269,012.297	3,236,930.670	40.068724	-104.653417
8,500.00	90.00	0.58	7,300.00	636.31	1,343.28	1,269,112.297	3,236,930.733	40.068999	-104.653414
8,600.00	90.00	0.58	7,300.00	736.31	1,344.29	1,269,212.297	3,236,930.796	40.069273	-104.653410
8,700.00	90.00	0.58	7,300.00	836.30	1,345.31	1,269,312.297	3,236,930.859	40.069548	-104.653406
8,800.00	90.00	0.58	7,300.00	936.30	1,346.32	1,269,412.297	3,236,930.922	40.069822	-104.653403
8,900.00	90.00	0.58	7,300.00	1,036.29	1,347.33	1,269,512.297	3,236,930.985	40.070097	-104.653399
9,000.00	90.00	0.58	7,300.00	1,136.29	1,348.34	1,269,612.297	3,236,931.048	40.070371	-104.653395
9,100.00	90.00	0.58	7,300.00	1,236.28	1,349.36	1,269,712.297	3,236,931.111	40.070646	-104.653392
9,200.00	90.00	0.58	7,300.00	1,336.28	1,350.37	1,269,812.297	3,236,931.174	40.070920	-104.653388
9,300.00	90.00	0.58	7,300.00	1,436.27	1,351.38	1,269,912.297	3,236,931.237	40.071195	-104.653385
9,400.00	90.00	0.58	7,300.00	1,536.27	1,352.39	1,270,012.297	3,236,931.300	40.071469	-104.653381
9,500.00	90.00	0.58	7,300.00	1,636.26	1,353.40	1,270,112.297	3,236,931.363	40.071744	-104.653377
9,600.00	90.00	0.58	7,300.00	1,736.26	1,354.42	1,270,212.297	3,236,931.426	40.072018	-104.653374
9,700.00	90.00	0.58	7,300.00	1,836.25	1,355.43	1,270,312.297	3,236,931.489	40.072293	-104.653370
9,800.00	90.00	0.58	7,300.00	1,936.25	1,356.44	1,270,412.297	3,236,931.552	40.072567	-104.653366
9,900.00	90.00	0.58	7,300.00	2,036.24	1,357.45	1,270,512.297	3,236,931.615	40.072842	-104.653363

Database:	EDM 5000.15 Single User Db	Local Co-ordinate Reference:	Well WARNER 2G-10H-E165
Company:	Crestone Peak Resources	TVD Reference:	WELL @ 4994.00usft (Original Well Elev)
Project:	Sec 10 T1N-R65W	MD Reference:	WELL @ 4994.00usft (Original Well Elev)
Site:	Warner Pad	North Reference:	True
Well:	WARNER 2G-10H-E165	Survey Calculation Method:	Minimum Curvature
Wellbore:	Wellbore #1		
Design:	Plan #3 27Sep18 kjs		

Planned Survey									
Measured Depth (usft)	Inclination (°)	Azimuth (°)	Vertical Depth (usft)	+N/-S (usft)	+E/-W (usft)	Map Northing (usft)	Map Easting (usft)	Latitude	Longitude
10,000.00	90.00	0.58	7,300.00	2,136.24	1,358.47	1,270,612.296	3,236,931.678	40.073116	-104.653359
10,100.00	90.00	0.58	7,300.00	2,236.23	1,359.48	1,270,712.296	3,236,931.741	40.073391	-104.653355
10,200.00	90.00	0.58	7,300.00	2,336.23	1,360.49	1,270,812.296	3,236,931.804	40.073665	-104.653352
10,300.00	90.00	0.58	7,300.00	2,436.22	1,361.50	1,270,912.296	3,236,931.867	40.073940	-104.653348
10,400.00	90.00	0.58	7,300.00	2,536.22	1,362.51	1,271,012.296	3,236,931.930	40.074214	-104.653345
10,500.00	90.00	0.58	7,300.00	2,636.21	1,363.53	1,271,112.296	3,236,931.993	40.074489	-104.653341
10,600.00	90.00	0.58	7,300.00	2,736.21	1,364.54	1,271,212.296	3,236,932.056	40.074763	-104.653337
10,700.00	90.00	0.58	7,300.00	2,836.20	1,365.55	1,271,312.296	3,236,932.119	40.075038	-104.653334
10,800.00	90.00	0.58	7,300.00	2,936.19	1,366.56	1,271,412.296	3,236,932.182	40.075312	-104.653330
10,900.00	90.00	0.58	7,300.00	3,036.19	1,367.58	1,271,512.296	3,236,932.245	40.075587	-104.653326
11,000.00	90.00	0.58	7,300.00	3,136.18	1,368.59	1,271,612.296	3,236,932.308	40.075861	-104.653323
11,100.00	90.00	0.58	7,300.00	3,236.18	1,369.60	1,271,712.296	3,236,932.371	40.076136	-104.653319
11,200.00	90.00	0.58	7,300.00	3,336.17	1,370.61	1,271,812.296	3,236,932.434	40.076410	-104.653315
11,300.00	90.00	0.58	7,300.00	3,436.17	1,371.63	1,271,912.296	3,236,932.497	40.076685	-104.653312
11,400.00	90.00	0.58	7,300.00	3,536.16	1,372.64	1,272,012.296	3,236,932.560	40.076959	-104.653308
11,500.00	90.00	0.58	7,300.00	3,636.16	1,373.65	1,272,112.296	3,236,932.623	40.077234	-104.653305
11,600.00	90.00	0.58	7,300.00	3,736.15	1,374.66	1,272,212.296	3,236,932.686	40.077508	-104.653301
11,700.00	90.00	0.58	7,300.00	3,836.15	1,375.67	1,272,312.296	3,236,932.749	40.077783	-104.653297
11,800.00	90.00	0.58	7,300.00	3,936.14	1,376.69	1,272,412.296	3,236,932.812	40.078057	-104.653294
11,900.00	90.00	0.58	7,300.00	4,036.14	1,377.70	1,272,512.296	3,236,932.875	40.078332	-104.653290
12,000.00	90.00	0.58	7,300.00	4,136.13	1,378.71	1,272,612.296	3,236,932.938	40.078606	-104.653286
12,100.00	90.00	0.58	7,300.00	4,236.13	1,379.72	1,272,712.296	3,236,933.001	40.078881	-104.653283
12,200.00	90.00	0.58	7,300.00	4,336.12	1,380.74	1,272,812.296	3,236,933.064	40.079155	-104.653279
12,300.00	90.00	0.58	7,300.00	4,436.12	1,381.75	1,272,912.296	3,236,933.127	40.079430	-104.653275
12,400.00	90.00	0.58	7,300.00	4,536.11	1,382.76	1,273,012.296	3,236,933.190	40.079704	-104.653272
12,500.00	90.00	0.58	7,300.00	4,636.11	1,383.77	1,273,112.296	3,236,933.253	40.079979	-104.653268
12,600.00	90.00	0.58	7,300.00	4,736.10	1,384.78	1,273,212.296	3,236,933.316	40.080253	-104.653264
12,700.00	90.00	0.58	7,300.00	4,836.10	1,385.80	1,273,312.296	3,236,933.379	40.080528	-104.653261
12,800.00	90.00	0.58	7,300.00	4,936.09	1,386.81	1,273,412.296	3,236,933.442	40.080802	-104.653257
12,900.00	90.00	0.58	7,300.00	5,036.09	1,387.82	1,273,512.296	3,236,933.505	40.081077	-104.653254
13,000.00	90.00	0.58	7,300.00	5,136.08	1,388.83	1,273,612.296	3,236,933.568	40.081351	-104.653250
13,100.00	90.00	0.58	7,300.00	5,236.08	1,389.85	1,273,712.296	3,236,933.631	40.081626	-104.653246
13,200.00	90.00	0.58	7,300.00	5,336.07	1,390.86	1,273,812.297	3,236,933.694	40.081900	-104.653243
13,300.00	90.00	0.58	7,300.00	5,436.07	1,391.87	1,273,912.297	3,236,933.757	40.082175	-104.653239
13,400.00	90.00	0.58	7,300.00	5,536.06	1,392.88	1,274,012.297	3,236,933.820	40.082449	-104.653235
13,500.00	90.00	0.58	7,300.00	5,636.06	1,393.90	1,274,112.297	3,236,933.883	40.082724	-104.653232
13,600.00	90.00	0.58	7,300.00	5,736.05	1,394.91	1,274,212.297	3,236,933.946	40.082998	-104.653228
13,700.00	90.00	0.58	7,300.00	5,836.05	1,395.92	1,274,312.297	3,236,934.009	40.083273	-104.653224
13,800.00	90.00	0.58	7,300.00	5,936.04	1,396.93	1,274,412.297	3,236,934.072	40.083547	-104.653221
13,900.00	90.00	0.58	7,300.00	6,036.04	1,397.94	1,274,512.297	3,236,934.135	40.083822	-104.653217
14,000.00	90.00	0.58	7,300.00	6,136.03	1,398.96	1,274,612.297	3,236,934.198	40.084096	-104.653214
14,100.00	90.00	0.58	7,300.00	6,236.03	1,399.97	1,274,712.296	3,236,934.261	40.084371	-104.653210
14,200.00	90.00	0.58	7,300.00	6,336.02	1,400.98	1,274,812.296	3,236,934.324	40.084645	-104.653206
14,300.00	90.00	0.58	7,300.00	6,436.02	1,401.99	1,274,912.296	3,236,934.387	40.084920	-104.653203
14,400.00	90.00	0.58	7,300.00	6,536.01	1,403.01	1,275,012.296	3,236,934.450	40.085194	-104.653199
14,500.00	90.00	0.58	7,300.00	6,636.01	1,404.02	1,275,112.296	3,236,934.513	40.085469	-104.653195
14,600.00	90.00	0.58	7,300.00	6,736.00	1,405.03	1,275,212.296	3,236,934.576	40.085743	-104.653192
14,700.00	90.00	0.58	7,300.00	6,836.00	1,406.04	1,275,312.296	3,236,934.639	40.086018	-104.653188
14,800.00	90.00	0.58	7,300.00	6,935.99	1,407.05	1,275,412.296	3,236,934.702	40.086292	-104.653184
14,882.63	90.00	0.58	7,300.00	7,018.61	1,407.66	1,275,494.922	3,236,934.527	40.086519	-104.653182
TD at 14882.63 - WARNER 2G-10H-E165 BHL									

Database:	EDM 5000.15 Single User Db	Local Co-ordinate Reference:	Well WARNER 2G-10H-E165
Company:	Crestone Peak Resources	TVD Reference:	WELL @ 4994.00usft (Original Well Elev)
Project:	Sec 10 T1N-R65W	MD Reference:	WELL @ 4994.00usft (Original Well Elev)
Site:	Warner Pad	North Reference:	True
Well:	WARNER 2G-10H-E165	Survey Calculation Method:	Minimum Curvature
Wellbore:	Wellbore #1		
Design:	Plan #3 27Sep18 kjs		

Design Targets									
Target Name									
- hit/miss target	Dip Angle	Dip Dir.	TVD	+N/-S	+E/-W	Northing	Easting	Latitude	Longitude
- Shape	(°)	(°)	(usft)	(usft)	(usft)	(usft)	(usft)		
WARNER 2G-10H-E165	0.00	0.00	7,300.00	13.33	1,336.97	1,268,489.282	3,236,930.341	40.067288	-104.653436
- plan hits target center									
- Point									
WARNER 2G-10H-E165	0.00	0.00	7,300.00	7,018.61	1,407.66	1,275,494.922	3,236,934.527	40.086519	-104.653182
- plan hits target center									
- Point									

Plan Annotations					
	Measured Depth	Vertical Depth	Local Coordinates		
	(usft)	(usft)	+N/-S (usft)	+E/-W (usft)	Comment
	275.00	275.00	0.00	0.00	Start Build 2.00
	924.49	918.94	-37.42	63.04	Hold 12.99 Inc, 120.69 Az
	6,671.05	6,518.45	-696.68	1,173.82	KOP 8/100
	7,876.99	7,300.00	13.33	1,336.97	LP 90 Inc, 0.58 Az
	14,882.63	7,300.00	7,018.61	1,407.66	TD at 14882.63