



Crestone Peak Resources

Well Name:

WARNER 2F-10H-E165

Project Name:

Sec 10 T1N-R65W

Pad Name:

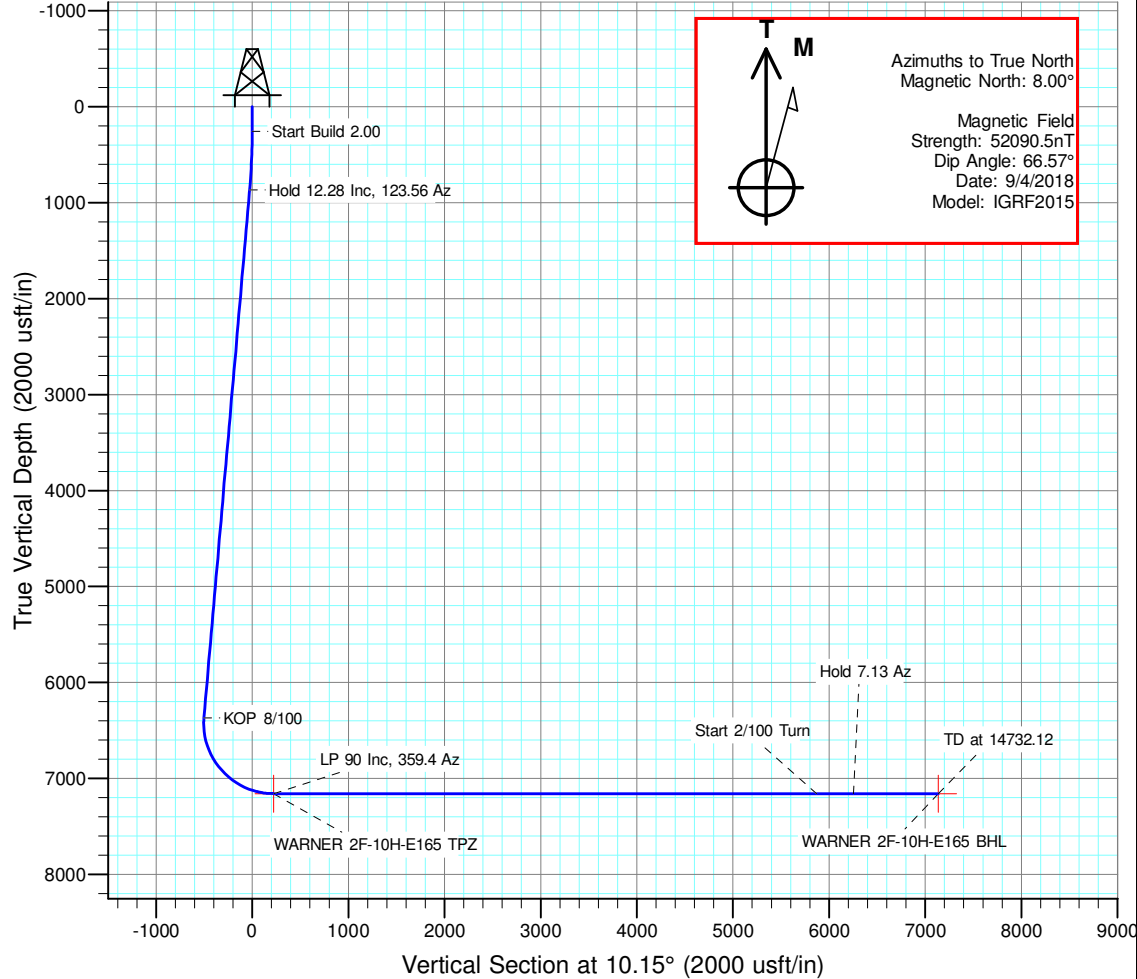
Warner Pad

ANNOTATIONS

MD	Inc	Azi	TVD	+N/-S	+E/-W	VSect	Departure	Annotation
260.00	0.00	0.00	260.00	0.00	0.00	0.00	0.00	Start Build 2.00
873.87	12.28	123.56	869.19	-36.22	54.60	-26.03	65.52	Hold 12.28 Inc, 123.56 Az
6504.44	12.28	123.56	6370.98	-698.11	1052.33	-501.64	1262.84	KOP 8/100
7715.16	90.00	359.40	7160.00	14.41	1186.96	223.45	2025.40	LP 90 Inc, 359.4 Az
13465.16	90.00	359.40	7160.00	5764.09	1126.75	5872.46	7775.40	Start 2/100 Turn
13851.48	90.00	7.13	7160.00	6149.50	1148.72	6255.69	8161.72	Hold 7.13 Az
14732.12	90.00	7.13	7160.00	7023.33	1257.97	7135.10	9042.36	TD at 14732.12

DESIGN TARGET DETAILS

Name	TVD	+N/-S	+E/-W	Northing	Easting	Latitude	Longitude	Shape
WARNER 2F-10H-E165 BHL	7160.00	7023.33	1257.97	1275498.132	3236774.724	40.086532	-104.653753	Point
WARNER 2F-10H-E165 TPZ	7160.00	14.41	1186.96	1268488.851	3236770.247	40.067291	-104.654008	Point

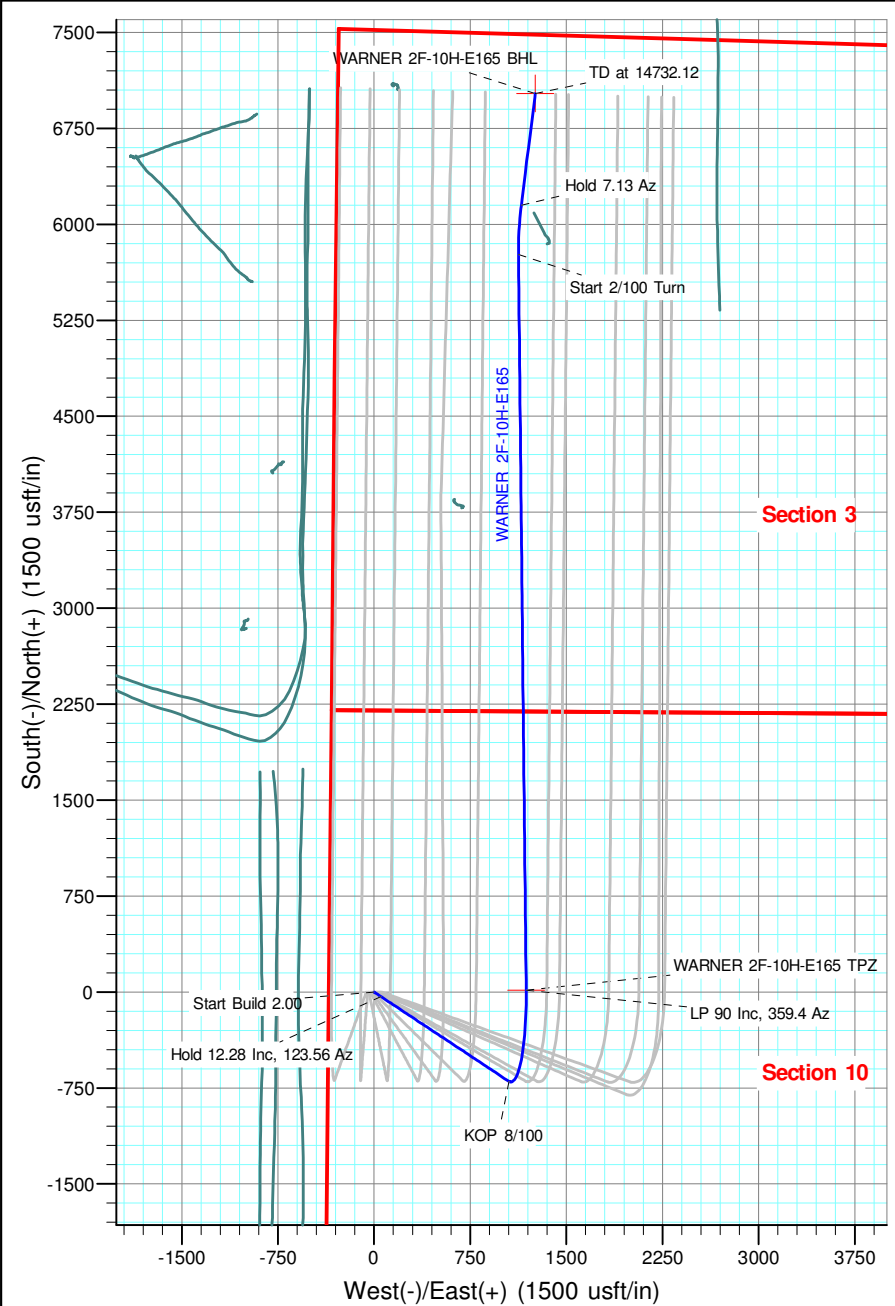


Geodetic Datum:

North American Datum 1983
US State Plane 1983, Colorado Northern Zone

Elevation:

Ground Elevation: 4971.00
KB Elevation: WELL @ 4994.00usft (Original Well Elev)





Crestone Peak Resources

Sec 10 T1N-R65W

Warner Pad

WARNER 2F-10H-E165

Wellbore #1

Plan: Plan #3 27Sep18 kjs

Standard Planning Report - Geographic

28 September, 2018

Database:	EDM 5000.15 Single User Db	Local Co-ordinate Reference:	Well WARNER 2F-10H-E165
Company:	Crestone Peak Resources	TVD Reference:	WELL @ 4994.00usft (Original Well Elev)
Project:	Sec 10 T1N-R65W	MD Reference:	WELL @ 4994.00usft (Original Well Elev)
Site:	Warner Pad	North Reference:	True
Well:	WARNER 2F-10H-E165	Survey Calculation Method:	Minimum Curvature
Wellbore:	Wellbore #1		
Design:	Plan #3 27Sep18 kjs		

Project	Sec 10 T1N-R65W, Wattenberg Field		
Map System:	US State Plane 1983	System Datum:	Mean Sea Level
Geo Datum:	North American Datum 1983		
Map Zone:	Colorado Northern Zone		

Site		Warner Pad			
Site Position:		Northing:	1,268,463.012 usft	Latitude:	40.067253
From:	Lat/Long	Easting:	3,235,523.582 usft	Longitude:	-104.658463
Position Uncertainty:	0.00 usft	Slot Radius:	13-3/16 "	Grid Convergence:	0.54 °

Well	WARNER 2F-10H-E165					
Well Position	+N/-S	0.00 usft	Northing:	1,268,463.174 usft	Latitude:	40.067252
	+E/-W	0.00 usft	Easting:	3,235,583.477 usft	Longitude:	-104.658249
Position Uncertainty		0.00 usft	Wellhead Elevation:		Ground Level:	4,971.00 usft

Wellbore	Wellbore #1				
Magnetics	Model Name	Sample Date	Declination (°)	Dip Angle (°)	Field Strength (nT)
	IGRF2015	9/4/2018	8.00	66.57	52,090.49481143

Design	Plan #3 27Sep18 kjs			
Audit Notes:				
Version:	Phase:	PLAN	Tie On Depth:	0.00
Vertical Section:	Depth From (TVD) (usft)	+N/-S (usft)	+E/-W (usft)	Direction (°)
	0.00	0.00	0.00	10.15

Plan Survey Tool Program	Date	9/28/2018		
Depth From (usft)	Depth To (usft)	Survey (Wellbore)	Tool Name	Remarks
1	0.00	14,732.12 Plan #3 27Sep18 kjs (Wellbore #	MWD	
			OWSG MWD - Standard	

Plan Sections										
Measured Depth (usft)	Inclination (°)	Azimuth (°)	Vertical Depth (usft)	+N/-S (usft)	+E/-W (usft)	Dogleg Rate (°/100usft)	Build Rate (°/100usft)	Turn Rate (°/100usft)	TFO (°)	Target
0.00	0.00	0.00	0.00	0.00	0.00	0.00	0.00	0.00	0.00	
260.00	0.00	0.00	260.00	0.00	0.00	0.00	0.00	0.00	0.00	
873.87	12.28	123.56	869.19	-36.22	54.60	2.00	2.00	0.00	123.56	
6,504.44	12.28	123.56	6,370.98	-698.11	1,052.33	0.00	0.00	0.00	0.00	
7,715.16	90.00	359.40	7,160.00	14.41	1,186.96	8.00	6.42	-10.26	-123.55	WARNER 2F-10H-E1
13,465.16	90.00	359.40	7,160.00	5,764.09	1,126.75	0.00	0.00	0.00	0.00	
13,851.48	90.00	7.13	7,160.00	6,149.50	1,148.72	2.00	0.00	2.00	90.00	
14,732.12	90.00	7.13	7,160.00	7,023.33	1,257.97	0.00	0.00	0.00	0.00	WARNER 2F-10H-E1

Database:	EDM 5000.15 Single User Db	Local Co-ordinate Reference:	Well WARNER 2F-10H-E165
Company:	Crestone Peak Resources	TVD Reference:	WELL @ 4994.00usft (Original Well Elev)
Project:	Sec 10 T1N-R65W	MD Reference:	WELL @ 4994.00usft (Original Well Elev)
Site:	Warner Pad	North Reference:	True
Well:	WARNER 2F-10H-E165	Survey Calculation Method:	Minimum Curvature
Wellbore:	Wellbore #1		
Design:	Plan #3 27Sep18 kjs		

Planned Survey									
Measured Depth (usft)	Inclination (°)	Azimuth (°)	Vertical Depth (usft)	+N/-S (usft)	+E/-W (usft)	Map Northing (usft)	Map Easting (usft)	Latitude	Longitude
0.00	0.00	0.00	0.00	0.00	0.00	1,268,463.174	3,235,583.477	40.067252	-104.658249
100.00	0.00	0.00	100.00	0.00	0.00	1,268,463.174	3,235,583.477	40.067252	-104.658249
200.00	0.00	0.00	200.00	0.00	0.00	1,268,463.174	3,235,583.477	40.067252	-104.658249
260.00	0.00	0.00	260.00	0.00	0.00	1,268,463.174	3,235,583.477	40.067252	-104.658249
Start Build 2.00									
300.00	0.80	123.56	300.00	-0.15	0.23	1,268,463.022	3,235,583.712	40.067252	-104.658248
400.00	2.80	123.56	399.94	-1.89	2.85	1,268,461.310	3,235,586.345	40.067247	-104.658239
500.00	4.80	123.56	499.72	-5.55	8.37	1,268,457.700	3,235,591.902	40.067237	-104.658219
600.00	6.80	123.56	599.20	-11.14	16.79	1,268,452.194	3,235,600.375	40.067221	-104.658189
700.00	8.80	123.56	698.27	-18.64	28.10	1,268,444.799	3,235,611.755	40.067201	-104.658149
800.00	10.80	123.56	796.81	-28.05	42.28	1,268,435.525	3,235,626.026	40.067175	-104.658098
873.87	12.28	123.56	869.19	-36.22	54.60	1,268,427.474	3,235,638.417	40.067153	-104.658054
Hold 12.28 Inc, 123.56 Az									
900.00	12.28	123.56	894.72	-39.29	59.23	1,268,424.447	3,235,643.075	40.067144	-104.658038
1,000.00	12.28	123.56	992.43	-51.05	76.95	1,268,412.860	3,235,660.906	40.067112	-104.657974
1,100.00	12.28	123.56	1,090.14	-62.80	94.67	1,268,401.273	3,235,678.737	40.067080	-104.657911
1,200.00	12.28	123.56	1,187.85	-74.56	112.39	1,268,389.687	3,235,696.567	40.067047	-104.657848
1,300.00	12.28	123.56	1,285.57	-86.31	130.11	1,268,378.100	3,235,714.398	40.067015	-104.657784
1,400.00	12.28	123.56	1,383.28	-98.07	147.83	1,268,366.514	3,235,732.229	40.066983	-104.657721
1,500.00	12.28	123.56	1,480.99	-109.82	165.55	1,268,354.927	3,235,750.060	40.066950	-104.657658
1,600.00	12.28	123.56	1,578.71	-121.58	183.27	1,268,343.340	3,235,767.890	40.066918	-104.657594
1,700.00	12.28	123.56	1,676.42	-133.33	200.99	1,268,331.754	3,235,785.721	40.066886	-104.657531
1,800.00	12.28	123.56	1,774.13	-145.09	218.71	1,268,320.167	3,235,803.552	40.066854	-104.657468
1,900.00	12.28	123.56	1,871.84	-156.84	236.43	1,268,308.581	3,235,821.382	40.066821	-104.657405
2,000.00	12.28	123.56	1,969.56	-168.60	254.15	1,268,296.994	3,235,839.213	40.066789	-104.657341
2,100.00	12.28	123.56	2,067.27	-180.36	271.87	1,268,285.407	3,235,857.044	40.066757	-104.657278
2,200.00	12.28	123.56	2,164.98	-192.11	289.59	1,268,273.821	3,235,874.874	40.066725	-104.657215
2,300.00	12.28	123.56	2,262.70	-203.87	307.31	1,268,262.234	3,235,892.705	40.066692	-104.657151
2,400.00	12.28	123.56	2,360.41	-215.62	325.03	1,268,250.648	3,235,910.536	40.066660	-104.657088
2,500.00	12.28	123.56	2,458.12	-227.38	342.75	1,268,239.061	3,235,928.367	40.066628	-104.657025
2,600.00	12.28	123.56	2,555.84	-239.13	360.47	1,268,227.474	3,235,946.197	40.066596	-104.656961
2,700.00	12.28	123.56	2,653.55	-250.89	378.19	1,268,215.888	3,235,964.028	40.066563	-104.656898
2,800.00	12.28	123.56	2,751.26	-262.64	395.91	1,268,204.301	3,235,981.859	40.066531	-104.656835
2,900.00	12.28	123.56	2,848.97	-274.40	413.63	1,268,192.715	3,235,999.689	40.066499	-104.656771
3,000.00	12.28	123.56	2,946.69	-286.15	431.35	1,268,181.128	3,236,017.520	40.066466	-104.656708
3,100.00	12.28	123.56	3,044.40	-297.91	449.07	1,268,169.541	3,236,035.351	40.066434	-104.656645
3,200.00	12.28	123.56	3,142.11	-309.66	466.79	1,268,157.955	3,236,053.182	40.066402	-104.656581
3,300.00	12.28	123.56	3,239.83	-321.42	484.51	1,268,146.368	3,236,071.012	40.066370	-104.656518
3,400.00	12.28	123.56	3,337.54	-333.17	502.23	1,268,134.782	3,236,088.843	40.066337	-104.656455
3,500.00	12.28	123.56	3,435.25	-344.93	519.95	1,268,123.195	3,236,106.674	40.066305	-104.656392
3,600.00	12.28	123.56	3,532.96	-356.69	537.67	1,268,111.608	3,236,124.504	40.066273	-104.656328
3,700.00	12.28	123.56	3,630.68	-368.44	555.39	1,268,100.022	3,236,142.335	40.066241	-104.656265
3,800.00	12.28	123.56	3,728.39	-380.20	573.11	1,268,088.435	3,236,160.166	40.066208	-104.656202
3,900.00	12.28	123.56	3,826.10	-391.95	590.83	1,268,076.849	3,236,177.996	40.066176	-104.656138
4,000.00	12.28	123.56	3,923.82	-403.71	608.55	1,268,065.262	3,236,195.827	40.066144	-104.656075
4,100.00	12.28	123.56	4,021.53	-415.46	626.27	1,268,053.675	3,236,213.658	40.066111	-104.656012
4,200.00	12.28	123.56	4,119.24	-427.22	643.98	1,268,042.089	3,236,231.489	40.066079	-104.655948
4,300.00	12.28	123.56	4,216.96	-438.97	661.70	1,268,030.502	3,236,249.319	40.066047	-104.655885
4,400.00	12.28	123.56	4,314.67	-450.73	679.42	1,268,018.916	3,236,267.150	40.066015	-104.655822
4,500.00	12.28	123.56	4,412.38	-462.48	697.14	1,268,007.329	3,236,284.981	40.065982	-104.655758
4,600.00	12.28	123.56	4,510.09	-474.24	714.86	1,267,995.742	3,236,302.811	40.065950	-104.655695
4,700.00	12.28	123.56	4,607.81	-485.99	732.58	1,267,984.156	3,236,320.642	40.065918	-104.655632
4,800.00	12.28	123.56	4,705.52	-497.75	750.30	1,267,972.569	3,236,338.473	40.065886	-104.655568
4,900.00	12.28	123.56	4,803.23	-509.50	768.02	1,267,960.983	3,236,356.303	40.065853	-104.655505

Database:	EDM 5000.15 Single User Db	Local Co-ordinate Reference:	Well WARNER 2F-10H-E165
Company:	Crestone Peak Resources	TVD Reference:	WELL @ 4994.00usft (Original Well Elev)
Project:	Sec 10 T1N-R65W	MD Reference:	WELL @ 4994.00usft (Original Well Elev)
Site:	Warner Pad	North Reference:	True
Well:	WARNER 2F-10H-E165	Survey Calculation Method:	Minimum Curvature
Wellbore:	Wellbore #1		
Design:	Plan #3 27Sep18 kjs		

Planned Survey									
Measured Depth (usft)	Inclination (°)	Azimuth (°)	Vertical Depth (usft)	+N/-S (usft)	+E/-W (usft)	Map Northing (usft)	Map Easting (usft)	Latitude	Longitude
5,000.00	12.28	123.56	4,900.95	-521.26	785.74	1,267,949.396	3,236,374.134	40.065821	-104.655442
5,100.00	12.28	123.56	4,998.66	-533.02	803.46	1,267,937.809	3,236,391.965	40.065789	-104.655379
5,200.00	12.28	123.56	5,096.37	-544.77	821.18	1,267,926.223	3,236,409.796	40.065756	-104.655315
5,300.00	12.28	123.56	5,194.08	-556.53	838.90	1,267,914.636	3,236,427.626	40.065724	-104.655252
5,400.00	12.28	123.56	5,291.80	-568.28	856.62	1,267,903.050	3,236,445.457	40.065692	-104.655189
5,500.00	12.28	123.56	5,389.51	-580.04	874.34	1,267,891.463	3,236,463.288	40.065660	-104.655125
5,600.00	12.28	123.56	5,487.22	-591.79	892.06	1,267,879.876	3,236,481.118	40.065627	-104.655062
5,700.00	12.28	123.56	5,584.94	-603.55	909.78	1,267,868.290	3,236,498.949	40.065595	-104.654999
5,800.00	12.28	123.56	5,682.65	-615.30	927.50	1,267,856.703	3,236,516.780	40.065563	-104.654935
5,900.00	12.28	123.56	5,780.36	-627.06	945.22	1,267,845.117	3,236,534.611	40.065531	-104.654872
6,000.00	12.28	123.56	5,878.07	-638.81	962.94	1,267,833.530	3,236,552.441	40.065498	-104.654809
6,100.00	12.28	123.56	5,975.79	-650.57	980.66	1,267,821.943	3,236,570.272	40.065466	-104.654745
6,200.00	12.28	123.56	6,073.50	-662.32	998.38	1,267,810.357	3,236,588.103	40.065434	-104.654682
6,300.00	12.28	123.56	6,171.21	-674.08	1,016.10	1,267,798.770	3,236,605.933	40.065401	-104.654619
6,400.00	12.28	123.56	6,268.93	-685.83	1,033.82	1,267,787.184	3,236,623.764	40.065369	-104.654556
6,500.00	12.28	123.56	6,366.64	-697.59	1,051.54	1,267,775.597	3,236,641.595	40.065337	-104.654492
6,504.44	12.28	123.56	6,370.98	-698.11	1,052.33	1,267,775.082	3,236,642.386	40.065335	-104.654489
KOP 8/100									
6,600.00	10.24	84.97	6,464.82	-702.99	1,069.28	1,267,770.365	3,236,659.383	40.065322	-104.654429
6,700.00	13.44	48.30	6,562.82	-694.47	1,086.84	1,267,779.054	3,236,676.860	40.065345	-104.654366
6,800.00	19.57	29.83	6,658.72	-672.17	1,103.88	1,267,801.509	3,236,693.684	40.065407	-104.654305
6,900.00	26.68	20.40	6,750.65	-636.54	1,120.06	1,267,837.294	3,236,709.528	40.065504	-104.654247
7,000.00	34.17	14.78	6,836.84	-588.26	1,135.07	1,267,885.711	3,236,724.084	40.065637	-104.654194
7,100.00	41.83	11.01	6,915.59	-528.28	1,148.63	1,267,945.817	3,236,737.069	40.065802	-104.654145
7,200.00	49.58	8.22	6,985.38	-457.77	1,160.46	1,268,016.445	3,236,748.229	40.065995	-104.654103
7,300.00	57.38	6.02	7,044.86	-378.08	1,170.33	1,268,096.217	3,236,757.348	40.066214	-104.654068
7,400.00	65.21	4.17	7,092.85	-290.79	1,178.06	1,268,183.583	3,236,764.248	40.066454	-104.654040
7,500.00	73.07	2.54	7,128.43	-197.58	1,183.50	1,268,276.841	3,236,768.795	40.066710	-104.654021
7,600.00	80.93	1.05	7,150.91	-100.27	1,186.52	1,268,374.176	3,236,770.900	40.066977	-104.654010
7,700.00	88.81	359.61	7,159.84	-0.75	1,187.09	1,268,473.694	3,236,770.522	40.067250	-104.654008
7,715.16	90.00	359.40	7,160.00	14.41	1,186.96	1,268,488.851	3,236,770.248	40.067291	-104.654008
LP 90 Inc, 359.4 Az - WARNER 2F-10H-E165 TPZ									
7,800.00	90.00	359.40	7,160.00	99.24	1,186.07	1,268,573.673	3,236,768.554	40.067524	-104.654011
7,900.00	90.00	359.40	7,160.00	199.24	1,185.02	1,268,673.653	3,236,766.558	40.067799	-104.654015
8,000.00	90.00	359.40	7,160.00	299.23	1,183.98	1,268,773.633	3,236,764.561	40.068073	-104.654019
8,100.00	90.00	359.40	7,160.00	399.23	1,182.93	1,268,873.613	3,236,762.565	40.068348	-104.654023
8,200.00	90.00	359.40	7,160.00	499.22	1,181.88	1,268,973.594	3,236,760.569	40.068622	-104.654026
8,300.00	90.00	359.40	7,160.00	599.22	1,180.84	1,269,073.574	3,236,758.572	40.068897	-104.654030
8,400.00	90.00	359.40	7,160.00	699.21	1,179.79	1,269,173.554	3,236,756.576	40.069171	-104.654034
8,500.00	90.00	359.40	7,160.00	799.21	1,178.74	1,269,273.534	3,236,754.580	40.069446	-104.654037
8,600.00	90.00	359.40	7,160.00	899.20	1,177.69	1,269,373.514	3,236,752.583	40.069720	-104.654041
8,700.00	90.00	359.40	7,160.00	999.20	1,176.65	1,269,473.494	3,236,750.587	40.069995	-104.654045
8,800.00	90.00	359.40	7,160.00	1,099.19	1,175.60	1,269,573.474	3,236,748.591	40.070269	-104.654049
8,900.00	90.00	359.40	7,160.00	1,199.18	1,174.55	1,269,673.454	3,236,746.594	40.070544	-104.654052
9,000.00	90.00	359.40	7,160.00	1,299.18	1,173.51	1,269,773.434	3,236,744.598	40.070818	-104.654056
9,100.00	90.00	359.40	7,160.00	1,399.17	1,172.46	1,269,873.414	3,236,742.602	40.071093	-104.654060
9,200.00	90.00	359.40	7,160.00	1,499.17	1,171.41	1,269,973.394	3,236,740.605	40.071367	-104.654064
9,300.00	90.00	359.40	7,160.00	1,599.16	1,170.36	1,270,073.374	3,236,738.609	40.071642	-104.654067
9,400.00	90.00	359.40	7,160.00	1,699.16	1,169.32	1,270,173.354	3,236,736.613	40.071916	-104.654071
9,500.00	90.00	359.40	7,160.00	1,799.15	1,168.27	1,270,273.334	3,236,734.616	40.072191	-104.654075
9,600.00	90.00	359.40	7,160.00	1,899.15	1,167.22	1,270,373.314	3,236,732.620	40.072465	-104.654078
9,700.00	90.00	359.40	7,160.00	1,999.14	1,166.18	1,270,473.295	3,236,730.624	40.072740	-104.654082
9,800.00	90.00	359.40	7,160.00	2,099.14	1,165.13	1,270,573.275	3,236,728.627	40.073014	-104.654086
9,900.00	90.00	359.40	7,160.00	2,199.13	1,164.08	1,270,673.255	3,236,726.631	40.073289	-104.654090

Database:	EDM 5000.15 Single User Db	Local Co-ordinate Reference:	Well WARNER 2F-10H-E165
Company:	Crestone Peak Resources	TVD Reference:	WELL @ 4994.00usft (Original Well Elev)
Project:	Sec 10 T1N-R65W	MD Reference:	WELL @ 4994.00usft (Original Well Elev)
Site:	Warner Pad	North Reference:	True
Well:	WARNER 2F-10H-E165	Survey Calculation Method:	Minimum Curvature
Wellbore:	Wellbore #1		
Design:	Plan #3 27Sep18 kjs		

Planned Survey									
Measured Depth (usft)	Inclination (°)	Azimuth (°)	Vertical Depth (usft)	+N/-S (usft)	+E/-W (usft)	Map Northing (usft)	Map Easting (usft)	Latitude	Longitude
10,000.00	90.00	359.40	7,160.00	2,299.12	1,163.03	1,270,773.235	3,236,724.635	40.073563	-104.654093
10,100.00	90.00	359.40	7,160.00	2,399.12	1,161.99	1,270,873.215	3,236,722.638	40.073838	-104.654097
10,200.00	90.00	359.40	7,160.00	2,499.11	1,160.94	1,270,973.195	3,236,720.642	40.074112	-104.654101
10,300.00	90.00	359.40	7,160.00	2,599.11	1,159.89	1,271,073.175	3,236,718.646	40.074387	-104.654105
10,400.00	90.00	359.40	7,160.00	2,699.10	1,158.85	1,271,173.155	3,236,716.649	40.074661	-104.654108
10,500.00	90.00	359.40	7,160.00	2,799.10	1,157.80	1,271,273.135	3,236,714.653	40.074936	-104.654112
10,600.00	90.00	359.40	7,160.00	2,899.09	1,156.75	1,271,373.115	3,236,712.657	40.075210	-104.654116
10,700.00	90.00	359.40	7,160.00	2,999.09	1,155.70	1,271,473.095	3,236,710.661	40.075485	-104.654119
10,800.00	90.00	359.40	7,160.00	3,099.08	1,154.66	1,271,573.075	3,236,708.664	40.075759	-104.654123
10,900.00	90.00	359.40	7,160.00	3,199.08	1,153.61	1,271,673.055	3,236,706.668	40.076034	-104.654127
11,000.00	90.00	359.40	7,160.00	3,299.07	1,152.56	1,271,773.035	3,236,704.672	40.076308	-104.654131
11,100.00	90.00	359.40	7,160.00	3,399.06	1,151.52	1,271,873.015	3,236,702.675	40.076583	-104.654134
11,200.00	90.00	359.40	7,160.00	3,499.06	1,150.47	1,271,972.996	3,236,700.679	40.076857	-104.654138
11,300.00	90.00	359.40	7,160.00	3,599.05	1,149.42	1,272,072.976	3,236,698.683	40.077132	-104.654142
11,400.00	90.00	359.40	7,160.00	3,699.05	1,148.37	1,272,172.956	3,236,696.686	40.077406	-104.654146
11,500.00	90.00	359.40	7,160.00	3,799.04	1,147.33	1,272,272.936	3,236,694.690	40.077681	-104.654149
11,600.00	90.00	359.40	7,160.00	3,899.04	1,146.28	1,272,372.916	3,236,692.694	40.077955	-104.654153
11,700.00	90.00	359.40	7,160.00	3,999.03	1,145.23	1,272,472.896	3,236,690.697	40.078230	-104.654157
11,800.00	90.00	359.40	7,160.00	4,099.03	1,144.18	1,272,572.876	3,236,688.701	40.078504	-104.654160
11,900.00	90.00	359.40	7,160.00	4,199.02	1,143.14	1,272,672.856	3,236,686.705	40.078779	-104.654164
12,000.00	90.00	359.40	7,160.00	4,299.01	1,142.09	1,272,772.836	3,236,684.708	40.079053	-104.654168
12,100.00	90.00	359.40	7,160.00	4,399.01	1,141.04	1,272,872.816	3,236,682.712	40.079328	-104.654172
12,200.00	90.00	359.40	7,160.00	4,499.00	1,140.00	1,272,972.796	3,236,680.716	40.079602	-104.654175
12,300.00	90.00	359.40	7,160.00	4,599.00	1,138.95	1,273,072.776	3,236,678.719	40.079877	-104.654179
12,400.00	90.00	359.40	7,160.00	4,698.99	1,137.90	1,273,172.756	3,236,676.723	40.080151	-104.654183
12,500.00	90.00	359.40	7,160.00	4,798.99	1,136.85	1,273,272.736	3,236,674.727	40.080426	-104.654187
12,600.00	90.00	359.40	7,160.00	4,898.98	1,135.81	1,273,372.716	3,236,672.730	40.080700	-104.654190
12,700.00	90.00	359.40	7,160.00	4,998.98	1,134.76	1,273,472.697	3,236,670.734	40.080975	-104.654194
12,800.00	90.00	359.40	7,160.00	5,098.97	1,133.71	1,273,572.677	3,236,668.738	40.081249	-104.654198
12,900.00	90.00	359.40	7,160.00	5,198.97	1,132.67	1,273,672.657	3,236,666.741	40.081524	-104.654201
13,000.00	90.00	359.40	7,160.00	5,298.96	1,131.62	1,273,772.638	3,236,664.745	40.081798	-104.654205
13,100.00	90.00	359.40	7,160.00	5,398.95	1,130.57	1,273,872.618	3,236,662.749	40.082073	-104.654209
13,200.00	90.00	359.40	7,160.00	5,498.95	1,129.52	1,273,972.598	3,236,660.753	40.082347	-104.654213
13,300.00	90.00	359.40	7,160.00	5,598.94	1,128.48	1,274,072.578	3,236,658.756	40.082622	-104.654216
13,400.00	90.00	359.40	7,160.00	5,698.94	1,127.43	1,274,172.558	3,236,656.760	40.082896	-104.654220
13,465.16	90.00	359.40	7,160.00	5,764.09	1,126.75	1,274,237.705	3,236,655.459	40.083075	-104.654222
Start 2/100 Turn									
13,500.00	90.00	0.10	7,160.00	5,798.93	1,126.59	1,274,272.541	3,236,654.975	40.083171	-104.654223
13,600.00	90.00	2.10	7,160.00	5,898.91	1,128.51	1,274,372.532	3,236,655.940	40.083445	-104.654216
13,700.00	90.00	4.10	7,160.00	5,998.76	1,133.91	1,274,472.427	3,236,660.394	40.083719	-104.654197
13,800.00	90.00	6.10	7,160.00	6,098.36	1,142.79	1,274,572.107	3,236,668.332	40.083993	-104.654165
13,851.48	90.00	7.13	7,160.00	6,149.50	1,148.72	1,274,623.298	3,236,673.773	40.084133	-104.654144
Hold 7.13 Az									
13,900.00	90.00	7.13	7,160.00	6,197.64	1,154.74	1,274,671.498	3,236,679.335	40.084265	-104.654122
14,000.00	90.00	7.13	7,160.00	6,296.87	1,167.15	1,274,770.839	3,236,690.799	40.084538	-104.654078
14,100.00	90.00	7.13	7,160.00	6,396.10	1,179.55	1,274,870.179	3,236,702.262	40.084810	-104.654034
14,200.00	90.00	7.13	7,160.00	6,495.32	1,191.96	1,274,969.520	3,236,713.726	40.085083	-104.653989
14,300.00	90.00	7.13	7,160.00	6,594.55	1,204.36	1,275,068.861	3,236,725.189	40.085355	-104.653945
14,400.00	90.00	7.13	7,160.00	6,693.78	1,216.77	1,275,168.202	3,236,736.652	40.085627	-104.653901
14,500.00	90.00	7.13	7,160.00	6,793.01	1,229.18	1,275,267.542	3,236,748.116	40.085900	-104.653856
14,600.00	90.00	7.13	7,160.00	6,892.23	1,241.58	1,275,366.883	3,236,759.579	40.086172	-104.653812
14,700.00	90.00	7.13	7,160.00	6,991.46	1,253.99	1,275,466.224	3,236,771.043	40.086445	-104.653768
14,732.12	90.00	7.13	7,160.00	7,023.33	1,257.97	1,275,498.132	3,236,774.725	40.086532	-104.653753
TD at 14732.12 - WARNER 2F-10H-E165 BHL									

Database:	EDM 5000.15 Single User Db	Local Co-ordinate Reference:	Well WARNER 2F-10H-E165
Company:	Crestone Peak Resources	TVD Reference:	WELL @ 4994.00usft (Original Well Elev)
Project:	Sec 10 T1N-R65W	MD Reference:	WELL @ 4994.00usft (Original Well Elev)
Site:	Warner Pad	North Reference:	True
Well:	WARNER 2F-10H-E165	Survey Calculation Method:	Minimum Curvature
Wellbore:	Wellbore #1		
Design:	Plan #3 27Sep18 kjs		

Design Targets									
Target Name	Dip Angle	Dip Dir.	TVD	+N/-S	+E/-W	Northing	Easting	Latitude	Longitude
- hit/miss target	(°)	(°)	(usft)	(usft)	(usft)	(usft)	(usft)		
- Shape									
WARNER 2F-10H-E165	0.00	0.00	7,160.00	7,023.33	1,257.97	1,275,498.132	3,236,774.725	40.086532	-104.653753
- plan hits target center									
- Point									
WARNER 2F-10H-E165	0.00	0.00	7,160.00	14.41	1,186.96	1,268,488.851	3,236,770.248	40.067291	-104.654008
- plan hits target center									
- Point									

Plan Annotations				
Measured	Vertical	Local Coordinates		
Depth	Depth	+N/-S	+E/-W	Comment
(usft)	(usft)	(usft)	(usft)	
260.00	260.00	0.00	0.00	Start Build 2.00
873.87	869.19	-36.22	54.60	Hold 12.28 Inc, 123.56 Az
6,504.44	6,370.98	-698.11	1,052.33	KOP 8/100
7,715.16	7,160.00	14.41	1,186.96	LP 90 Inc, 359.4 Az
13,465.16	7,160.00	5,764.09	1,126.75	Start 2/100 Turn
13,851.48	7,160.00	6,149.50	1,148.72	Hold 7.13 Az
14,732.12	7,160.00	7,023.33	1,257.97	TD at 14732.12