



# Crestone Peak Resources

Well Name:

**WARNER 2A-10H-E165**

Project Name:

**Sec 10 T1N-R65W**

Pad Name:

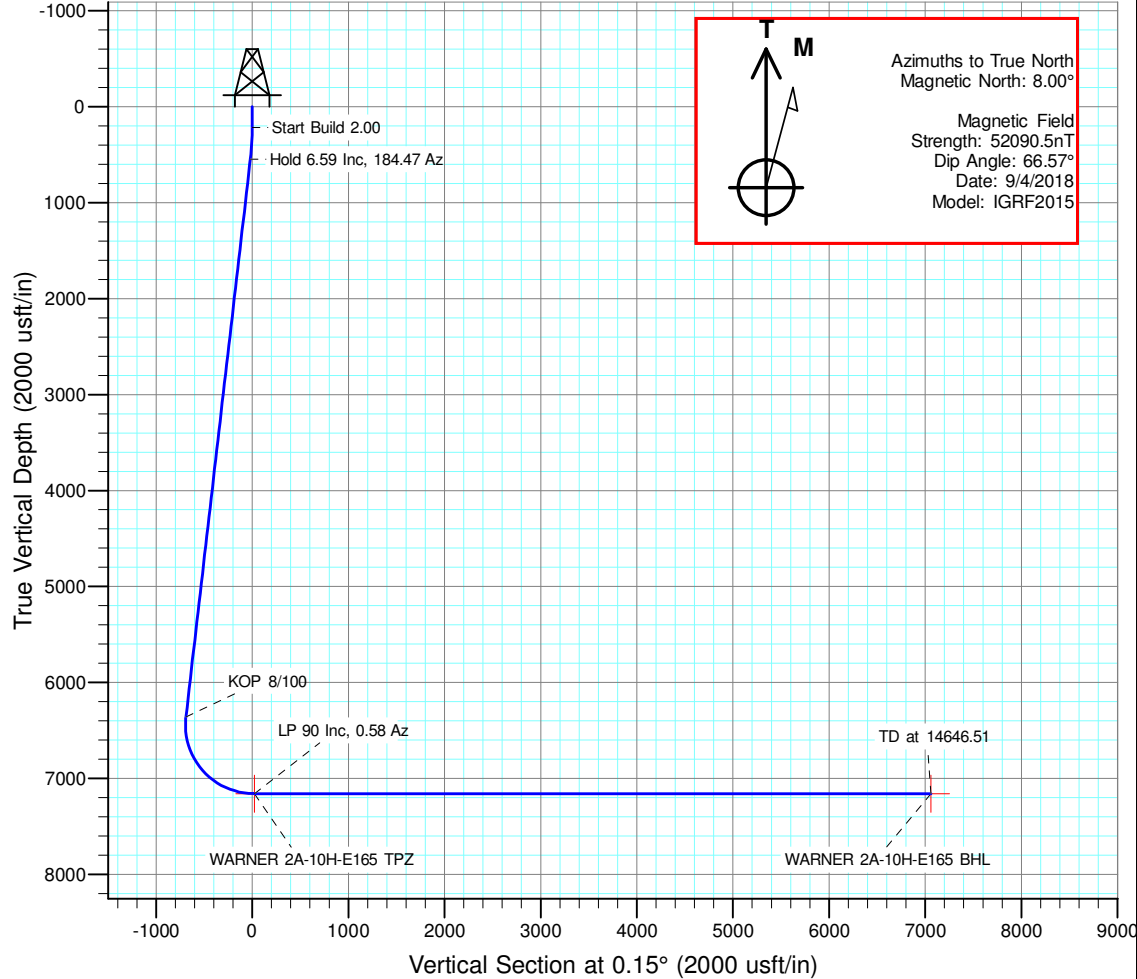
**Warner Pad**

## ANNOTATIONS

MD	Inc	Azi	TVD	+N/-S	+E/-W	Vsect	Departure	Annotation
220.00	0.00	0.00	220.00	0.00	0.00	0.00	0.00	Start Build 2.00
549.70	6.59	184.47	548.97	-18.89	-1.48	-18.90	18.95	Hold 6.59 Inc, 184.47 Az
6401.21	6.59	184.47	6361.77	-688.79	-53.84	-688.93	690.89	KOP 8/100
7608.44	90.00	0.58	7160.00	22.72	-52.90	22.58	1412.73	LP 90 Inc, 0.58 Az
14646.51	90.00	0.58	7160.00	7060.43	18.47	7060.45	8450.80	TD at 14646.51

## DESIGN TARGET DETAILS

Name	TVD	+N/-S	+E/-W	Northing	Easting	Latitude	Longitude	Shape
WARNER 2A-10H-E165 BHL	7160.00	7060.43	18.47	1275523.380	3235485.117	40.086635	-104.658361	Point
WARNER 2A-10H-E165 TPZ	7160.00	22.72	-52.90	1268485.312	3235480.547	40.067315	-104.658616	Point

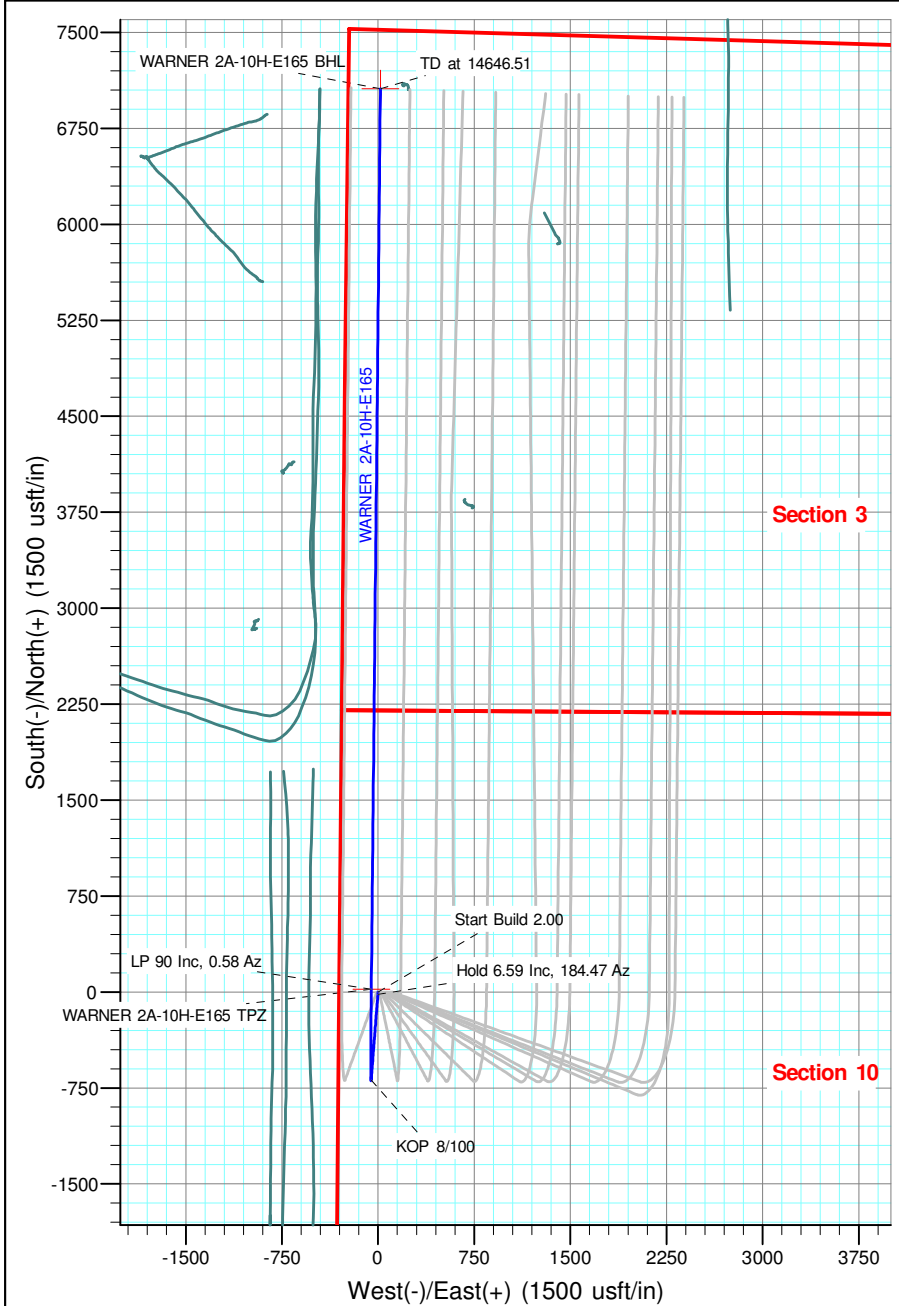


## Geodetic Datum:

North American Datum 1983  
US State Plane 1983, Colorado Northern Zone

## Elevation:

Ground Elevation: 4970.00  
KB Elevation: WELL @ 4993.00usft (Original Well Elev)





# **Crestone Peak Resources**

**Sec 10 T1N-R65W**

**Warner Pad**

**WARNER 2A-10H-E165**

**Wellbore #1**

**Plan: Plan #3 27Sep18 kjs**

## **Standard Planning Report - Geographic**

**28 September, 2018**

<b>Database:</b>	EDM 5000.15 Single User Db	<b>Local Co-ordinate Reference:</b>	Well WARNER 2A-10H-E165
<b>Company:</b>	Crestone Peak Resources	<b>TVD Reference:</b>	WELL @ 4993.00usft (Original Well Elev)
<b>Project:</b>	Sec 10 T1N-R65W	<b>MD Reference:</b>	WELL @ 4993.00usft (Original Well Elev)
<b>Site:</b>	Warner Pad	<b>North Reference:</b>	True
<b>Well:</b>	WARNER 2A-10H-E165	<b>Survey Calculation Method:</b>	Minimum Curvature
<b>Wellbore:</b>	Wellbore #1		
<b>Design:</b>	Plan #3 27Sep18 kjs		

<b>Project</b>	Sec 10 T1N-R65W, Wattenberg Field		
<b>Map System:</b>	US State Plane 1983	<b>System Datum:</b>	Mean Sea Level
<b>Geo Datum:</b>	North American Datum 1983		
<b>Map Zone:</b>	Colorado Northern Zone		

Site	Warner Pad				
Site Position:		Northing:	1,268,463.012 usft	Latitude:	40.067253
From:	Lat/Long	Easting:	3,235,523.582 usft	Longitude:	-104.658463
Position Uncertainty:	0.00 usft	Slot Radius:	13-3/16 "	Grid Convergence:	0.54 °

Well	WARNER 2A-10H-E165					
Well Position	+N/-S	0.00 usft	Northing:	1,268,463.095 usft	Latitude:	40.067253
	+E/-W	0.00 usft	Easting:	3,235,533.658 usft	Longitude:	-104.658427
Position Uncertainty		0.00 usft	Wellhead Elevation:		Ground Level:	4,970.00 usft

<b>Wellbore</b>	Wellbore #1				
<b>Magnetics</b>	<b>Model Name</b>	<b>Sample Date</b>	<b>Declination (°)</b>	<b>Dip Angle (°)</b>	<b>Field Strength (nT)</b>
	IGRF2015	9/4/2018	8.00	66.57	52,090.48477477

<b>Design</b>	Plan #3 27Sep18 kjs			
<b>Audit Notes:</b>				
<b>Version:</b>	<b>Phase:</b>	PLAN	<b>Tie On Depth:</b>	0.00
<b>Vertical Section:</b>	<b>Depth From (TVD) (usft)</b>	<b>+N/-S (usft)</b>	<b>+E/-W (usft)</b>	<b>Direction (°)</b>
	0.00	0.00	0.00	0.15

<b>Plan Survey Tool Program</b>	<b>Date</b>	9/28/2018		
<b>Depth From (usft)</b>	<b>Depth To (usft)</b>	<b>Survey (Wellbore)</b>	<b>Tool Name</b>	<b>Remarks</b>
1	0.00	14,646.51 Plan #3 27Sep18 kjs (Wellbore #	MWD	
			OWSG MWD - Standard	

<b>Plan Sections</b>										
<b>Measured Depth (usft)</b>	<b>Inclination (°)</b>	<b>Azimuth (°)</b>	<b>Vertical Depth (usft)</b>	<b>+N/-S (usft)</b>	<b>+E/-W (usft)</b>	<b>Dogleg Rate (°/100usft)</b>	<b>Build Rate (°/100usft)</b>	<b>Turn Rate (°/100usft)</b>	<b>TFO (°)</b>	<b>Target</b>
0.00	0.00	0.00	0.00	0.00	0.00	0.00	0.00	0.00	0.00	
220.00	0.00	0.00	220.00	0.00	0.00	0.00	0.00	0.00	0.00	
549.70	6.59	184.47	548.97	-18.89	-1.48	2.00	2.00	0.00	184.47	
6,401.21	6.59	184.47	6,361.78	-688.79	-53.84	0.00	0.00	0.00	0.00	
7,608.44	90.00	0.58	7,160.00	22.72	-52.90	8.00	6.91	14.59	176.08	WARNER 2A-10H-E1
14,646.51	90.00	0.58	7,160.00	7,060.43	18.47	0.00	0.00	0.00	0.00	WARNER 2A-10H-E1

<b>Database:</b>	EDM 5000.15 Single User Db	<b>Local Co-ordinate Reference:</b>	Well WARNER 2A-10H-E165
<b>Company:</b>	Crestone Peak Resources	<b>TVD Reference:</b>	WELL @ 4993.00usft (Original Well Elev)
<b>Project:</b>	Sec 10 T1N-R65W	<b>MD Reference:</b>	WELL @ 4993.00usft (Original Well Elev)
<b>Site:</b>	Warner Pad	<b>North Reference:</b>	True
<b>Well:</b>	WARNER 2A-10H-E165	<b>Survey Calculation Method:</b>	Minimum Curvature
<b>Wellbore:</b>	Wellbore #1		
<b>Design:</b>	Plan #3 27Sep18 kjs		

Planned Survey									
Measured Depth (usft)	Inclination (°)	Azimuth (°)	Vertical Depth (usft)	+N/-S (usft)	+E/-W (usft)	Map Northing (usft)	Map Easting (usft)	Latitude	Longitude
0.00	0.00	0.00	0.00	0.00	0.00	1,268,463.095	3,235,533.658	40.067253	-104.658427
100.00	0.00	0.00	100.00	0.00	0.00	1,268,463.095	3,235,533.658	40.067253	-104.658427
200.00	0.00	0.00	200.00	0.00	0.00	1,268,463.095	3,235,533.658	40.067253	-104.658427
220.00	0.00	0.00	220.00	0.00	0.00	1,268,463.095	3,235,533.658	40.067253	-104.658427
<b>Start Build 2.00</b>									
300.00	1.60	184.47	299.99	-1.11	-0.09	1,268,461.981	3,235,533.581	40.067250	-104.658428
400.00	3.60	184.47	399.88	-5.64	-0.44	1,268,457.455	3,235,533.271	40.067238	-104.658429
500.00	5.60	184.47	499.55	-13.63	-1.07	1,268,449.454	3,235,532.722	40.067216	-104.658431
549.70	6.59	184.47	548.97	-18.89	-1.48	1,268,444.189	3,235,532.360	40.067201	-104.658433
<b>Hold 6.59 Inc, 184.47 Az</b>									
600.00	6.59	184.47	598.94	-24.65	-1.93	1,268,438.426	3,235,531.965	40.067185	-104.658434
700.00	6.59	184.47	698.28	-36.10	-2.82	1,268,426.969	3,235,531.179	40.067154	-104.658437
800.00	6.59	184.47	797.62	-47.55	-3.72	1,268,415.513	3,235,530.392	40.067123	-104.658441
900.00	6.59	184.47	896.96	-59.00	-4.61	1,268,404.057	3,235,529.606	40.067091	-104.658444
1,000.00	6.59	184.47	996.29	-70.44	-5.51	1,268,392.601	3,235,528.820	40.067060	-104.658447
1,100.00	6.59	184.47	1,095.63	-81.89	-6.40	1,268,381.145	3,235,528.034	40.067028	-104.658450
1,200.00	6.59	184.47	1,194.97	-93.34	-7.30	1,268,369.688	3,235,527.248	40.066997	-104.658453
1,300.00	6.59	184.47	1,294.31	-104.79	-8.19	1,268,358.232	3,235,526.462	40.066965	-104.658457
1,400.00	6.59	184.47	1,393.65	-116.24	-9.09	1,268,346.776	3,235,525.675	40.066934	-104.658460
1,500.00	6.59	184.47	1,492.99	-127.69	-9.98	1,268,335.320	3,235,524.889	40.066903	-104.658463
1,600.00	6.59	184.47	1,592.32	-139.13	-10.88	1,268,323.864	3,235,524.103	40.066871	-104.658466
1,700.00	6.59	184.47	1,691.66	-150.58	-11.77	1,268,312.407	3,235,523.317	40.066840	-104.658469
1,800.00	6.59	184.47	1,791.00	-162.03	-12.67	1,268,300.951	3,235,522.531	40.066808	-104.658473
1,900.00	6.59	184.47	1,890.34	-173.48	-13.56	1,268,289.495	3,235,521.744	40.066777	-104.658476
2,000.00	6.59	184.47	1,989.68	-184.93	-14.46	1,268,278.039	3,235,520.958	40.066745	-104.658479
2,100.00	6.59	184.47	2,089.02	-196.38	-15.35	1,268,266.583	3,235,520.172	40.066714	-104.658482
2,200.00	6.59	184.47	2,188.36	-207.82	-16.24	1,268,255.126	3,235,519.386	40.066683	-104.658485
2,300.00	6.59	184.47	2,287.69	-219.27	-17.14	1,268,243.670	3,235,518.600	40.066651	-104.658489
2,400.00	6.59	184.47	2,387.03	-230.72	-18.03	1,268,232.214	3,235,517.814	40.066620	-104.658492
2,500.00	6.59	184.47	2,486.37	-242.17	-18.93	1,268,220.758	3,235,517.027	40.066588	-104.658495
2,600.00	6.59	184.47	2,585.71	-253.62	-19.82	1,268,209.301	3,235,516.241	40.066557	-104.658498
2,700.00	6.59	184.47	2,685.05	-265.06	-20.72	1,268,197.845	3,235,515.455	40.066525	-104.658501
2,800.00	6.59	184.47	2,784.39	-276.51	-21.61	1,268,186.389	3,235,514.669	40.066494	-104.658504
2,900.00	6.59	184.47	2,883.73	-287.96	-22.51	1,268,174.933	3,235,513.883	40.066463	-104.658508
3,000.00	6.59	184.47	2,983.06	-299.41	-23.40	1,268,163.477	3,235,513.096	40.066431	-104.658511
3,100.00	6.59	184.47	3,082.40	-310.86	-24.30	1,268,152.020	3,235,512.310	40.066400	-104.658514
3,200.00	6.59	184.47	3,181.74	-322.31	-25.19	1,268,140.564	3,235,511.524	40.066368	-104.658517
3,300.00	6.59	184.47	3,281.08	-333.75	-26.09	1,268,129.108	3,235,510.738	40.066337	-104.658520
3,400.00	6.59	184.47	3,380.42	-345.20	-26.98	1,268,117.652	3,235,509.952	40.066305	-104.658524
3,500.00	6.59	184.47	3,479.76	-356.65	-27.88	1,268,106.196	3,235,509.166	40.066274	-104.658527
3,600.00	6.59	184.47	3,579.09	-368.10	-28.77	1,268,094.739	3,235,508.379	40.066243	-104.658530
3,700.00	6.59	184.47	3,678.43	-379.55	-29.67	1,268,083.283	3,235,507.593	40.066211	-104.658533
3,800.00	6.59	184.47	3,777.77	-391.00	-30.56	1,268,071.827	3,235,506.807	40.066180	-104.658536
3,900.00	6.59	184.47	3,877.11	-402.44	-31.46	1,268,060.371	3,235,506.021	40.066148	-104.658540
4,000.00	6.59	184.47	3,976.45	-413.89	-32.35	1,268,048.914	3,235,505.235	40.066117	-104.658543
4,100.00	6.59	184.47	4,075.79	-425.34	-33.25	1,268,037.458	3,235,504.448	40.066085	-104.658546
4,200.00	6.59	184.47	4,175.13	-436.79	-34.14	1,268,026.002	3,235,503.662	40.066054	-104.658549
4,300.00	6.59	184.47	4,274.46	-448.24	-35.04	1,268,014.546	3,235,502.876	40.066023	-104.658552
4,400.00	6.59	184.47	4,373.80	-459.68	-35.93	1,268,003.090	3,235,502.090	40.065991	-104.658556
4,500.00	6.59	184.47	4,473.14	-471.13	-36.83	1,267,991.633	3,235,501.304	40.065960	-104.658559
4,600.00	6.59	184.47	4,572.48	-482.58	-37.72	1,267,980.177	3,235,500.518	40.065928	-104.658562
4,700.00	6.59	184.47	4,671.82	-494.03	-38.62	1,267,968.721	3,235,499.731	40.065897	-104.658565
4,800.00	6.59	184.47	4,771.16	-505.48	-39.51	1,267,957.265	3,235,498.945	40.065865	-104.658568
4,900.00	6.59	184.47	4,870.50	-516.93	-40.41	1,267,945.809	3,235,498.159	40.065834	-104.658572

<b>Database:</b>	EDM 5000.15 Single User Db	<b>Local Co-ordinate Reference:</b>	Well WARNER 2A-10H-E165
<b>Company:</b>	Crestone Peak Resources	<b>TVD Reference:</b>	WELL @ 4993.00usft (Original Well Elev)
<b>Project:</b>	Sec 10 T1N-R65W	<b>MD Reference:</b>	WELL @ 4993.00usft (Original Well Elev)
<b>Site:</b>	Warner Pad	<b>North Reference:</b>	True
<b>Well:</b>	WARNER 2A-10H-E165	<b>Survey Calculation Method:</b>	Minimum Curvature
<b>Wellbore:</b>	Wellbore #1		
<b>Design:</b>	Plan #3 27Sep18 kjs		

Planned Survey									
Measured Depth (usft)	Inclination (°)	Azimuth (°)	Vertical Depth (usft)	+N/-S (usft)	+E/-W (usft)	Map Northing (usft)	Map Easting (usft)	Latitude	Longitude
5,000.00	6.59	184.47	4,969.83	-528.37	-41.30	1,267,934.352	3,235,497.373	40.065803	-104.658575
5,100.00	6.59	184.47	5,069.17	-539.82	-42.20	1,267,922.896	3,235,496.587	40.065771	-104.658578
5,200.00	6.59	184.47	5,168.51	-551.27	-43.09	1,267,911.440	3,235,495.800	40.065740	-104.658581
5,300.00	6.59	184.47	5,267.85	-562.72	-43.99	1,267,899.984	3,235,495.014	40.065708	-104.658584
5,400.00	6.59	184.47	5,367.19	-574.17	-44.88	1,267,888.528	3,235,494.228	40.065677	-104.658588
5,500.00	6.59	184.47	5,466.53	-585.62	-45.78	1,267,877.071	3,235,493.442	40.065645	-104.658591
5,600.00	6.59	184.47	5,565.86	-597.06	-46.67	1,267,865.615	3,235,492.656	40.065614	-104.658594
5,700.00	6.59	184.47	5,665.20	-608.51	-47.57	1,267,854.159	3,235,491.870	40.065583	-104.658597
5,800.00	6.59	184.47	5,764.54	-619.96	-48.46	1,267,842.703	3,235,491.083	40.065551	-104.658600
5,900.00	6.59	184.47	5,863.88	-631.41	-49.36	1,267,831.246	3,235,490.297	40.065520	-104.658604
6,000.00	6.59	184.47	5,963.22	-642.86	-50.25	1,267,819.790	3,235,489.511	40.065488	-104.658607
6,100.00	6.59	184.47	6,062.56	-654.30	-51.14	1,267,808.334	3,235,488.725	40.065457	-104.658610
6,200.00	6.59	184.47	6,161.90	-665.75	-52.04	1,267,796.878	3,235,487.939	40.065425	-104.658613
6,300.00	6.59	184.47	6,261.23	-677.20	-52.93	1,267,785.422	3,235,487.152	40.065394	-104.658616
6,400.00	6.59	184.47	6,360.57	-688.65	-53.83	1,267,773.965	3,235,486.366	40.065363	-104.658620
6,401.21	6.59	184.47	6,361.78	-688.79	-53.84	1,267,773.827	3,235,486.357	40.065362	-104.658620
<b>KOP 8/100</b>									
6,500.00	1.40	341.85	6,460.38	-693.30	-54.66	1,267,769.303	3,235,485.581	40.065350	-104.658623
6,600.00	9.34	357.85	6,559.86	-684.02	-55.35	1,267,778.576	3,235,484.807	40.065375	-104.658625
6,700.00	17.33	359.14	6,657.09	-660.99	-55.87	1,267,801.604	3,235,484.059	40.065439	-104.658627
6,800.00	25.33	359.63	6,750.17	-624.65	-56.24	1,267,837.940	3,235,483.352	40.065538	-104.658628
6,900.00	33.33	359.90	6,837.28	-575.71	-56.42	1,267,886.876	3,235,482.700	40.065673	-104.658629
7,000.00	41.33	0.07	6,916.73	-515.12	-56.43	1,267,947.460	3,235,482.115	40.065839	-104.658629
7,100.00	49.33	0.19	6,986.98	-444.07	-56.27	1,268,018.513	3,235,481.609	40.066034	-104.658628
7,200.00	57.33	0.29	7,046.66	-363.93	-55.92	1,268,098.651	3,235,481.192	40.066254	-104.658627
7,300.00	65.33	0.37	7,094.60	-276.27	-55.41	1,268,186.315	3,235,480.871	40.066495	-104.658625
7,400.00	73.33	0.45	7,129.88	-182.78	-54.74	1,268,279.799	3,235,480.654	40.066751	-104.658623
7,500.00	81.32	0.51	7,151.81	-85.30	-53.93	1,268,377.283	3,235,480.544	40.067019	-104.658620
7,600.00	89.32	0.57	7,159.95	14.28	-52.98	1,268,476.869	3,235,480.543	40.067292	-104.658617
7,608.44	90.00	0.58	7,160.00	22.72	-52.90	1,268,485.312	3,235,480.548	40.067315	-104.658616
<b>LP 90 Inc, 0.58 Az - WARNER 2A-10H-E165 TPZ</b>									
7,700.00	90.00	0.58	7,160.00	114.27	-51.97	1,268,576.869	3,235,480.606	40.067567	-104.658613
7,800.00	90.00	0.58	7,160.00	214.27	-50.96	1,268,676.869	3,235,480.669	40.067841	-104.658609
7,900.00	90.00	0.58	7,160.00	314.26	-49.95	1,268,776.869	3,235,480.732	40.068116	-104.658606
8,000.00	90.00	0.58	7,160.00	414.26	-48.93	1,268,876.869	3,235,480.795	40.068390	-104.658602
8,100.00	90.00	0.58	7,160.00	514.25	-47.92	1,268,976.869	3,235,480.858	40.068665	-104.658598
8,200.00	90.00	0.58	7,160.00	614.25	-46.91	1,269,076.869	3,235,480.922	40.068939	-104.658595
8,300.00	90.00	0.58	7,160.00	714.24	-45.90	1,269,176.869	3,235,480.985	40.069214	-104.658591
8,400.00	90.00	0.58	7,160.00	814.24	-44.88	1,269,276.869	3,235,481.048	40.069488	-104.658588
8,500.00	90.00	0.58	7,160.00	914.23	-43.87	1,269,376.869	3,235,481.111	40.069763	-104.658584
8,600.00	90.00	0.58	7,160.00	1,014.23	-42.86	1,269,476.869	3,235,481.175	40.070037	-104.658580
8,700.00	90.00	0.58	7,160.00	1,114.22	-41.85	1,269,576.869	3,235,481.238	40.070312	-104.658577
8,800.00	90.00	0.58	7,160.00	1,214.22	-40.84	1,269,676.869	3,235,481.301	40.070586	-104.658573
8,900.00	90.00	0.58	7,160.00	1,314.21	-39.82	1,269,776.869	3,235,481.364	40.070861	-104.658570
9,000.00	90.00	0.58	7,160.00	1,414.21	-38.81	1,269,876.869	3,235,481.428	40.071135	-104.658566
9,100.00	90.00	0.58	7,160.00	1,514.20	-37.80	1,269,976.868	3,235,481.491	40.071410	-104.658562
9,200.00	90.00	0.58	7,160.00	1,614.20	-36.79	1,270,076.868	3,235,481.554	40.071684	-104.658559
9,300.00	90.00	0.58	7,160.00	1,714.19	-35.77	1,270,176.868	3,235,481.617	40.071959	-104.658555
9,400.00	90.00	0.58	7,160.00	1,814.19	-34.76	1,270,276.868	3,235,481.681	40.072233	-104.658551
9,500.00	90.00	0.58	7,160.00	1,914.18	-33.75	1,270,376.868	3,235,481.744	40.072508	-104.658548
9,600.00	90.00	0.58	7,160.00	2,014.18	-32.74	1,270,476.868	3,235,481.807	40.072782	-104.658544
9,700.00	90.00	0.58	7,160.00	2,114.17	-31.72	1,270,576.868	3,235,481.870	40.073057	-104.658541
9,800.00	90.00	0.58	7,160.00	2,214.16	-30.71	1,270,676.868	3,235,481.933	40.073331	-104.658537
9,900.00	90.00	0.58	7,160.00	2,314.16	-29.70	1,270,776.868	3,235,481.997	40.073606	-104.658533

<b>Database:</b>	EDM 5000.15 Single User Db	<b>Local Co-ordinate Reference:</b>	Well WARNER 2A-10H-E165
<b>Company:</b>	Crestone Peak Resources	<b>TVD Reference:</b>	WELL @ 4993.00usft (Original Well Elev)
<b>Project:</b>	Sec 10 T1N-R65W	<b>MD Reference:</b>	WELL @ 4993.00usft (Original Well Elev)
<b>Site:</b>	Warner Pad	<b>North Reference:</b>	True
<b>Well:</b>	WARNER 2A-10H-E165	<b>Survey Calculation Method:</b>	Minimum Curvature
<b>Wellbore:</b>	Wellbore #1		
<b>Design:</b>	Plan #3 27Sep18 kjs		

Planned Survey									
Measured Depth (usft)	Inclination (°)	Azimuth (°)	Vertical Depth (usft)	+N/-S (usft)	+E/-W (usft)	Map Northing (usft)	Map Easting (usft)	Latitude	Longitude
10,000.00	90.00	0.58	7,160.00	2,414.15	-28.69	1,270,876.868	3,235,482.060	40.073880	-104.658530
10,100.00	90.00	0.58	7,160.00	2,514.15	-27.68	1,270,976.868	3,235,482.123	40.074155	-104.658526
10,200.00	90.00	0.58	7,160.00	2,614.14	-26.66	1,271,076.868	3,235,482.186	40.074429	-104.658523
10,300.00	90.00	0.58	7,160.00	2,714.14	-25.65	1,271,176.868	3,235,482.250	40.074704	-104.658519
10,400.00	90.00	0.58	7,160.00	2,814.13	-24.64	1,271,276.868	3,235,482.313	40.074978	-104.658515
10,500.00	90.00	0.58	7,160.00	2,914.13	-23.63	1,271,376.868	3,235,482.376	40.075253	-104.658512
10,600.00	90.00	0.58	7,160.00	3,014.12	-22.61	1,271,476.868	3,235,482.439	40.075527	-104.658508
10,700.00	90.00	0.58	7,160.00	3,114.12	-21.60	1,271,576.868	3,235,482.503	40.075802	-104.658504
10,800.00	90.00	0.58	7,160.00	3,214.11	-20.59	1,271,676.868	3,235,482.566	40.076076	-104.658501
10,900.00	90.00	0.58	7,160.00	3,314.11	-19.58	1,271,776.868	3,235,482.629	40.076351	-104.658497
11,000.00	90.00	0.58	7,160.00	3,414.10	-18.56	1,271,876.868	3,235,482.692	40.076625	-104.658494
11,100.00	90.00	0.58	7,160.00	3,514.10	-17.55	1,271,976.868	3,235,482.756	40.076900	-104.658490
11,200.00	90.00	0.58	7,160.00	3,614.09	-16.54	1,272,076.868	3,235,482.819	40.077174	-104.658486
11,300.00	90.00	0.58	7,160.00	3,714.09	-15.53	1,272,176.868	3,235,482.882	40.077449	-104.658483
11,400.00	90.00	0.58	7,160.00	3,814.08	-14.52	1,272,276.868	3,235,482.945	40.077723	-104.658479
11,500.00	90.00	0.58	7,160.00	3,914.08	-13.50	1,272,376.868	3,235,483.009	40.077998	-104.658476
11,600.00	90.00	0.58	7,160.00	4,014.07	-12.49	1,272,476.868	3,235,483.072	40.078272	-104.658472
11,700.00	90.00	0.58	7,160.00	4,114.07	-11.48	1,272,576.868	3,235,483.135	40.078547	-104.658468
11,800.00	90.00	0.58	7,160.00	4,214.06	-10.47	1,272,676.868	3,235,483.198	40.078821	-104.658465
11,900.00	90.00	0.58	7,160.00	4,314.06	-9.45	1,272,776.868	3,235,483.261	40.079096	-104.658461
12,000.00	90.00	0.58	7,160.00	4,414.05	-8.44	1,272,876.868	3,235,483.325	40.079370	-104.658457
12,100.00	90.00	0.58	7,160.00	4,514.05	-7.43	1,272,976.868	3,235,483.388	40.079645	-104.658454
12,200.00	90.00	0.58	7,160.00	4,614.04	-6.42	1,273,076.868	3,235,483.451	40.079919	-104.658450
12,300.00	90.00	0.58	7,160.00	4,714.04	-5.41	1,273,176.868	3,235,483.514	40.080194	-104.658447
12,400.00	90.00	0.58	7,160.00	4,814.03	-4.39	1,273,276.868	3,235,483.578	40.080468	-104.658443
12,500.00	90.00	0.58	7,160.00	4,914.03	-3.38	1,273,376.868	3,235,483.641	40.080743	-104.658439
12,600.00	90.00	0.58	7,160.00	5,014.02	-2.37	1,273,476.868	3,235,483.704	40.081017	-104.658436
12,700.00	90.00	0.58	7,160.00	5,114.02	-1.36	1,273,576.868	3,235,483.767	40.081292	-104.658432
12,800.00	90.00	0.58	7,160.00	5,214.01	-0.34	1,273,676.868	3,235,483.831	40.081566	-104.658428
12,900.00	90.00	0.58	7,160.00	5,314.01	0.67	1,273,776.869	3,235,483.894	40.081841	-104.658425
13,000.00	90.00	0.58	7,160.00	5,414.00	1.68	1,273,876.869	3,235,483.957	40.082115	-104.658421
13,100.00	90.00	0.58	7,160.00	5,514.00	2.69	1,273,976.868	3,235,484.020	40.082390	-104.658418
13,200.00	90.00	0.58	7,160.00	5,613.99	3.71	1,274,076.868	3,235,484.084	40.082664	-104.658414
13,300.00	90.00	0.58	7,160.00	5,713.99	4.72	1,274,176.868	3,235,484.147	40.082939	-104.658410
13,400.00	90.00	0.58	7,160.00	5,813.98	5.73	1,274,276.868	3,235,484.210	40.083213	-104.658407
13,500.00	90.00	0.58	7,160.00	5,913.98	6.74	1,274,376.868	3,235,484.273	40.083488	-104.658403
13,600.00	90.00	0.58	7,160.00	6,013.97	7.75	1,274,476.868	3,235,484.336	40.083762	-104.658400
13,700.00	90.00	0.58	7,160.00	6,113.97	8.77	1,274,576.868	3,235,484.400	40.084037	-104.658396
13,800.00	90.00	0.58	7,160.00	6,213.96	9.78	1,274,676.868	3,235,484.463	40.084311	-104.658392
13,900.00	90.00	0.58	7,160.00	6,313.95	10.79	1,274,776.868	3,235,484.526	40.084586	-104.658389
14,000.00	90.00	0.58	7,160.00	6,413.95	11.80	1,274,876.868	3,235,484.589	40.084860	-104.658385
14,100.00	90.00	0.58	7,160.00	6,513.94	12.82	1,274,976.868	3,235,484.653	40.085135	-104.658381
14,200.00	90.00	0.58	7,160.00	6,613.94	13.83	1,275,076.868	3,235,484.716	40.085409	-104.658378
14,300.00	90.00	0.58	7,160.00	6,713.93	14.84	1,275,176.868	3,235,484.779	40.085684	-104.658374
14,400.00	90.00	0.58	7,160.00	6,813.93	15.85	1,275,276.868	3,235,484.842	40.085958	-104.658371
14,500.00	90.00	0.58	7,160.00	6,913.92	16.86	1,275,376.868	3,235,484.906	40.086233	-104.658367
14,600.00	90.00	0.58	7,160.00	7,013.92	17.88	1,275,476.868	3,235,484.969	40.086507	-104.658363
14,646.51	90.00	0.58	7,160.00	7,060.43	18.47	1,275,523.381	3,235,485.117	40.086635	-104.658361
TD at 14646.51 - WARNER 2A-10H-E165 BHL									

<b>Database:</b>	EDM 5000.15 Single User Db	<b>Local Co-ordinate Reference:</b>	Well WARNER 2A-10H-E165
<b>Company:</b>	Crestone Peak Resources	<b>TVD Reference:</b>	WELL @ 4993.00usft (Original Well Elev)
<b>Project:</b>	Sec 10 T1N-R65W	<b>MD Reference:</b>	WELL @ 4993.00usft (Original Well Elev)
<b>Site:</b>	Warner Pad	<b>North Reference:</b>	True
<b>Well:</b>	WARNER 2A-10H-E165	<b>Survey Calculation Method:</b>	Minimum Curvature
<b>Wellbore:</b>	Wellbore #1		
<b>Design:</b>	Plan #3 27Sep18 kjs		

Design Targets									
Target Name									
- hit/miss target	Dip Angle	Dip Dir.	TVD	+N/-S	+E/-W	Northing	Easting	Latitude	Longitude
- Shape	(°)	(°)	(usft)	(usft)	(usft)	(usft)	(usft)		
WARNER 2A-10H-E165	0.00	0.00	7,160.00	22.72	-52.90	1,268,485.312	3,235,480.548	40.067315	-104.658616
- plan hits target center									
- Point									
WARNER 2A-10H-E165	0.00	0.00	7,160.00	7,060.43	18.47	1,275,523.381	3,235,485.117	40.086635	-104.658361
- plan hits target center									
- Point									

Plan Annotations				
Measured Depth	Vertical Depth	Local Coordinates		Comment
(usft)	(usft)	+N/-S (usft)	+E/-W (usft)	
220.00	220.00	0.00	0.00	Start Build 2.00
549.70	548.97	-18.89	-1.48	Hold 6.59 Inc, 184.47 Az
6,401.21	6,361.78	-688.79	-53.84	KOP 8/100
7,608.44	7,160.00	22.72	-52.90	LP 90 Inc, 0.58 Az
14,646.51	7,160.00	7,060.43	18.47	TD at 14646.51