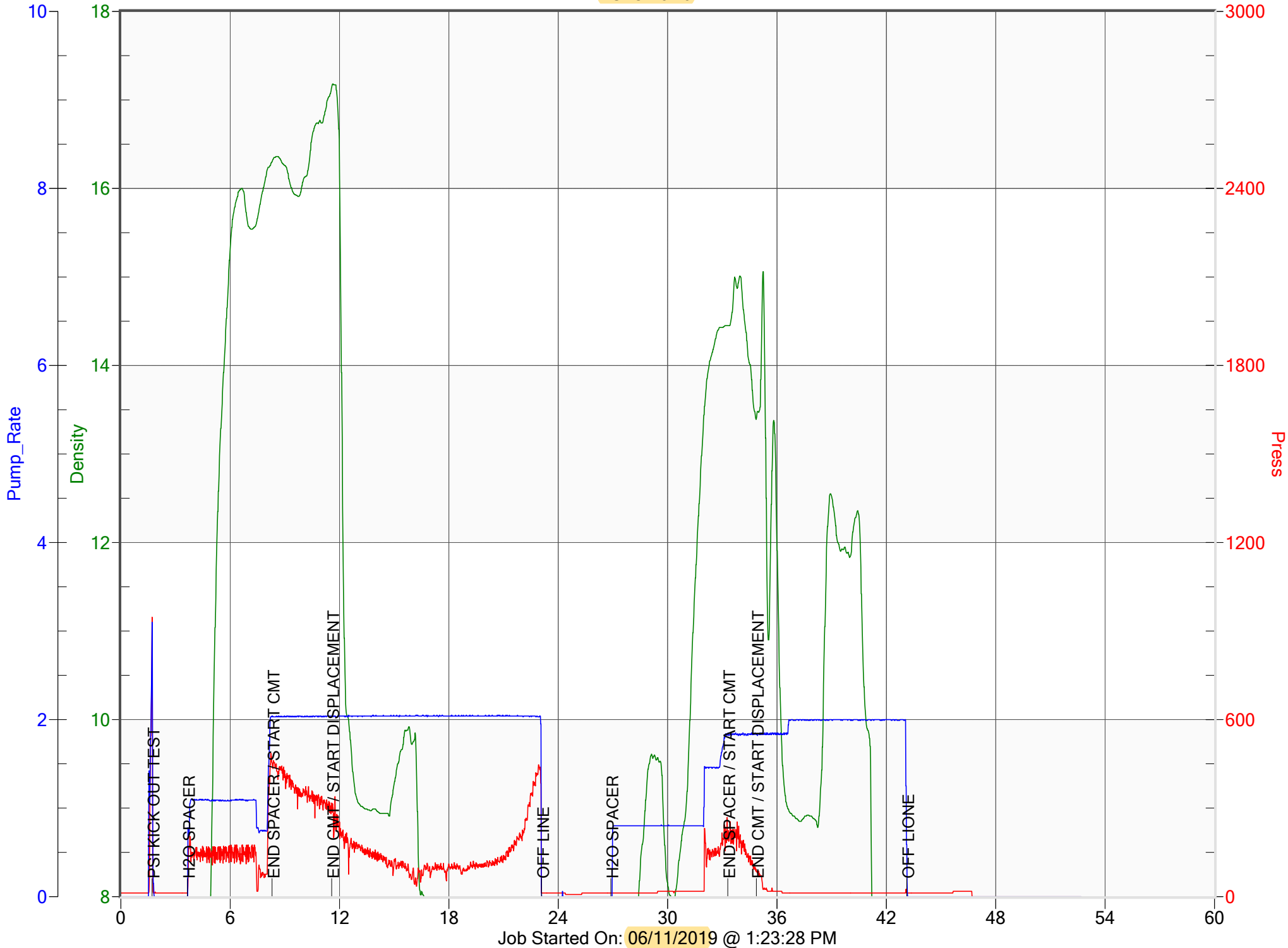


# ANADARKO

BUTCH 3-19



Job Started On: 06/11/2019 @ 1:23:28 PM



Service Order #: 73367

Date: 11-Jun-19

Well Name	Location	County	St	API#		
BUTCH 3-19		WELD	CO	05-123-22141		
Formation	Cement Via	Type Of Service	Well Type	Age	AFE#	PO#
	TUBING	PLUG		REWORK	2143482	

Customer: ANADARKO

Remarks: TEST H2O  
 25 SKS, 6.8 BBLS  
 EST. TOC 6935' - 6535'  
 10 SKS, 2.8 BBLS  
 EST TOC 3870' - 3690'

Customer Rep: DAVID

PH:

WELLBORE DATA				
Type	Size	Weight	Depth	Volume
Surface Casing:				
Production Casing:	4.500	11.6	6,935.0	
Intermediate:				
Drill Pipe:				
Tubing:	2.375	4.7	6,935.0	

Type	Size	Depth (Top)	Depth (Bot)	Volume
Liner:				
Open Hole:				

OTHER DATA		
BHT	Max PSI	Total Depth

Packer or RetainerType / Depth:

--	--

Perf Depths:	#	Total
	0	0
	0	
	0	

TIME	PUMP RATES		DENSITY (lb/gl)	PRESS (psi)	STG TOT (bbls)	TOTAL (bbls)	REMARKS
	WATER (gpm)	PUMP (bpm)					
13:25	0	3.1	6.88	947	0.3	0.3	PSI KICK OUT TEST
13:27	0	0.0	6.88	12	0.0	0.0	H2O SPACER
13:31	12	2.0	16.30	455	5.0	5.0	END SPACER / START CMT
13:35	0	2.0	17.14	317	6.7	11.8	END CMT / START DISPLACEMENT
13:46	0	0.0	6.88	12	23.7	35.5	OFF LINE
14:48	0	0.0	6.88	12	0.0	0.0	H2O SPACER
14:55	4	1.8	14.45	204	6.1	6.1	END SPACER / START CMT
14:56	0	1.8	13.40	84	2.8	9.0	END CMT / START DISPLACEMENT
15:04	0	2.0	6.88	12	14.0	23.2	OFF LINE

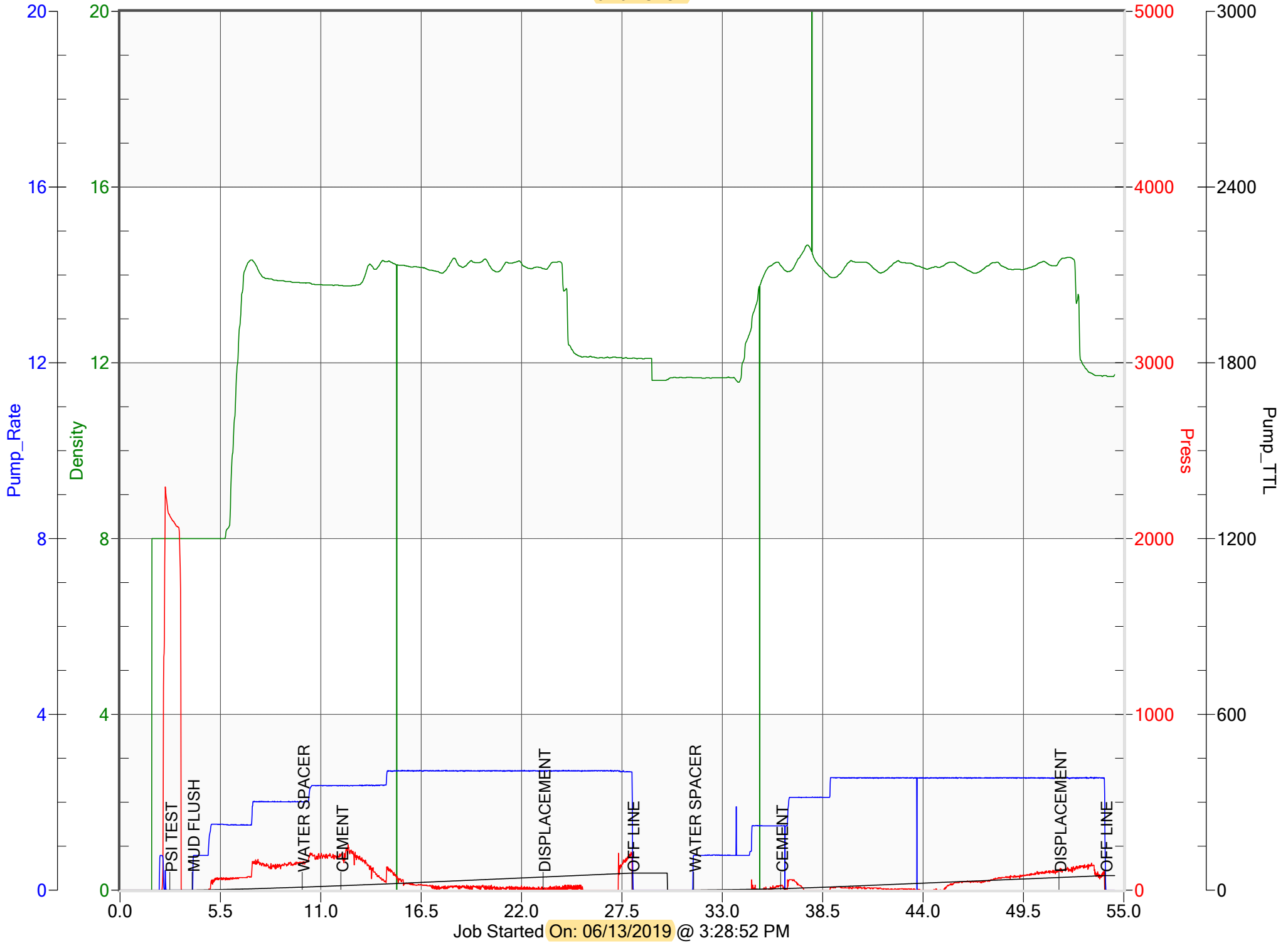
Summary

Max Fl. Rate	Avg Fl. Rate	Max Psi	Avg Psi
3.1	1.0	947	121

Customer Acknowledgement:	Service Rating:	Cementer:	PRODUCTS USED
	<input type="checkbox"/> Satisfactory <input type="checkbox"/> Unsatisfactory	BOHLEN	CLASS G CMT W/ENHANCERS 1ST PLUG, 1.53 YEILD, 15.8 LBS/GAL 2ND PLUG, 1.58 YEILD, 14 LBS/GAL

# ANADARKO

3-19 BUTCH





Service Order #: 74252

Date: 13-Jun-19

Well Name	Location	County	St	API#		
3-19 BUTCH		WELD	CO	512322141		
Formation	Cement Via	Type Of Service	Well Type	Age	AFE#	PO#
	TUBING	PLUG		REWORK		

Customer: ANADARKO

Remarks: CEMENT W/ENHANCERS, 1.58 YIELD,  
 14 LBS/GAL  
 105 SKS, 29.5 BBLs  
 TOC - 2550' - 2262'  
 135 SK, 38 BBLs  
 TOC - 925' - 506'

Customer Rep: DAVID

PH:

WELLBORE DATA				
Type	Size	Weight	Depth	Volume
Surface Casing:	8.625	24.0	725.0	
Production Casing:	4.500	11.6	50.0	
Intermediate:				
Drill Pipe:				
Tubing:	2.375	4.7	2,550.0	

Type	Size	Depth (Top)	Depth (Bot)	Volume
Liner:				
Open Hole:	7.875	725.0	2,500.0	

OTHER DATA		
BHT	Max PSI	Total Depth

Packer or RetainerType / Depth:

--	--

Perf Depths:	#	Total
	0	0
	0	
	0	

TIME	PUMP RATES		DENSITY (lb/gl)	PRESS (psi)	STG TOT (bbls)	TOTAL (bbls)	REMARKS
	WATER (gpm)	PUMP (bpm)					
15:32	0	0.0	8.00	2,129	0.2	0.2	PSI TEST
15:34	0	0.0	8.00	0	0.0	0.2	MUD FLUSH
15:40	0	2.0	13.82	154	9.9	10.0	WATER SPACER
15:42	0	2.4	13.76	198	5.0	15.0	CEMENT
15:53	0	2.7	14.14	12	29.5	44.6	DISPLACEMENT
15:58	0	2.7	12.10	210	7.7	58.0	OFF LINE
16:40	0	0.8	11.66	0	0.0	0.0	WATER SPACER
16:45	58	1.5	14.22	29	5.0	5.0	CEMENT
17:00	0	2.6	14.30	106	38.0	43.0	DISPLACEMENT
17:03	0	1.2	11.71	0	1.9	49.5	OFF LINE

Summary

Max Fl. Rate	Avg Fl. Rate	Max Psi	Avg Psi
2.7	1.2	2,294	55

Customer Acknowledgement:	Service Rating:	Cementer:	PRODUCTS USED
	<input type="checkbox"/> Satisfactory <input type="checkbox"/> Unsatisfactory	ESCALANTE	