



# Crestone Peak Resources

Well Name:

**WARNER 2C-10H-E165**

Project Name:

**Sec 10 T1N-R65W**

Pad Name:

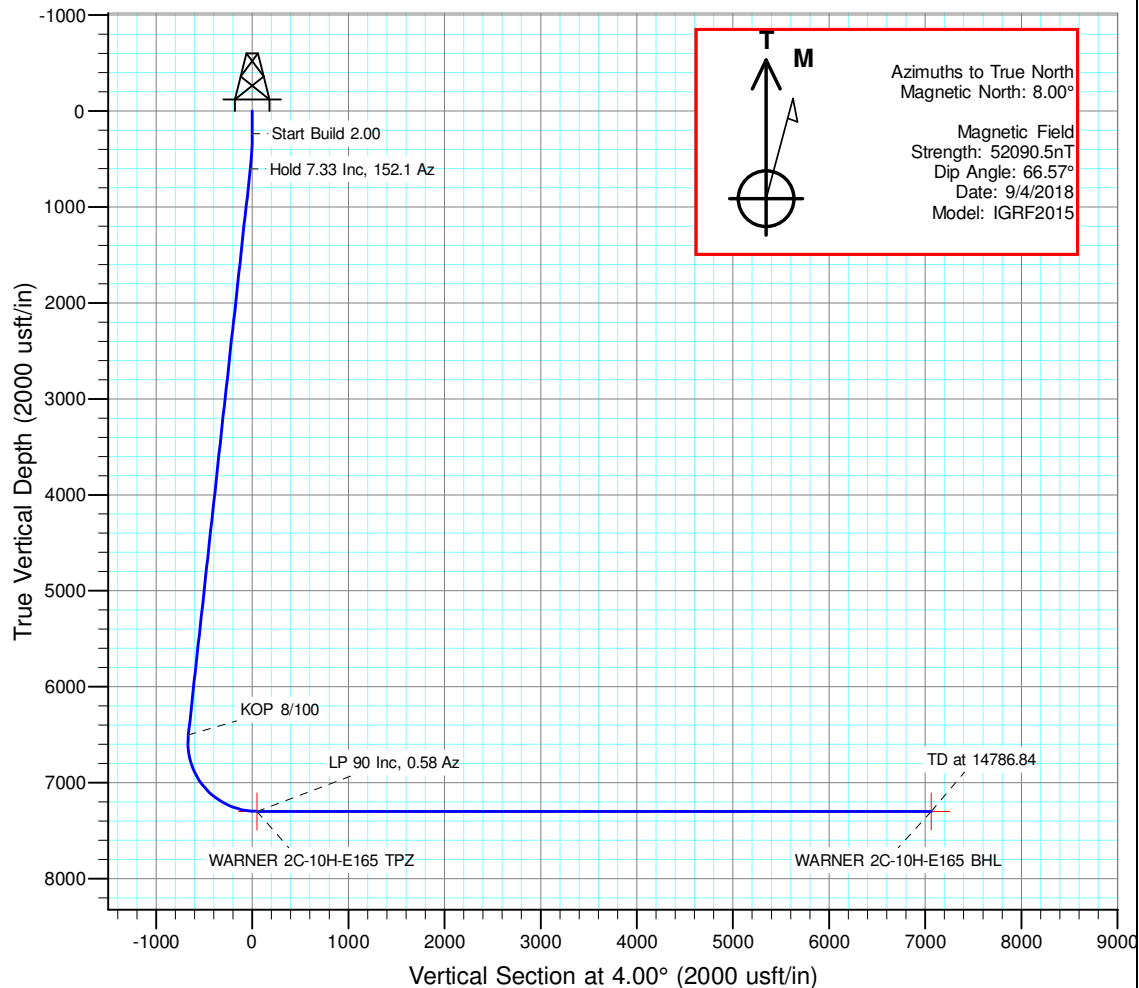
**Warner Pad**

## ANNOTATIONS

MD	Inc	Azi	TVD	+N/-S	+E/-W	VSect	Departure	Annotation
240.00	0.00	0.00	240.00	0.00	0.00	0.00	0.00	Start Build 2.00
606.49	7.33	152.10	605.49	-20.69	10.96	-19.87	23.41	Hold 7.33 Inc, 152.1 Az
6554.59	7.33	152.10	6504.98	-691.33	366.08	-664.08	782.27	KOP 8/100
7760.07	90.00	0.58	7300.00	19.82	422.06	49.25	1510.93	LP 90 Inc, 0.58 Az
14786.84	90.00	0.58	7300.00	7046.23	493.28	7063.48	8537.70	TD at 14786.84

## DESIGN TARGET DETAILS

Name	TVD	+N/-S	+E/-W	Northing	Easting	Latitude	Longitude	Shape
WARNER 2C-10H-E165 BHL	7300.00	7046.23	493.28	1275513.510	3235979.915	40.086595	-104.656593	Point
WARNER 2C-10H-E165 TPZ	7300.00	19.82	422.06	1268486.740	3235975.379	40.067306	-104.656848	Point

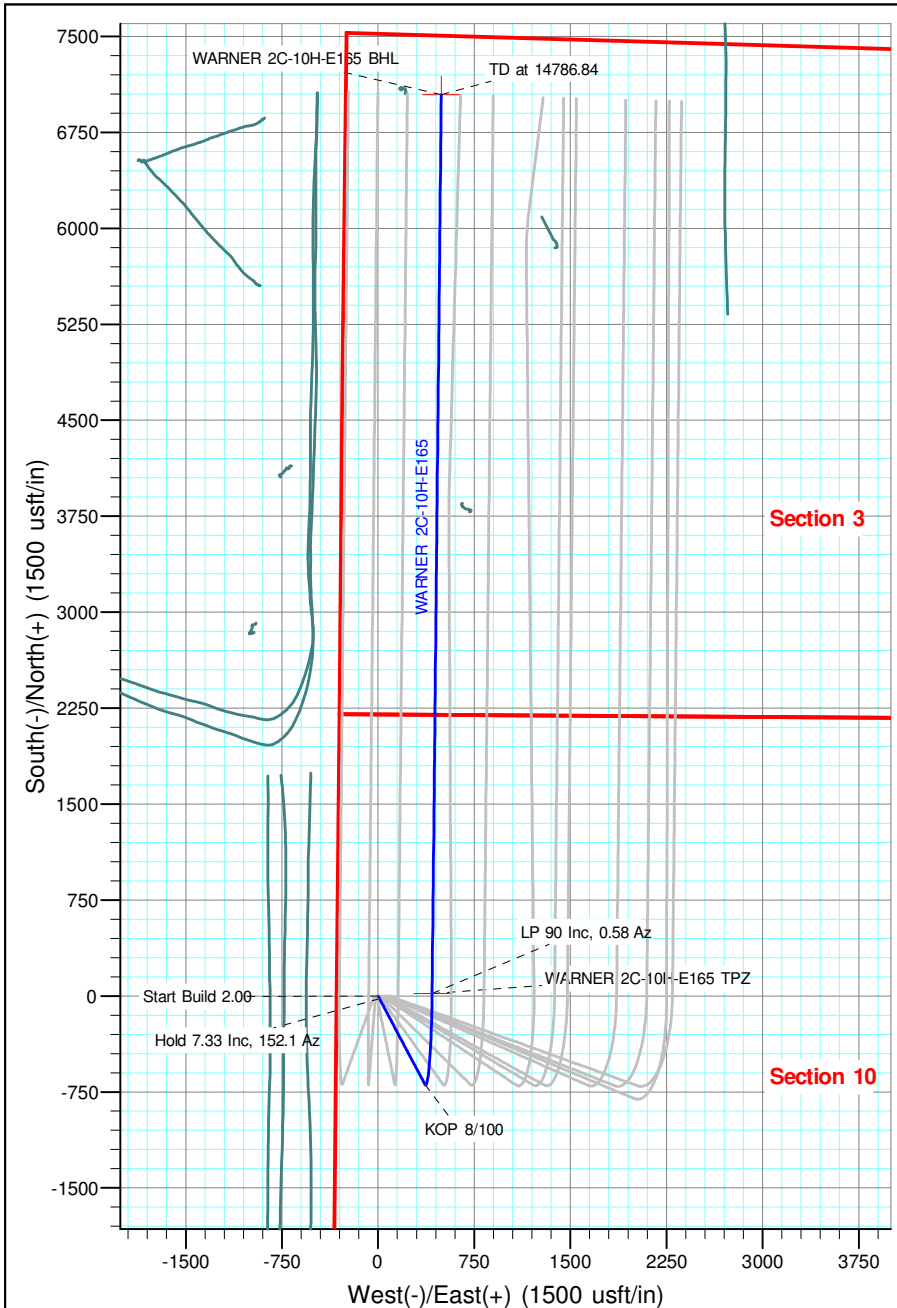


## Geodetic Datum:

North American Datum 1983  
US State Plane 1983, Colorado Northern Zone

## Elevation:

Ground Elevation: 4970.00  
KB Elevation: WELL @ 4993.00usft (Original Well Elev)





# **Crestone Peak Resources**

**Sec 10 T1N-R65W**

**Warner Pad**

**WARNER 2C-10H-E165**

**Wellbore #1**

**Plan: Plan #3 27Sep18 kjs**

## **Standard Planning Report - Geographic**

**01 October, 2018**

<b>Database:</b>	EDM 5000.15 Single User Db	<b>Local Co-ordinate Reference:</b>	Well WARNER 2C-10H-E165
<b>Company:</b>	Crestone Peak Resources	<b>TVD Reference:</b>	WELL @ 4993.00usft (Original Well Elev)
<b>Project:</b>	Sec 10 T1N-R65W	<b>MD Reference:</b>	WELL @ 4993.00usft (Original Well Elev)
<b>Site:</b>	Warner Pad	<b>North Reference:</b>	True
<b>Well:</b>	WARNER 2C-10H-E165	<b>Survey Calculation Method:</b>	Minimum Curvature
<b>Wellbore:</b>	Wellbore #1		
<b>Design:</b>	Plan #3 27Sep18 kjs		

<b>Project</b>	Sec 10 T1N-R65W, Wattenberg Field		
<b>Map System:</b>	US State Plane 1983	<b>System Datum:</b>	Mean Sea Level
<b>Geo Datum:</b>	North American Datum 1983		
<b>Map Zone:</b>	Colorado Northern Zone		

Site	Warner Pad				
Site Position:		Northing:	1,268,463.012 usft	Latitude:	40.067253
From:	Lat/Long	Easting:	3,235,523.582 usft	Longitude:	-104.658463
Position Uncertainty:	0.00 usft	Slot Radius:	13-3/16 "	Grid Convergence:	0.54 °

Well	WARNER 2C-10H-E165					
Well Position	+N/-S	0.00 usft	Northing:	1,268,462.915 usft	Latitude:	40.067252
	+E/-W	0.00 usft	Easting:	3,235,553.532 usft	Longitude:	-104.658356
Position Uncertainty		0.00 usft	Wellhead Elevation:		Ground Level:	4,970.00 usft

<b>Wellbore</b>	Wellbore #1				
<b>Magnetics</b>	<b>Model Name</b>	<b>Sample Date</b>	<b>Declination (°)</b>	<b>Dip Angle (°)</b>	<b>Field Strength (nT)</b>
	IGRF2015	9/4/2018	8.00	66.57	52,090.49167558

<b>Design</b>	Plan #3 27Sep18 kjs			
<b>Audit Notes:</b>				
<b>Version:</b>	<b>Phase:</b>	PLAN	<b>Tie On Depth:</b>	0.00
<b>Vertical Section:</b>	<b>Depth From (TVD) (usft)</b>	<b>+N/-S (usft)</b>	<b>+E/-W (usft)</b>	<b>Direction (°)</b>
	0.00	0.00	0.00	4.00

<b>Plan Survey Tool Program</b>	<b>Date</b>	10/1/2018		
<b>Depth From (usft)</b>	<b>Depth To (usft)</b>	<b>Survey (Wellbore)</b>	<b>Tool Name</b>	<b>Remarks</b>
1	0.00	14,786.84 Plan #3 27Sep18 kjs (Wellbore #	MWD	
			OWSG MWD - Standard	

<b>Plan Sections</b>										
<b>Measured Depth (usft)</b>	<b>Inclination (°)</b>	<b>Azimuth (°)</b>	<b>Vertical Depth (usft)</b>	<b>+N/-S (usft)</b>	<b>+E/-W (usft)</b>	<b>Dogleg Rate (°/100usft)</b>	<b>Build Rate (°/100usft)</b>	<b>Turn Rate (°/100usft)</b>	<b>TFO (°)</b>	<b>Target</b>
0.00	0.00	0.00	0.00	0.00	0.00	0.00	0.00	0.00	0.00	
240.00	0.00	0.00	240.00	0.00	0.00	0.00	0.00	0.00	0.00	
606.49	7.33	152.10	605.49	-20.69	10.96	2.00	2.00	0.00	152.10	
6,554.59	7.33	152.10	6,504.98	-691.33	366.08	0.00	0.00	0.00	0.00	
7,760.07	90.00	0.58	7,300.00	19.82	422.06	8.00	6.86	-12.57	-151.32	WARNER 2C-10H-E1
14,786.84	90.00	0.58	7,300.00	7,046.23	493.28	0.00	0.00	0.00	0.00	WARNER 2C-10H-E1

<b>Database:</b>	EDM 5000.15 Single User Db	<b>Local Co-ordinate Reference:</b>	Well WARNER 2C-10H-E165
<b>Company:</b>	Crestone Peak Resources	<b>TVD Reference:</b>	WELL @ 4993.00usft (Original Well Elev)
<b>Project:</b>	Sec 10 T1N-R65W	<b>MD Reference:</b>	WELL @ 4993.00usft (Original Well Elev)
<b>Site:</b>	Warner Pad	<b>North Reference:</b>	True
<b>Well:</b>	WARNER 2C-10H-E165	<b>Survey Calculation Method:</b>	Minimum Curvature
<b>Wellbore:</b>	Wellbore #1		
<b>Design:</b>	Plan #3 27Sep18 kjs		

Planned Survey									
Measured Depth (usft)	Inclination (°)	Azimuth (°)	Vertical Depth (usft)	+N/-S (usft)	+E/-W (usft)	Map Northing (usft)	Map Easting (usft)	Latitude	Longitude
0.00	0.00	0.00	0.00	0.00	0.00	1,268,462.915	3,235,553.532	40.067252	-104.658356
100.00	0.00	0.00	100.00	0.00	0.00	1,268,462.915	3,235,553.532	40.067252	-104.658356
200.00	0.00	0.00	200.00	0.00	0.00	1,268,462.915	3,235,553.532	40.067252	-104.658356
240.00	0.00	0.00	240.00	0.00	0.00	1,268,462.915	3,235,553.532	40.067252	-104.658356
<b>Start Build 2.00</b>									
300.00	1.20	152.10	300.00	-0.56	0.29	1,268,462.363	3,235,553.831	40.067251	-104.658355
400.00	3.20	152.10	399.92	-3.95	2.09	1,268,458.987	3,235,555.659	40.067241	-104.658349
500.00	5.20	152.10	499.64	-10.42	5.52	1,268,452.548	3,235,559.148	40.067223	-104.658337
600.00	7.20	152.10	599.05	-19.96	10.57	1,268,443.053	3,235,564.292	40.067197	-104.658318
606.49	7.33	152.10	605.49	-20.69	10.96	1,268,442.331	3,235,564.683	40.067195	-104.658317
<b>Hold 7.33 Inc, 152.1 Az</b>									
700.00	7.33	152.10	698.24	-31.23	16.54	1,268,431.841	3,235,570.366	40.067166	-104.658297
800.00	7.33	152.10	797.42	-42.51	22.51	1,268,420.624	3,235,576.443	40.067135	-104.658276
900.00	7.33	152.10	896.60	-53.78	28.48	1,268,409.406	3,235,582.520	40.067104	-104.658255
1,000.00	7.33	152.10	995.79	-65.06	34.45	1,268,398.188	3,235,588.597	40.067073	-104.658233
1,100.00	7.33	152.10	1,094.97	-76.33	40.42	1,268,386.971	3,235,594.674	40.067043	-104.658212
1,200.00	7.33	152.10	1,194.15	-87.61	46.39	1,268,375.753	3,235,600.752	40.067012	-104.658191
1,300.00	7.33	152.10	1,293.33	-98.88	52.36	1,268,364.535	3,235,606.829	40.066981	-104.658169
1,400.00	7.33	152.10	1,392.52	-110.16	58.33	1,268,353.318	3,235,612.906	40.066950	-104.658148
1,500.00	7.33	152.10	1,491.70	-121.43	64.30	1,268,342.100	3,235,618.983	40.066919	-104.658127
1,600.00	7.33	152.10	1,590.88	-132.71	70.27	1,268,330.882	3,235,625.060	40.066888	-104.658105
1,700.00	7.33	152.10	1,690.07	-143.98	76.24	1,268,319.664	3,235,631.138	40.066857	-104.658084
1,800.00	7.33	152.10	1,789.25	-155.26	82.21	1,268,308.447	3,235,637.215	40.066826	-104.658063
1,900.00	7.33	152.10	1,888.43	-166.53	88.18	1,268,297.229	3,235,643.292	40.066795	-104.658041
2,000.00	7.33	152.10	1,987.61	-177.81	94.15	1,268,286.011	3,235,649.369	40.066764	-104.658020
2,100.00	7.33	152.10	2,086.80	-189.08	100.12	1,268,274.794	3,235,655.446	40.066733	-104.657999
2,200.00	7.33	152.10	2,185.98	-200.36	106.10	1,268,263.576	3,235,661.524	40.066702	-104.657977
2,300.00	7.33	152.10	2,285.16	-211.63	112.07	1,268,252.358	3,235,667.601	40.066671	-104.657956
2,400.00	7.33	152.10	2,384.34	-222.90	118.04	1,268,241.141	3,235,673.678	40.066640	-104.657935
2,500.00	7.33	152.10	2,483.53	-234.18	124.01	1,268,229.923	3,235,679.755	40.066609	-104.657913
2,600.00	7.33	152.10	2,582.71	-245.45	129.98	1,268,218.705	3,235,685.832	40.066578	-104.657892
2,700.00	7.33	152.10	2,681.89	-256.73	135.95	1,268,207.487	3,235,691.910	40.066547	-104.657871
2,800.00	7.33	152.10	2,781.08	-268.00	141.92	1,268,196.270	3,235,697.987	40.066516	-104.657849
2,900.00	7.33	152.10	2,880.26	-279.28	147.89	1,268,185.052	3,235,704.064	40.066485	-104.657828
3,000.00	7.33	152.10	2,979.44	-290.55	153.86	1,268,173.834	3,235,710.141	40.066454	-104.657807
3,100.00	7.33	152.10	3,078.62	-301.83	159.83	1,268,162.617	3,235,716.218	40.066423	-104.657785
3,200.00	7.33	152.10	3,177.81	-313.10	165.80	1,268,151.399	3,235,722.296	40.066393	-104.657764
3,300.00	7.33	152.10	3,276.99	-324.38	171.77	1,268,140.181	3,235,728.373	40.066362	-104.657743
3,400.00	7.33	152.10	3,376.17	-335.65	177.74	1,268,128.964	3,235,734.450	40.066331	-104.657721
3,500.00	7.33	152.10	3,475.36	-346.93	183.71	1,268,117.746	3,235,740.527	40.066300	-104.657700
3,600.00	7.33	152.10	3,574.54	-358.20	189.68	1,268,106.528	3,235,746.604	40.066269	-104.657679
3,700.00	7.33	152.10	3,673.72	-369.48	195.65	1,268,095.310	3,235,752.682	40.066238	-104.657657
3,800.00	7.33	152.10	3,772.90	-380.75	201.62	1,268,084.093	3,235,758.759	40.066207	-104.657636
3,900.00	7.33	152.10	3,872.09	-392.03	207.59	1,268,072.875	3,235,764.836	40.066176	-104.657615
4,000.00	7.33	152.10	3,971.27	-403.30	213.56	1,268,061.657	3,235,770.913	40.066145	-104.657593
4,100.00	7.33	152.10	4,070.45	-414.58	219.53	1,268,050.440	3,235,776.990	40.066114	-104.657572
4,200.00	7.33	152.10	4,169.64	-425.85	225.50	1,268,039.222	3,235,783.068	40.066083	-104.657551
4,300.00	7.33	152.10	4,268.82	-437.13	231.47	1,268,028.004	3,235,789.145	40.066052	-104.657529
4,400.00	7.33	152.10	4,368.00	-448.40	237.45	1,268,016.787	3,235,795.222	40.066021	-104.657508
4,500.00	7.33	152.10	4,467.18	-459.68	243.42	1,268,005.569	3,235,801.299	40.065990	-104.657487
4,600.00	7.33	152.10	4,566.37	-470.95	249.39	1,267,994.351	3,235,807.376	40.065959	-104.657465
4,700.00	7.33	152.10	4,665.55	-482.23	255.36	1,267,983.134	3,235,813.454	40.065928	-104.657444
4,800.00	7.33	152.10	4,764.73	-493.50	261.33	1,267,971.916	3,235,819.531	40.065897	-104.657423
4,900.00	7.33	152.10	4,863.92	-504.78	267.30	1,267,960.698	3,235,825.608	40.065866	-104.657401

<b>Database:</b>	EDM 5000.15 Single User Db	<b>Local Co-ordinate Reference:</b>	Well WARNER 2C-10H-E165
<b>Company:</b>	Crestone Peak Resources	<b>TVD Reference:</b>	WELL @ 4993.00usft (Original Well Elev)
<b>Project:</b>	Sec 10 T1N-R65W	<b>MD Reference:</b>	WELL @ 4993.00usft (Original Well Elev)
<b>Site:</b>	Warner Pad	<b>North Reference:</b>	True
<b>Well:</b>	WARNER 2C-10H-E165	<b>Survey Calculation Method:</b>	Minimum Curvature
<b>Wellbore:</b>	Wellbore #1		
<b>Design:</b>	Plan #3 27Sep18 kjs		

Planned Survey									
Measured Depth (usft)	Inclination (°)	Azimuth (°)	Vertical Depth (usft)	+N/-S (usft)	+E/-W (usft)	Map Northing (usft)	Map Easting (usft)	Latitude	Longitude
5,000.00	7.33	152.10	4,963.10	-516.05	273.27	1,267,949.480	3,235,831.685	40.065835	-104.657380
5,100.00	7.33	152.10	5,062.28	-527.33	279.24	1,267,938.263	3,235,837.762	40.065804	-104.657359
5,200.00	7.33	152.10	5,161.46	-538.60	285.21	1,267,927.045	3,235,843.840	40.065773	-104.657337
5,300.00	7.33	152.10	5,260.65	-549.88	291.18	1,267,915.827	3,235,849.917	40.065743	-104.657316
5,400.00	7.33	152.10	5,359.83	-561.15	297.15	1,267,904.610	3,235,855.994	40.065712	-104.657295
5,500.00	7.33	152.10	5,459.01	-572.43	303.12	1,267,893.392	3,235,862.071	40.065681	-104.657273
5,600.00	7.33	152.10	5,558.20	-583.70	309.09	1,267,882.174	3,235,868.148	40.065650	-104.657252
5,700.00	7.33	152.10	5,657.38	-594.98	315.06	1,267,870.957	3,235,874.226	40.065619	-104.657231
5,800.00	7.33	152.10	5,756.56	-606.25	321.03	1,267,859.739	3,235,880.303	40.065588	-104.657209
5,900.00	7.33	152.10	5,855.74	-617.53	327.00	1,267,848.521	3,235,886.380	40.065557	-104.657188
6,000.00	7.33	152.10	5,954.93	-628.80	332.97	1,267,837.303	3,235,892.457	40.065526	-104.657167
6,100.00	7.33	152.10	6,054.11	-640.08	338.94	1,267,826.086	3,235,898.534	40.065495	-104.657145
6,200.00	7.33	152.10	6,153.29	-651.35	344.91	1,267,814.868	3,235,904.612	40.065464	-104.657124
6,300.00	7.33	152.10	6,252.47	-662.62	350.88	1,267,803.650	3,235,910.689	40.065433	-104.657103
6,400.00	7.33	152.10	6,351.66	-673.90	356.85	1,267,792.433	3,235,916.766	40.065402	-104.657081
6,500.00	7.33	152.10	6,450.84	-685.17	362.82	1,267,781.215	3,235,922.843	40.065371	-104.657060
6,554.59	7.33	152.10	6,504.98	-691.33	366.08	1,267,775.091	3,235,926.161	40.065354	-104.657048
<b>KOP 8/100</b>									
6,600.00	4.49	129.25	6,550.15	-695.02	368.82	1,267,771.431	3,235,928.929	40.065344	-104.657039
6,700.00	6.27	34.54	6,649.86	-693.00	374.96	1,267,773.509	3,235,935.047	40.065350	-104.657017
6,800.00	13.65	15.22	6,748.31	-677.09	381.16	1,267,789.471	3,235,941.097	40.065393	-104.656994
6,900.00	21.47	9.55	6,843.59	-647.62	387.30	1,267,819.004	3,235,946.960	40.065474	-104.656972
7,000.00	29.39	6.83	6,933.83	-605.14	393.27	1,267,861.535	3,235,952.522	40.065591	-104.656951
7,100.00	37.34	5.19	7,017.29	-550.49	398.94	1,267,916.235	3,235,957.677	40.065741	-104.656931
7,200.00	45.30	4.06	7,092.33	-484.73	404.21	1,267,982.040	3,235,962.322	40.065921	-104.656912
7,300.00	53.27	3.20	7,157.51	-409.15	408.97	1,268,057.669	3,235,966.368	40.066129	-104.656895
7,400.00	61.25	2.51	7,211.54	-325.20	413.14	1,268,141.649	3,235,969.735	40.066359	-104.656880
7,500.00	69.24	1.91	7,253.38	-234.53	416.62	1,268,232.348	3,235,972.359	40.066608	-104.656868
7,600.00	77.22	1.38	7,282.22	-138.90	419.36	1,268,327.998	3,235,974.189	40.066871	-104.656858
7,700.00	85.20	0.87	7,297.49	-40.18	421.29	1,268,426.738	3,235,975.188	40.067142	-104.656851
7,760.07	90.00	0.58	7,300.00	19.82	422.06	1,268,486.740	3,235,975.380	40.067306	-104.656848
<b>LP 90 Inc, 0.58 Az - WARNER 2C-10H-E165 TPZ</b>									
7,800.00	90.00	0.58	7,300.00	59.75	422.46	1,268,526.668	3,235,975.405	40.067416	-104.656847
7,900.00	90.00	0.58	7,300.00	159.74	423.47	1,268,626.668	3,235,975.468	40.067691	-104.656843
8,000.00	90.00	0.58	7,300.00	259.74	424.48	1,268,726.668	3,235,975.531	40.067965	-104.656840
8,100.00	90.00	0.58	7,300.00	359.73	425.50	1,268,826.668	3,235,975.594	40.068240	-104.656836
8,200.00	90.00	0.58	7,300.00	459.73	426.51	1,268,926.668	3,235,975.657	40.068514	-104.656832
8,300.00	90.00	0.58	7,300.00	559.72	427.52	1,269,026.668	3,235,975.721	40.068789	-104.656829
8,400.00	90.00	0.58	7,300.00	659.71	428.53	1,269,126.667	3,235,975.784	40.069063	-104.656825
8,500.00	90.00	0.58	7,300.00	759.71	429.55	1,269,226.667	3,235,975.847	40.069338	-104.656821
8,600.00	90.00	0.58	7,300.00	859.70	430.56	1,269,326.667	3,235,975.910	40.069612	-104.656818
8,700.00	90.00	0.58	7,300.00	959.70	431.57	1,269,426.667	3,235,975.973	40.069887	-104.656814
8,800.00	90.00	0.58	7,300.00	1,059.69	432.58	1,269,526.667	3,235,976.036	40.070161	-104.656811
8,900.00	90.00	0.58	7,300.00	1,159.69	433.59	1,269,626.667	3,235,976.100	40.070436	-104.656807
9,000.00	90.00	0.58	7,300.00	1,259.68	434.61	1,269,726.667	3,235,976.163	40.070710	-104.656803
9,100.00	90.00	0.58	7,300.00	1,359.68	435.62	1,269,826.667	3,235,976.226	40.070985	-104.656800
9,200.00	90.00	0.58	7,300.00	1,459.67	436.63	1,269,926.667	3,235,976.289	40.071259	-104.656796
9,300.00	90.00	0.58	7,300.00	1,559.67	437.64	1,270,026.667	3,235,976.352	40.071534	-104.656792
9,400.00	90.00	0.58	7,300.00	1,659.66	438.66	1,270,126.667	3,235,976.415	40.071808	-104.656789
9,500.00	90.00	0.58	7,300.00	1,759.66	439.67	1,270,226.667	3,235,976.478	40.072083	-104.656785
9,600.00	90.00	0.58	7,300.00	1,859.65	440.68	1,270,326.667	3,235,976.542	40.072357	-104.656782
9,700.00	90.00	0.58	7,300.00	1,959.65	441.69	1,270,426.667	3,235,976.605	40.072632	-104.656778
9,800.00	90.00	0.58	7,300.00	2,059.64	442.70	1,270,526.667	3,235,976.668	40.072906	-104.656774
9,900.00	90.00	0.58	7,300.00	2,159.64	443.72	1,270,626.667	3,235,976.731	40.073181	-104.656771

<b>Database:</b>	EDM 5000.15 Single User Db	<b>Local Co-ordinate Reference:</b>	Well WARNER 2C-10H-E165
<b>Company:</b>	Crestone Peak Resources	<b>TVD Reference:</b>	WELL @ 4993.00usft (Original Well Elev)
<b>Project:</b>	Sec 10 T1N-R65W	<b>MD Reference:</b>	WELL @ 4993.00usft (Original Well Elev)
<b>Site:</b>	Warner Pad	<b>North Reference:</b>	True
<b>Well:</b>	WARNER 2C-10H-E165	<b>Survey Calculation Method:</b>	Minimum Curvature
<b>Wellbore:</b>	Wellbore #1		
<b>Design:</b>	Plan #3 27Sep18 kjs		

Planned Survey									
Measured Depth (usft)	Inclination (°)	Azimuth (°)	Vertical Depth (usft)	+N/-S (usft)	+E/-W (usft)	Map Northing (usft)	Map Easting (usft)	Latitude	Longitude
10,000.00	90.00	0.58	7,300.00	2,259.63	444.73	1,270,726.667	3,235,976.794	40.073455	-104.656767
10,100.00	90.00	0.58	7,300.00	2,359.63	445.74	1,270,826.667	3,235,976.857	40.073730	-104.656763
10,200.00	90.00	0.58	7,300.00	2,459.62	446.75	1,270,926.667	3,235,976.921	40.074004	-104.656760
10,300.00	90.00	0.58	7,300.00	2,559.62	447.77	1,271,026.667	3,235,976.984	40.074279	-104.656756
10,400.00	90.00	0.58	7,300.00	2,659.61	448.78	1,271,126.667	3,235,977.047	40.074553	-104.656753
10,500.00	90.00	0.58	7,300.00	2,759.61	449.79	1,271,226.667	3,235,977.110	40.074828	-104.656749
10,600.00	90.00	0.58	7,300.00	2,859.60	450.80	1,271,326.667	3,235,977.173	40.075102	-104.656745
10,700.00	90.00	0.58	7,300.00	2,959.60	451.82	1,271,426.667	3,235,977.236	40.075377	-104.656742
10,800.00	90.00	0.58	7,300.00	3,059.59	452.83	1,271,526.667	3,235,977.300	40.075651	-104.656738
10,900.00	90.00	0.58	7,300.00	3,159.59	453.84	1,271,626.667	3,235,977.363	40.075926	-104.656734
11,000.00	90.00	0.58	7,300.00	3,259.58	454.85	1,271,726.667	3,235,977.426	40.076200	-104.656731
11,100.00	90.00	0.58	7,300.00	3,359.58	455.86	1,271,826.667	3,235,977.489	40.076475	-104.656727
11,200.00	90.00	0.58	7,300.00	3,459.57	456.88	1,271,926.667	3,235,977.552	40.076749	-104.656724
11,300.00	90.00	0.58	7,300.00	3,559.57	457.89	1,272,026.667	3,235,977.615	40.077024	-104.656720
11,400.00	90.00	0.58	7,300.00	3,659.56	458.90	1,272,126.667	3,235,977.678	40.077298	-104.656716
11,500.00	90.00	0.58	7,300.00	3,759.56	459.91	1,272,226.667	3,235,977.742	40.077573	-104.656713
11,600.00	90.00	0.58	7,300.00	3,859.55	460.93	1,272,326.667	3,235,977.805	40.077847	-104.656709
11,700.00	90.00	0.58	7,300.00	3,959.55	461.94	1,272,426.667	3,235,977.868	40.078122	-104.656705
11,800.00	90.00	0.58	7,300.00	4,059.54	462.95	1,272,526.667	3,235,977.931	40.078396	-104.656702
11,900.00	90.00	0.58	7,300.00	4,159.54	463.96	1,272,626.667	3,235,977.994	40.078671	-104.656698
12,000.00	90.00	0.58	7,300.00	4,259.53	464.97	1,272,726.667	3,235,978.057	40.078945	-104.656695
12,100.00	90.00	0.58	7,300.00	4,359.53	465.99	1,272,826.667	3,235,978.121	40.079220	-104.656691
12,200.00	90.00	0.58	7,300.00	4,459.52	467.00	1,272,926.667	3,235,978.184	40.079494	-104.656687
12,300.00	90.00	0.58	7,300.00	4,559.52	468.01	1,273,026.667	3,235,978.247	40.079769	-104.656684
12,400.00	90.00	0.58	7,300.00	4,659.51	469.02	1,273,126.667	3,235,978.310	40.080043	-104.656680
12,500.00	90.00	0.58	7,300.00	4,759.50	470.04	1,273,226.666	3,235,978.373	40.080318	-104.656677
12,600.00	90.00	0.58	7,300.00	4,859.50	471.05	1,273,326.666	3,235,978.436	40.080592	-104.656673
12,700.00	90.00	0.58	7,300.00	4,959.49	472.06	1,273,426.666	3,235,978.499	40.080867	-104.656669
12,800.00	90.00	0.58	7,300.00	5,059.49	473.07	1,273,526.666	3,235,978.563	40.081141	-104.656666
12,900.00	90.00	0.58	7,300.00	5,159.48	474.09	1,273,626.666	3,235,978.626	40.081416	-104.656662
13,000.00	90.00	0.58	7,300.00	5,259.48	475.10	1,273,726.666	3,235,978.689	40.081690	-104.656658
13,100.00	90.00	0.58	7,300.00	5,359.47	476.11	1,273,826.667	3,235,978.752	40.081965	-104.656655
13,200.00	90.00	0.58	7,300.00	5,459.47	477.12	1,273,926.667	3,235,978.815	40.082239	-104.656651
13,300.00	90.00	0.58	7,300.00	5,559.46	478.13	1,274,026.667	3,235,978.878	40.082514	-104.656648
13,400.00	90.00	0.58	7,300.00	5,659.46	479.15	1,274,126.667	3,235,978.942	40.082788	-104.656644
13,500.00	90.00	0.58	7,300.00	5,759.45	480.16	1,274,226.667	3,235,979.005	40.083063	-104.656640
13,600.00	90.00	0.58	7,300.00	5,859.45	481.17	1,274,326.667	3,235,979.068	40.083337	-104.656637
13,700.00	90.00	0.58	7,300.00	5,959.44	482.18	1,274,426.667	3,235,979.131	40.083612	-104.656633
13,800.00	90.00	0.58	7,300.00	6,059.44	483.20	1,274,526.667	3,235,979.194	40.083886	-104.656629
13,900.00	90.00	0.58	7,300.00	6,159.43	484.21	1,274,626.667	3,235,979.257	40.084161	-104.656626
14,000.00	90.00	0.58	7,300.00	6,259.43	485.22	1,274,726.667	3,235,979.321	40.084435	-104.656622
14,100.00	90.00	0.58	7,300.00	6,359.42	486.23	1,274,826.667	3,235,979.384	40.084710	-104.656619
14,200.00	90.00	0.58	7,300.00	6,459.42	487.24	1,274,926.667	3,235,979.447	40.084984	-104.656615
14,300.00	90.00	0.58	7,300.00	6,559.41	488.26	1,275,026.667	3,235,979.510	40.085259	-104.656611
14,400.00	90.00	0.58	7,300.00	6,659.41	489.27	1,275,126.667	3,235,979.573	40.085533	-104.656608
14,500.00	90.00	0.58	7,300.00	6,759.40	490.28	1,275,226.667	3,235,979.636	40.085808	-104.656604
14,600.00	90.00	0.58	7,300.00	6,859.40	491.29	1,275,326.667	3,235,979.699	40.086082	-104.656600
14,700.00	90.00	0.58	7,300.00	6,959.39	492.31	1,275,426.667	3,235,979.763	40.086357	-104.656597
14,786.84	90.00	0.58	7,300.00	7,046.23	493.28	1,275,513.510	3,235,979.916	40.086595	-104.656593
TD at 14786.84 - WARNER 2C-10H-E165 BHL									

<b>Database:</b>	EDM 5000.15 Single User Db	<b>Local Co-ordinate Reference:</b>	Well WARNER 2C-10H-E165
<b>Company:</b>	Crestone Peak Resources	<b>TVD Reference:</b>	WELL @ 4993.00usft (Original Well Elev)
<b>Project:</b>	Sec 10 T1N-R65W	<b>MD Reference:</b>	WELL @ 4993.00usft (Original Well Elev)
<b>Site:</b>	Warner Pad	<b>North Reference:</b>	True
<b>Well:</b>	WARNER 2C-10H-E165	<b>Survey Calculation Method:</b>	Minimum Curvature
<b>Wellbore:</b>	Wellbore #1		
<b>Design:</b>	Plan #3 27Sep18 kjs		

Design Targets									
Target Name	Dip Angle	Dip Dir.	TVD	+N/-S	+E/-W	Northing	Easting	Latitude	Longitude
- hit/miss target	(°)	(°)	(usft)	(usft)	(usft)	(usft)	(usft)		
- Shape									
WARNER 2C-10H-E165	0.00	0.00	7,300.00	7,046.23	493.28	1,275,513.510	3,235,979.916	40.086595	-104.656593
- plan hits target center									
- Point									
WARNER 2C-10H-E165	0.00	0.00	7,300.00	19.82	422.06	1,268,486.740	3,235,975.380	40.067306	-104.656848
- plan hits target center									
- Point									

Plan Annotations				
Measured Depth	Vertical Depth	Local Coordinates		Comment
(usft)	(usft)	+N/-S (usft)	+E/-W (usft)	
240.00	240.00	0.00	0.00	Start Build 2.00
606.49	605.49	-20.69	10.96	Hold 7.33 Inc, 152.1 Az
6,554.59	6,504.98	-691.33	366.08	KOP 8/100
7,760.07	7,300.00	19.82	422.06	LP 90 Inc, 0.58 Az
14,786.84	7,300.00	7,046.23	493.28	TD at 14786.84