



Crestone Peak Resources

Well Name:

WARNER 2AA-10H-E165

Project Name:

Sec 10 T1N-R65W

Pad Name:

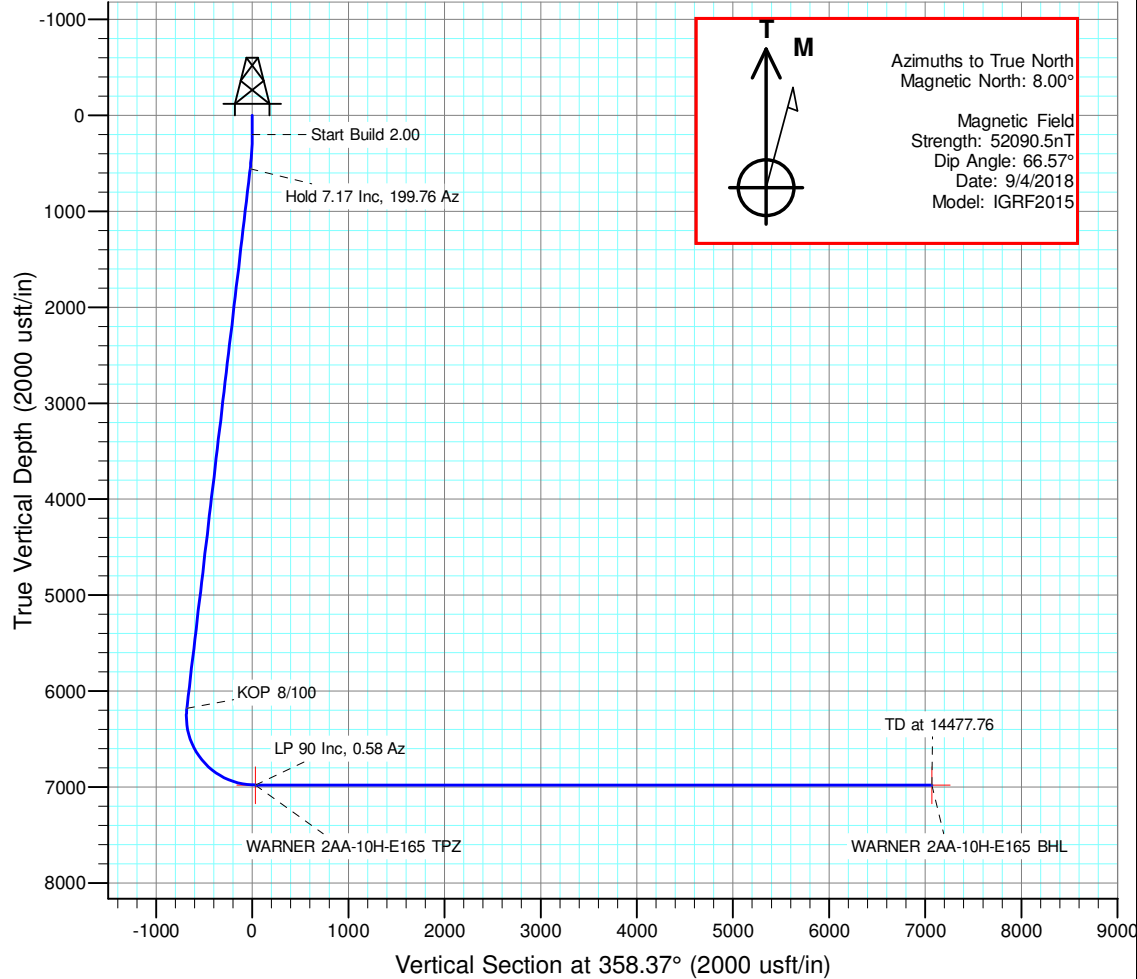
Warner Pad

ANNOTATIONS

MD	Inc	Azi	TVD	+N/-S	+E/-W	VSect	Departure	Annotation
200.00	0.00	0.00	200.00	0.00	0.00	0.00	0.00	Start Build 2.00
558.62	7.17	199.76	557.68	-21.10	-7.58	-20.87	22.42	Hold 7.17 Inc, 199.76 Az
6225.30	7.17	199.76	6180.03	-686.96	-246.73	-679.65	729.92	KOP 8/100
7434.96	90.00	0.58	6980.00	24.54	-272.60	32.30	1455.53	LP 90 Inc, 0.58 Az
14477.76	90.00	0.58	6980.00	7066.98	-201.45	7069.85	8498.33	TD at 14477.76

DESIGN TARGET DETAILS

Name	TVD	+N/-S	+E/-W	Northing	Easting	Latitude	Longitude	Shape
WARNER 2AA-10H-E165 BHL	6980.00	7066.98	-201.45	1275527.755	3235255.071	40.086653	-104.659183	Point
WARNER 2AA-10H-E165 TPZ	6980.00	24.54	-272.60	1268484.960	3235250.761	40.067320	-104.659437	Point

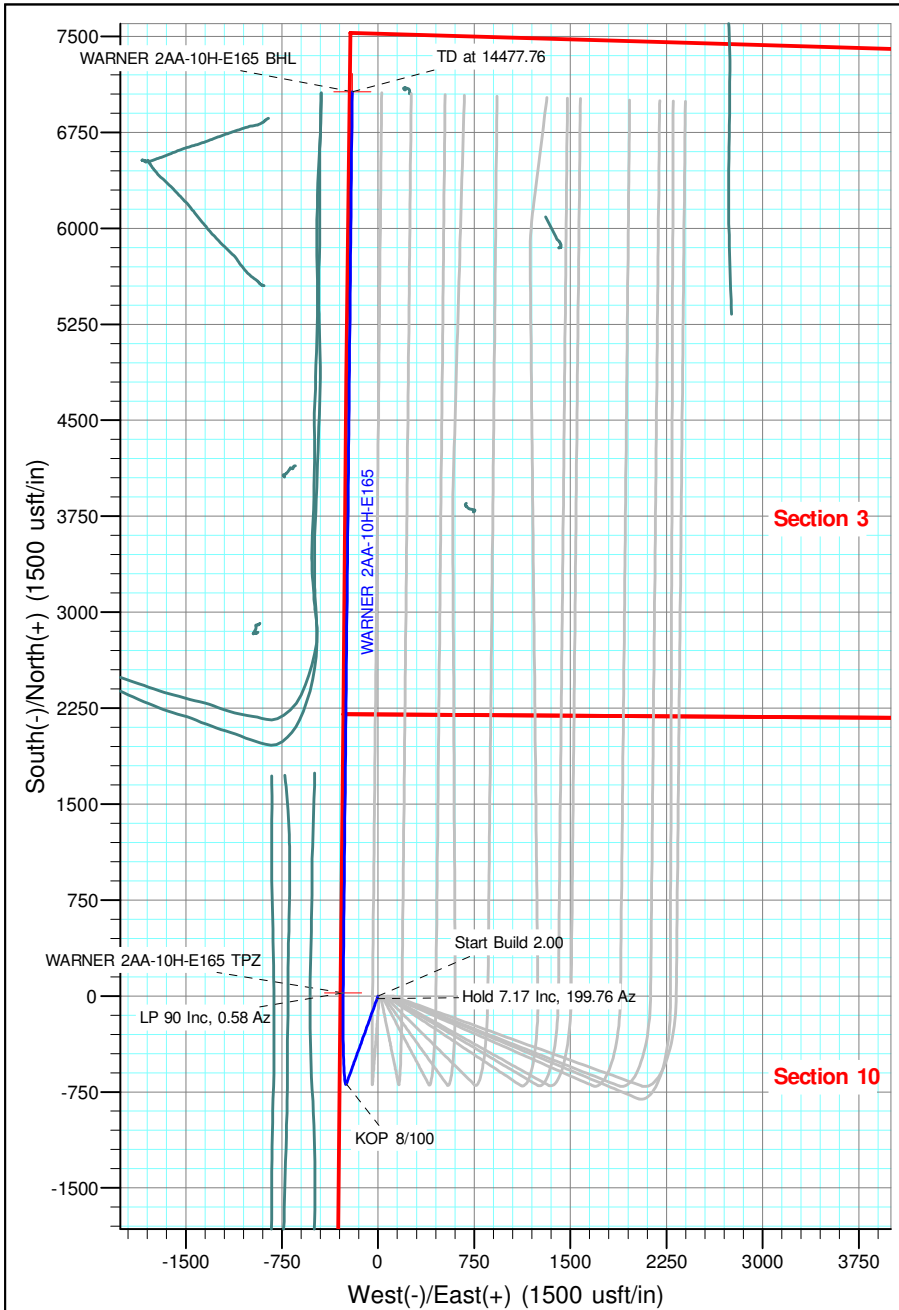


Geodetic Datum:

North American Datum 1983
US State Plane 1983, Colorado Northern Zone

Elevation:

Ground Elevation: 4970.00
KB Elevation: WELL @ 4993.00usft (Original Well Elev)





Crestone Peak Resources

Sec 10 T1N-R65W

Warner Pad

WARNER 2AA-10H-E165

Wellbore #1

Plan: Plan #3 27Sep18 kjs

Standard Planning Report - Geographic

28 September, 2018

Database:	EDM 5000.15 Single User Db	Local Co-ordinate Reference:	Well WARNER 2AA-10H-E165
Company:	Crestone Peak Resources	TVD Reference:	WELL @ 4993.00usft (Original Well Elev)
Project:	Sec 10 T1N-R65W	MD Reference:	WELL @ 4993.00usft (Original Well Elev)
Site:	Warner Pad	North Reference:	True
Well:	WARNER 2AA-10H-E165	Survey Calculation Method:	Minimum Curvature
Wellbore:	Wellbore #1		
Design:	Plan #3 27Sep18 kjs		

Project	Sec 10 T1N-R65W, Wattenberg Field		
Map System:	US State Plane 1983	System Datum:	Mean Sea Level
Geo Datum:	North American Datum 1983		
Map Zone:	Colorado Northern Zone		

Site	Warner Pad				
Site Position:		Northing:	1,268,463.012 usft	Latitude:	40.067253
From:	Lat/Long	Easting:	3,235,523.582 usft	Longitude:	-104.658463
Position Uncertainty:	0.00 usft	Slot Radius:	13-3/16 "	Grid Convergence:	0.54 °

Well	WARNER 2AA-10H-E165					
Well Position	+N/-S	0.00 usft	Northing:	1,268,463.008 usft	Latitude:	40.067253
	+E/-W	0.00 usft	Easting:	3,235,523.582 usft	Longitude:	-104.658463
Position Uncertainty		0.00 usft	Wellhead Elevation:		Ground Level:	4,970.00 usft

Wellbore	Wellbore #1				
Magnetics	Model Name	Sample Date	Declination (°)	Dip Angle (°)	Field Strength (nT)
	IGRF2015	9/4/2018	8.00	66.57	52,090.48102018

Design	Plan #3 27Sep18 kjs			
Audit Notes:				
Version:	Phase:	PLAN	Tie On Depth:	0.00
Vertical Section:	Depth From (TVD) (usft)	+N/-S (usft)	+E/-W (usft)	Direction (°)
	0.00	0.00	0.00	358.37

Plan Survey Tool Program	Date	9/28/2018		
Depth From (usft)	Depth To (usft)	Survey (Wellbore)	Tool Name	Remarks
1	0.00	14,477.75 Plan #3 27Sep18 kjs (Wellbore #	MWD	
			OWSG MWD - Standard	

Plan Sections										
Measured Depth (usft)	Inclination (°)	Azimuth (°)	Vertical Depth (usft)	+N/-S (usft)	+E/-W (usft)	Dogleg Rate (°/100usft)	Build Rate (°/100usft)	Turn Rate (°/100usft)	TFO (°)	Target
0.00	0.00	0.00	0.00	0.00	0.00	0.00	0.00	0.00	0.00	
200.00	0.00	0.00	200.00	0.00	0.00	0.00	0.00	0.00	0.00	
558.62	7.17	199.76	557.68	-21.10	-7.58	2.00	2.00	0.00	199.76	
6,225.31	7.17	199.76	6,180.03	-686.96	-246.73	0.00	0.00	0.00	0.00	
7,434.96	90.00	0.58	6,980.00	24.54	-272.60	8.00	6.85	13.29	160.68	WARNER 2AA-10H-E
14,477.76	90.00	0.58	6,980.00	7,066.98	-201.45	0.00	0.00	0.00	0.00	WARNER 2AA-10H-E

Database:	EDM 5000.15 Single User Db	Local Co-ordinate Reference:	Well WARNER 2AA-10H-E165
Company:	Crestone Peak Resources	TVD Reference:	WELL @ 4993.00usft (Original Well Elev)
Project:	Sec 10 T1N-R65W	MD Reference:	WELL @ 4993.00usft (Original Well Elev)
Site:	Warner Pad	North Reference:	True
Well:	WARNER 2AA-10H-E165	Survey Calculation Method:	Minimum Curvature
Wellbore:	Wellbore #1		
Design:	Plan #3 27Sep18 kjs		

Planned Survey									
Measured Depth (usft)	Inclination (°)	Azimuth (°)	Vertical Depth (usft)	+N/-S (usft)	+E/-W (usft)	Map Northing (usft)	Map Easting (usft)	Latitude	Longitude
0.00	0.00	0.00	0.00	0.00	0.00	1,268,463.008	3,235,523.582	40.067253	-104.658463
100.00	0.00	0.00	100.00	0.00	0.00	1,268,463.008	3,235,523.582	40.067253	-104.658463
200.00	0.00	0.00	200.00	0.00	0.00	1,268,463.008	3,235,523.582	40.067253	-104.658463
Start Build 2.00									
300.00	2.00	199.76	299.98	-1.64	-0.59	1,268,461.360	3,235,523.008	40.067249	-104.658465
400.00	4.00	199.76	399.84	-6.57	-2.36	1,268,456.418	3,235,521.286	40.067235	-104.658472
500.00	6.00	199.76	499.45	-14.77	-5.30	1,268,448.188	3,235,518.418	40.067213	-104.658482
558.62	7.17	199.76	557.68	-21.10	-7.58	1,268,441.840	3,235,516.206	40.067195	-104.658490
Hold 7.17 Inc, 199.76 Az									
600.00	7.17	199.76	598.74	-25.96	-9.32	1,268,436.960	3,235,514.505	40.067182	-104.658497
700.00	7.17	199.76	697.96	-37.71	-13.54	1,268,425.170	3,235,510.397	40.067150	-104.658512
800.00	7.17	199.76	797.18	-49.46	-17.76	1,268,413.381	3,235,506.288	40.067117	-104.658527
900.00	7.17	199.76	896.39	-61.21	-21.99	1,268,401.591	3,235,502.179	40.067085	-104.658542
1,000.00	7.17	199.76	995.61	-72.96	-26.21	1,268,389.801	3,235,498.071	40.067053	-104.658557
1,100.00	7.17	199.76	1,094.83	-84.71	-30.43	1,268,378.011	3,235,493.962	40.067021	-104.658572
1,200.00	7.17	199.76	1,194.05	-96.46	-34.65	1,268,366.221	3,235,489.853	40.066988	-104.658587
1,300.00	7.17	199.76	1,293.26	-108.21	-38.87	1,268,354.431	3,235,485.744	40.066956	-104.658602
1,400.00	7.17	199.76	1,392.48	-119.96	-43.09	1,268,342.641	3,235,481.636	40.066924	-104.658617
1,500.00	7.17	199.76	1,491.70	-131.71	-47.31	1,268,330.851	3,235,477.527	40.066892	-104.658632
1,600.00	7.17	199.76	1,590.92	-143.46	-51.53	1,268,319.061	3,235,473.418	40.066859	-104.658647
1,700.00	7.17	199.76	1,690.13	-155.21	-55.75	1,268,307.271	3,235,469.310	40.066827	-104.658662
1,800.00	7.17	199.76	1,789.35	-166.97	-59.97	1,268,295.481	3,235,465.201	40.066795	-104.658678
1,900.00	7.17	199.76	1,888.57	-178.72	-64.19	1,268,283.691	3,235,461.092	40.066762	-104.658693
2,000.00	7.17	199.76	1,987.79	-190.47	-68.41	1,268,271.901	3,235,456.984	40.066730	-104.658708
2,100.00	7.17	199.76	2,087.00	-202.22	-72.63	1,268,260.111	3,235,452.875	40.066698	-104.658723
2,200.00	7.17	199.76	2,186.22	-213.97	-76.85	1,268,248.321	3,235,448.766	40.066666	-104.658738
2,300.00	7.17	199.76	2,285.44	-225.72	-81.07	1,268,236.531	3,235,444.658	40.066633	-104.658753
2,400.00	7.17	199.76	2,384.66	-237.47	-85.29	1,268,224.741	3,235,440.549	40.066601	-104.658768
2,500.00	7.17	199.76	2,483.87	-249.22	-89.51	1,268,212.951	3,235,436.440	40.066569	-104.658783
2,600.00	7.17	199.76	2,583.09	-260.97	-93.73	1,268,201.161	3,235,432.331	40.066537	-104.658798
2,700.00	7.17	199.76	2,682.31	-272.72	-97.95	1,268,189.371	3,235,428.223	40.066504	-104.658813
2,800.00	7.17	199.76	2,781.53	-284.47	-102.17	1,268,177.581	3,235,424.114	40.066472	-104.658828
2,900.00	7.17	199.76	2,880.74	-296.22	-106.39	1,268,165.791	3,235,420.005	40.066440	-104.658843
3,000.00	7.17	199.76	2,979.96	-307.97	-110.61	1,268,154.001	3,235,415.897	40.066408	-104.658858
3,100.00	7.17	199.76	3,079.18	-319.72	-114.83	1,268,142.211	3,235,411.788	40.066375	-104.658874
3,200.00	7.17	199.76	3,178.40	-331.47	-119.05	1,268,130.421	3,235,407.679	40.066343	-104.658889
3,300.00	7.17	199.76	3,277.61	-343.22	-123.27	1,268,118.631	3,235,403.571	40.066311	-104.658904
3,400.00	7.17	199.76	3,376.83	-354.97	-127.50	1,268,106.841	3,235,399.462	40.066279	-104.658919
3,500.00	7.17	199.76	3,476.05	-366.72	-131.72	1,268,095.052	3,235,395.353	40.066246	-104.658934
3,600.00	7.17	199.76	3,575.27	-378.47	-135.94	1,268,083.262	3,235,391.244	40.066214	-104.658949
3,700.00	7.17	199.76	3,674.48	-390.22	-140.16	1,268,071.472	3,235,387.136	40.066182	-104.658964
3,800.00	7.17	199.76	3,773.70	-401.97	-144.38	1,268,059.682	3,235,383.027	40.066150	-104.658979
3,900.00	7.17	199.76	3,872.92	-413.72	-148.60	1,268,047.892	3,235,378.918	40.066117	-104.658994
4,000.00	7.17	199.76	3,972.14	-425.47	-152.82	1,268,036.102	3,235,374.810	40.066085	-104.659009
4,100.00	7.17	199.76	4,071.35	-437.23	-157.04	1,268,024.312	3,235,370.701	40.066053	-104.659024
4,200.00	7.17	199.76	4,170.57	-448.98	-161.26	1,268,012.522	3,235,366.592	40.066021	-104.659039
4,300.00	7.17	199.76	4,269.79	-460.73	-165.48	1,268,000.732	3,235,362.484	40.065988	-104.659055
4,400.00	7.17	199.76	4,369.01	-472.48	-169.70	1,267,988.942	3,235,358.375	40.065956	-104.659070
4,500.00	7.17	199.76	4,468.22	-484.23	-173.92	1,267,977.152	3,235,354.266	40.065924	-104.659085
4,600.00	7.17	199.76	4,567.44	-495.98	-178.14	1,267,965.362	3,235,350.158	40.065892	-104.659100
4,700.00	7.17	199.76	4,666.66	-507.73	-182.36	1,267,953.572	3,235,346.049	40.065859	-104.659115
4,800.00	7.17	199.76	4,765.88	-519.48	-186.58	1,267,941.782	3,235,341.940	40.065827	-104.659130
4,900.00	7.17	199.76	4,865.09	-531.23	-190.80	1,267,929.992	3,235,337.831	40.065795	-104.659145
5,000.00	7.17	199.76	4,964.31	-542.98	-195.02	1,267,918.202	3,235,333.723	40.065763	-104.659160

Database:	EDM 5000.15 Single User Db	Local Co-ordinate Reference:	Well WARNER 2AA-10H-E165
Company:	Crestone Peak Resources	TVD Reference:	WELL @ 4993.00usft (Original Well Elev)
Project:	Sec 10 T1N-R65W	MD Reference:	WELL @ 4993.00usft (Original Well Elev)
Site:	Warner Pad	North Reference:	True
Well:	WARNER 2AA-10H-E165	Survey Calculation Method:	Minimum Curvature
Wellbore:	Wellbore #1		
Design:	Plan #3 27Sep18 kjs		

Planned Survey									
Measured Depth (usft)	Inclination (°)	Azimuth (°)	Vertical Depth (usft)	+N/-S (usft)	+E/-W (usft)	Map Northing (usft)	Map Easting (usft)	Latitude	Longitude
5,100.00	7.17	199.76	5,063.53	-554.73	-199.24	1,267,906.412	3,235,329.614	40.065730	-104.659175
5,200.00	7.17	199.76	5,162.75	-566.48	-203.46	1,267,894.622	3,235,325.505	40.065698	-104.659190
5,300.00	7.17	199.76	5,261.96	-578.23	-207.68	1,267,882.832	3,235,321.397	40.065666	-104.659205
5,400.00	7.17	199.76	5,361.18	-589.98	-211.90	1,267,871.042	3,235,317.288	40.065633	-104.659220
5,500.00	7.17	199.76	5,460.40	-601.73	-216.12	1,267,859.252	3,235,313.179	40.065601	-104.659235
5,600.00	7.17	199.76	5,559.62	-613.48	-220.34	1,267,847.462	3,235,309.071	40.065569	-104.659251
5,700.00	7.17	199.76	5,658.83	-625.23	-224.56	1,267,835.672	3,235,304.962	40.065537	-104.659266
5,800.00	7.17	199.76	5,758.05	-636.98	-228.78	1,267,823.882	3,235,300.853	40.065504	-104.659281
5,900.00	7.17	199.76	5,857.27	-648.73	-233.00	1,267,812.092	3,235,296.745	40.065472	-104.659296
6,000.00	7.17	199.76	5,956.49	-660.48	-237.23	1,267,800.302	3,235,292.636	40.065440	-104.659311
6,100.00	7.17	199.76	6,055.70	-672.23	-241.45	1,267,788.512	3,235,288.527	40.065408	-104.659326
6,200.00	7.17	199.76	6,154.92	-683.98	-245.67	1,267,776.723	3,235,284.418	40.065375	-104.659341
6,225.31	7.17	199.76	6,180.03	-686.96	-246.73	1,267,773.739	3,235,283.379	40.065367	-104.659345
KOP 8/100									
6,300.00	2.50	251.97	6,254.46	-691.85	-249.86	1,267,768.813	3,235,280.299	40.065354	-104.659356
6,400.00	7.58	342.48	6,354.14	-686.23	-253.92	1,267,774.399	3,235,276.182	40.065369	-104.659371
6,500.00	15.38	351.94	6,452.07	-666.78	-257.78	1,267,793.814	3,235,272.146	40.065423	-104.659384
6,600.00	23.32	355.08	6,546.35	-633.87	-261.34	1,267,826.682	3,235,268.270	40.065513	-104.659397
6,700.00	31.28	356.68	6,635.14	-588.16	-264.55	1,267,872.362	3,235,264.629	40.065638	-104.659408
6,800.00	39.26	357.68	6,716.72	-530.53	-267.34	1,267,929.965	3,235,261.293	40.065797	-104.659418
6,900.00	47.25	358.39	6,789.49	-462.10	-269.65	1,267,998.370	3,235,258.328	40.065985	-104.659427
7,000.00	55.24	358.94	6,852.04	-384.20	-271.45	1,268,076.246	3,235,255.792	40.066198	-104.659433
7,100.00	63.23	359.39	6,903.15	-298.36	-272.69	1,268,162.076	3,235,253.734	40.066434	-104.659438
7,200.00	71.22	359.77	6,941.84	-206.23	-273.36	1,268,254.191	3,235,252.193	40.066687	-104.659440
7,300.00	79.21	0.13	6,967.33	-109.62	-273.44	1,268,350.797	3,235,251.200	40.066952	-104.659440
7,400.00	87.21	0.46	6,979.15	-10.40	-272.92	1,268,450.014	3,235,250.774	40.067225	-104.659438
7,434.96	90.00	0.58	6,980.00	24.54	-272.60	1,268,484.960	3,235,250.761	40.067320	-104.659437
LP 90 Inc, 0.58 Az - WARNER 2AA-10H-E165 TPZ									
7,500.00	90.00	0.58	6,980.00	89.58	-271.94	1,268,550.000	3,235,250.802	40.067499	-104.659435
7,600.00	90.00	0.58	6,980.00	189.57	-270.93	1,268,650.000	3,235,250.866	40.067773	-104.659431
7,700.00	90.00	0.58	6,980.00	289.57	-269.92	1,268,750.000	3,235,250.929	40.068048	-104.659428
7,800.00	90.00	0.58	6,980.00	389.56	-268.91	1,268,850.000	3,235,250.992	40.068322	-104.659424
7,900.00	90.00	0.58	6,980.00	489.56	-267.89	1,268,950.000	3,235,251.056	40.068597	-104.659420
8,000.00	90.00	0.58	6,980.00	589.55	-266.88	1,269,050.000	3,235,251.119	40.068871	-104.659417
8,100.00	90.00	0.58	6,980.00	689.55	-265.87	1,269,150.000	3,235,251.182	40.069146	-104.659413
8,200.00	90.00	0.58	6,980.00	789.54	-264.86	1,269,250.000	3,235,251.245	40.069420	-104.659410
8,300.00	90.00	0.58	6,980.00	889.54	-263.84	1,269,350.000	3,235,251.309	40.069695	-104.659406
8,400.00	90.00	0.58	6,980.00	989.53	-262.83	1,269,450.000	3,235,251.372	40.069970	-104.659402
8,500.00	90.00	0.58	6,980.00	1,089.53	-261.82	1,269,550.000	3,235,251.435	40.070244	-104.659399
8,600.00	90.00	0.58	6,980.00	1,189.52	-260.81	1,269,650.000	3,235,251.499	40.070519	-104.659395
8,700.00	90.00	0.58	6,980.00	1,289.52	-259.79	1,269,750.000	3,235,251.562	40.070793	-104.659392
8,800.00	90.00	0.58	6,980.00	1,389.51	-258.78	1,269,850.000	3,235,251.625	40.071068	-104.659388
8,900.00	90.00	0.58	6,980.00	1,489.51	-257.77	1,269,950.000	3,235,251.688	40.071342	-104.659384
9,000.00	90.00	0.58	6,980.00	1,589.50	-256.76	1,270,050.000	3,235,251.752	40.071617	-104.659381
9,100.00	90.00	0.58	6,980.00	1,689.50	-255.75	1,270,150.000	3,235,251.815	40.071891	-104.659377
9,200.00	90.00	0.58	6,980.00	1,789.49	-254.73	1,270,249.999	3,235,251.878	40.072166	-104.659373
9,300.00	90.00	0.58	6,980.00	1,889.48	-253.72	1,270,349.999	3,235,251.941	40.072440	-104.659370
9,400.00	90.00	0.58	6,980.00	1,989.48	-252.71	1,270,449.999	3,235,252.005	40.072715	-104.659366
9,500.00	90.00	0.58	6,980.00	2,089.47	-251.70	1,270,549.999	3,235,252.068	40.072989	-104.659363
9,600.00	90.00	0.58	6,980.00	2,189.47	-250.68	1,270,649.999	3,235,252.131	40.073264	-104.659359
9,700.00	90.00	0.58	6,980.00	2,289.46	-249.67	1,270,749.999	3,235,252.195	40.073538	-104.659355
9,800.00	90.00	0.58	6,980.00	2,389.46	-248.66	1,270,849.999	3,235,252.258	40.073813	-104.659352
9,900.00	90.00	0.58	6,980.00	2,489.45	-247.65	1,270,949.999	3,235,252.321	40.074087	-104.659348
10,000.00	90.00	0.58	6,980.00	2,589.45	-246.64	1,271,049.999	3,235,252.384	40.074362	-104.659345

Database:	EDM 5000.15 Single User Db	Local Co-ordinate Reference:	Well WARNER 2AA-10H-E165
Company:	Crestone Peak Resources	TVD Reference:	WELL @ 4993.00usft (Original Well Elev)
Project:	Sec 10 T1N-R65W	MD Reference:	WELL @ 4993.00usft (Original Well Elev)
Site:	Warner Pad	North Reference:	True
Well:	WARNER 2AA-10H-E165	Survey Calculation Method:	Minimum Curvature
Wellbore:	Wellbore #1		
Design:	Plan #3 27Sep18 kjs		

Planned Survey									
Measured Depth (usft)	Inclination (°)	Azimuth (°)	Vertical Depth (usft)	+N/-S (usft)	+E/-W (usft)	Map Northing (usft)	Map Easting (usft)	Latitude	Longitude
10,100.00	90.00	0.58	6,980.00	2,689.44	-245.62	1,271,149.999	3,235,252.448	40.074636	-104.659341
10,200.00	90.00	0.58	6,980.00	2,789.44	-244.61	1,271,249.999	3,235,252.511	40.074911	-104.659337
10,300.00	90.00	0.58	6,980.00	2,889.43	-243.60	1,271,349.999	3,235,252.574	40.075185	-104.659334
10,400.00	90.00	0.58	6,980.00	2,989.43	-242.59	1,271,449.999	3,235,252.638	40.075460	-104.659330
10,500.00	90.00	0.58	6,980.00	3,089.42	-241.57	1,271,549.999	3,235,252.701	40.075734	-104.659327
10,600.00	90.00	0.58	6,980.00	3,189.42	-240.56	1,271,649.999	3,235,252.764	40.076009	-104.659323
10,700.00	90.00	0.58	6,980.00	3,289.41	-239.55	1,271,749.999	3,235,252.827	40.076283	-104.659319
10,800.00	90.00	0.58	6,980.00	3,389.41	-238.54	1,271,849.999	3,235,252.891	40.076558	-104.659316
10,900.00	90.00	0.58	6,980.00	3,489.40	-237.52	1,271,949.999	3,235,252.954	40.076832	-104.659312
11,000.00	90.00	0.58	6,980.00	3,589.40	-236.51	1,272,049.999	3,235,253.017	40.077107	-104.659308
11,100.00	90.00	0.58	6,980.00	3,689.39	-235.50	1,272,149.999	3,235,253.080	40.077381	-104.659305
11,200.00	90.00	0.58	6,980.00	3,789.39	-234.49	1,272,249.999	3,235,253.144	40.077656	-104.659301
11,300.00	90.00	0.58	6,980.00	3,889.38	-233.48	1,272,349.999	3,235,253.207	40.077930	-104.659298
11,400.00	90.00	0.58	6,980.00	3,989.38	-232.46	1,272,449.999	3,235,253.270	40.078205	-104.659294
11,500.00	90.00	0.58	6,980.00	4,089.37	-231.45	1,272,549.999	3,235,253.334	40.078479	-104.659290
11,600.00	90.00	0.58	6,980.00	4,189.37	-230.44	1,272,649.999	3,235,253.397	40.078754	-104.659287
11,700.00	90.00	0.58	6,980.00	4,289.36	-229.43	1,272,749.999	3,235,253.460	40.079028	-104.659283
11,800.00	90.00	0.58	6,980.00	4,389.36	-228.41	1,272,849.999	3,235,253.523	40.079303	-104.659280
11,900.00	90.00	0.58	6,980.00	4,489.35	-227.40	1,272,949.999	3,235,253.587	40.079577	-104.659276
12,000.00	90.00	0.58	6,980.00	4,589.35	-226.39	1,273,049.999	3,235,253.650	40.079852	-104.659272
12,100.00	90.00	0.58	6,980.00	4,689.34	-225.38	1,273,149.999	3,235,253.713	40.080126	-104.659269
12,200.00	90.00	0.58	6,980.00	4,789.34	-224.37	1,273,249.999	3,235,253.776	40.080401	-104.659265
12,300.00	90.00	0.58	6,980.00	4,889.33	-223.35	1,273,349.999	3,235,253.840	40.080675	-104.659261
12,400.00	90.00	0.58	6,980.00	4,989.33	-222.34	1,273,449.999	3,235,253.903	40.080950	-104.659258
12,500.00	90.00	0.58	6,980.00	5,089.32	-221.33	1,273,549.999	3,235,253.966	40.081224	-104.659254
12,600.00	90.00	0.58	6,980.00	5,189.32	-220.32	1,273,649.999	3,235,254.030	40.081499	-104.659251
12,700.00	90.00	0.58	6,980.00	5,289.31	-219.30	1,273,749.999	3,235,254.093	40.081773	-104.659247
12,800.00	90.00	0.58	6,980.00	5,389.31	-218.29	1,273,850.000	3,235,254.156	40.082048	-104.659243
12,900.00	90.00	0.58	6,980.00	5,489.30	-217.28	1,273,950.000	3,235,254.219	40.082322	-104.659240
13,000.00	90.00	0.58	6,980.00	5,589.30	-216.27	1,274,050.000	3,235,254.283	40.082597	-104.659236
13,100.00	90.00	0.58	6,980.00	5,689.29	-215.25	1,274,150.000	3,235,254.346	40.082871	-104.659233
13,200.00	90.00	0.58	6,980.00	5,789.29	-214.24	1,274,250.000	3,235,254.409	40.083146	-104.659229
13,300.00	90.00	0.58	6,980.00	5,889.28	-213.23	1,274,349.999	3,235,254.473	40.083420	-104.659225
13,400.00	90.00	0.58	6,980.00	5,989.27	-212.22	1,274,449.999	3,235,254.536	40.083695	-104.659222
13,500.00	90.00	0.58	6,980.00	6,089.27	-211.21	1,274,549.999	3,235,254.599	40.083969	-104.659218
13,600.00	90.00	0.58	6,980.00	6,189.26	-210.19	1,274,649.999	3,235,254.662	40.084244	-104.659214
13,700.00	90.00	0.58	6,980.00	6,289.26	-209.18	1,274,749.999	3,235,254.726	40.084518	-104.659211
13,800.00	90.00	0.58	6,980.00	6,389.25	-208.17	1,274,849.999	3,235,254.789	40.084793	-104.659207
13,900.00	90.00	0.58	6,980.00	6,489.25	-207.16	1,274,949.999	3,235,254.852	40.085067	-104.659204
14,000.00	90.00	0.58	6,980.00	6,589.24	-206.14	1,275,049.999	3,235,254.915	40.085342	-104.659200
14,100.00	90.00	0.58	6,980.00	6,689.24	-205.13	1,275,149.999	3,235,254.979	40.085616	-104.659196
14,200.00	90.00	0.58	6,980.00	6,789.23	-204.12	1,275,249.999	3,235,255.042	40.085891	-104.659193
14,300.00	90.00	0.58	6,980.00	6,889.23	-203.11	1,275,349.999	3,235,255.105	40.086165	-104.659189
14,400.00	90.00	0.58	6,980.00	6,989.22	-202.10	1,275,449.999	3,235,255.169	40.086440	-104.659186
14,477.76	90.00	0.58	6,980.00	7,066.98	-201.45	1,275,527.756	3,235,255.072	40.086653	-104.659183
TD at 14477.76 - WARNER 2AA-10H-E165 BHL									

Database:	EDM 5000.15 Single User Db	Local Co-ordinate Reference:	Well WARNER 2AA-10H-E165
Company:	Crestone Peak Resources	TVD Reference:	WELL @ 4993.00usft (Original Well Elev)
Project:	Sec 10 T1N-R65W	MD Reference:	WELL @ 4993.00usft (Original Well Elev)
Site:	Warner Pad	North Reference:	True
Well:	WARNER 2AA-10H-E165	Survey Calculation Method:	Minimum Curvature
Wellbore:	Wellbore #1		
Design:	Plan #3 27Sep18 kjs		

Design Targets									
Target Name									
- hit/miss target	Dip Angle	Dip Dir.	TVD	+N/-S	+E/-W	Northing	Easting	Latitude	Longitude
- Shape	(°)	(°)	(usft)	(usft)	(usft)	(usft)	(usft)		
WARNER 2AA-10H-E16	0.00	0.00	6,980.00	7,066.98	-201.45	1,275,527.756	3,235,255.072	40.086653	-104.659183
- plan hits target center									
- Point									
WARNER 2AA-10H-E16	0.00	0.00	6,980.00	24.54	-272.60	1,268,484.960	3,235,250.761	40.067320	-104.659437
- plan hits target center									
- Point									

Plan Annotations				
Measured Depth	Vertical Depth	Local Coordinates		Comment
(usft)	(usft)	+N/-S (usft)	+E/-W (usft)	
200.00	200.00	0.00	0.00	Start Build 2.00
558.62	557.68	-21.10	-7.58	Hold 7.17 Inc, 199.76 Az
6,225.31	6,180.03	-686.96	-246.73	KOP 8/100
7,434.96	6,980.00	24.54	-272.60	LP 90 Inc, 0.58 Az
14,477.76	6,980.00	7,066.98	-201.45	TD at 14477.76