



# Crestone Peak Resources

Well Name:

**WARNER 2B-10H-E165**

Project Name:

**Sec 10 T1N-R65W**

Pad Name:

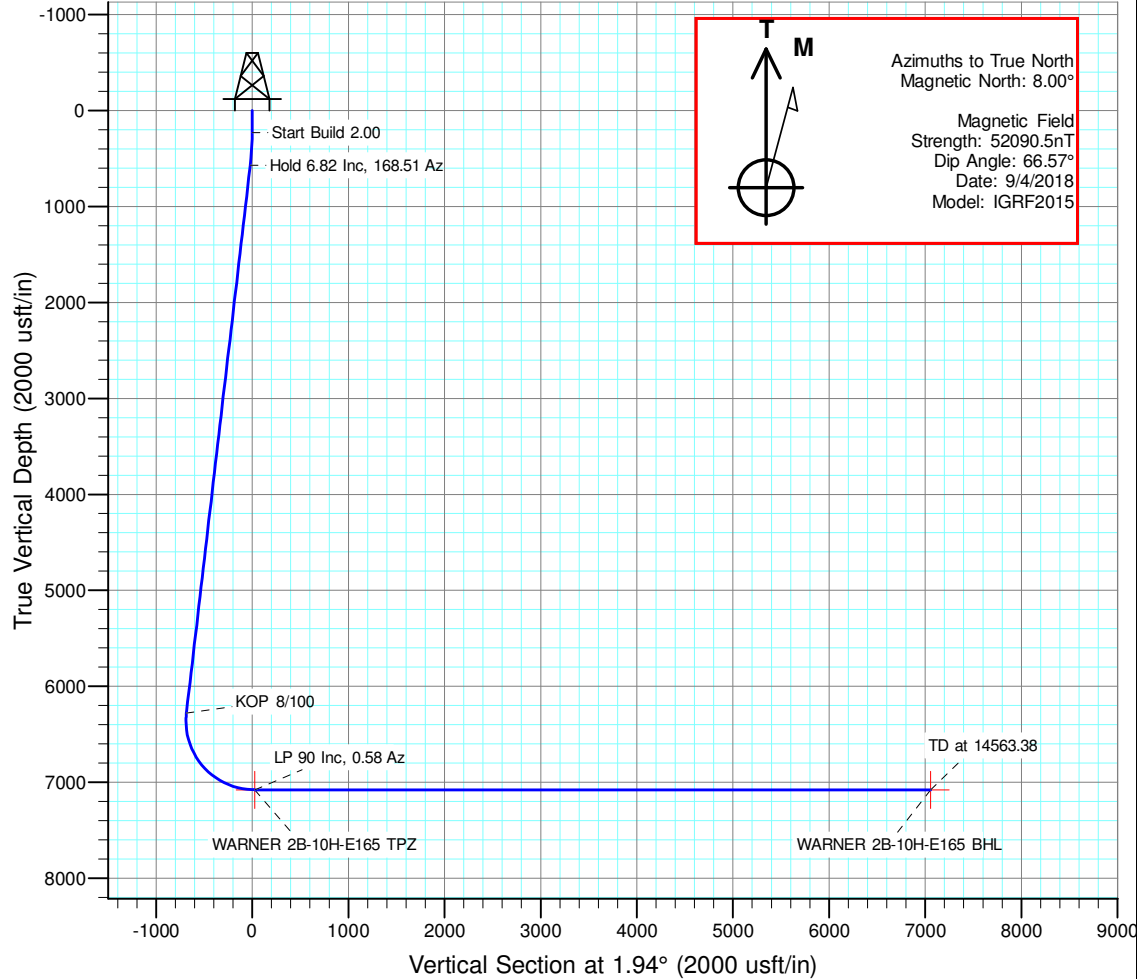
**Warner Pad**

## ANNOTATIONS

MD	Inc	Azi	TVD	+N/-S	+E/-W	Vsect	Departure	Annotation
230.00	0.00	0.00	230.00	0.00	0.00	0.00	0.00	Start Build 2.00
571.17	6.82	168.51	570.36	-19.88	4.04	-19.74	20.29	Hold 6.82 Inc, 168.51 Az
6322.39	6.82	168.51	6280.84	-689.48	140.17	-684.34	703.58	KOP 8/100
7530.78	90.00	0.58	7080.00	21.63	167.37	27.28	1426.78	LP 90 Inc, 0.58 Az
14563.38	90.00	0.58	7080.00	7053.87	238.67	7057.90	8459.38	TD at 14563.38

## DESIGN TARGET DETAILS

Name	TVD	+N/-S	+E/-W	Northing	Easting	Latitude	Longitude	Shape
WARNER 2B-10H-E165 BHL	7080.00	7053.87	238.67	1275518.643	3235715.166	40.086616	-104.657539	Point
WARNER 2B-10H-E165 TPZ	7080.00	21.63	167.37	1268486.045	3235710.610	40.067311	-104.657794	Point

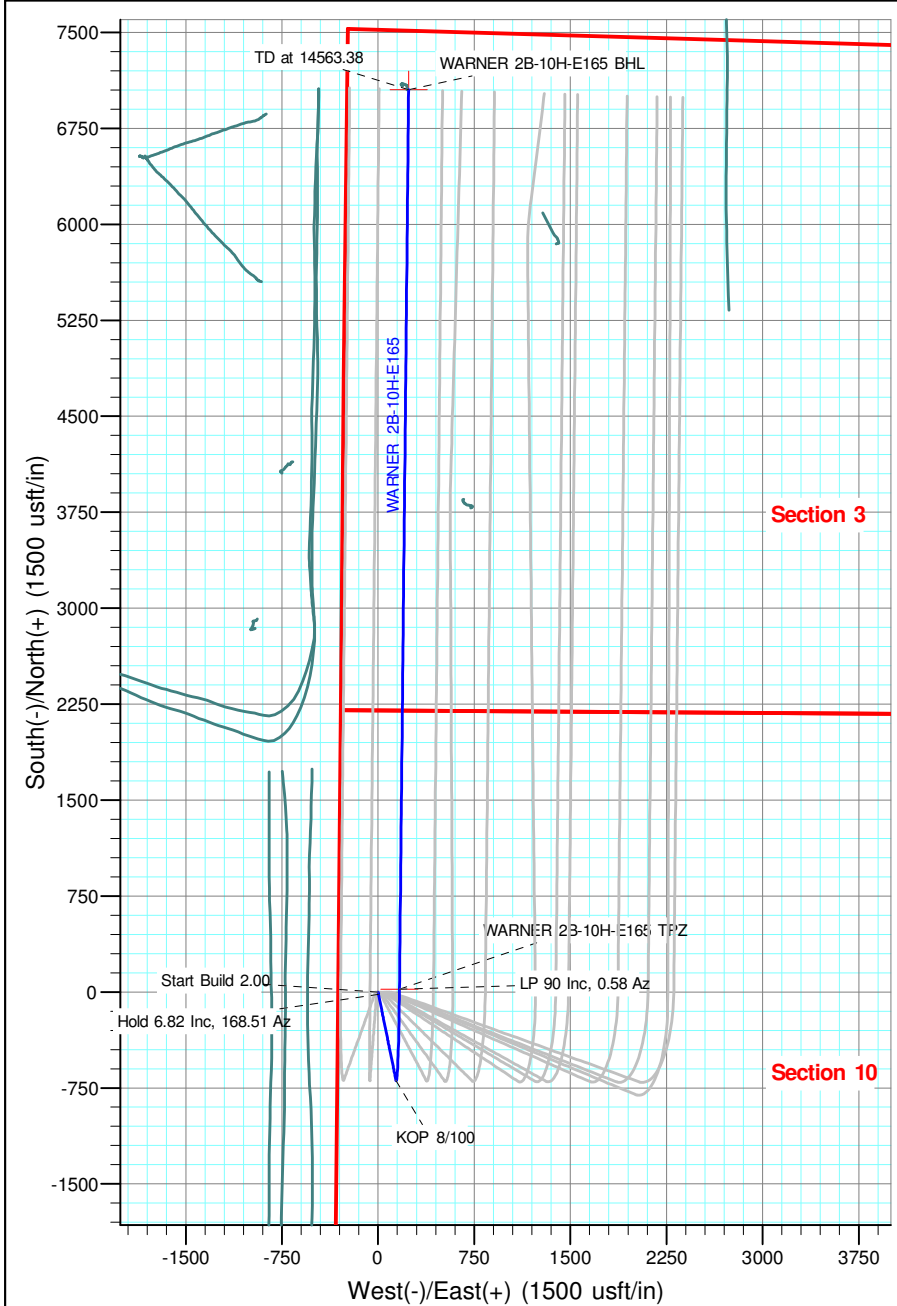


## Geodetic Datum:

North American Datum 1983  
US State Plane 1983, Colorado Northern Zone

## Elevation:

Ground Elevation: 4970.00  
KB Elevation: WELL @ 4993.00usft (Original Well Elev)





# **Crestone Peak Resources**

**Sec 10 T1N-R65W**

**Warner Pad**

**WARNER 2B-10H-E165**

**Wellbore #1**

**Plan: Plan #3 27Sep18 kjs**

## **Standard Planning Report - Geographic**

**28 September, 2018**

<b>Database:</b>	EDM 5000.15 Single User Db	<b>Local Co-ordinate Reference:</b>	Well WARNER 2B-10H-E165
<b>Company:</b>	Crestone Peak Resources	<b>TVD Reference:</b>	WELL @ 4993.00usft (Original Well Elev)
<b>Project:</b>	Sec 10 T1N-R65W	<b>MD Reference:</b>	WELL @ 4993.00usft (Original Well Elev)
<b>Site:</b>	Warner Pad	<b>North Reference:</b>	True
<b>Well:</b>	WARNER 2B-10H-E165	<b>Survey Calculation Method:</b>	Minimum Curvature
<b>Wellbore:</b>	Wellbore #1		
<b>Design:</b>	Plan #3 27Sep18 kjs		

<b>Project</b>	Sec 10 T1N-R65W, Wattenberg Field		
<b>Map System:</b>	US State Plane 1983	<b>System Datum:</b>	Mean Sea Level
<b>Geo Datum:</b>	North American Datum 1983		
<b>Map Zone:</b>	Colorado Northern Zone		

Site	Warner Pad				
Site Position:		Northing:	1,268,463.012 usft	Latitude:	40.067253
From:	Lat/Long	Easting:	3,235,523.582 usft	Longitude:	-104.658463
Position Uncertainty:	0.00 usft	Slot Radius:	13-3/16 "	Grid Convergence:	0.54 °

Well	WARNER 2B-10H-E165					
Well Position	+N/-S	0.00 usft	Northing:	1,268,462.828 usft	Latitude:	40.067252
	+E/-W	0.00 usft	Easting:	3,235,543.456 usft	Longitude:	-104.658392
Position Uncertainty		0.00 usft	Wellhead Elevation:		Ground Level:	4,970.00 usft

<b>Wellbore</b>	Wellbore #1				
<b>Magnetics</b>	<b>Model Name</b>	<b>Sample Date</b>	<b>Declination (°)</b>	<b>Dip Angle (°)</b>	<b>Field Strength (nT)</b>
	IGRF2015	9/4/2018	8.00	66.57	52,090.48792100

<b>Design</b>	Plan #3 27Sep18 kjs			
<b>Audit Notes:</b>				
<b>Version:</b>	<b>Phase:</b>	PLAN	<b>Tie On Depth:</b>	0.00
<b>Vertical Section:</b>	<b>Depth From (TVD) (usft)</b>	<b>+N/-S (usft)</b>	<b>+E/-W (usft)</b>	<b>Direction (°)</b>
	0.00	0.00	0.00	1.94

<b>Plan Survey Tool Program</b>	<b>Date</b>	9/28/2018		
<b>Depth From (usft)</b>	<b>Depth To (usft)</b>	<b>Survey (Wellbore)</b>	<b>Tool Name</b>	<b>Remarks</b>
1	0.00	14,563.38 Plan #3 27Sep18 kjs (Wellbore #	MWD	
			OWSG MWD - Standard	

<b>Plan Sections</b>										
<b>Measured Depth (usft)</b>	<b>Inclination (°)</b>	<b>Azimuth (°)</b>	<b>Vertical Depth (usft)</b>	<b>+N/-S (usft)</b>	<b>+E/-W (usft)</b>	<b>Dogleg Rate (°/100usft)</b>	<b>Build Rate (°/100usft)</b>	<b>Turn Rate (°/100usft)</b>	<b>TFO (°)</b>	<b>Target</b>
0.00	0.00	0.00	0.00	0.00	0.00	0.00	0.00	0.00	0.00	
230.00	0.00	0.00	230.00	0.00	0.00	0.00	0.00	0.00	0.00	
571.17	6.82	168.51	570.36	-19.88	4.04	2.00	2.00	0.00	168.51	
6,322.39	6.82	168.51	6,280.84	-689.48	140.17	0.00	0.00	0.00	0.00	
7,530.78	90.00	0.58	7,080.00	21.63	167.37	8.00	6.88	-13.90	-167.84	WARNER 2B-10H-E1
14,563.38	90.00	0.58	7,080.00	7,053.87	238.67	0.00	0.00	0.00	0.00	WARNER 2B-10H-E1

<b>Database:</b>	EDM 5000.15 Single User Db	<b>Local Co-ordinate Reference:</b>	Well WARNER 2B-10H-E165
<b>Company:</b>	Crestone Peak Resources	<b>TVD Reference:</b>	WELL @ 4993.00usft (Original Well Elev)
<b>Project:</b>	Sec 10 T1N-R65W	<b>MD Reference:</b>	WELL @ 4993.00usft (Original Well Elev)
<b>Site:</b>	Warner Pad	<b>North Reference:</b>	True
<b>Well:</b>	WARNER 2B-10H-E165	<b>Survey Calculation Method:</b>	Minimum Curvature
<b>Wellbore:</b>	Wellbore #1		
<b>Design:</b>	Plan #3 27Sep18 kjs		

Planned Survey									
Measured Depth (usft)	Inclination (°)	Azimuth (°)	Vertical Depth (usft)	+N/-S (usft)	+E/-W (usft)	Map Northing (usft)	Map Easting (usft)	Latitude	Longitude
0.00	0.00	0.00	0.00	0.00	0.00	1,268,462.828	3,235,543.456	40.067252	-104.658392
100.00	0.00	0.00	100.00	0.00	0.00	1,268,462.828	3,235,543.456	40.067252	-104.658392
200.00	0.00	0.00	200.00	0.00	0.00	1,268,462.828	3,235,543.456	40.067252	-104.658392
230.00	0.00	0.00	230.00	0.00	0.00	1,268,462.828	3,235,543.456	40.067252	-104.658392
<b>Start Build 2.00</b>									
300.00	1.40	168.51	299.99	-0.84	0.17	1,268,461.991	3,235,543.635	40.067250	-104.658392
400.00	3.40	168.51	399.90	-4.94	1.00	1,268,457.896	3,235,544.508	40.067239	-104.658389
500.00	5.40	168.51	499.60	-12.46	2.53	1,268,450.393	3,235,546.107	40.067218	-104.658383
571.17	6.82	168.51	570.36	-19.88	4.04	1,268,442.983	3,235,547.687	40.067197	-104.658378
<b>Hold 6.82 Inc, 168.51 Az</b>									
600.00	6.82	168.51	598.99	-23.24	4.72	1,268,439.633	3,235,548.402	40.067188	-104.658375
700.00	6.82	168.51	698.28	-34.88	7.09	1,268,428.013	3,235,550.879	40.067156	-104.658367
800.00	6.82	168.51	797.57	-46.53	9.46	1,268,416.393	3,235,553.356	40.067124	-104.658358
900.00	6.82	168.51	896.87	-58.17	11.83	1,268,404.774	3,235,555.834	40.067092	-104.658350
1,000.00	6.82	168.51	996.16	-69.81	14.19	1,268,393.154	3,235,558.311	40.067060	-104.658342
1,100.00	6.82	168.51	1,095.45	-81.45	16.56	1,268,381.534	3,235,560.788	40.067028	-104.658333
1,200.00	6.82	168.51	1,194.74	-93.10	18.93	1,268,369.915	3,235,563.265	40.066997	-104.658325
1,300.00	6.82	168.51	1,294.03	-104.74	21.29	1,268,358.295	3,235,565.743	40.066965	-104.658316
1,400.00	6.82	168.51	1,393.32	-116.38	23.66	1,268,346.675	3,235,568.220	40.066933	-104.658308
1,500.00	6.82	168.51	1,492.62	-128.02	26.03	1,268,335.056	3,235,570.697	40.066901	-104.658299
1,600.00	6.82	168.51	1,591.91	-139.67	28.39	1,268,323.436	3,235,573.175	40.066869	-104.658291
1,700.00	6.82	168.51	1,691.20	-151.31	30.76	1,268,311.816	3,235,575.652	40.066837	-104.658282
1,800.00	6.82	168.51	1,790.49	-162.95	33.13	1,268,300.197	3,235,578.129	40.066805	-104.658274
1,900.00	6.82	168.51	1,889.78	-174.60	35.49	1,268,288.577	3,235,580.607	40.066773	-104.658265
2,000.00	6.82	168.51	1,989.07	-186.24	37.86	1,268,276.957	3,235,583.084	40.066741	-104.658257
2,100.00	6.82	168.51	2,088.37	-197.88	40.23	1,268,265.338	3,235,585.561	40.066709	-104.658249
2,200.00	6.82	168.51	2,187.66	-209.52	42.60	1,268,253.718	3,235,588.039	40.066677	-104.658240
2,300.00	6.82	168.51	2,286.95	-221.17	44.96	1,268,242.099	3,235,590.516	40.066645	-104.658232
2,400.00	6.82	168.51	2,386.24	-232.81	47.33	1,268,230.479	3,235,592.993	40.066613	-104.658223
2,500.00	6.82	168.51	2,485.53	-244.45	49.70	1,268,218.859	3,235,595.470	40.066581	-104.658215
2,600.00	6.82	168.51	2,584.82	-256.09	52.06	1,268,207.240	3,235,597.948	40.066549	-104.658206
2,700.00	6.82	168.51	2,684.12	-267.74	54.43	1,268,195.620	3,235,600.425	40.066517	-104.658198
2,800.00	6.82	168.51	2,783.41	-279.38	56.80	1,268,184.000	3,235,602.902	40.066485	-104.658189
2,900.00	6.82	168.51	2,882.70	-291.02	59.16	1,268,172.381	3,235,605.380	40.066453	-104.658181
3,000.00	6.82	168.51	2,981.99	-302.66	61.53	1,268,160.761	3,235,607.857	40.066421	-104.658172
3,100.00	6.82	168.51	3,081.28	-314.31	63.90	1,268,149.141	3,235,610.334	40.066389	-104.658164
3,200.00	6.82	168.51	3,180.57	-325.95	66.26	1,268,137.522	3,235,612.812	40.066357	-104.658156
3,300.00	6.82	168.51	3,279.87	-337.59	68.63	1,268,125.902	3,235,615.289	40.066325	-104.658147
3,400.00	6.82	168.51	3,379.16	-349.24	71.00	1,268,114.282	3,235,617.766	40.066293	-104.658139
3,500.00	6.82	168.51	3,478.45	-360.88	73.37	1,268,102.663	3,235,620.244	40.066261	-104.658130
3,600.00	6.82	168.51	3,577.74	-372.52	75.73	1,268,091.043	3,235,622.721	40.066229	-104.658122
3,700.00	6.82	168.51	3,677.03	-384.16	78.10	1,268,079.423	3,235,625.198	40.066197	-104.658113
3,800.00	6.82	168.51	3,776.33	-395.81	80.47	1,268,067.804	3,235,627.676	40.066166	-104.658105
3,900.00	6.82	168.51	3,875.62	-407.45	82.83	1,268,056.184	3,235,630.153	40.066134	-104.658096
4,000.00	6.82	168.51	3,974.91	-419.09	85.20	1,268,044.564	3,235,632.630	40.066102	-104.658088
4,100.00	6.82	168.51	4,074.20	-430.73	87.57	1,268,032.945	3,235,635.107	40.066070	-104.658079
4,200.00	6.82	168.51	4,173.49	-442.38	89.93	1,268,021.325	3,235,637.585	40.066038	-104.658071
4,300.00	6.82	168.51	4,272.78	-454.02	92.30	1,268,009.705	3,235,640.062	40.066006	-104.658062
4,400.00	6.82	168.51	4,372.08	-465.66	94.67	1,267,998.086	3,235,642.539	40.065974	-104.658054
4,500.00	6.82	168.51	4,471.37	-477.30	97.03	1,267,986.466	3,235,645.017	40.065942	-104.658046
4,600.00	6.82	168.51	4,570.66	-488.95	99.40	1,267,974.846	3,235,647.494	40.065910	-104.658037
4,700.00	6.82	168.51	4,669.95	-500.59	101.77	1,267,963.227	3,235,649.971	40.065878	-104.658029
4,800.00	6.82	168.51	4,769.24	-512.23	104.14	1,267,951.607	3,235,652.449	40.065846	-104.658020
4,900.00	6.82	168.51	4,868.53	-523.87	106.50	1,267,939.987	3,235,654.926	40.065814	-104.658012

<b>Database:</b>	EDM 5000.15 Single User Db	<b>Local Co-ordinate Reference:</b>	Well WARNER 2B-10H-E165
<b>Company:</b>	Crestone Peak Resources	<b>TVD Reference:</b>	WELL @ 4993.00usft (Original Well Elev)
<b>Project:</b>	Sec 10 T1N-R65W	<b>MD Reference:</b>	WELL @ 4993.00usft (Original Well Elev)
<b>Site:</b>	Warner Pad	<b>North Reference:</b>	True
<b>Well:</b>	WARNER 2B-10H-E165	<b>Survey Calculation Method:</b>	Minimum Curvature
<b>Wellbore:</b>	Wellbore #1		
<b>Design:</b>	Plan #3 27Sep18 kjs		

Planned Survey									
Measured Depth (usft)	Inclination (°)	Azimuth (°)	Vertical Depth (usft)	+N/-S (usft)	+E/-W (usft)	Map Northing (usft)	Map Easting (usft)	Latitude	Longitude
5,000.00	6.82	168.51	4,967.83	-535.52	108.87	1,267,928.368	3,235,657.403	40.065782	-104.658003
5,100.00	6.82	168.51	5,067.12	-547.16	111.24	1,267,916.748	3,235,659.881	40.065750	-104.657995
5,200.00	6.82	168.51	5,166.41	-558.80	113.60	1,267,905.128	3,235,662.358	40.065718	-104.657986
5,300.00	6.82	168.51	5,265.70	-570.45	115.97	1,267,893.509	3,235,664.835	40.065686	-104.657978
5,400.00	6.82	168.51	5,364.99	-582.09	118.34	1,267,881.889	3,235,667.312	40.065654	-104.657969
5,500.00	6.82	168.51	5,464.28	-593.73	120.70	1,267,870.269	3,235,669.790	40.065622	-104.657961
5,600.00	6.82	168.51	5,563.58	-605.37	123.07	1,267,858.650	3,235,672.267	40.065590	-104.657953
5,700.00	6.82	168.51	5,662.87	-617.02	125.44	1,267,847.030	3,235,674.744	40.065558	-104.657944
5,800.00	6.82	168.51	5,762.16	-628.66	127.80	1,267,835.410	3,235,677.222	40.065526	-104.657936
5,900.00	6.82	168.51	5,861.45	-640.30	130.17	1,267,823.791	3,235,679.699	40.065494	-104.657927
6,000.00	6.82	168.51	5,960.74	-651.94	132.54	1,267,812.171	3,235,682.176	40.065462	-104.657919
6,100.00	6.82	168.51	6,060.03	-663.59	134.91	1,267,800.551	3,235,684.654	40.065430	-104.657910
6,200.00	6.82	168.51	6,159.33	-675.23	137.27	1,267,788.932	3,235,687.131	40.065398	-104.657902
6,300.00	6.82	168.51	6,258.62	-686.87	139.64	1,267,777.312	3,235,689.608	40.065366	-104.657893
6,322.39	6.82	168.51	6,280.84	-689.48	140.17	1,267,774.711	3,235,690.163	40.065359	-104.657891
<b>KOP 8/100</b>									
6,400.00	1.51	108.47	6,358.25	-694.32	142.06	1,267,769.883	3,235,692.097	40.065346	-104.657885
6,500.00	7.67	11.29	6,457.94	-688.18	144.61	1,267,776.047	3,235,694.595	40.065363	-104.657876
6,600.00	15.60	5.72	6,555.81	-668.23	147.27	1,267,796.030	3,235,697.057	40.065418	-104.657866
6,700.00	23.58	3.87	6,649.95	-634.84	149.96	1,267,829.443	3,235,699.434	40.065509	-104.657856
6,800.00	31.57	2.91	6,738.52	-588.67	152.64	1,267,875.637	3,235,701.679	40.065636	-104.657847
6,900.00	39.56	2.32	6,819.80	-530.61	155.26	1,267,933.712	3,235,703.750	40.065795	-104.657838
7,000.00	47.55	1.89	6,892.21	-461.81	157.77	1,268,002.538	3,235,705.606	40.065984	-104.657829
7,100.00	55.55	1.56	6,954.34	-383.59	160.12	1,268,080.775	3,235,707.210	40.066199	-104.657820
7,200.00	63.55	1.29	7,004.98	-297.48	162.26	1,268,166.900	3,235,708.531	40.066435	-104.657813
7,300.00	71.54	1.06	7,043.15	-205.16	164.15	1,268,259.237	3,235,709.545	40.066689	-104.657806
7,400.00	79.54	0.84	7,068.10	-108.42	165.75	1,268,355.990	3,235,710.230	40.066954	-104.657800
7,500.00	87.54	0.64	7,079.34	-9.14	167.04	1,268,455.273	3,235,710.574	40.067227	-104.657795
7,530.78	90.00	0.58	7,080.00	21.63	167.37	1,268,486.045	3,235,710.610	40.067311	-104.657794
<b>LP 90 Inc, 0.58 Az - WARNER 2B-10H-E165 TPZ</b>									
7,600.00	90.00	0.58	7,080.00	90.84	168.07	1,268,555.264	3,235,710.654	40.067501	-104.657792
7,700.00	90.00	0.58	7,080.00	190.84	169.08	1,268,655.264	3,235,710.717	40.067776	-104.657788
7,800.00	90.00	0.58	7,080.00	290.83	170.09	1,268,755.264	3,235,710.780	40.068050	-104.657785
7,900.00	90.00	0.58	7,080.00	390.83	171.10	1,268,855.264	3,235,710.844	40.068325	-104.657781
8,000.00	90.00	0.58	7,080.00	490.82	172.12	1,268,955.264	3,235,710.907	40.068599	-104.657777
8,100.00	90.00	0.58	7,080.00	590.82	173.13	1,269,055.264	3,235,710.970	40.068874	-104.657774
8,200.00	90.00	0.58	7,080.00	690.81	174.14	1,269,155.264	3,235,711.033	40.069148	-104.657770
8,300.00	90.00	0.58	7,080.00	790.81	175.15	1,269,255.264	3,235,711.096	40.069423	-104.657766
8,400.00	90.00	0.58	7,080.00	890.80	176.17	1,269,355.263	3,235,711.160	40.069697	-104.657763
8,500.00	90.00	0.58	7,080.00	990.80	177.18	1,269,455.263	3,235,711.223	40.069972	-104.657759
8,600.00	90.00	0.58	7,080.00	1,090.79	178.19	1,269,555.263	3,235,711.286	40.070246	-104.657756
8,700.00	90.00	0.58	7,080.00	1,190.79	179.20	1,269,655.263	3,235,711.349	40.070521	-104.657752
8,800.00	90.00	0.58	7,080.00	1,290.78	180.21	1,269,755.263	3,235,711.412	40.070795	-104.657748
8,900.00	90.00	0.58	7,080.00	1,390.78	181.23	1,269,855.263	3,235,711.476	40.071070	-104.657745
9,000.00	90.00	0.58	7,080.00	1,490.77	182.24	1,269,955.263	3,235,711.539	40.071344	-104.657741
9,100.00	90.00	0.58	7,080.00	1,590.77	183.25	1,270,055.263	3,235,711.602	40.071619	-104.657737
9,200.00	90.00	0.58	7,080.00	1,690.76	184.26	1,270,155.263	3,235,711.665	40.071893	-104.657734
9,300.00	90.00	0.58	7,080.00	1,790.76	185.28	1,270,255.263	3,235,711.728	40.072168	-104.657730
9,400.00	90.00	0.58	7,080.00	1,890.75	186.29	1,270,355.263	3,235,711.792	40.072442	-104.657727
9,500.00	90.00	0.58	7,080.00	1,990.75	187.30	1,270,455.263	3,235,711.855	40.072717	-104.657723
9,600.00	90.00	0.58	7,080.00	2,090.74	188.31	1,270,555.263	3,235,711.918	40.072992	-104.657719
9,700.00	90.00	0.58	7,080.00	2,190.74	189.33	1,270,655.263	3,235,711.981	40.073266	-104.657716
9,800.00	90.00	0.58	7,080.00	2,290.73	190.34	1,270,755.263	3,235,712.044	40.073541	-104.657712
9,900.00	90.00	0.58	7,080.00	2,390.73	191.35	1,270,855.263	3,235,712.108	40.073815	-104.657709

<b>Database:</b>	EDM 5000.15 Single User Db	<b>Local Co-ordinate Reference:</b>	Well WARNER 2B-10H-E165
<b>Company:</b>	Crestone Peak Resources	<b>TVD Reference:</b>	WELL @ 4993.00usft (Original Well Elev)
<b>Project:</b>	Sec 10 T1N-R65W	<b>MD Reference:</b>	WELL @ 4993.00usft (Original Well Elev)
<b>Site:</b>	Warner Pad	<b>North Reference:</b>	True
<b>Well:</b>	WARNER 2B-10H-E165	<b>Survey Calculation Method:</b>	Minimum Curvature
<b>Wellbore:</b>	Wellbore #1		
<b>Design:</b>	Plan #3 27Sep18 kjs		

Planned Survey									
Measured Depth (usft)	Inclination (°)	Azimuth (°)	Vertical Depth (usft)	+N/-S (usft)	+E/-W (usft)	Map Northing (usft)	Map Easting (usft)	Latitude	Longitude
10,000.00	90.00	0.58	7,080.00	2,490.72	192.36	1,270,955.263	3,235,712.171	40.074090	-104.657705
10,100.00	90.00	0.58	7,080.00	2,590.72	193.37	1,271,055.263	3,235,712.234	40.074364	-104.657701
10,200.00	90.00	0.58	7,080.00	2,690.71	194.39	1,271,155.263	3,235,712.297	40.074639	-104.657698
10,300.00	90.00	0.58	7,080.00	2,790.71	195.40	1,271,255.263	3,235,712.360	40.074913	-104.657694
10,400.00	90.00	0.58	7,080.00	2,890.70	196.41	1,271,355.263	3,235,712.423	40.075188	-104.657690
10,500.00	90.00	0.58	7,080.00	2,990.70	197.42	1,271,455.263	3,235,712.487	40.075462	-104.657687
10,600.00	90.00	0.58	7,080.00	3,090.69	198.44	1,271,555.263	3,235,712.550	40.075737	-104.657683
10,700.00	90.00	0.58	7,080.00	3,190.69	199.45	1,271,655.263	3,235,712.613	40.076011	-104.657680
10,800.00	90.00	0.58	7,080.00	3,290.68	200.46	1,271,755.263	3,235,712.676	40.076286	-104.657676
10,900.00	90.00	0.58	7,080.00	3,390.68	201.47	1,271,855.263	3,235,712.739	40.076560	-104.657672
11,000.00	90.00	0.58	7,080.00	3,490.67	202.48	1,271,955.263	3,235,712.803	40.076835	-104.657669
11,100.00	90.00	0.58	7,080.00	3,590.67	203.50	1,272,055.263	3,235,712.866	40.077109	-104.657665
11,200.00	90.00	0.58	7,080.00	3,690.66	204.51	1,272,155.263	3,235,712.929	40.077384	-104.657661
11,300.00	90.00	0.58	7,080.00	3,790.66	205.52	1,272,255.263	3,235,712.992	40.077658	-104.657658
11,400.00	90.00	0.58	7,080.00	3,890.65	206.53	1,272,355.263	3,235,713.055	40.077933	-104.657654
11,500.00	90.00	0.58	7,080.00	3,990.65	207.55	1,272,455.263	3,235,713.119	40.078207	-104.657651
11,600.00	90.00	0.58	7,080.00	4,090.64	208.56	1,272,555.263	3,235,713.182	40.078482	-104.657647
11,700.00	90.00	0.58	7,080.00	4,190.63	209.57	1,272,655.263	3,235,713.245	40.078756	-104.657643
11,800.00	90.00	0.58	7,080.00	4,290.63	210.58	1,272,755.263	3,235,713.308	40.079031	-104.657640
11,900.00	90.00	0.58	7,080.00	4,390.62	211.60	1,272,855.263	3,235,713.371	40.079305	-104.657636
12,000.00	90.00	0.58	7,080.00	4,490.62	212.61	1,272,955.263	3,235,713.435	40.079580	-104.657632
12,100.00	90.00	0.58	7,080.00	4,590.61	213.62	1,273,055.263	3,235,713.498	40.079854	-104.657629
12,200.00	90.00	0.58	7,080.00	4,690.61	214.63	1,273,155.263	3,235,713.561	40.080129	-104.657625
12,300.00	90.00	0.58	7,080.00	4,790.60	215.64	1,273,255.263	3,235,713.624	40.080403	-104.657622
12,400.00	90.00	0.58	7,080.00	4,890.60	216.66	1,273,355.262	3,235,713.687	40.080678	-104.657618
12,500.00	90.00	0.58	7,080.00	4,990.59	217.67	1,273,455.262	3,235,713.751	40.080952	-104.657614
12,600.00	90.00	0.58	7,080.00	5,090.59	218.68	1,273,555.262	3,235,713.814	40.081227	-104.657611
12,700.00	90.00	0.58	7,080.00	5,190.58	219.69	1,273,655.262	3,235,713.877	40.081501	-104.657607
12,800.00	90.00	0.58	7,080.00	5,290.58	220.71	1,273,755.263	3,235,713.940	40.081776	-104.657604
12,900.00	90.00	0.58	7,080.00	5,390.57	221.72	1,273,855.263	3,235,714.003	40.082050	-104.657600
13,000.00	90.00	0.58	7,080.00	5,490.57	222.73	1,273,955.263	3,235,714.067	40.082325	-104.657596
13,100.00	90.00	0.58	7,080.00	5,590.56	223.74	1,274,055.263	3,235,714.130	40.082599	-104.657593
13,200.00	90.00	0.58	7,080.00	5,690.56	224.75	1,274,155.263	3,235,714.193	40.082874	-104.657589
13,300.00	90.00	0.58	7,080.00	5,790.55	225.77	1,274,255.263	3,235,714.256	40.083148	-104.657585
13,400.00	90.00	0.58	7,080.00	5,890.55	226.78	1,274,355.263	3,235,714.319	40.083423	-104.657582
13,500.00	90.00	0.58	7,080.00	5,990.54	227.79	1,274,455.263	3,235,714.383	40.083697	-104.657578
13,600.00	90.00	0.58	7,080.00	6,090.54	228.80	1,274,555.263	3,235,714.446	40.083972	-104.657575
13,700.00	90.00	0.58	7,080.00	6,190.53	229.82	1,274,655.263	3,235,714.509	40.084246	-104.657571
13,800.00	90.00	0.58	7,080.00	6,290.53	230.83	1,274,755.263	3,235,714.572	40.084521	-104.657567
13,900.00	90.00	0.58	7,080.00	6,390.52	231.84	1,274,855.263	3,235,714.635	40.084795	-104.657564
14,000.00	90.00	0.58	7,080.00	6,490.52	232.85	1,274,955.263	3,235,714.699	40.085070	-104.657560
14,100.00	90.00	0.58	7,080.00	6,590.51	233.87	1,275,055.263	3,235,714.762	40.085344	-104.657556
14,200.00	90.00	0.58	7,080.00	6,690.51	234.88	1,275,155.263	3,235,714.825	40.085619	-104.657553
14,300.00	90.00	0.58	7,080.00	6,790.50	235.89	1,275,255.263	3,235,714.888	40.085893	-104.657549
14,400.00	90.00	0.58	7,080.00	6,890.50	236.90	1,275,355.263	3,235,714.951	40.086168	-104.657546
14,500.00	90.00	0.58	7,080.00	6,990.49	237.91	1,275,455.263	3,235,715.015	40.086442	-104.657542
14,563.38	90.00	0.58	7,080.00	7,053.87	238.67	1,275,518.644	3,235,715.166	40.086616	-104.657539
TD at 14563.38 - WARNER 2B-10H-E165 BHL									

<b>Database:</b>	EDM 5000.15 Single User Db	<b>Local Co-ordinate Reference:</b>	Well WARNER 2B-10H-E165
<b>Company:</b>	Crestone Peak Resources	<b>TVD Reference:</b>	WELL @ 4993.00usft (Original Well Elev)
<b>Project:</b>	Sec 10 T1N-R65W	<b>MD Reference:</b>	WELL @ 4993.00usft (Original Well Elev)
<b>Site:</b>	Warner Pad	<b>North Reference:</b>	True
<b>Well:</b>	WARNER 2B-10H-E165	<b>Survey Calculation Method:</b>	Minimum Curvature
<b>Wellbore:</b>	Wellbore #1		
<b>Design:</b>	Plan #3 27Sep18 kjs		

Design Targets									
Target Name	Dip Angle	Dip Dir.	TVD	+N/-S	+E/-W	Northing	Easting	Latitude	Longitude
- hit/miss target	(°)	(°)	(usft)	(usft)	(usft)	(usft)	(usft)		
- Shape									
WARNER 2B-10H-E165	0.00	0.00	7,080.00	21.63	167.37	1,268,486.045	3,235,710.610	40.067311	-104.657794
- plan hits target center									
- Point									
WARNER 2B-10H-E165	0.00	0.00	7,080.00	7,053.87	238.67	1,275,518.644	3,235,715.166	40.086616	-104.657539
- plan hits target center									
- Point									

Plan Annotations				
Measured Depth	Vertical Depth	Local Coordinates		Comment
(usft)	(usft)	+N/-S (usft)	+E/-W (usft)	
230.00	230.00	0.00	0.00	Start Build 2.00
571.17	570.36	-19.88	4.04	Hold 6.82 Inc, 168.51 Az
6,322.39	6,280.84	-689.48	140.17	KOP 8/100
7,530.78	7,080.00	21.63	167.37	LP 90 Inc, 0.58 Az
14,563.38	7,080.00	7,053.87	238.67	TD at 14563.38