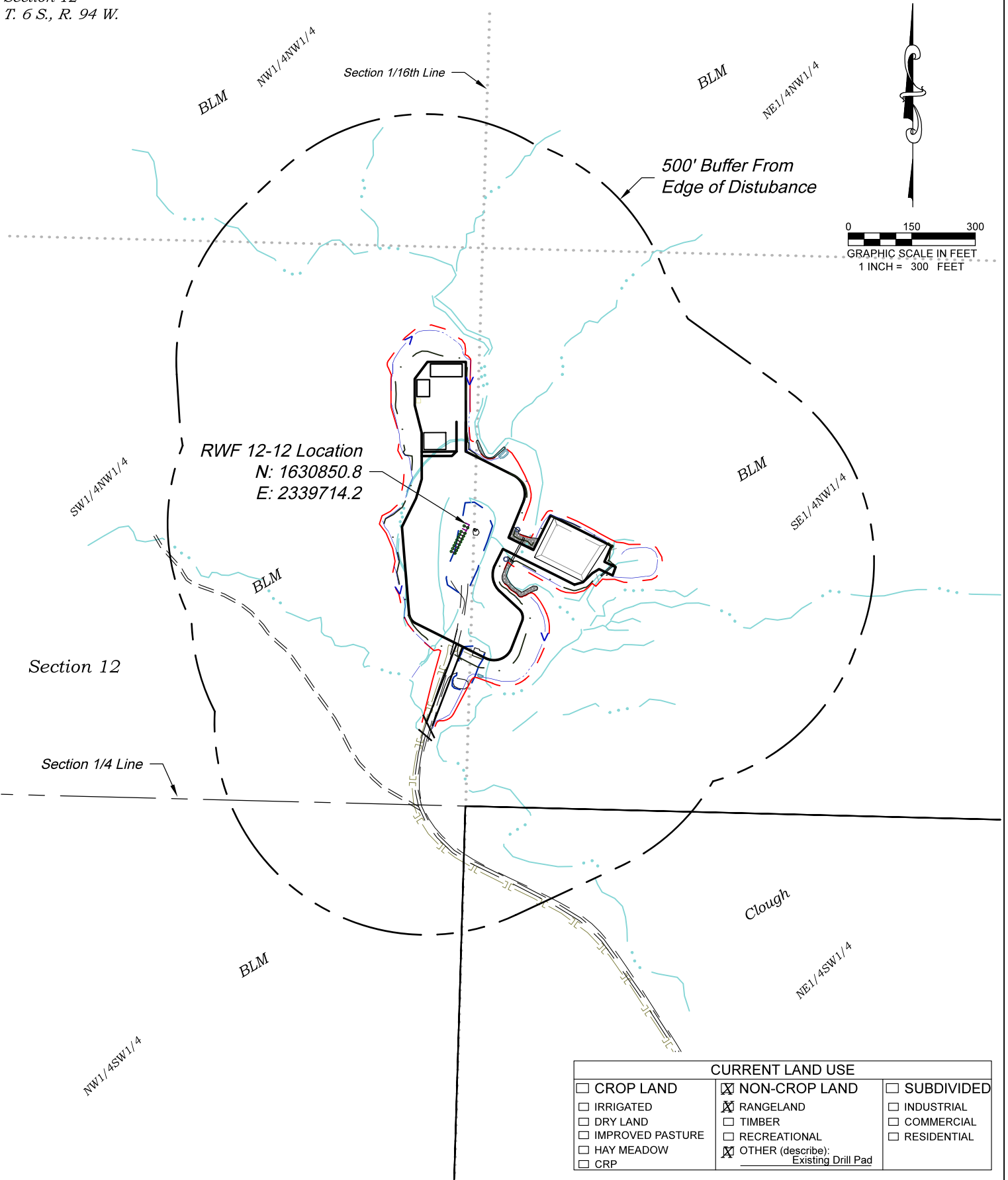


Section 12
T. 6 S., R. 94 W.



CURRENT LAND USE		
<input type="checkbox"/> CROP LAND	<input checked="" type="checkbox"/> NON-CROP LAND	<input type="checkbox"/> SUBDIVIDED
<input type="checkbox"/> IRRIGATED	<input checked="" type="checkbox"/> RANGELAND	<input type="checkbox"/> INDUSTRIAL
<input type="checkbox"/> DRY LAND	<input type="checkbox"/> TIMBER	<input type="checkbox"/> COMMERCIAL
<input type="checkbox"/> IMPROVED PASTURE	<input type="checkbox"/> RECREATIONAL	<input type="checkbox"/> RESIDENTIAL
<input type="checkbox"/> HAY MEADOW	<input checked="" type="checkbox"/> OTHER (describe): Existing Drill Pad	
<input type="checkbox"/> CRP		

REVISED: 6/10/19

SCALE: 1" = 300'
DATE: 5/02/19
PLAT: 6 of 7
PROJECT: TEP Valley
DFT: cs

Construction Plan Prepared for:



TEP Rocky Mountain LLC

RWF 12-12 Drill Pad - Plat 6
LOCATION

136 East Third Street
Rifle, Colorado 81650
Ph. (970) 625-2720
Fax (970) 625-2773



BOOKCLIFF
Survey Services, Inc.

*Visible Improvements to Well Head
(ft.)*

<i>Description</i>	<i>Building</i>	<i>Public Road</i>	<i>Above Ground Utility</i>	<i>Railroad</i>	<i>Property Line</i>	<i>Building Unit</i>	<i>High Occu. Building</i>	<i>DOAA</i>	<i>Child Care Center</i>	<i>School Facility</i>	<i>School Property Line</i>
RWF 23-12	05° 3886	>5280	145° 3805	>5280	178° 597	05° 3886	>5280	>5280	>5280	>5280	>5280
RWF 423-12	04° 3879	>5280	145° 3808	>5280	178° 604	04° 3879	>5280	>5280	>5280	>5280	>5280
RWF 422-12	04° 3872	>5280	145° 3812	>5280	178° 610	04° 3872	>5280	>5280	>5280	>5280	>5280
RWF 443-11	04° 3866	>5280	145° 3815	>5280	179° 617	04° 3866	>5280	>5280	>5280	>5280	>5280
RWF 332-12	04° 3859	>5280	146° 3819	>5280	179° 624	04° 3859	>5280	>5280	>5280	>5280	>5280
RWF 432-11	04° 3852	>5280	146° 3823	>5280	179° 630	04° 3852	>5280	>5280	>5280	>5280	>5280
RWF 32-12	04° 3845	>5280	146° 3826	>5280	180° 637	04° 3845	>5280	>5280	>5280	>5280	>5280
RWF 531-12	04° 3838	>5280	146° 3830	>5280	180° 644	04° 3838	>5280	>5280	>5280	>5280	>5280
RWF 431-12	04° 3824	>5280	146° 3837	>5280	180° 657	04° 3824	>5280	>5280	>5280	>5280	>5280
RWF 523-12	05° 3883	>5280	145° 3813	>5280	177° 602	05° 3883	>5280	>5280	>5280	>5280	>5280
RWF 323-12	05° 3876	>5280	145° 3817	>5280	177° 609	05° 3876	>5280	>5280	>5280	>5280	>5280
RWF 43-11	05° 3869	>5280	145° 3821	>5280	178° 615	05° 3869	>5280	>5280	>5280	>5280	>5280
RWF 22-12	05° 3862	>5280	145° 3824	>5280	178° 622	05° 3862	>5280	>5280	>5280	>5280	>5280
RWF 332-11	04° 3855	>5280	146° 3828	>5280	178° 628	04° 3855	>5280	>5280	>5280	>5280	>5280
RWF 324-1	04° 3848	>5280	146° 3831	>5280	178° 635	04° 3848	>5280	>5280	>5280	>5280	>5280
RWF 312-12	04° 3841	>5280	146° 3835	>5280	179° 642	04° 3841	>5280	>5280	>5280	>5280	>5280
RWF 424-1	04° 3834	>5280	146° 3839	>5280	179° 648	04° 3834	>5280	>5280	>5280	>5280	>5280
RWF 524-1	04° 3820	>5280	146° 3846	>5280	180° 662	04° 3820	>5280	>5280	>5280	>5280	>5280

Production Equipment

Seperators	05° 3438	>5280	149° 4170	>5280	175° 970	05° 3438	>5280	>5280	>5280	>5280	>5280
Tanks	05° 3602	>5280	147° 4054	>5280	177° 843	05° 3602	>5280	>5280	>5280	>5280	>5280

REVISED: 6/07/19



SCALE: NA
DATE: 5/16/19
SHEET: 6C of 7
PROJECT: TEP Valley
DFT: cs

Construction Plan Prepared for:



TEP Rocky Mountain LLC

RWF 12-12 Drill Pad - Plat 6C

LOCATION TABLE