

SCALE: 1" = 1000'

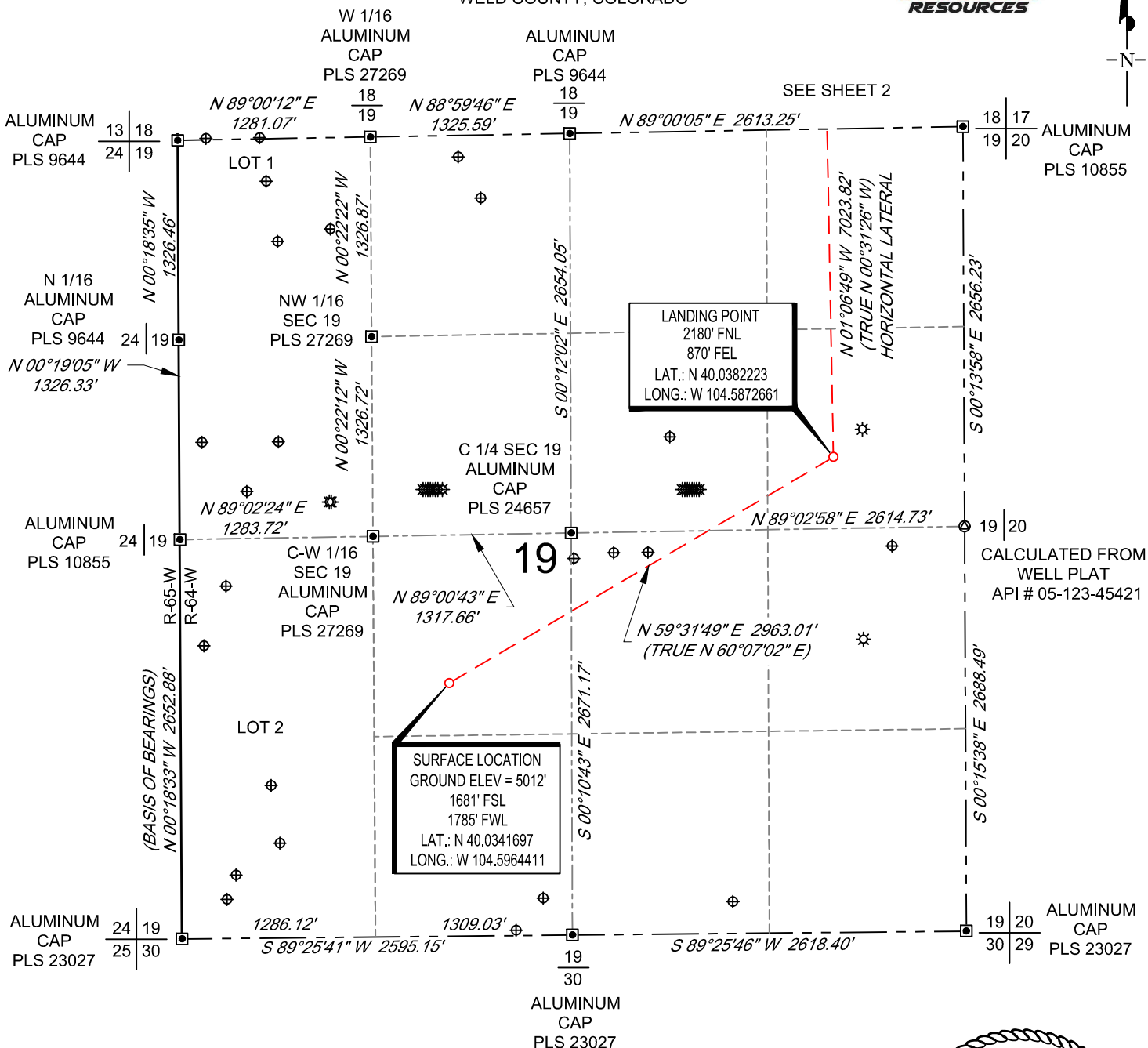
0' 500' 1000'

# WELL LOCATION MAP

SHL NE/4 SW/4, SECTION 19, TOWNSHIP 1-N, RANGE 64-W  
LPL SE/4 NE/4, SECTION 19, TOWNSHIP 1-N, RANGE 64-W  
BHL NE/4 NE/4, SECTION 18, TOWNSHIP 1-N, RANGE 64-W  
WELD COUNTY, COLORADO



N



## NOTES

1. Horizontal (NAD 83) and vertical (NAVD 88) datum is based on the Trimble VRS Network or OPUS Solution.
2. All directions, distances, and dimensions shown hereon are based on coordinates from the "Colorado coordinate system of 1983 north zone" (article 52 of title 38, C.R.S.).
3. All section line dimensions shown hereon are based on field measurements of existing monuments and/or physical evidence found in the field unless otherwise indicated.
4. Existing water well, oil and gas wells per COGCC.
5. See Form 2A, if applicable for visible improvements within 500' of wellhead.
6. Distances to nearest section lines are measured perpendicularly.
7. This is not a land survey nor land survey plat.

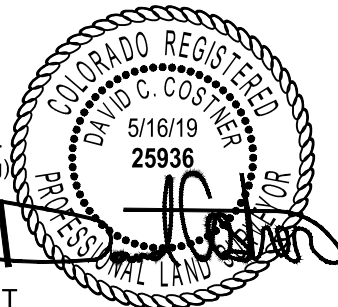
PDOP Reading: 2.0 Instrument Operator: **Ross Carter**  
Date Surveyed: **04/04/2019**

## LEGEND

- ★ Well Head (Existing)
- ⊕ Water Well
- Found Survey Monument

## SURVEYOR'S STATEMENT

The undersigned hereby states that the well location shown hereon was staked on the ground based on existing monumentation and/or physical evidence found in the field and is correct to the best of my knowledge, information and belief.



VERDAD RESOURCES  
ONION 1918-11H  
JOB NO. 125258

JLS	05/16/2019	REVISION:	
SHEET :	1 OF 2		
FILE:LO_ONION_1918_11H			



SCALE: 1" = 1000'

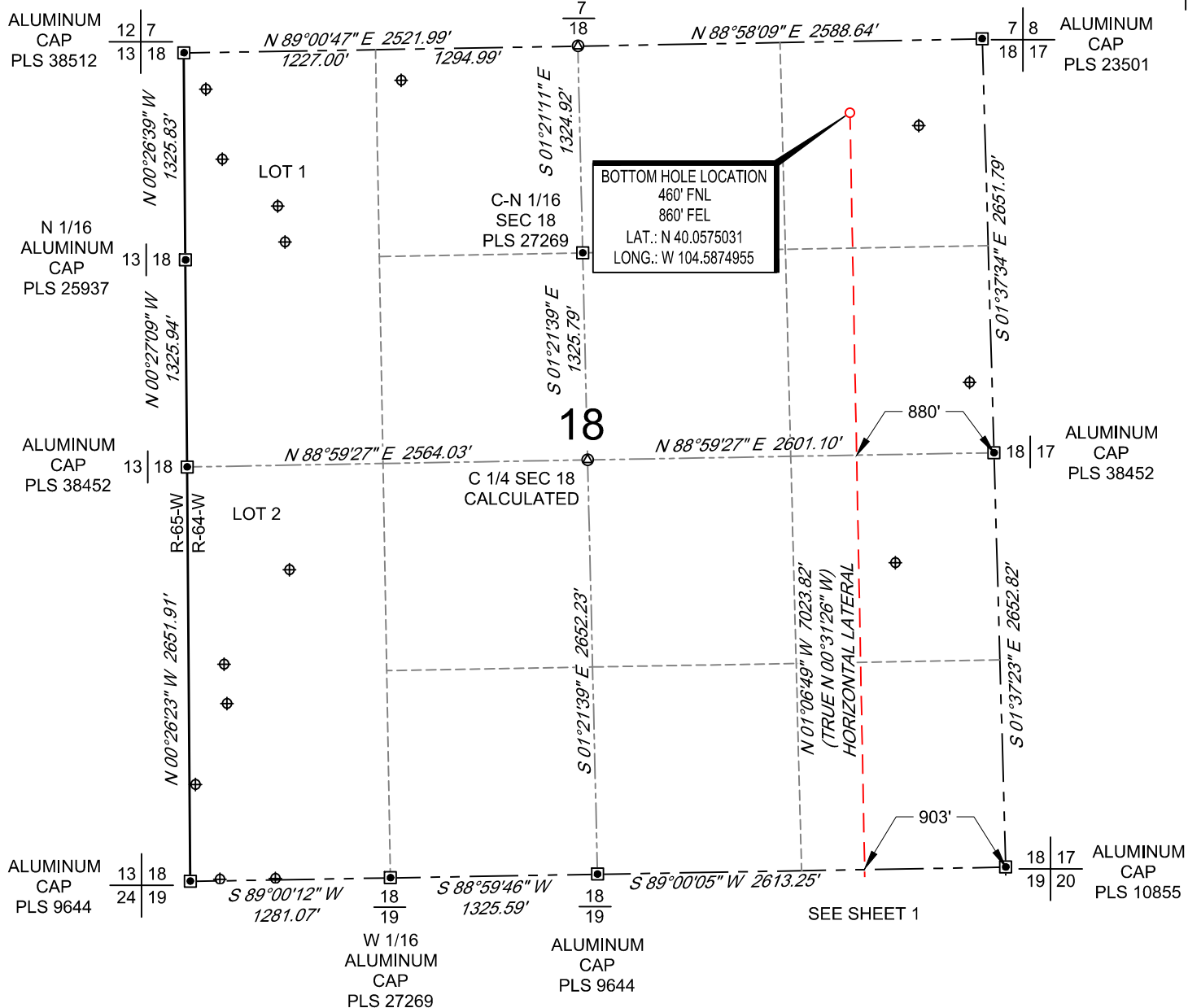
0' 500' 1000'

# BOTTOM HOLE MAP

SHL NE/4 SW/4, SECTION 19, TOWNSHIP 1-N, RANGE 64-W  
 LPL SE/4 NE/4, SECTION 19, TOWNSHIP 1-N, RANGE 64-W  
 BHL NE/4 NE/4, SECTION 18, TOWNSHIP 1-N, RANGE 64-W  
 WELD COUNTY, COLORADO

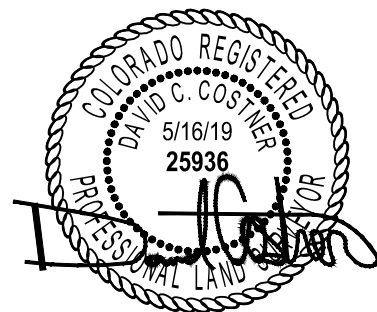


CALCULATED  
 FROM WELL PLAT  
 API # 05-123-45421



## LEGEND

- ⊛ Well Head (Existing)
- ⊕ Water Well
- ⊠ Found Survey Monument



VERDAD RESOURCES  
 ONION 1918-11H  
 JOB NO. 125258

JLS	05/16/2019	REVISION:	
SHEET :	2 OF 2		
FILE:LO_ONION_1918_11H			

**TOPOGRAPHIC**  
 LOYALTY INNOVATION LEGACY  
 520 Stacy Court Ste B, Lafayette, CO 80026  
 303.666.0379 www.topographic.com