

VERDAD RESOURCES

WATTENBERG FIELD

1N-64W-19 ONION 1918 PAD

ONION 1918-07H

Wellbore #1

Plan: Design #1

Standard Planning Report

21 May, 2019

Project: WATTENBERG FIELD
Site: 1N-64W-19 ONION 1918 PAD
Well: ONION 1918-07H
Wellbore: Wellbore #1
Design: Design #1

VERDAD RESOURCES

CASING DETAILS

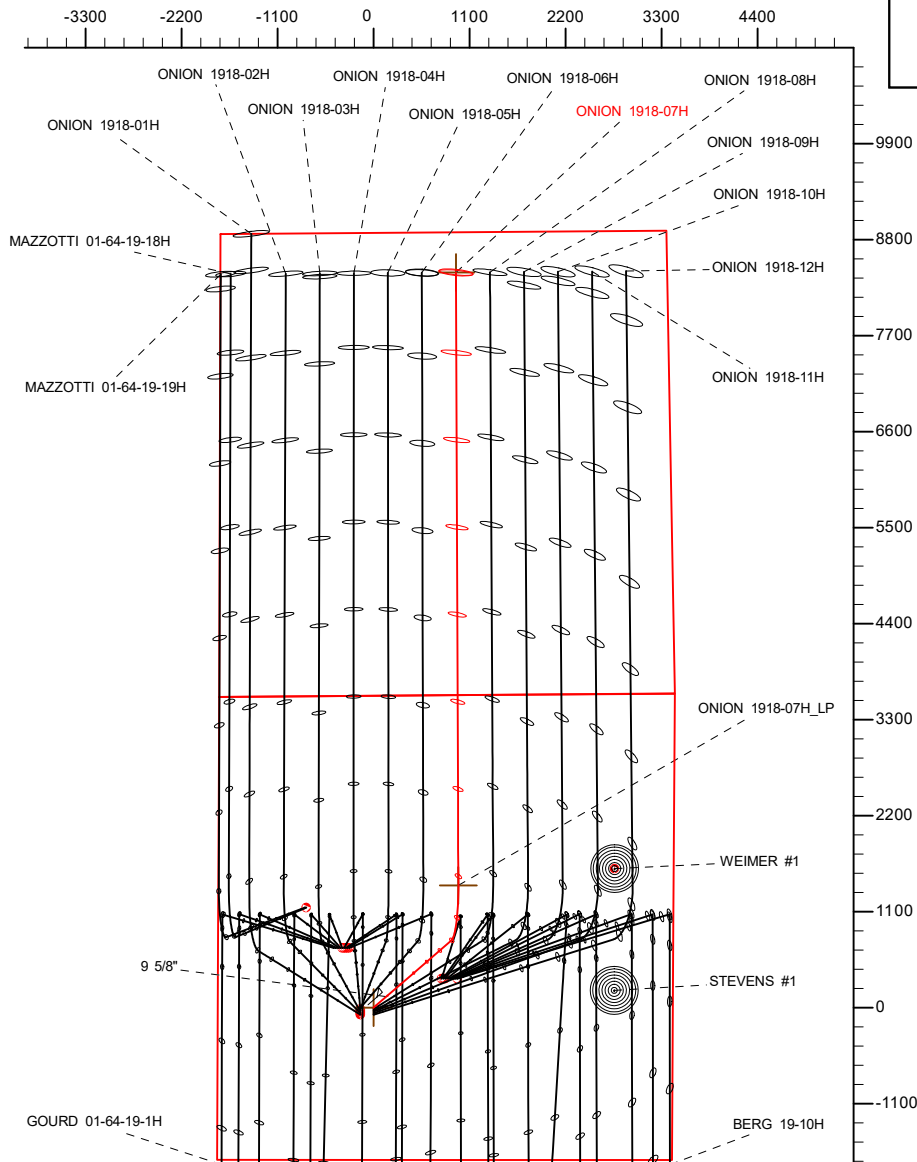
TVD	MD	Name	Size
1700.00	1717.56	9 5/8"	9-5/8

SHL
1745' FSL
1785' FWL

LP
2180' FNL
2468' FEL

BHL
460' FNL
2420' FEL

West(-)/East(+) (2200 usft/in)

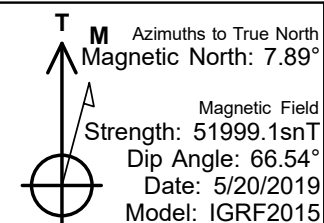
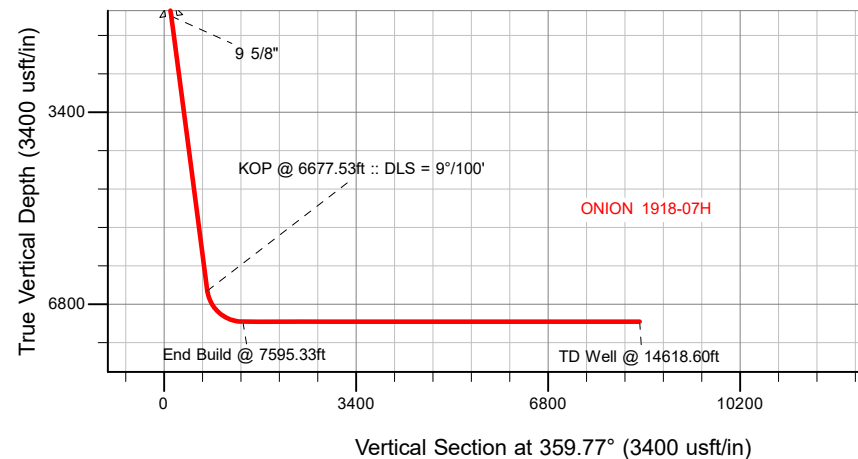


SECTION DETAILS

MD	Inc	Azi	TVD	+N/-S	+E/-W	Dleg	TFace	VSect	Target
0.00	0.00	0.00	0.00	0.00	0.00	0.00	0.00	0.00	
450.00	0.00	0.00	450.00	0.00	0.00	0.00	0.00	0.00	
1021.00	11.42	49.20	1017.23	37.06	42.93	2.00	49.20	36.89	
6677.53	11.42	49.20	6561.77	768.88	890.76	0.00	0.00	765.30	
7595.33	90.00	359.77	7110.00	1400.54	972.32	9.00	-50.00	1396.63	
14618.60	90.00	359.77	7110.00	8423.75	943.77	0.00	0.00	8419.90	ONION 1918-07H_BHL

WELLBORE TARGET DETAILS (LAT/LONG)

Name	TVD	+N/-S	+E/-W	Latitude	Longitude
ONION 1918-07H_SHL	0.00	0.00	0.00	40.034345	-104.596440
ONION 1918-07H_BHL	7110.00	8423.75	943.77	40.057470	-104.593069



WELL DETAILS: ONION 1918-07H

GL = 5012'

RKB = 24' @ 5036.00usft (RIG)

Plan: Design #1 (ONION 1918-07H/Wellbore #1)

Date: 5/21/2019

Hewlett-Packard

Planning Report

Database:	EDM 5000.14 Single User Db	Local Co-ordinate Reference:	Well ONION 1918-07H
Company:	VERDAD RESOURCES	TVD Reference:	RKB = 24' @ 5036.00usft (RIG)
Project:	WATTENBERG FIELD	MD Reference:	RKB = 24' @ 5036.00usft (RIG)
Site:	1N-64W-19 ONION 1918 PAD	North Reference:	True
Well:	ONION 1918-07H	Survey Calculation Method:	Minimum Curvature
Wellbore:	Wellbore #1		
Design:	Design #1		

Project	WATTENBERG FIELD		
Map System:	US State Plane 1983	System Datum:	Mean Sea Level
Geo Datum:	North American Datum 1983		
Map Zone:	Colorado Northern Zone		

Site		1N-64W-19 ONION 1918 PAD			
Site Position:		Northing:	1,256,565.51 usft	Latitude:	40.034126
From:	Lat/Long	Easting:	3,252,854.15 usft	Longitude:	-104.596977
Position Uncertainty:	0.00 usft	Slot Radius:	13-3/16 "	Grid Convergence:	0.58 °

Well	ONION 1918-07H					
Well Position	+N/-S	79.95 usft	Northing:	1,256,646.99 usft	Latitude:	40.034345
	+E/-W	150.37 usft	Easting:	3,253,003.69 usft	Longitude:	-104.596440
Position Uncertainty		3.28 usft	Wellhead Elevation:		Ground Level:	5,012.00 usft

Wellbore	Wellbore #1				
Magnetics	Model Name	Sample Date	Declination (°)	Dip Angle (°)	Field Strength (nT)
	IGRF2015	5/20/2019	7.89	66.54	51,999.05725381

Design	Design #1			
Audit Notes:				
Version:	Phase:	PLAN	Tie On Depth:	0.00
Vertical Section:	Depth From (TVD) (usft)	+N/-S (usft)	+E/-W (usft)	Direction (°)
	0.00	0.00	0.00	359.77

Plan Survey Tool Program	Date	5/20/2019		
Depth From (usft)	Depth To (usft)	Survey (Wellbore)	Tool Name	Remarks
1	0.00	1,700.00	Design #1 (Wellbore #1)	ISCWSA REV 2 MWD Fixed:v2:standard declination
2	1,700.00	14,618.60	Design #1 (Wellbore #1)	ISCWSA REV 2 MWD Fixed:v2:standard declination

Plan Sections										
Measured Depth (usft)	Inclination (°)	Azimuth (°)	Vertical Depth (usft)	+N/-S (usft)	+E/-W (usft)	Dogleg Rate (°/100usft)	Build Rate (°/100usft)	Turn Rate (°/100usft)	TFO (°)	Target
0.00	0.00	0.00	0.00	0.00	0.00	0.00	0.00	0.00	0.00	
450.00	0.00	0.00	450.00	0.00	0.00	0.00	0.00	0.00	0.00	
1,021.00	11.42	49.20	1,017.23	37.06	42.93	2.00	2.00	0.00	49.20	
6,677.53	11.42	49.20	6,561.77	768.88	890.76	0.00	0.00	0.00	0.00	
7,595.33	90.00	359.77	7,110.00	1,400.54	972.32	9.00	8.56	-5.39	-50.00	
14,618.60	90.00	359.77	7,110.00	8,423.75	943.77	0.00	0.00	0.00	0.00	ONION 1918-07H_BF

Hewlett-Packard

Planning Report

Database:	EDM 5000.14 Single User Db	Local Co-ordinate Reference:	Well ONION 1918-07H
Company:	VERDAD RESOURCES	TVD Reference:	RKB = 24' @ 5036.00usft (RIG)
Project:	WATTENBERG FIELD	MD Reference:	RKB = 24' @ 5036.00usft (RIG)
Site:	1N-64W-19 ONION 1918 PAD	North Reference:	True
Well:	ONION 1918-07H	Survey Calculation Method:	Minimum Curvature
Wellbore:	Wellbore #1		
Design:	Design #1		

Planned Survey									
Measured Depth (usft)	Inclination (°)	Azimuth (°)	Vertical Depth (usft)	+N/-S (usft)	+E/-W (usft)	Vertical Section (usft)	Dogleg Rate (°/100usft)	Build Rate (°/100usft)	Turn Rate (°/100usft)
0.00	0.00	0.00	0.00	0.00	0.00	0.00	0.00	0.00	0.00
100.00	0.00	0.00	100.00	0.00	0.00	0.00	0.00	0.00	0.00
200.00	0.00	0.00	200.00	0.00	0.00	0.00	0.00	0.00	0.00
300.00	0.00	0.00	300.00	0.00	0.00	0.00	0.00	0.00	0.00
400.00	0.00	0.00	400.00	0.00	0.00	0.00	0.00	0.00	0.00
450.00	0.00	0.00	450.00	0.00	0.00	0.00	0.00	0.00	0.00
Begin Nudge @ 450.00ft									
500.00	1.00	49.20	500.00	0.29	0.33	0.28	2.00	2.00	0.00
600.00	3.00	49.20	599.93	2.57	2.97	2.55	2.00	2.00	0.00
700.00	5.00	49.20	699.68	7.12	8.25	7.09	2.00	2.00	0.00
800.00	7.00	49.20	799.13	13.95	16.16	13.89	2.00	2.00	0.00
900.00	9.00	49.20	898.15	23.05	26.70	22.94	2.00	2.00	0.00
1,000.00	11.00	49.20	996.63	34.39	39.84	34.23	2.00	2.00	0.00
1,021.00	11.42	49.20	1,017.23	37.06	42.93	36.89	2.00	2.00	0.00
Hold Tangent @ 1021.00ft									
1,100.00	11.42	49.20	1,094.66	47.28	54.78	47.06	0.00	0.00	0.00
1,200.00	11.42	49.20	1,192.68	60.22	69.76	59.94	0.00	0.00	0.00
1,300.00	11.42	49.20	1,290.70	73.16	84.75	72.82	0.00	0.00	0.00
1,400.00	11.42	49.20	1,388.72	86.09	99.74	85.69	0.00	0.00	0.00
1,500.00	11.42	49.20	1,486.74	99.03	114.73	98.57	0.00	0.00	0.00
1,600.00	11.42	49.20	1,584.76	111.97	129.72	111.45	0.00	0.00	0.00
1,700.00	11.42	49.20	1,682.78	124.91	144.71	124.32	0.00	0.00	0.00
1,717.56	11.42	49.20	1,700.00	127.18	147.34	126.59	0.00	0.00	0.00
9 5/8"									
1,800.00	11.42	49.20	1,780.80	137.84	159.69	137.20	0.00	0.00	0.00
1,900.00	11.42	49.20	1,878.82	150.78	174.68	150.08	0.00	0.00	0.00
2,000.00	11.42	49.20	1,976.84	163.72	189.67	162.96	0.00	0.00	0.00
2,100.00	11.42	49.20	2,074.86	176.66	204.66	175.83	0.00	0.00	0.00
2,200.00	11.42	49.20	2,172.89	189.60	219.65	188.71	0.00	0.00	0.00
2,300.00	11.42	49.20	2,270.91	202.53	234.64	201.59	0.00	0.00	0.00
2,400.00	11.42	49.20	2,368.93	215.47	249.63	214.47	0.00	0.00	0.00
2,500.00	11.42	49.20	2,466.95	228.41	264.61	227.34	0.00	0.00	0.00
2,600.00	11.42	49.20	2,564.97	241.35	279.60	240.22	0.00	0.00	0.00
2,700.00	11.42	49.20	2,662.99	254.28	294.59	253.10	0.00	0.00	0.00
2,800.00	11.42	49.20	2,761.01	267.22	309.58	265.98	0.00	0.00	0.00
2,900.00	11.42	49.20	2,859.03	280.16	324.57	278.85	0.00	0.00	0.00
3,000.00	11.42	49.20	2,957.05	293.10	339.56	291.73	0.00	0.00	0.00
3,100.00	11.42	49.20	3,055.07	306.03	354.54	304.61	0.00	0.00	0.00
3,200.00	11.42	49.20	3,153.09	318.97	369.53	317.49	0.00	0.00	0.00
3,300.00	11.42	49.20	3,251.11	331.91	384.52	330.36	0.00	0.00	0.00
3,400.00	11.42	49.20	3,349.13	344.85	399.51	343.24	0.00	0.00	0.00
3,500.00	11.42	49.20	3,447.15	357.79	414.50	356.12	0.00	0.00	0.00
3,600.00	11.42	49.20	3,545.17	370.72	429.49	369.00	0.00	0.00	0.00
3,700.00	11.42	49.20	3,643.19	383.66	444.48	381.87	0.00	0.00	0.00
3,800.00	11.42	49.20	3,741.21	396.60	459.46	394.75	0.00	0.00	0.00
3,900.00	11.42	49.20	3,839.23	409.54	474.45	407.63	0.00	0.00	0.00
4,000.00	11.42	49.20	3,937.25	422.47	489.44	420.51	0.00	0.00	0.00
4,100.00	11.42	49.20	4,035.27	435.41	504.43	433.38	0.00	0.00	0.00
4,200.00	11.42	49.20	4,133.29	448.35	519.42	446.26	0.00	0.00	0.00
4,300.00	11.42	49.20	4,231.31	461.29	534.41	459.14	0.00	0.00	0.00
4,400.00	11.42	49.20	4,329.33	474.22	549.39	472.02	0.00	0.00	0.00
4,500.00	11.42	49.20	4,427.35	487.16	564.38	484.89	0.00	0.00	0.00
4,600.00	11.42	49.20	4,525.37	500.10	579.37	497.77	0.00	0.00	0.00

Hewlett-Packard

Planning Report

Database:	EDM 5000.14 Single User Db	Local Co-ordinate Reference:	Well ONION 1918-07H
Company:	VERDAD RESOURCES	TVD Reference:	RKB = 24' @ 5036.00usft (RIG)
Project:	WATTENBERG FIELD	MD Reference:	RKB = 24' @ 5036.00usft (RIG)
Site:	1N-64W-19 ONION 1918 PAD	North Reference:	True
Well:	ONION 1918-07H	Survey Calculation Method:	Minimum Curvature
Wellbore:	Wellbore #1		
Design:	Design #1		

Planned Survey									
Measured Depth (usft)	Inclination (°)	Azimuth (°)	Vertical Depth (usft)	+N/-S (usft)	+E/-W (usft)	Vertical Section (usft)	Dogleg Rate (°/100usft)	Build Rate (°/100usft)	Turn Rate (°/100usft)
4,700.00	11.42	49.20	4,623.39	513.04	594.36	510.65	0.00	0.00	0.00
4,800.00	11.42	49.20	4,721.41	525.98	609.35	523.53	0.00	0.00	0.00
4,900.00	11.42	49.20	4,819.43	538.91	624.34	536.40	0.00	0.00	0.00
5,000.00	11.42	49.20	4,917.45	551.85	639.33	549.28	0.00	0.00	0.00
5,100.00	11.42	49.20	5,015.47	564.79	654.31	562.16	0.00	0.00	0.00
5,200.00	11.42	49.20	5,113.49	577.73	669.30	575.03	0.00	0.00	0.00
5,300.00	11.42	49.20	5,211.51	590.66	684.29	587.91	0.00	0.00	0.00
5,400.00	11.42	49.20	5,309.53	603.60	699.28	600.79	0.00	0.00	0.00
5,500.00	11.42	49.20	5,407.55	616.54	714.27	613.67	0.00	0.00	0.00
5,600.00	11.42	49.20	5,505.57	629.48	729.26	626.54	0.00	0.00	0.00
5,700.00	11.42	49.20	5,603.59	642.41	744.24	639.42	0.00	0.00	0.00
5,800.00	11.42	49.20	5,701.61	655.35	759.23	652.30	0.00	0.00	0.00
5,900.00	11.42	49.20	5,799.63	668.29	774.22	665.18	0.00	0.00	0.00
6,000.00	11.42	49.20	5,897.65	681.23	789.21	678.05	0.00	0.00	0.00
6,100.00	11.42	49.20	5,995.67	694.17	804.20	690.93	0.00	0.00	0.00
6,200.00	11.42	49.20	6,093.69	707.10	819.19	703.81	0.00	0.00	0.00
6,300.00	11.42	49.20	6,191.71	720.04	834.18	716.69	0.00	0.00	0.00
6,400.00	11.42	49.20	6,289.73	732.98	849.16	729.56	0.00	0.00	0.00
6,500.00	11.42	49.20	6,387.75	745.92	864.15	742.44	0.00	0.00	0.00
6,600.00	11.42	49.20	6,485.77	758.85	879.14	755.32	0.00	0.00	0.00
6,677.53	11.42	49.20	6,561.77	768.88	890.76	765.30	0.00	0.00	0.00
KOP @ 6677.53ft :: DLS = 9°/100'									
6,700.00	12.81	42.20	6,583.74	772.18	894.12	768.59	9.00	6.20	-31.16
6,800.00	20.32	24.25	6,679.58	796.28	908.73	792.62	9.00	7.50	-17.95
6,900.00	28.67	16.06	6,770.53	835.24	922.53	831.53	9.00	8.36	-8.19
7,000.00	37.31	11.38	6,854.34	888.11	935.17	884.35	9.00	8.64	-4.68
7,100.00	46.07	8.27	6,928.95	953.59	946.35	949.78	9.00	8.76	-3.12
7,200.00	54.89	5.96	6,992.52	1,030.07	955.80	1,026.22	9.00	8.82	-2.31
7,300.00	63.75	4.11	7,043.49	1,115.65	963.27	1,111.78	9.00	8.86	-1.85
7,400.00	72.63	2.52	7,080.61	1,208.25	968.59	1,204.35	9.00	8.88	-1.59
7,500.00	81.52	1.08	7,102.96	1,305.57	971.62	1,301.66	9.00	8.89	-1.44
7,595.33	90.00	359.77	7,110.00	1,400.54	972.32	1,396.63	9.00	8.90	-1.38
End Build @ 7595.33ft									
7,600.00	90.00	359.77	7,110.00	1,405.21	972.30	1,401.30	0.00	0.00	0.00
7,700.00	90.00	359.77	7,110.00	1,505.21	971.89	1,501.30	0.00	0.00	0.00
7,800.00	90.00	359.77	7,110.00	1,605.21	971.49	1,601.30	0.00	0.00	0.00
7,900.00	90.00	359.77	7,110.00	1,705.21	971.08	1,701.30	0.00	0.00	0.00
8,000.00	90.00	359.77	7,110.00	1,805.21	970.67	1,801.30	0.00	0.00	0.00
8,100.00	90.00	359.77	7,110.00	1,905.21	970.27	1,901.30	0.00	0.00	0.00
8,200.00	90.00	359.77	7,110.00	2,005.21	969.86	2,001.30	0.00	0.00	0.00
8,300.00	90.00	359.77	7,110.00	2,105.21	969.45	2,101.30	0.00	0.00	0.00
8,400.00	90.00	359.77	7,110.00	2,205.21	969.05	2,201.30	0.00	0.00	0.00
8,500.00	90.00	359.77	7,110.00	2,305.21	968.64	2,301.30	0.00	0.00	0.00
8,600.00	90.00	359.77	7,110.00	2,405.21	968.23	2,401.30	0.00	0.00	0.00
8,700.00	90.00	359.77	7,110.00	2,505.21	967.83	2,501.30	0.00	0.00	0.00
8,800.00	90.00	359.77	7,110.00	2,605.20	967.42	2,601.30	0.00	0.00	0.00
8,900.00	90.00	359.77	7,110.00	2,705.20	967.02	2,701.30	0.00	0.00	0.00
9,000.00	90.00	359.77	7,110.00	2,805.20	966.61	2,801.30	0.00	0.00	0.00
9,100.00	90.00	359.77	7,110.00	2,905.20	966.20	2,901.30	0.00	0.00	0.00
9,200.00	90.00	359.77	7,110.00	3,005.20	965.80	3,001.30	0.00	0.00	0.00
9,300.00	90.00	359.77	7,110.00	3,105.20	965.39	3,101.30	0.00	0.00	0.00
9,400.00	90.00	359.77	7,110.00	3,205.20	964.98	3,201.30	0.00	0.00	0.00
9,500.00	90.00	359.77	7,110.00	3,305.20	964.58	3,301.30	0.00	0.00	0.00
9,600.00	90.00	359.77	7,110.00	3,405.20	964.17	3,401.30	0.00	0.00	0.00

Planning Report

Planned Survey										
Measured Depth (usft)	Inclination (°)	Azimuth (°)	Vertical Depth (usft)	+N/-S (usft)	+E/-W (usft)	Vertical Section (usft)	Dogleg Rate (°/100usft)	Build Rate (°/100usft)	Turn Rate (°/100usft)	
9,700.00	90.00	359.77	7,110.00	3,505.20	963.76	3,501.30	0.00	0.00	0.00	
9,800.00	90.00	359.77	7,110.00	3,605.20	963.36	3,601.30	0.00	0.00	0.00	
9,900.00	90.00	359.77	7,110.00	3,705.20	962.95	3,701.30	0.00	0.00	0.00	
10,000.00	90.00	359.77	7,110.00	3,805.19	962.54	3,801.30	0.00	0.00	0.00	
10,100.00	90.00	359.77	7,110.00	3,905.19	962.14	3,901.30	0.00	0.00	0.00	
10,200.00	90.00	359.77	7,110.00	4,005.19	961.73	4,001.30	0.00	0.00	0.00	
10,300.00	90.00	359.77	7,110.00	4,105.19	961.32	4,101.30	0.00	0.00	0.00	
10,400.00	90.00	359.77	7,110.00	4,205.19	960.92	4,201.30	0.00	0.00	0.00	
10,500.00	90.00	359.77	7,110.00	4,305.19	960.51	4,301.30	0.00	0.00	0.00	
10,600.00	90.00	359.77	7,110.00	4,405.19	960.10	4,401.30	0.00	0.00	0.00	
10,700.00	90.00	359.77	7,110.00	4,505.19	959.70	4,501.30	0.00	0.00	0.00	
10,800.00	90.00	359.77	7,110.00	4,605.19	959.29	4,601.30	0.00	0.00	0.00	
10,900.00	90.00	359.77	7,110.00	4,705.19	958.89	4,701.30	0.00	0.00	0.00	
11,000.00	90.00	359.77	7,110.00	4,805.19	958.48	4,801.30	0.00	0.00	0.00	
11,100.00	90.00	359.77	7,110.00	4,905.19	958.07	4,901.30	0.00	0.00	0.00	
11,200.00	90.00	359.77	7,110.00	5,005.19	957.67	5,001.30	0.00	0.00	0.00	
11,300.00	90.00	359.77	7,110.00	5,105.18	957.26	5,101.30	0.00	0.00	0.00	
11,400.00	90.00	359.77	7,110.00	5,205.18	956.85	5,201.30	0.00	0.00	0.00	
11,500.00	90.00	359.77	7,110.00	5,305.18	956.45	5,301.30	0.00	0.00	0.00	
11,600.00	90.00	359.77	7,110.00	5,405.18	956.04	5,401.30	0.00	0.00	0.00	
11,700.00	90.00	359.77	7,110.00	5,505.18	955.63	5,501.30	0.00	0.00	0.00	
11,800.00	90.00	359.77	7,110.00	5,605.18	955.23	5,601.30	0.00	0.00	0.00	
11,900.00	90.00	359.77	7,110.00	5,705.18	954.82	5,701.30	0.00	0.00	0.00	
12,000.00	90.00	359.77	7,110.00	5,805.18	954.41	5,801.30	0.00	0.00	0.00	
12,100.00	90.00	359.77	7,110.00	5,905.18	954.01	5,901.30	0.00	0.00	0.00	
12,200.00	90.00	359.77	7,110.00	6,005.18	953.60	6,001.30	0.00	0.00	0.00	
12,300.00	90.00	359.77	7,110.00	6,105.18	953.19	6,101.30	0.00	0.00	0.00	
12,400.00	90.00	359.77	7,110.00	6,205.18	952.79	6,201.30	0.00	0.00	0.00	
12,500.00	90.00	359.77	7,110.00	6,305.17	952.38	6,301.30	0.00	0.00	0.00	
12,600.00	90.00	359.77	7,110.00	6,405.17	951.98	6,401.30	0.00	0.00	0.00	
12,700.00	90.00	359.77	7,110.00	6,505.17	951.57	6,501.30	0.00	0.00	0.00	
12,800.00	90.00	359.77	7,110.00	6,605.17	951.16	6,601.30	0.00	0.00	0.00	
12,900.00	90.00	359.77	7,110.00	6,705.17	950.76	6,701.30	0.00	0.00	0.00	
13,000.00	90.00	359.77	7,110.00	6,805.17	950.35	6,801.30	0.00	0.00	0.00	
13,100.00	90.00	359.77	7,110.00	6,905.17	949.94	6,901.30	0.00	0.00	0.00	
13,200.00	90.00	359.77	7,110.00	7,005.17	949.54	7,001.30	0.00	0.00	0.00	
13,300.00	90.00	359.77	7,110.00	7,105.17	949.13	7,101.30	0.00	0.00	0.00	
13,400.00	90.00	359.77	7,110.00	7,205.17	948.72	7,201.30	0.00	0.00	0.00	
13,500.00	90.00	359.77	7,110.00	7,305.17	948.32	7,301.30	0.00	0.00	0.00	
13,600.00	90.00	359.77	7,110.00	7,405.17	947.91	7,401.30	0.00	0.00	0.00	
13,700.00	90.00	359.77	7,110.00	7,505.16	947.50	7,501.30	0.00	0.00	0.00	
13,800.00	90.00	359.77	7,110.00	7,605.16	947.10	7,601.30	0.00	0.00	0.00	
13,900.00	90.00	359.77	7,110.00	7,705.16	946.69	7,701.30	0.00	0.00	0.00	
14,000.00	90.00	359.77	7,110.00	7,805.16	946.28	7,801.30	0.00	0.00	0.00	
14,100.00	90.00	359.77	7,110.00	7,905.16	945.88	7,901.30	0.00	0.00	0.00	
14,200.00	90.00	359.77	7,110.00	8,005.16	945.47	8,001.30	0.00	0.00	0.00	
14,300.00	90.00	359.77	7,110.00	8,105.16	945.06	8,101.30	0.00	0.00	0.00	
14,400.00	90.00	359.77	7,110.00	8,205.16	944.66	8,201.30	0.00	0.00	0.00	
14,500.00	90.00	359.77	7,110.00	8,305.16	944.25	8,301.30	0.00	0.00	0.00	
14,600.00	90.00	359.77	7,110.00	8,405.16	943.85	8,401.30	0.00	0.00	0.00	
14,618.60	90.00	359.77	7,110.00	8,423.75	943.77	8,419.90	0.00	0.00	0.00	
TD Well @ 14618.60ft										

Hewlett-Packard

Planning Report

Database:	EDM 5000.14 Single User Db	Local Co-ordinate Reference:	Well ONION 1918-07H
Company:	VERDAD RESOURCES	TVD Reference:	RKB = 24' @ 5036.00usft (RIG)
Project:	WATTENBERG FIELD	MD Reference:	RKB = 24' @ 5036.00usft (RIG)
Site:	1N-64W-19 ONION 1918 PAD	North Reference:	True
Well:	ONION 1918-07H	Survey Calculation Method:	Minimum Curvature
Wellbore:	Wellbore #1		
Design:	Design #1		

Casing Points					
Measured Depth (usft)	Vertical Depth (usft)	Name		Casing Diameter (")	Hole Diameter (")
1,717.56	1,700.00	9 5/8"		9-5/8	13-1/2

Plan Annotations				
Measured Depth (usft)	Vertical Depth (usft)	Local Coordinates		Comment
		+N/-S (usft)	+E/-W (usft)	
450.00	450.00	0.00	0.00	Begin Nudge @ 450.00ft
1,021.00	1,017.23	37.06	42.93	Hold Tangent @ 1021.00ft
6,677.53	6,561.77	768.88	890.76	KOP @ 6677.53ft :: DLS = 9°/100'
7,595.33	7,110.00	1,400.54	972.32	End Build @ 7595.33ft
14,618.60	7,110.00	8,423.75	943.77	TD Well @ 14618.60ft