



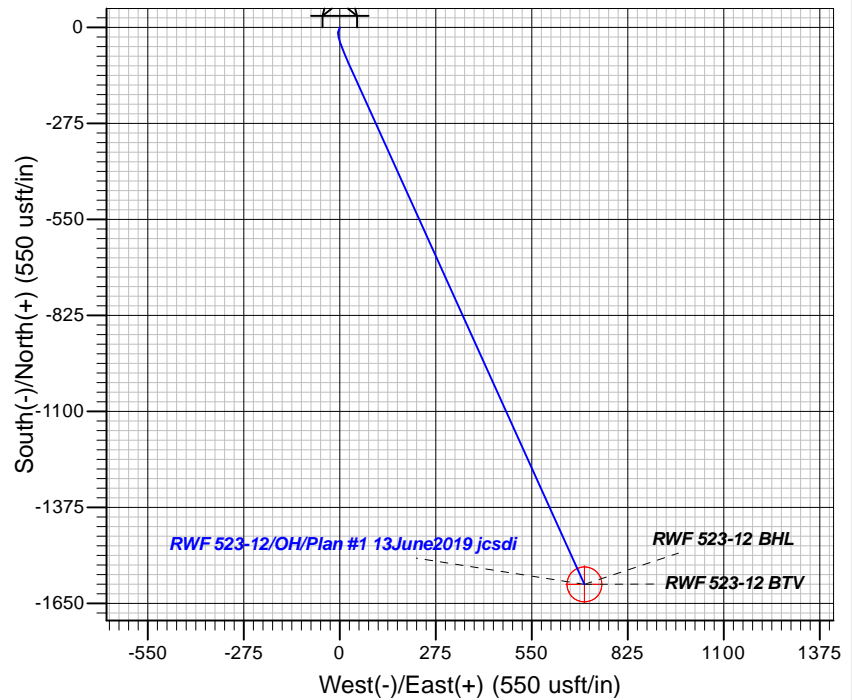
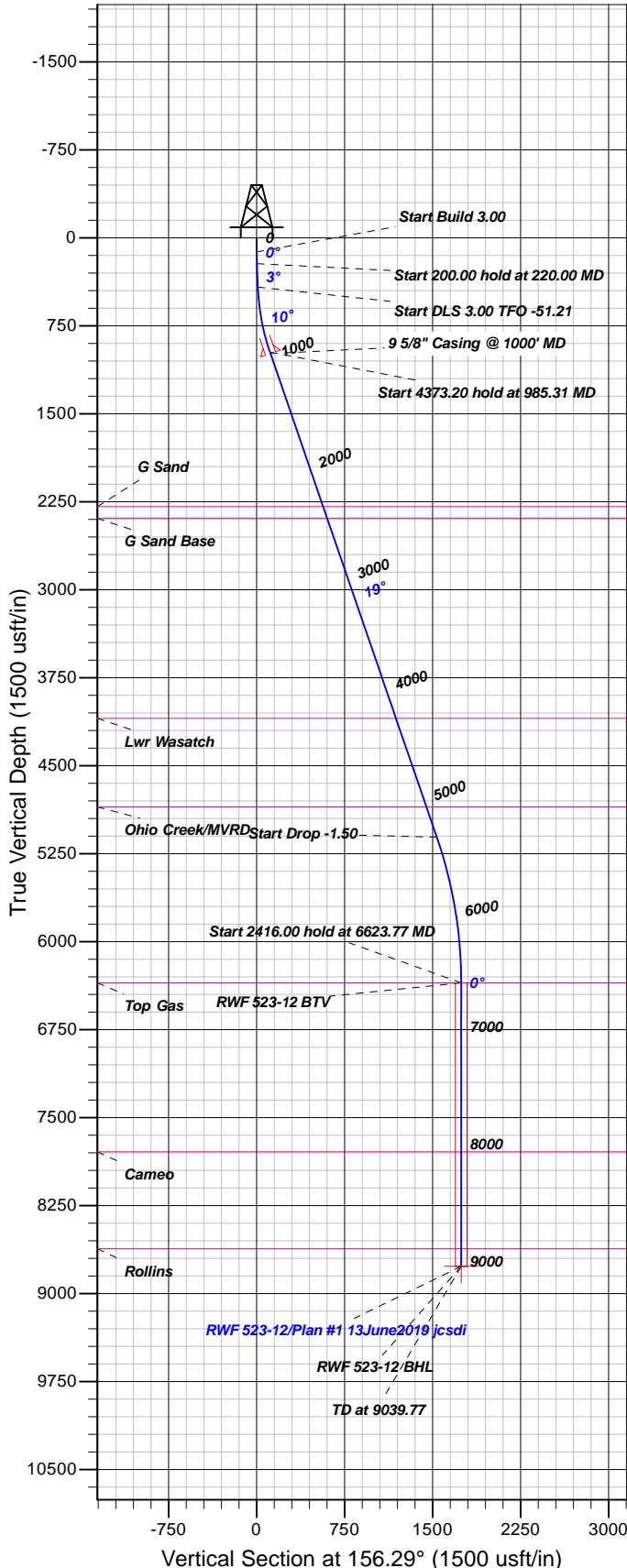
Azimuths to True North  
Magnetic North: 9.37°

Magnetic Field  
Strength: 51377.5snT  
Dip Angle: 65.62°  
Date: 6/13/2019  
Model: BGGM2016

## Well Details: RWF 523-12

GL 5466.8' & RKB 24' @ 5490.80usft (H&P 318)

+N/-S	+E/-W	Northing	Easting	Latitude	Longitude	Slot
0.00	0.00	1630801.60	2339689.70	39.5419700	-107.8416510	



## FORMATION TOP DETAILS

TVDPATH	MDPATH	FORMATION
2291.00	2378.78	G Sand
2391.00	2484.53	G Sand Base
4096.00	4287.54	Lwr Wasatch
4851.00	5085.94	Ohio Creek/MVRD
6351.00	6623.77	Top Gas
7790.00	8062.77	Cameo
8617.00	8889.77	Rollins

Plan: Plan #1 13June2019 jcsdi

16:34, June 18 2019  
Created By: Mel Mireles

PROJECT DETAILS: Garfield County, CO NAD83

Geodetic System: US State Plane 1983  
Datum: North American Datum 1983  
Ellipsoid: GRS 1980  
Zone: Colorado Central Zone

System Datum: Mean Sea Level

## CASING DETAILS

TVDP	MD	Name	Size
987.18	1000.00	5/8" Casing @ 1000' MD	9.62

## SECTION DETAILS

Sec	MD	Inc	Azi	TVD	+N/-S	+E/-W	Dleg	TFace	Vsect	Target
1	0.00	0.00	0.00	0.00	0.00	0.00	0.00	0.00	0.00	
2	120.00	0.00	0.00	120.00	0.00	0.00	0.00	0.00	0.00	
3	220.00	3.00	200.00	219.95	-2.46	-0.90	3.00	200.00	1.89	
4	420.00	3.00	200.00	419.68	-12.30	-4.48	0.00	0.00	9.46	
5	985.31	18.98	155.65	973.28	-110.66	28.61	3.00	-51.21	112.83	
6	5358.51	18.98	155.65	5108.74	-1406.40	615.04	0.00	0.00	1535.00	
7	6623.77	0.00	0.00	6351.00	-1595.57	700.66	1.50	180.00	1742.63	RWF 523-12 BTV
8	9039.77	0.00	0.00	8767.00	-1595.57	700.66	0.00	0.00	1742.63	RWF 523-12 BHL

## DESIGN TARGET DETAILS

Name	TVDP	+N/-S	+E/-W	Northing	Easting	Latitude	Longitude	Shape
RWF 523-12 BTV	6351.00	-1595.57	700.66	1629188.50	2340349.00	39.5375895	-107.8391667	Circle (Radius: 50.00)
- plan hits target center								
RWF 523-12 BHL	8767.00	-1595.57	700.66	1629188.50	2340349.00	39.5375895	-107.8391667	Point
- plan hits target center								



# **TEP Rocky Mountain LLC**

**Garfield County, CO NAD83**

**RWF 12-12 Pad**

**RWF 523-12**

**OH**

**Plan: Plan #1 13June2019 jcsdi**

## **Standard Planning Report**

**18 June, 2019**



<b>Database:</b>	Grand Junction District	<b>Local Co-ordinate Reference:</b>	Well RWF 523-12
<b>Company:</b>	TEP Rocky Mountain LLC	<b>TVD Reference:</b>	GL 5466.8' & RKB 24' @ 5490.80usft (H&P 318)
<b>Project:</b>	Garfield County, CO NAD83	<b>MD Reference:</b>	GL 5466.8' & RKB 24' @ 5490.80usft (H&P 318)
<b>Site:</b>	RWF 12-12 Pad	<b>North Reference:</b>	True
<b>Well:</b>	RWF 523-12	<b>Survey Calculation Method:</b>	Minimum Curvature
<b>Wellbore:</b>	OH		
<b>Design:</b>	Plan #1 13June2019 jcsdi		

<b>Project</b>	Garfield County, CO NAD83		
<b>Map System:</b>	US State Plane 1983	<b>System Datum:</b>	Mean Sea Level
<b>Geo Datum:</b>	North American Datum 1983		
<b>Map Zone:</b>	Colorado Central Zone		

Site		RWF 12-12 Pad			
Site Position:		Northing:	1,630,797.20 usft	Latitude:	39.5419586
From:	Map	Easting:	2,339,698.60 usft	Longitude:	-107.8416191
Position Uncertainty:	0.00 usft	Slot Radius:	13.20 in	Grid Convergence:	-1.48 °

Well	RWF 523-12					
Well Position	+N/-S	4.17 usft	Northing:	1,630,801.60 usft	Latitude:	39.5419700
	+E/-W	-9.01 usft	Easting:	2,339,689.70 usft	Longitude:	-107.8416511
Position Uncertainty		0.00 usft	Wellhead Elevation:	0.00 usft	Ground Level:	5,466.80 usft

<b>Wellbore</b>	OH				
<b>Magnetics</b>	<b>Model Name</b>	<b>Sample Date</b>	<b>Declination (°)</b>	<b>Dip Angle (°)</b>	<b>Field Strength (nT)</b>
	BGGM2016	6/13/2019	9.37	65.62	51,378

<b>Design</b>	Plan #1 13June2019 jcsdi			
<b>Audit Notes:</b>				
<b>Version:</b>	<b>Phase:</b>	PLAN	<b>Tie On Depth:</b>	0.00
<b>Vertical Section:</b>	<b>Depth From (TVD) (usft)</b>	<b>+N/-S (usft)</b>	<b>+E/-W (usft)</b>	<b>Direction (°)</b>
	0.00	0.00	0.00	156.29

<b>Plan Sections</b>										
Measured Depth (usft)	Inclination (°)	Azimuth (°)	Vertical Depth (usft)	+N/-S (usft)	+E/-W (usft)	Dogleg Rate (°/100usft)	Build Rate (°/100usft)	Turn Rate (°/100usft)	TFO (°)	Target
0.00	0.00	0.00	0.00	0.00	0.00	0.00	0.00	0.00	0.00	
120.00	0.00	0.00	120.00	0.00	0.00	0.00	0.00	0.00	0.00	
220.00	3.00	200.00	219.95	-2.46	-0.90	3.00	3.00	0.00	200.00	
420.00	3.00	200.00	419.68	-12.30	-4.48	0.00	0.00	0.00	0.00	
985.31	18.98	155.65	973.28	-110.66	28.61	3.00	2.83	-7.85	-51.21	
5,358.51	18.98	155.65	5,108.74	-1,406.40	615.04	0.00	0.00	0.00	0.00	
6,623.77	0.00	0.00	6,351.00	-1,595.57	700.66	1.50	-1.50	0.00	180.00	RWF 523-12 BTV
9,039.77	0.00	0.00	8,767.00	-1,595.57	700.66	0.00	0.00	0.00	0.00	RWF 523-12 BHL

<b>Database:</b>	Grand Junction District	<b>Local Co-ordinate Reference:</b>	Well RWF 523-12
<b>Company:</b>	TEP Rocky Mountain LLC	<b>TVD Reference:</b>	GL 5466.8' & RKB 24' @ 5490.80usft (H&P 318)
<b>Project:</b>	Garfield County, CO NAD83	<b>MD Reference:</b>	GL 5466.8' & RKB 24' @ 5490.80usft (H&P 318)
<b>Site:</b>	RWF 12-12 Pad	<b>North Reference:</b>	True
<b>Well:</b>	RWF 523-12	<b>Survey Calculation Method:</b>	Minimum Curvature
<b>Wellbore:</b>	OH		
<b>Design:</b>	Plan #1 13June2019 jcsdi		

Planned Survey										
Measured Depth (usft)	Inclination (°)	Azimuth (°)	Vertical Depth (usft)	+N/-S (usft)	+E/-W (usft)	Vertical Section (usft)	Dogleg Rate (°/100usft)	Build Rate (°/100usft)	Turn Rate (°/100usft)	
0.00	0.00	0.00	0.00	0.00	0.00	0.00	0.00	0.00	0.00	
100.00	0.00	0.00	100.00	0.00	0.00	0.00	0.00	0.00	0.00	
120.00	0.00	0.00	120.00	0.00	0.00	0.00	0.00	0.00	0.00	
Start Build 3.00										
200.00	2.40	200.00	199.98	-1.57	-0.57	1.21	3.00	3.00	0.00	
220.00	3.00	200.00	219.95	-2.46	-0.90	1.89	3.00	3.00	0.00	
Start 200.00 hold at 220.00 MD										
300.00	3.00	200.00	299.84	-6.39	-2.33	4.92	0.00	0.00	0.00	
400.00	3.00	200.00	399.71	-11.31	-4.12	8.70	0.00	0.00	0.00	
420.00	3.00	200.00	419.68	-12.30	-4.48	9.46	0.00	0.00	0.00	
Start DLS 3.00 TFO -51.21										
500.00	4.88	177.42	499.49	-17.66	-5.04	14.14	3.00	2.35	-28.22	
600.00	7.64	166.54	598.89	-28.38	-3.30	24.66	3.00	2.77	-10.88	
700.00	10.54	161.51	697.62	-43.52	1.15	40.31	3.00	2.90	-5.03	
800.00	13.48	158.64	795.43	-63.06	8.30	61.07	3.00	2.94	-2.87	
900.00	16.44	156.78	892.02	-86.93	18.13	86.88	3.00	2.96	-1.85	
985.31	18.98	155.65	973.28	-110.66	28.61	112.83	3.00	2.97	-1.33	
Start 4373.20 hold at 985.31 MD										
1,000.00	18.98	155.65	987.18	-115.02	30.58	117.61	0.00	0.00	0.00	
9 5/8" Casing @ 1000' MD										
1,100.00	18.98	155.65	1,081.74	-144.65	43.99	150.13	0.00	0.00	0.00	
1,200.00	18.98	155.65	1,176.30	-174.27	57.40	182.65	0.00	0.00	0.00	
1,300.00	18.98	155.65	1,270.87	-203.90	70.81	215.17	0.00	0.00	0.00	
1,400.00	18.98	155.65	1,365.43	-233.53	84.22	247.69	0.00	0.00	0.00	
1,500.00	18.98	155.65	1,460.00	-263.16	97.63	280.21	0.00	0.00	0.00	
1,600.00	18.98	155.65	1,554.56	-292.79	111.04	312.73	0.00	0.00	0.00	
1,700.00	18.98	155.65	1,649.12	-322.42	124.45	345.25	0.00	0.00	0.00	
1,800.00	18.98	155.65	1,743.69	-352.05	137.86	377.77	0.00	0.00	0.00	
1,900.00	18.98	155.65	1,838.25	-381.68	151.27	410.29	0.00	0.00	0.00	
2,000.00	18.98	155.65	1,932.81	-411.31	164.68	442.81	0.00	0.00	0.00	
2,100.00	18.98	155.65	2,027.38	-440.93	178.09	475.33	0.00	0.00	0.00	
2,200.00	18.98	155.65	2,121.94	-470.56	191.50	507.85	0.00	0.00	0.00	
2,300.00	18.98	155.65	2,216.51	-500.19	204.90	540.37	0.00	0.00	0.00	
2,378.78	18.98	155.65	2,291.00	-523.53	215.47	565.99	0.00	0.00	0.00	
G Sand										
2,400.00	18.98	155.65	2,311.07	-529.82	218.31	572.89	0.00	0.00	0.00	
2,484.53	18.98	155.65	2,391.00	-554.87	229.65	600.38	0.00	0.00	0.00	
G Sand Base										
2,500.00	18.98	155.65	2,405.63	-559.45	231.72	605.41	0.00	0.00	0.00	
2,600.00	18.98	155.65	2,500.20	-589.08	245.13	637.93	0.00	0.00	0.00	
2,700.00	18.98	155.65	2,594.76	-618.71	258.54	670.45	0.00	0.00	0.00	
2,800.00	18.98	155.65	2,689.32	-648.34	271.95	702.97	0.00	0.00	0.00	
2,900.00	18.98	155.65	2,783.89	-677.97	285.36	735.49	0.00	0.00	0.00	
3,000.00	18.98	155.65	2,878.45	-707.60	298.77	768.01	0.00	0.00	0.00	
3,100.00	18.98	155.65	2,973.02	-737.22	312.18	800.53	0.00	0.00	0.00	
3,200.00	18.98	155.65	3,067.58	-766.85	325.59	833.05	0.00	0.00	0.00	
3,300.00	18.98	155.65	3,162.14	-796.48	339.00	865.57	0.00	0.00	0.00	
3,400.00	18.98	155.65	3,256.71	-826.11	352.41	898.09	0.00	0.00	0.00	
3,500.00	18.98	155.65	3,351.27	-855.74	365.82	930.61	0.00	0.00	0.00	
3,600.00	18.98	155.65	3,445.83	-885.37	379.23	963.13	0.00	0.00	0.00	
3,700.00	18.98	155.65	3,540.40	-915.00	392.64	995.65	0.00	0.00	0.00	
3,800.00	18.98	155.65	3,634.96	-944.63	406.05	1,028.17	0.00	0.00	0.00	

<b>Database:</b>	Grand Junction District	<b>Local Co-ordinate Reference:</b>	Well RWF 523-12
<b>Company:</b>	TEP Rocky Mountain LLC	<b>TVD Reference:</b>	GL 5466.8' & RKB 24' @ 5490.80usft (H&P 318)
<b>Project:</b>	Garfield County, CO NAD83	<b>MD Reference:</b>	GL 5466.8' & RKB 24' @ 5490.80usft (H&P 318)
<b>Site:</b>	RWF 12-12 Pad	<b>North Reference:</b>	True
<b>Well:</b>	RWF 523-12	<b>Survey Calculation Method:</b>	Minimum Curvature
<b>Wellbore:</b>	OH		
<b>Design:</b>	Plan #1 13June2019 jcsdi		

Planned Survey									
Measured Depth (usft)	Inclination (°)	Azimuth (°)	Vertical Depth (usft)	+N/-S (usft)	+E/-W (usft)	Vertical Section (usft)	Dogleg Rate (°/100usft)	Build Rate (°/100usft)	Turn Rate (°/100usft)
3,900.00	18.98	155.65	3,729.53	-974.26	419.46	1,060.69	0.00	0.00	0.00
4,000.00	18.98	155.65	3,824.09	-1,003.89	432.87	1,093.21	0.00	0.00	0.00
4,100.00	18.98	155.65	3,918.65	-1,033.51	446.28	1,125.73	0.00	0.00	0.00
4,200.00	18.98	155.65	4,013.22	-1,063.14	459.69	1,158.25	0.00	0.00	0.00
4,287.54	18.98	155.65	4,096.00	-1,089.08	471.43	1,186.72	0.00	0.00	0.00
<b>Lwr Wasatch</b>									
4,300.00	18.98	155.65	4,107.78	-1,092.77	473.10	1,190.77	0.00	0.00	0.00
4,400.00	18.98	155.65	4,202.34	-1,122.40	486.51	1,223.29	0.00	0.00	0.00
4,500.00	18.98	155.65	4,296.91	-1,152.03	499.92	1,255.81	0.00	0.00	0.00
4,600.00	18.98	155.65	4,391.47	-1,181.66	513.33	1,288.33	0.00	0.00	0.00
4,700.00	18.98	155.65	4,486.04	-1,211.29	526.73	1,320.85	0.00	0.00	0.00
4,800.00	18.98	155.65	4,580.60	-1,240.92	540.14	1,353.37	0.00	0.00	0.00
4,900.00	18.98	155.65	4,675.16	-1,270.55	553.55	1,385.89	0.00	0.00	0.00
5,000.00	18.98	155.65	4,769.73	-1,300.17	566.96	1,418.41	0.00	0.00	0.00
5,085.94	18.98	155.65	4,851.00	-1,325.64	578.49	1,446.36	0.00	0.00	0.00
<b>Ohio Creek/MVRD</b>									
5,100.00	18.98	155.65	4,864.29	-1,329.80	580.37	1,450.93	0.00	0.00	0.00
5,200.00	18.98	155.65	4,958.85	-1,359.43	593.78	1,483.45	0.00	0.00	0.00
5,300.00	18.98	155.65	5,053.42	-1,389.06	607.19	1,515.97	0.00	0.00	0.00
5,358.51	18.98	155.65	5,108.74	-1,406.40	615.04	1,535.00	0.00	0.00	0.00
<b>Start Drop -1.50</b>									
5,400.00	18.36	155.65	5,148.05	-1,418.50	620.51	1,548.28	1.50	-1.50	0.00
5,500.00	16.86	155.65	5,243.37	-1,446.05	632.99	1,578.52	1.50	-1.50	0.00
5,600.00	15.36	155.65	5,339.44	-1,471.33	644.42	1,606.26	1.50	-1.50	0.00
5,700.00	13.86	155.65	5,436.21	-1,494.30	654.82	1,631.48	1.50	-1.50	0.00
5,800.00	12.36	155.65	5,533.60	-1,514.96	664.17	1,654.15	1.50	-1.50	0.00
5,900.00	10.86	155.65	5,631.55	-1,533.29	672.47	1,674.27	1.50	-1.50	0.00
6,000.00	9.36	155.65	5,730.00	-1,549.27	679.70	1,691.82	1.50	-1.50	0.00
6,100.00	7.86	155.65	5,828.87	-1,562.91	685.87	1,706.78	1.50	-1.50	0.00
6,200.00	6.36	155.65	5,928.10	-1,574.18	690.97	1,719.15	1.50	-1.50	0.00
6,300.00	4.86	155.65	6,027.61	-1,583.08	695.00	1,728.92	1.50	-1.50	0.00
6,400.00	3.36	155.65	6,127.35	-1,589.60	697.95	1,736.08	1.50	-1.50	0.00
6,500.00	1.86	155.65	6,227.25	-1,593.75	699.83	1,740.63	1.50	-1.50	0.00
6,600.00	0.36	155.65	6,327.23	-1,595.50	700.63	1,742.56	1.50	-1.50	0.00
6,623.77	0.00	0.00	6,351.00	-1,595.57	700.66	1,742.63	1.50	-1.50	0.00
<b>Start 2416.00 hold at 6623.77 MD - Top Gas - RWF 523-12 BTV</b>									
6,700.00	0.00	0.00	6,427.23	-1,595.57	700.66	1,742.63	0.00	0.00	0.00
6,800.00	0.00	0.00	6,527.23	-1,595.57	700.66	1,742.63	0.00	0.00	0.00
6,900.00	0.00	0.00	6,627.23	-1,595.57	700.66	1,742.63	0.00	0.00	0.00
7,000.00	0.00	0.00	6,727.23	-1,595.57	700.66	1,742.63	0.00	0.00	0.00
7,100.00	0.00	0.00	6,827.23	-1,595.57	700.66	1,742.63	0.00	0.00	0.00
7,200.00	0.00	0.00	6,927.23	-1,595.57	700.66	1,742.63	0.00	0.00	0.00
7,300.00	0.00	0.00	7,027.23	-1,595.57	700.66	1,742.63	0.00	0.00	0.00
7,400.00	0.00	0.00	7,127.23	-1,595.57	700.66	1,742.63	0.00	0.00	0.00
7,500.00	0.00	0.00	7,227.23	-1,595.57	700.66	1,742.63	0.00	0.00	0.00
7,600.00	0.00	0.00	7,327.23	-1,595.57	700.66	1,742.63	0.00	0.00	0.00
7,700.00	0.00	0.00	7,427.23	-1,595.57	700.66	1,742.63	0.00	0.00	0.00
7,800.00	0.00	0.00	7,527.23	-1,595.57	700.66	1,742.63	0.00	0.00	0.00
7,900.00	0.00	0.00	7,627.23	-1,595.57	700.66	1,742.63	0.00	0.00	0.00
8,000.00	0.00	0.00	7,727.23	-1,595.57	700.66	1,742.63	0.00	0.00	0.00
8,062.77	0.00	0.00	7,790.00	-1,595.57	700.66	1,742.63	0.00	0.00	0.00

<b>Database:</b>	Grand Junction District	<b>Local Co-ordinate Reference:</b>	Well RWF 523-12
<b>Company:</b>	TEP Rocky Mountain LLC	<b>TVD Reference:</b>	GL 5466.8' & RKB 24' @ 5490.80usft (H&P 318)
<b>Project:</b>	Garfield County, CO NAD83	<b>MD Reference:</b>	GL 5466.8' & RKB 24' @ 5490.80usft (H&P 318)
<b>Site:</b>	RWF 12-12 Pad	<b>North Reference:</b>	True
<b>Well:</b>	RWF 523-12	<b>Survey Calculation Method:</b>	Minimum Curvature
<b>Wellbore:</b>	OH		
<b>Design:</b>	Plan #1 13June2019 jcsdi		

Planned Survey									
Measured Depth (usft)	Inclination (°)	Azimuth (°)	Vertical Depth (usft)	+N/-S (usft)	+E/-W (usft)	Vertical Section (usft)	Dogleg Rate (°/100usft)	Build Rate (°/100usft)	Turn Rate (°/100usft)
<b>Cameo</b>									
8,100.00	0.00	0.00	7,827.23	-1,595.57	700.66	1,742.63	0.00	0.00	0.00
8,200.00	0.00	0.00	7,927.23	-1,595.57	700.66	1,742.63	0.00	0.00	0.00
8,300.00	0.00	0.00	8,027.23	-1,595.57	700.66	1,742.63	0.00	0.00	0.00
8,400.00	0.00	0.00	8,127.23	-1,595.57	700.66	1,742.63	0.00	0.00	0.00
8,500.00	0.00	0.00	8,227.23	-1,595.57	700.66	1,742.63	0.00	0.00	0.00
8,600.00	0.00	0.00	8,327.23	-1,595.57	700.66	1,742.63	0.00	0.00	0.00
8,700.00	0.00	0.00	8,427.23	-1,595.57	700.66	1,742.63	0.00	0.00	0.00
8,800.00	0.00	0.00	8,527.23	-1,595.57	700.66	1,742.63	0.00	0.00	0.00
8,889.77	0.00	0.00	8,617.00	-1,595.57	700.66	1,742.63	0.00	0.00	0.00
<b>Rollins</b>									
8,900.00	0.00	0.00	8,627.23	-1,595.57	700.66	1,742.63	0.00	0.00	0.00
9,000.00	0.00	0.00	8,727.23	-1,595.57	700.66	1,742.63	0.00	0.00	0.00
9,039.77	0.00	0.00	8,767.00	-1,595.57	700.66	1,742.63	0.00	0.00	0.00
<b>TD at 9039.77 - RWF 523-12 BHL</b>									

Design Targets									
Target Name	Dip Angle (°)	Dip Dir. (°)	TVD (usft)	+N/-S (usft)	+E/-W (usft)	Northing (usft)	Easting (usft)	Latitude	Longitude
- hit/miss target									
- Shape									
RWF 523-12 BTV	0.00	0.00	6,351.00	-1,595.57	700.66	1,629,188.50	2,340,349.00	39.5375895	-107.8391668
- plan hits target center									
- Circle (radius 50.00)									
RWF 523-12 BHL	0.00	0.00	8,767.00	-1,595.57	700.66	1,629,188.50	2,340,349.00	39.5375895	-107.8391668
- plan hits target center									
- Point									

Casing Points					
Measured Depth (usft)	Vertical Depth (usft)	Name	Casing Diameter (in)	Hole Diameter (in)	
1,000.00	987.18	9 5/8" Casing @ 1000' MD	9.62	12.25	

Formations					
Measured Depth (usft)	Vertical Depth (usft)	Name	Lithology	Dip (°)	Dip Direction (°)
2,378.78	2,291.00	G Sand		0.00	0.00
2,484.53	2,391.00	G Sand Base		0.00	0.00
4,287.54	4,096.00	Lwr Wasatch		0.00	0.00
5,085.94	4,851.00	Ohio Creek/MVRD		0.00	0.00
6,623.77	6,351.00	Top Gas		0.00	0.00
8,062.77	7,790.00	Cameo		0.00	0.00
8,889.77	8,617.00	Rollins		0.00	0.00

<b>Database:</b>	Grand Junction District	<b>Local Co-ordinate Reference:</b>	Well RWF 523-12
<b>Company:</b>	TEP Rocky Mountain LLC	<b>TVD Reference:</b>	GL 5466.8' & RKB 24' @ 5490.80usft (H&P 318)
<b>Project:</b>	Garfield County, CO NAD83	<b>MD Reference:</b>	GL 5466.8' & RKB 24' @ 5490.80usft (H&P 318)
<b>Site:</b>	RWF 12-12 Pad	<b>North Reference:</b>	True
<b>Well:</b>	RWF 523-12	<b>Survey Calculation Method:</b>	Minimum Curvature
<b>Wellbore:</b>	OH		
<b>Design:</b>	Plan #1 13June2019 jcsdi		

Plan Annotations				
Measured Depth (usft)	Vertical Depth (usft)	Local Coordinates		Comment
		+N/-S (usft)	+E/-W (usft)	
120.00	120.00	0.00	0.00	Start Build 3.00
220.00	219.95	-2.46	-0.90	Start 200.00 hold at 220.00 MD
420.00	419.68	-12.30	-4.48	Start DLS 3.00 TFO -51.21
985.31	973.28	-110.66	28.61	Start 4373.20 hold at 985.31 MD
5,358.51	5,108.74	-1,406.40	615.04	Start Drop -1.50
6,623.77	6,351.00	-1,595.57	700.66	Start 2416.00 hold at 6623.77 MD
9,039.77	8,767.00	-1,595.57	700.66	TD at 9039.77