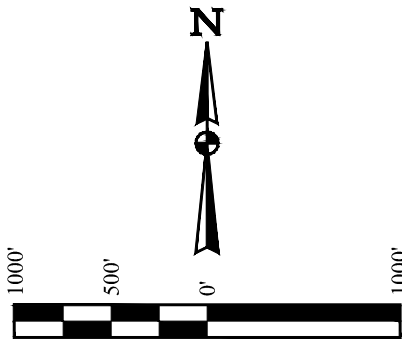


T8N, R60W, 6th P.M.

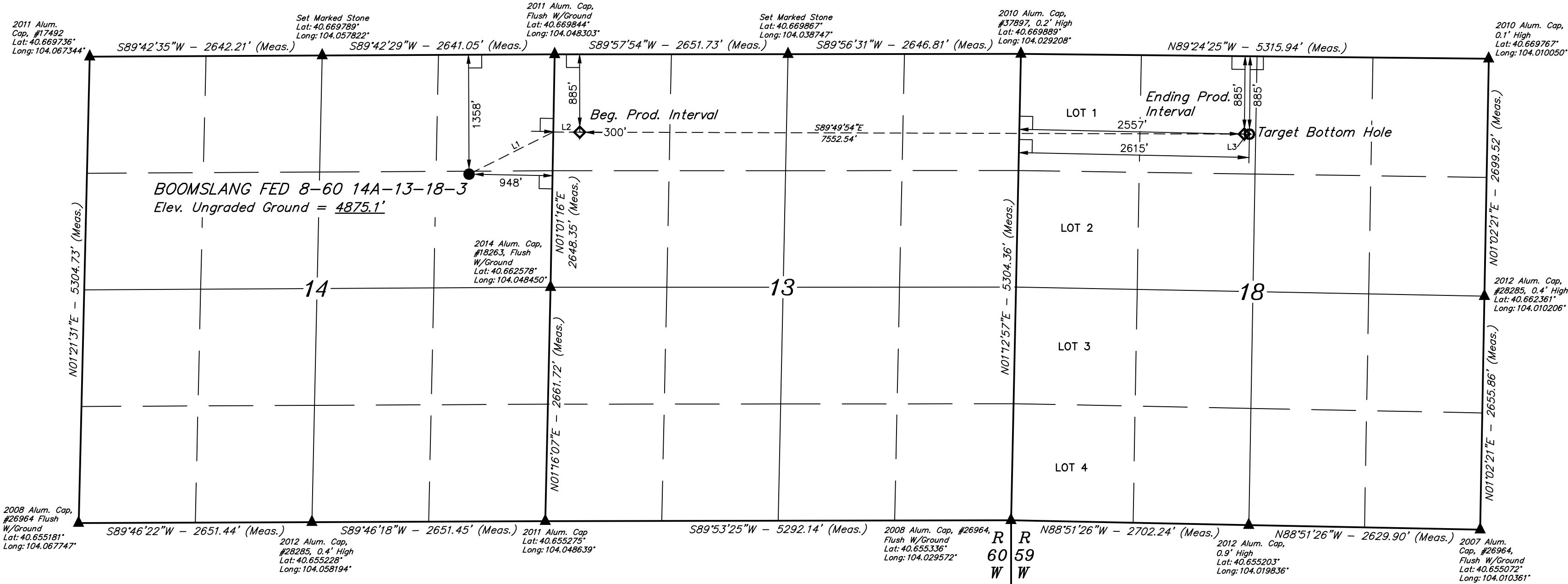
BISON OIL & GAS II
BOOMSLANG FED 8-60 14A-13-18-3
SE 1/4 NE 1/4, SECTION 14, T8N, R60W, 6th P.M.
WELD COUNTY, COLORADO

BASIS OF BEARINGS
BASIS OF ELEVATION

SPOT ELEVATION LOCATED AT THE NORTHEAST CORNER OF SECTION 15, T9N, R58W, 6th P.M., TAKEN FROM THE GROVER SE, QUADRANGLE, COLORADO, WELD COUNTY, 7.5 MINUTE QUAD (TOPOGRAPHICAL MAP) PUBLISHED BY THE UNITED STATES DEPARTMENT OF THE INTERIOR, GEOLOGICAL SURVEY. SAID ELEVATION IS MARKED AS BEING 4600 FEET.



LINE TABLE		
LINE	DIRECTION	LENGTH
L1	N63°24'12"E	1069.99'
L2	S89°49'54"E	300.03'
L3	S89°24'25"E	58.00'



- LEGEND:
- 90° SYMBOL
 - PROPOSED WELLHEAD.
 - PRODUCTION INTERVAL.
 - TARGET BOTTOM HOLE.
 - SECTION CORNERS LOCATED. (NAD 83)

REV: 2 05-20-19 C.VIE (LATERAL CHANGE)

SURFACE LOCATION	BEG. PROD. INTERVAL	ENDING PROD. INTERVAL	TARGET BOTTOM HOLE
1358' ENL 948' FWL	885' ENL 300' FWL	885' ENL 2557' FWL	885' ENL 2615' FWL
NAD 83 (SURFACE LOCATION)	NAD 83 (BEG. PROD. INTERVAL)	NAD 83 (ENDING PROD. INTERVAL)	NAD 83 (TARGET BOTTOM HOLE)
LATITUDE = 40°39'57.95" (40.666098)	LATITUDE = 40°40'02.71" (40.667418)	LATITUDE = 40°40'02.65" (40.667403)	LATITUDE = 40°40'02.64" (40.667401)
LONGITUDE = 104°03'06.47" (104.051796)	LONGITUDE = 104°02'50.18" (104.047271)	LONGITUDE = 104°01'12.19" (104.020052)	LONGITUDE = 104°01'11.44" (104.019843)
NAD 27 (SURFACE LOCATION)	NAD 27 (BEG. PROD. INTERVAL)	NAD 27 (ENDING PROD. INTERVAL)	NAD 27 (TARGET BOTTOM HOLE)
LATITUDE = 40°39'58.00" (40.666111)	LATITUDE = 40°40'02.75" (40.667431)	LATITUDE = 40°40'02.70" (40.667415)	LATITUDE = 40°40'02.69" (40.667414)
LONGITUDE = 104°03'04.65" (104.051291)	LONGITUDE = 104°02'48.36" (104.046766)	LONGITUDE = 104°01'10.37" (104.019548)	LONGITUDE = 104°01'09.62" (104.019339)
STATE PLANE NAD 83 (CO. NORTH)	STATE PLANE NAD 83 (CO. NORTH)	STATE PLANE NAD 83 (CO. NORTH)	STATE PLANE NAD 83 (CO. NORTH)
N: 1488782.74 E: 3401738.70	N: 1489284.23 E: 3402986.03	N: 1489403.46 E: 3410535.81	N: 1489403.95 E: 3410593.80
STATE PLANE NAD 27 (CO. NORTH)	STATE PLANE NAD 27 (CO. NORTH)	STATE PLANE NAD 27 (CO. NORTH)	STATE PLANE NAD 27 (CO. NORTH)
N: 488781.32 E: 2401889.33	N: 489282.79 E: 2403136.68	N: 489401.91 E: 2410686.70	N: 489402.40 E: 2410744.68

CERTIFICATE OF REGISTRATION
THIS IS TO CERTIFY THAT THE ABOVE DESCRIBED WORK WAS PREPARED AND DONE IN ACCORDANCE WITH THE RULES AND REGULATIONS OF THE BOARD OF SURVEYING AND MAPPING, STATE OF COLORADO, AND THAT THE SAME ARE TRUE AND CORRECT TO THE BEST OF MY KNOWLEDGE AND BELIEF.

REGISTERED LAND SURVEYOR
REGISTRATION NO. 28285
STATE OF COLORADO
195-10-19

UINTEAH
ENGINEERING & LAND SURVEYING

UELS, LLC
Corporate Office * 85 South 200 East
Vernal, UT 84078 * (435) 789-1017

SURVEYED BY RYAN WILLIAMS 03-06-19
DRAWN BY J.J. 08-17-17

SCALE
1" = 1000'

WELL LOCATION PLAT