

Champlin #86 Amoco F #2

General Location:

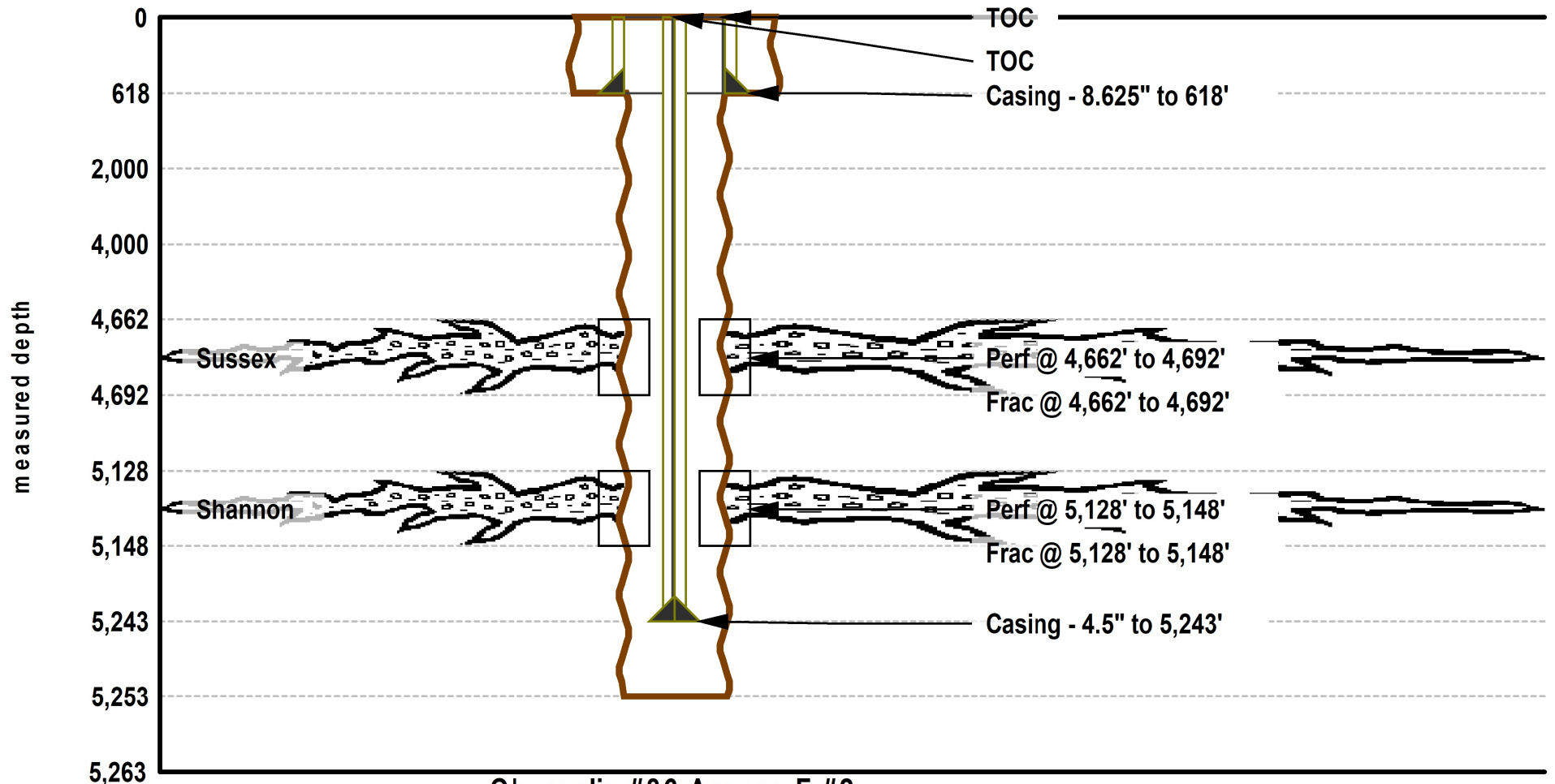
Nese-4-1N-68W

Latitude/Longitude: N40.07856400, W -105.00130300:

County: Weld, State: CO

Spud Date: 11/17/1981

Total Depth: 5253



Champlin #86 Amoco F #2

Initial Completion: 3/2/1983

Proposed Depth: 0 Plug Back Depth: 5207