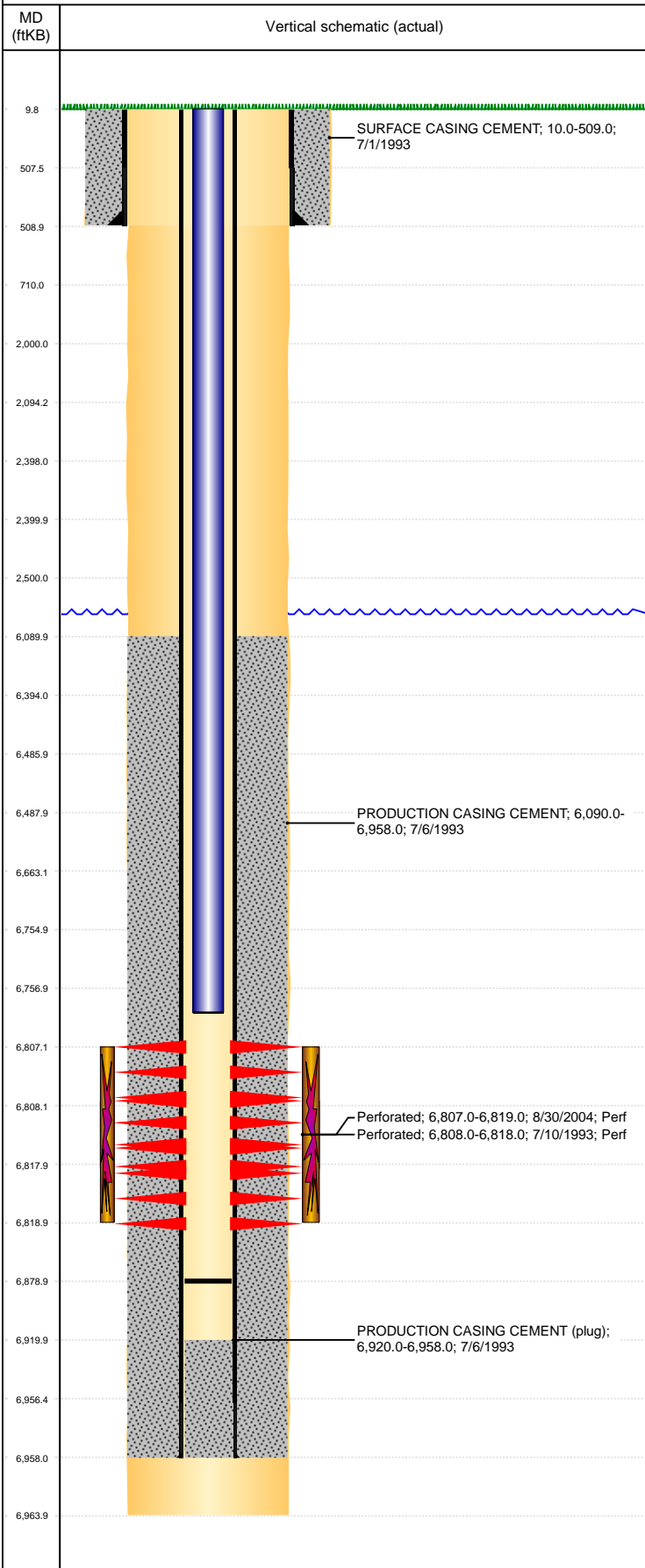


Well Name: SPIKE STATE CC30-16

VERTICAL, ORIGINAL HOLE, 7/16/2019 11:47:18 AM



Well Header									
API 05-123-15831		Business Unit DJ BASIN		District 15		Well Config VERTICAL			
KB - GL / MSL (ft... 10.00		Spud Date 7/1/1993		P & A Date		Well Production Status PR		SoRT No	
Comment DISCREPANCY: PROD CSG WEIGHT - ST 8.7#, '97 DRL RPTS 6.4# & 6.5#, NEWER DRL RPTS 6.5#, USED 6.5#. CD REPERF- 88 HOLES RPTD TO ST, ONLY 48 HOLES. FIELD OPS NOTICE- FLOWLINES ABANDONED PER RULE 1103, RCVD 7/2/17. STATE SHOWS SHUT IN SINCE JAN 2017.									
Surface Location (Congressional)									
Qtr 3 SE	Qtr 4 SE	Section 30	Twonshp 4	Twonsh... N	Range 63	Rng E/... W	Actual Latitude (°) 40.27785661	Actual Longitude (°) -104.47366658	
Wellbore Sections									
Section Des		Size (in)		Act Top, MD (ftKB)		Act Btm, MD (ftKB)			
SURFACE		12 1/4		10		509			
PRODUCTION		7 7/8		509		6,964			
Casing Strings									
Csg Des		Run Date	OD (in)	Wt/Len (lb/ft)	Grade	Top, MD (ftKB)	MD (ftKB)		
Surface		7/1/1993	8 5/8	24.00		10.0	509.0		
Production		7/6/1993	2 7/8	6.50	N-80	10.0	6,958.0		
Cement									
Des		Start Date	Top (ftKB)	Btm (ftKB)					
SURFACE CASING CEMENT		7/1/1993	10.0	509.0					
PRODUCTION CASING CEMENT		7/6/1993	6,090.0	6,958.0					
Zone Statuses									
Zone Name	Status Date	Status	Fluid Type	Job			Prod Method		
CODELL	10/18/2004	PR		RE-FRAC, 8/26/2004 00:00					
CODELL	6/15/2009	PR	Water				Flowing		
Perforation Data									
Linked Zone	Bnch/Stg	Entered Shot Total	Top (ftKB)	Btm (ftKB)	Date				
CODELL, ORIGINAL HOLE		48	6,807.00	6,819.00	8/30/2004				
CODELL, ORIGINAL HOLE		40	6,808.00	6,818.00	7/10/1993				
Stimulation Intervals									
Zone		Start Date	Top (ftKB)	Btm (ftKB)					
CODELL, ORIGINAL HOLE		9/3/2004	6,807.0	6,819.0					
CODELL, ORIGINAL HOLE		7/12/1993	6,808.0	6,818.0					
Other In Hole									
Run Date	Des		OD (in)	Top (ftKB)	Btm (ftKB)				
4/20/2018	Plunger Lift		0.0						
Logs									
Date	Type			Top, MD (ftKB)	Btm, MD (ftKB)				
7/6/1993	COMPENSATED DENSITY			1.0	10.0				
7/10/1993	CEMENT BOND			6,000.0	6,912.0				
3/19/2014	GYRO			10.0	6,650.0				
Plug Back Total Depths									
Date	Type	Com			Depth (ftKB)				
9/8/2004	FILL	CLEAN OUT TO LAND TBG			6,899.0				
7/18/2006	FILL	CLEAN OUT TO LAND TBG FOR TBG REPAIR			6,879.0				