

SCALE: 1" = 1000'

0' 500' 1000'

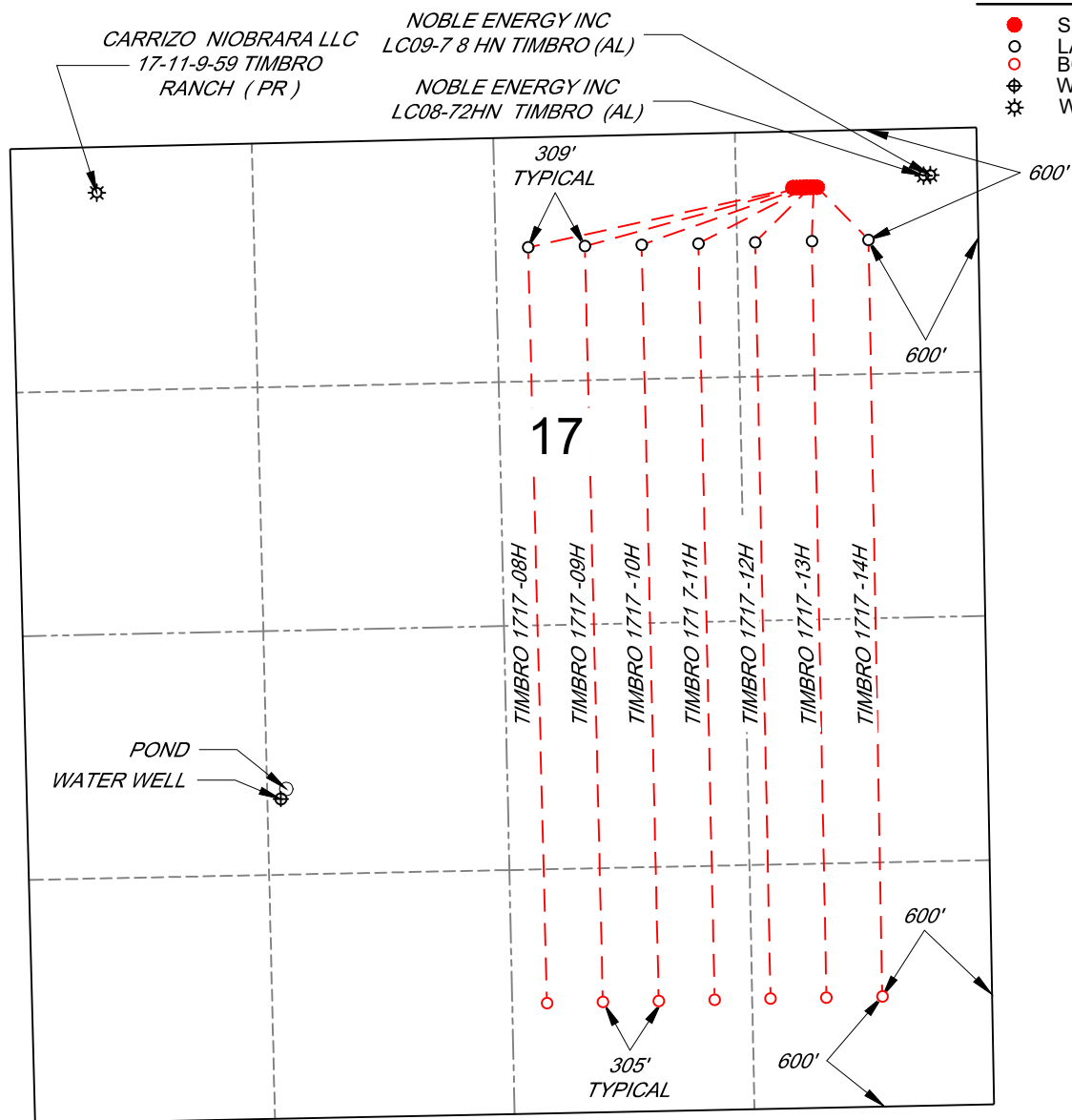
# MULTI-WELL PLAN

SHL NE/4 NE/4, SECTION 17, TOWNSHIP 9-N, RANGE 59-W  
 LP N/2 NE/4, SECTION 17, TOWNSHIP 9-N, RANGE 59-W  
 BHL S/2 SE/4, SECTION 17, TOWNSHIP 9-N, RANGE 59-W  
 WELD COUNTY, COLORADO



## LEGEND

- SURFACE HOLE LOCATION
- LANDING POINT
- BOTTOM HOLE LOCATION
- ⊕ WATER WELL
- ⊗ WELLHEAD



VERDAD RESOURCES  
**TIMBRO 1717 08H-14H**  
**JOB NO. 116051**

|                             |            |           |      |
|-----------------------------|------------|-----------|------|
| JLS                         | 03/30/2018 | REVISION: |      |
| SHEET :                     | 1 OF 1     | INT       | DATE |
| FILE:CD_TIMBRO_1717_08H-14H |            |           |      |

