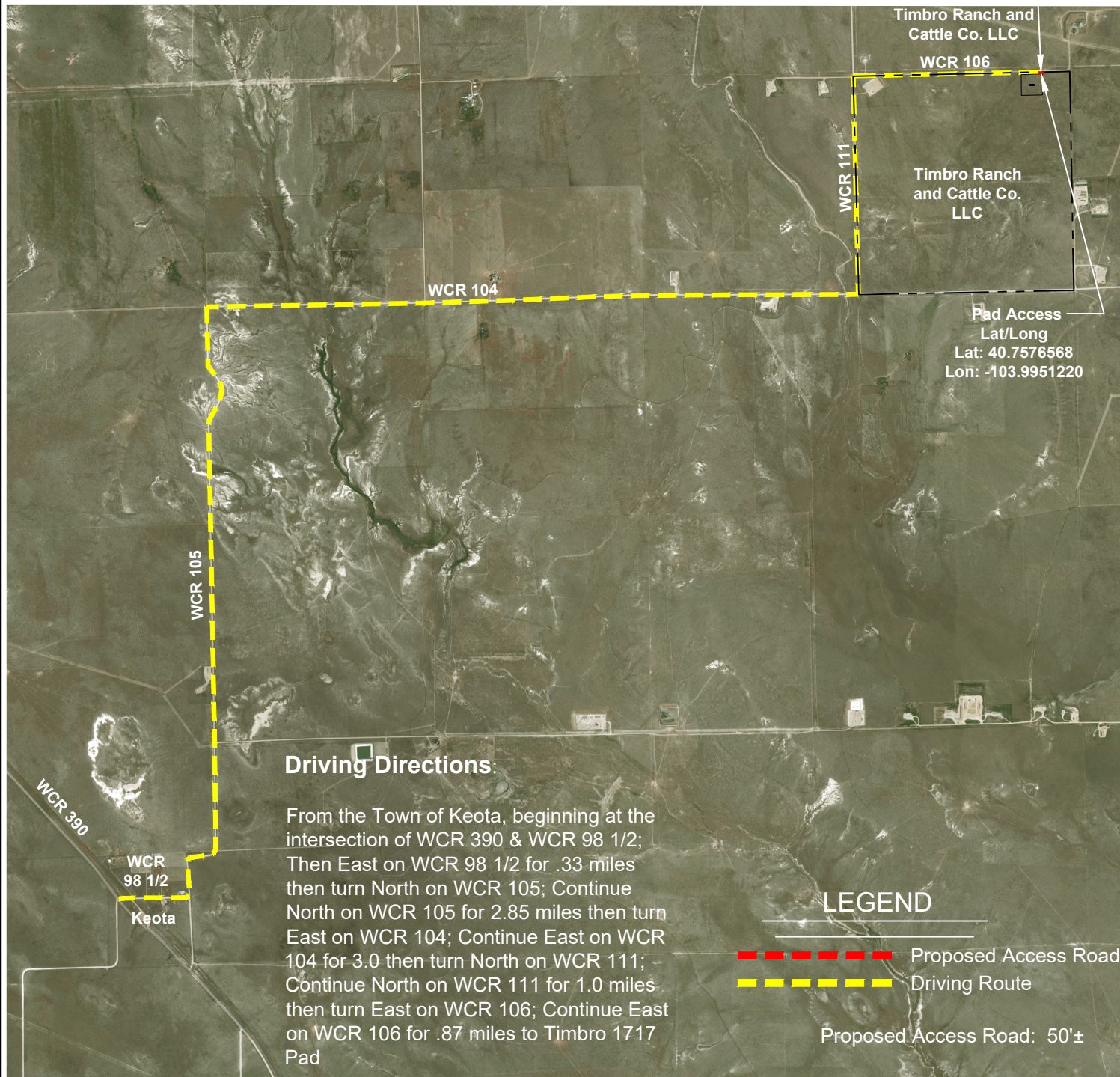




SCALE: 1" = 3500'  
0' 1750' 3500'

# ACCESS ROAD MAP

NE 1/4 NE 1/4 SECTION 17  
T9N R59W 6TH PM  
WELD COUNTY, COLORADO



## Driving Directions

From the Town of Keota, beginning at the intersection of WCR 390 & WCR 98 1/2; Then East on WCR 98 1/2 for .33 miles then turn North on WCR 105; Continue North on WCR 105 for 2.85 miles then turn East on WCR 104; Continue East on WCR 104 for 3.0 then turn North on WCR 111; Continue North on WCR 111 for 1.0 miles then turn East on WCR 106; Continue East on WCR 106 for .87 miles to Timbro 1717 Pad

## LEGEND

- Proposed Access Road
- Driving Route

Proposed Access Road: 50'±

VERDAD RESOURCES  
TIMBRO 1717

MAPP	April 18, 2018	REVISION:	
SHEET :	1 OF 1	INT	DATE
FILE: F2A_TIMBRO_1717_ACCESS			

