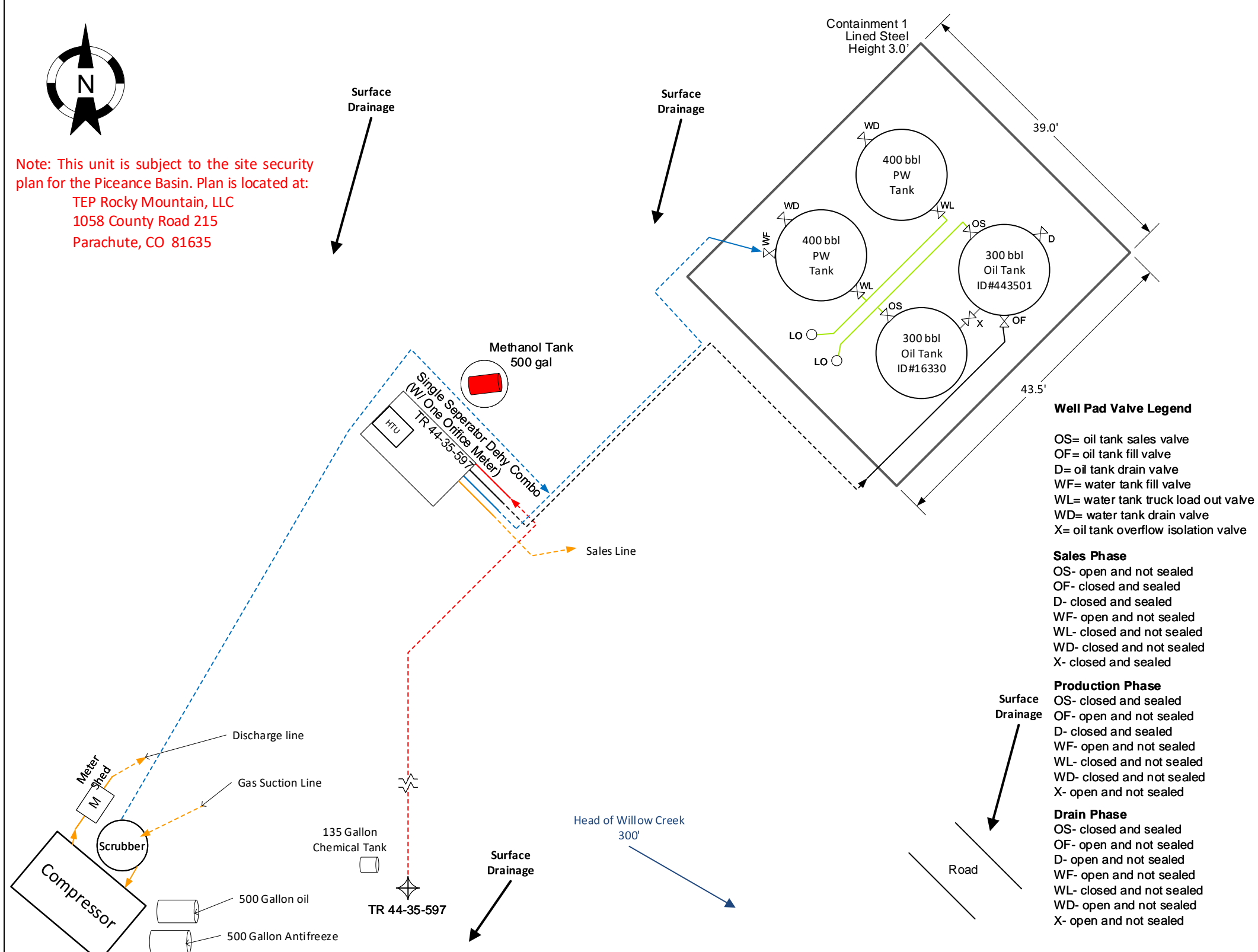




Note: This unit is subject to the site security plan for the Piceance Basin. Plan is located at:
 TEP Rocky Mountain, LLC
 1058 County Road 215
 Parachute, CO 81635

Surface Drainage

Surface Drainage



Well Pad Valve Legend

OS= oil tank sales valve
 OF= oil tank fill valve
 D= oil tank drain valve
 WF= water tank fill valve
 WL= water tank truck load out valve
 WD= water tank drain valve
 X= oil tank overflow isolation valve

Sales Phase

OS- open and not sealed
 OF- closed and sealed
 D- closed and sealed
 WF- open and not sealed
 WL- closed and not sealed
 WD- closed and not sealed
 X- closed and sealed

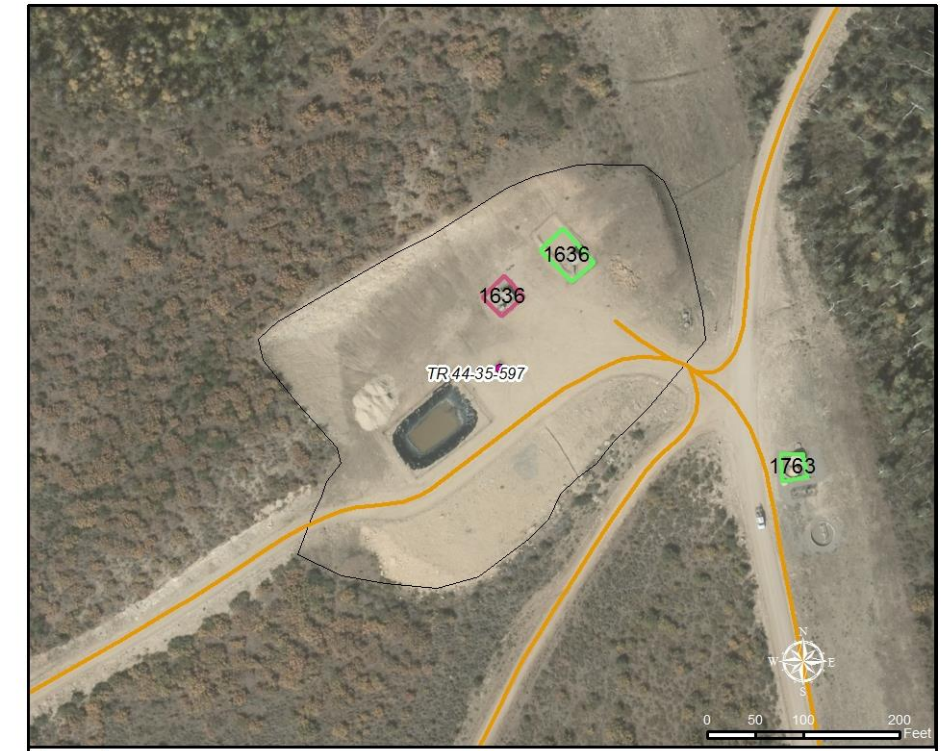
Production Phase

OS- closed and sealed
 OF- open and not sealed
 D- closed and sealed
 WF- open and not sealed
 WL- closed and not sealed
 WD- closed and not sealed
 X- open and not sealed

Drain Phase

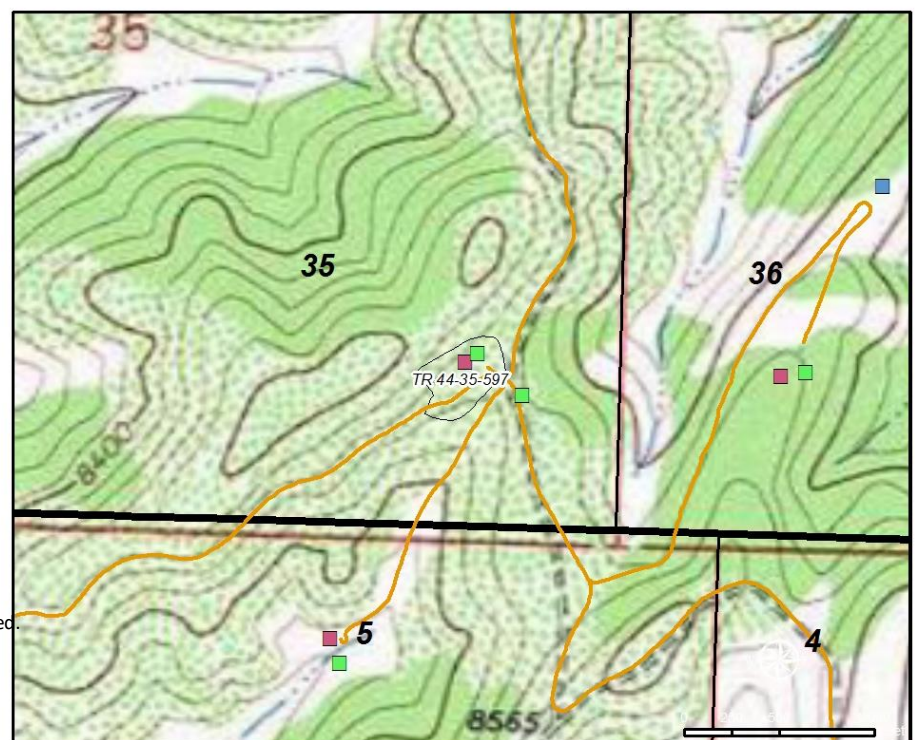
OS- closed and sealed
 OF- open and not sealed
 D- open and not sealed
 WF- open and not sealed
 WL- closed and not sealed
 WD- open and not sealed
 X- open and not sealed

Note: Some measurements on drawing are estimates and not field verified



Legend

	Sep, DeHy and Tanks		TEP Producing Well	TEP Rocky Mountain, LLC
	Separators Only		Existing Road	SPCC Facility Location Map
	Separators and DeHy		Existing Pad	TR 44-35-597
	Separators and Tanks			
	Tanks Only			



Legend

	Sep, DeHy and Tanks		TEP Producing Well	Willi
	Separators Only		Existing Road	SPCC Facility Location Map
	Separators and DeHy		Existing Pad	TR 44-35-597
	Separators and Tanks			
	Tanks Only			

Facility Diagram
 TEP Rocky Mountain, LLC
 North Grand Valley
 TR 44-35-597 Pad &
 Trail Ridge Compressor Station
 Latitude: 39.565347 Longitude: -108.238752
 SE/SE, Sec.35, T5S, R97W
 COC# NONE
 Garfield County, CO

DRAWN BY: DHR
 DATE: 7/11/19
 SCALE: 1:180

Legend

	Water Dump Line		Oil Dump Line 4
	Flowline		Gas Sales Line
	Oil Dump Line		Overflow Line
	Oil Dump Line 2		Vent Line
	Oil Dump Line 3		Manifold Line
			Load Line

Valve
 Load Out Valve
 Well Head

Dotted lines denote underground pipes.
 All lines denote 2" steel pipe, unless otherwise noted. Valves on separator no shown.