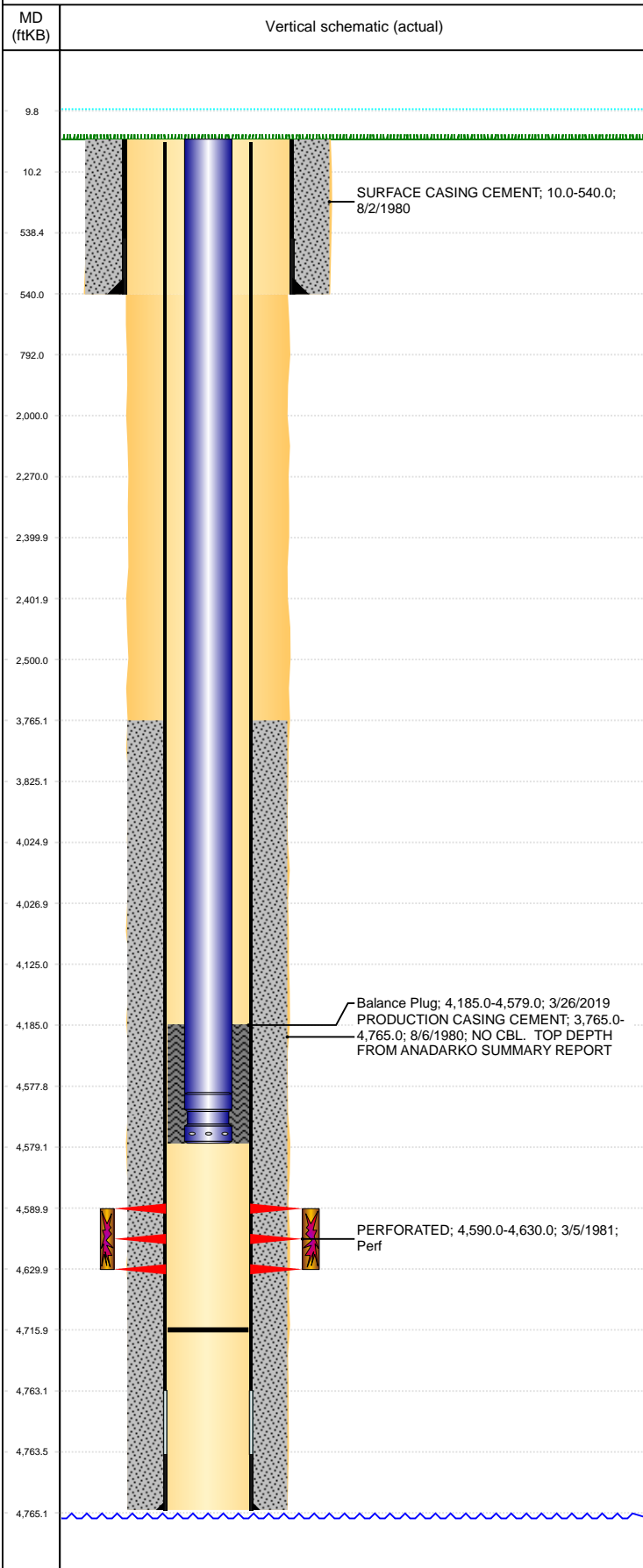


Well Name: MARSHALL CLYDE 1

VERTICAL, ORIGINAL HOLE, 7/15/2019 2:35:56 PM



Well Header									
API 05-123-10015		Business Unit DJ BASIN		District 15		Well Config VERTICAL			
KB - GL / MSL (ft... 10.00		Spud Date 8/1/1980		P & A Date		Well Production Status TA			SoRT Yes
Comment VERY LITTLE DATA. ANADARKO REPORTS STATE WELL IS ABANDONED. HOWEVER, COGIS SHOWS IT PRODUCING AS OF 10/1/14. ALSO, THERE IS NO DATA OF ABANDONMENT IN WELL FILE. DELETED SHUT-IN COLUMN IN ZONE STATUS TABLE									
Surface Location (Congressional)									
Qtr 3 NE	Qtr 4 SW	Section 32	Twnshp 4	Twnsh... N	Range 65	Rng E/... W	Actual Latitude (°) 40.26669870		Actual Longitude (°) -104.68981490
Wellbore Sections									
Section Des			Size (in)			Act Top, MD (ftKB)		Act Btm, MD (ftKB)	
SURFACE			12 1/4			10		540	
PRODUCTION			7 7/8			540		4,765	
Casing Strings									
Csg Des			Run Date	OD (in)	Wt/Len (lb/ft)	Grade	Top, MD (ftKB)	MD (ftKB)	
Surface			8/1/1980	8 5/8	24.00	J-55	10.0	540.0	
Production			8/5/1980	4 1/2	10.50	J-55	10.0	4,765.0	
Cement									
Des				Start Date		Top (ftKB)		Btm (ftKB)	
SURFACE CASING CEMENT				8/2/1980		10.0		540.0	
PRODUCTION CASING CEMENT				8/6/1980		3,765.0		4,765.0	
Balance Plug				3/26/2019		4,185.0		4,579.0	
Zone Statuses									
Zone Name		Status Date	Status	Fluid Type	Job			Prod Method	
SUSSEX		10/1/2014	PR		RECOMPLETION, 3/5/1981 00:00			Flowing	
SUSSEX		3/26/2019	TA		PLUG AND ABANDON, 3/26/2019 11:00				
Perforation Data									
Linked Zone			Bnch/Stg	Entered Shot Total	Top (ftKB)		Btm (ftKB)		Date
SUSSEX, ORIGINAL HOLE				160	4,590.01		4,630.01		3/5/1981
Stimulation Intervals									
Zone				Start Date		Top (ftKB)		Btm (ftKB)	
SUSSEX, ORIGINAL HOLE				3/5/1981		4,590.0		4,630.0	
Other In Hole									
Run Date		Des				OD (in)	Top (ftKB)	Btm (ftKB)	
Logs									
Date		Type				Top, MD (ftKB)		Btm, MD (ftKB)	
8/4/1980		COMPENSATED DENSITY				4,000.0		4,761.0	
8/4/1980		INDUCTION				541.0		4,761.0	
Plug Back Total Depths									
Date		Type		Com				Depth (ftKB)	
8/5/1980		FLOAT COLLAR		TOP OF FLOAT COLLAR				4,753.5	
6/21/1995		FILL		MOST RECENT TAG				4,716.0	