

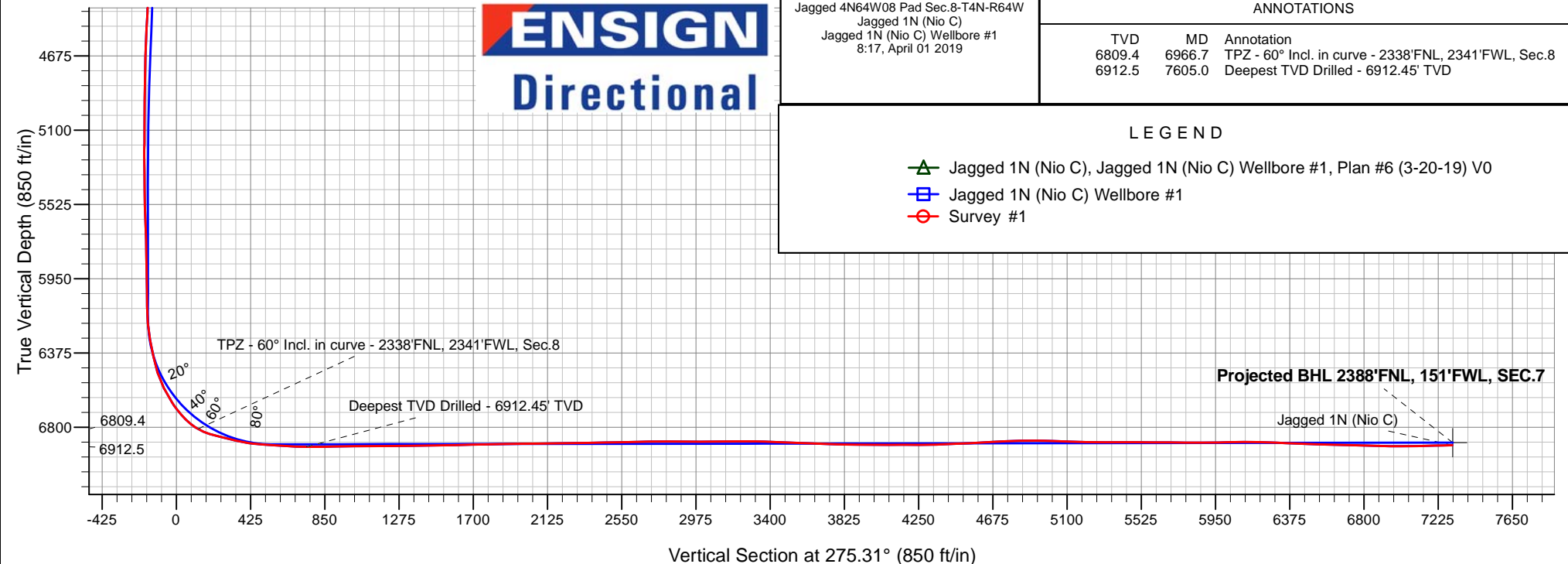
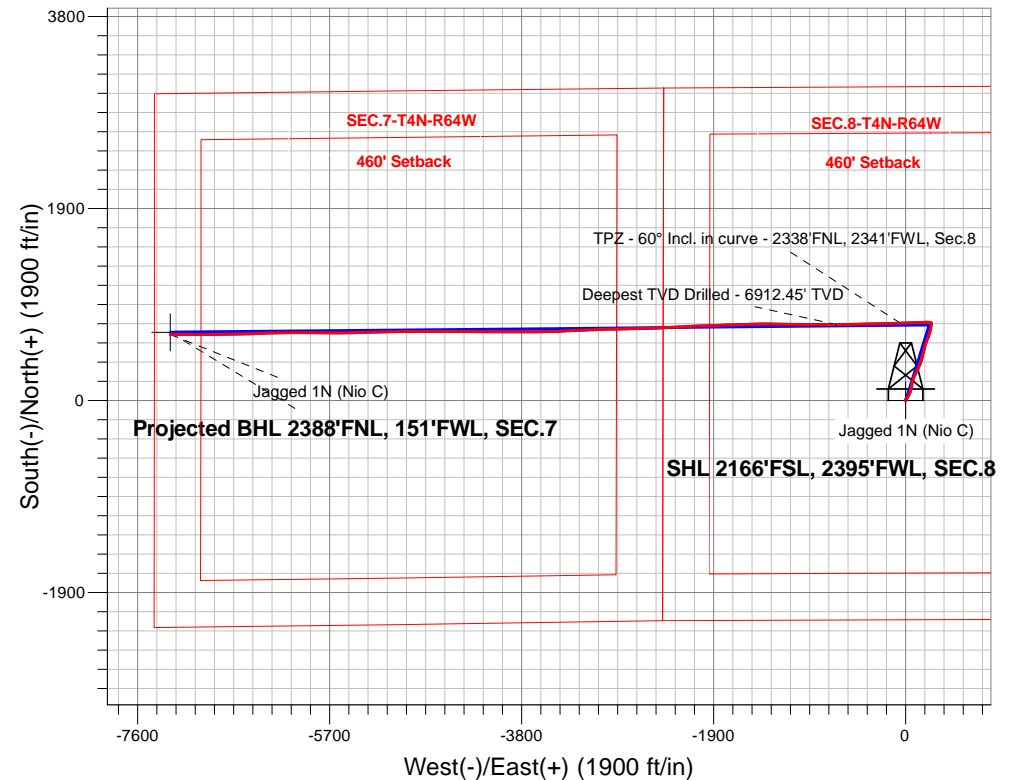
PDC Energy Inc. DJ Basin

Well Name: **Jagged 1N (Nio C)**

Surface Location: Jagged 4N64W08 Pad Sec.8-T4N-R64W
 North American Datum 1983 , US State Plane 1983, Colorado Northern Zone
 Ground Elevation: 4772.0
 +N/-S +E/-W Northing Easting Latitude Longitude Slot
 0.0 0.0 1362799.4 3257787.84 40.325596 -104.575403
 Original Well Elev WELL @ 4795.0ft (Original Well Elev)

FINAL SURVEY

Projected Bottom Hole Location
14,207'MD 6903'TVD 653'N & 7276'W of SHL
91.68 degree Incl @ 269.29 degree AZM



Jagged 4N64W08 Pad Sec.8-T4N-R64W
 Jagged 1N (Nio C)
 Jagged 1N (Nio C) Wellbore #1
 8:17, April 01 2019

ANNOTATIONS

TVD	MD	Annotation
6809.4	6966.7	TPZ - 60° Incl. in curve - 2338'FNL, 2341'FWL, Sec.8
6912.5	7605.0	Deepest TVD Drilled - 6912.45' TVD

LEGEND

- ▲ Jagged 1N (Nio C), Jagged 1N (Nio C) Wellbore #1, Plan #6 (3-20-19) V0
- Jagged 1N (Nio C) Wellbore #1
- Survey #1



PDC Energy Inc. DJ Basin

SEC.8-T4N-R64W

Jagged 4N64W08 Pad Sec.8-T4N-R64W

Jagged 1N (Nio C)

Jagged 1N (Nio C) Wellbore #1

Survey: Survey #1

Standard Survey Report

01 April, 2019

Company:	PDC Energy Inc. DJ Basin	Local Co-ordinate Reference:	Well Jagged 1N (Nio C)
Project:	SEC.8-T4N-R64W	TVD Reference:	WELL @ 4795.0ft (Original Well Elev)
Site:	Jagged 4N64W08 Pad Sec.8-T4N-R64W	MD Reference:	WELL @ 4795.0ft (Original Well Elev)
Well:	Jagged 1N (Nio C)	North Reference:	True
Wellbore:	Jagged 1N (Nio C) Wellbore #1	Survey Calculation Method:	Minimum Curvature
Design:	Jagged 1N (Nio C) Wellbore #1	Database:	US_EDM

Project	SEC.8-T4N-R64W, Weld County, Colorado		
Map System:	US State Plane 1983	System Datum:	Mean Sea Level
Geo Datum:	North American Datum 1983		Using Well Reference Point
Map Zone:	Colorado Northern Zone		Using geodetic scale factor

Site	Jagged 4N64W08 Pad Sec.8-T4N-R64W				
Site Position:		Northing:	1,362,819.46 usft	Latitude:	40.325651
From:	Lat/Long	Easting:	3,257,787.75 usft	Longitude:	-104.575403
Position Uncertainty:	0.0 ft	Slot Radius:	13-3/16 "	Grid Convergence:	0.60 °

Well	Jagged 1N (Nio C)					
Well Position	+N/-S	0.0 ft	Northing:	1,362,799.41 usft	Latitude:	40.325596
	+E/-W	0.0 ft	Easting:	3,257,787.85 usft	Longitude:	-104.575403
Position Uncertainty		0.0 ft	Wellhead Elevation:	0.0 ft	Ground Level:	4,772.0 ft

Wellbore	Jagged 1N (Nio C) Wellbore #1				
Magnetics	Model Name	Sample Date	Declination (°)	Dip Angle (°)	Field Strength (nT)
	HDGM	3/20/2018	8.25	66.87	52,282

Design	Jagged 1N (Nio C) Wellbore #1				
Audit Notes:					
Version:	1.0	Phase:	ACTUAL	Tie On Depth:	0.0
Vertical Section:	Depth From (TVD) (ft)	+N/-S (ft)	+E/-W (ft)	Direction (°)	
	0.0	0.0	0.0	275.31	

Survey Program	Date	4/1/2019			
From (ft)	To (ft)	Survey (Wellbore)	Tool Name	Description	
156.0	14,207.0	Survey #1 (Jagged 1N (Nio C) Wellbore #1	MWD	MWD - Standard	

Survey										
Measured Depth (ft)	Inclination (°)	Azimuth (°)	Vertical Depth (ft)	+N/-S (ft)	+E/-W (ft)	Vertical Section (ft)	Dogleg Rate (°/100usft)	Build Rate (°/100usft)	Turn Rate (°/100usft)	
0.0	0.00	0.00	0.0	0.0	0.0	0.0	0.00	0.00	0.00	
1.0	0.01	315.40	1.0	0.0	0.0	0.0	0.64	0.64	0.00	
SHL 2166'FSL, 2395'FWL, SEC.8										
156.0	1.00	315.40	156.0	1.0	-1.0	1.0	0.64	0.64	0.00	
251.0	2.10	21.10	251.0	3.2	-0.9	1.2	2.02	1.16	69.16	
348.0	4.30	26.40	347.8	8.1	1.3	-0.6	2.29	2.27	5.46	
443.0	5.30	36.30	442.5	14.8	5.5	-4.1	1.36	1.05	10.42	
634.0	5.60	35.80	632.6	29.5	16.2	-13.4	0.16	0.16	-0.26	
729.0	6.50	35.30	727.1	37.6	22.0	-18.4	0.95	0.95	-0.53	
825.0	7.10	29.90	822.4	47.2	28.1	-23.6	0.91	0.63	-5.63	
920.0	8.60	23.60	916.5	58.8	33.9	-28.3	1.82	1.58	-6.63	

Company:	PDC Energy Inc. DJ Basin	Local Co-ordinate Reference:	Well Jagged 1N (Nio C)
Project:	SEC.8-T4N-R64W	TVD Reference:	WELL @ 4795.0ft (Original Well Elev)
Site:	Jagged 4N64W08 Pad Sec.8-T4N-R64W	MD Reference:	WELL @ 4795.0ft (Original Well Elev)
Well:	Jagged 1N (Nio C)	North Reference:	True
Wellbore:	Jagged 1N (Nio C) Wellbore #1	Survey Calculation Method:	Minimum Curvature
Design:	Jagged 1N (Nio C) Wellbore #1	Database:	US_EDM

Survey									
Measured Depth (ft)	Inclination (°)	Azimuth (°)	Vertical Depth (ft)	+N/-S (ft)	+E/-W (ft)	Vertical Section (ft)	Dogleg Rate (°/100usft)	Build Rate (°/100usft)	Turn Rate (°/100usft)
1,016.0	8.40	24.00	1,011.5	71.8	39.6	-32.8	0.22	-0.21	0.42
1,111.0	9.80	15.80	1,105.3	85.9	44.6	-36.5	2.01	1.47	-8.63
1,206.0	9.60	14.30	1,198.9	101.4	48.8	-39.2	0.34	-0.21	-1.58
1,301.0	9.40	14.30	1,292.6	116.6	52.7	-41.7	0.21	-0.21	0.00
1,397.0	9.50	11.50	1,387.3	131.9	56.2	-43.7	0.49	0.10	-2.92
1,492.0	9.60	10.60	1,481.0	147.4	59.2	-45.3	0.19	0.11	-0.95
1,588.0	8.80	8.30	1,575.7	162.5	61.7	-46.4	0.92	-0.83	-2.40
1,637.0	8.10	6.60	1,624.2	169.7	62.7	-46.7	1.52	-1.43	-3.47
1,685.0	7.91	7.12	1,671.7	176.3	63.5	-46.9	0.42	-0.40	1.08
1,780.0	9.37	18.78	1,765.7	190.1	66.8	-48.9	2.39	1.54	12.27
1,876.0	9.20	17.62	1,860.4	204.8	71.6	-52.4	0.26	-0.18	-1.21
1,972.0	10.46	24.09	1,955.0	220.1	77.5	-56.8	1.74	1.31	6.74
2,067.0	10.88	24.76	2,048.4	236.1	84.8	-62.6	0.46	0.44	0.71
2,163.0	10.24	20.27	2,142.7	252.4	91.5	-67.8	1.09	-0.67	-4.68
2,258.0	9.10	23.07	2,236.4	267.2	97.4	-72.3	1.30	-1.20	2.95
2,354.0	10.75	28.77	2,331.0	282.0	104.7	-78.1	2.00	1.72	5.94
2,449.0	10.00	29.04	2,424.4	297.0	112.9	-85.0	0.79	-0.79	0.28
2,545.0	11.30	24.95	2,518.7	312.8	121.0	-91.5	1.57	1.35	-4.26
2,641.0	10.56	23.97	2,613.0	329.4	128.5	-97.5	0.79	-0.77	-1.02
2,736.0	10.44	22.09	2,706.4	345.3	135.3	-102.8	0.38	-0.13	-1.98
2,832.0	10.32	21.52	2,800.8	361.4	141.7	-107.7	0.16	-0.13	-0.59
2,927.0	9.98	19.71	2,894.4	377.0	147.6	-112.1	0.49	-0.36	-1.91
3,023.0	9.76	18.21	2,988.9	392.6	152.9	-116.0	0.35	-0.23	-1.56
3,119.0	11.65	16.78	3,083.3	409.6	158.3	-119.7	1.99	1.97	-1.49
3,215.0	10.73	13.15	3,177.4	427.6	163.1	-122.9	1.21	-0.96	-3.78
3,310.0	9.49	13.03	3,271.0	443.8	166.9	-125.1	1.31	-1.31	-0.13
3,406.0	8.60	12.22	3,365.8	458.6	170.2	-127.1	0.94	-0.93	-0.84
3,501.0	10.19	16.05	3,459.5	473.6	174.0	-129.5	1.80	1.67	4.03
3,597.0	9.32	15.59	3,554.1	489.2	178.5	-132.5	0.91	-0.91	-0.48
3,693.0	8.71	11.69	3,648.9	503.8	182.0	-134.7	0.90	-0.64	-4.06
3,788.0	8.48	9.96	3,742.8	517.8	184.7	-136.0	0.36	-0.24	-1.82
3,884.0	9.06	13.53	3,837.7	532.1	187.7	-137.7	0.83	0.60	3.72
3,979.0	11.28	20.35	3,931.2	548.1	192.7	-141.2	2.65	2.34	7.18
4,074.0	10.60	18.02	4,024.5	565.1	198.6	-145.5	0.85	-0.72	-2.45
4,170.0	9.32	16.43	4,119.1	581.0	203.5	-148.9	1.36	-1.33	-1.66
4,266.0	10.85	24.23	4,213.6	596.6	209.4	-153.4	2.13	1.59	8.13
4,361.0	9.85	24.67	4,307.0	612.2	216.5	-159.0	1.06	-1.05	0.46
4,457.0	10.72	22.05	4,401.5	627.9	223.3	-164.3	1.03	0.91	-2.73
4,552.0	12.80	18.51	4,494.5	646.1	229.9	-169.2	2.32	2.19	-3.73
4,648.0	11.69	17.26	4,588.3	665.5	236.2	-173.7	1.19	-1.16	-1.30
4,744.0	10.39	13.64	4,682.5	683.2	241.1	-176.9	1.53	-1.35	-3.77
4,840.0	9.62	10.09	4,777.1	699.5	244.6	-178.9	1.03	-0.80	-3.70
4,935.0	8.89	10.47	4,870.8	714.5	247.3	-180.2	0.77	-0.77	0.40

Company:	PDC Energy Inc. DJ Basin	Local Co-ordinate Reference:	Well Jagged 1N (Nio C)
Project:	SEC.8-T4N-R64W	TVD Reference:	WELL @ 4795.0ft (Original Well Elev)
Site:	Jagged 4N64W08 Pad Sec.8-T4N-R64W	MD Reference:	WELL @ 4795.0ft (Original Well Elev)
Well:	Jagged 1N (Nio C)	North Reference:	True
Wellbore:	Jagged 1N (Nio C) Wellbore #1	Survey Calculation Method:	Minimum Curvature
Design:	Jagged 1N (Nio C) Wellbore #1	Database:	US_EDM

Survey									
Measured Depth (ft)	Inclination (°)	Azimuth (°)	Vertical Depth (ft)	+N/-S (ft)	+E/-W (ft)	Vertical Section (ft)	Dogleg Rate (°/100usft)	Build Rate (°/100usft)	Turn Rate (°/100usft)
5,030.0	8.37	10.09	4,964.7	728.5	249.8	-181.4	0.55	-0.55	-0.40
5,126.0	8.20	8.21	5,059.7	742.2	252.0	-182.3	0.33	-0.18	-1.96
5,317.0	3.95	5.52	5,249.6	762.2	254.6	-183.1	2.23	-2.23	-1.41
5,412.0	1.31	350.74	5,344.5	766.6	254.8	-182.8	2.85	-2.78	-15.56
5,508.0	1.09	334.93	5,440.5	768.5	254.2	-182.1	0.41	-0.23	-16.47
5,603.0	2.25	271.40	5,535.5	769.3	252.0	-179.7	2.12	1.22	-66.87
5,699.0	1.85	266.80	5,631.4	769.3	248.5	-176.3	0.45	-0.42	-4.79
5,794.0	1.54	273.94	5,726.4	769.3	245.7	-173.5	0.39	-0.33	7.52
5,890.0	1.18	261.14	5,822.3	769.2	243.5	-171.3	0.49	-0.38	-13.33
6,081.0	0.86	311.97	6,013.3	769.9	240.4	-168.2	0.48	-0.17	26.61
6,177.0	0.97	335.04	6,109.3	771.1	239.6	-167.2	0.40	0.11	24.03
6,273.0	4.64	277.59	6,205.2	772.4	235.4	-163.0	4.37	3.82	-59.84
6,369.0	10.11	274.47	6,300.3	773.5	223.1	-150.6	5.71	5.70	-3.25
6,465.0	12.37	272.97	6,394.5	774.7	204.4	-131.9	2.37	2.35	-1.56
6,560.0	18.02	262.40	6,486.2	773.3	179.7	-107.4	6.60	5.95	-11.13
6,656.0	26.29	264.34	6,575.0	769.2	143.8	-72.0	8.65	8.61	2.02
6,751.0	33.16	271.03	6,657.5	767.6	96.8	-25.4	8.02	7.23	7.04
6,864.0	43.54	271.03	6,746.0	768.9	26.8	44.4	9.19	9.19	0.00
6,960.0	58.79	266.73	6,806.0	767.1	-47.7	118.5	16.26	15.89	-4.48
6,966.7	59.99	266.81	6,809.4	766.8	-53.5	124.2	17.95	17.92	1.20
TPZ - 60° Incl. in curve - 2338'FNL, 2341'FWL, Sec.8									
7,055.0	75.82	267.73	6,842.5	763.0	-135.0	204.9	17.95	17.93	1.04
7,150.0	75.53	268.55	6,866.0	760.0	-227.0	296.3	0.89	-0.31	0.86
7,246.0	79.95	266.66	6,886.4	756.0	-320.7	389.2	4.99	4.60	-1.97
7,341.0	86.37	269.47	6,897.7	752.9	-414.9	482.7	7.37	6.76	2.96
7,411.0	86.15	270.47	6,902.3	752.8	-484.7	552.2	1.46	-0.32	1.42
LPL 2365'FNL, 1909'FWL, SEC.8									
7,414.0	86.14	270.51	6,902.5	752.9	-487.7	555.2	1.46	-0.31	1.43
7,509.0	86.43	268.85	6,908.6	752.3	-582.5	649.6	1.77	0.31	-1.75
7,605.0	89.02	269.48	6,912.5	750.9	-678.4	744.9	2.78	2.70	0.66
Deepest TVD Drilled - 6912.45' TVD									
7,700.0	91.56	270.08	6,912.0	750.6	-773.4	839.5	2.75	2.67	0.63
7,796.0	91.04	270.33	6,909.8	750.9	-869.4	935.1	0.60	-0.54	0.26
7,892.0	90.64	270.24	6,908.4	751.4	-965.4	1,030.7	0.43	-0.42	-0.09
7,987.0	90.39	270.45	6,907.5	752.0	-1,060.4	1,125.3	0.34	-0.26	0.22
8,082.0	90.03	271.05	6,907.2	753.2	-1,155.4	1,220.0	0.74	-0.38	0.63
8,179.0	90.72	271.01	6,906.6	754.9	-1,252.3	1,316.8	0.71	0.71	-0.04
8,274.0	90.49	271.22	6,905.5	756.8	-1,347.3	1,411.5	0.33	-0.24	0.22
8,370.0	91.26	268.95	6,904.1	756.9	-1,443.3	1,507.1	2.50	0.80	-2.36
8,466.0	91.48	267.79	6,901.8	754.2	-1,539.2	1,602.4	1.23	0.23	-1.21
8,561.0	91.39	268.14	6,899.4	750.8	-1,634.1	1,696.6	0.38	-0.09	0.37
8,657.0	91.09	268.09	6,897.3	747.7	-1,730.1	1,791.8	0.32	-0.31	-0.05
8,752.0	90.75	268.20	6,895.8	744.6	-1,825.0	1,886.0	0.38	-0.36	0.12
8,847.0	90.57	268.46	6,894.7	741.8	-1,920.0	1,980.3	0.33	-0.19	0.27

Company:	PDC Energy Inc. DJ Basin	Local Co-ordinate Reference:	Well Jagged 1N (Nio C)
Project:	SEC.8-T4N-R64W	TVD Reference:	WELL @ 4795.0ft (Original Well Elev)
Site:	Jagged 4N64W08 Pad Sec.8-T4N-R64W	MD Reference:	WELL @ 4795.0ft (Original Well Elev)
Well:	Jagged 1N (Nio C)	North Reference:	True
Wellbore:	Jagged 1N (Nio C) Wellbore #1	Survey Calculation Method:	Minimum Curvature
Design:	Jagged 1N (Nio C) Wellbore #1	Database:	US_EDM

Survey									
Measured Depth (ft)	Inclination (°)	Azimuth (°)	Vertical Depth (ft)	+N/-S (ft)	+E/-W (ft)	Vertical Section (ft)	Dogleg Rate (°/100usft)	Build Rate (°/100usft)	Turn Rate (°/100usft)
8,943.0	90.73	267.69	6,893.6	738.6	-2,015.9	2,075.5	0.82	0.17	-0.80
9,039.0	90.73	266.86	6,892.4	734.0	-2,111.8	2,170.6	0.86	0.00	-0.86
9,135.0	91.28	266.75	6,890.7	728.7	-2,207.6	2,265.5	0.58	0.57	-0.11
9,230.0	90.80	267.95	6,889.0	724.3	-2,302.5	2,359.6	1.36	-0.51	1.26
9,326.0	90.55	266.97	6,887.9	720.0	-2,398.4	2,454.7	1.05	-0.26	-1.02
9,422.0	91.42	268.27	6,886.2	716.1	-2,494.3	2,549.8	1.63	0.91	1.35
9,517.0	91.55	268.21	6,883.7	713.1	-2,589.2	2,644.1	0.15	0.14	-0.06
9,613.0	91.32	269.36	6,881.3	711.1	-2,685.2	2,739.4	1.22	-0.24	1.20
9,708.0	88.83	269.06	6,881.2	709.8	-2,780.1	2,833.9	2.64	-2.62	-0.32
9,804.0	89.72	268.24	6,882.4	707.5	-2,876.1	2,929.2	1.26	0.93	-0.85
9,900.0	90.21	268.39	6,882.5	704.7	-2,972.1	3,024.5	0.53	0.51	0.16
9,995.0	90.48	267.66	6,881.9	701.4	-3,067.0	3,118.7	0.82	0.28	-0.77
10,091.0	91.12	267.14	6,880.6	697.1	-3,162.9	3,213.8	0.86	0.67	-0.54
10,187.0	88.70	268.63	6,880.7	693.5	-3,258.8	3,309.0	2.96	-2.52	1.55
10,282.0	87.68	266.20	6,883.7	689.3	-3,353.7	3,403.0	2.77	-1.07	-2.56
10,377.0	87.71	267.29	6,887.6	683.9	-3,448.4	3,496.9	1.15	0.03	1.15
10,472.0	88.14	269.57	6,891.0	681.3	-3,543.3	3,591.1	2.44	0.45	2.40
10,568.0	88.19	269.14	6,894.1	680.2	-3,639.3	3,686.6	0.45	0.05	-0.45
10,664.0	87.87	269.32	6,897.4	678.9	-3,735.2	3,782.0	0.38	-0.33	0.19
10,760.0	89.49	270.57	6,899.6	678.8	-3,831.2	3,877.5	2.13	1.69	1.30
10,855.0	89.29	270.30	6,900.6	679.5	-3,926.2	3,972.2	0.35	-0.21	-0.28
10,950.0	90.37	270.42	6,900.9	680.1	-4,021.2	4,066.8	1.14	1.14	0.13
11,046.0	90.03	270.03	6,900.5	680.5	-4,117.2	4,162.4	0.54	-0.35	-0.41
11,143.0	89.64	270.67	6,900.8	681.1	-4,214.2	4,259.1	0.77	-0.40	0.66
11,238.0	92.17	271.17	6,899.3	682.6	-4,309.1	4,353.8	2.71	2.66	0.53
11,333.0	92.32	270.68	6,895.6	684.2	-4,404.0	4,448.4	0.54	0.16	-0.52
11,428.0	92.78	269.86	6,891.4	684.6	-4,498.9	4,543.0	0.99	0.48	-0.86
11,524.0	93.49	269.67	6,886.1	684.2	-4,594.8	4,638.4	0.77	0.74	-0.20
11,619.0	92.89	270.32	6,880.8	684.2	-4,689.7	4,732.8	0.93	-0.63	0.68
11,715.0	91.41	269.58	6,877.2	684.1	-4,785.6	4,828.3	1.72	-1.54	-0.77
11,810.0	89.29	270.15	6,876.6	683.9	-4,880.6	4,922.9	2.31	-2.23	0.60
11,906.0	87.88	269.19	6,879.0	683.3	-4,976.5	5,018.4	1.78	-1.47	-1.00
12,002.0	87.89	268.38	6,882.6	681.3	-5,072.5	5,113.7	0.84	0.01	-0.84
12,097.0	89.01	269.34	6,885.1	679.4	-5,167.4	5,208.1	1.55	1.18	1.01
12,192.0	89.69	268.30	6,886.2	677.5	-5,262.4	5,302.5	1.31	0.72	-1.09
12,288.0	90.45	268.19	6,886.1	674.5	-5,358.3	5,397.7	0.80	0.79	-0.11
12,384.0	89.79	268.34	6,885.9	671.6	-5,454.3	5,493.0	0.71	-0.69	0.16
12,479.0	89.76	269.04	6,886.3	669.4	-5,549.3	5,587.4	0.74	-0.03	0.74
12,575.0	89.27	270.42	6,887.1	669.0	-5,645.2	5,682.9	1.53	-0.51	1.44
12,671.0	89.50	270.93	6,888.1	670.1	-5,741.2	5,778.6	0.58	0.24	0.53
12,767.0	90.22	270.29	6,888.3	671.1	-5,837.2	5,874.3	1.00	0.75	-0.67
12,863.0	91.05	270.55	6,887.3	671.8	-5,933.2	5,969.9	0.91	0.86	0.27
12,958.0	91.60	269.75	6,885.1	672.1	-6,028.2	6,064.5	1.02	0.58	-0.84

Company:	PDC Energy Inc. DJ Basin	Local Co-ordinate Reference:	Well Jagged 1N (Nio C)
Project:	SEC.8-T4N-R64W	TVD Reference:	WELL @ 4795.0ft (Original Well Elev)
Site:	Jagged 4N64W08 Pad Sec.8-T4N-R64W	MD Reference:	WELL @ 4795.0ft (Original Well Elev)
Well:	Jagged 1N (Nio C)	North Reference:	True
Wellbore:	Jagged 1N (Nio C) Wellbore #1	Survey Calculation Method:	Minimum Curvature
Design:	Jagged 1N (Nio C) Wellbore #1	Database:	US_EDM

Survey										
Measured Depth (ft)	Inclination (°)	Azimuth (°)	Vertical Depth (ft)	+N/-S (ft)	+E/-W (ft)	Vertical Section (ft)	Dogleg Rate (°/100usft)	Build Rate (°/100usft)	Turn Rate (°/100usft)	
13,054.0	89.07	269.36	6,884.5	671.3	-6,124.2	6,160.0	2.67	-2.64	-0.41	
13,149.0	87.82	268.28	6,887.1	669.4	-6,219.1	6,254.4	1.74	-1.32	-1.14	
13,245.0	87.84	269.02	6,890.7	667.1	-6,315.0	6,349.7	0.77	0.02	0.77	
13,340.0	87.86	267.12	6,894.3	663.9	-6,409.9	6,443.8	2.00	0.02	-2.00	
13,436.0	88.36	269.01	6,897.5	660.7	-6,505.8	6,539.0	2.04	0.52	1.97	
13,531.0	88.10	268.20	6,900.4	658.4	-6,600.7	6,633.3	0.90	-0.27	-0.85	
13,627.0	88.57	269.77	6,903.2	656.7	-6,696.7	6,728.7	1.71	0.49	1.64	
13,722.0	88.49	269.29	6,905.6	655.9	-6,791.6	6,823.2	0.51	-0.08	-0.51	
13,818.0	88.53	268.64	6,908.1	654.2	-6,887.6	6,918.6	0.68	0.04	-0.68	
13,913.0	90.53	270.03	6,908.9	653.1	-6,982.6	7,013.0	2.56	2.11	1.46	
14,009.0	90.94	270.12	6,907.7	653.2	-7,078.5	7,108.6	0.44	0.43	0.09	
14,105.0	91.54	270.21	6,905.6	653.5	-7,174.5	7,204.2	0.63	0.63	0.09	
14,149.0	91.68	269.29	6,904.4	653.3	-7,218.5	7,248.0	2.11	0.32	-2.09	
14,207.0	91.68	269.29	6,902.7	652.6	-7,276.5	7,305.6	0.00	0.00	0.00	
Projected BHL 2388'FNL, 151'FWL, SEC.7										

Design Targets										
Target Name	Dip Angle (°)	Dip Dir. (°)	TVD (ft)	+N/-S (ft)	+E/-W (ft)	Northing (usft)	Easting (usft)	Latitude	Longitude	
- hit/miss target										
- Shape										
SHL 2166'FSL, 2395'FW	0.00	0.00	1.0	0.0	0.0	1,362,799.43	3,257,787.85	40.325596	-104.575403	
- survey hits target center										
- Point										
Projected BHL 2388'FNL	0.00	0.00	6,888.0	675.7	-7,277.2	1,363,399.22	3,250,504.32	40.327448	-104.601503	
- survey misses target center by 27.4ft at 14207.0ft MD (6902.7 TVD, 652.6 N, -7276.5 E)										
- Point										

Survey Annotations					
Measured Depth (ft)	Vertical Depth (ft)	Local Coordinates			
		+N/-S (ft)	+E/-W (ft)	Comment	
6,966.7	6,809.4	766.8	-53.5	TPZ - 60° Incl. in curve - 2338'FNL, 2341'FWL, Sec.8	
7,605.0	6,912.5	750.9	-678.4	Deepest TVD Drilled - 6912.45' TVD	

Checked By: _____	Approved By: _____	Date: _____
-------------------	--------------------	-------------