

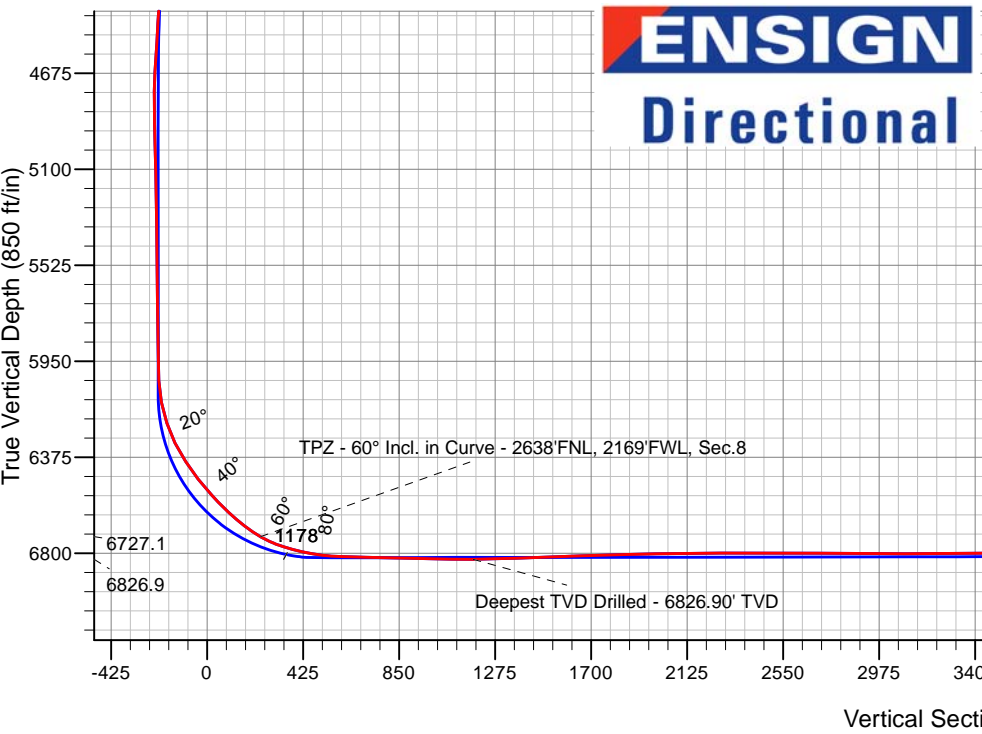
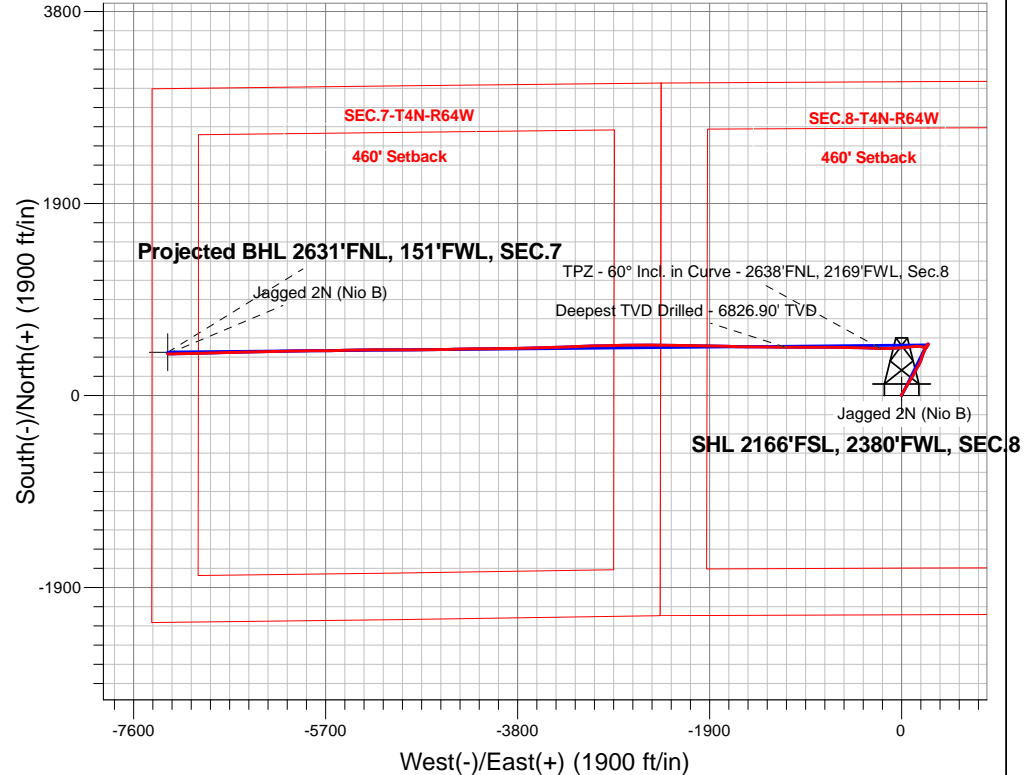
PDC Energy Inc. DJ Basin

Well Name: **Jagged 2N (Nio B)**

Surface Location: Jagged 4N64W08 Pad Sec.8-T4N-R64W
 North American Datum 1983 , US State Plane 1983, Colorado Northern Zone
 Ground Elevation: 4772.0
 +N/-S +E/-W Northing Easting Latitude Longitude Slot
 0.0 0.0 1362799.333257772.87 40.325596 -104.575457
 Original Well Elev WELL @ 4795.0ft (Original Well Elev)

FINAL SURVEY

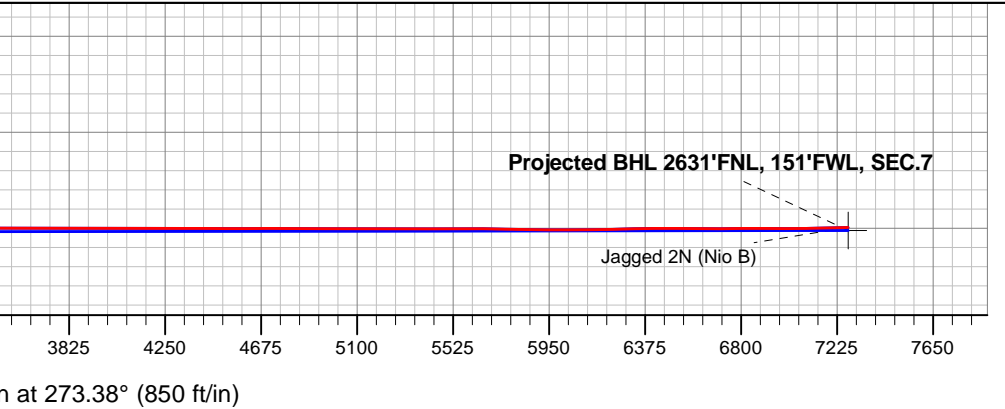
Projected Bottom Hole Location
14,003'MD 6797'TVD 410'N & 7262'W of SHL
91.61 degree Incl @ 268.53 degree AZM



Jagged 4N64W08 Pad Sec.8-T4N-R64W
 Jagged 2N (Nio B)
 Jagged 2N (Nio B) Wellbore #1
 10:01, April 08 2019

ANNOTATIONS		
TVD	MD	Annotation
6727.1	6934.8	TPZ - 60° Incl. in Curve - 2638'FNL, 2169'FWL, Sec.8
6826.9	7891.0	Deepest TVD Drilled - 6826.90' TVD

LEGEND	
	Jagged 2N (Nio B), Jagged 2N (Nio B) Wellbore #1, Plan #6 (3-31-19) V0
	Jagged 2N (Nio B) Wellbore #1
	Survey #1





PDC Energy Inc. DJ Basin

SEC.8-T4N-R64W

Jagged 4N64W08 Pad Sec.8-T4N-R64W

Jagged 2N (Nio B)

Jagged 2N (Nio B) Wellbore #1

Survey: Survey #1

Standard Survey Report

08 April, 2019



Company:	PDC Energy Inc. DJ Basin	Local Co-ordinate Reference:	Well Jagged 2N (Nio B)
Project:	SEC.8-T4N-R64W	TVD Reference:	WELL @ 4795.0ft (Original Well Elev)
Site:	Jagged 4N64W08 Pad Sec.8-T4N-R64W	MD Reference:	WELL @ 4795.0ft (Original Well Elev)
Well:	Jagged 2N (Nio B)	North Reference:	True
Wellbore:	Jagged 2N (Nio B) Wellbore #1	Survey Calculation Method:	Minimum Curvature
Design:	Jagged 2N (Nio B) Wellbore #1	Database:	US_EDM

Project	SEC.8-T4N-R64W, Weld County, Colorado		
Map System:	US State Plane 1983	System Datum:	Mean Sea Level
Geo Datum:	North American Datum 1983		Using Well Reference Point
Map Zone:	Colorado Northern Zone		Using geodetic scale factor

Site	Jagged 4N64W08 Pad Sec.8-T4N-R64W				
Site Position:		Northing:	1,362,819.46 usft	Latitude:	40.325651
From:	Lat/Long	Easting:	3,257,787.75 usft	Longitude:	-104.575403
Position Uncertainty:	0.0 ft	Slot Radius:	13-3/16 "	Grid Convergence:	0.60 °

Well	Jagged 2N (Nio B)					
Well Position	+N/-S	0.0 ft	Northing:	1,362,799.33 usft	Latitude:	40.325596
	+E/-W	0.0 ft	Easting:	3,257,772.87 usft	Longitude:	-104.575457
Position Uncertainty		0.0 ft	Wellhead Elevation:	0.0 ft	Ground Level:	4,772.0 ft

Wellbore	Jagged 2N (Nio B) Wellbore #1				
Magnetics	Model Name	Sample Date	Declination (°)	Dip Angle (°)	Field Strength (nT)
	HDGM	3/31/2019	8.17	66.82	52,160

Design	Jagged 2N (Nio B) Wellbore #1				
Audit Notes:					
Version:	1.0	Phase:	ACTUAL	Tie On Depth:	0.0
Vertical Section:	Depth From (TVD) (ft)	+N/-S (ft)	+E/-W (ft)	Direction (°)	
	0.0	0.0	0.0	273.38	

Survey Program	Date	4/8/2019			
From (ft)	To (ft)	Survey (Wellbore)	Tool Name	Description	
250.0	14,003.0	Survey #1 (Jagged 2N (Nio B) Wellbore #1	MWD	MWD - Standard	

Survey										
Measured Depth (ft)	Inclination (°)	Azimuth (°)	Vertical Depth (ft)	+N/-S (ft)	+E/-W (ft)	Vertical Section (ft)	Dogleg Rate (°/100usft)	Build Rate (°/100usft)	Turn Rate (°/100usft)	
0.0	0.00	0.00	0.0	0.0	0.0	0.0	0.00	0.00	0.00	
1.0	0.00	330.00	1.0	0.0	0.0	0.0	0.32	0.32	0.00	
SHL 2166°FSL, 2380°FWL, SEC.8										
250.0	0.80	330.00	250.0	1.5	-0.9	1.0	0.32	0.32	0.00	
345.0	0.80	313.60	345.0	2.5	-1.7	1.8	0.24	0.00	-17.26	
440.0	2.30	12.50	439.9	4.9	-1.8	2.0	2.11	1.58	62.00	
536.0	3.40	21.40	535.8	9.4	-0.3	0.8	1.23	1.15	9.27	
631.0	5.20	31.40	630.6	15.7	3.0	-2.0	2.05	1.89	10.53	
725.0	7.30	31.20	724.0	24.4	8.3	-6.8	2.23	2.23	-0.21	
821.0	9.20	30.90	819.0	36.2	15.4	-13.2	1.98	1.98	-0.31	
915.0	9.70	32.90	911.7	49.3	23.5	-20.6	0.64	0.53	2.13	

Company:	PDC Energy Inc. DJ Basin	Local Co-ordinate Reference:	Well Jagged 2N (Nio B)
Project:	SEC.8-T4N-R64W	TVD Reference:	WELL @ 4795.0ft (Original Well Elev)
Site:	Jagged 4N64W08 Pad Sec.8-T4N-R64W	MD Reference:	WELL @ 4795.0ft (Original Well Elev)
Well:	Jagged 2N (Nio B)	North Reference:	True
Wellbore:	Jagged 2N (Nio B) Wellbore #1	Survey Calculation Method:	Minimum Curvature
Design:	Jagged 2N (Nio B) Wellbore #1	Database:	US_EDM

Survey										
Measured Depth (ft)	Inclination (°)	Azimuth (°)	Vertical Depth (ft)	+N/-S (ft)	+E/-W (ft)	Vertical Section (ft)	Dogleg Rate (°/100usft)	Build Rate (°/100usft)	Turn Rate (°/100usft)	
1,011.0	9.50	31.90	1,006.4	62.9	32.1	-28.4	0.27	-0.21	-1.04	
1,106.0	9.10	31.40	1,100.1	75.9	40.2	-35.6	0.43	-0.42	-0.53	
1,201.0	8.50	30.70	1,194.0	88.4	47.7	-42.4	0.64	-0.63	-0.74	
1,296.0	8.20	28.80	1,288.0	100.3	54.5	-48.5	0.43	-0.32	-2.00	
1,391.0	7.90	29.90	1,382.1	111.9	61.1	-54.3	0.35	-0.32	1.16	
1,485.0	7.60	28.80	1,475.2	123.0	67.3	-59.9	0.36	-0.32	-1.17	
1,581.0	6.90	30.10	1,570.4	133.5	73.2	-65.2	0.75	-0.73	1.35	
1,630.0	6.20	28.30	1,619.1	138.4	75.9	-67.7	1.49	-1.43	-3.67	
1,771.0	6.66	31.01	1,759.2	152.1	83.8	-74.7	0.39	0.33	1.92	
1,866.0	8.44	33.02	1,853.4	162.7	90.4	-80.7	1.89	1.87	2.12	
1,960.0	10.44	30.86	1,946.1	175.8	98.5	-88.0	2.16	2.13	-2.30	
2,055.0	10.12	29.29	2,039.6	190.5	107.0	-95.6	0.45	-0.34	-1.65	
2,151.0	10.05	28.43	2,134.1	205.2	115.1	-102.9	0.17	-0.07	-0.90	
2,246.0	10.06	28.03	2,227.7	219.8	123.0	-109.8	0.07	0.01	-0.42	
2,341.0	9.15	27.26	2,321.3	233.8	130.4	-116.3	0.97	-0.96	-0.81	
2,437.0	8.55	27.86	2,416.2	246.9	137.2	-122.4	0.63	-0.63	0.63	
2,532.0	8.41	27.76	2,510.1	259.3	143.7	-128.2	0.15	-0.15	-0.11	
2,627.0	8.02	31.09	2,604.2	271.1	150.4	-134.1	0.65	-0.41	3.51	
2,722.0	7.84	30.91	2,698.3	282.4	157.1	-140.2	0.19	-0.19	-0.19	
2,818.0	7.81	29.70	2,793.4	293.7	163.7	-146.1	0.17	-0.03	-1.26	
2,913.0	7.72	27.83	2,887.5	304.9	169.9	-151.6	0.28	-0.09	-1.97	
2,936.0	7.65	27.06	2,910.3	307.6	171.3	-152.9	0.54	-0.30	-3.35	
3,125.0	7.41	23.60	3,097.7	330.0	181.9	-162.2	0.27	-0.13	-1.83	
3,220.0	6.74	22.59	3,191.9	340.8	186.5	-166.1	0.72	-0.71	-1.06	
3,316.0	6.49	22.19	3,287.3	351.0	190.7	-169.7	0.26	-0.26	-0.42	
3,411.0	5.96	19.71	3,381.7	360.6	194.4	-172.8	0.63	-0.56	-2.61	
3,506.0	5.53	20.13	3,476.3	369.6	197.7	-175.5	0.45	-0.45	0.44	
3,601.0	5.28	18.42	3,570.8	378.0	200.6	-178.0	0.31	-0.26	-1.80	
3,697.0	5.15	16.84	3,666.4	386.3	203.3	-180.1	0.20	-0.14	-1.65	
3,792.0	6.00	18.50	3,761.0	395.1	206.1	-182.4	0.91	0.89	1.75	
3,886.0	9.08	21.97	3,854.2	406.6	210.4	-186.1	3.31	3.28	3.69	
3,981.0	9.02	21.38	3,948.0	420.5	215.9	-190.8	0.12	-0.06	-0.62	
4,077.0	8.70	21.47	4,042.8	434.3	221.3	-195.3	0.33	-0.33	0.09	
4,172.0	8.47	22.61	4,136.8	447.4	226.6	-199.9	0.30	-0.24	1.20	
4,268.0	8.45	23.54	4,231.7	460.4	232.2	-204.6	0.14	-0.02	0.97	
4,363.0	9.67	24.51	4,325.5	474.1	238.3	-209.9	1.29	1.28	1.02	
4,459.0	9.25	22.63	4,420.2	488.5	244.6	-215.4	0.54	-0.44	-1.96	
4,555.0	7.26	32.07	4,515.2	500.8	250.8	-220.8	2.50	-2.07	9.83	
4,649.0	4.77	60.49	4,608.7	507.8	257.3	-227.0	4.05	-2.65	30.23	
4,744.0	2.30	87.42	4,703.6	509.8	262.7	-232.2	3.06	-2.60	28.35	
4,839.0	1.91	192.76	4,798.5	508.3	264.2	-233.8	3.53	-0.41	110.88	
4,934.0	2.87	214.55	4,893.4	504.8	262.5	-232.3	1.37	1.01	22.94	
5,029.0	2.69	211.77	4,988.3	501.0	260.0	-230.0	0.24	-0.19	-2.93	

Company:	PDC Energy Inc. DJ Basin	Local Co-ordinate Reference:	Well Jagged 2N (Nio B)
Project:	SEC.8-T4N-R64W	TVD Reference:	WELL @ 4795.0ft (Original Well Elev)
Site:	Jagged 4N64W08 Pad Sec.8-T4N-R64W	MD Reference:	WELL @ 4795.0ft (Original Well Elev)
Well:	Jagged 2N (Nio B)	North Reference:	True
Wellbore:	Jagged 2N (Nio B) Wellbore #1	Survey Calculation Method:	Minimum Curvature
Design:	Jagged 2N (Nio B) Wellbore #1	Database:	US_EDM

Survey										
Measured Depth (ft)	Inclination (°)	Azimuth (°)	Vertical Depth (ft)	+N/-S (ft)	+E/-W (ft)	Vertical Section (ft)	Dogleg Rate (°/100usft)	Build Rate (°/100usft)	Turn Rate (°/100usft)	
5,125.0	2.50	211.79	5,084.2	497.3	257.7	-228.0	0.20	-0.20	0.02	
5,220.0	2.17	212.13	5,179.1	494.0	255.7	-226.1	0.35	-0.35	0.36	
5,316.0	1.99	214.82	5,275.1	491.1	253.8	-224.4	0.21	-0.19	2.80	
5,412.0	1.90	207.67	5,371.0	488.3	252.1	-222.9	0.27	-0.09	-7.45	
5,507.0	1.67	204.58	5,466.0	485.7	250.8	-221.7	0.26	-0.24	-3.25	
5,602.0	1.76	204.10	5,560.9	483.1	249.6	-220.7	0.10	0.09	-0.51	
5,698.0	2.00	203.72	5,656.9	480.2	248.3	-219.6	0.25	0.25	-0.40	
5,793.0	1.92	208.63	5,751.8	477.3	246.9	-218.3	0.20	-0.08	5.17	
5,888.0	1.54	212.30	5,846.8	474.8	245.4	-217.0	0.42	-0.40	3.86	
5,983.0	1.16	220.31	5,941.8	473.0	244.1	-215.8	0.45	-0.40	8.43	
6,078.0	2.79	271.82	6,036.7	472.3	241.2	-212.9	2.38	1.72	54.22	
6,174.0	10.61	283.29	6,132.0	474.4	230.2	-201.9	8.22	8.15	11.95	
6,269.0	19.21	287.29	6,223.7	481.1	206.8	-178.1	9.11	9.05	4.21	
6,365.0	26.36	272.41	6,312.2	486.7	170.3	-141.3	9.51	7.45	-15.50	
6,460.0	33.45	264.75	6,394.6	485.2	123.1	-94.3	8.46	7.46	-8.06	
6,555.0	38.09	263.72	6,471.6	479.6	67.9	-39.5	4.93	4.88	-1.08	
6,650.0	42.52	265.00	6,544.0	473.6	6.7	21.2	4.74	4.66	1.35	
6,746.0	47.00	266.44	6,612.2	468.6	-60.7	88.2	4.78	4.67	1.50	
6,842.0	51.48	269.52	6,674.9	466.1	-133.3	160.5	5.26	4.67	3.21	
6,934.8	60.00	270.70	6,727.1	466.3	-209.9	237.0	9.24	9.18	1.28	
TPZ - 60° Incl. in Curve - 2638'FNL, 2169'FWL, Sec.8										
6,937.0	60.20	270.73	6,728.2	466.3	-211.8	238.9	9.24	9.18	1.16	
7,032.0	71.51	272.74	6,767.0	469.0	-298.3	325.5	12.06	11.91	2.12	
7,128.0	77.09	270.55	6,792.9	471.6	-390.7	417.8	6.21	5.81	-2.28	
7,211.7	82.86	270.86	6,807.5	472.6	-473.0	500.1	6.91	6.90	0.38	
LPL 2612'FNL, 1908'FWL, SEC.8										
7,224.0	83.71	270.91	6,808.9	472.8	-485.3	512.3	6.91	6.90	0.37	
7,319.0	88.45	271.23	6,815.4	474.6	-580.0	607.0	5.00	4.99	0.34	
7,414.0	88.43	270.78	6,818.0	476.3	-674.9	701.8	0.47	-0.02	-0.47	
7,509.0	88.78	270.48	6,820.3	477.3	-769.9	796.7	0.49	0.37	-0.32	
7,605.0	88.67	270.05	6,822.5	477.8	-865.9	892.5	0.46	-0.11	-0.45	
7,700.0	88.67	270.01	6,824.7	477.8	-960.9	987.4	0.04	0.00	-0.04	
7,796.0	88.90	269.96	6,826.7	477.8	-1,056.8	1,083.2	0.25	0.24	-0.05	
7,891.0	90.86	270.40	6,826.9	478.1	-1,151.8	1,178.0	2.11	2.06	0.46	
Deepest TVD Drilled - 6826.90' TVD										
7,987.0	91.41	270.59	6,825.0	478.9	-1,247.8	1,273.9	0.61	0.57	0.20	
8,083.0	91.90	270.62	6,822.2	479.9	-1,343.8	1,369.7	0.51	0.51	0.03	
8,178.0	91.88	270.42	6,819.1	480.8	-1,438.7	1,464.5	0.21	-0.02	-0.21	
8,274.0	92.65	270.48	6,815.3	481.5	-1,534.6	1,560.3	0.80	0.80	0.06	
8,370.0	91.82	271.63	6,811.6	483.3	-1,630.5	1,656.2	1.48	-0.86	1.20	
8,466.0	91.65	271.65	6,808.6	486.0	-1,726.5	1,752.1	0.18	-0.18	0.02	
8,561.0	91.30	271.64	6,806.2	488.8	-1,821.4	1,847.0	0.37	-0.37	-0.01	
8,656.0	91.24	271.27	6,804.1	491.2	-1,916.3	1,941.9	0.39	-0.06	-0.39	
8,752.0	90.61	271.12	6,802.5	493.2	-2,012.3	2,037.9	0.67	-0.66	-0.16	

Company:	PDC Energy Inc. DJ Basin	Local Co-ordinate Reference:	Well Jagged 2N (Nio B)
Project:	SEC.8-T4N-R64W	TVD Reference:	WELL @ 4795.0ft (Original Well Elev)
Site:	Jagged 4N64W08 Pad Sec.8-T4N-R64W	MD Reference:	WELL @ 4795.0ft (Original Well Elev)
Well:	Jagged 2N (Nio B)	North Reference:	True
Wellbore:	Jagged 2N (Nio B) Wellbore #1	Survey Calculation Method:	Minimum Curvature
Design:	Jagged 2N (Nio B) Wellbore #1	Database:	US_EDM

Survey										
Measured Depth (ft)	Inclination (°)	Azimuth (°)	Vertical Depth (ft)	+N/-S (ft)	+E/-W (ft)	Vertical Section (ft)	Dogleg Rate (°/100usft)	Build Rate (°/100usft)	Turn Rate (°/100usft)	
8,847.0	90.89	270.70	6,801.3	494.7	-2,107.3	2,132.8	0.53	0.29	-0.44	
8,943.0	91.22	270.67	6,799.5	495.8	-2,203.3	2,228.6	0.35	0.34	-0.03	
9,039.0	89.77	270.35	6,798.7	496.7	-2,299.2	2,324.5	1.55	-1.51	-0.33	
9,134.0	89.81	270.54	6,799.1	497.4	-2,394.2	2,419.4	0.20	0.04	0.20	
9,230.0	89.88	270.46	6,799.3	498.3	-2,490.2	2,515.3	0.11	0.07	-0.08	
9,326.0	89.65	269.75	6,799.7	498.4	-2,586.2	2,611.1	0.78	-0.24	-0.74	
9,421.0	89.69	269.73	6,800.3	498.0	-2,681.2	2,705.9	0.05	0.04	-0.02	
9,517.0	89.71	269.12	6,800.8	497.1	-2,777.2	2,801.7	0.64	0.02	-0.64	
9,613.0	89.57	268.85	6,801.4	495.4	-2,873.2	2,897.4	0.32	-0.15	-0.28	
9,708.0	89.76	268.61	6,801.9	493.2	-2,968.2	2,992.1	0.32	0.20	-0.25	
9,804.0	89.93	268.15	6,802.2	490.5	-3,064.1	3,087.7	0.51	0.18	-0.48	
9,899.0	90.19	268.07	6,802.1	487.4	-3,159.1	3,182.3	0.29	0.27	-0.08	
9,995.0	90.55	267.68	6,801.5	483.8	-3,255.0	3,277.9	0.55	0.38	-0.41	
10,091.0	91.03	267.34	6,800.1	479.7	-3,350.9	3,373.4	0.61	0.50	-0.35	
10,186.0	89.64	268.50	6,799.6	476.2	-3,445.9	3,467.9	1.91	-1.46	1.22	
10,282.0	90.01	268.35	6,799.9	473.6	-3,541.8	3,563.6	0.42	0.39	-0.16	
10,377.0	90.29	268.18	6,799.6	470.7	-3,636.8	3,658.2	0.34	0.29	-0.18	
10,472.0	90.46	267.87	6,799.0	467.4	-3,731.7	3,752.8	0.37	0.18	-0.33	
10,568.0	89.56	269.49	6,799.0	465.2	-3,827.7	3,848.5	1.93	-0.94	1.69	
10,664.0	89.38	269.63	6,799.9	464.5	-3,923.7	3,944.2	0.24	-0.19	0.15	
10,759.0	89.55	269.65	6,800.8	463.9	-4,018.7	4,039.0	0.18	0.18	0.02	
10,855.0	89.64	269.21	6,801.4	462.9	-4,114.7	4,134.8	0.47	0.09	-0.46	
10,950.0	90.13	268.87	6,801.6	461.3	-4,209.7	4,229.5	0.63	0.52	-0.36	
11,046.0	90.85	268.75	6,800.8	459.3	-4,305.6	4,325.2	0.76	0.75	-0.13	
11,142.0	89.37	269.26	6,800.6	457.7	-4,401.6	4,420.9	1.63	-1.54	0.53	
11,237.0	89.64	269.28	6,801.4	456.5	-4,496.6	4,515.7	0.28	0.28	0.02	
11,333.0	90.13	268.55	6,801.6	454.7	-4,592.6	4,611.4	0.92	0.51	-0.76	
11,428.0	90.67	268.14	6,801.0	451.9	-4,687.5	4,706.0	0.71	0.57	-0.43	
11,524.0	89.46	270.48	6,800.9	450.8	-4,783.5	4,801.8	2.74	-1.26	2.44	
11,619.0	89.24	270.68	6,801.9	451.7	-4,878.5	4,896.7	0.31	-0.23	0.21	
11,714.0	89.64	270.06	6,802.9	452.3	-4,973.5	4,991.5	0.78	0.42	-0.65	
11,810.0	90.12	269.94	6,803.1	452.3	-5,069.5	5,087.4	0.52	0.50	-0.13	
11,906.0	90.55	269.82	6,802.5	452.1	-5,165.5	5,183.2	0.47	0.45	-0.13	
12,001.0	89.39	269.50	6,802.6	451.6	-5,260.5	5,278.0	1.27	-1.22	-0.34	
12,097.0	89.67	269.03	6,803.3	450.3	-5,356.5	5,373.7	0.57	0.29	-0.49	
12,192.0	90.33	268.36	6,803.3	448.2	-5,451.5	5,468.4	0.99	0.69	-0.71	
12,288.0	90.78	267.94	6,802.4	445.1	-5,547.4	5,564.0	0.64	0.47	-0.44	
12,384.0	88.87	270.09	6,802.7	443.4	-5,643.4	5,659.7	3.00	-1.99	2.24	
12,479.0	88.80	269.89	6,804.6	443.4	-5,738.4	5,754.5	0.22	-0.07	-0.21	
12,575.0	89.22	269.68	6,806.3	443.0	-5,834.3	5,850.3	0.49	0.44	-0.22	
12,671.0	89.54	269.06	6,807.3	442.0	-5,930.3	5,946.1	0.73	0.33	-0.65	
12,767.0	90.26	268.86	6,807.5	440.2	-6,026.3	6,041.8	0.78	0.75	-0.21	
12,863.0	90.66	268.75	6,806.7	438.2	-6,122.3	6,137.5	0.43	0.42	-0.11	

Company:	PDC Energy Inc. DJ Basin	Local Co-ordinate Reference:	Well Jagged 2N (Nio B)
Project:	SEC.8-T4N-R64W	TVD Reference:	WELL @ 4795.0ft (Original Well Elev)
Site:	Jagged 4N64W08 Pad Sec.8-T4N-R64W	MD Reference:	WELL @ 4795.0ft (Original Well Elev)
Well:	Jagged 2N (Nio B)	North Reference:	True
Wellbore:	Jagged 2N (Nio B) Wellbore #1	Survey Calculation Method:	Minimum Curvature
Design:	Jagged 2N (Nio B) Wellbore #1	Database:	US_EDM

Measured Depth (ft)	Inclination (°)	Azimuth (°)	Vertical Depth (ft)	+N/-S (ft)	+E/-W (ft)	Vertical Section (ft)	Dogleg Rate (°/100usft)	Build Rate (°/100usft)	Turn Rate (°/100usft)
12,958.0	91.32	268.69	6,805.1	436.1	-6,217.3	6,232.2	0.70	0.69	-0.06
13,054.0	91.84	268.68	6,802.4	433.9	-6,313.2	6,327.8	0.54	0.54	-0.01
13,149.0	90.18	268.87	6,800.8	431.9	-6,408.2	6,422.5	1.76	-1.75	0.20
13,245.0	89.41	268.82	6,801.1	430.0	-6,504.1	6,518.2	0.80	-0.80	-0.05
13,340.0	89.52	268.22	6,802.0	427.5	-6,599.1	6,612.8	0.64	0.12	-0.63
13,436.0	90.31	268.19	6,802.1	424.5	-6,695.1	6,708.4	0.82	0.82	-0.03
13,531.0	91.06	267.87	6,801.0	421.2	-6,790.0	6,803.0	0.86	0.79	-0.34
13,627.0	89.34	269.35	6,800.7	418.9	-6,886.0	6,898.7	2.36	-1.79	1.54
13,722.0	89.73	268.82	6,801.4	417.4	-6,980.9	6,993.4	0.69	0.41	-0.56
13,818.0	90.73	268.33	6,801.1	415.0	-7,076.9	7,089.1	1.16	1.04	-0.51
13,913.0	91.56	268.52	6,799.2	412.4	-7,171.8	7,183.7	0.90	0.87	0.20
13,945.0	91.61	268.53	6,798.3	411.6	-7,203.8	7,215.6	0.16	0.16	0.03
14,002.6	91.61	268.53	6,796.7	410.1	-7,261.4	7,273.0	0.00	0.00	0.00
Projected BHL 2631'FNL, 151'FWL, SEC.7									
14,003.0	91.61	268.53	6,796.6	410.1	-7,261.8	7,273.3	0.00	0.00	0.00

Target Name	Dip Angle (°)	Dip Dir. (°)	TVD (ft)	+N/-S (ft)	+E/-W (ft)	Northing (usft)	Easting (usft)	Latitude	Longitude
SHL 2166'FSL, 2380'FW - hit/miss target - Shape - Point	0.00	0.00	1.0	0.0	0.0	1,362,799.34	3,257,772.87	40.325596	-104.575457
Projected BHL 2631'FNL - survey misses target center by 22.9ft at 14002.6ft MD (6796.7 TVD, 410.1 N, -7261.4 E) - Point	0.00	0.00	6,810.0	428.7	-7,262.3	1,363,152.28	3,250,506.85	40.326770	-104.601503

Measured Depth (ft)	Vertical Depth (ft)	Local Coordinates +N/-S (ft)	+E/-W (ft)	Comment
6,934.8	6,727.1	466.3	-209.9	TPZ - 60° Incl. in Curve - 2638'FNL, 2169'FWL, Sec.8
7,891.0	6,826.9	478.1	-1,151.8	Deepest TVD Drilled - 6826.90' TVD

Checked By: _____ Approved By: _____ Date: _____