

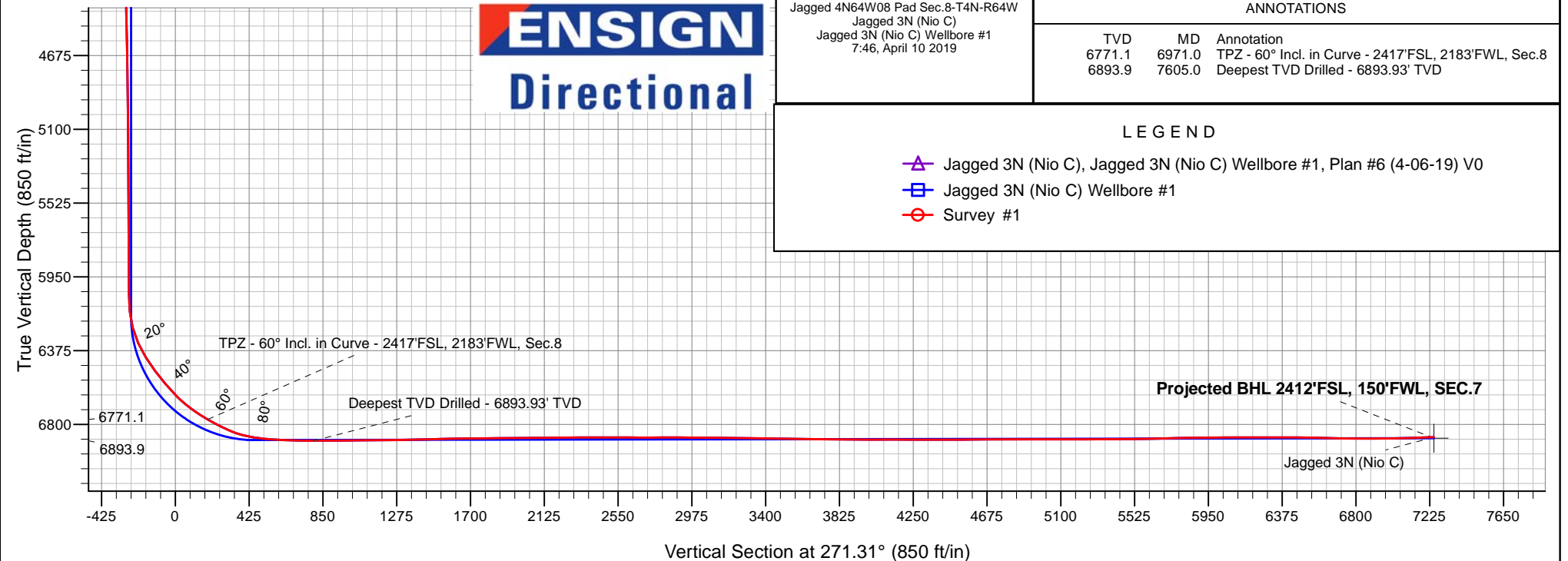
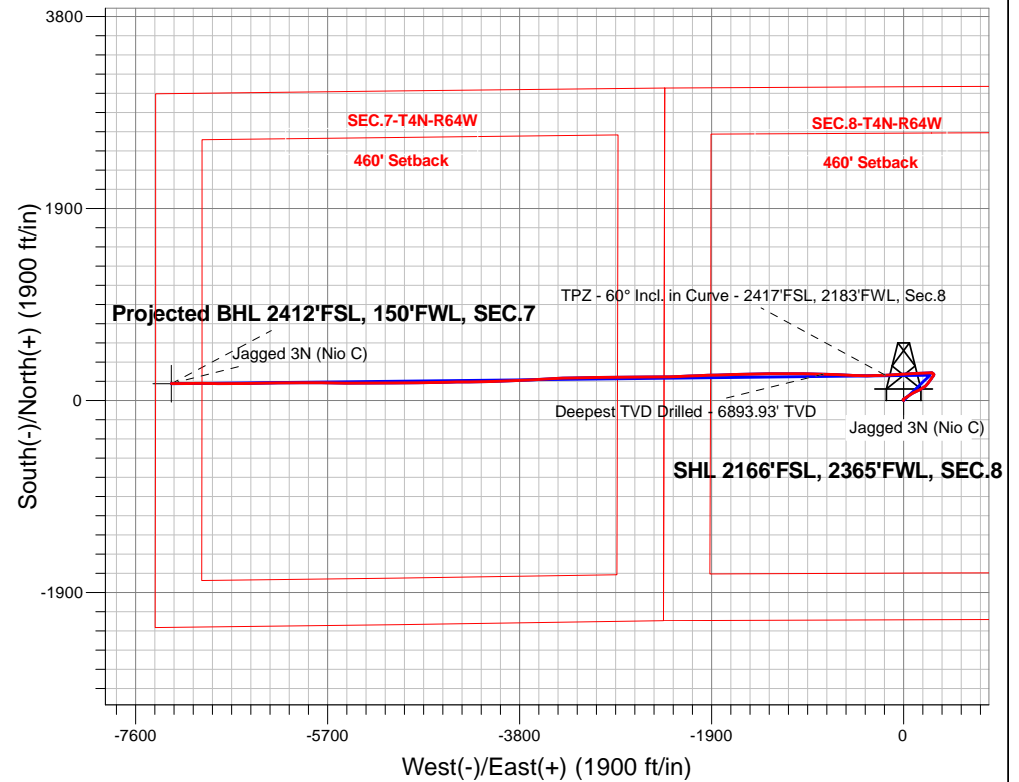
PDC Energy Inc. DJ Basin

Well Name: **Jagged 3N (Nio C)**

Surface Location: Jagged 4N64W08 Pad Sec.8-T4N-R64W
 North American Datum 1983 , US State Plane 1983, Colorado Northern Zone
 Ground Elevation: 4772.0
 +N/-S +E/-W Northing Easting Latitude Longitude Slot
 0.0 0.0 1362799.13257757.90 40.325596 -104.575510
 Original Well Elev WELL @ 4795.0ft (Original Well Elev)

FINAL SURVEY

Projected Bottom Hole Location
14,062'MD 6874'TVD 167'N & 7247'W of SHL
92.15 degree Incl @ 269.68 degree AZM





PDC Energy Inc. DJ Basin

SEC.8-T4N-R64W

Jagged 4N64W08 Pad Sec.8-T4N-R64W

Jagged 3N (Nio C)

Jagged 3N (Nio C) Wellbore #1

Survey: Survey #1

Standard Survey Report

10 April, 2019

Company:	PDC Energy Inc. DJ Basin	Local Co-ordinate Reference:	Well Jagged 3N (Nio C)
Project:	SEC.8-T4N-R64W	TVD Reference:	WELL @ 4795.0ft (Original Well Elev)
Site:	Jagged 4N64W08 Pad Sec.8-T4N-R64W	MD Reference:	WELL @ 4795.0ft (Original Well Elev)
Well:	Jagged 3N (Nio C)	North Reference:	True
Wellbore:	Jagged 3N (Nio C) Wellbore #1	Survey Calculation Method:	Minimum Curvature
Design:	Jagged 3N (Nio C) Wellbore #1	Database:	US_EDM

Project	SEC.8-T4N-R64W, Weld County, Colorado		
Map System:	US State Plane 1983	System Datum:	Mean Sea Level
Geo Datum:	North American Datum 1983		Using Well Reference Point
Map Zone:	Colorado Northern Zone		Using geodetic scale factor

Site	Jagged 4N64W08 Pad Sec.8-T4N-R64W				
Site Position:		Northing:	1,362,819.46 usft	Latitude:	40.325651
From:	Lat/Long	Easting:	3,257,787.75 usft	Longitude:	-104.575403
Position Uncertainty:	0.0 ft	Slot Radius:	13-3/16 "	Grid Convergence:	0.60 °

Well	Jagged 3N (Nio C)					
Well Position	+N/-S	0.0 ft	Northing:	1,362,799.13 usft	Latitude:	40.325596
	+E/-W	0.0 ft	Easting:	3,257,757.90 usft	Longitude:	-104.575510
Position Uncertainty		0.0 ft	Wellhead Elevation:	0.0 ft	Ground Level:	4,772.0 ft

Wellbore	Jagged 3N (Nio C) Wellbore #1				
Magnetics	Model Name	Sample Date	Declination (°)	Dip Angle (°)	Field Strength (nT)
	HDGM	4/1/2019	8.17	66.82	52,160

Design	Jagged 3N (Nio C) Wellbore #1				
Audit Notes:					
Version:	1.0	Phase:	ACTUAL	Tie On Depth:	0.0
Vertical Section:	Depth From (TVD) (ft)	+N/-S (ft)	+E/-W (ft)	Direction (°)	
	0.0	0.0	0.0	271.31	

Survey Program	Date	4/10/2019			
From (ft)	To (ft)	Survey (Wellbore)	Tool Name	Description	
155.0	14,062.0	Survey #1 (Jagged 3N (Nio C) Wellbore #1	MWD	MWD - Standard	

Survey										
Measured Depth (ft)	Inclination (°)	Azimuth (°)	Vertical Depth (ft)	+N/-S (ft)	+E/-W (ft)	Vertical Section (ft)	Dogleg Rate (°/100usft)	Build Rate (°/100usft)	Turn Rate (°/100usft)	
0.0	0.00	0.00	0.0	0.0	0.0	0.0	0.00	0.00	0.00	
1.0	0.01	309.50	1.0	0.0	0.0	0.0	0.65	0.65	0.00	
SHL 2166'FSL, 2365'FWL, SEC.8										
155.0	1.00	309.50	155.0	0.9	-1.0	1.1	0.65	0.65	0.00	
250.0	1.10	324.70	250.0	2.1	-2.2	2.3	0.31	0.11	16.00	
345.0	1.10	329.00	345.0	3.7	-3.2	3.3	0.09	0.00	4.53	
440.0	1.20	325.40	439.9	5.3	-4.2	4.4	0.13	0.11	-3.79	
536.0	1.10	322.80	535.9	6.8	-5.4	5.5	0.12	-0.10	-2.71	
631.0	1.20	15.30	630.9	8.5	-5.7	5.9	1.07	0.11	55.26	
725.0	3.20	43.80	724.8	11.3	-3.6	3.8	2.36	2.13	30.32	
821.0	4.80	51.00	820.6	15.8	1.4	-1.0	1.74	1.67	7.50	

Company:	PDC Energy Inc. DJ Basin	Local Co-ordinate Reference:	Well Jagged 3N (Nio C)
Project:	SEC.8-T4N-R64W	TVD Reference:	WELL @ 4795.0ft (Original Well Elev)
Site:	Jagged 4N64W08 Pad Sec.8-T4N-R64W	MD Reference:	WELL @ 4795.0ft (Original Well Elev)
Well:	Jagged 3N (Nio C)	North Reference:	True
Wellbore:	Jagged 3N (Nio C) Wellbore #1	Survey Calculation Method:	Minimum Curvature
Design:	Jagged 3N (Nio C) Wellbore #1	Database:	US_EDM

Survey									
Measured Depth (ft)	Inclination (°)	Azimuth (°)	Vertical Depth (ft)	+N/-S (ft)	+E/-W (ft)	Vertical Section (ft)	Dogleg Rate (°/100usft)	Build Rate (°/100usft)	Turn Rate (°/100usft)
915.0	6.30	55.80	914.2	21.2	8.7	-8.2	1.67	1.60	5.11
1,011.0	7.00	58.80	1,009.5	27.2	18.1	-17.5	0.81	0.73	3.13
1,106.0	6.80	60.50	1,103.8	32.9	27.9	-27.2	0.30	-0.21	1.79
1,201.0	6.30	59.20	1,198.2	38.4	37.3	-36.4	0.55	-0.53	-1.37
1,296.0	6.20	58.20	1,292.6	43.8	46.1	-45.1	0.16	-0.11	-1.05
1,391.0	5.80	56.00	1,387.1	49.1	54.5	-53.3	0.49	-0.42	-2.32
1,485.0	5.80	54.00	1,480.6	54.6	62.3	-61.0	0.22	0.00	-2.13
1,581.0	5.40	53.40	1,576.2	60.1	69.8	-68.4	0.42	-0.42	-0.63
1,771.0	6.34	57.94	1,765.2	71.0	85.9	-84.2	0.55	0.49	2.39
1,866.0	8.50	66.20	1,859.4	76.7	96.7	-95.0	2.53	2.27	8.69
1,960.0	8.37	64.85	1,952.4	82.4	109.3	-107.4	0.25	-0.14	-1.44
2,055.0	8.22	64.94	2,046.4	88.2	121.7	-119.7	0.16	-0.16	0.09
2,246.0	7.66	64.78	2,235.5	99.4	145.6	-143.3	0.29	-0.29	-0.08
2,341.0	7.33	64.70	2,329.7	104.7	156.8	-154.4	0.35	-0.35	-0.08
2,437.0	7.18	59.04	2,425.0	110.4	167.5	-164.9	0.76	-0.16	-5.90
2,532.0	9.26	54.48	2,519.0	117.9	178.8	-176.1	2.29	2.19	-4.80
2,627.0	9.01	55.90	2,612.8	126.5	191.2	-188.2	0.35	-0.26	1.49
2,723.0	8.85	55.87	2,707.6	134.8	203.5	-200.4	0.17	-0.17	-0.03
2,818.0	8.70	54.86	2,801.5	143.1	215.4	-212.1	0.23	-0.16	-1.06
2,913.0	9.94	38.56	2,895.3	153.6	226.4	-222.9	3.06	1.31	-17.16
3,030.0	9.72	38.45	3,010.5	169.3	238.9	-234.9	0.19	-0.19	-0.09
3,125.0	9.30	37.13	3,104.2	181.7	248.5	-244.3	0.50	-0.44	-1.39
3,220.0	8.57	36.66	3,198.1	193.5	257.3	-252.9	0.77	-0.77	-0.49
3,316.0	8.30	34.93	3,293.0	204.9	265.6	-260.8	0.39	-0.28	-1.80
3,411.0	7.69	35.23	3,387.1	215.7	273.2	-268.2	0.64	-0.64	0.32
3,506.0	7.44	34.95	3,481.3	225.9	280.4	-275.1	0.27	-0.26	-0.29
3,601.0	7.22	34.04	3,575.5	235.9	287.2	-281.8	0.26	-0.23	-0.96
3,697.0	6.95	35.57	3,670.8	245.6	294.0	-288.3	0.34	-0.28	1.59
3,792.0	4.41	19.54	3,765.3	253.8	298.5	-292.7	3.13	-2.67	-16.87
3,886.0	1.92	336.52	3,859.2	258.6	299.1	-293.1	3.49	-2.65	-45.77
3,981.0	1.51	310.91	3,954.1	260.9	297.5	-291.5	0.90	-0.43	-26.96
4,077.0	1.48	306.03	4,050.1	262.4	295.6	-289.5	0.14	-0.03	-5.08
4,363.0	1.37	304.99	4,336.0	266.6	289.8	-283.6	0.04	-0.04	-0.36
4,459.0	1.33	304.46	4,432.0	267.9	287.9	-281.7	0.04	-0.04	-0.55
4,555.0	1.34	302.70	4,528.0	269.1	286.1	-279.9	0.04	0.01	-1.83
4,649.0	1.24	311.89	4,621.9	270.4	284.4	-278.1	0.24	-0.11	9.78
4,744.0	1.14	304.03	4,716.9	271.6	282.8	-276.6	0.20	-0.11	-8.27
4,839.0	0.89	291.02	4,811.9	272.4	281.4	-275.1	0.36	-0.26	-13.69
4,934.0	0.91	282.71	4,906.9	272.8	280.0	-273.6	0.14	0.02	-8.75
5,029.0	0.64	281.22	5,001.9	273.1	278.7	-272.4	0.28	-0.28	-1.57
5,220.0	0.58	296.43	5,192.9	273.7	276.8	-270.5	0.09	-0.03	7.96
5,316.0	0.41	323.38	5,288.9	274.2	276.1	-269.8	0.30	-0.18	28.07
5,412.0	0.29	4.50	5,384.9	274.7	276.0	-269.6	0.28	-0.13	42.83

Company:	PDC Energy Inc. DJ Basin	Local Co-ordinate Reference:	Well Jagged 3N (Nio C)
Project:	SEC.8-T4N-R64W	TVD Reference:	WELL @ 4795.0ft (Original Well Elev)
Site:	Jagged 4N64W08 Pad Sec.8-T4N-R64W	MD Reference:	WELL @ 4795.0ft (Original Well Elev)
Well:	Jagged 3N (Nio C)	North Reference:	True
Wellbore:	Jagged 3N (Nio C) Wellbore #1	Survey Calculation Method:	Minimum Curvature
Design:	Jagged 3N (Nio C) Wellbore #1	Database:	US_EDM

Survey									
Measured Depth (ft)	Inclination (°)	Azimuth (°)	Vertical Depth (ft)	+N/-S (ft)	+E/-W (ft)	Vertical Section (ft)	Dogleg Rate (°/100usft)	Build Rate (°/100usft)	Turn Rate (°/100usft)
5,507.0	0.27	353.83	5,479.9	275.2	276.0	-269.6	0.06	-0.02	-11.23
5,602.0	0.21	308.55	5,574.9	275.5	275.8	-269.4	0.20	-0.06	-47.66
5,698.0	0.49	253.95	5,670.9	275.5	275.3	-268.9	0.42	0.29	-56.88
5,793.0	0.62	230.85	5,765.9	275.1	274.5	-268.1	0.27	0.14	-24.32
5,888.0	0.45	239.26	5,860.8	274.6	273.8	-267.4	0.20	-0.18	8.85
5,983.0	0.46	229.11	5,955.8	274.1	273.1	-266.8	0.09	0.01	-10.68
6,079.0	0.36	212.37	6,051.8	273.6	272.7	-266.4	0.16	-0.10	-17.44
6,174.0	4.54	270.55	6,146.7	273.4	268.8	-262.5	4.59	4.40	61.24
6,269.0	14.72	269.02	6,240.3	273.2	252.9	-246.6	10.72	10.72	-1.61
6,365.0	24.94	266.37	6,330.5	271.7	220.4	-214.2	10.68	10.65	-2.76
6,460.0	31.50	267.42	6,414.1	269.4	175.6	-169.4	6.92	6.91	1.11
6,555.0	37.38	266.79	6,492.4	266.6	122.0	-115.8	6.20	6.19	-0.66
6,650.0	40.40	267.75	6,566.4	263.8	62.4	-56.3	3.24	3.18	1.01
6,746.0	44.36	267.33	6,637.3	261.0	-2.2	8.2	4.14	4.13	-0.44
6,842.0	52.68	265.18	6,700.8	256.2	-73.9	79.8	8.83	8.67	-2.24
6,937.0	59.28	266.57	6,753.9	250.6	-152.4	158.1	7.05	6.95	1.46
6,971.0	60.00	267.15	6,771.1	249.0	-181.7	187.4	2.58	2.11	1.72
TPZ - 60° Incl. in Curve - 2417'FSL, 2183'FWL, Sec.8									
7,032.0	61.29	268.18	6,801.0	246.8	-234.8	240.4	2.58	2.12	1.68
7,128.0	68.47	269.35	6,841.8	245.0	-321.7	327.2	7.56	7.48	1.22
7,224.0	78.50	271.93	6,869.0	246.1	-413.6	419.1	10.76	10.45	2.69
7,269.2	81.47	271.44	6,876.9	247.4	-458.1	463.6	6.66	6.57	-1.09
LPL 2410'FSL,1908'FWL, SEC.8									
7,319.0	84.74	270.90	6,882.9	248.4	-507.5	513.0	6.66	6.57	-1.08
7,414.0	87.03	274.73	6,889.7	253.0	-602.1	607.7	4.69	2.41	4.03
7,509.0	88.98	271.90	6,893.0	258.5	-696.9	702.6	3.62	2.05	-2.98
7,605.0	89.88	270.87	6,893.9	260.8	-792.9	798.6	1.42	0.94	-1.07
Deepest TVD Drilled - 6893.93' TVD									
7,700.0	90.41	270.56	6,893.7	262.0	-887.8	893.6	0.65	0.56	-0.33
7,796.0	90.65	270.70	6,892.8	263.1	-983.8	989.6	0.29	0.25	0.15
7,891.0	90.62	270.75	6,891.8	264.3	-1,078.8	1,084.6	0.06	-0.03	0.05
7,987.0	90.30	270.72	6,891.0	265.5	-1,174.8	1,180.6	0.33	-0.33	-0.03
8,083.0	90.96	269.86	6,889.9	266.0	-1,270.8	1,276.5	1.13	0.69	-0.90
8,178.0	91.36	268.71	6,888.0	264.8	-1,365.8	1,371.5	1.28	0.42	-1.21
8,274.0	91.27	268.55	6,885.8	262.5	-1,461.7	1,467.3	0.19	-0.09	-0.17
8,370.0	91.39	268.95	6,883.6	260.4	-1,557.7	1,563.2	0.43	0.13	0.42
8,466.0	90.89	268.31	6,881.7	258.1	-1,653.6	1,659.1	0.85	-0.52	-0.67
8,561.0	90.54	268.32	6,880.5	255.3	-1,748.6	1,754.0	0.37	-0.37	0.01
8,657.0	90.51	267.94	6,879.6	252.2	-1,844.5	1,849.8	0.40	-0.03	-0.40
8,752.0	90.47	268.04	6,878.8	248.9	-1,939.5	1,944.6	0.11	-0.04	0.11
8,847.0	90.38	267.91	6,878.1	245.5	-2,034.4	2,039.5	0.17	-0.09	-0.14
8,943.0	90.46	267.64	6,877.4	241.8	-2,130.3	2,135.3	0.29	0.08	-0.28
9,039.0	90.34	267.95	6,876.7	238.1	-2,226.3	2,231.1	0.35	-0.13	0.32
9,134.0	90.82	268.03	6,875.7	234.8	-2,321.2	2,325.9	0.51	0.51	0.08

Company:	PDC Energy Inc. DJ Basin	Local Co-ordinate Reference:	Well Jagged 3N (Nio C)
Project:	SEC.8-T4N-R64W	TVD Reference:	WELL @ 4795.0ft (Original Well Elev)
Site:	Jagged 4N64W08 Pad Sec.8-T4N-R64W	MD Reference:	WELL @ 4795.0ft (Original Well Elev)
Well:	Jagged 3N (Nio C)	North Reference:	True
Wellbore:	Jagged 3N (Nio C) Wellbore #1	Survey Calculation Method:	Minimum Curvature
Design:	Jagged 3N (Nio C) Wellbore #1	Database:	US_EDM

Survey										
Measured Depth (ft)	Inclination (°)	Azimuth (°)	Vertical Depth (ft)	+N/-S (ft)	+E/-W (ft)	Vertical Section (ft)	Dogleg Rate (°/100usft)	Build Rate (°/100usft)	Turn Rate (°/100usft)	
9,230.0	89.70	269.69	6,875.3	232.9	-2,417.2	2,421.8	2.09	-1.17	1.73	
9,326.0	89.77	269.37	6,875.8	232.1	-2,513.2	2,517.8	0.34	0.07	-0.33	
9,422.0	89.90	269.90	6,876.0	231.5	-2,609.2	2,613.8	0.57	0.14	0.55	
9,517.0	90.03	269.73	6,876.1	231.2	-2,704.2	2,708.7	0.23	0.14	-0.18	
9,613.0	90.35	270.05	6,875.8	231.0	-2,800.2	2,804.7	0.47	0.33	0.33	
9,708.0	89.47	268.98	6,875.9	230.2	-2,895.1	2,899.6	1.46	-0.93	-1.13	
9,804.0	90.22	269.36	6,876.2	228.8	-2,991.1	2,995.6	0.88	0.78	0.40	
9,899.0	89.38	268.62	6,876.5	227.1	-3,086.1	3,090.5	1.18	-0.88	-0.78	
9,995.0	89.34	268.78	6,877.6	224.9	-3,182.1	3,186.4	0.17	-0.04	0.17	
10,091.0	89.12	268.68	6,878.9	222.8	-3,278.1	3,282.3	0.25	-0.23	-0.10	
10,186.0	88.69	267.97	6,880.7	220.0	-3,373.0	3,377.1	0.87	-0.45	-0.75	
10,282.0	88.99	267.83	6,882.6	216.5	-3,468.9	3,473.0	0.34	0.31	-0.15	
10,377.0	89.08	267.10	6,884.2	212.3	-3,563.8	3,567.7	0.77	0.09	-0.77	
10,472.0	89.54	266.80	6,885.4	207.3	-3,658.7	3,662.4	0.58	0.48	-0.32	
10,568.0	89.46	266.18	6,886.2	201.4	-3,754.5	3,758.1	0.65	-0.08	-0.65	
10,664.0	89.61	265.71	6,887.0	194.6	-3,850.2	3,853.7	0.51	0.16	-0.49	
10,759.0	90.05	268.34	6,887.3	189.7	-3,945.1	3,948.4	2.81	0.46	2.77	
10,855.0	89.73	269.65	6,887.5	188.0	-4,041.1	4,044.3	1.40	-0.33	1.36	
10,950.0	89.71	269.22	6,887.9	187.0	-4,136.1	4,139.3	0.45	-0.02	-0.45	
11,046.0	89.86	269.24	6,888.3	185.7	-4,232.1	4,235.2	0.16	0.16	0.02	
11,142.0	89.80	269.27	6,888.6	184.5	-4,328.1	4,331.1	0.07	-0.06	0.03	
11,238.0	90.28	269.33	6,888.5	183.3	-4,424.1	4,427.1	0.50	0.50	0.06	
11,333.0	90.36	268.92	6,888.0	181.9	-4,519.0	4,522.0	0.44	0.08	-0.43	
11,428.0	90.73	268.56	6,887.1	179.8	-4,614.0	4,616.9	0.54	0.39	-0.38	
11,524.0	90.32	268.11	6,886.2	177.0	-4,710.0	4,712.8	0.63	-0.43	-0.47	
11,619.0	90.10	268.75	6,885.8	174.4	-4,804.9	4,807.7	0.71	-0.23	0.67	
11,715.0	89.51	270.37	6,886.2	173.7	-4,900.9	4,903.6	1.80	-0.61	1.69	
11,810.0	89.97	269.99	6,886.6	174.0	-4,995.9	4,998.6	0.63	0.48	-0.40	
11,906.0	90.31	269.78	6,886.4	173.8	-5,091.9	5,094.6	0.42	0.35	-0.22	
12,001.0	90.38	269.21	6,885.8	172.9	-5,186.9	5,189.5	0.60	0.07	-0.60	
12,097.0	90.17	268.78	6,885.3	171.2	-5,282.9	5,285.4	0.50	-0.22	-0.45	
12,192.0	89.83	270.38	6,885.3	170.5	-5,377.9	5,380.4	1.72	-0.36	1.68	
12,288.0	90.74	271.05	6,884.9	171.7	-5,473.9	5,476.4	1.18	0.95	0.70	
12,384.0	90.90	270.69	6,883.5	173.2	-5,569.9	5,572.4	0.41	0.17	-0.38	
12,479.0	91.23	270.43	6,881.7	174.1	-5,664.8	5,667.3	0.44	0.35	-0.27	
12,575.0	91.83	269.83	6,879.2	174.3	-5,760.8	5,763.3	0.88	0.63	-0.63	
12,671.0	90.29	270.19	6,877.4	174.4	-5,856.8	5,859.2	1.65	-1.60	0.38	
12,767.0	90.63	270.72	6,876.6	175.1	-5,952.8	5,955.2	0.66	0.35	0.55	
12,863.0	90.31	269.90	6,875.8	175.6	-6,048.8	6,051.2	0.92	-0.33	-0.85	
12,958.0	90.17	269.63	6,875.4	175.3	-6,143.8	6,146.2	0.32	-0.15	-0.28	
13,054.0	90.00	269.05	6,875.3	174.1	-6,239.8	6,242.1	0.63	-0.18	-0.60	
13,149.0	89.68	268.05	6,875.5	171.7	-6,334.7	6,337.0	1.11	-0.34	-1.05	
13,245.0	90.13	267.95	6,875.7	168.4	-6,430.7	6,432.8	0.48	0.47	-0.10	

Company:	PDC Energy Inc. DJ Basin	Local Co-ordinate Reference:	Well Jagged 3N (Nio C)
Project:	SEC.8-T4N-R64W	TVD Reference:	WELL @ 4795.0ft (Original Well Elev)
Site:	Jagged 4N64W08 Pad Sec.8-T4N-R64W	MD Reference:	WELL @ 4795.0ft (Original Well Elev)
Well:	Jagged 3N (Nio C)	North Reference:	True
Wellbore:	Jagged 3N (Nio C) Wellbore #1	Survey Calculation Method:	Minimum Curvature
Design:	Jagged 3N (Nio C) Wellbore #1	Database:	US_EDM

Survey										
Measured Depth (ft)	Inclination (°)	Azimuth (°)	Vertical Depth (ft)	+N/-S (ft)	+E/-W (ft)	Vertical Section (ft)	Dogleg Rate (°/100usft)	Build Rate (°/100usft)	Turn Rate (°/100usft)	
13,340.0	88.80	270.28	6,876.6	166.9	-6,525.6	6,527.8	2.82	-1.40	2.45	
13,436.0	88.83	270.61	6,878.6	167.7	-6,621.6	6,623.7	0.35	0.03	-0.34	
13,531.0	89.06	270.30	6,880.3	168.4	-6,716.6	6,718.7	0.41	0.24	-0.33	
13,627.0	89.60	270.32	6,881.4	168.9	-6,812.6	6,814.7	0.56	0.56	0.02	
13,722.0	90.23	270.03	6,881.6	169.2	-6,907.6	6,909.7	0.73	0.66	-0.31	
13,818.0	90.80	269.68	6,880.7	169.0	-7,003.6	7,005.6	0.70	0.59	-0.36	
13,913.0	91.61	269.55	6,878.7	168.4	-7,098.6	7,100.6	0.86	0.85	-0.14	
14,004.0	92.15	269.68	6,875.7	167.7	-7,189.5	7,191.5	0.61	0.59	0.14	
14,061.9	92.15	269.68	6,873.6	167.4	-7,247.3	7,249.3	0.00	0.00	0.00	
Projected BHL 2412'FSL, 150'FWL, SEC.7										
14,062.0	92.15	269.68	6,873.6	167.4	-7,247.5	7,249.4	0.00	0.00	0.00	

Design Targets										
Target Name	Dip Angle (°)	Dip Dir. (°)	TVD (ft)	+N/-S (ft)	+E/-W (ft)	Northing (usft)	Easting (usft)	Latitude	Longitude	
- hit/miss target										
- Shape										
SHL 2166'FSL, 2365'FW	0.00	0.00	1.0	0.0	0.0	1,362,799.15	3,257,757.90	40.325596	-104.575510	
- survey hits target center										
- Point										
Projected BHL 2412'FSL	0.00	0.00	6,880.0	165.6	-7,247.6	1,362,889.13	3,250,509.33	40.326048	-104.601504	
- survey misses target center by 6.7ft at 14061.9ft MD (6873.6 TVD, 167.4 N, -7247.3 E)										
- Point										

Survey Annotations					
Measured Depth (ft)	Vertical Depth (ft)	Local Coordinates			
		+N/-S (ft)	+E/-W (ft)	Comment	
6,971.0	6,771.1	249.0	-181.7	TPZ - 60° Incl. in Curve - 2417'FSL, 2183'FWL, Sec.8	
7,605.0	6,893.9	260.8	-792.9	Deepest TVD Drilled - 6893.93' TVD	

Checked By: _____	Approved By: _____	Date: _____
-------------------	--------------------	-------------