

TEXACO INC.

Well location E.H. DICKENS TRUST WELL #31-1, located as shown in the NW 1/4 NE 1/4 of Section 31, T9N, R77W, 6th P.M. Jackson County, Colorado.

BASIS OF ELEVATION

BENCH MARK LOCATED IN THE SW 1/4 OF SECTION 23, T9N, R77W, 6th P.M. TAKEN FROM THE JOHNNY MOORE MOUNTAIN QUADRANGLE, COLORADO, 7.5 MINUTE QUAD. (TOPOGRAPHICAL MAP). PUBLISHED BY THE UNITED STATES DEPARTMENT OF THE INTERIOR, GEOLOGICAL SURVEY. SAID ELEVATION IS SHOWN AS BEING 8150 FEET. ELEVATION OF 8149 AS MARKED ON CAP WHICH WAS USED, DIFFERS 1' FROM THAT SHOWN ON THE QUADRANGLE.



RECEIVED

SEP 5 1990

OIL & GAS CONS. COMM.



CERTIFICATE

THIS IS TO CERTIFY THAT THE ABOVE PLAT WAS PREPARED FROM FIELD NOTES OF ACTUAL SURVEYS MADE BY ME OR UNDER MY SUPERVISION AND THAT THE SAME ARE TRUE AND CORRECT TO THE BEST OF MY KNOWLEDGE AND BELIEF.

*Robert L. Gray*  
REGISTERED LAND SURVEYOR  
REGISTRATION NO. 17492  
STATE OF COLORADO

REVISED 8-27-80 F.D.M.

UTAH ENGINEERING & LAND SURVEYING

P. O. BOX 1758 - 85 SOUTH - 200 EAST

VERNAL, UTAH - 84078

SCALE 1" = 1000' DATE 8-24-90

PARTY J.T.K. R.D. T.D.H.

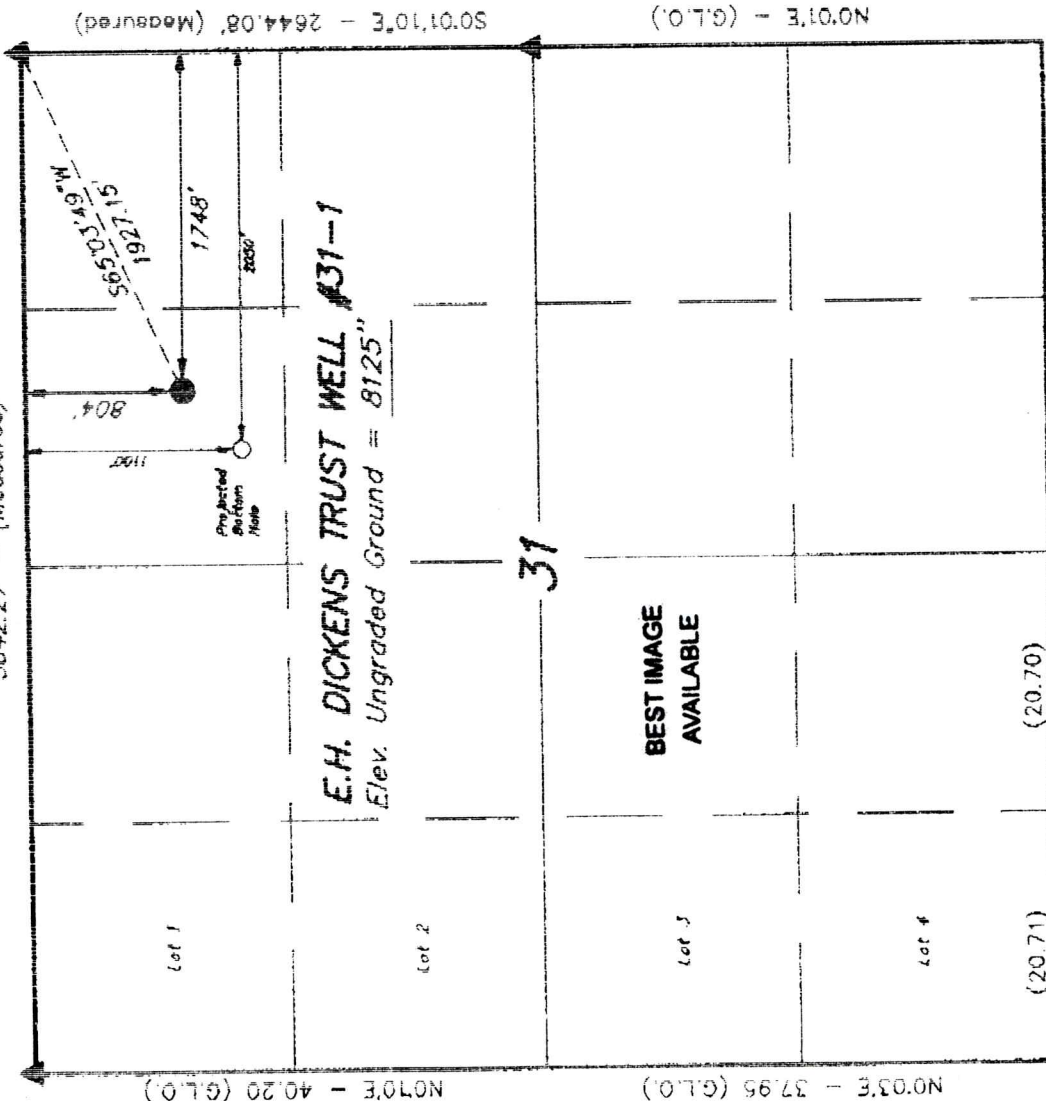
REFERENCES G.L.O. PLAT

WEATHER WARM, CLEAR

FILE TEXACO, INC.

T9N, R77W, 6th P.M.

S89°43'W - G.L.O. (Basis of Bearings)  
5642.27' - (Measured)



S89°03'E - 41.65 (G.L.O.)

S88°47'E - (G.L.O.)

NOTE:  
PROJECTED BOTTOM HOLE BEARS S45°25'40"W  
424.09' FROM THE PROPOSED SURFACE HOLE

▲ = SECTION CORNERS LOCATED. (Bross Copy)