		<b>GAMMA RAY / CCL CEMENT BOND VDL</b>	
Company: Noble Energy Production Inc.		Company: Noble Energy Production Inc.	
Well: Ehrlich 1		Well: Ehrlich 1	
Field: Wattenberg		Field: Wattenberg	
County: Weld		County: Weld	
State: Colo.		State: Colo.	
Location: SEC 4 TWP 4N RGE 64W		C / SE / NW	
Permanent Datum: GL		Elevation: 4701'	
Log Measured From: KB		Elevation: 4712'	
Drilling Measured From: KB		D.F. 7/4	
Date: November 7, 2005		GL 4701'	
Run Number: 6760		One	
Depth Driller: 5435'			
Depth Logger: 5432-5000'			
Bottom Logged Interval: 2000-4'			
Top Log Interval: water			
Open Hole Size: water			
Type Fluid: water			
Density / Viscosity: water			
Max. Recorded Temp: water			
Estimated Cement Top: water			
Time Well Ready: water			
Time Logger on Bottom: water			
Equipment Number: T2 TEKTRONIX TEKCL			
Location: WICR50-WICR53 ESMD5+ESMD			
Recorded By: R Messer			
Witnessed By: Casey Ruppel			
Run Number: 6760		From To Size Weight From To	
Casing Record: 6760		From To Size Weight From To	
Surface String: 6760		From To Size Weight From To	
Prod. String: 6760		From To Size Weight From To	
Production String: 6760		From To Size Weight From To	
Time: 6760		From To Size Weight From To	

All interpretations are opinions based on inferences from electrical or other measurements and we cannot and do not guarantee the accuracy or correctness of any interpretation, and we shall not, except in the case of gross or willful negligence on our part, be liable or responsible for any loss, costs, damages, or expenses incurred or sustained by anyone resulting from any interpretation made by any of our officers, agents or employees. These interpretations are also subject to our general terms and conditions set out in our current Price Schedule.

Comments



123-05150

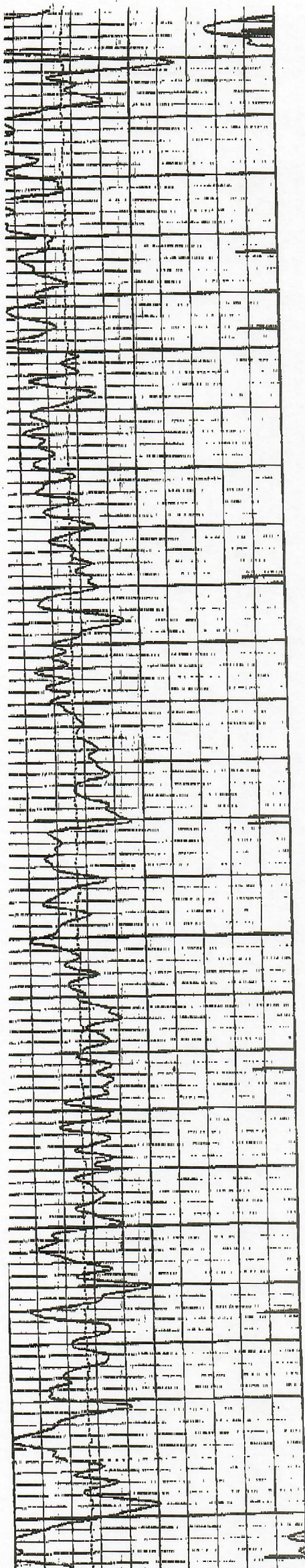
THANK-YOU FOR USING "NUEX" WIRELINE SERVICES INC. !!!  
970.526.1084 FAX:970.526.1085

Database File: nobehr1.db  
Dataset Pathname: pass2  
Presentation Format: bond  
Dataset Creation: Mon Nov 07 07:44:16 2005 by Log 6.2\_B4  
Charted by: Depth in Feet scaled 1:240

9	CCL	0	0	Amplitude (Pipe Bond) (mV)	100	300	Variable Density	120
30	Gamma Ray (GAPI)	130	0	Amplified Amplitude (mV)	10			
30	Line Speed (ft/min)	230						



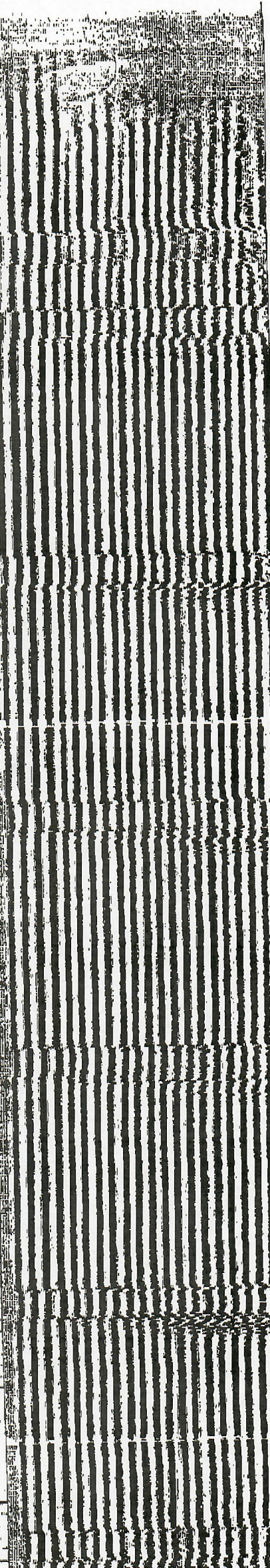
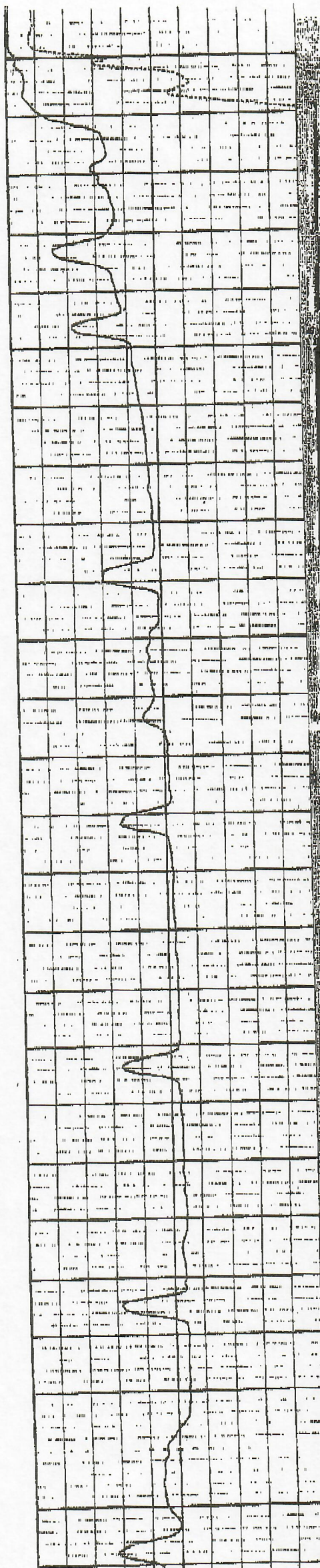




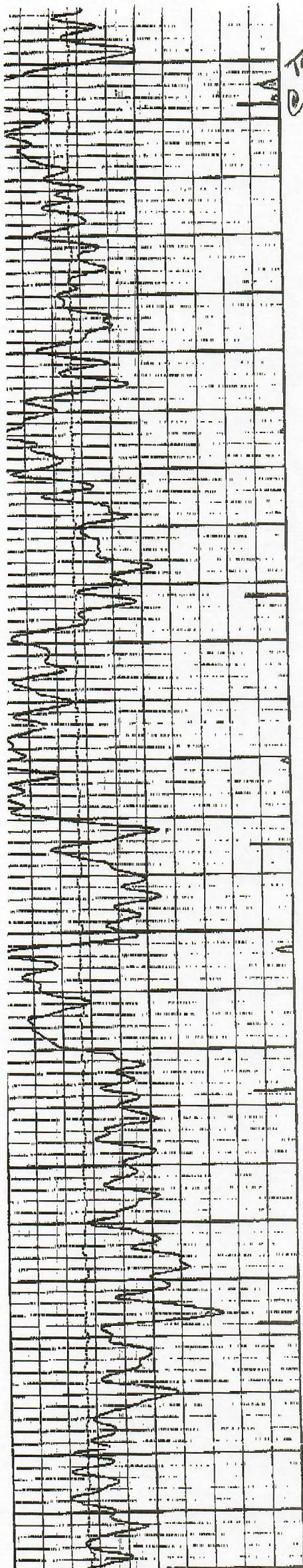
0

100

200





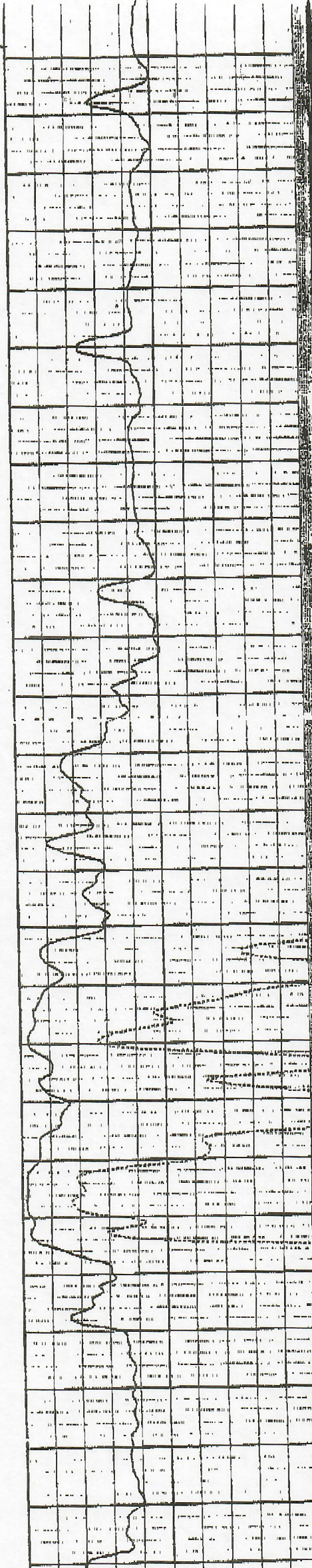


Tag TOC  
@ 258

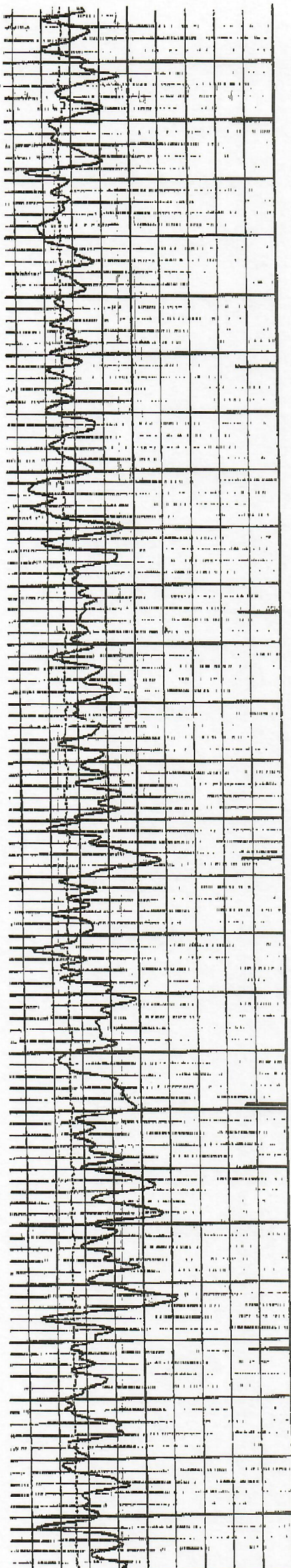
300

400

500



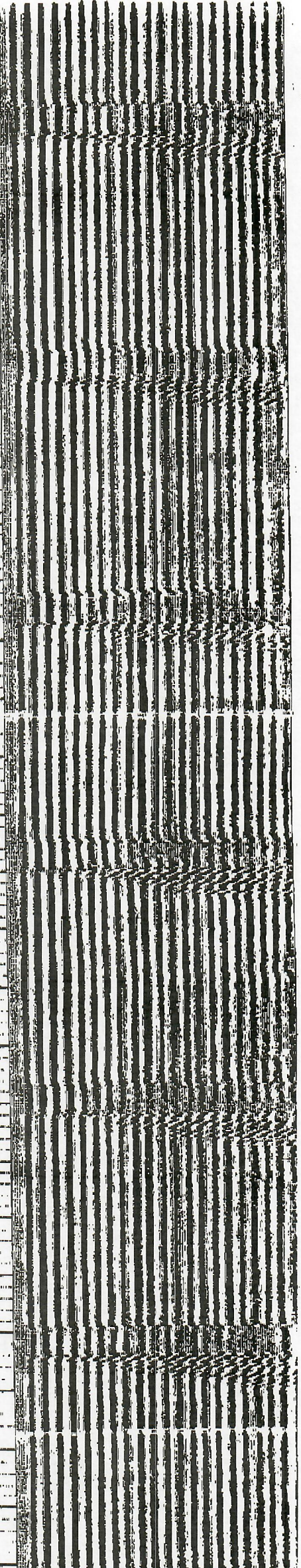
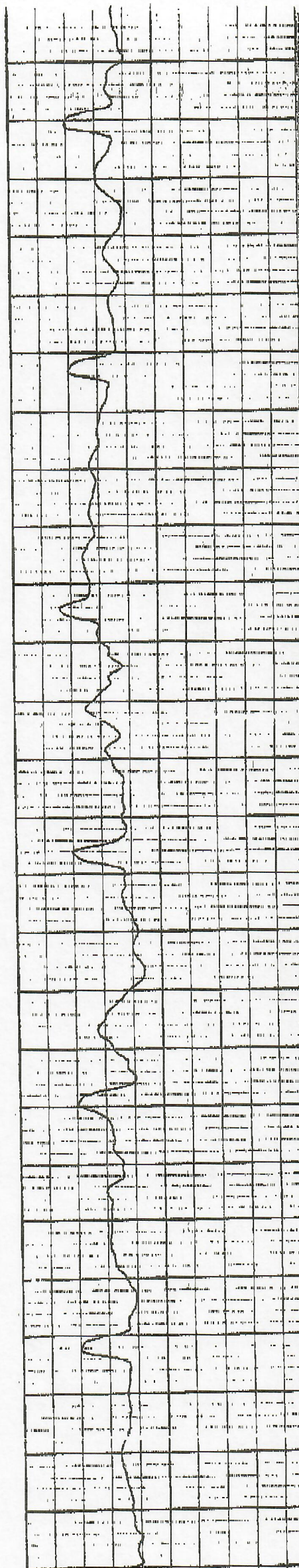




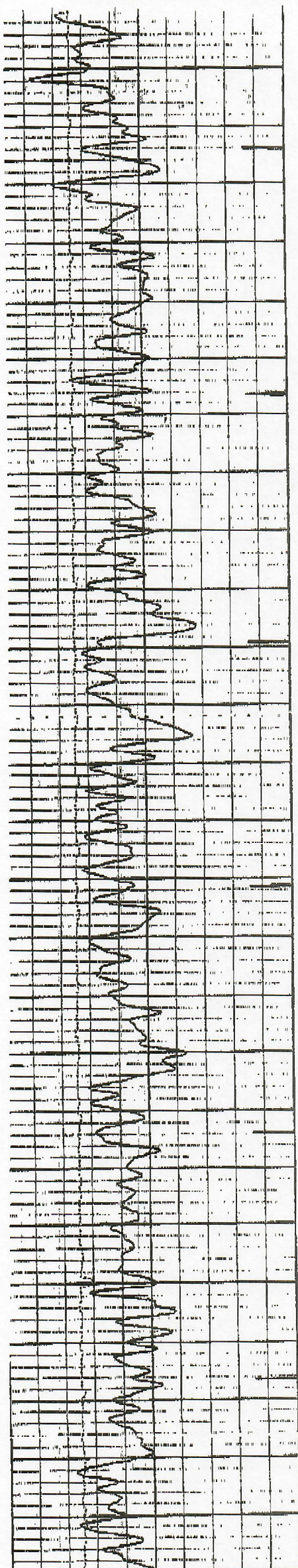
500

600

700



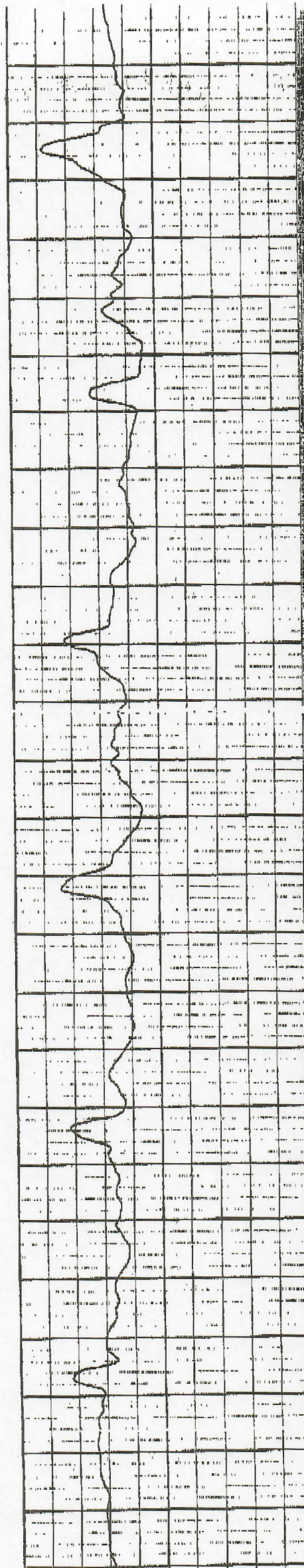




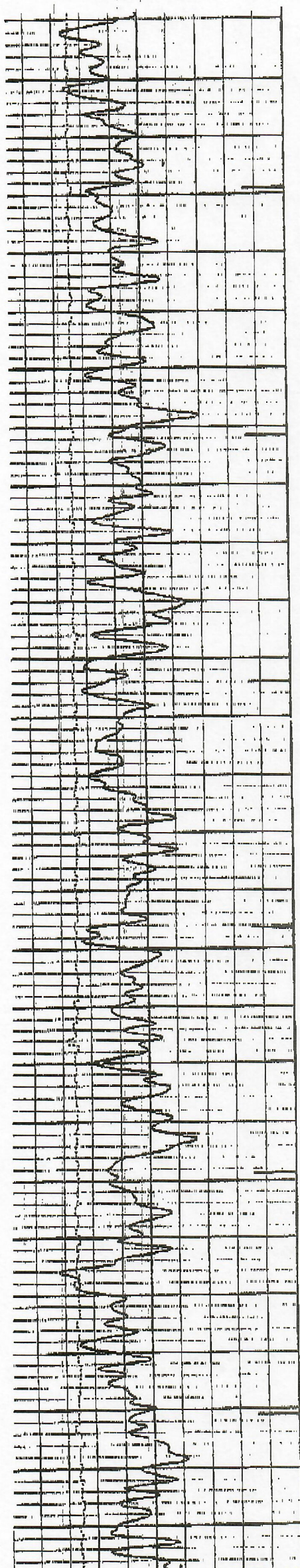
800

900

1000



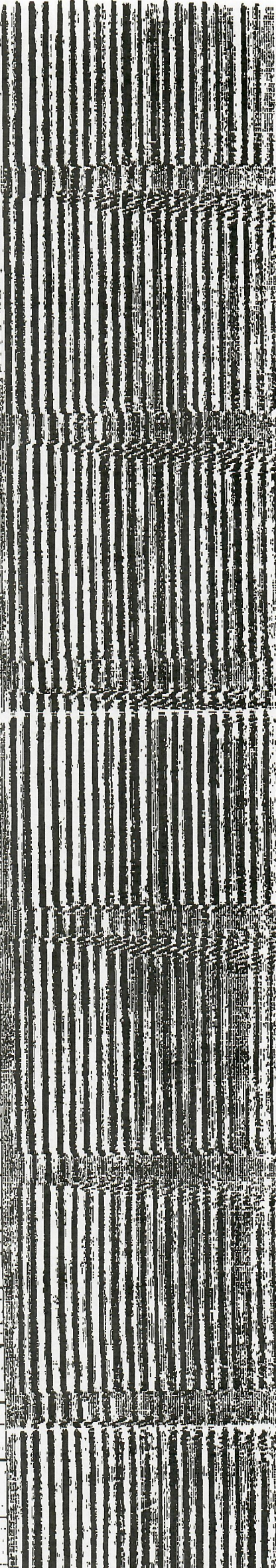
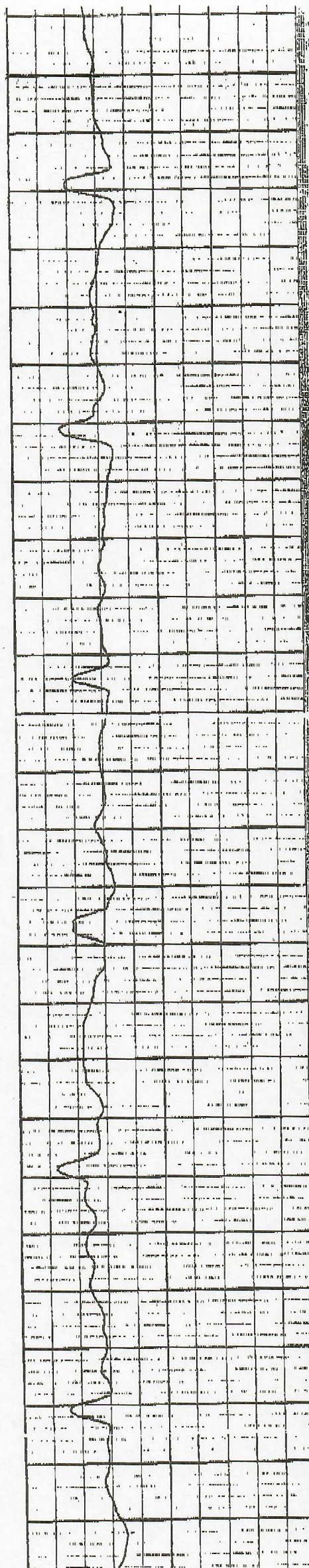




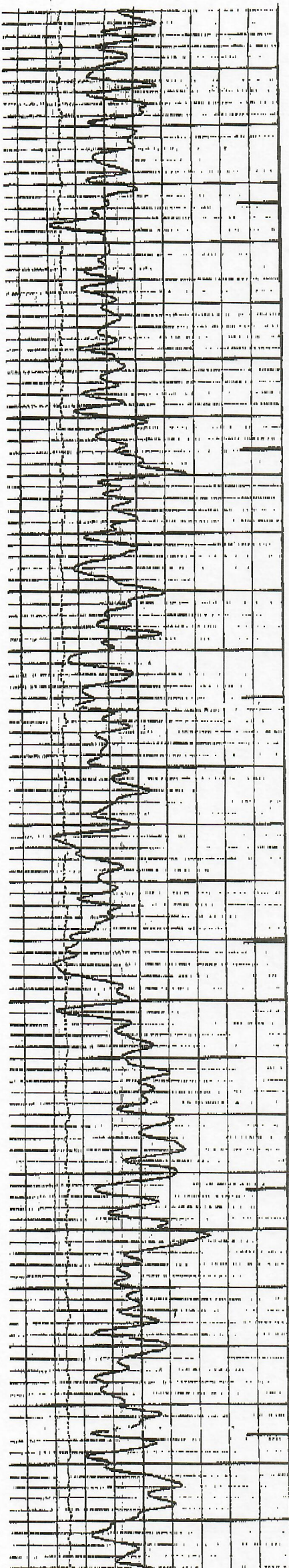
1000

1100

1200



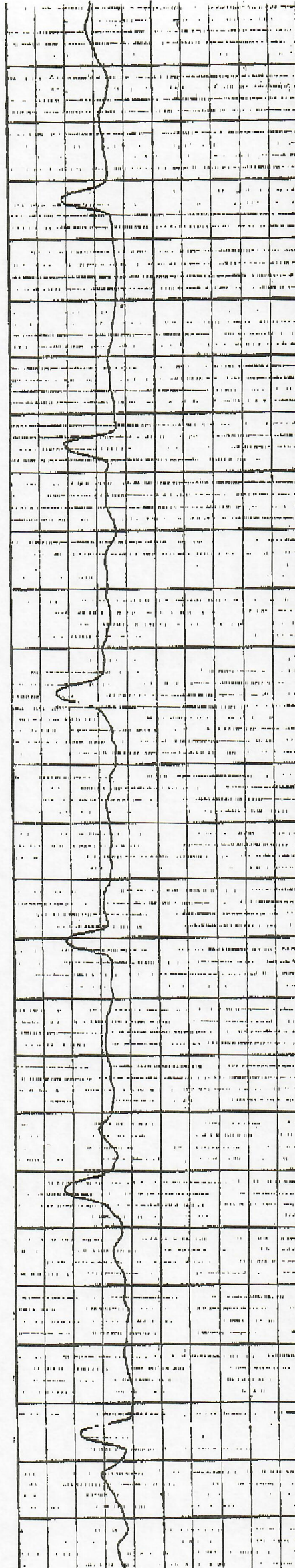




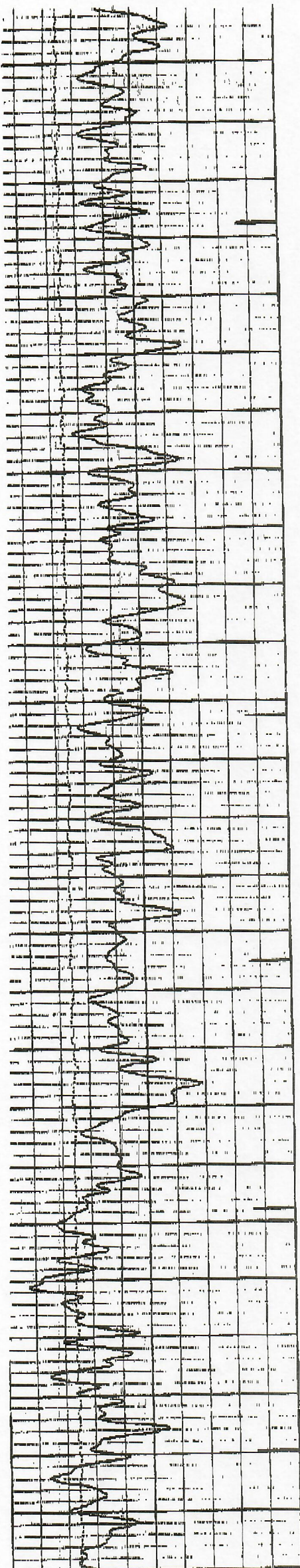
1300

1400

1500



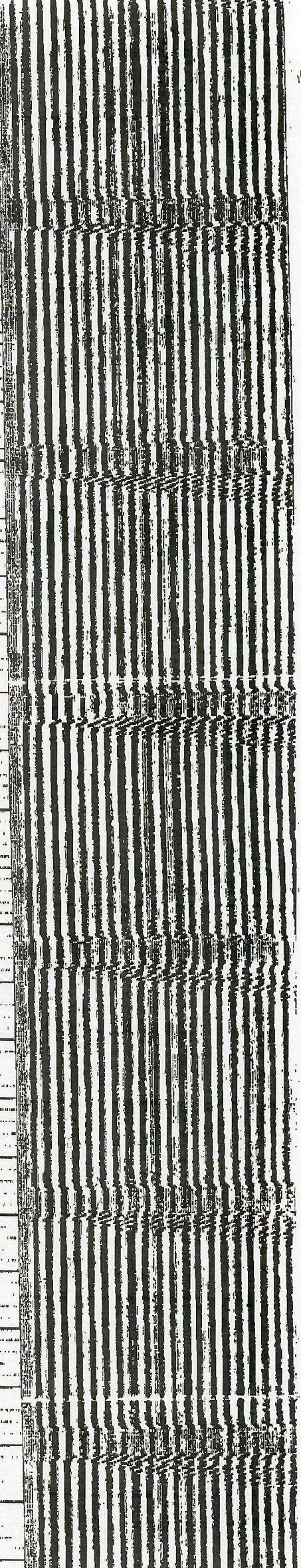
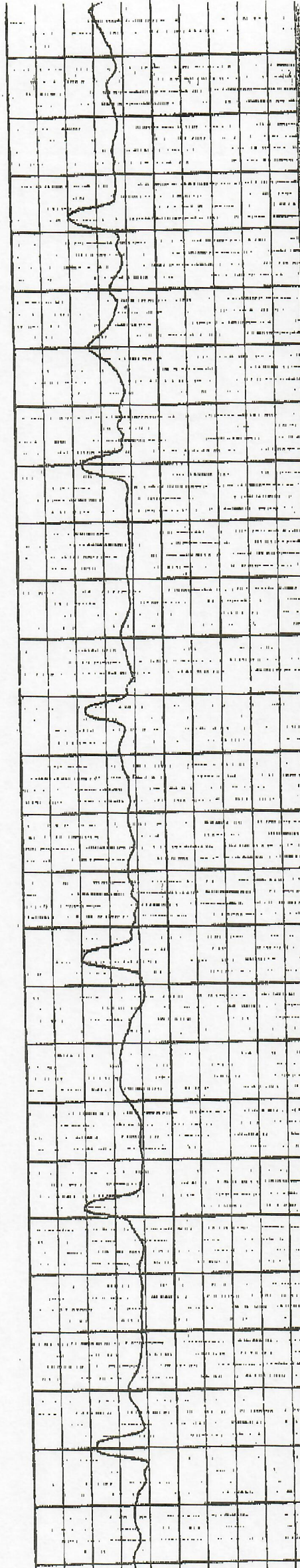




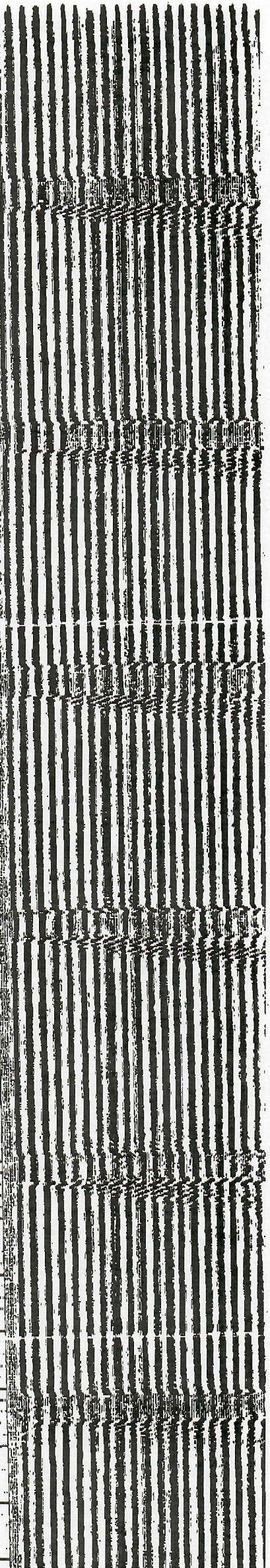
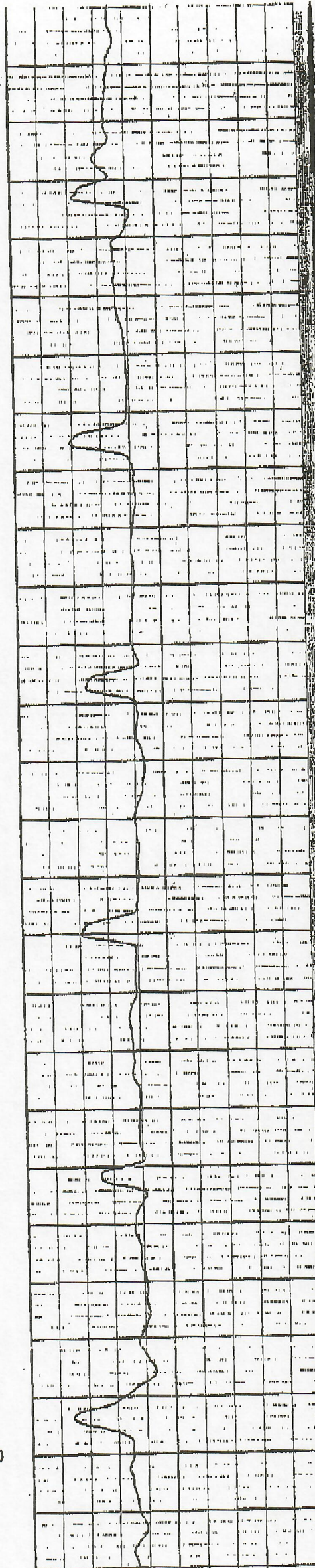
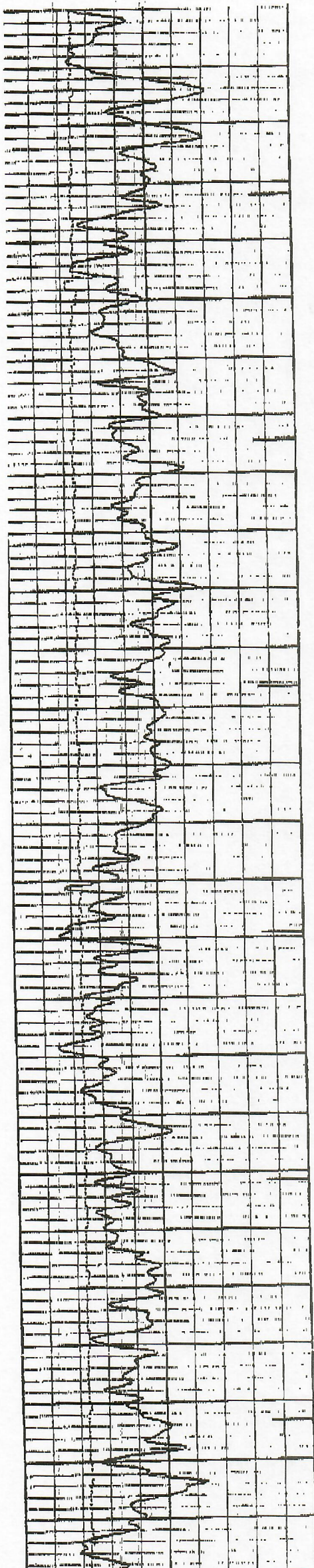
1500

1600

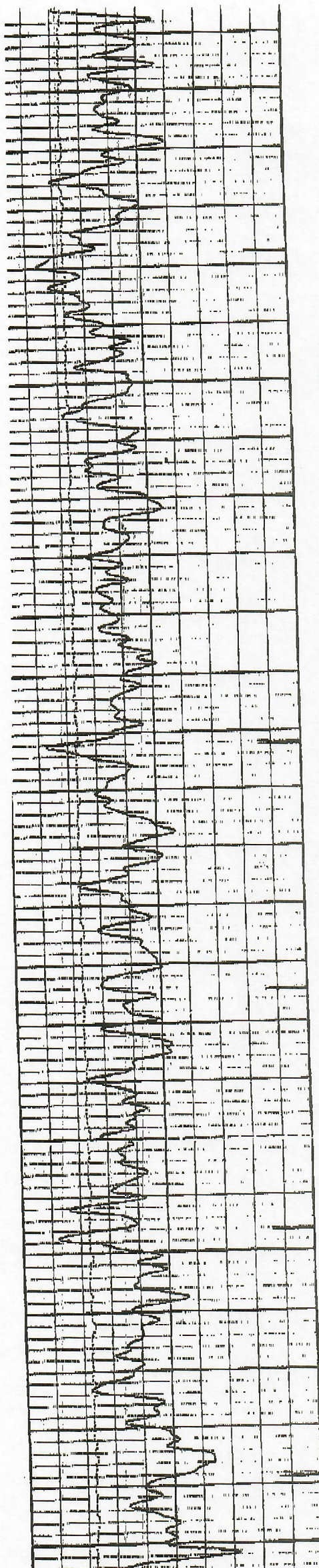
1700







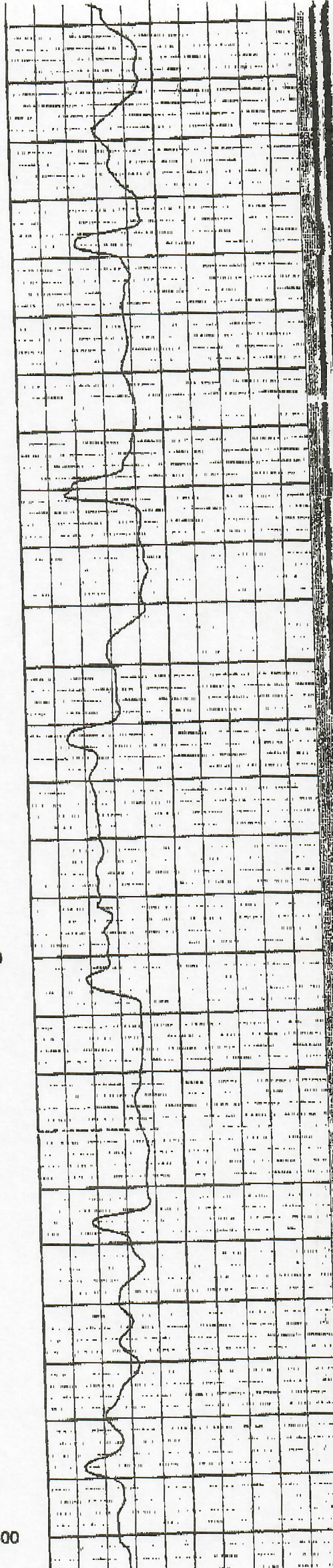




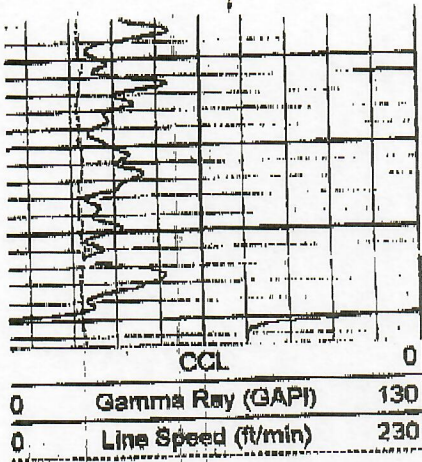
2100

2200

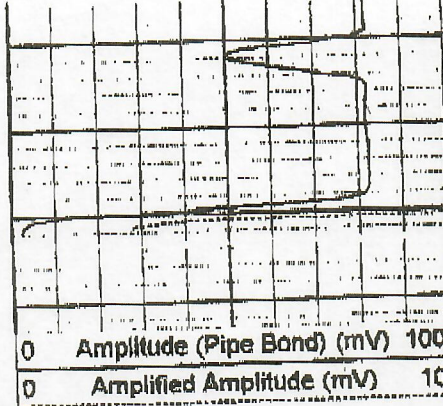
2300







2600



Variable Density

1200

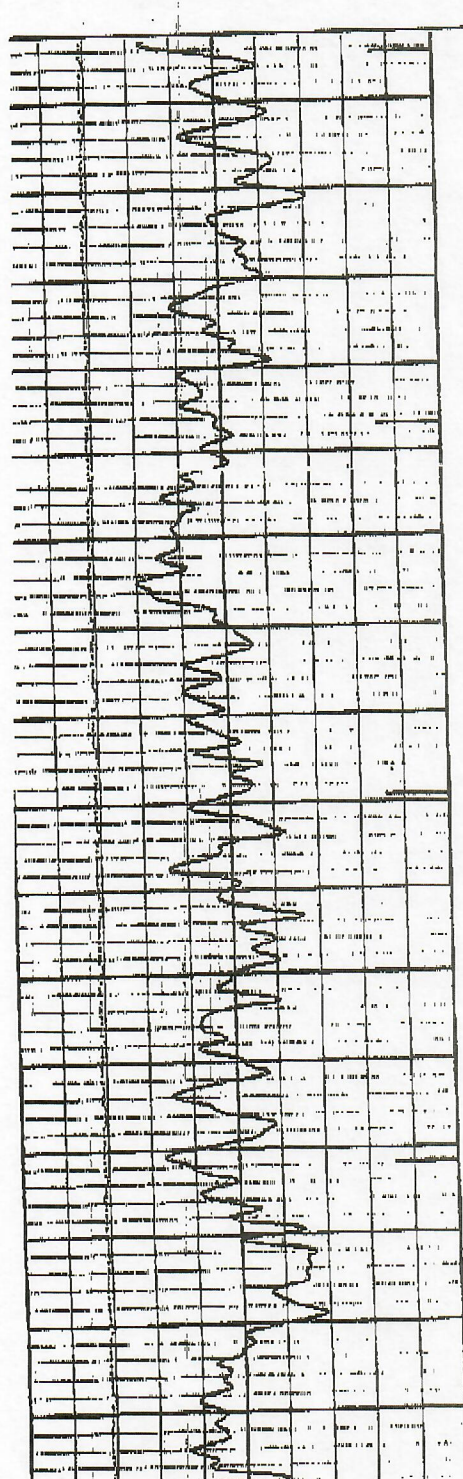
Database File: nobehr1.db  
Dataset Pathname: pass1  
Presentation Format: bond  
Dataset Creation: Mon Nov 07 07:31:00 2005 by Log 6.2\_B4  
Charted by: Depth in Feet scaled 1:240

CCL	0
Gamma Ray (GAPI)	130
Line Speed (ft/min)	230

Amplitude (Pipe Bond) (mV)	100	300
Amplified Amplitude (mV)	10	

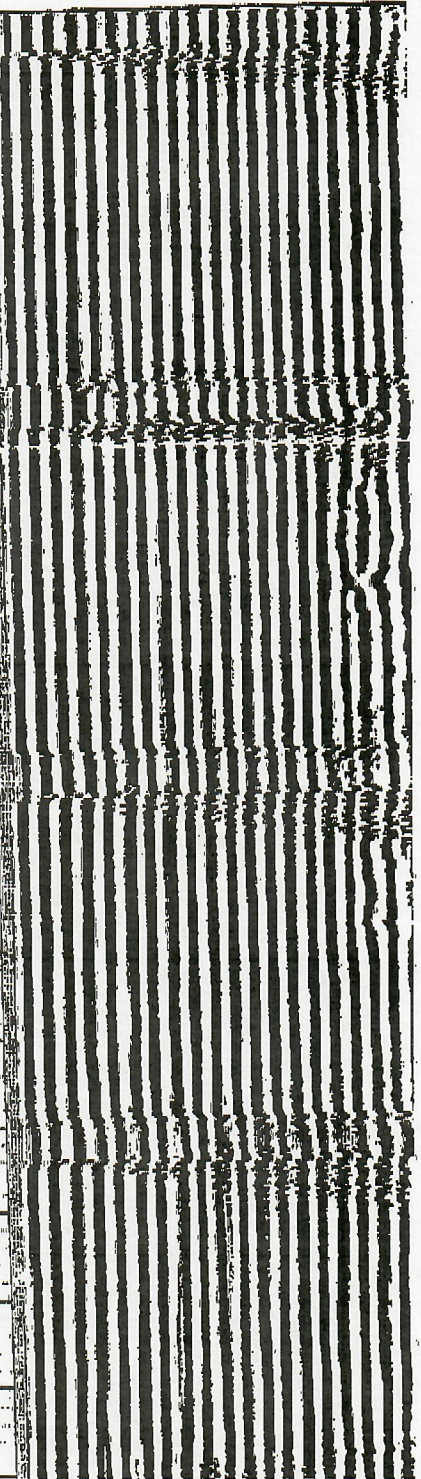
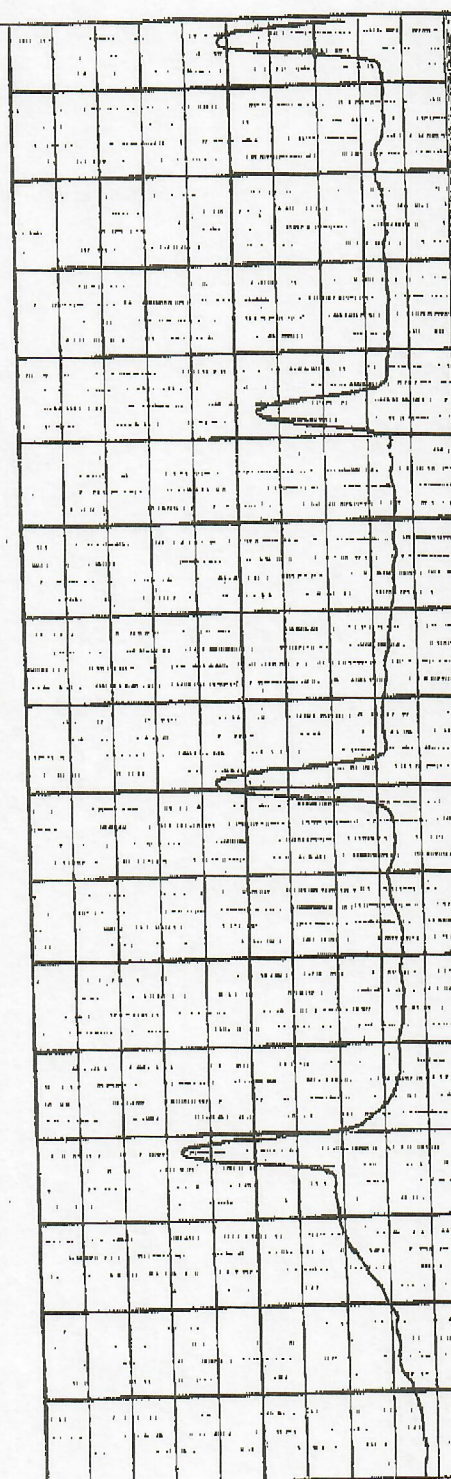
Variable Density

1200

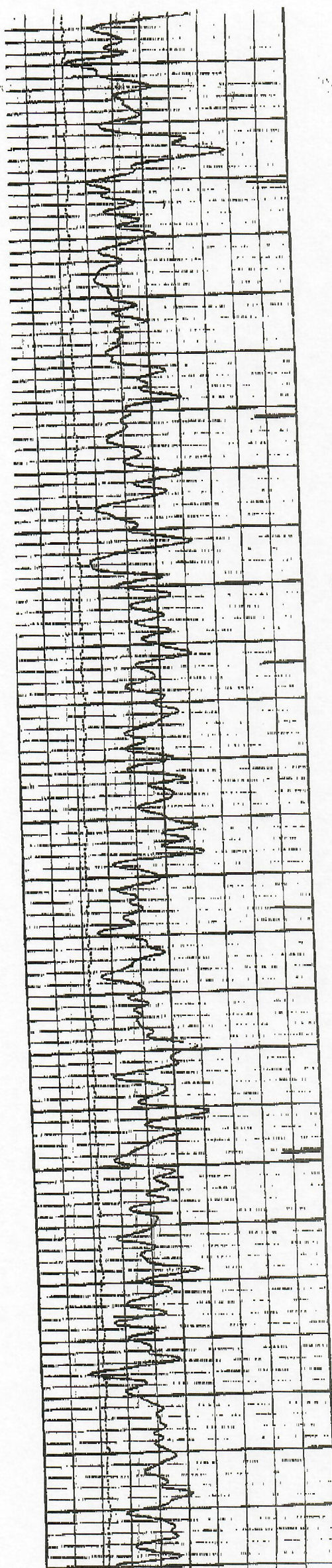


5000

5100

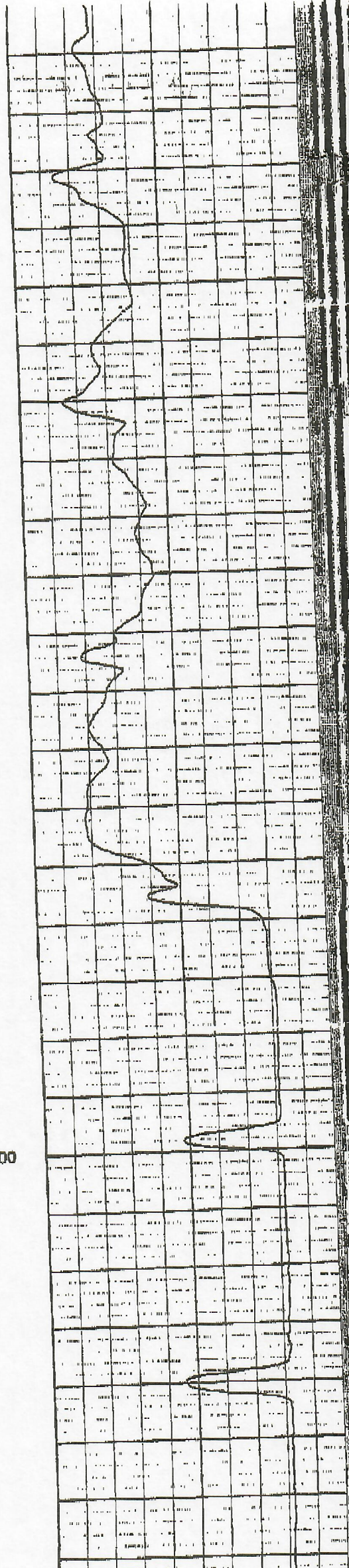






2400

2500





1625 Broadway  
Suite 2000  
Denver, CO 80202

Tel: 303.389.3600

Fax: 303.389.3660

www.nobleenergyinc.com



**noble energy production, inc.**  
*a subsidiary of noble energy, inc.*

**Fax**

**Date:** 11/7/05

**To:** Larry Robbins

**From:** Jo Reavis

**Company:** COGCC

**Sender's Phone:** (303) 389-3655

**Receiver's Phone:** (303) 894-2100

**Sender's Fax:**

**Receiver's Fax:** (303) 894-3109

**Total No. Pages:** 13

**Subject:** CBL on Ehrlich 1, SENW-4-4N-64W

☐ Urgent

☐ For Review

☐ Please Comment

☐ Please Reply

☐ Please Recycle

**Message:**

Please take a look at this & call me ASAP. We've tagged the top of cement @ 258'. We have 10.5# premium lite cement from 2455' to 458', then we pumped 15.8# cement. Is this enough total coverage for isolating the casing shoe, or do we need to pump more?



DML 13,646

# SCHLUMBERGER WELL SURVEYING CORPORATION

HOUSTON, TEXAS



## Electrical Log

COUNTY: WELD FIELD OR LOCATION: WILDCAT LOCATION: SEC. 4-4N-6W WELL: EHRICH COMPANY: SHARPLES OIL	COMPANY: SHARPLES OIL CO.	Location of Well
	WELL: EHRICH #1	ES (ML)
	FIELD: WILDCAT	
	LOCATION: SEC. 4-4N-6W	CS 56 NW
	COUNTY: WELD	
	STATE: COLORADO	
FILING No. DML 13,646		Elevation: D.F. 4709 K.B. 4712 or G.L. 4701

RUN NO. ONE

Date	7-31-54					
First Reading	8763					
Last Reading	220					
Footage Measured	8543					
Cog Shoe Setting	220					
Cog Shoe Driller	218					
Depth Reached	8764					
Bottom Driller	8760					
Depth Datum	R.D.B.					
Mud Nature	GYP BASE					
Density	9.8					
Viscosity	48					
Resistivity	1.6 @ 96 °F.	@	@	@	@	@
Resistivity MHT	0.22 @ 209 °F.	@	@	@	@	@
pH	7 @ °F.	@	@	@	@	@
Water Loss	10.9 CC/30 Min.	CC/30 Min.	CC/30 Min.	CC/30 Min.	CC/30 Min.	CC/30 Min.
Maximum Temp. °F.	209					
Bit Size	7" - 8060; 8 1/2" FROM 8060' TO TD					
Spacings - AM	16"					
AM	64"					
AO	18' 8"					
E.S. Rig Time	2 HOURS					
Truck No.	758 FORT MORGAN					
Recorded by	JULIUS					
Witnessed by	CORRETT					

REMARKS

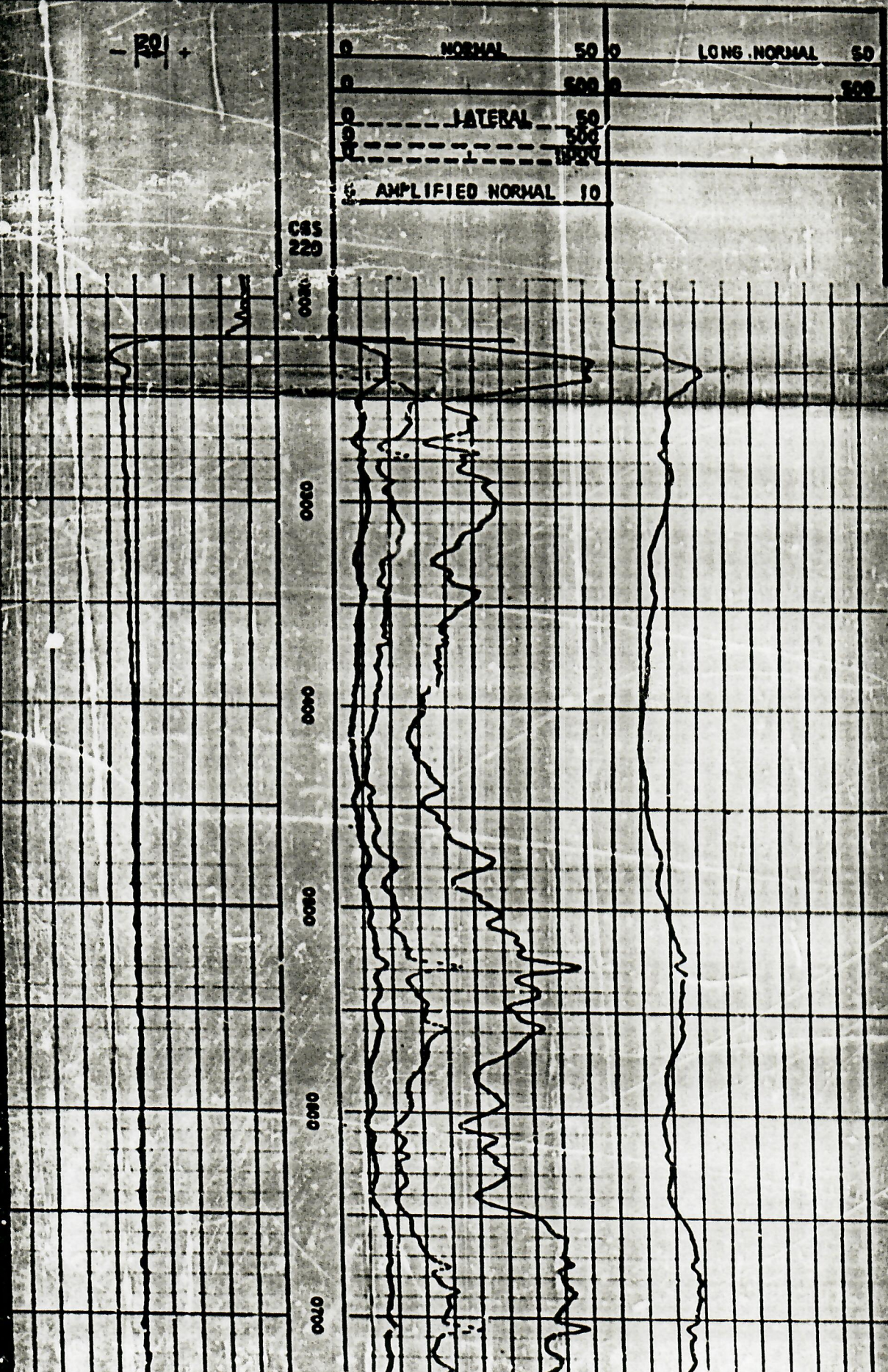
MUD SAMPLE FROM MUD PIT.

SUNRAY OIL CORPORATION



SPONTANEOUS POTENTIAL millivolt	DEPTH feet	RESISTIVITY ohms. m <sup>2</sup> /m.
------------------------------------	---------------	---

1" = 100'





SB5.EXE

LOCATION: SE1/4 OF NW1/4 OF SEC. 4, T.4N., R.64W. <1980 NSL, 1980 WSL>

Ground Elevation: 4698

Number of Acres: 40

AQUIFER	ELEVATION		NET SAND	DEPTH TO		ANNUAL APPROP A-F	STATUS
	BOT.	TOP		BOT.	TOP		
UPPER DAWSON	---	---	---	---	---	---	---
LOWER DAWSON	---	---	---	---	---	---	---
DENVER	---	---	---	---	---	---	---
UPPER ARAPAHOE	---	---	---	---	---	---	---
LOWER ARAPAHOE	---	---	---	---	---	---	---
LARAMIE-FOX HILLS	4384	4648	171.5	314	50	10.29	NNT

note: E indicates location is at aquifer boundary and values  
may be more approximate.

want to do another (Y/N) <press P to print>





8/8/05  
Jo Reavis called  
for casing repair  
remedial request.  
cement from 425' up  
into surface casing  
required to protect  
offset H2O well. Run  
CBL to verify  
coverage  
MC

Selected Items Report

Oil and Gas Wells Selected		
Filter Results by Formation		<div><div>CODL</div><div>JSND</div><div>NB-CD</div></div> <div>Include</div> <div>Filter</div>
WELL DESCRIPTION	LOCATION	WELL INFORMATION
05-123-10753, DONES 1 PATINA OIL & GAS CORPORATION	NWSW 3 4N -64W (6)	Sidetrack TD Formation Status 00 6936 CODL SI 00 6936 NBRR PR
05-123-14510, MILLAGE 12-3 MERIT ENERGY COMPANY	SWNW 3 4N -64W (6)	Sidetrack TD Formation Status 00 6955 NB-CD SI
05-123-17160, ATKINSON-GALE 3-13 PATINA OIL & GAS CORPORATION	SWSW 3 4N -64W (6)	Sidetrack TD Formation Status 00 6980 CODL PR
05-123-23068, FLACK 5 MERIT ENERGY COMPANY	E2NW 3 4N -64W (6)	Sidetrack TD Formation Status
05-123-11013, MILLEGE 1 MERIT ENERGY COMPANY	NWNW 3 4N -64W (6)	Sidetrack TD Formation Status 00 6920 CODL PR
05-123-11735, CONNELL 4 PATINA OIL & GAS CORPORATION	SWSW 4 4N -64W (6)	Sidetrack TD Formation Status 00 7036 CODL PR
05-123-05150, EHRLICH 1 PATINA OIL & GAS CORPORATION	SEnw 4 4N -64W (6)	Sidetrack TD Formation Status 00 7772 CODL SI
05-123-11007, MCCLINTOCK 1 PATINA OIL & GAS CORPORATION	NWSE 4 4N -64W (6)	Sidetrack TD Formation Status 00 6952 CODL PR
05-123-21176, CONNELL C 4-11 PATINA OIL & GAS CORPORATION	NESW 4 4N -64W (6)	Sidetrack TD Formation Status 00 7023 CODL SI 00 7023 NBRR PR
05-123-21179, MCCLINTOCK C 4-15 PATINA OIL & GAS CORPORATION	SWSE 4 4N -64W (6)	Sidetrack TD Formation Status 00 7050 CODL PR 00 7050 NBRR PR
05-123-21715, CONNELL C 4-5 PATINA OIL & GAS CORPORATION	SWNW 4 4N -64W (6)	Sidetrack TD Formation Status 00 7050 CODL SI 00 7050 NBRR PR
05-123-10819, SITZMAN 1 PATINA OIL & GAS CORPORATION	NWNE 4 4N -64W (6)	Sidetrack TD Formation Status 00 6960 CODL PR
05-123-10820, CONNELL 2 PATINA OIL & GAS CORPORATION	NWSW 4 4N -64W (6)	Sidetrack TD Formation Status 00 7025 CODL PR
05-123-10831, CONNELL 1 PATINA OIL & GAS CORPORATION	NWNW 4 4N -64W (6)	Sidetrack TD Formation Status 00 6965 CODL PR



05-123-10832, CONNELL 3 PATINA OIL & GAS CORPORATION	SESW 4 4N -64W (6)	<b>Sidetrack TD Formation Status</b> 00 6974 CODL SI 00 6974 NBRR PR
05-123-10833, WILMOTH 1 PATINA OIL & GAS CORPORATION	SESE 4 4N -64W (6)	<b>Sidetrack TD Formation Status</b> 00 6980 CODL PR
05-123-10834, SITZMAN 2 PATINA OIL & GAS CORPORATION	SENE 4 4N -64W (6)	<b>Sidetrack TD Formation Status</b> 00 6925 CODL SI 00 6925 NBRR PR
05-123-18767, CONNELL 4-514 SNYDER OIL CORP	SWNW 4 4N -64W (6)	<b>Sidetrack TD Formation Status</b>
05-123-18768, CONNELL 4-1114 SNYDER OIL CORP	NESW 4 4N -64W (6)	<b>Sidetrack TD Formation Status</b>
05-123-17894, SITZMAN 4-114 PATINA OIL & GAS CORPORATION	NENE 4 4N -64W (6)	<b>Sidetrack TD Formation Status</b> 00 7014 CODL PR 00 7014 NB-CD PR
05-123-17895, SITZMAN 4-714 PATINA OIL & GAS CORPORATION	SWNE 4 4N -64W (6)	<b>Sidetrack TD Formation Status</b> 00 7028 CODL PR 00 7028 NB-CD PR 00 7028 NBRR
05-123-17975, CONNELL 4-314 PATINA OIL & GAS CORPORATION	NENW 4 4N -64W (6)	<b>Sidetrack TD Formation Status</b> 00 7064 CODL PR 00 7064 NBRR
05-123-17976, CONNELL 4-514 SNYDER OIL CORP	SWNW 4 4N -64W (6)	<b>Sidetrack TD Formation Status</b>
05-123-17977, CONNELL 4-1114 SNYDER OIL CORP	NESW 4 4N -64W (6)	<b>Sidetrack TD Formation Status</b>
05-123-18162, WILMOTH 4-914 PATINA OIL & GAS CORPORATION	NESE 4 4N -64W (6)	<b>Sidetrack TD Formation Status</b> 00 6982 CODL PR 00 6982 NB-CD PR 00 6982 NBRR PR
05-123-18163, WILMOTH 4-1514 SNYDER OIL CORP	SWSE 4 4N -64W (6)	<b>Sidetrack TD Formation Status</b>
05-123-16569, KUIS C 5-7 PATINA OIL & GAS CORPORATION	SWNE 5 4N -64W (6)	<b>Sidetrack TD Formation Status</b> 00 7083 CODL PR
05-123-16882, KUIS C 5-1 PATINA OIL & GAS CORPORATION	NENE 5 4N -64W (6)	<b>Sidetrack TD Formation Status</b> 00 7082 CODL PR
05-123-12781, SMITH-REEVES 42-5 MERIT ENERGY COMPANY	SENE 5 4N -64W (6)	<b>Sidetrack TD Formation Status</b> 00 7040 NB-CD PR
05-123-14207, WILMOTH PM C 5-3 PATINA OIL & GAS CORPORATION	NENW 5 4N -64W (6)	<b>Sidetrack TD Formation Status</b> 00 7101 CODL PR 00 7101 NB-CD PR 00 7101 NBRR PR
05-123-10835, REISTAD 1 PATINA OIL & GAS CORPORATION	SESE 5 4N -64W (6)	<b>Sidetrack TD Formation Status</b> 00 7030 CODL SI 00 7030 NBRR PR



05-123-21177, LEVI C 5-15 PATINA OIL & GAS CORPORATION	SWSE 5 4N -64W (6)	<b>Sidetrack TD Formation Status</b> 00 7102 CODL PR 00 7102 NBRR PR
05-123-21178, REISTAD C 5-9 PATINA OIL & GAS CORPORATION	NESE 5 4N -64W (6)	<b>Sidetrack TD Formation Status</b> 00 7127 CODL PR 00 7127 NBRR PR
05-123-12536, WILMOTH 5-1 PETRO-CANADA RESOURCES (USA) INC	SENW 5 4N -64W (6)	<b>Sidetrack TD Formation Status</b>
05-123-11117, HINKLE 1 PATINA OIL & GAS CORPORATION	NWSE 5 4N -64W (6)	<b>Sidetrack TD Formation Status</b> 00 7040 CODL SI 00 7040 NBRR PR
05-123-22051, WILMOTH C 5-6 PATINA OIL & GAS CORPORATION	SENW 5 4N -64W (6)	<b>Sidetrack TD Formation Status</b> 00 7113 CODL PR
05-123-22278, RUFF C 8-1 PATINA OIL & GAS CORPORATION	NENE 8 4N -64W (6)	<b>Sidetrack TD Formation Status</b> 00 7100 CODL PR
05-123-18371, RUFF 8-114 PATINA OIL & GAS CORPORATION	NENE 8 4N -64W (6)	<b>Sidetrack TD Formation Status</b> 00 7710 CODL SI 00 7710 JSND TA 00 7710 NBRR PR
05-123-11923, REINICK 2 PATINA OIL & GAS CORPORATION	NWNE 9 4N -64W (6)	<b>Sidetrack TD Formation Status</b> 00 7013 CODL PR
05-123-12617, SMITH 3 PATINA OIL & GAS CORPORATION	SENW 9 4N -64W (6)	<b>Sidetrack TD Formation Status</b> 00 7016 CODL PR
05-123-12637, REINICK 3 PATINA OIL & GAS CORPORATION	NENE 9 4N -64W (6)	<b>Sidetrack TD Formation Status</b> 00 6940 CODL PR
05-123-21929, SMITH C 9-19 PATINA OIL & GAS CORPORATION	NENW 9 4N -64W (6)	<b>Sidetrack TD Formation Status</b> 00 7146 CODL PR 00 7146 NBRR PR
05-123-11922, SMITH 1 PATINA OIL & GAS CORPORATION	NWNW 9 4N -64W (6)	<b>Sidetrack TD Formation Status</b> 00 7100 CODL PR
05-123-12604, SMITH 2 PATINA OIL & GAS CORPORATION	NENW 9 4N -64W (6)	<b>Sidetrack TD Formation Status</b> 00 7075 NBRR PR
05-123-11481, HOLMAN 32-1 MIZEL PETRO RESOURCES INC	SESE 32 5N -64W (6)	<b>Sidetrack TD Formation Status</b>
05-123-14406, CHITTENDEN 2-32 KERR-MCGEE ROCKY MOUNTAIN CORPORATION	SWSE 32 5N -64W (6)	<b>Sidetrack TD Formation Status</b> 00 7145 CODL PR
05-123-17815, ECKHARDT 33-15 PATINA OIL & GAS CORPORATION	SWSE 33 5N -64W (6)	<b>Sidetrack TD Formation Status</b> 00 7025 NB-CD PR
05-123-19328, SCHOTT B#33-13 PATINA OIL & GAS CORPORATION	SWSW 33 5N -64W (6)	<b>Sidetrack TD Formation Status</b> 00 7073 NB-CD PR
05-123-19483, SCHOTT B 33-11 PATINA OIL & GAS CORPORATION	NESW 33 5N -64W (6)	<b>Sidetrack TD Formation Status</b> 00 7032 CODL PR 00 7032 NB-CD PR
05-123-11037, JEWELL 1	NESE 33	<b>Sidetrack TD Formation Status</b>



PATINA OIL & GAS CORPORATION	5N -64W (6)	006908 CODL SI 006908 NBRR PR
05-123-10786, ECKHARDT 2 PATINA OIL & GAS CORPORATION	SESW 33 5N -64W (6)	Sidetrack TD Formation Status 006983 CODL PR
05-123-10836, ECKHARDT 1 PATINA OIL & GAS CORPORATION	SESE 33 5N -64W (6)	Sidetrack TD Formation Status 006915 CODL PR 006915 NB-CD PR
05-123-10837, MEISINGER 1 PATINA OIL & GAS CORPORATION	NWSW 33 5N -64W (6)	Sidetrack TD Formation Status 007000 CODL RC 007000 NB-CD PR
05-123-21772, BAILEY 14-34 MERIT ENERGY COMPANY	SWSW 34 5N -64W (6)	Sidetrack TD Formation Status 006999 CODL PR 006999 NB-CD PR

Facilities Selected			
FACILITY DESCRIPTION	LOCATION	PIT INFORMATION	
		Type	UnlinedStatus

Water Wells Selected From Map			
Filter Results by Depth <div>Greater than</div> <div>Filter</div>			

WELL DESCRIPTION	LOCATION	WELL INFORMATION			
		Depth	Top Perf	Bottom Perf	Aquifer
Receipt=9059296, Permit=0004831-- STRADLEY CLIFFORD V	NENE 5 4N-64W	40	0	0	GW
Receipt=9059654, Permit=0006621-- WATSON J P & P L	SWSE 5 4N-64W	150	0	0	GW
Receipt=0482864, Permit=0237968-- TARIN ADRIAN O	SWSE 5 4N-64W	375	75	375	KLF
Receipt=9058835, Permit=0001958-- RUFF WILBERT B.	NENE 8 4N-64W	120	0	0	GW
Receipt=0406335, Permit=0199247-- NELSON TIM	NENE 8 4N-64W	0	0	0	KLF
Receipt=9066413, Permit=0127686-- COX HARRIET L. & ERNEST	NENW 8 4N-64W	300	0	0	KLF
Receipt=0425741, Permit=0209380-- SHERBON WANDA K REVOCABLE TRUST	NESE 32 5N-64W	50	30	50	GW
Receipt=9059111, Permit=0004030-F- SCHLISSLER TED	NWSE 33 5N-64W	24	0	0	GW
Receipt=9061308, Permit=0012778-R- SCHOTT WILLIAM & AGNES M	SWSW 33 5N-64W	33	0	0	GW
Receipt=9062057, Permit=0014782-R- ECKHARDT J JIM	SWSW 33 5N-64W	12	0	0	GW
Receipt=9062058, Permit=0014783-R- ECKHARDT J JIM	SWSW 33 5N-64W	22	16	22	GW

Additional Water Wells (Not Mapped)			
Enter Section Township and Range (up to four sections) Section: Township: Range:			