

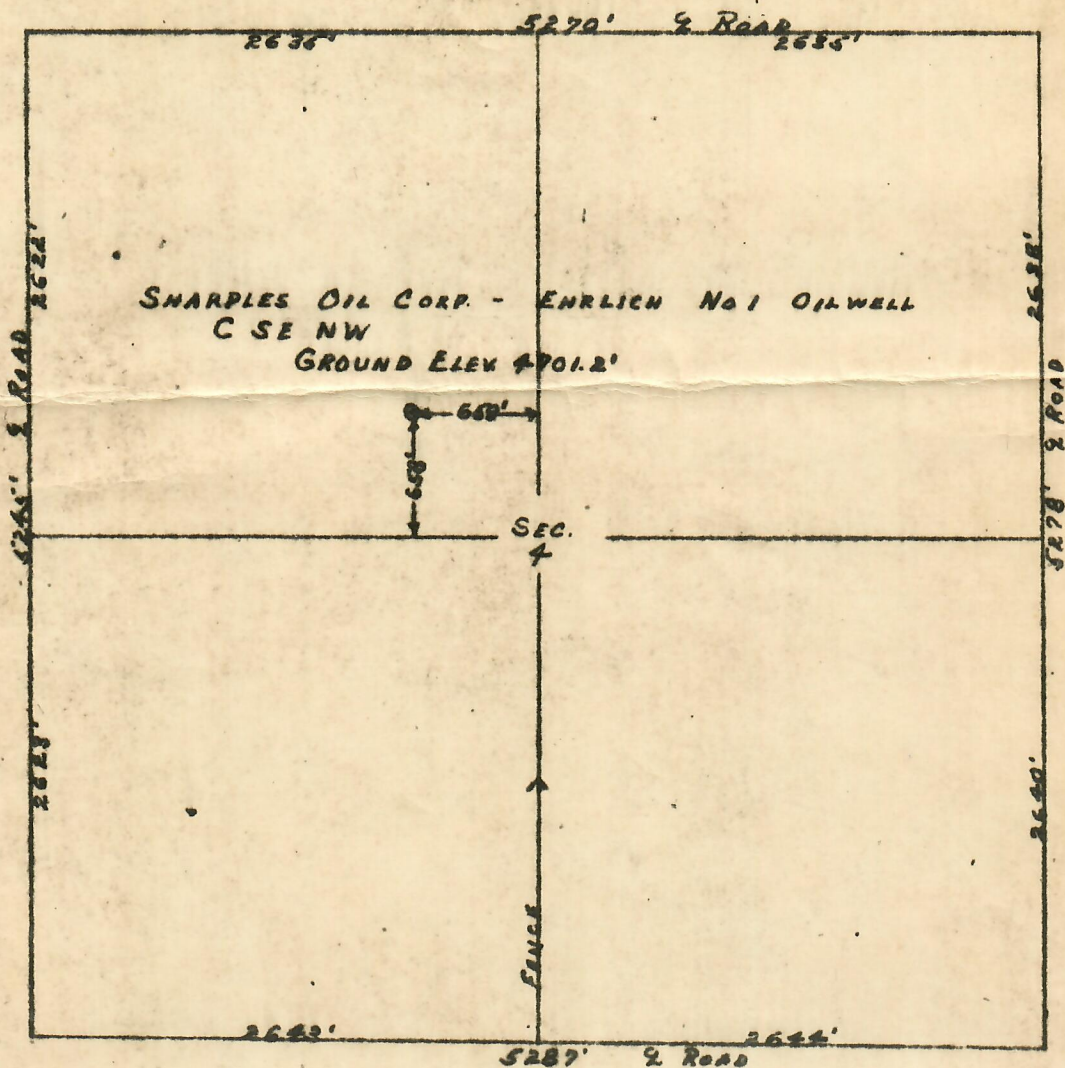
656-3

CERTIFICATE OF SURVEY  
for  
Sharples Oil Corporation



00131960

T4N R64W 6PM



SCALE 1"=1000'

I hereby certify that the above plat is an accurate representation of a correct survey showing the location of Sharples Oil Corp. - Enrllich No. 1 Oilwell located in Section 4 T4N R64W 6 PM. The elevation of the ground at the stake is 4701.2 feet above sea level from U.S.C.S. Bench Mark.

Fort Morgan, Colorado  
July 4, 1954

Registered Professional Engineer  
State of Colorado

