

**BAKER
HUGHES**
INTEQ

RECEIVED

Location: COLORADO
Field: WELD COUNTY (KERR MCGEE)
Facility: SEC.24-T3N-R68W

Slot: Reynolds 2-24
Well: Reynolds 2-24
Wellbore: Reynolds 2-24 PWB

Plot reference wellpath is Reynolds 2-24 PWB

True vertical depths are referenced to Ensign 5 (RT)

Measured depths are referenced to Ensign 5 (RT)

Ensign 5 (RT) to Mean Sea Level: 4929 feet

Mean Sea Level to Mud line (Facility - SE

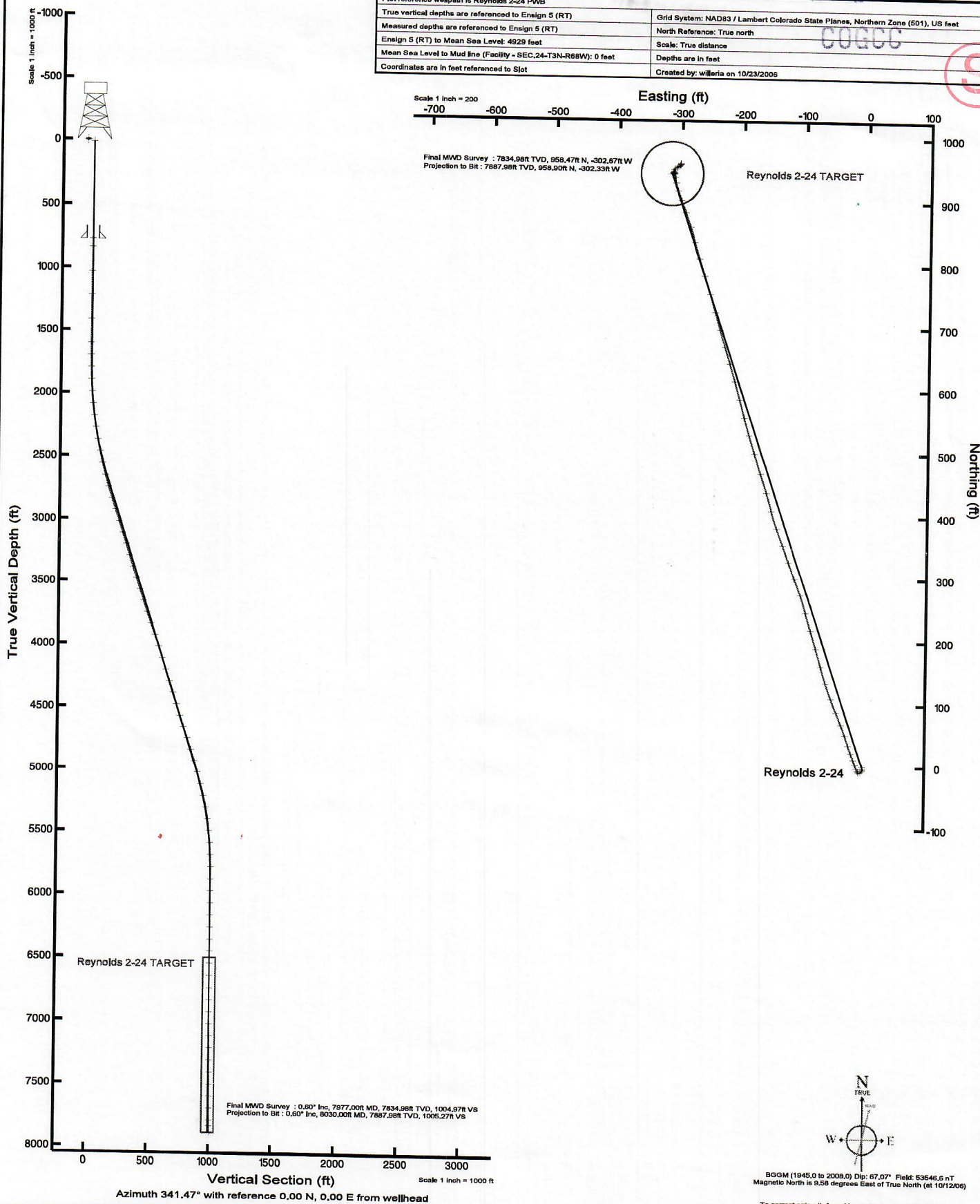
Grid System: NAD83 / Lambert Colorado State Planes, Northern Zone (501), US feet

North Reference: True north

Scale: True distance

Depths are in feet

Created by: willeria on 10/23/2006



BGGM (1945.0 to 2008.0) Dip: 67.07° Field: 53546.6 nT
Magnetic North is 9.58 degrees East of True North (at 10/12/05)

To correct azimuth from Magnetic to True add 9.58 degrees



Actual Wellpath Report

Reynolds 2-24 AWP

Page 1 of 4



INTEQ

REFERENCE WELLPATH IDENTIFICATION

Operator	KERR MCGEE	Slot	Reynolds 2 -24
Area	COLORADO	Well	Reynolds 2 -24
Field	WELD COUNTY (KERR MCGEE)	Wellbore	Reynolds 2 -24 AWP
Facility	SEC.24-T3N-R68W		

REPORT SETUP INFORMATION

Projection System	NAD83 / Lambert Colorado State Planes, Northern Zone (501), US feet	Software System	WellArchitect™ 1.2
North Reference	True	User	Thomsuzc
Scale	0.999957	Report Generated	10/31/06 at 14:25:05
Wellbore last revised	10/23/06	Database/Source file	WA_Denver/Reynolds_2

WELLPATH LOCATION

	Local coordinates		Grid coordinates		Geographic coordinates	
	North [feet]	East [feet]	Easting [US feet]	Northing [US feet]	Latitude [°]	Longitude [°]
Slot Location	0.00	0.00	3154226.88	1321515.82	40 12 52.704N	104 56 51.900W
Facility Reference Pt			3154226.88	1321515.82	40 12 52.704N	104 56 51.900W
Field Reference Pt			3197771.84	1268891.29	40 04 09.600N	104 47 36.000W

WELLPATH DATUM

Calculation method	Minimum curvature	Ensign 5 (RT) to Facility Vertical Datum	4929.00 feet
Horizontal Reference Pt	Slot	Ensign 5 (RT) to Mean Sea Level	4929.00 feet
Vertical Reference Pt	Ensign 5 (RT)	Facility Vertical Datum to Mud Line (Facility)	0.00 feet
MD Reference Pt	Ensign 5 (RT)	Section Origin	N 0.00, E 0.00 ft
Field Vertical Reference	Mean Sea Level	Section Azimuth	342.50°



KerrMcGee

Actual Wellpath Report

Reynolds 2-24 AWP

Page 2 of 4



INTEQ

REFERENCE WELLPATH IDENTIFICATION

Operator	KERR MCGEE	Slot	Reynolds 2-24
Area	COLORADO	Well	Reynolds 2-24
Field	WELD COUNTY (KERR MCGEE)	Wellbore	Reynolds 2-24 AWB
Facility	SEC.24-T3N-R68W		

WELLPATH DATA (75 stations) † = interpolated/extrapolated station

MD [feet]	Inclination [°]	Azimuth [°]	TVD [feet]	Vert Sect [feet]	North [feet]	East [feet]	DLS [°/100ft]	Log Comment
0.00 †	0.000	0.000	0.00	0.00	0.00	0.00	0.00	
14.00	0.000	0.000	14.00	0.00	0.00	0.00	0.00	
836.00	0.400	171.300	835.99	-2.84	-2.84	0.43	0.05	
1030.00	0.500	195.900	1029.99	-4.21	-4.32	0.30	0.11	
1217.00	0.700	206.500	1216.98	-5.71	-6.13	-0.43	0.12	
1413.00	1.100	239.900	1412.95	-6.99	-8.14	-2.59	0.33	
1604.00	0.800	271.200	1603.93	-6.96	-9.03	-5.51	0.31	
1700.00	1.000	342.500	1699.92	-5.91	-8.22	-6.43	1.11	
1797.00	1.400	328.800	1796.90	-3.91	-6.40	-7.30	0.50	
1893.00	3.300	338.000	1892.81	-0.01	-2.83	-8.94	2.01	
1989.00	4.600	339.000	1988.58	6.58	3.32	-11.36	1.36	
2085.00	5.900	342.200	2084.18	15.36	11.61	-14.25	1.39	
2182.00	7.100	336.500	2180.55	26.31	21.86	-18.16	1.40	
2277.00	9.000	342.500	2274.62	39.58	34.33	-22.74	2.18	
2374.00	10.600	340.100	2370.20	56.08	49.96	-28.05	1.70	
2470.00	12.200	339.000	2464.30	75.03	67.73	-34.70	1.68	
2565.00	13.600	336.500	2556.90	96.16	87.35	-42.75	1.59	
2661.00	15.000	339.700	2649.93	119.79	109.35	-51.56	1.67	
2758.00	15.700	340.800	2743.47	145.45	133.52	-60.23	0.78	
2854.00	17.600	344.600	2835.44	172.94	159.78	-68.36	2.28	
2949.00	18.500	343.200	2925.76	202.36	188.06	-76.53	1.05	
3046.00	17.500	342.500	3018.01	232.34	216.70	-85.36	1.05	
3142.00	17.900	345.300	3109.47	261.51	244.73	-93.45	0.98	
3238.00	17.600	340.800	3200.91	290.75	272.71	-101.96	1.46	
3334.00	17.000	338.700	3292.56	319.26	299.49	-111.83	0.90	
3430.00	16.800	340.100	3384.42	347.13	325.62	-121.65	0.47	
3525.00	18.000	340.000	3475.07	375.51	352.32	-131.35	1.26	
3621.00	18.300	339.400	3566.29	405.38	380.36	-141.72	0.37	
3717.00	17.500	345.300	3657.65	434.85	408.44	-150.69	2.06	
3812.00	19.200	343.600	3747.82	464.73	437.24	-158.73	1.88	
3908.00	19.700	341.800	3838.34	496.70	467.76	-168.24	0.81	
4004.00	19.800	342.200	3928.69	529.13	498.61	-178.26	0.18	
4100.00	17.900	342.900	4019.54	560.15	528.19	-187.57	1.99	
4196.00	17.200	345.700	4111.07	589.07	556.05	-195.41	1.14	
4293.00	18.300	344.600	4203.46	618.61	584.63	-203.00	1.19	
4389.00	17.800	343.900	4294.73	648.34	613.26	-211.07	0.57	
4484.00	17.900	343.200	4385.16	677.46	641.18	-219.32	0.25	
4579.00	16.300	342.200	4475.95	705.39	667.86	-227.61	1.71	
4676.00	17.900	344.300	4568.66	733.90	695.17	-235.81	1.77	
4771.00	18.100	343.900	4659.02	763.25	723.40	-243.85	0.25	



Actual Wellpath Report

Reynolds 2-24 AWP

Page 3 of 4



INTEQ

REFERENCE WELLPATH IDENTIFICATION

Operator	KERR MCGEE	Slot	Reynolds 2-24
Area	COLORADO	Well	Reynolds 2-24
Field	WELD COUNTY (KERR MCGEE)	Wellbore	Reynolds 2-24 AWP
Facility	SEC.24-T3N-R68W		

WELLPATH DATA (75 stations) † = interpolated/extrapolated station

MD [feet]	Inclination [°]	Azimuth [°]	TVD [feet]	Vert Sect [feet]	North [feet]	East [feet]	DLS [°/100ft]	Log Comment
4867.00	19.100	343.600	4750.00	793.86	752.80	-252.42	1.05	
4963.00	17.800	341.800	4841.06	824.24	781.81	-261.44	1.48	
5059.00	16.800	342.900	4932.72	852.79	809.01	-270.10	1.10	
5155.00	15.800	343.600	5024.86	879.73	834.81	-277.87	1.06	
5251.00	15.300	341.800	5117.35	905.46	859.38	-285.52	0.72	
5348.00	13.300	339.700	5211.34	929.40	882.00	-293.39	2.13	
5444.00	10.800	339.000	5305.21	949.41	900.76	-300.44	2.61	
5538.00	9.100	340.800	5397.80	965.63	916.00	-306.05	1.84	
5634.00	6.900	347.400	5492.86	978.97	928.80	-309.80	2.48	
5729.00	4.200	356.900	5587.41	988.03	937.84	-311.23	2.99	
5825.00	2.400	343.600	5683.25	993.44	943.28	-311.99	2.03	
5920.00	0.600	251.100	5778.22	995.42	945.03	-313.02	2.63	
6016.00	0.100	164.300	5874.21	995.32	944.79	-313.48	0.63	
6112.00	0.200	257.800	5970.21	995.25	944.67	-313.62	0.24	
6208.00	0.200	298.900	6066.21	995.39	944.72	-313.93	0.15	
6304.00	0.200	280.600	6162.21	995.59	944.83	-314.24	0.07	
6401.00	0.300	155.100	6259.21	995.42	944.63	-314.30	0.46	
6497.00	0.100	295.100	6355.21	995.23	944.44	-314.27	0.40	
6592.00	0.200	35.900	6450.21	995.38	944.61	-314.25	0.25	
6688.00	0.400	213.900	6546.21	995.27	944.46	-314.34	0.62	
6784.00	0.100	294.400	6642.21	995.12	944.22	-314.60	0.41	
6880.00	0.300	293.700	6738.21	995.34	944.36	-314.91	0.21	
6976.00	0.400	48.300	6834.21	995.64	944.68	-314.89	0.62	
7072.00	0.500	31.400	6930.21	996.06	945.26	-314.42	0.17	
7168.00	1.100	16.900	7026.20	997.09	946.50	-313.93	0.65	
7265.00	1.800	25.100	7123.16	998.98	948.77	-313.01	0.75	
7360.00	2.000	45.500	7218.11	1000.83	951.28	-311.20	0.74	
7456.00	1.700	57.100	7314.06	1001.97	953.23	-308.81	0.50	
7552.00	1.400	58.500	7410.03	1002.63	954.62	-306.61	0.31	
7647.00	0.900	71.500	7505.01	1002.93	955.46	-304.92	0.59	
7743.00	0.700	51.800	7601.00	1003.15	956.06	-303.74	0.35	
7839.00	0.800	9.900	7696.99	1003.95	957.08	-303.16	0.57	
7935.00	0.500	24.000	7792.99	1004.86	958.13	-302.88	0.35	
7977.00	0.600	38.100	7834.98	1005.12	958.47	-302.67	0.40	
8030.00 †	0.600	38.100	7887.98	1005.43	958.90	-302.33	0.00	

HOLE & CASING SECTIONS Ref Wellbore: Reynolds 2-24 AWP Ref Wellpath: Reynolds 2-24 AWP

String/Diameter	Start MD [feet]	End MD [feet]	Interval [feet]	Start TVD [feet]	End TVD [feet]	Start N/S [feet]	Start E/W [feet]	End N/S [feet]	End E/W [feet]
12.25in Open Hole	14.00	771.00	757.00	14.00	770.99	0.00	0.00	-2.41	0.37
8.625in Casing	14.00	771.00	757.00	14.00	770.99	0.00	0.00	-2.41	0.37
7.872in Open Hole	771.00	8030.00	7259.00	770.99	7887.98	-2.41	0.37	958.90	-302.33



Actual Wellpath Report

Reynolds 2-24 AWP

Page 4 of 4



INTEQ

REFERENCE WELLPATH IDENTIFICATION

Operator	KERR MCGEE	Slot	Reynolds 2 -24
Area	COLORADO	Well	Reynolds 2 -24
Field	WELD COUNTY (KERR MCGEE)	Wellbore	Reynolds 2 -24 AWB
Facility	SEC.24-T3N-R68W		

TARGETS

Name	MD [feet]	TVD [feet]	North [feet]	East [feet]	Grid East [us survey feet]	Grid North [us survey feet]	Latitude [°]	Longitude [°]	Shape
Reynolds Cattle CO GU #1		0.00	-47.00	17.00	3154244.17	1321468.93	40 12 52.240N	104 56 51.681W	circle
Reynolds 2-24 TARGET		6500.00	943.00	-316.00	3153905.03	1322456.79	40 13 02.023N	104 56 55.973W	circle

WELLPATH COMPOSITION Ref Wellbore: Reynolds 2-24 AWB

Ref Wellpath: Reynolds 2-24 AWP

Start MD [feet]	End MD [feet]	Positional Uncertainty Model	Log Name/Comment	Wellbore
14.00	7977.00	MTC (Collar, pre-2000) (Standard)	BHIMWD<836-7977>	Reynolds 2-24 AWB
7977.00	8030.00	Blind Drilling (std)	Projection to bit	Reynolds 2-24 AWB

WELLPATH COMMENTS

MD [feet]	Inclination [degrees]	Azimuth [degrees]	TVD [feet]	Comment
7977.00	0.600	38.100	7834.98	Final MWD Survey
8030.00	0.600	38.100	7887.98	Projection to Bit