



1 Mile Offset
No PR Sussex
Deepest WW: 680'

WELLBORE DIAGRAM

CURRENT WBD

650' FNL & 660' FWL

Cut and cap (well name, api,
legal desc.) surf csg 4-6'
below ground level.

KB ' 5174'

GL '

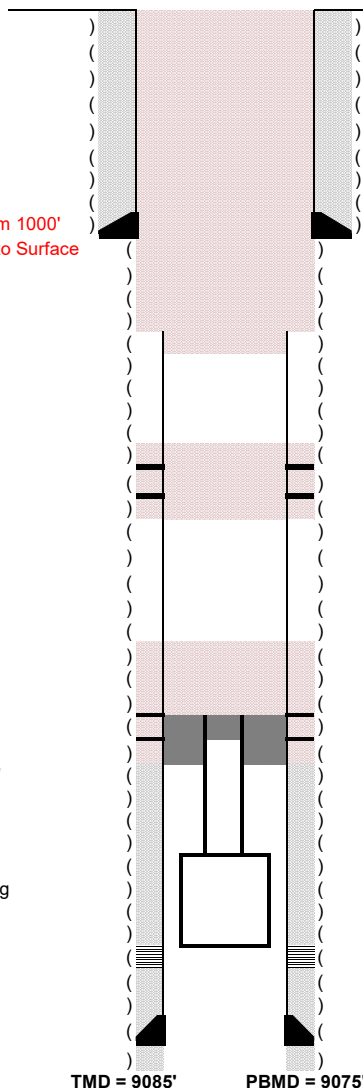
Cut and pull 5-1/2" csg from 1000'
445sx class G from 1050' to Surface

Perf @ 2500'
170sx balanced plug
From 2500' to 2100'

250sx Class G
From 6700' to 6100'

Hole in Csg @ 6708'
Top of stuck Tbg @ 6810'
Fill on fish tagged @ 6718'

ESP and 2269' of 2-7/8" tbg



Spud Date: 8/16/1956
Date TD Reached
Completion Date: 9/24/1956

Surface Casing
(" Hole Size) 9-5/8" 36# csg set @ 317'
w/ 225 sx cmt.

Production casing
(" Hole Size) 5-1/2" 17# csg set @ 9085'
w/ 450 sx cmt.

Tubing
2-7/8" tbg set @ 6630'

TOC = 6915' (Calc)

Formation Tops (MD)

Hygiene	3512'
Niobrara	6874'
Dakota	7900'

Perfortations

Lyons
9012'-9047'

Operator:	Great Western Operating Co. LLC
Well Name:	UPRR #13
Lease Number:	
Location:	NWNW S31-T8N-R66W
Field:	Black Hollow - #6835
County, State:	Weld, CO
API Number:	05-123-05482
Diagram Date:	6/27/2019
Lat/Long	40.62346, -104.8291