



**Cement Bond
Gamma Ray
Collar Correlation Log**

Company Noble Energy
Well CAMOLO RED D27-6
Field Wattenberg
County Weld State Colorado

Location: API # : 05-123-17008 Other Services

SEC 27 TWP 3N RGE 64W
Permanent Datum Ground Level Elevation 4854
Log Measured From Kelly Bushing
Drilling Measured From Kelly Bushing

Elevation
K.B. 4867
D.F. 4866
G.L. 4854

Date 22 March 2019

Run Number	One	
Depth Driller	7195	
Depth Logger	2732	
Bottom Logged Interval	2731	
Top Log Interval	Surface	
Casing Size	3 1/2	
Type Fluid	Water	
Max. Recorded Temp.	Not Recorded	
Estimated Cement Top	---	
Time Well Ready	14:30	
Time Logger on Bottom	14:50	
Unit Number	200032	
Tool Size/ID Number	1 1/16 RBT	
Location	Fort Lupton	
Recorded By	Scott Erb	
Witnessed By	Eric Peterson	

Borehole Record			Tubing Record				
Run Number	Bit	From	To	Size	Weight	From	To

Casing Record	Size	Wgt/Ft	Top	Bottom
Surface String	8 5/8	24	Surface	653
Prot. String				
Production String	3 1/2	7.7	Surface	Total Depth
Liner				

<<< Fold Here >>>

All interpretations are opinions based on inferences from electrical or other measurements and we cannot and do not guarantee the accuracy or correctness of any interpretation, and we shall not, except in the case of gross or willful negligence on our part, be liable or responsible for any loss, costs, damages, or expenses incurred or sustained by anyone resulting from any interpretation made by any of our officers, agents or employees. These interpretations are also subject to our general terms and conditions set out in our current Price Schedule.

Comments

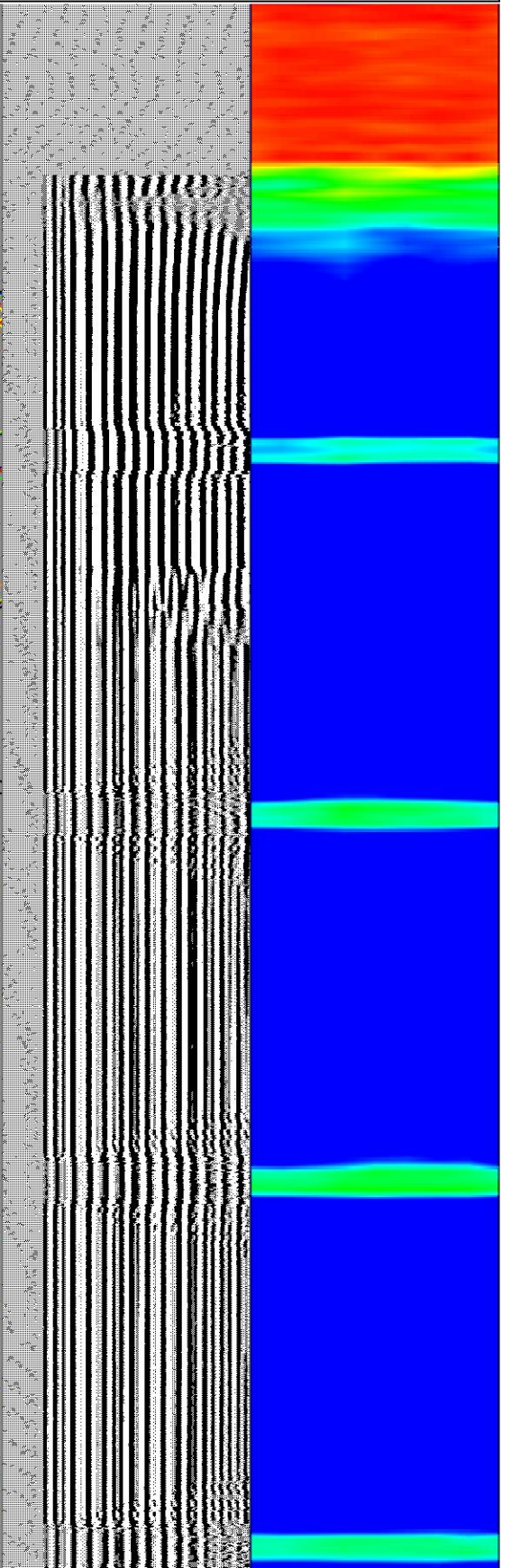
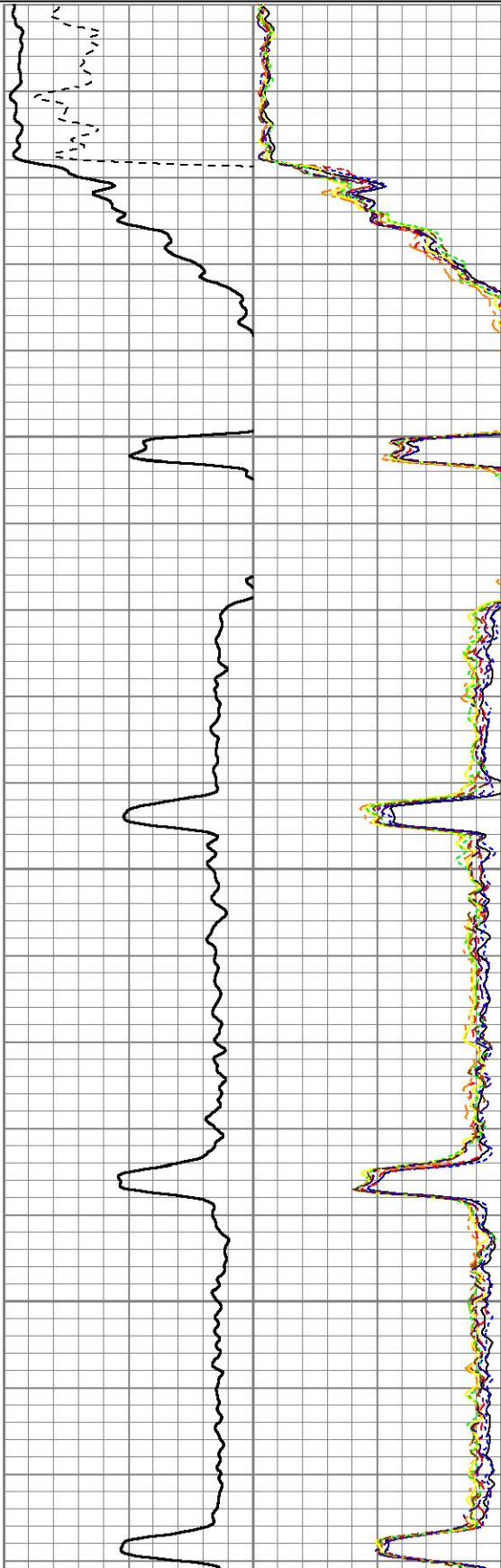
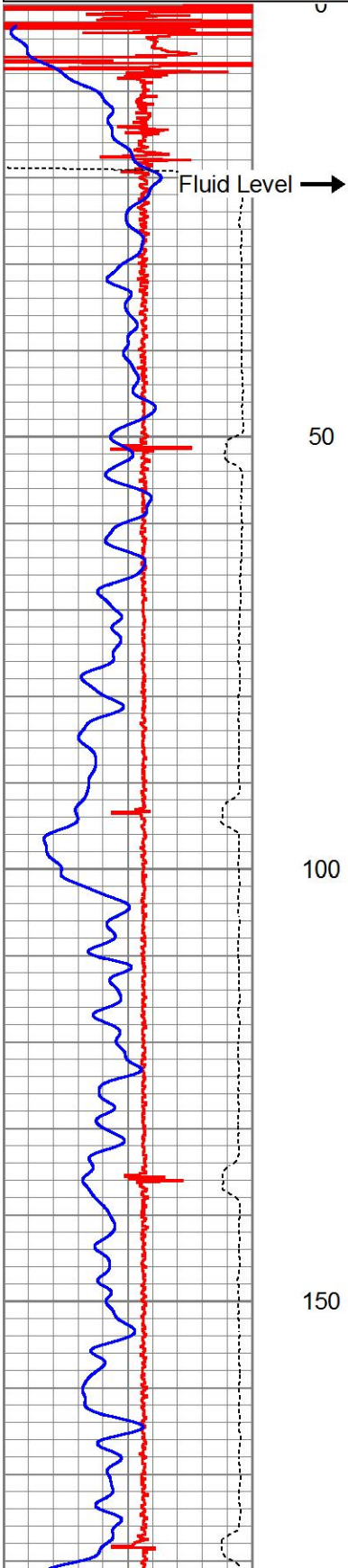
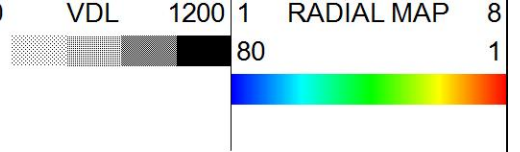
No log available for correlation

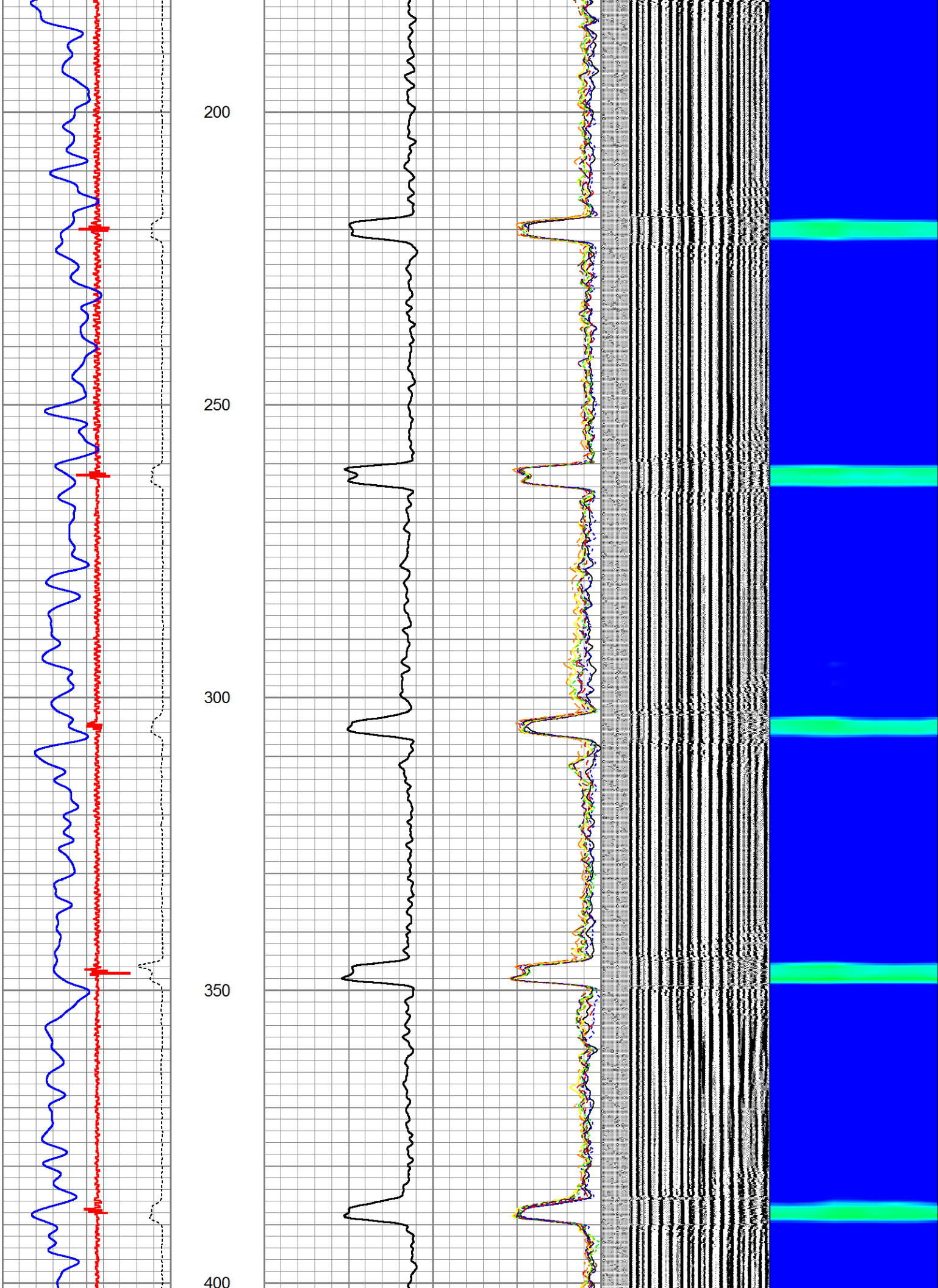
Database File camolo red d27-6.db
Dataset Pathname pass49
Presentation Format zwag (2)
Dataset Creation Fri Mar 22 15:16:07 2019
Charted by Depth in Feet scaled 1:240

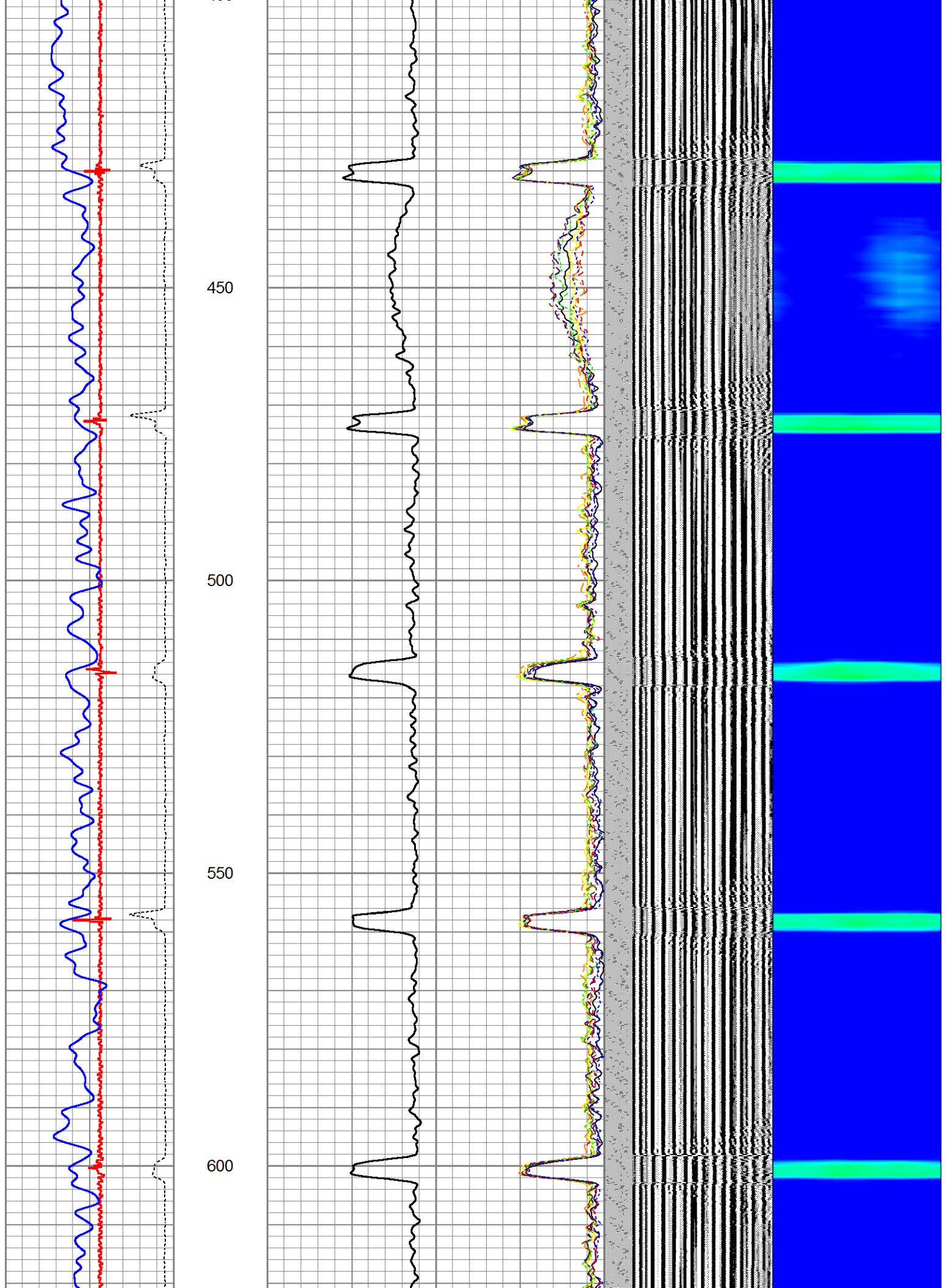
-1	CCL	3
0	GR (GAPI)	150
340	TT3 (usec)	240

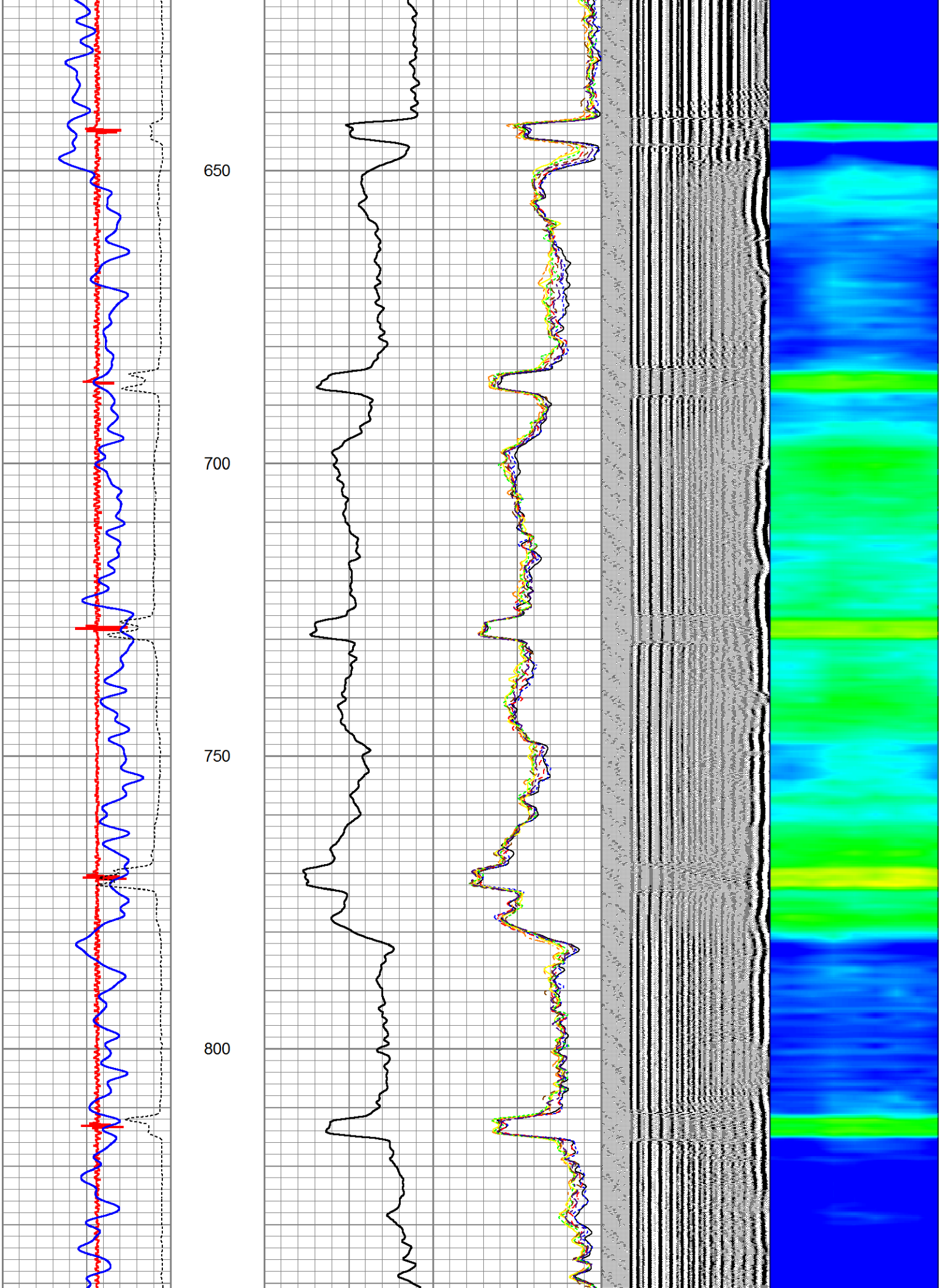
0	AMP (mV)	100
0	AMPLIFIED AMP3	20

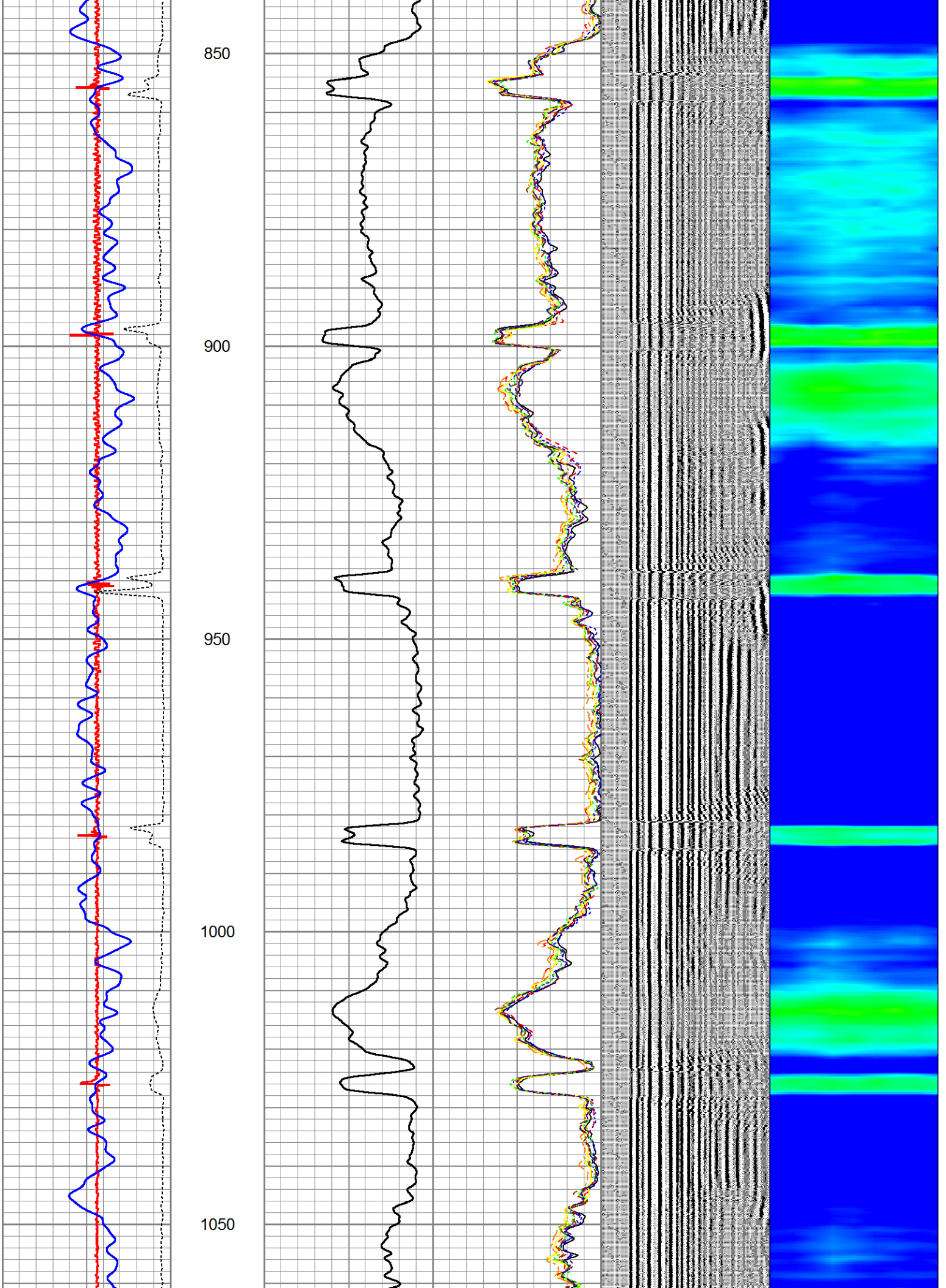
0	AMPS1	100
0	AMPS2	100
0	AMPS3	100
0	AMPS4	100
0	AMPS5	100
0	AMPS6	100
0	AMPS7	100
0	AMPS8	100

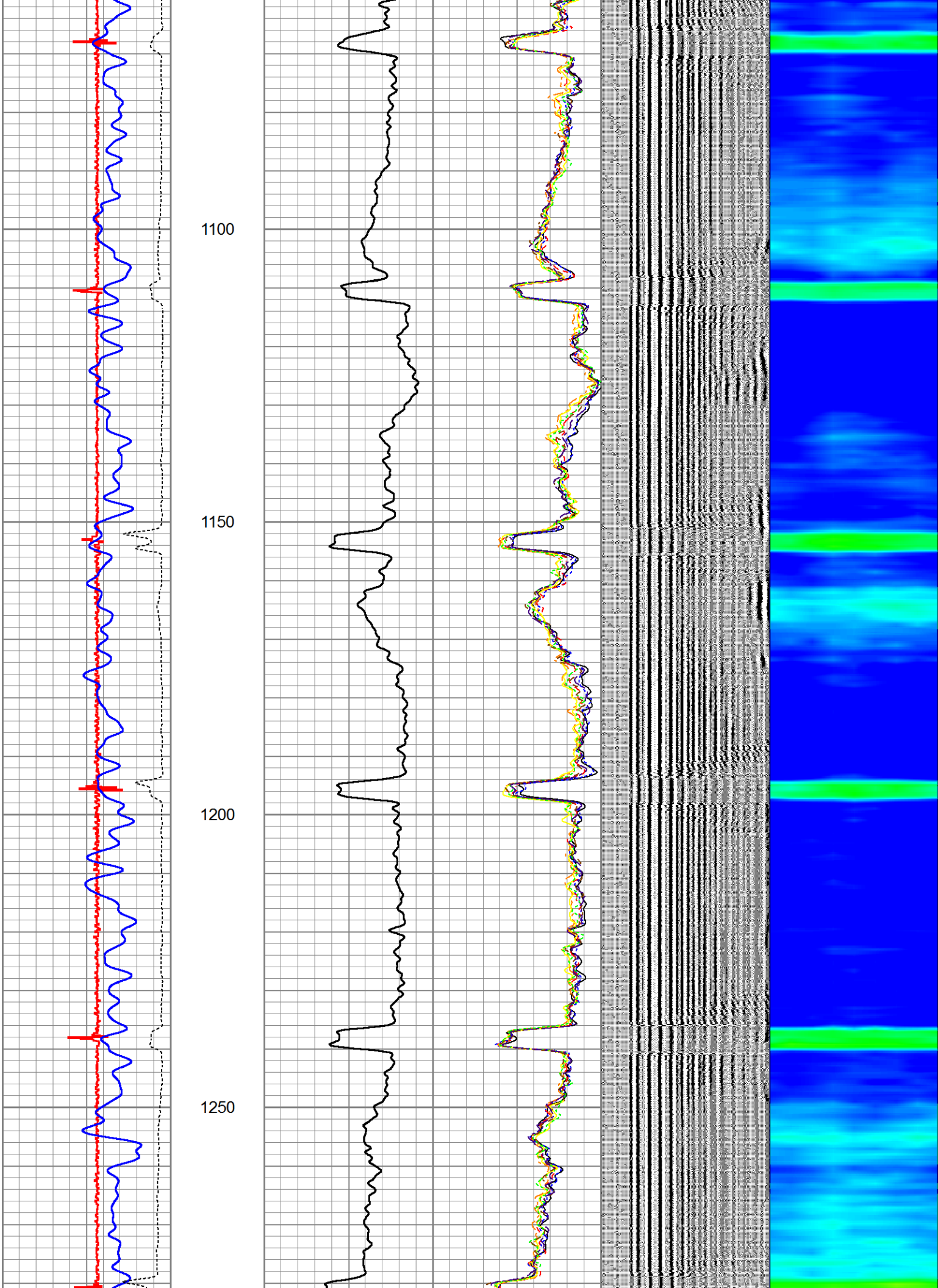


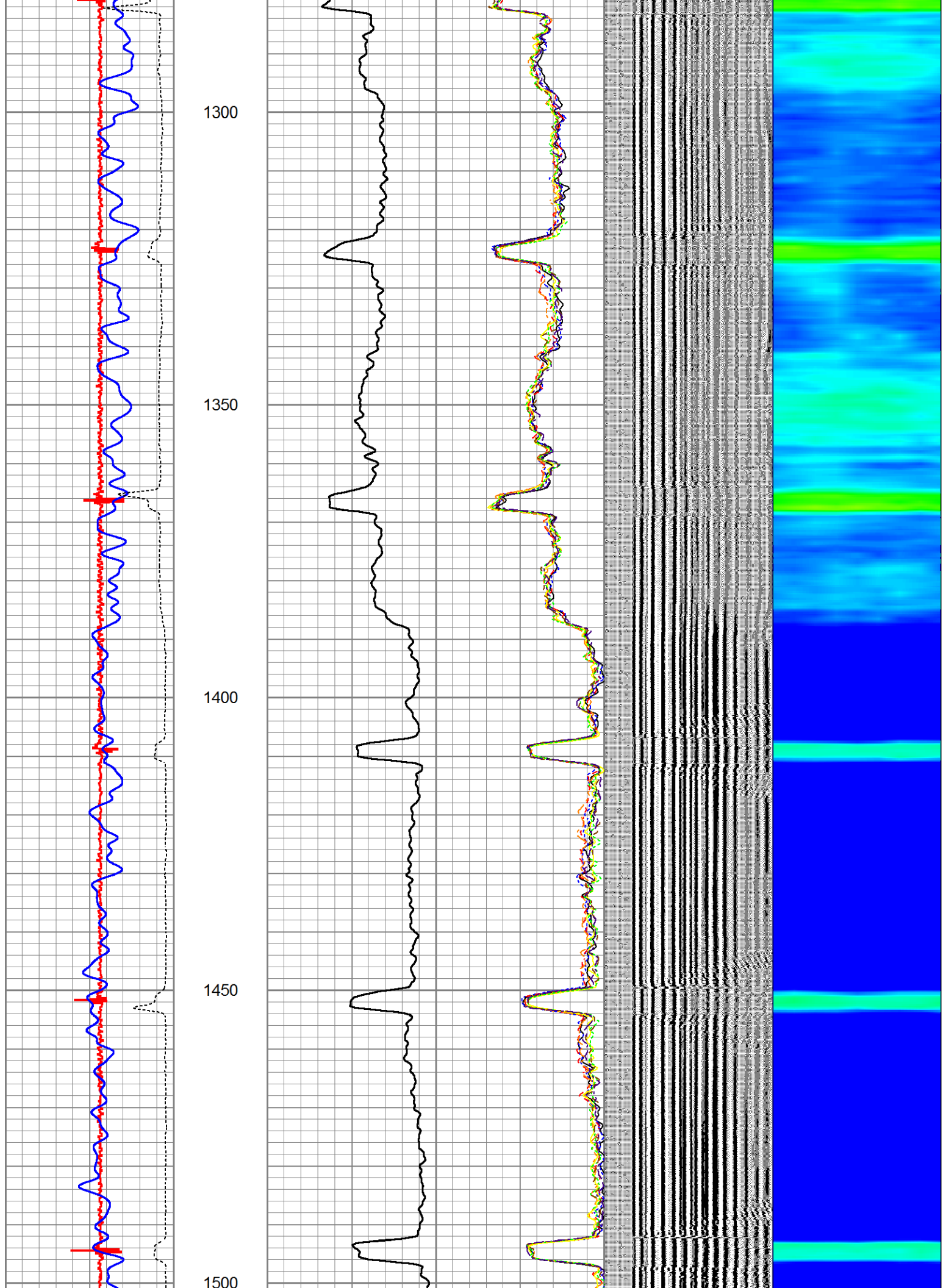


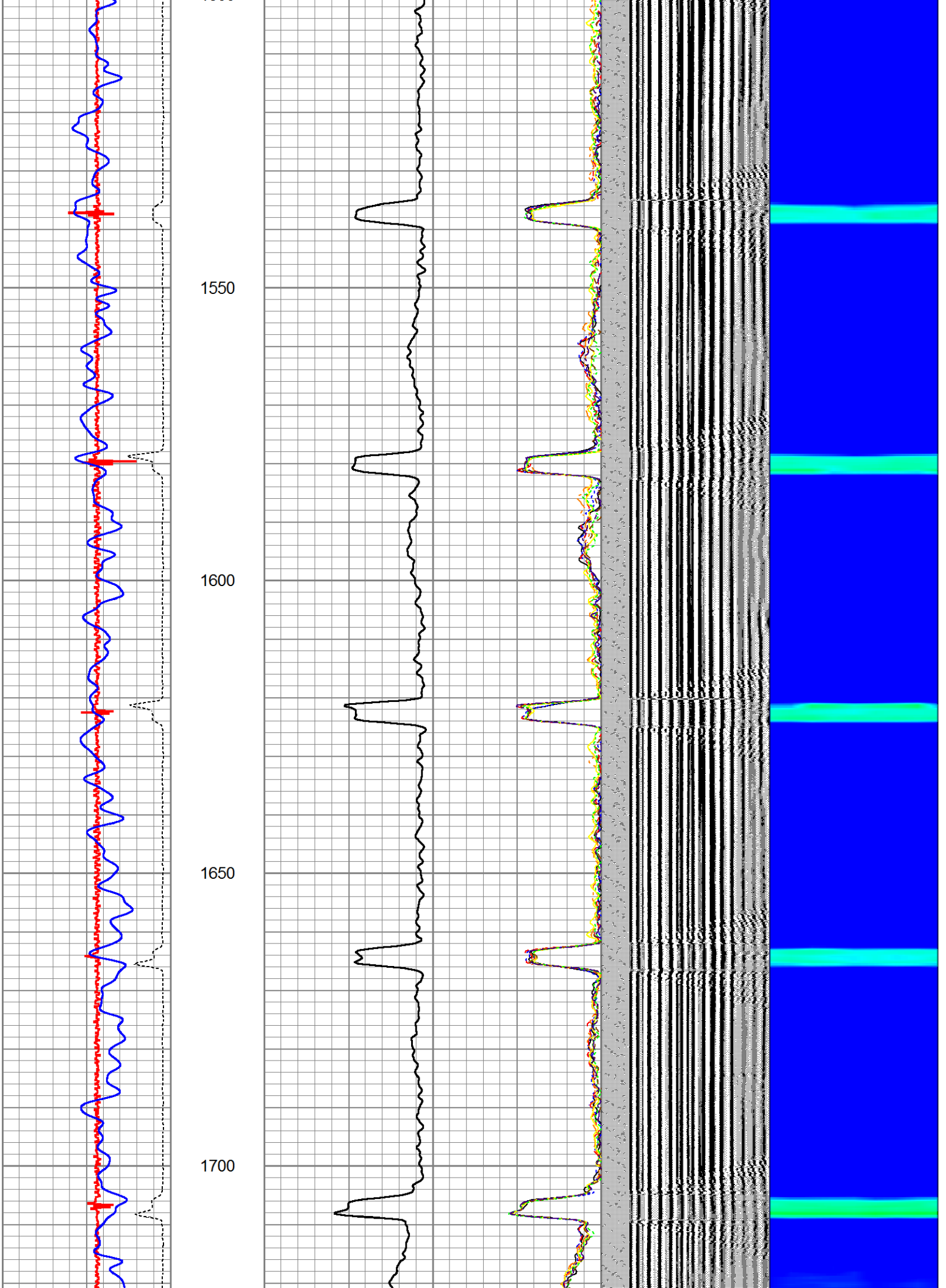


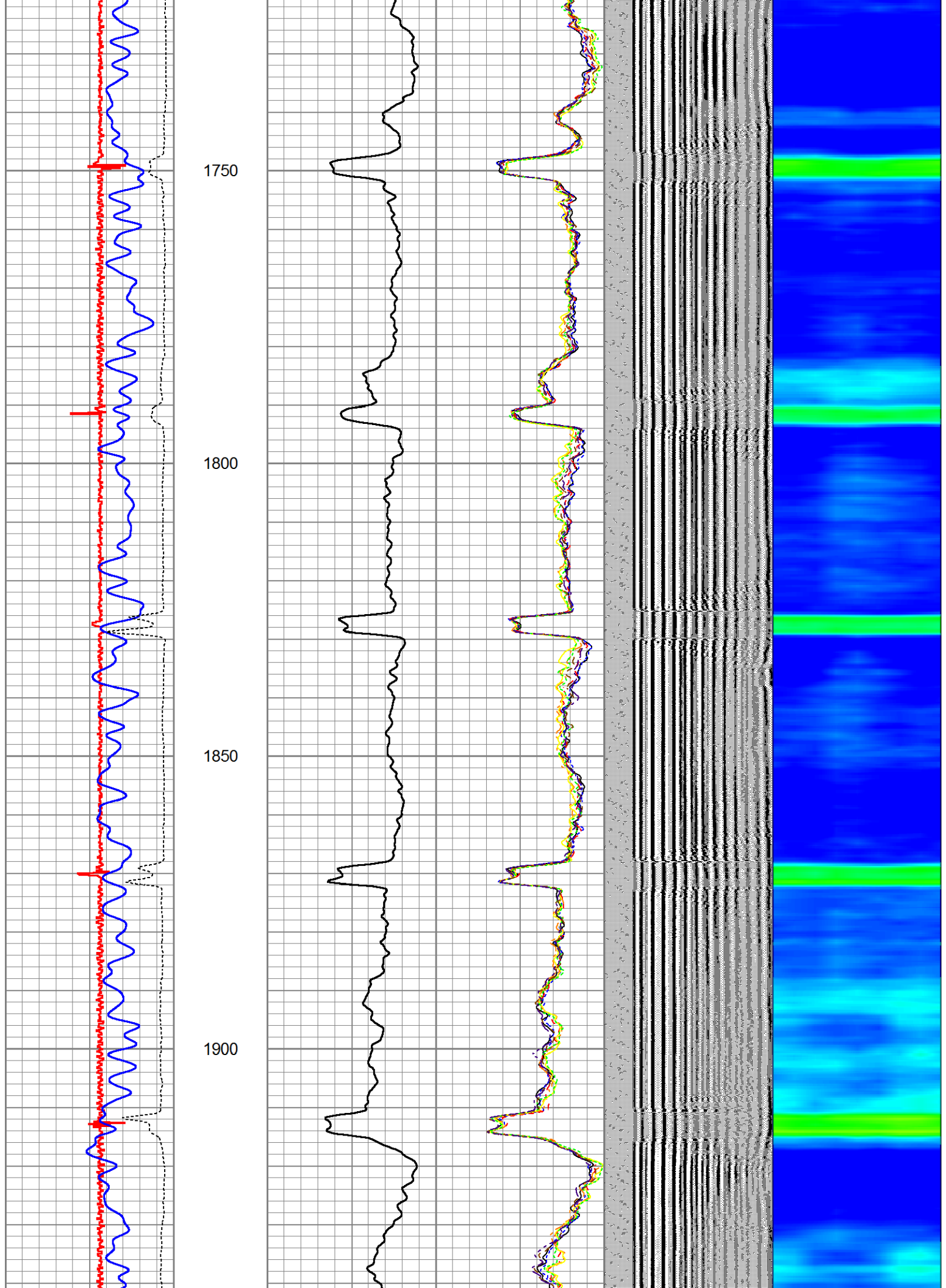


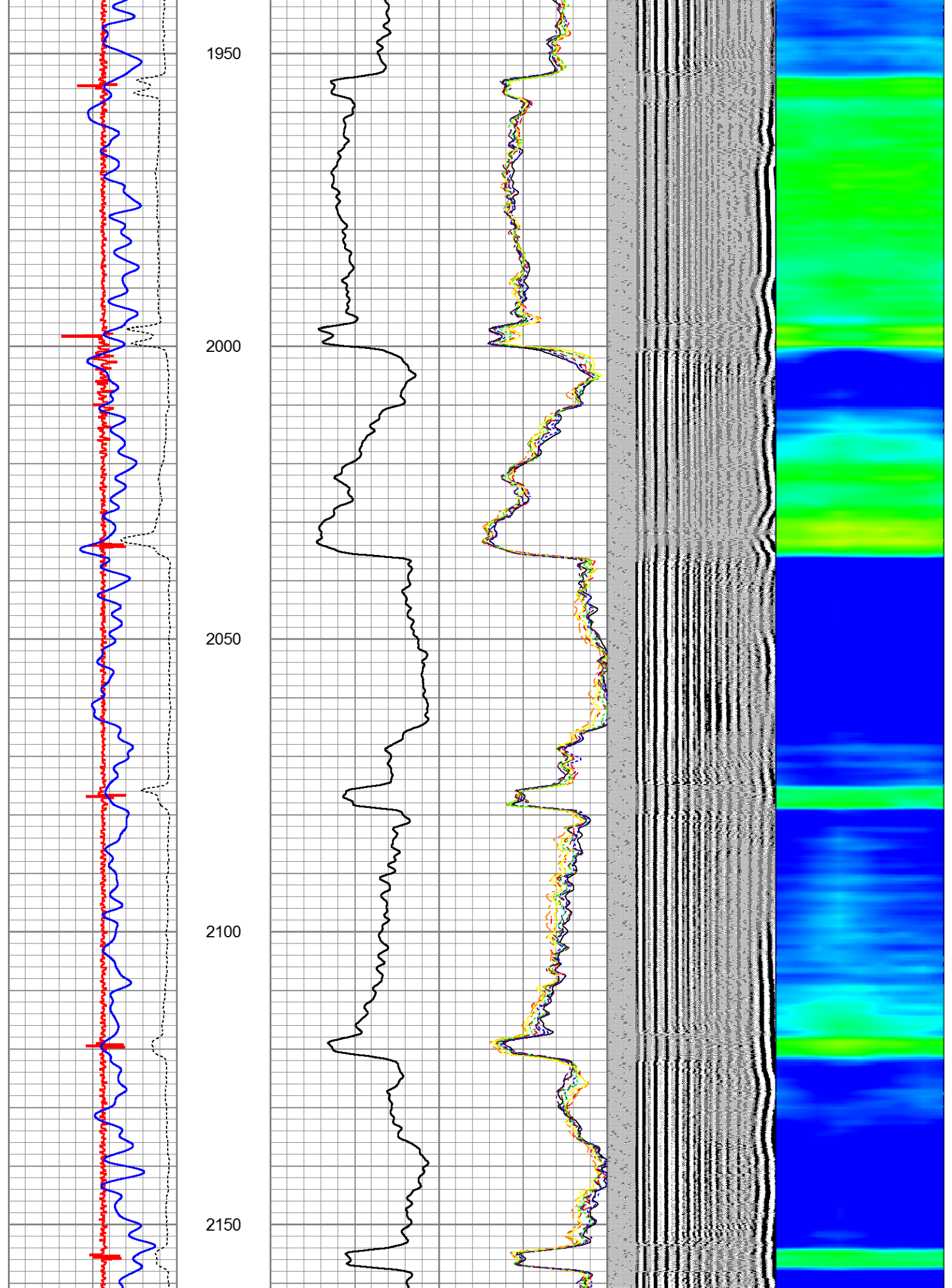


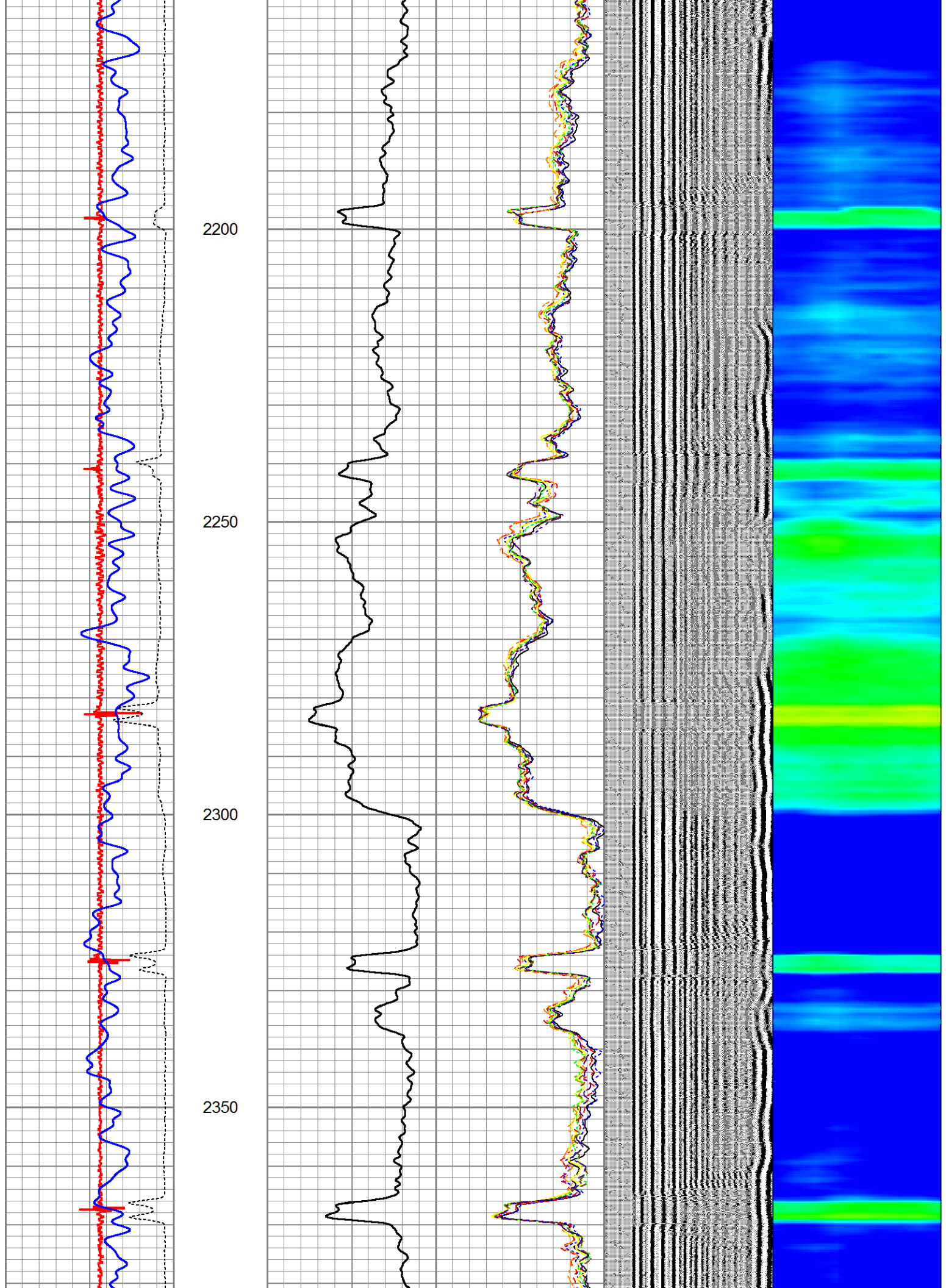


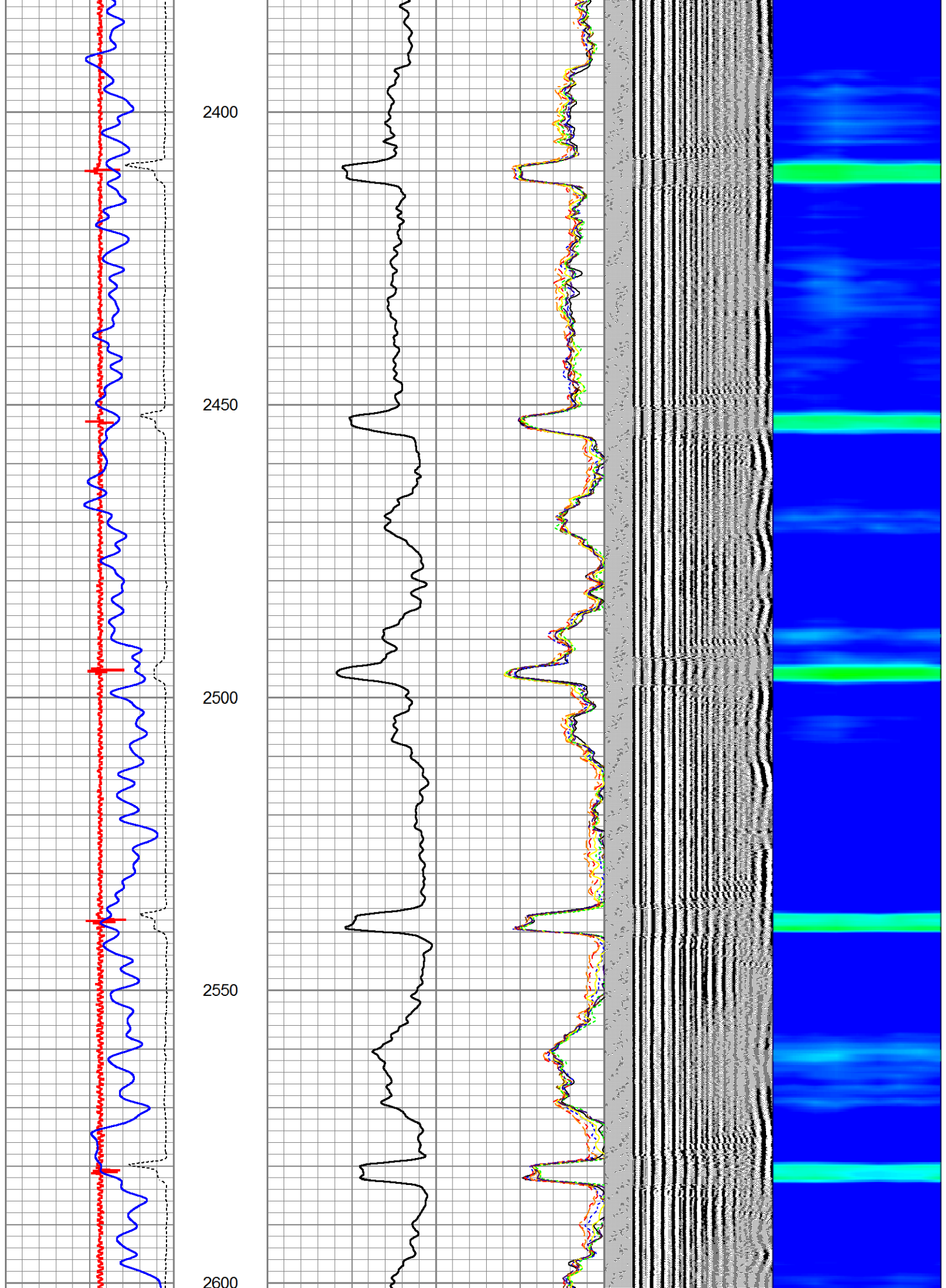


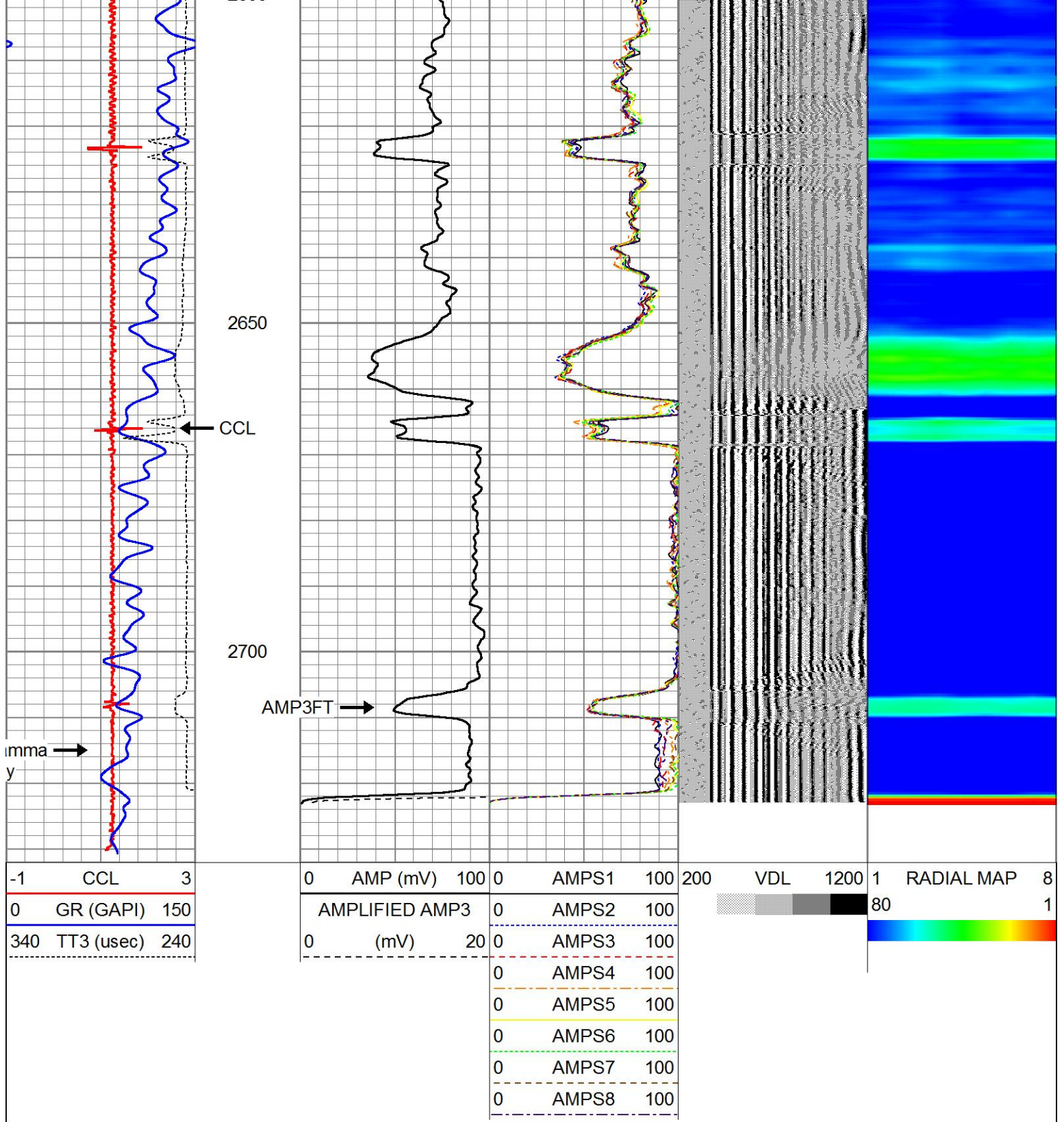












Calibration Report

Database File camolo red d27-6.db
Dataset Pathname pass49
Dataset Creation Fri Mar 22 15:16:07 2019

Gamma Ray Calibration Report

Serial Number: FW1806-005
Tool Model: GCT275
Performed: (Not Performed)

Calibrator Value: 1.0 GAPI

Background Reading:	0.0	cps
Calibrator Reading:	1.0	cps
Sensitivity:	1.0000	GAPI/cps

Segmented Cement Bond Log Calibration Report

Serial Number:	FW1804-090
Tool Model:	Probe 170

Calibration Casing Diameter:	3.500	in
Calibration Depth:	2711.093	ft

Master Calibration, performed Fri Mar 22 15:15:41 2019:

	Raw (v)		Calibrated (mv)		Results	
	Zero	Cal	Zero	Cal	Gain	Offset
3'	0.000	1.515	1.000	94.517	61.718	1.000
CAL	0.000	2.160				
5'	0.000	1.325	1.000	94.517	70.594	1.000
SUM						
S1	0.000	1.526	0.000	100.000	65.526	0.000
S2	0.000	1.603	0.000	100.000	62.399	0.000
S3	0.000	1.635	0.000	100.000	61.156	0.000
S4	0.000	1.569	0.000	100.000	63.734	0.000
S5	0.000	1.400	0.000	100.000	71.434	0.000
S6	0.000	1.318	0.000	100.000	75.846	0.000
S7	0.000	1.433	0.000	100.000	69.789	0.000
S8	0.000	1.491	0.000	100.000	67.077	0.000

Internal Reference Calibration, performed (Not Performed):

	Raw (v)		Calibrated (v)		Results	
	Zero	Cal	Zero	Cal	Gain	Offset
CAL	0.000	0.000	0.000	2.160	1.000	0.000

Air Zero Calibration, performed (Not Performed):

	Raw (v)	Calibrated (v)	Results
	Zero	Zero	Offset
3'	0.000	0.000	0.000
5'	0.000	0.000	0.000
SUM			
S1	0.000	0.000	0.000
S2	0.000	0.000	0.000
S3	0.000	0.000	0.000
S4	0.000	0.000	0.000
S5	0.000	0.000	0.000
S6	0.000	0.000	0.000
S7	0.000	0.000	0.000
S8	0.000	0.000	0.000