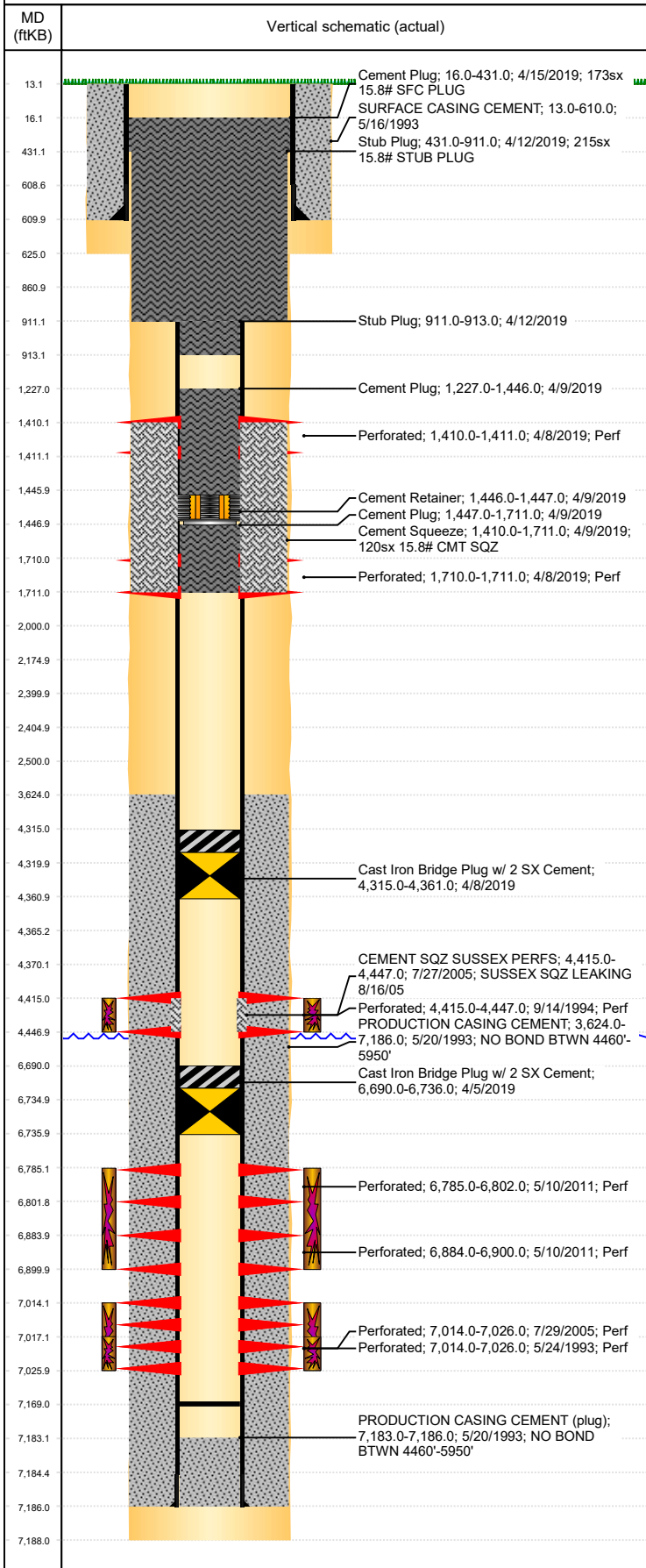


Well Name: CAMOLO RED D27-04

VERTICAL, ORIGINAL HOLE, 7/2/2019 3:45:12 PM



Well Header									
API 05-123-17006		Business Unit DJ BASIN			District 15		Well Config VERTICAL		
KB - GL / MSL (ft... 13.00		Spud Date 5/16/1993		P & A Date 5/13/2019		Well Production Status PA			SoRT Yes
Comment FOUND TIGHT SPOT AT 4516' WITH PACKER. DISCREPANCY: PROD CSG SET DEPTH- ST & OLDER DRILL RPTS 7183', NEWER DRILL RPTS 7186'.									
Surface Location (Congressional)									
Qtr 3 NW	Qtr 4 NW	Section 27	Twnshp 3	Twnsh... N	Range 64	Rng E/... W	Actual Latitude (°) 40.20199332	Actual Longitude (°) -104.54483484	
Wellbore Sections									
Section Des			Size (in)			Act Top, MD (ftKB)		Act Btm, MD (ftKB)	
SURFACE			12 1/4			13		625	
PRODUCTION			7 7/8			625		7,188	
Casing Strings									
Csg Des		Run Date		OD (in)	Wt/Len (lb/ft)	Grade	Top, MD (ftKB)	MD (ftKB)	
Surface		5/16/1993		8 5/8	23.00	J-55	13.0	610.0	
Production		5/20/1993		3 1/2	7.70	M-75	13.0	7,186.0	
Cement									
Des				Start Date		Top (ftKB)		Btm (ftKB)	
SURFACE CASING CEMENT						13.0		610.0	
PRODUCTION CASING CEMENT						3,624.0		7,186.0	
CEMENT SQZ SUSSEX PERFS				7/27/2005		4,415.0		4,447.0	
Cement Plug				4/9/2019		1,447.0		1,711.0	
Cement Squeeze				4/9/2019		1,410.0		1,711.0	
Cement Plug				4/9/2019		1,227.0		1,446.0	
Stub Plug				4/12/2019		911.0		913.0	
Stub Plug				4/12/2019		431.0		911.0	
Cement Plug				4/15/2019		16.0		431.0	
Zone Statuses									
Zone Name		Status Date	Status	Fluid Type	Job			Prod Method	
SUSSEX		7/27/2005	P&A		RE-FRAC, 7/25/2005 00:00				
SUSSEX		4/8/2019	P&A		ABANDON WELL, 4/4/2019 14:00				
CODELL		10/8/2015	PR						
CODELL		4/5/2019	P&A		ABANDON WELL, 4/4/2019 14:00				
NIOBRARA		5/28/2011	PR		RECOMPLETION, 5/6/2011 06:00				
NIOBRARA		4/5/2019	P&A	ABANDON WELL, 4/4/2019 14:00					
Perforation Data									
Linked Zone		Brnch/Stg	Entered Shot Total	Top (ftKB)		Btm (ftKB)		Date	
SUSSEX, ORIGINAL HOLE NIOBRARA, ORIGINAL HOLE NIOBRARA, ORIGINAL HOLE CODELL, ORIGINAL HOLE CODELL, ORIGINAL HOLE			6	1,410.00		1,411.00		4/8/2019	
			6	1,710.00		1,711.00		4/8/2019	
			14	4,415.00		4,447.00		9/14/1994	
			64	6,785.00		6,802.00		5/10/2011	
			64	6,884.00		6,900.00		5/10/2011	
			48	7,014.00		7,026.00		5/24/1993	
			48	7,014.00		7,026.00		7/29/2005	
Stimulation Intervals									
Zone			Start Date			Top (ftKB)		Btm (ftKB)	
SUSSEX, ORIGINAL HOLE			9/19/1994			4,415.0		4,447.0	
NIOBRARA, ORIGINAL HOLE			5/24/2011			6,785.0		6,900.0	
CODELL, ORIGINAL HOLE			5/26/1993			7,014.0		7,026.0	
CODELL, ORIGINAL HOLE			8/16/2005			7,017.0		7,026.0	
Other In Hole									
Run Date		Des				OD (in)	Top (ftKB)	Btm (ftKB)	
4/5/2019		Cast Iron Bridge Plug w/ 2 SX Cement				3.068	6,690.0	6,736.0	
4/8/2019		Cast Iron Bridge Plug w/ 2 SX Cement				3.068	4,315.0	4,361.0	
4/9/2019		Cement Retainer				3.068	1,446.0	1,447.0	
Logs									
Date		Type				Top, MD (ftKB)		Btm, MD (ftKB)	
5/20/1993		COMPENSATED DENSITY				3,800.0		7,200.0	
5/20/1993		INDUCTION				3,800.0		4,650.0	
5/24/1993		CEMENT BOND				3,540.0		7,162.0	
5/8/2017		GYRO				10.0		6,900.0	
4/8/2019		RADIAL CEMENT				10.0		3,000.0	

Well Name: CAMOLO RED D27-04

VERTICAL, ORIGINAL HOLE, 7/2/2019 3:45:13 PM

Plug Back Total Depths

