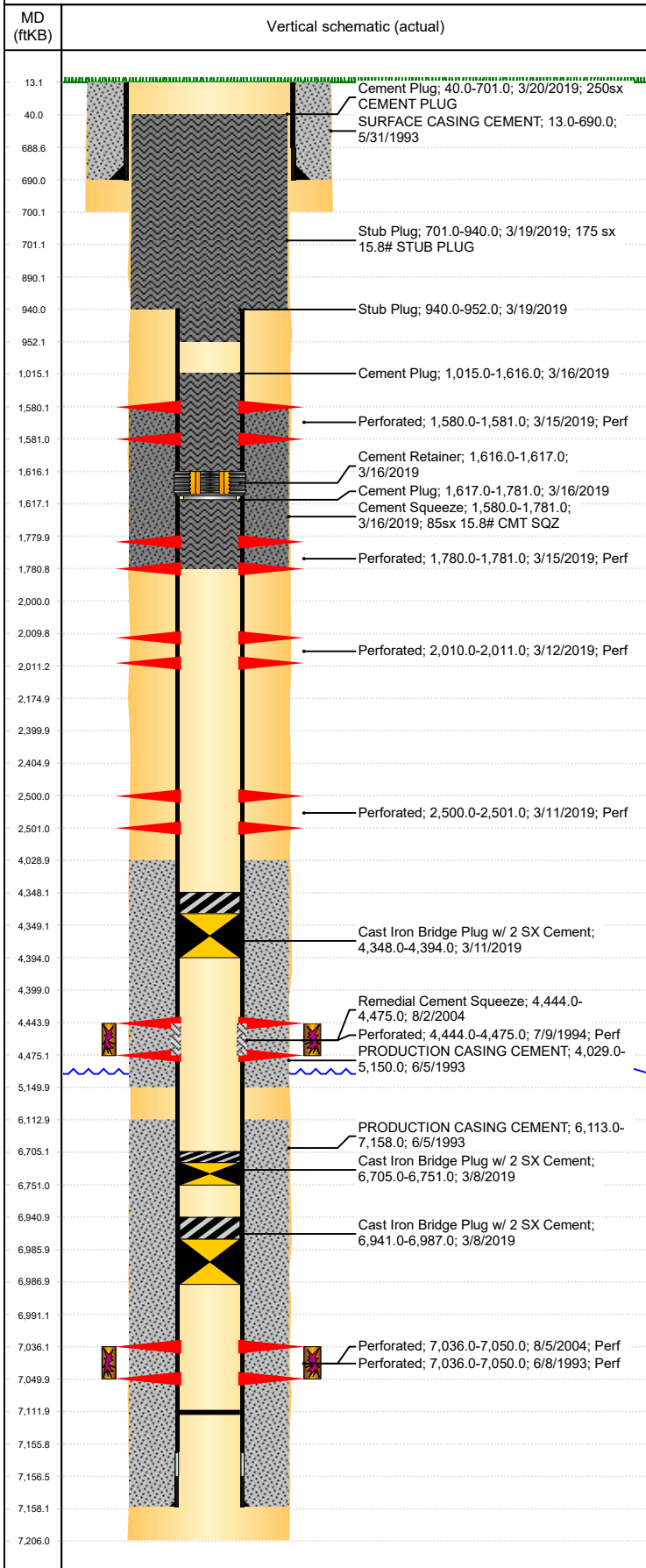


**Well Name: CAMOLO RED D27-05**

VERTICAL, ORIGINAL HOLE, 7/2/2019 3:35:08 PM



Well Header									
API 05-123-17007		Business Unit DJ BASIN			District 15		Well Config VERTICAL		
KB - GL / MSL (ft... 13.00		Spud Date 5/31/1993		P & A Date 5/15/2019		Well Production Status PA			SoRT Yes
Comment									
Surface Location (Congressional)									
Qtr 3 SW	Qtr 4 NW	Section 27	Twnshp 3	Twnsh... N	Range 64	Rng E/... W	Actual Latitude (°) 40.19826361	Actual Longitude (°) -104.54437928	
Wellbore Sections									
Section Des			Size (in)			Act Top, MD (ftKB)		Act Btm, MD (ftKB)	
SURFACE			12 1/4			13		700	
PRODUCTION			7 7/8			700		7,206	
Casing Strings									
Csg Des		Run Date		OD (in)	Wt/Len (lb/ft)	Grade	Top, MD (ftKB)	MD (ftKB)	
Surface		5/31/1993		8 5/8	24.00	?	13.0	690.0	
Production		6/5/1993		3 1/2	7.70	M-75	13.0	7,158.0	
Cement									
Des				Start Date		Top (ftKB)		Btm (ftKB)	
SURFACE CASING CEMENT				5/31/1993		13.0		690.0	
PRODUCTION CASING CEMENT				6/5/1993		4,029.0		5,150.0	
PRODUCTION CASING CEMENT				6/5/1993		6,113.0		7,158.0	
Remedial Cement Squeeze				8/2/2004		4,444.0		4,475.0	
Cement Plug				3/16/2019		1,617.0		1,781.0	
Cement Plug				3/16/2019		1,015.0		1,616.0	
Cement Squeeze				3/16/2019		1,580.0		1,781.0	
Stub Plug				3/19/2019		940.0		952.0	
Stub Plug				3/19/2019		701.0		940.0	
Cement Plug				3/20/2019		40.0		701.0	
Zone Statuses									
Zone Name	Status Date	Status	Fluid Type	Job			Prod Method		
CODELL	3/10/2017	SI		PLUG AND ABANDON, 3/8/2019 07:00 RE-FRAC, 7/30/2004 00:00 PLUG AND ABANDON, 3/8/2019 07:00					
CODELL	3/8/2019	P&A							
SUSSEX	8/2/2004	AB							
SUSSEX	3/11/2019	P&A							
Perforation Data									
Linked Zone		Bnch/Stg	Entered Shot Total	Top (ftKB)		Btm (ftKB)		Date	
SUSSEX, ORIGINAL HOLE CODELL, ORIGINAL HOLE CODELL, ORIGINAL HOLE			6	1,580.00		1,581.00		3/15/2019	
			6	1,780.00		1,781.00		3/15/2019	
			6	2,010.00		2,011.00		3/12/2019	
			6	2,500.00		2,501.00		3/11/2019	
			14	4,444.00		4,475.00		7/9/1994	
			56	7,036.00		7,050.00		8/5/2004	
			56	7,036.00		7,050.00		6/8/1993	
Stimulation Intervals									
Zone			Start Date		Top (ftKB)		Btm (ftKB)		
SUSSEX, ORIGINAL HOLE			7/12/1994		4,444.0		4,475.0		
CODELL, ORIGINAL HOLE			6/8/1993		7,036.0		7,050.0		
CODELL, ORIGINAL HOLE			8/10/2004		7,036.0		7,050.0		
Other In Hole									
Run Date		Des				OD (in)	Top (ftKB)	Btm (ftKB)	
3/8/2019		Cast Iron Bridge Plug w/ 2 SX Cement				3.07	6,705.0	6,751.0	
3/8/2019		Cast Iron Bridge Plug w/ 2 SX Cement				3.07	6,941.0	6,987.0	
3/11/2019		Cast Iron Bridge Plug w/ 2 SX Cement				3.07	4,348.0	4,394.0	
3/16/2019		Cement Retainer				3.07	1,616.0	1,617.0	
Logs									
Date		Type				Top, MD (ftKB)		Btm, MD (ftKB)	
6/4/1993		COMPENSATED DENSITY				3,850.0		7,210.0	
6/4/1993		INDUCTION				3,850.0		7,210.0	
6/8/1993		CBL/CCL/GR				3,840.0		7,140.0	
5/8/2017		GYRO				10.0		6,900.0	
3/12/2018		RADIAL CEMENT				10.0		2,525.0	

**Well Name: CAMOLO RED D27-05**

VERTICAL, ORIGINAL HOLE, 7/2/2019 3:35:09 PM

## Plug Back Total Depths

