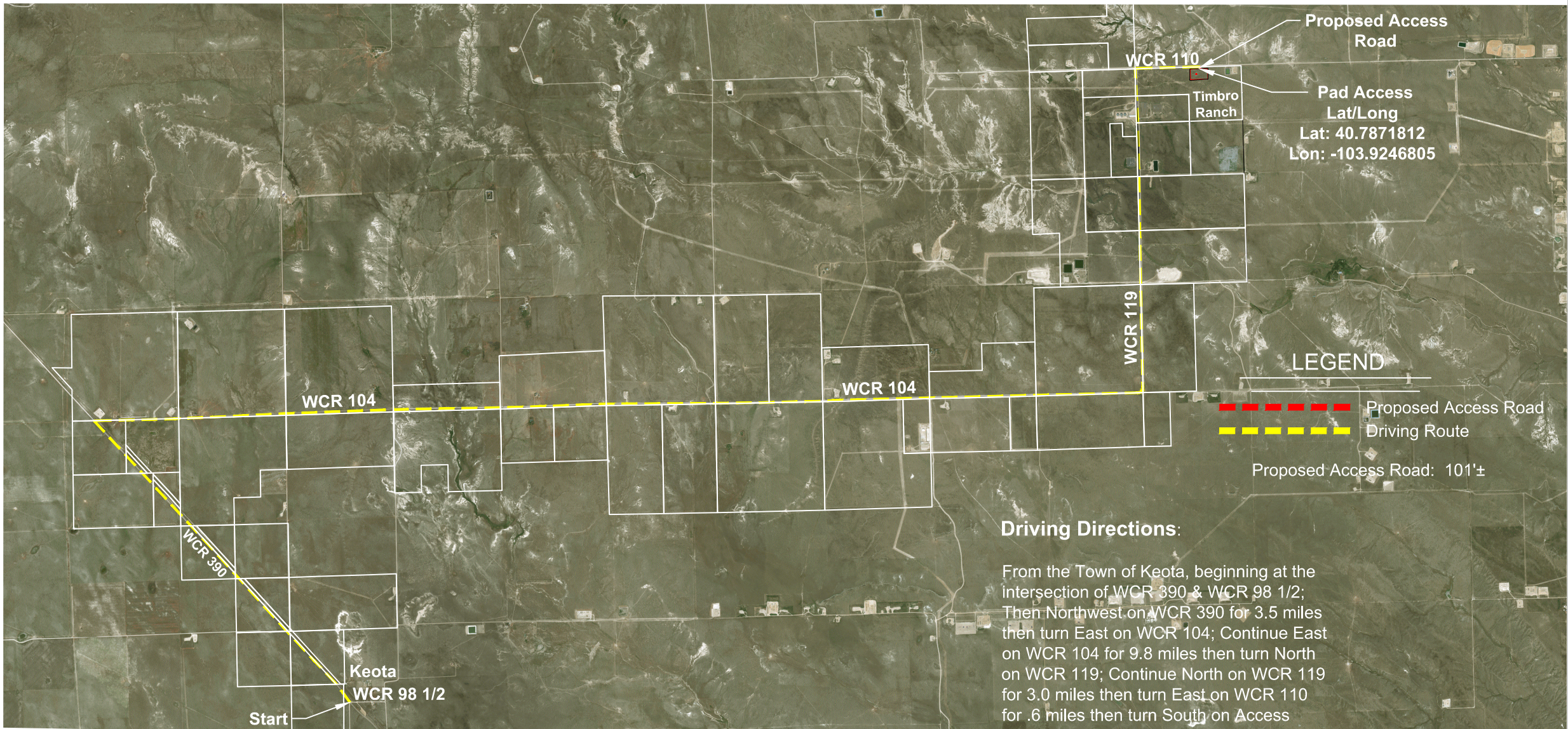


SCALE: 1" = 6000'
0' 3000' 6000'

ACCESS ROAD MAP
NW 1/4 NE 1/4 SECTION 1
T9N R59W 6TH PM
WELD COUNTY, COLORADO



Driving Directions:

From the Town of Keota, beginning at the intersection of WCR 390 & WCR 98 1/2; Then Northwest on WCR 390 for 3.5 miles then turn East on WCR 104; Continue East on WCR 104 for 9.8 miles then turn North on WCR 119; Continue North on WCR 119 for 3.0 miles then turn East on WCR 110 for .6 miles then turn South on Access Road for Timbro 0101 Pad; Continue on Access Road for 101 Feet to Timbro 0101 Pad

VERDAD RESOURCES
TIMBRO 0101
JOB NO. 126032

May 30, 2019
1 OF 1
F2A_TIMBRO_0101_ACCESS_ROAD_MAP

REVISION:	
INT	DATE

NOTE:
ALL PRODUCTION FACILITIES WILL BE ON PAD

