



CEMENT BOND LOG
GAMMA RAY CCL VDL

Company EXTRACTION OIL & GAS
Well GRAEBER 31-33D
Field WATTENBERG
County WELD State COLORADO

Location: API #: 05-123-23664

SESE

Other Services
NONE

SEC 33 TWP 1N RGE 68W

Permanent Datum GL
Log Measured From KB
Drilling Measured From KB
Elevation 5,234'

Elevation
K.B. 5,250'
D.F. 5,249'
G.L. 5,234'

Date 14 JUNE 2019

Run Number	ONE
Depth Driller	8,943'
Depth Logger	2,580'
Bottom Logged Interval	2,580'
Top Log Interval	SURFACE
Open Hole Size	7-7/8"
Type Fluid	WATER
Density / Viscosity	8.34 PPG
Max. Recorded Temp.	N/A
Estimated Cement Top	2,265'
Time Well Ready	ROA
Time Logger on Bottom	07:30
Equipment Number	25
Location	PLATTEVILLE, CO
Recorded By	B. TURNBULL
Witnessed By	C. EAST

Borehole Record			Tubing Record		
Run Number	Bit	From	To	Size	Weight
					From
					To

Casing Record	Size	Mgt/Ft	Top	Bottom
Surface String	8-5/8"	24#	SURFACE	1,124'
Prot. String				
Production String	4-1/2"	11.6#	SURFACE	8,933'
Liner				

<<< Fold Here >>>

All interpretations are opinions based on inferences from electrical or other measurements and we cannot and do not guarantee the accuracy or correctness of any interpretation, and we shall not, except in the case of gross or willful negligence on our part, be liable or responsible for any loss, costs, damages, or expenses incurred or sustained by anyone resulting from any interpretation made by any of our officers, agents or employees. These interpretations are also subject to our general terms and conditions set out in our current Price Schedule.

Comments

CEMENT BOND LOG RECORDED AS PER CUSTOMER REQUEST
LOGGED UNDER 0 PSI INDUCED SURFACE PRESSURE & 16' KB
ESTIMATED TOP OF CEMENT @ 2,265'

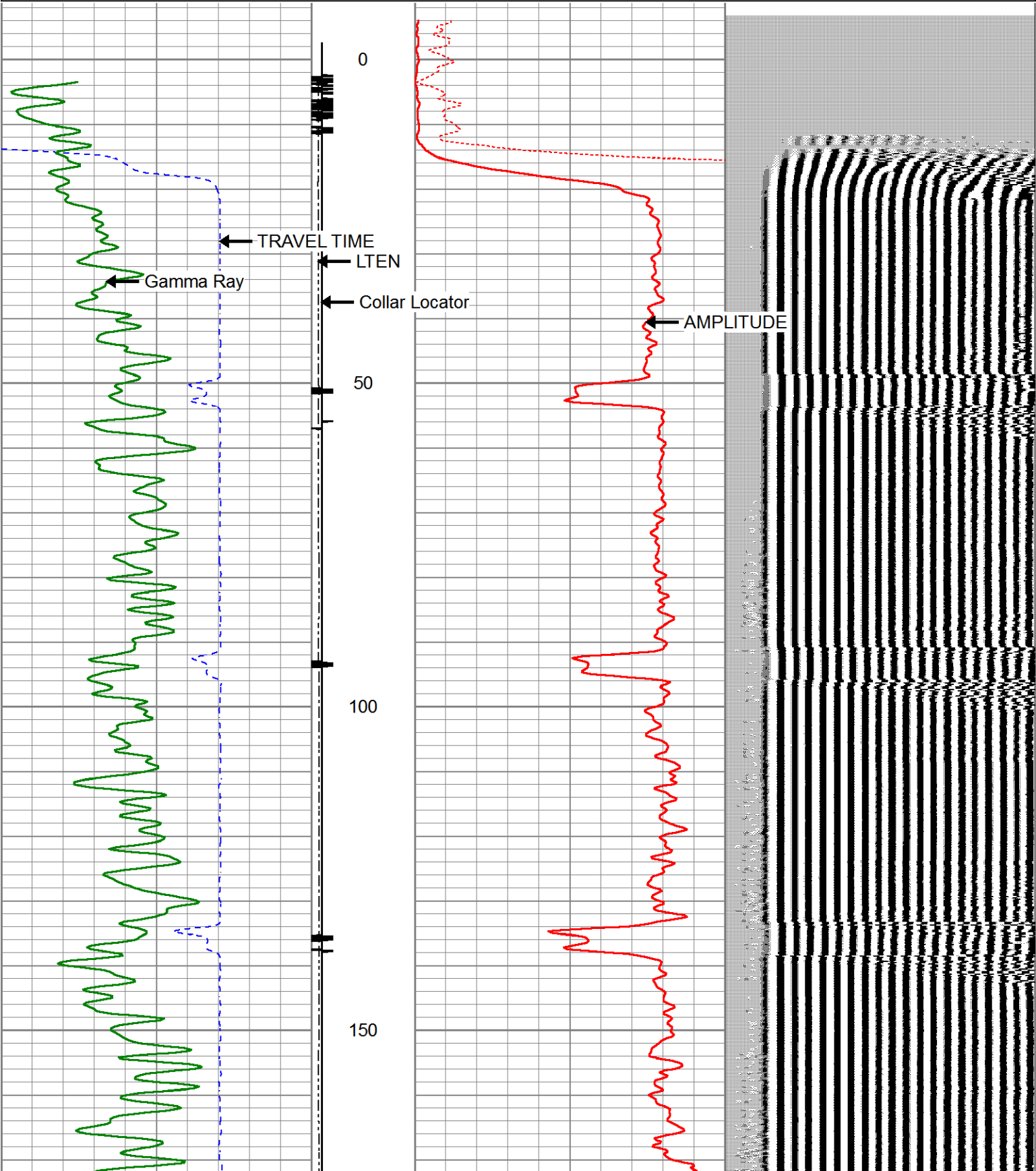
THANK YOU FOR USING KLX ENERGY SERVICES

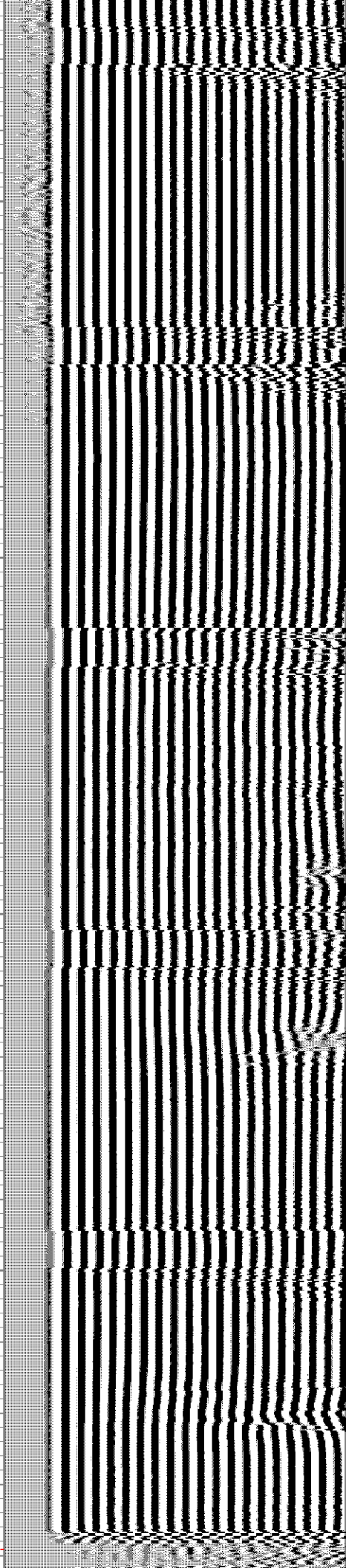
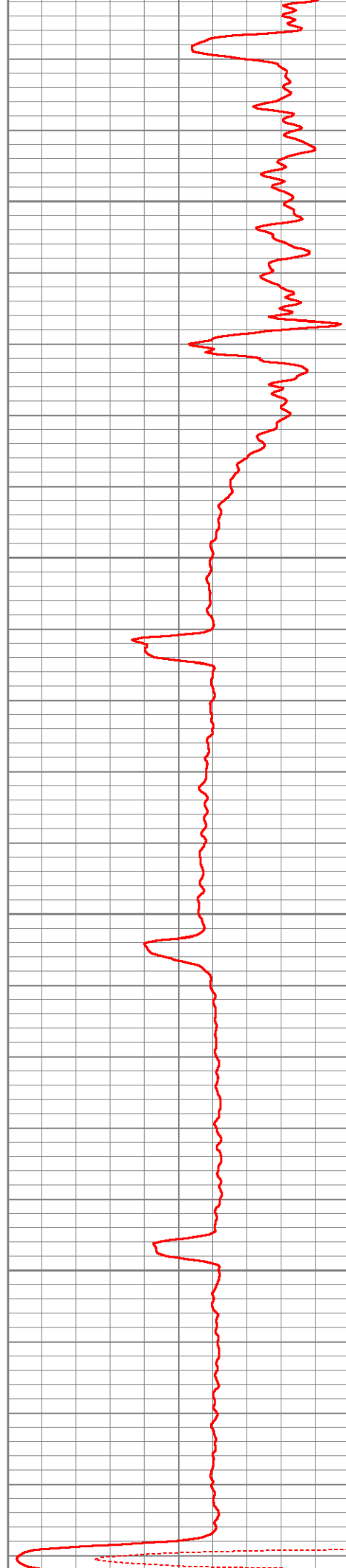
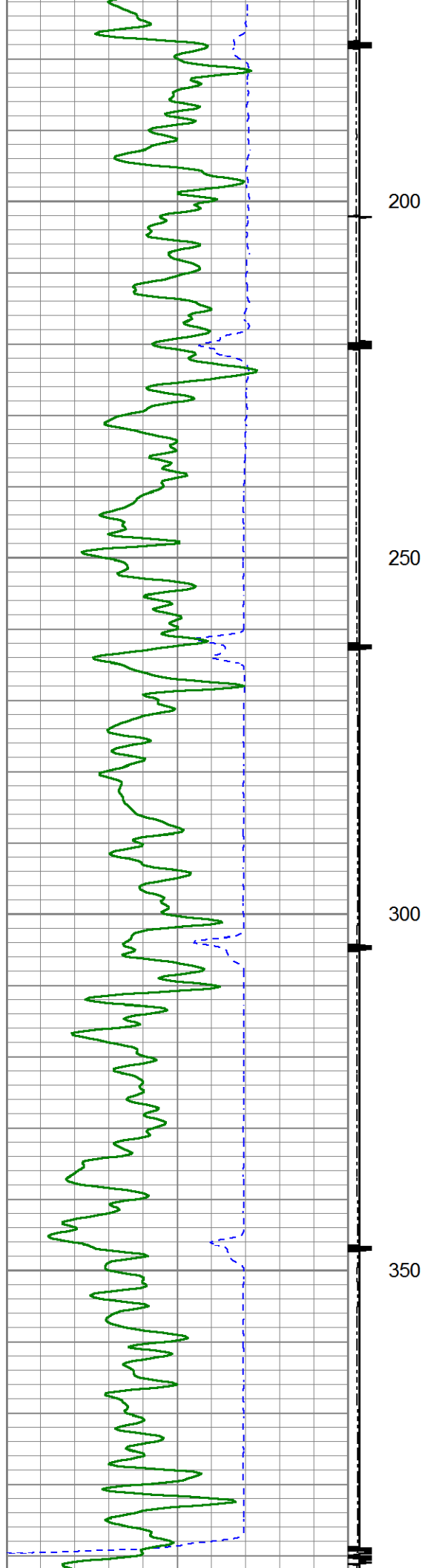


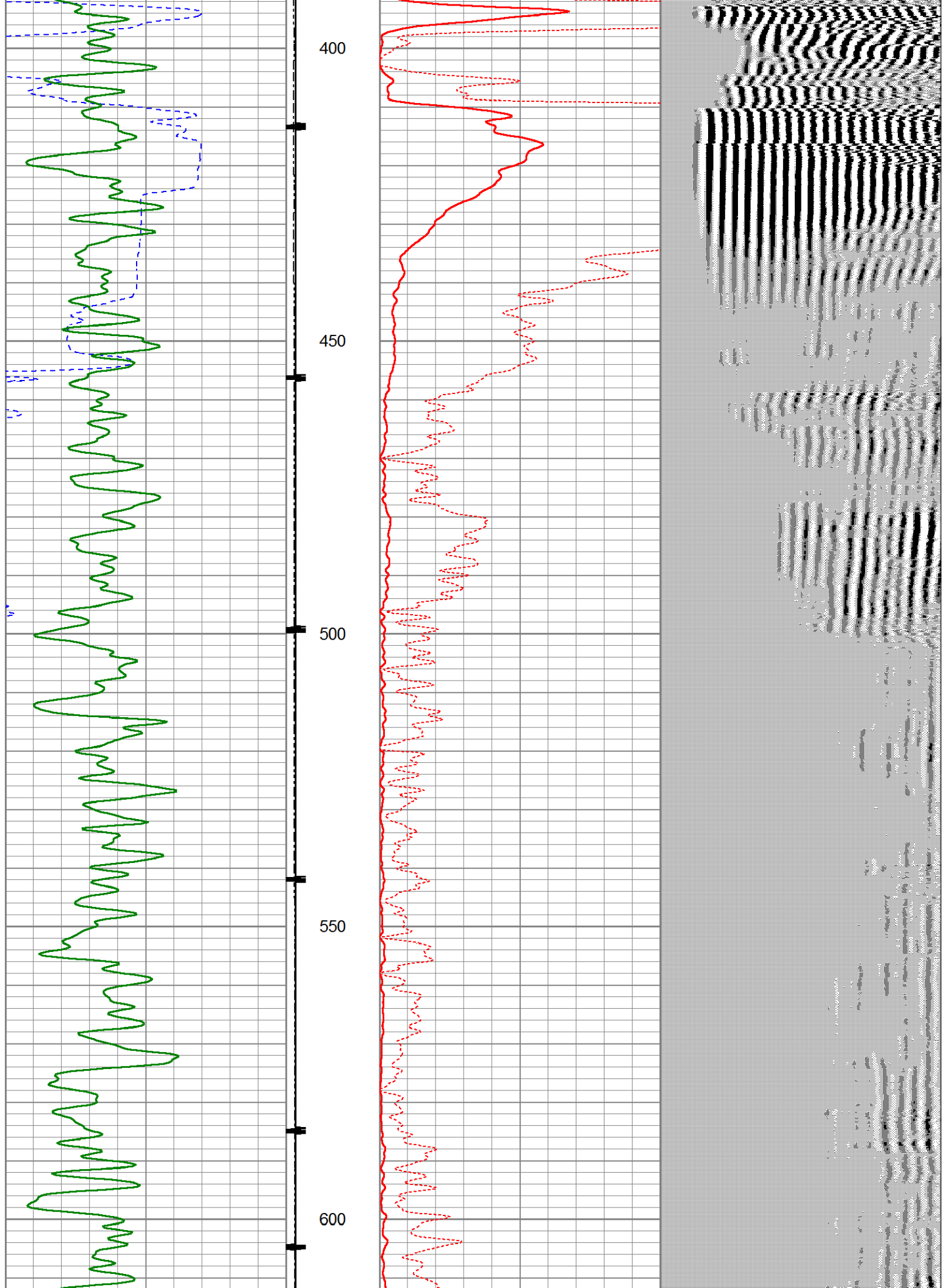
MAIN PASS

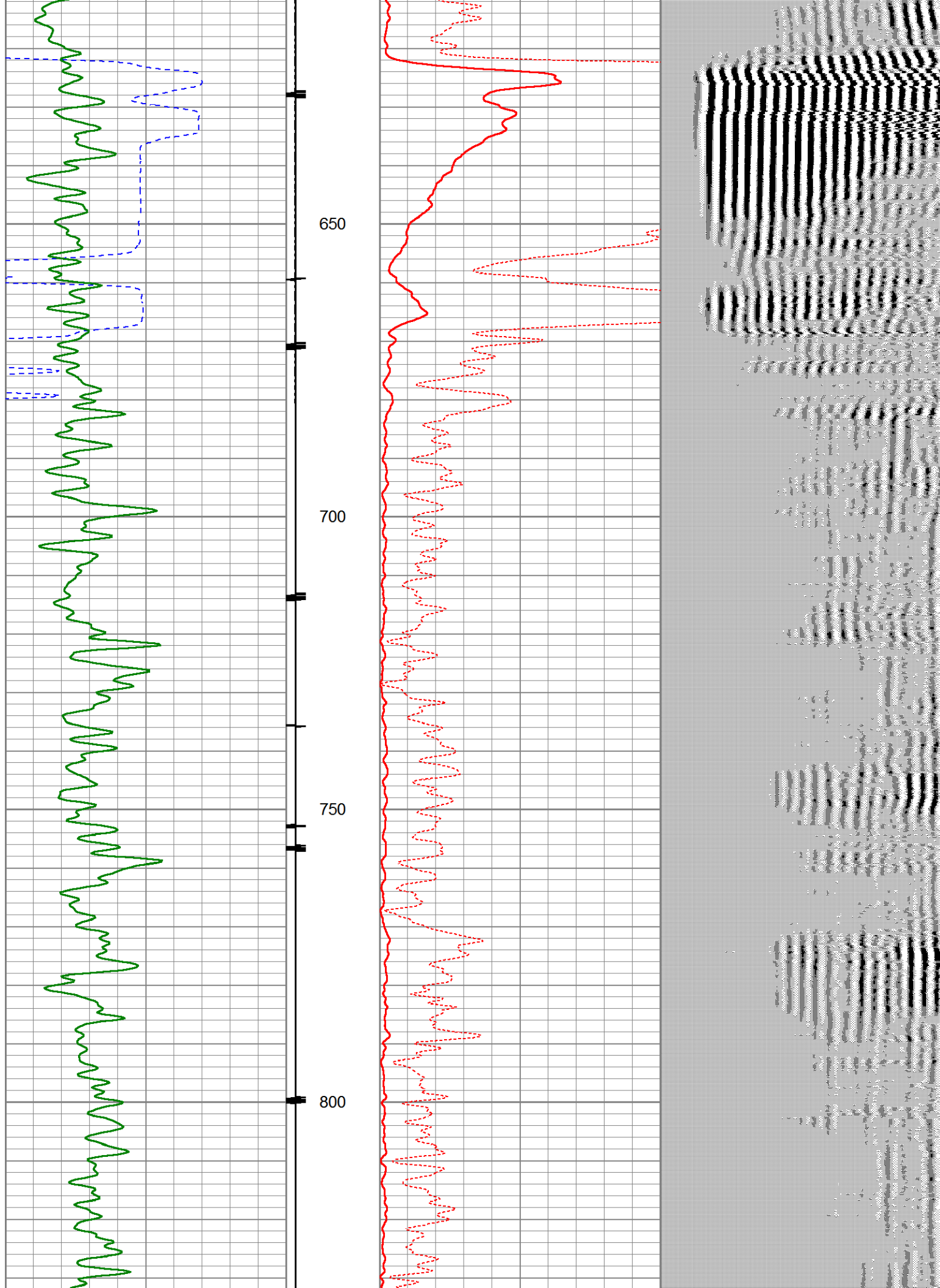
Database File	xog_cbl_6-14-19.db
Dataset Pathname	pass3.4
Presentation Format	cbl_drs
Dataset Creation	Fri Jun 14 08:00:43 2019
Charted by	Depth in Feet scaled 1:240

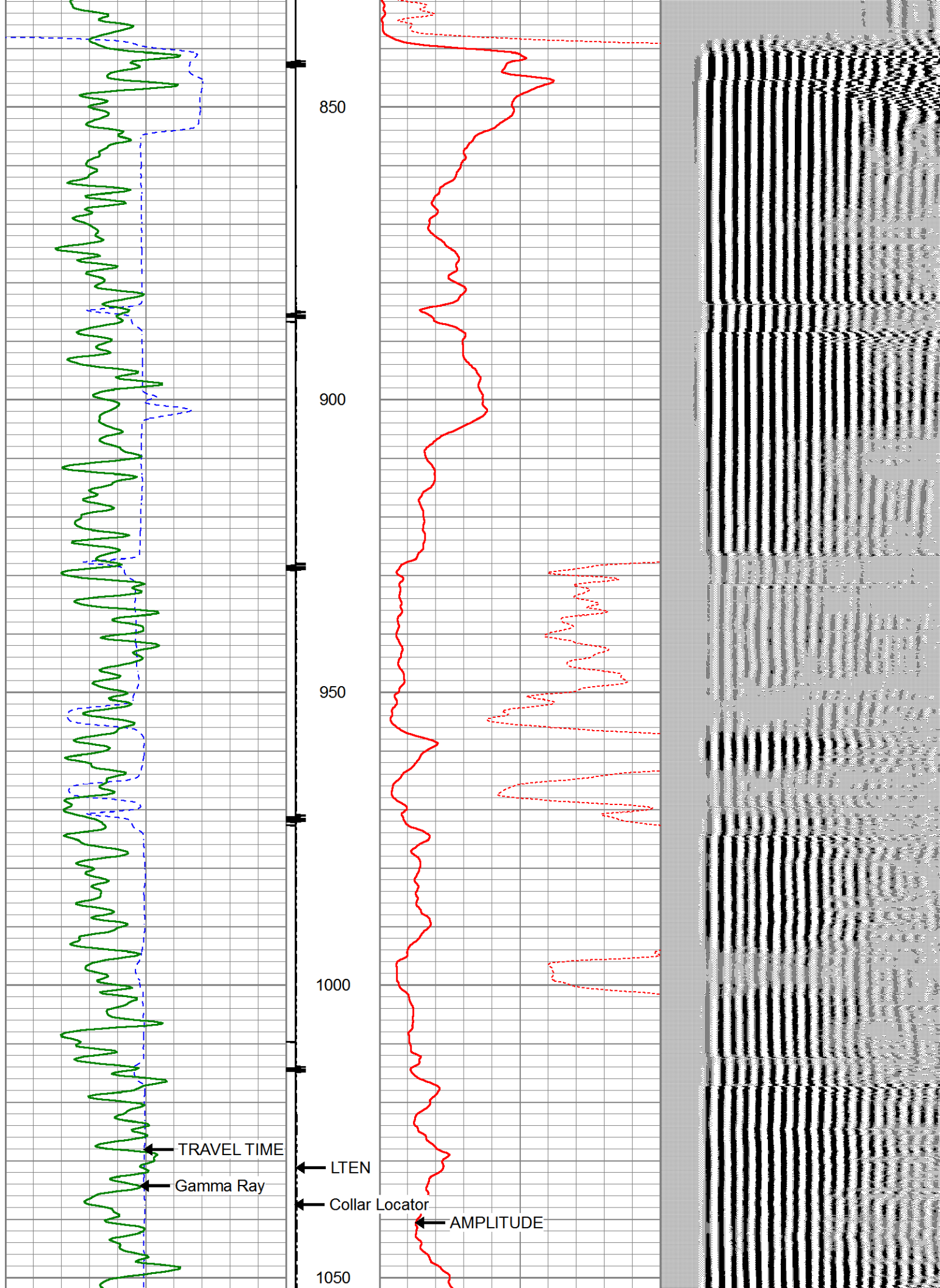
400	TRAVEL TIME (usec)	200	Collar Locator	0	AMP AMPLITUDE (mV)	10	200	VDL (usec)	1200
0	Gamma Ray (GAPI)	150	-1	9 0	AMPLITUDE (mV)	100			
			LTEN						
			0 (lb2000)						

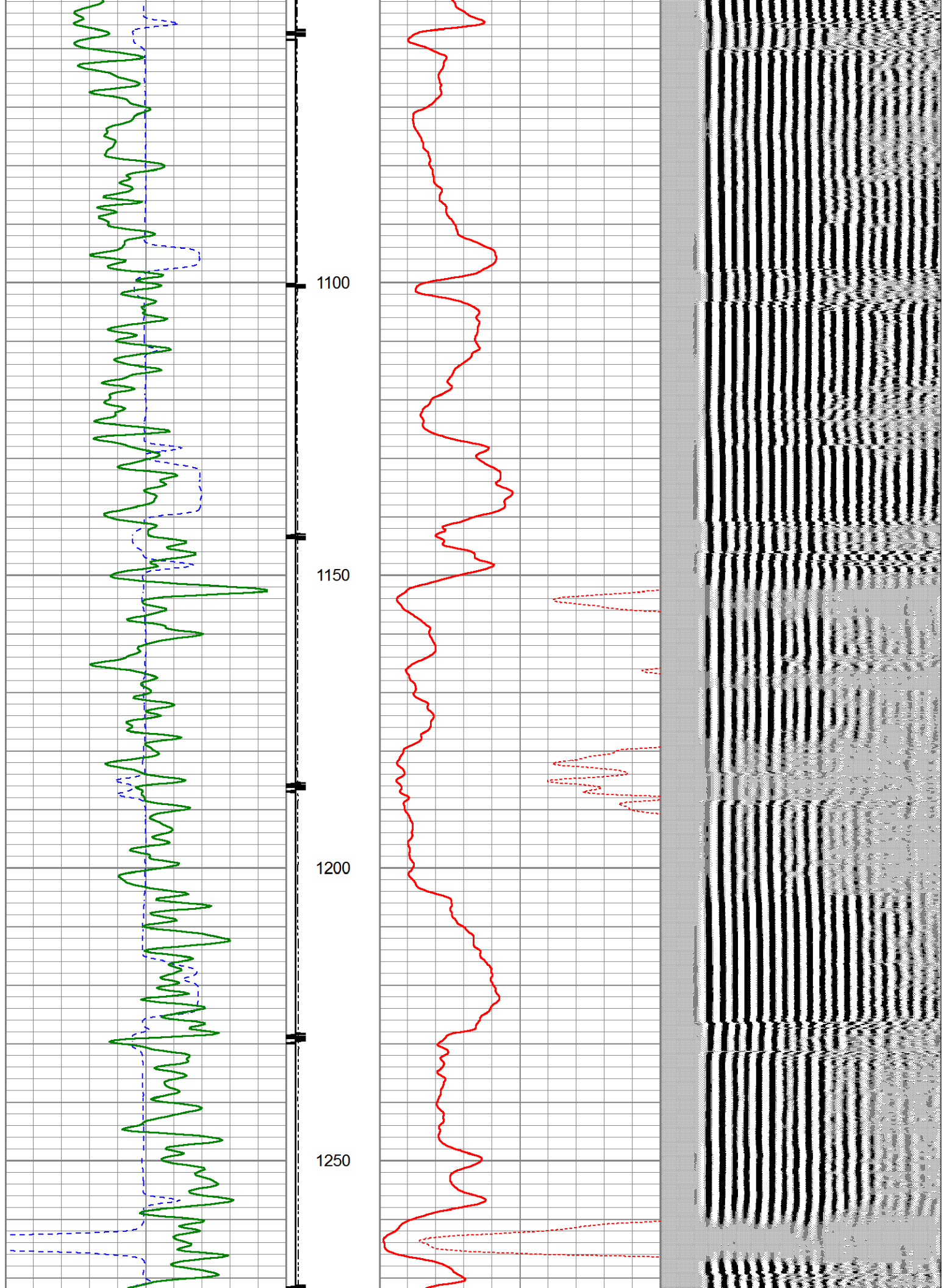


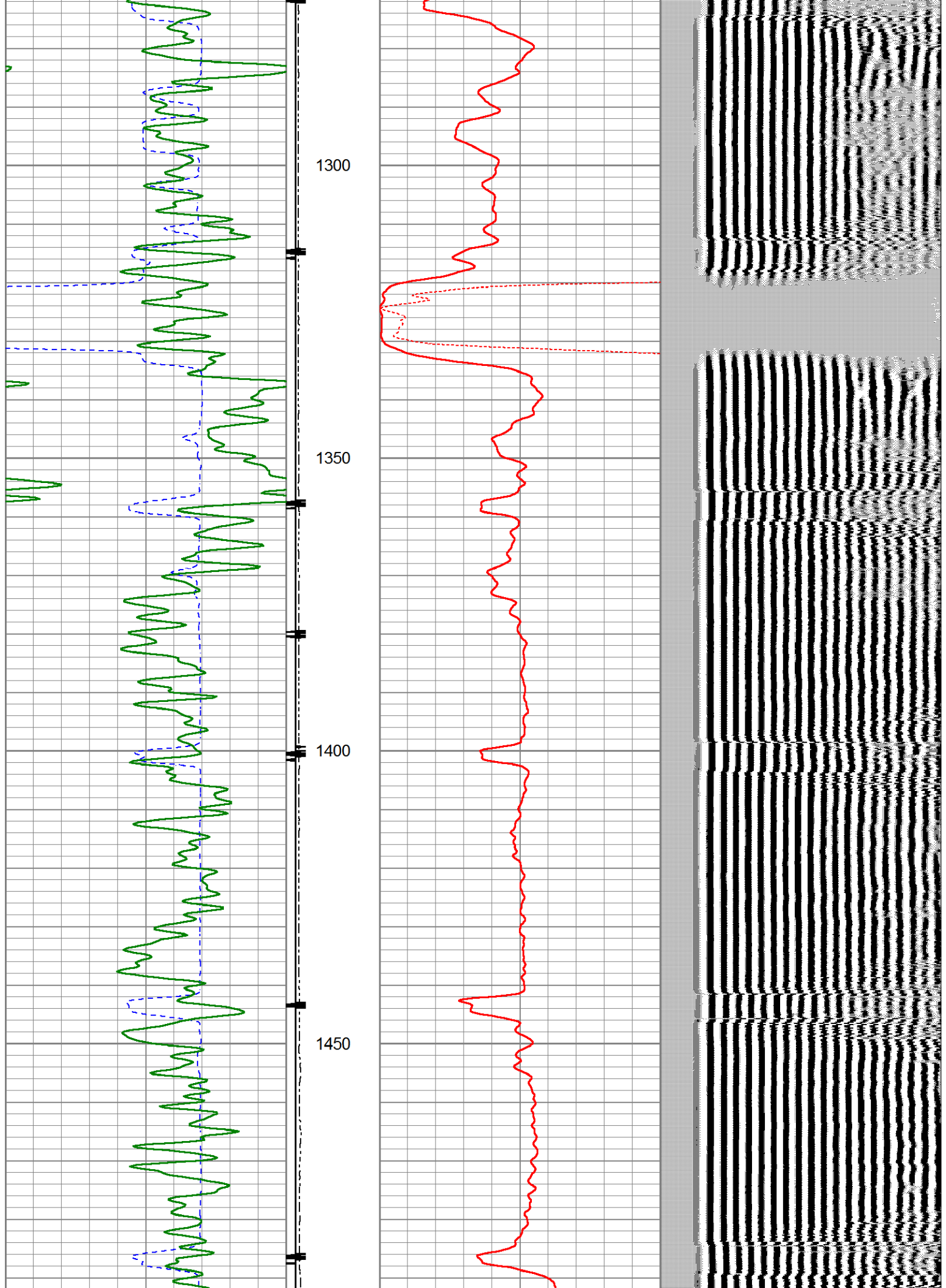


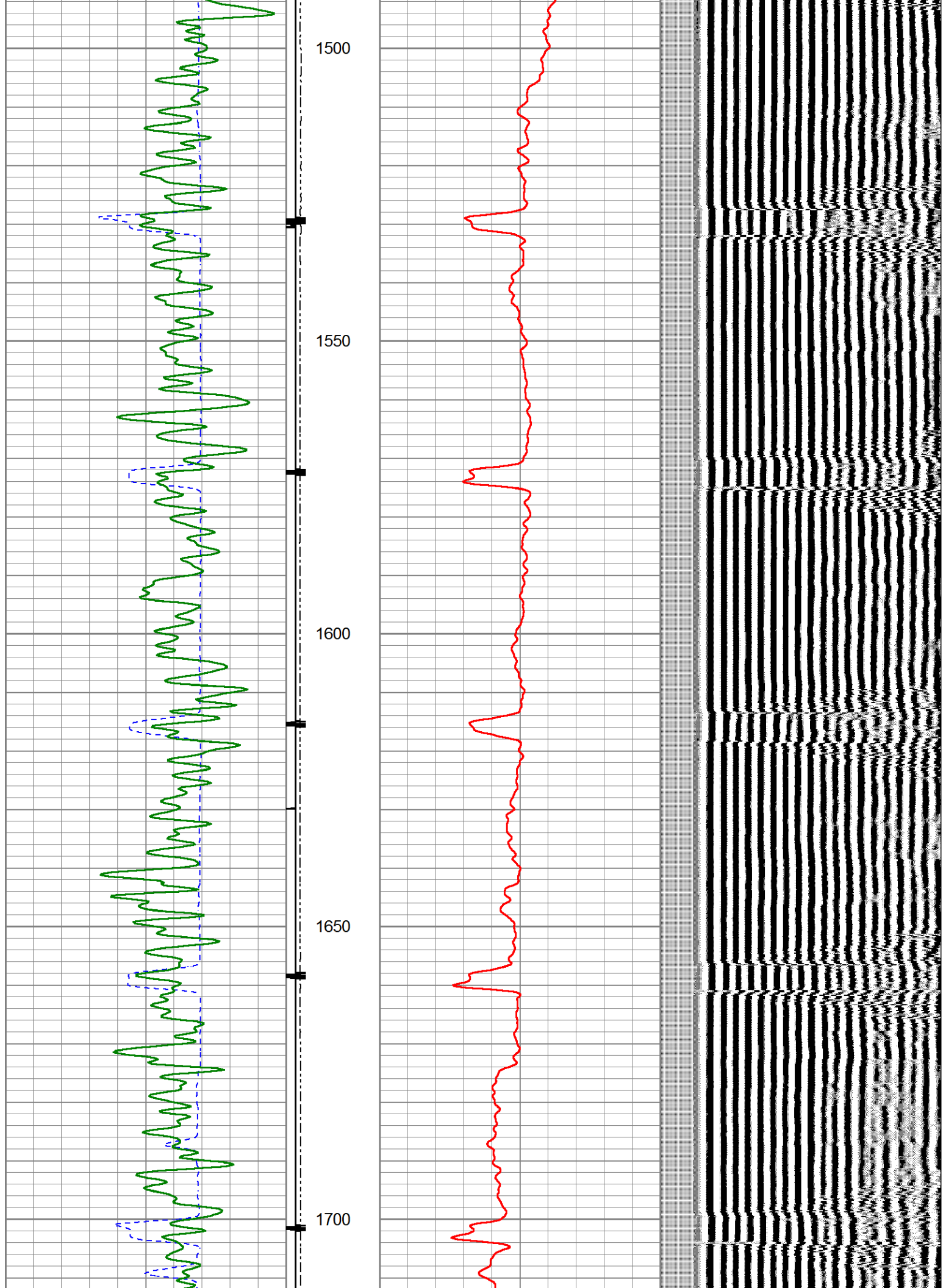


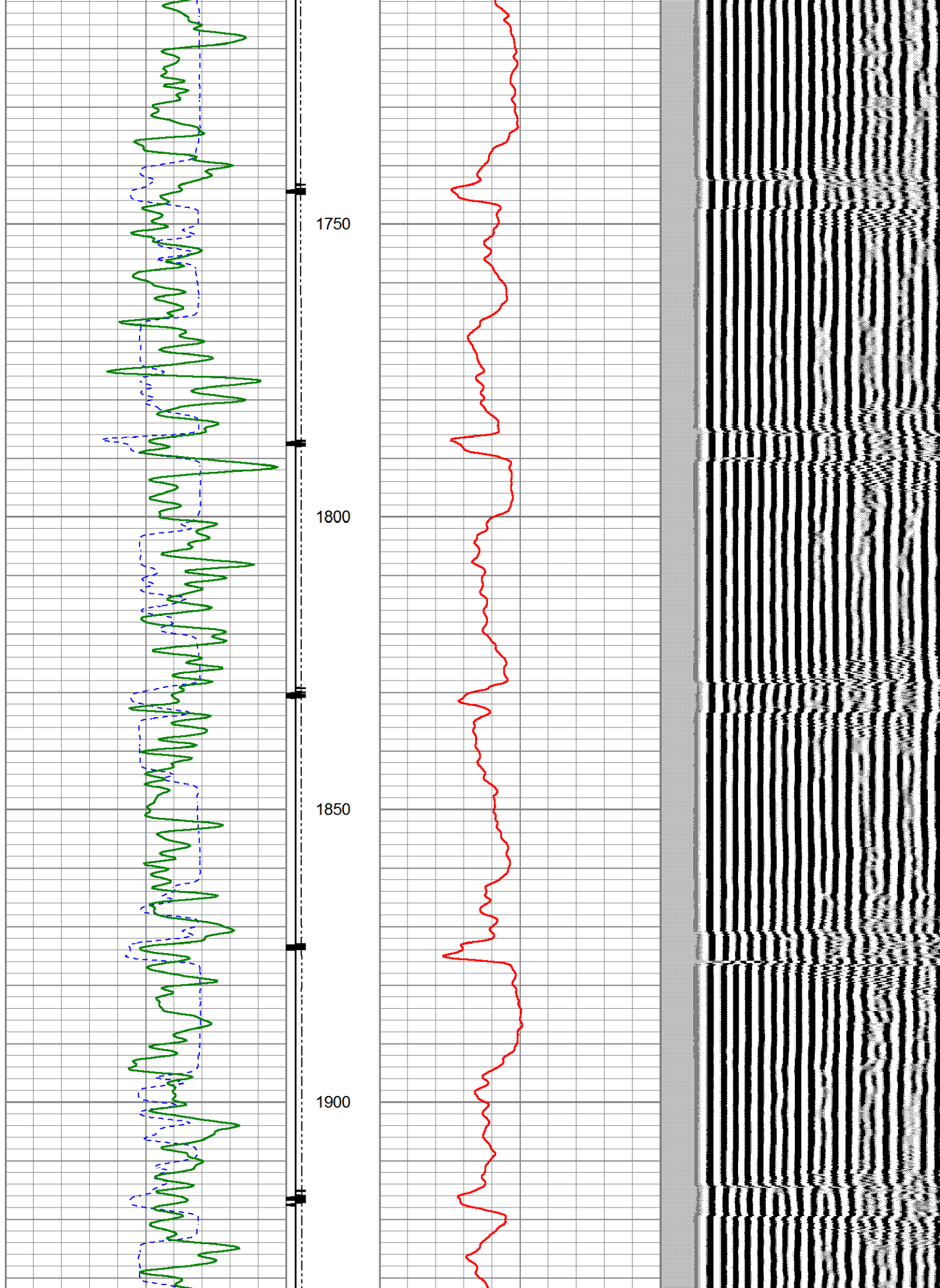


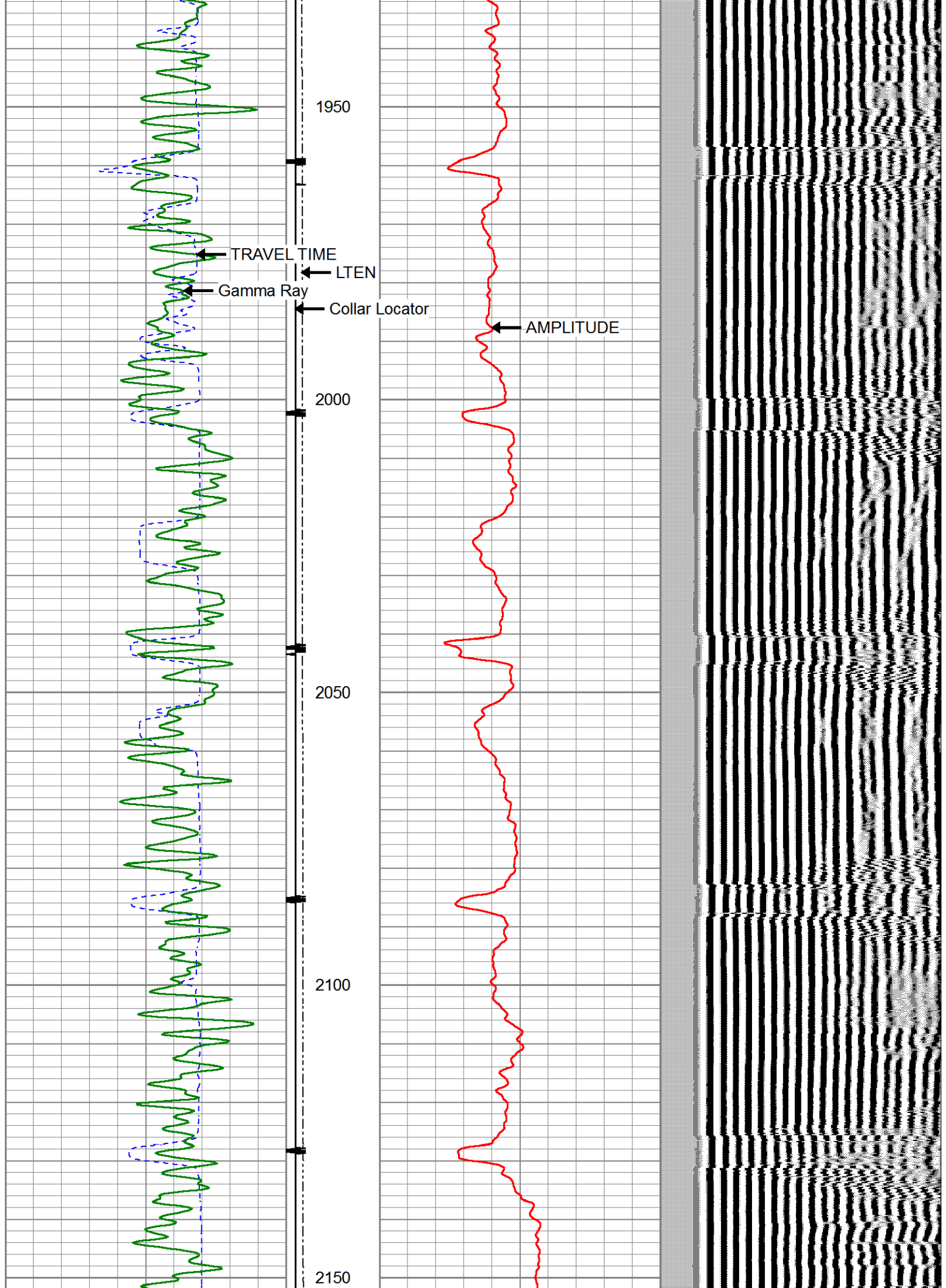


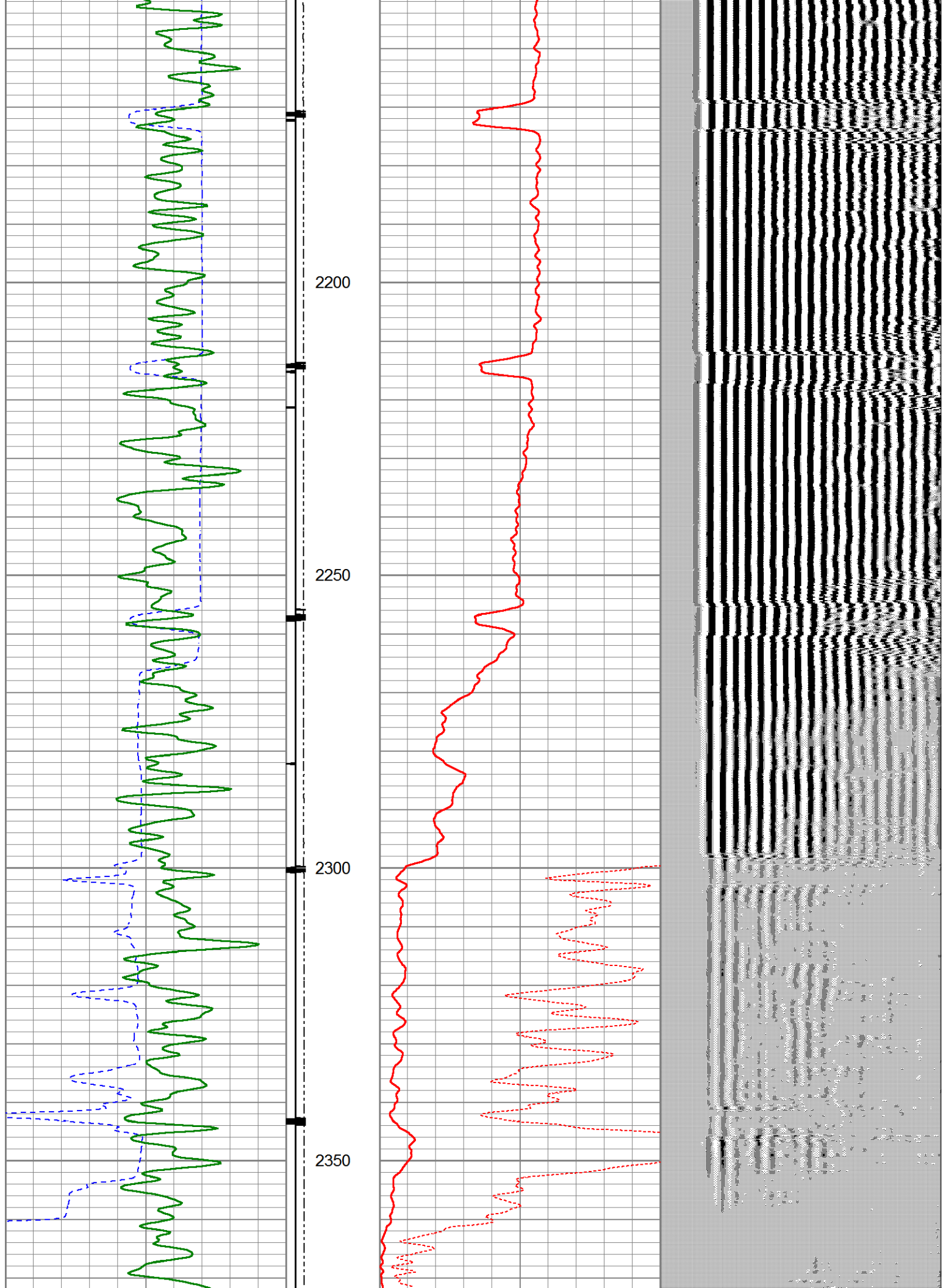


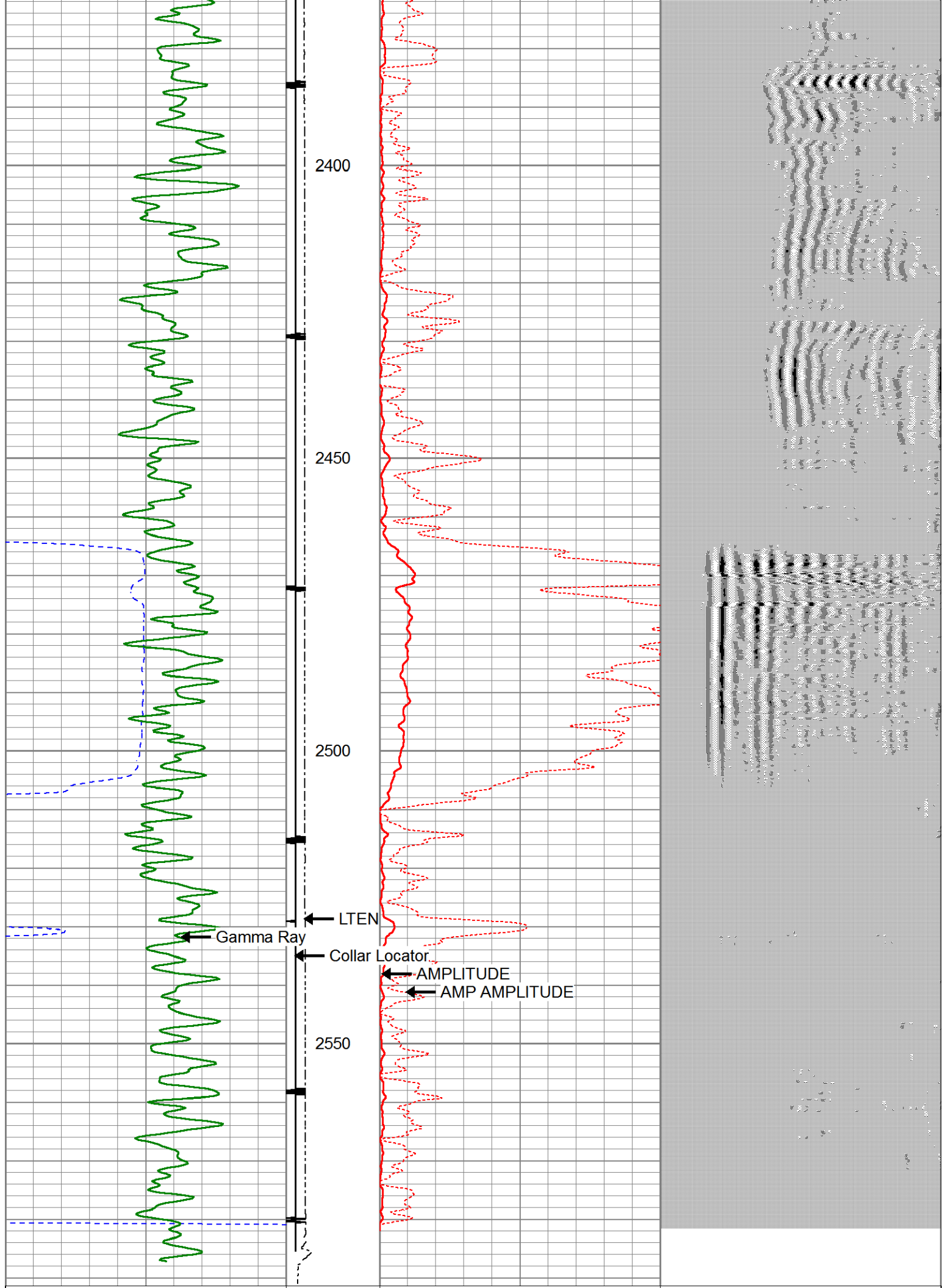












Dataset:	xog_cbl_6-14-19.db: field/well/run1/pass3.4
Total length:	16.75 ft
Total weight:	152.00 lb
O.D.:	2.75 in

Calibration Report

Database File	xog_cbl_6-14-19.db
Dataset Pathname	pass3.4
Dataset Creation	Fri Jun 14 08:00:43 2019

Gamma Ray Calibration Report

Serial Number:	080828	
Tool Model:	Probe275dig	
Performed:	(Not Performed)	
Calibrator Value:	1.0	GAPI
Background Reading:	0.0	cps
Calibrator Reading:	1.0	cps
Sensitivity:	1.0000	GAPI/cps

Segmented Cement Bond Log Calibration Report

Serial Number:	FW1306-47	
Tool Model:	Probe 2.75 Radii W/Temp	
Calibration Casing Diameter:	4.500	in
Calibration Depth:	2591.608	ft

Master Calibration, performed Fri Jun 14 07:28:22 2019:

	Raw (v)		Calibrated (mv)		Results	
	Zero	Cal	Zero	Cal	Gain	Offset
3'	0.005	0.569	0.000	81.196	143.983	0.000
CAL	0.710	0.639				
5'	0.010	0.575	0.000	81.196	143.784	-1.455
SUM						
S1	0.054	0.496	0.000	100.000	225.874	-12.091
S2	0.013	0.547	0.000	100.000	187.357	-2.411
S3	0.014	0.581	0.000	100.000	176.324	-2.484
S4	0.012	0.577	0.000	100.000	177.071	-2.170
S5	0.012	0.563	0.000	100.000	181.460	-2.131
S6	0.011	0.532	0.000	100.000	191.999	-2.088
S7	0.011	0.567	0.000	100.000	179.586	-1.914
S8	0.015	0.577	0.000	100.000	178.017	-2.629

Internal Reference Calibration, performed (Not Performed):

	Raw (v)		Calibrated (v)		Results	
	Zero	Cal	Zero	Cal	Gain	Offset
CAL	0.000	0.000	0.710	0.639	1.000	0.000

Air Zero Calibration, performed Fri Jun 14 06:44:47 2019:

	Raw (v)	Calibrated (v)	Results
--	---------	----------------	---------

	Raw (v)	Calibrated (v)	Results
	<u>Zero</u>	<u>Zero</u>	<u>Offset</u>
3'	0.000	0.000	0.000
5'	0.000	0.000	0.000
SUM			
S1	0.000	0.000	0.000
S2	0.000	0.000	0.000
S3	0.000	0.000	0.000
S4	0.000	0.000	0.000
S5	0.000	0.000	0.000
S6	0.000	0.000	0.000
S7	0.000	0.000	0.000
S8	0.000	0.000	0.000