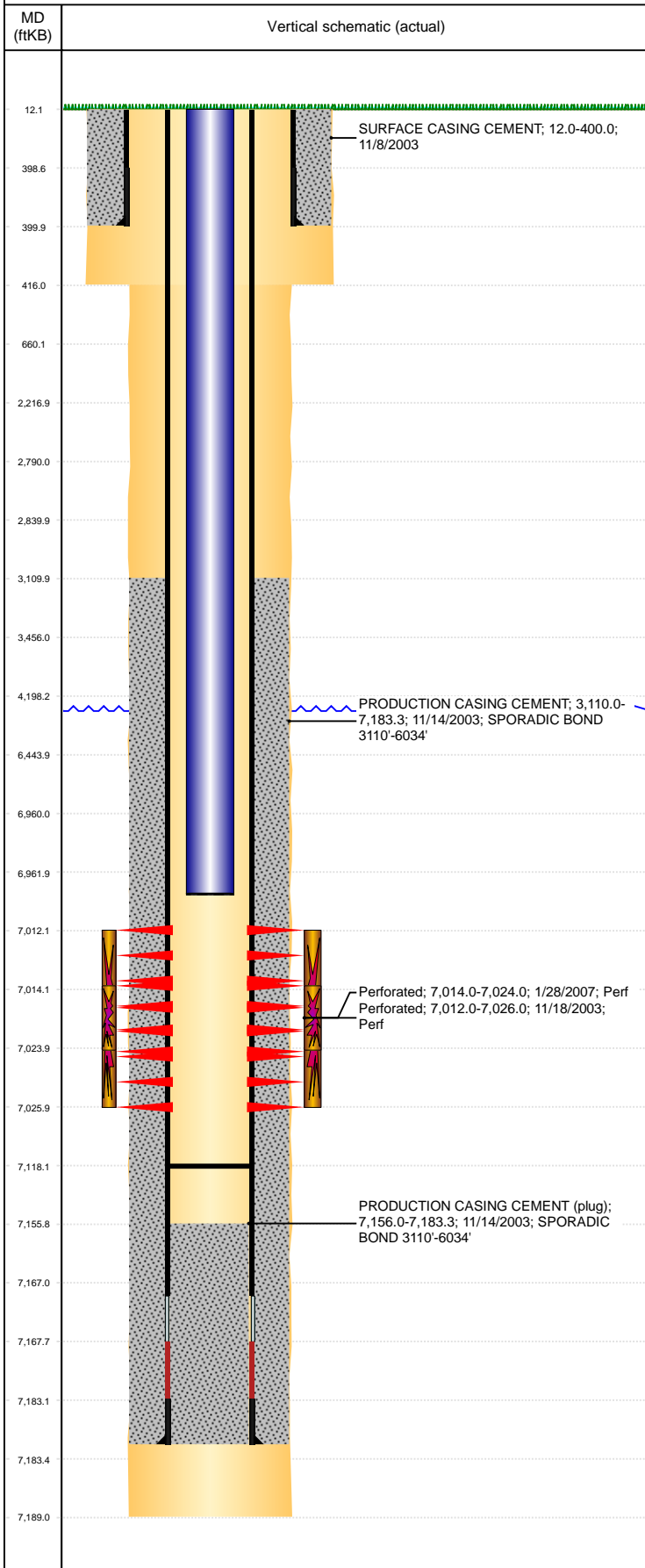


Well Name: UHRICH 17-21

VERTICAL, ORIGINAL HOLE, 7/2/2019 11:17:32 AM



Well Header									
API 05-123-21658		Business Unit DJ BASIN			District 15		Well Config VERTICAL		
KB - GL / MSL (ft... 12.00		Spud Date 11/7/2003		P & A Date		Well Production Status PR			SoRT No
Comment									
Surface Location (Congressional)									
Qtr 3 NE	Qtr 4 NW	Section 17	Twnshp 6	Twnsh... N	Range 64	Rng E... W	Actual Latitude (°) 40.49147500		Actual Longitude (°) -104.57651500
Wellbore Sections									
Section Des			Size (in)			Act Top, MD (ftKB)		Act Btm, MD (ftKB)	
SURFACE			12 1/4			12		416	
PRODUCTION			7 7/8			416		7,189	
Casing Strings									
Csg Des			Run Date		OD (in)	Wt/Len (lb/ft)	Grade	Top, MD (ftKB)	MD (ftKB)
Surface			11/8/2003		8 5/8	24.00		12.0	400.0
Production			11/14/2003		4 1/2	11.60		12.0	7,183.3
Cement									
Des					Start Date		Top (ftKB)		Btm (ftKB)
SURFACE CASING CEMENT					11/8/2003		12.0		400.0
PRODUCTION CASING CEMENT					11/14/2003		3,110.0		7,183.3
Zone Statuses									
Zone Name		Status Date	Status	Fluid Type	Job				Prod Method
CODELL		2/17/2007	PR	Oil	RE-FRAC, 1/25/2007 00:00				
CODELL		8/17/2010	PR	Water					Flowing
Perforation Data									
Linked Zone			Bnch/Stg	Entered Shot Total	Top (ftKB)		Btm (ftKB)		Date
CODELL, ORIGINAL HOLE				56	7,012.00		7,026.00		11/18/2003
CODELL, ORIGINAL HOLE				40	7,014.00		7,024.00		1/28/2007
Stimulation Intervals									
Zone				Start Date		Top (ftKB)		Btm (ftKB)	
CODELL, ORIGINAL HOLE				11/20/2003		7,012.0		7,026.0	
CODELL, ORIGINAL HOLE				1/29/2007		7,014.0		7,024.0	
Other In Hole									
Run Date		Des				OD (in)	Top (ftKB)	Btm (ftKB)	
3/27/2019		Plunger Lift				1 7/8			
Logs									
Date		Type				Top, MD (ftKB)		Btm, MD (ftKB)	
11/15/2003		COMPENSATED DENSITY				3,550.0		7,169.0	
11/15/2003		INDUCTION				402.0		7,189.0	
11/18/2003		CBL/CCL/GR				2,788.0		7,152.0	
10/25/2016		GYRO				0.0		4,200.0	
Plug Back Total Depths									
Date		Type		Com				Depth (ftKB)	
11/17/2003		FILL		DEPTH LOGGER ON CBL				7,156.0	
2/1/2007		FILL		TAGGED FILL				7,118.0	