

# Inspection Photos

07/01/2019

Operator: FOUNDATION ENERGY  
MANAGEMENT LLC # 10112

Location ID: 447523  
Weld County, CO

Aaron Trujillo  
NE Reclamation Specialist  
COGCC

## Inspection Photos

Operator Name: FOUNDATION ENERGY MANAGEMENT LLC # 10112

Location ID: 447523



**Photo 1:** Photo taken from the southwest end of the location, facing east. Photo shows equipment remaining on location.



## Inspection Photos

Operator Name: FOUNDATION ENERGY MANAGEMENT LLC # 10112

Location ID: 447523



**Photo 2:** Photo taken from the south end of the location. Photo shows Diffuse knapweed continues to establish on the location.

## Inspection Photos

Operator Name: FOUNDATION ENERGY MANAGEMENT LLC # 10112

Location ID: 447523



**Photo 3:** Photo taken from the south end of the location. Photo shows Diffuse knapweed continues to establish on the location.

## Inspection Photos

Operator Name: FOUNDATION ENERGY MANAGEMENT LLC # 10112

Location ID: 447523



**Photo 4:** Photo taken from the south end of the location. Photo shows Diffuse knapweed continues to establish on the location.

Inspection Photos

Operator Name: FOUNDATION ENERGY MANAGEMENT LLC # 10112

Location ID: 447523



**Photo 5:** Photo taken from the south end of the location. Photo shows Diffuse knapweed continues to establish on the location.

## Inspection Photos

Operator Name: FOUNDATION ENERGY MANAGEMENT LLC # 10112

Location ID: 447523



**Photo 6:** Photo taken from the south end of the location. Photo shows Diffuse knapweed continues to establish on the location. Photo also shows riser equipment has not been removed.



## Inspection Photos

Operator Name: FOUNDATION ENERGY MANAGEMENT LLC # 10112

Location ID: 447523



**Photo 7:** Photo taken from the south end of the location, facing southwest. Photo shows Diffuse knapweed has continued to establish on the location and spread onto the adjacent lands.



## Inspection Photos

Operator Name: FOUNDATION ENERGY MANAGEMENT LLC # 10112

Location ID: 447523



**Photo 8:** Photo taken from the southeast end of the location. Photo shows equipment has not been removed from the location, and location has not been reclaimed.



## Inspection Photos

Operator Name: FOUNDATION ENERGY MANAGEMENT LLC # 10112

Location ID: 447523



**Photo 9:** Photo taken from the tanks on the east end of the location. Photo shows Diffuse knapweed continues to establish on the location. Photo also shows equipment has not been removed.

## Inspection Photos

Operator Name: FOUNDATION ENERGY MANAGEMENT LLC # 10112

Location ID: 447523



**Photo 10:** Photo taken from the tanks on the east end of the location. Photo shows Diffuse knapweed continues to establish on the location. Photo also shows equipment has not been removed. Photo also shows tank appears to be leaking and staining the soils.



Inspection Photos

Operator Name: FOUNDATION ENERGY MANAGEMENT LLC # 10112

Location ID: 447523



**Photo 11:** Photo taken from the east end of the location. Photo shows Field Bindweed establishing on location.

## Inspection Photos

Operator Name: FOUNDATION ENERGY MANAGEMENT LLC # 10112

Location ID: 447523



**Photo 12:** Photo taken from the east end of the location, facing north. Photo shows equipment has not been removed from the location, or reclamation conducted.



## Inspection Photos

Operator Name: FOUNDATION ENERGY MANAGEMENT LLC # 10112

Location ID: 447523



**Photo 13:** Photo taken from the northeast end of the location. Photo shows Field bindweed (white flowers) establishing on the location.

## Inspection Photos

Operator Name: FOUNDATION ENERGY MANAGEMENT LLC # 10112

Location ID: 447523



**Photo 14:** Photo taken from the north east end of the location, facing northwest. Photo shows equipment remaining on the location, and location has not been reclaimed.

## Inspection Photos

Operator Name: FOUNDATION ENERGY MANAGEMENT LLC # 10112

Location ID: 447523



**Photo 15:** Photo taken from the north east end of the location, facing west. Photo shows equipment remaining on the location, and location has not been reclaimed.



## Inspection Photos

Operator Name: FOUNDATION ENERGY MANAGEMENT LLC # 10112

Location ID: 447523



**Photo 16:** Photo taken from the roadside ditch on the northwest end of the location. Complainant stated that weeds have spread from the location onto the adjacent lands and the ditch. Photo shows Diffuse knapweed and Field Bindweed.

## Inspection Photos

Operator Name: FOUNDATION ENERGY MANAGEMENT LLC # 10112

Location ID: 447523



**Photo 17:** Photo taken from the adjacent lands to the north of the location. Photo shows noxious weeds have not been managed and continues to spread from the location.

## Inspection Photos

Operator Name: FOUNDATION ENERGY MANAGEMENT LLC # 10112

Location ID: 447523



**Photo 18:** Photo taken from the adjacent lands to the east of the location, facing south. Photo shows noxious weeds have not been managed and continues to spread from the location.

## Inspection Photos

Operator Name: FOUNDATION ENERGY MANAGEMENT LLC # 10112

Location ID: 447523

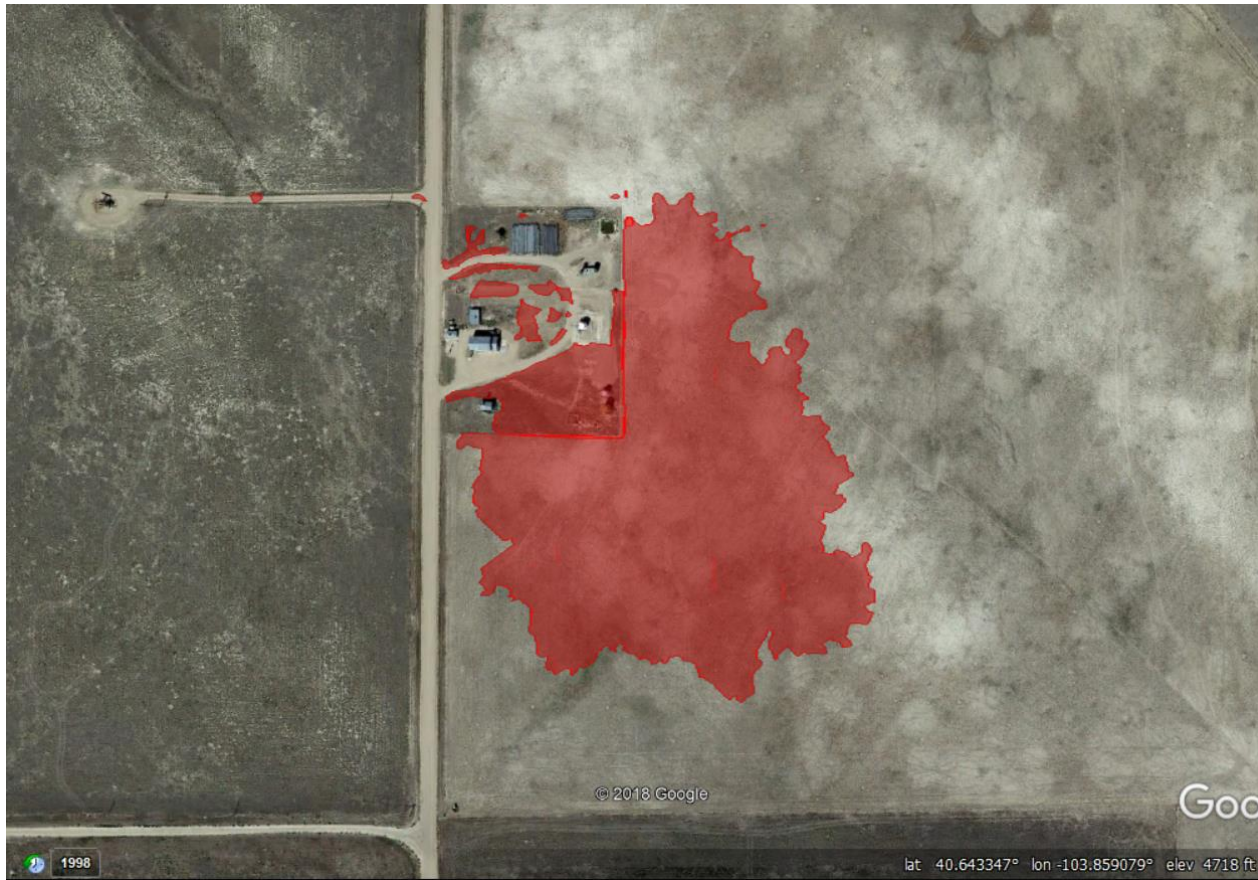


**Photo 19:** Photo taken from the adjacent lands to the east of the location, facing east. Photo shows noxious weeds have not been managed and continues to spread from the location.

## Inspection Photos

Operator Name: FOUNDATION ENERGY MANAGEMENT LLC # 10112

Location ID: 447523



**Photo 20:** Photo copied from photo documentation within a previous inspection. Photo shows areas where diffuse knapweed was mapped on the location and the adjacent lands. Diffuse knapweed has continued to spread throughout the location and now includes portions of the location to the northeast.

