

HALLIBURTON

iCem[®] Service

HIGHPOINT RESOURCES CORP - EBUS

Anschutz Equus Farms Fed 5-61-34-5649B Intermediate

Sincerely,
Meghan Jacobs

Legal Notice

Disclaimer:

All information in this report is provided subject to the terms and conditions which govern the services provided by Halliburton. Halliburton personnel use their best efforts in gathering information and their best judgment in interpreting it, but any interpretation, research, analysis or recommendation furnished by Halliburton are opinions based upon inferences from measurements and empirical relationships and assumptions, which inferences and empirical relationships and assumptions are not infallible, and with respect to which professionals in the industry may differ. iCem 3D Displacement results are used to understand how fluids intermix during a cement job. Simulation and 3D displacement results are not intended as and should not be used as a replacement for bond logs in determining top of cement. Current 3D model calculations are known to model more volume than the input volume for standard cases due to known calculation improvements required. For rotational cases, the modeled volume will be impacted by the same calculations impacting the standard cases, as well as additional constraints imposed to make the calculation time required operationally feasible. Therefore, until further notice, 3D displacement results should not be used for replacement of a bond log, or used as an identifier of top of cement. HALLIBURTON IS UNABLE TO GUARANTEE THE ACCURACY OF ANY CHART INTERPRETATION, RESEARCH ANALYSIS, OR JOB RECOMMENDATION and any interpretation or recommendation is not for use of or reliance upon by any third party. The customer has full responsibility for any of its decisions which are based on the information provided in this report.

Table of Contents

1.0	Cementing Job Summary	4
1.1	Executive Summary	4
2.0	Real-Time Job Summary	7
2.1	Job Event Log	7
3.0	Attachments.....	9
3.1	AEFF 5-61-34-5649B Intermediate – Job Chart with Events.....	9
3.2	AEFF 5-61-34-5649B Intermediate – Job Chart without Events	10

1.0 Cementing Job Summary

1.1 Executive Summary

Halliburton appreciates the opportunity to perform the cementing services on the **AEFF 5-61-34-5649B** cement **Intermediate** casing job. A pre-job safety meeting was held before the job where details of the job were discussed, potential safety hazards were reviewed, and environmental compliance procedures were outlined.

Approximately 1 bbl of cement were returned to surface.

Halliburton maintains a continuous quality improvement process and appreciates any comments or suggestions that you may have. Halliburton again thanks you for the opportunity to perform service work on this well. We hope to be your solutions provider for future projects.

Respectfully,

Halliburton Fort Lupton

The Road to Excellence Starts with Safety

Sold To #: 343492		Ship To #: 3912055		Quote #:		Sales Order #: 0905597343					
Customer: HIGHPOINT RESOURCES CORP-EBUS					Customer Rep: Chris Moore						
Well Name: ANSCHUTZ EQUUS FARMS FED			Well #: 5-61-34-5649B			API/UWI #: 05-123-48183-00					
Field: WATTENBERG		City (SAP): ROGGEN		County/Parish: WELD			State: COLORADO				
Legal Description: NE SE-34-5N-61W-1685FSL-270FEL											
Contractor: CADE DRLG					Rig/Platform Name/Num: CADE 24						
Job BOM: 7523 7523											
Well Type: HORIZONTAL OIL											
Sales Person: HALAMERICA\H181357					Srv Supervisor: Nicholas Cummins						
Job											
Formation Name											
Formation Depth (MD)		Top 1011ft			Bottom			6305ft			
Form Type					BHST						
Job depth MD		6290ft			Job Depth TVD			5838			
Water Depth					Wk Ht Above Floor			4ft			
Perforation Depth (MD)		From			To						
Well Data											
Description	New / Used	Size in	ID in	Weight lbm/ft	Thread	Grade	Top MD ft	Bottom MD ft	Top TVD ft	Bottom TVD ft	
Casing		9.625	8.921	36			0	1011			
Casing		7	6.366	23	8 RD		0	6290	0	0	
Open Hole Section			8.75				1011	6305		0	
Tools and Accessories											
Type	Size in	Qty	Make	Depth ft		Type	Size in	Qty	Make		
Guide Shoe	7	1		6290		Top Plug	7	1			
Float Shoe	7					Bottom Plug	7				
Float Collar	7	1		6245		SSR plug set	7				
Insert Float	7					Plug Container	7	1	HES		
Stage Tool	7					Centralizers	7				
Fluid Data											
Stage/Plug #: 1											
Fluid #	Stage Type	Fluid Name			Qty	Qty UoM	Mixing Density lbm/gal	Yield ft³/sack	Mix Fluid Gal	Rate bbl/min	Total Mix Fluid Gal
1	Water Spacer	Water Spacer			0	bbl	8.33				q

Fluid #	Stage Type	Fluid Name	Qty	Qty UoM	Mixing Density lbm/gal	Yield ft ³ /sack	Mix Fluid Gal	Rate bbl/min	Total Mix Fluid Gal
2	ElastiCem	ELASTICEM (TM) SYSTEM		sack	13.2	1.57	7.53	8	5535
3	Fresh Water		0	bbl	8.33				
Cement Left In Pipe									
Amount		45 ft			Reason			Shoe Joint	
Mix Water:	pH 7	Mix Water Chloride:	<400 ppm		Mix Water Temperature:	60 °F			
Cement Temperature:	58 °F	Plug Displaced by:	8.33 lb/gal		Disp. Temperature:	60 °F			
Plug Bumped?	Yes	Bump Pressure:	1900 psi MPa		Floats Held?	Yes/No			
Cement Returns:	1 bbl	Returns Density:	13.2 lb/gal		Returns Temperature:				
Comment									

2.0 Real-Time Job Summary

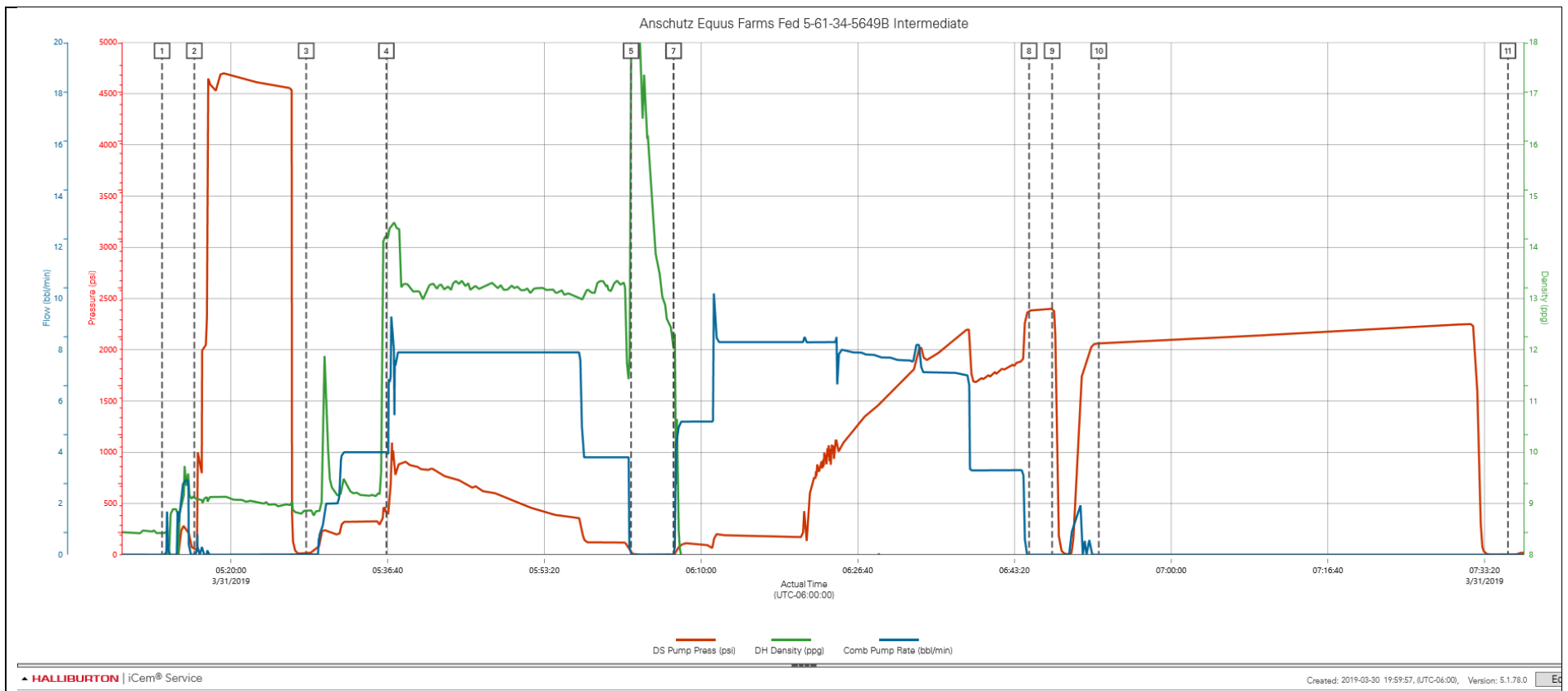
2.1 Job Event Log

Type	Seq. No.	Activity	Graph Label	Date	Time	Source	DS Pump Press <i>(psi)</i>	DH Density <i>(ppg)</i>	Comb Pump Rate <i>(bbl/min)</i>	Comments
Event	1	Call Out	Call Out	3/30/2019	18:00:00	USER				The crew was called out on 1/13/19 at 1200. The customer requested HES on location at 1800 on 1/13/19.
Event	2	Depart from Service Center or Other Site	Depart from Service Center or Other Site	3/30/2019	23:00:00	USER				The crew held a pre journey safety meeting discussing the route and potential hazards while driving The supervisor called in a journey. The crew departed service center.
Event	3	Arrive at Location from Service Center	Arrive at Location from Service Center	3/31/2019	00:30:00	USER				The crew arrived on location safely. The rig was still running casing. The supervisor met with the Company man and received numbers. TD 6,305', TP 6,290' 7" 23# J-55, ST 45', PC 1,011' 9 5/8" 36# J-55, TVD 5,838', OH 8 3/4", Mud 9.9 ppg.
Event	4	Assessment Of Location Safety Meeting	Assessment Of Location Safety Meeting	3/31/2019	00:40:00	USER				Crew discussed all potential hazards on location.
Event	5	Pre-Rig Up Safety Meeting	Pre-Rig Up Safety Meeting	3/31/2019	00:50:00	USER				Crew held a safety meeting discussing the rig up procedure. Also all potential hazards associated with rigging up all HES equipment and lines.
Event	6	Rig-Up Equipment	Rig-Up Equipment	3/31/2019	02:45:00	USER				The crew rigged up all HES equipment and lines.
Event	7	Rig-Up Completed	Rig-Up Completed	3/31/2019	03:20:00	USER				Rig up completed, no one got hurt.
Event	8	Safety Meeting - Pre Job	Safety Meeting - Pre Job	3/31/2019	04:15:00	USER	-2.00	0.00	0.00	The crew and all personal involved with cement job discussed all potential hazards associated with job. Followed by the job procedure to ensure everyone understood the plan of action
Event	9	Start Job	Start Job	3/31/2019	05:12:40	COM1	-1.00	8.44	0.00	
Event	10	Test Lines	Test Lines	3/31/2019	05:16:06	COM1	49.00	9.12	0.00	
Event	11	Pump Spacer 1	Pump Spacer 1	3/31/2019	05:28:00	COM1	18.00	8.86	0.00	

Event	12	Pump Cement	Pump Cement	3/31/2019	05:36:32	COM1	411.00	14.21	4.00	We pumped 206 bbls (735sks) at 8 bpm pressure was at 700 psi. 13.2 ppg 1.57 yield 7.54 gal/sk. We verified density with pressurized scales.
Event	13	Shutdown	Shutdown	3/31/2019	06:02:33	COM1	18.00	17.67	0.00	Shutdown to drop top plug.
Event	14	Drop Top Plug	Drop Top Plug	3/31/2019	06:07:03	COM1	0.00	12.01	0.00	Company man witnessed top plug drop.
Event	15	Pump Displacement	Pump Displacement	3/31/2019	06:07:05	COM1	0.00	12.11	0.00	We pumped a calculated displace of 245BBLS. Displacement was pumped at an 8BPM rate and we adjusted rate accordingly due to pressures.
Event	16	Bump Plug	Bump Plug	3/31/2019	06:44:53	COM1	2379.00	7.76	0.00	We bumped the plug. Final circulating pressure was 1900PSI. We brought pressure 500PSI over and shut down.
Event	17	Other	Check Floats	3/31/2019	06:47:20	COM1	2401.00	7.72	0.00	WE bled pressure back to the truck. 2BBLS came back and floats held.
Event	18	Other	Casing Test	3/31/2019	06:52:18	COM1	2062.00	7.73	0.00	We pressured up to 2000PSI and held for 30 minutes.
Event	19	End Job	End Job	3/31/2019	07:35:49	COM1	2.00	7.62	0.00	Cement Job complete. Estimated 1BBL of Cement back to surface.
Event	20	Pre-Rig Down Safety Meeting	Pre-Rig Down Safety Meeting	3/31/2019	07:36:00	USER	2.00	7.63	0.00	Crew held a safety meeting discussing the rig down procedure. Also all potential hazards associated with rigging down all HES equipment and lines.
Event	21	Rig-Down Equipment	Rig-Down Equipment	3/31/2019	07:46:00	USER				The crew rigged down all HES equipment and lines.
Event	22	Rig-Down Completed	Rig-Down Completed	3/31/2019	09:00:00	USER				Rig down completed no one got hurt.
Event	23	Pre-Convoy Safety Meeting	Pre-Convoy Safety Meeting	3/31/2019	09:15:00	USER				The crew held a pre journey safety meeting discussing the route and potential hazards while driving The supervisor called in a journey.
Event	24	Depart Location for Service Center or Other Site	Depart Location for Service Center or Other Site	3/31/2019	09:30:00	USER				Nick Cummins and crew would like to thank you for your business, and choosing Halliburton Cement! Please feel free to call if you have any questions.

3.0 Attachments

3.1 AEF 5-61-34-5649B Intermediate – Job Chart with Events



3.2 AEF 5-61-34-5649B Intermediate – Job Chart without Events

