

HALLIBURTON

iCem[®] Service

HIGHPOINT RESOURCES CORP - EBUS

ANSCHUTZ EQUUS FARMS FED 5-61-34-4148B Production

Sincerely,
Meghan Jacobs

Legal Notice

Disclaimer:

All information in this report is provided subject to the terms and conditions which govern the services provided by Halliburton. Halliburton personnel use their best efforts in gathering information and their best judgment in interpreting it, but any interpretation, research, analysis or recommendation furnished by Halliburton are opinions based upon inferences from measurements and empirical relationships and assumptions, which inferences and empirical relationships and assumptions are not infallible, and with respect to which professionals in the industry may differ. iCem 3D Displacement results are used to understand how fluids intermix during a cement job. Simulation and 3D displacement results are not intended as and should not be used as a replacement for bond logs in determining top of cement. Current 3D model calculations are known to model more volume than the input volume for standard cases due to known calculation improvements required. For rotational cases, the modeled volume will be impacted by the same calculations impacting the standard cases, as well as additional constraints imposed to make the calculation time required operationally feasible. Therefore, until further notice, 3D displacement results should not be used for replacement of a bond log, or used as an identifier of top of cement. HALLIBURTON IS UNABLE TO GUARANTEE THE ACCURACY OF ANY CHART INTERPRETATION, RESEARCH ANALYSIS, OR JOB RECOMMENDATION and any interpretation or recommendation is not for use of or reliance upon by any third party. The customer has full responsibility for any of its decisions which are based on the information provided in this report.

Table of Contents

1.0 Cementing Job Summary 4

 1.1 Executive Summary4

2.0 Real-Time Job Summary 7

 2.1 Job Event Log7

3.0 Attachments..... 9

 3.1 AEFF 5-61-24-4148B Production – Job Chart with Events.....9

 3.2 AEFF 5-61-24-4148B Production – Job Chart without Events10

1.0 Cementing Job Summary

1.1 Executive Summary

Halliburton appreciates the opportunity to perform the cementing services on the **Well AEFF 5-61-34-4148B** cement **Production** casing job. A pre-job safety meeting was held before the job where details of the job were discussed, potential safety hazards were reviewed, and environmental compliance procedures were outlined.

Halliburton maintains a continuous quality improvement process and appreciates any comments or suggestions that you may have. Halliburton again thanks you for the opportunity to perform service work on this well. We hope to be your solutions provider for future projects.

Respectfully,

Halliburton Fort Lupton

The Road to Excellence Starts with Safety

Sold To #: 343492		Ship To #: 3911976		Quote #:		Sales Order #: 0905576997				
Customer: HIGHPOINT RESOURCES CORP-EBUS				Customer Rep: CHRIS MOORE						
Well Name: ANSCHUTZ EQUUS FARMS FED			Well #: 5-61-34-4148B		API/UWI #: 05-123-48187-00					
Field: WATTENBERG		City (SAP): ROGGEN		County/Parish: WELD		State: COLORADO				
Legal Description: NE SE-34-5N-61W-1685FSL-285FEL										
Contractor: CADE DRLG				Rig/Platform Name/Num: CADE 24						
Job BOM: 7525 7525										
Well Type: HORIZONTAL OIL										
Sales Person: HALAMERICA\H139013				Srv Supervisor: Vitali Neverdasov						
Job										
Formation Name										
Formation Depth (MD)		Top		Bottom						
Form Type				BHST						
Job depth MD		15894ft		Job Depth TVD		5922				
Water Depth				Wk Ht Above Floor						
Perforation Depth (MD)		From		To						
Well Data										
Description	New / Used	Size in	ID in	Weight lbm/ft	Thread	Grade	Top MD ft	Bottom MD ft	Top TVD ft	Bottom TVD ft
Casing		7	6.366	23			0	6262		6262
Casing	0	4.5	4	11.6	8 RD	P-110	0	15894	0	5922
Open Hole Section			6.125				6222	15900	0	0
Tools and Accessories										
Type	Size in	Qty	Make	Depth ft		Type	Size in	Qty	Make	
Guide Shoe	4.5					Top Plug	4.5	1	WHED	
Float Shoe	4.5	1	N/A	15894		Bottom Plug	4.5			
Float Collar	4.5	1	N/A	15838		SSR plug set	4.5			
Insert Float	4.5					Plug Container	4.5	0	HES	
Stage Tool	4.5					Centralizers	4.5	122	N/A	
Fluid Data										
Stage/Plug #: 1										

Fluid #	Stage Type	Fluid Name	Qty	Qty UoM	Mixing Density lbm/gal	Yield ft3/sack	Mix Fluid Gal	Rate bbl/min	Total Mix Fluid Gal
1	FDP-C1337-18	SBM FDP-C1337-18 CEMENT SPACER SYS	50	bbl	12	3.15		4.5	
Fluid #	Stage Type	Fluid Name	Qty	Qty UoM	Mixing Density lbm/gal	Yield ft3/sack	Mix Fluid Gal	Rate bbl/min	Total Mix Fluid Gal
2	13.2# NeoCem	NeoCem TM	185.3	bbl	13.2	2.04		6.5	9.74
Fluid #	Stage Type	Fluid Name	Qty	Qty UoM	Mixing Density lbm/gal	Yield ft3/sack	Mix Fluid Gal	Rate bbl/min	Total Mix Fluid Gal
3	Displacement fluid		245	bbl	8.4			7	
Cement Left In Pipe		Amount	0 ft		Reason			WET SHOE	
Comment : ESTIMATED TOP OF SPACER @ 4050'. TOP OF CEMENT @ 5065'.									

2.0 Real-Time Job Summary

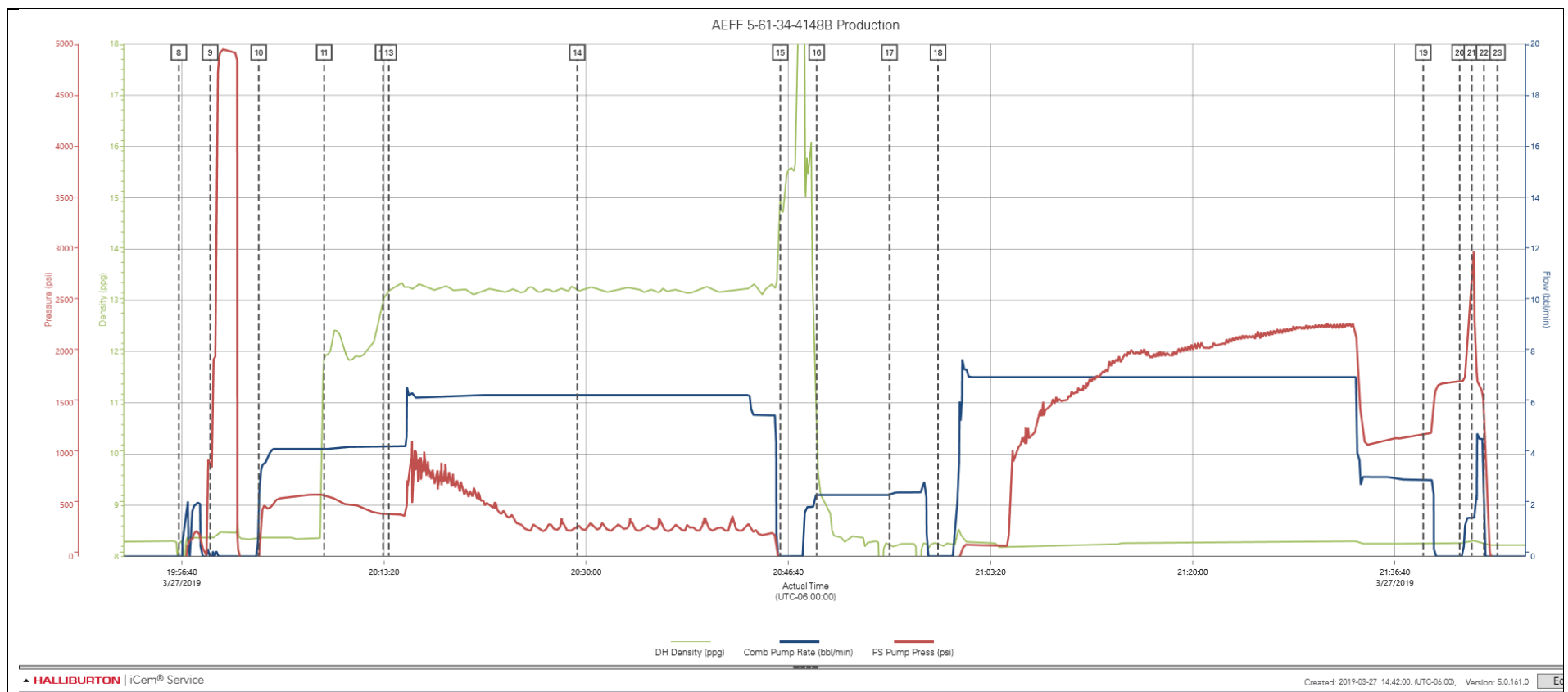
2.1 Job Event Log

Type	Seq. No.	Activity	Graph Label	Date	Time	Source	DH Density (ppg)	Comb Pump Rate (bbl/min)	PS Pump Press (psi)	Comments
Event	1	Call Out	Call Out	3/27/2019	14:00:00	USER				For Location ASAP
Event	2	Depart Yard Safety Meeting	Depart Yard Safety Meeting	3/27/2019	16:00:00	USER				Journey management meeting held prior to departure
Event	3	Depart from Service Center or Other Site	Depart from Service Center or Other Site	3/27/2019	16:15:00	USER				Called Journey
Event	4	Arrive at Location from Service Center	Arrive at Location from Service Center	3/27/2019	17:30:00	USER				64 MILES. Discussed numbers and job procedures with Customer. Casing is on bottom. Rig is circulating.
Event	5	Safety Meeting - Pre Rig-Up	Safety Meeting - Pre Rig-Up	3/27/2019	17:40:00	USER				JSA to discuss the hazards of rig-up
Event	6	Rig-Up Equipment	Rig-Up Equipment	3/27/2019	17:45:00	USER				Rig-up all surface lines and equipment.
Event	7	Pre-Job Safety Meeting	Pre-Job Safety Meeting	3/27/2019	19:20:00	USER	8.33	0.00	-75.00	With all essential personnel, to discuss the hazards of pumping the job, and pump schedule.
Event	8	Start Job	Start Job	3/27/2019	19:56:25	COM4	8.22	0.00	-78.00	
Event	9	Test Lines	Test Lines	3/27/2019	19:59:00	USER	8.38	0.00	895.00	Load line with 2 bbls of water. Test lines @ 4945 psi
Event	10	Pump Spacer 1	Pump Spacer 1	3/27/2019	20:03:00	USER	8.36	1.90	-70.00	PUMP 20 BBLS OF FRESH WATER AHEAD.
Event	11	Pump Spacer	Pump Spacer	3/27/2019	20:08:24	USER	11.86	4.20	594.00	BATCH/ WEIGHT/ PUMP 20 BBLS OF SPACER @ 12.0 PPG
Event	12	Pump Tail Cement	Pump PRIMARY CEMENT	3/27/2019	20:13:15	USER	13.00	4.30	424.00	BATCH/ WEIGHT/ PUMP 510 SKS (185.3 BBLS) OF NEOCEM @ 13.2 PPG.
Event	13	Check Weight	Check Weight	3/27/2019	20:13:44	COM4	13.18	4.30	423.00	
Event	14	Check Weight	Check Weight	3/27/2019	20:29:16	COM4	13.19	6.30	311.00	
Event	15	Shutdown	Shutdown	3/27/2019	20:46:00	USER	15.01	0.00	-47.00	Finished pumping cement.
Event	16	Clean Lines	Clean Lines	3/27/2019	20:49:00	USER	10.40	2.40	-36.00	WASH PUMPS AND LINES.

Event	17	Drop Top Plug	Drop Top Plug	3/27/2019	20:55:00	USER	8.22	2.40	-54.00	LOAD AND DROP PLUG
Event	18	Pump Displacement - Start	Pump Displacement - Start	3/27/2019	20:59:00	USER	8.25	0.00	-74.00	245.5 bbls fresh water. First 20 BBLs with MMCR. Next 100 with BE 3 , OXYGON, ANHIB II.
Event	19	Bump Plug	Bump Plug	3/27/2019	21:39:00	USER	8.26	3.00	1194.00	@500 psi over final circulating pressure of 1395 psi
Event	20	Pump Water	Pump Water	3/27/2019	21:42:00	USER	8.26	0.00	1708.00	PRESSURE UP / SHIFT WET SHOE SUB AND PUMP 2.5 BBL WET SHOE.
Event	21	Shutdown	Shutdown	3/27/2019	21:43:00	USER	8.30	1.50	2682.00	
Event	22	Check Floats	Check Floats	3/27/2019	21:44:00	USER	8.27	0.00	1363.00	Floats held. 0.5 bbls back
Event	23	End Job	End Job	3/27/2019	21:45:07	COM4	8.23	0.00	-68.00	
Event	24	Pre-Rig Down Safety Meeting	Pre-Rig Down Safety Meeting	3/27/2019	21:50:00	USER	8.22	0.00	-75.00	JSA to discuss the hazards of rig-down

3.0 Attachments

3.1 AEFF 5-61-24-4148B Production – Job Chart with Events



3.2 AEFF 5-61-24-4148B Production – Job Chart without Events

