

PHOTO: VIEW OF LOCATION STAKES

CAMERA ANGLE: NORTHERLY



PHOTO: VIEW OF LOCATION STAKES

CAMERA ANGLE: EASTERLY

REV: 2 03-01-19 C.IVIE (PAD CHANGES)

**BONANZA CREEK ENERGY
OPERATING COMPANY, LLC**

**NORTH PLATTE T-23 PAD
SE 1/4 SE 1/4, SECTION 23, T5N, R63W, 6th P.M.
WELD COUNTY, COLORADO**

TAKEN BY	C.M.	01-03-19	
DRAWN BY	M.F.D.	09-23-16	
LOCATION PHOTOS			PHOTO 1



UELS, LLC
Corporate Office * 85 South 200 East
Vernal, UT 84078 * (435) 789-1017



PHOTO: VIEW OF LOCATION STAKES

CAMERA ANGLE: SOUTHERLY

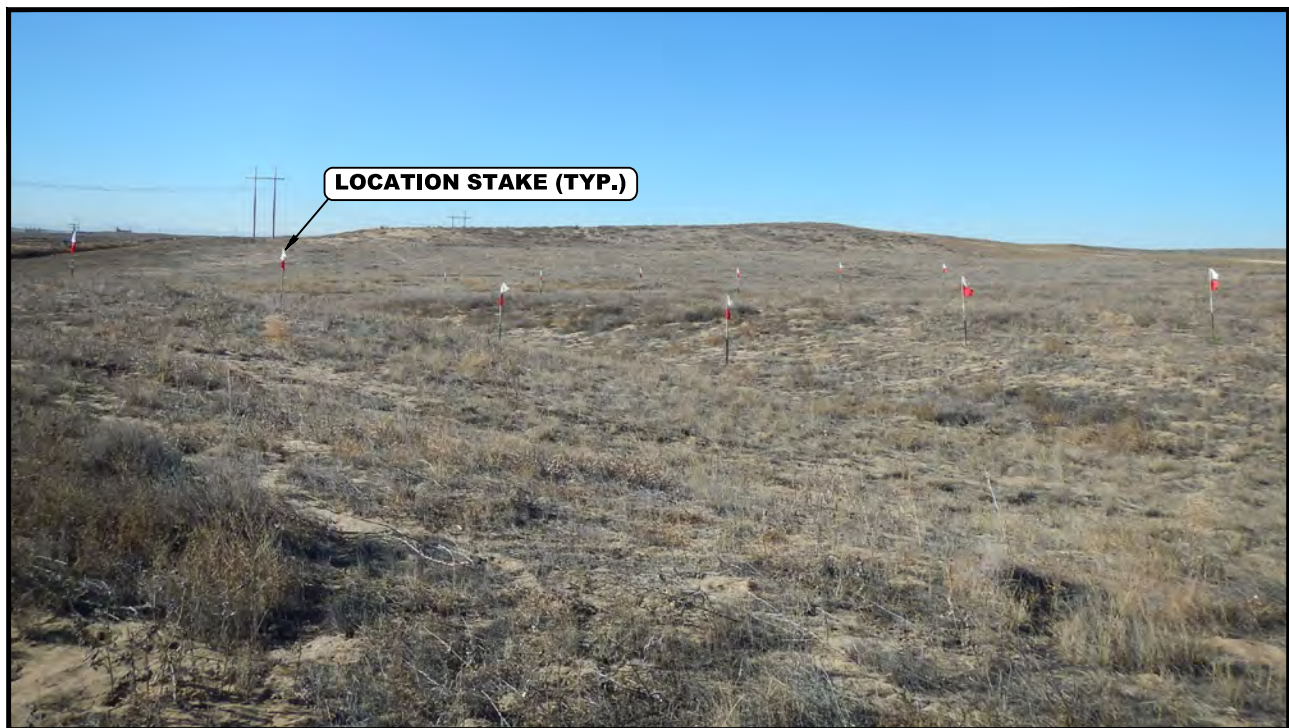


PHOTO: VIEW OF LOCATION STAKES

CAMERA ANGLE: WESTERLY

REV: 2 03-01-19 C.IVIE (PAD CHANGES)

**BONANZA CREEK ENERGY
OPERATING COMPANY, LLC**

**NORTH PLATTE T-23 PAD
SE 1/4 SE 1/4, SECTION 23, T5N, R63W, 6th P.M.
WELD COUNTY, COLORADO**

TAKEN BY	C.M.	01-03-19	
DRAWN BY	M.F.D.	09-23-16	
LOCATION PHOTOS			PHOTO 2



UELS, LLC
Corporate Office * 85 South 200 East
Vernal, UT 84078 * (435) 789-1017