

Brian T. Brinkman—On behalf of L&L40, Inc.
Colorado Licensed Professional Land Surveyor No. 38175
DATE: 3/13/2019
PROJECT#: 2018155-05

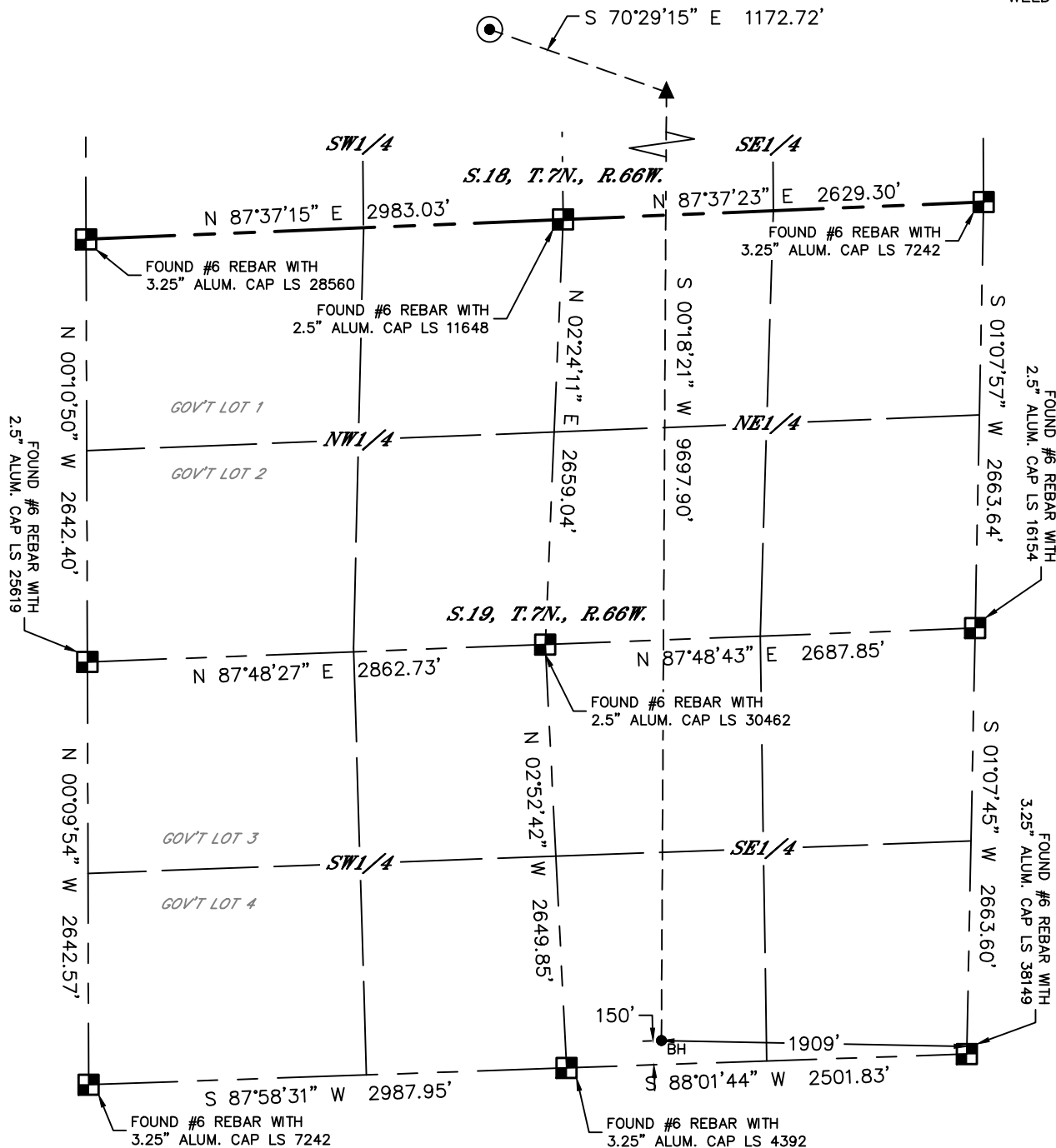


Lat40°, Inc. 6250 W. 10th Street, Unit 2, Greeley, CO 970-515-5294

WELL LOCATION CERTIFICATE

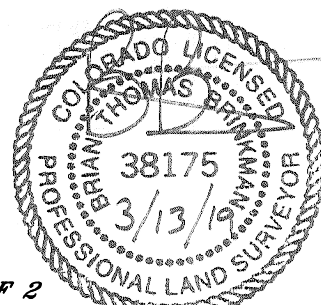
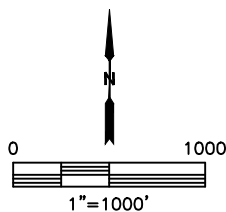
STOUT 11N

SECTION: 18
TOWNSHIP: 7N
RANGE: 66W
6TH. P.M.
WELD COUNTY, CO



LEGEND

- = ALIQUOT MONUMENT AS DESCRIBED
- = CALCULATED POSITION
- = SURFACE HOLE LOCATION (SHL)
- ▲ = ENTRY POINT LOCATION (EP)
- _{BH} = BOTTOM HOLE LOCATION (BHL)
- ⊙ = EXISTING WELL
- ⊙ = ABANDONED WELL



SHEET 2 OF 2

Brian T. Brinkman—On behalf of Lat40°, Inc.
Colorado Licensed Professional DATE: 3/13/2019
Land Surveyor No. 38175 PROJECT#: 2018155-05