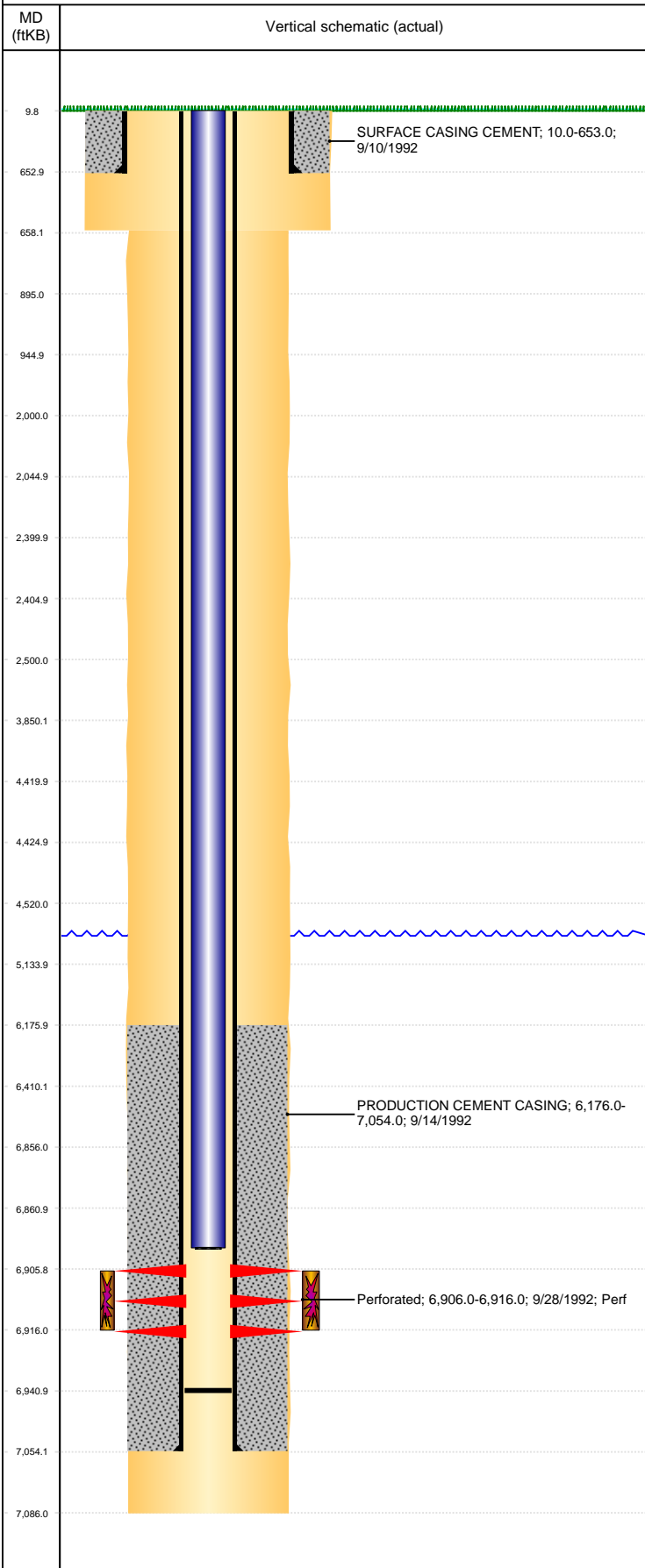


Well Name: SPIKE STATE D36-04

VERTICAL, ORIGINAL HOLE, 7/1/2019 3:54:01 PM



Well Header									
API 05-123-16129		Business Unit DJ BASIN			District 15		Well Config VERTICAL		
KB - GL / MSL (ft... 10.00		Spud Date 9/9/1992		P & A Date		Well Production Status SI			SoRT No
Comment									
Surface Location (Congressional)									
Qtr 3 NW	Qtr 4 NW	Section 36	Twnshp 3	Twnsh... N	Range 64	Rng E/... W	Actual Latitude (°) 40.18730090		Actual Longitude (°) -104.50685062
Wellbore Sections									
Section Des			Size (in)			Act Top, MD (ftKB)		Act Btm, MD (ftKB)	
SURFACE			12 1/4			10		658	
PRODUCTION			7 7/8			658		7,086	
Casing Strings									
Csg Des			Run Date		OD (in)	Wt/Len (lb/ft)	Grade	Top, MD (ftKB)	MD (ftKB)
Surface			9/10/1992		8 5/8	24.00		10.0	653.0
Production			9/10/1992		2 7/8	6.50	N-80	10.0	7,054.0
Cement									
Des					Start Date		Top (ftKB)		Btm (ftKB)
SURFACE CASING CEMENT					9/10/1992		10.0		653.0
PRODUCTION CEMENT CASING					9/14/1992		6,176.0		7,054.0
Zone Statuses									
Zone Name		Status Date	Status	Fluid Type	Job			Prod Method	
CODELL		4/1/2010	PR	Water				Flowing	
CODELL		5/9/2017	SI						
Perforation Data									
Linked Zone			Bnch/Stg	Entered Shot Total	Top (ftKB)		Btm (ftKB)		Date
CODELL, ORIGINAL HOLE				40	6,906.00		6,916.00		9/28/1992
Stimulation Intervals									
Zone				Start Date		Top (ftKB)		Btm (ftKB)	
CODELL, ORIGINAL HOLE				9/23/1992		6,906.0		6,916.0	
Other In Hole									
Run Date		Des				OD (in)	Top (ftKB)		Btm (ftKB)
12/8/2015		Plunger Lift				1.265			
Logs									
Date		Type				Top, MD (ftKB)		Btm, MD (ftKB)	
9/12/1992		Compensated Density				4,210.0		7,080.0	
9/12/1992		Induction				4,200.0		4,550.0	
9/21/1992		Cement Bond				6,060.0		7,024.0	
11/8/2017		GYRO				12.0		6,800.0	
Plug Back Total Depths									
Date		Type		Com				Depth (ftKB)	
9/14/1992		GUIDE SHOE						7,030.0	
4/8/2008		FILL		SLICKLINE TAGGED FILL & HAVE 25' OF RAT HOLE.				6,941.0	