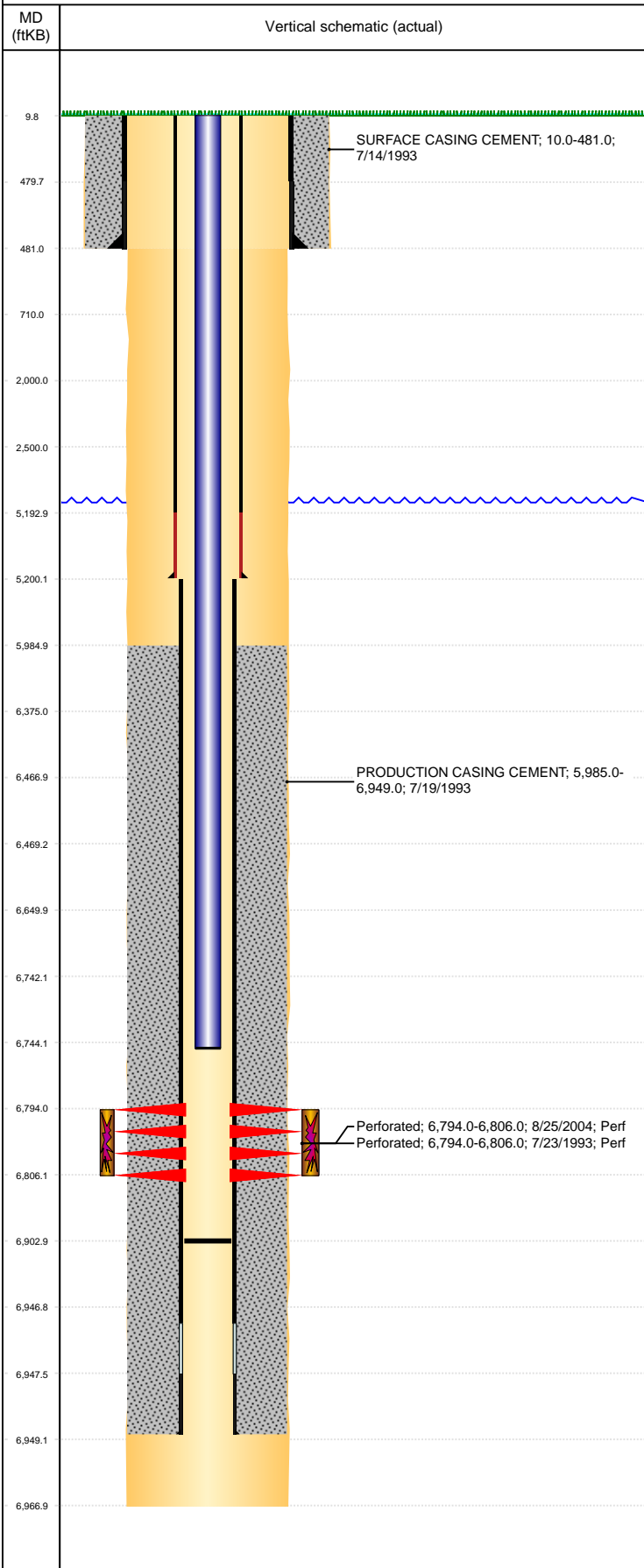


**Well Name: SPIKE STATE CC30-07**

VERTICAL, ORIGINAL HOLE, 6/25/2019 3:54:38 PM



Well Header									
API 05-123-15822		Business Unit DJ BASIN		District 15		Well Config VERTICAL			
KB - GL / MSL (ft... 10.00		Spud Date 7/14/1993		P & A Date		Well Production Status PR		SoRT No	
Comment csg patch @ 5200' 2/99, test to 1500#, 2 7/8 below patch, 3 1/2 above patch. ***NO INFO IN WELL FILE ON 3 1/2" CASING WEIGHT AND GRADE***									
Surface Location (Congressional)									
Qtr 3 SW	Qtr 4 NE	Section 30	Twnshp 4	Twnsh... N	Range 63	Rng E... W	Actual Latitude (°) 40.28515789	Actual Longitude (°) -104.47781523	
Wellbore Sections									
Section Des		Size (in)		Act Top, MD (ftKB)		Act Btm, MD (ftKB)			
SURFACE		12 1/4		10		481			
PRODUCTION		7 7/8		481		6,967			
Casing Strings									
Csg Des		Run Date		OD (in)	Wt/Len (lb/ft)	Grade	Top, MD (ftKB)	MD (ftKB)	
Surface		7/14/1993		8 5/8	24.00		10.0	481.0	
Production		1/27/1999		3 1/2			10.0	5,200.0	
Production		7/19/1993		2 7/8	6.50	N-80	10.0	6,949.0	
Cement									
Des		Start Date		Top (ftKB)		Btm (ftKB)			
SURFACE CASING CEMENT		7/14/1993		10.0		481.0			
PRODUCTION CASING CEMENT		7/19/1993		5,985.0		6,949.0			
Zone Statuses									
Zone Name		Status Date	Status	Fluid Type	Job			Prod Method	
CODELL		10/18/2004	PR		DRILLING/COMPLETION - ORIGINAL, 7/14/1993...			Flowing	
CODELL		8/10/2009	PR	Water				Flowing	
Perforation Data									
Linked Zone		Bnch/Stg	Entered Shot Total	Top (ftKB)	Btm (ftKB)	Date			
CODELL, ORIGINAL HOLE			48	6,794.00	6,806.00	8/25/2004			
CODELL, ORIGINAL HOLE			46	6,794.00	6,806.00	7/23/1993			
Stimulation Intervals									
Zone		Start Date		Top (ftKB)		Btm (ftKB)			
CODELL, ORIGINAL HOLE		7/26/1993		6,794.0		6,806.0			
CODELL, ORIGINAL HOLE		9/1/2004		6,794.0		6,806.0			
Other In Hole									
Run Date		Des		OD (in)	Top (ftKB)	Btm (ftKB)			
6/13/2018		Plunger Lift		1.27					
Logs									
Date		Type			Top, MD (ftKB)	Btm, MD (ftKB)			
7/19/1993		COMPENSATED DENSITY			3,750.0	7,158.6			
7/19/1993		INDUCTION			3,750.0	7,158.6			
7/22/1993		CEMENT BOND			5,900.0	6,874.0			
Plug Back Total Depths									
Date		Type	Com			Depth (ftKB)			
7/22/1993		FILL	DEPTH LOGGER ON CBL			6,881.0			
9/7/2004		FILL	TAG FILL @ 6903'			6,903.0			