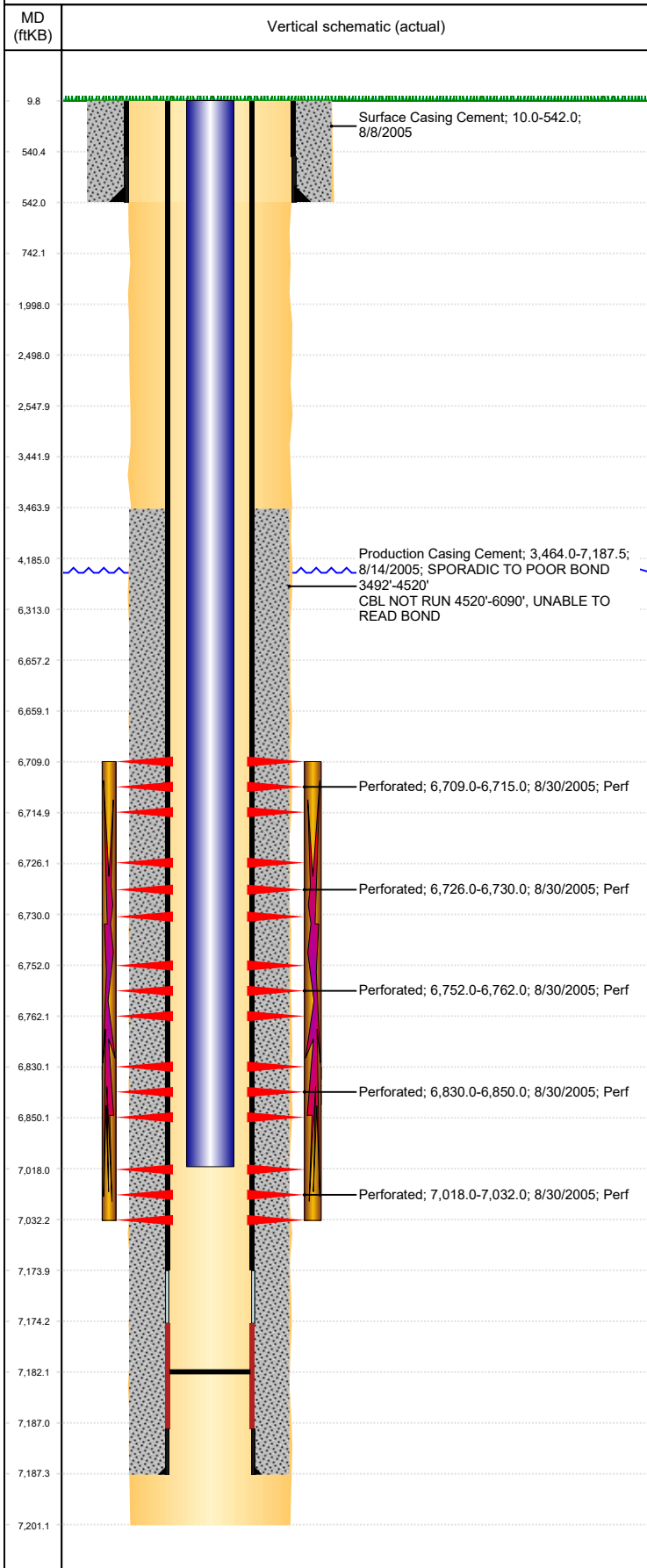


**Well Name: MILE HIGH SHEEP 08-33**

VERTICAL, ORIGINAL HOLE, 6/18/2019 5:29:38 PM



Well Header										
API 05-123-23128			Business Unit DJ BASIN			District 15		Well Config VERTICAL		
KB - GL / MSL (ft... 10.00		Spud Date 8/7/2005		P & A Date		Well Production Status PR			SoRT No	
Comment										
Surface Location (Congressional)										
Qtr 3 SW	Qtr 4 SW	Section 8	Twnshp 6	Twنش... N	Range 64	Rng E/... W	Actual Latitude (°) 40.49565300		Actual Longitude (°) -104.58152300	
Wellbore Sections										
Section Des			Size (in)			Act Top, MD (ftKB)		Act Btm, MD (ftKB)		
SURFACE			12 1/4			10		542		
PRODUCTION			7 7/8			542		7,201		
Casing Strings										
Csg Des			Run Date		OD (in)	Wt/Len (lb/ft)	Grade	Top, MD (ftKB)	MD (ftKB)	
Surface			8/8/2005		8 5/8	24.00		10.0	542.0	
Production			8/13/2005		4 1/2	11.60		10.0	7,187.5	
Cement										
Des					Start Date		Top (ftKB)		Btm (ftKB)	
Surface Casing Cement					8/8/2005		10.0		542.0	
Production Casing Cement					8/14/2005		3,464.0		7,187.5	
Zone Statuses										
Zone Name		Status Date	Status	Fluid Type	Job				Prod Method	
CODELL		7/8/2015	PR	Water	DRILLING/COMPLETION - ORIGINAL, 8/7/2005...				Flowing	
CODELL		3/29/2017	PR							
NIOBRARA		9/29/2005	PR							
NIOBRARA		6/2/2010	PR							
Perforation Data										
Linked Zone			Bnch/Stg	Entered Shot Total	Top (ftKB)		Btm (ftKB)		Date	
NIOBRARA, ORIGINAL HOLE			A	12	6,709.00		6,715.00		8/30/2005	
NIOBRARA, ORIGINAL HOLE			A	8	6,726.00		6,730.00		8/30/2005	
NIOBRARA, ORIGINAL HOLE			A	20	6,752.00		6,762.00		8/30/2005	
NIOBRARA, ORIGINAL HOLE			B	40	6,830.00		6,850.00		8/30/2005	
CODELL, ORIGINAL HOLE				56	7,018.00		7,032.00		8/30/2005	
Stimulation Intervals										
Zone				Start Date			Top (ftKB)		Btm (ftKB)	
NIOBRARA-CODELL, ORIGINAL HOLE				9/2/2005			6,709.0		7,032.0	
NIOBRARA, ORIGINAL HOLE				8/30/2005			6,830.0		6,850.0	
Other In Hole										
Run Date		Des				OD (in)	Top (ftKB)		Btm (ftKB)	
Logs										
Date		Type					Top, MD (ftKB)		Btm, MD (ftKB)	
8/13/2005		COMPENSATED DENSITY					3,000.0		7,185.0	
8/13/2005		INDUCTION					542.0		7,205.0	
8/29/2005		CBL/CCL/GR					3,300.0		7,167.0	
9/13/2018		GYRO					10.0		6,900.0	
Plug Back Total Depths										
Date		Type			Com				Depth (ftKB)	
8/29/2005		FILL			DEPTH LOGGER ON CBL				7,169.0	
1/23/2006		FILL			CLEAN OUT				7,182.0	