



00271720

Dresser Atlas

DRESSER

DUAL INDUCTION  
FOCUSED LOG

FILE NO.

API NO.

THANK YOU

Company UNIOIL  
Well NO.1 DIXON  
Field WILDCAT  
County LARIMER State COLO.

Location:

NE SE

Sec 27 Twp 3N Rge 6E

OTHER SERVICES

COL-CN-CR

PROLOG

PERMANENT DATUM G.L. ELEV. 5268  
LOGGING MEASURED FROM K.B. 10 FT. ABOVE P.D.  
DRILLING MEASURED FROM K.B.

ELEVATIONS

KB 5278  
OF  
GL 5268

DATE	10-17-83		
RUN	1		
SERVICE ORDER	99090		
DEPTH-DRILLER	6668		
DEPTH-LOGGER	6665		
BOTTOM LOGGED INTERVAL	6663		
TOP LOGGED INTERVAL	338		
CASING - DRILLER	8 5/8	8 339	
CASING - LOGGER	338		
BIT SIZE	7 7/8		
TYPE FLUID IN HOLE	CHEM GEL		
DENSITY AND VISCOSITY	9.8	56	
PH AND FLUID LOSS	9.5	4.0	
SOURCE OF SAMPLE	FLOWLINE		
RM AT MEAS. TEMP.	3.39	8 95	
RMF AT MEAS. TEMP.	2.51	8 90	
RMC AT MEAS. TEMP.	4.20	8 90	
SOURCE OF RMF / RMC	MEAS.	MEAS.	
RM AT BHT	2.81	8 165	
TIME SINCE CIRCULATION	3 HRS.		
MAX. REC. TEMP. DEG. F	165		
EQUIP. NO. / LOG.	6376	F.M.	
RECORDED BY	TOM CAUGHAN		
WITNESSED BY	MR. BURT		

FOLD HERE

BCA



03200

TOP SHANNON

3222

(+2056)

BASE SHANNON

3292

(+1986)

03300

BCA



5600  
TOP  
NIDBRARA

5640

1<sup>ST</sup> BENCH

5648

(-362)

(-370)

05700

2<sup>ND</sup> BENCH

5777

(-499)

05800

BCA



3<sup>rd</sup> BENCH

5876

(-598)

05900

FT HAYS

5990

(-712)

06000

CODELL

6010

(-732)

CARLILE

6032

(-754)

BCH

16



06500

J SILT

6511  
(-1233)

J SAND

6541  
(-1263)

DEEP INDUCTION

MEDIUM INDUCTION

SHALLOW FOCUSED

TENSION CURVE

06600

ACX

17



Dresser Atlas

DRESSER

COMPENSATED DENSILOG®

COMPENSATED NEUTRON

GAMMA RAY

FILE NO.

API NO.

THANK YOU

Company UNIOILWell NO. 1 DIXONField WILDCATCounty LARIMERState COLO.

Location:

NE SE

Sec 27 Twp 9N R9E 68W

OTHER SERVICES

DIFL

PROLOG

PERMANENT DATUM G.L.ELEV. 5268LOGGING MEASURED FROM K.B. 10 FT. ABOVE P.D.DRILLING MEASURED FROM K.B.

ELEVATIONS

KB 5278

IDF

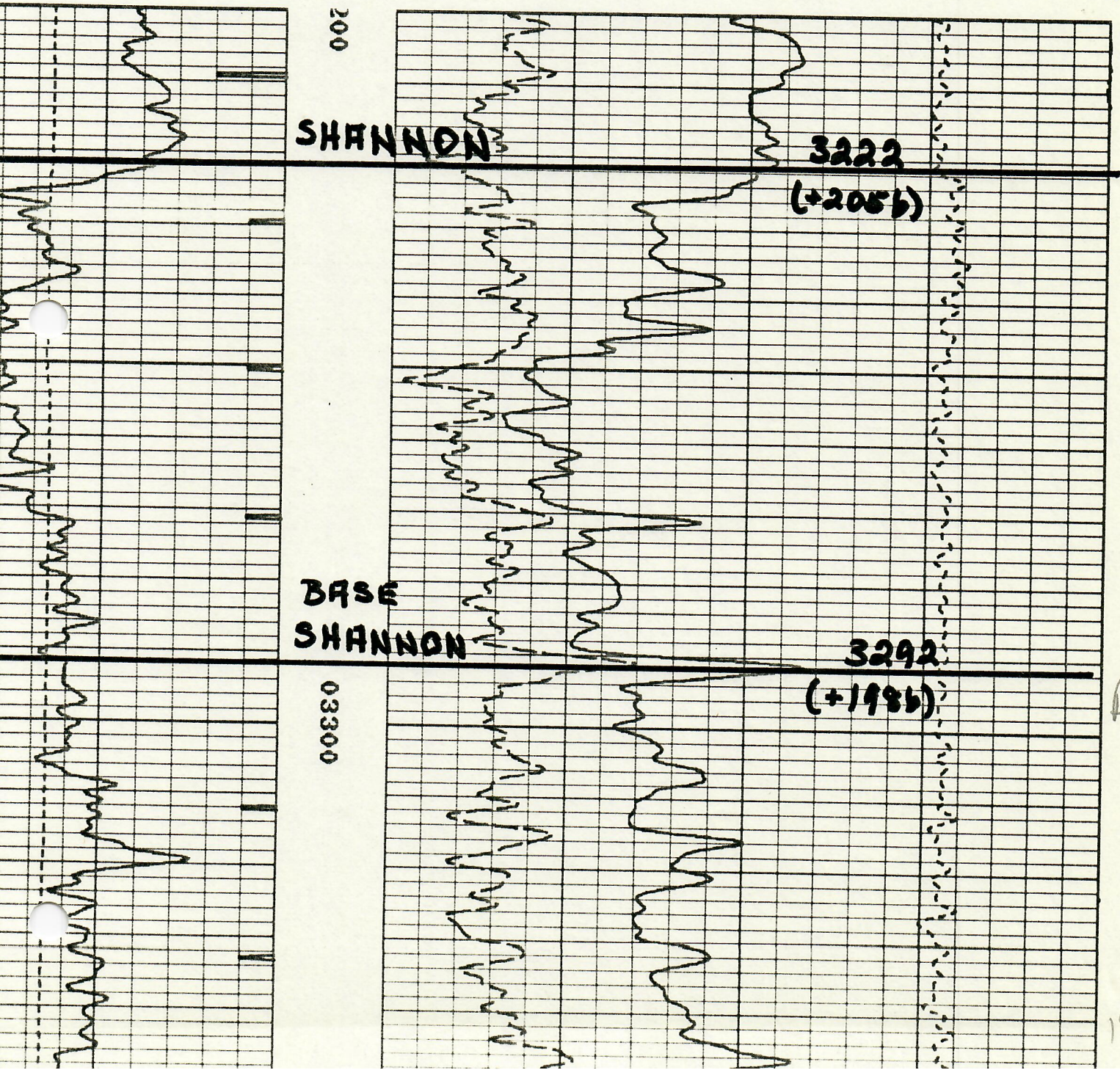
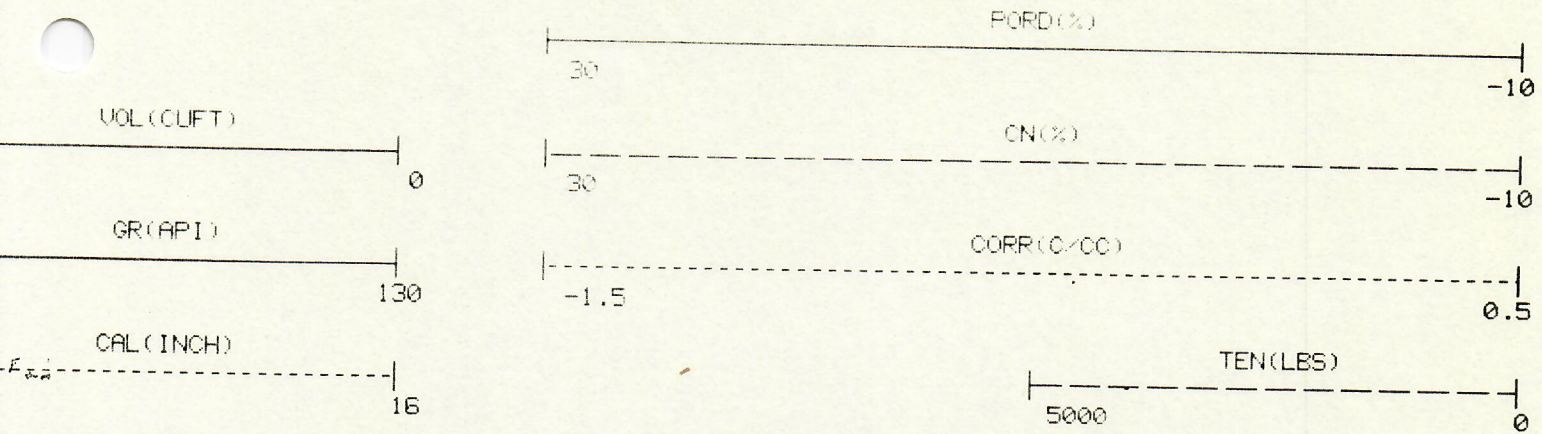
IDL 5268

DATE	10-17-83		
RUN	1		
SERVICE ORDER	99030		
DEPTH-DRILLER	6663		
DEPTH-LOGGER	6663		
BOTTOM LOGGED INTERVAL	6663		
TOP LOGGED INTERVAL	3203		
CASING - DRILLER	8 5/8	@ 339	
CASING - LOGGER	NOT LOGGED		
BIT SIZE	7 7/8		
TYPE FLUID IN HOLE	CHEM GEL		
DENSITY AND VISCOSITY	9.8	156	
PH AND FLUID LOSS	9.5	4.0	
SOURCE OF SAMPLE	FLOWLINE		
IRM AT MEAS. TEMP.	3.37	@ 95	
RMF AT MEAS. TEMP.	2.51	@ 90	
RMC AT MEAS. TEMP.	4.20	@ 90	
SOURCE OF RMF / RMC	MEAS.	MEAS.	
IRM AT BMT	2.01	@ 165	
TIME SINCE CIRCULATION	4.75 HRS.		
MAX. REC. TEMP. DEG. F	165		
EQUIP. NO. / LOC.	6375	12. M.	
RECORDED BY	TOM CAUGHAN		
WITNESSED BY	MR. BURT		

BCA

18





B3A



2<sup>nd</sup> BENCH

5177  
(-499)

05800

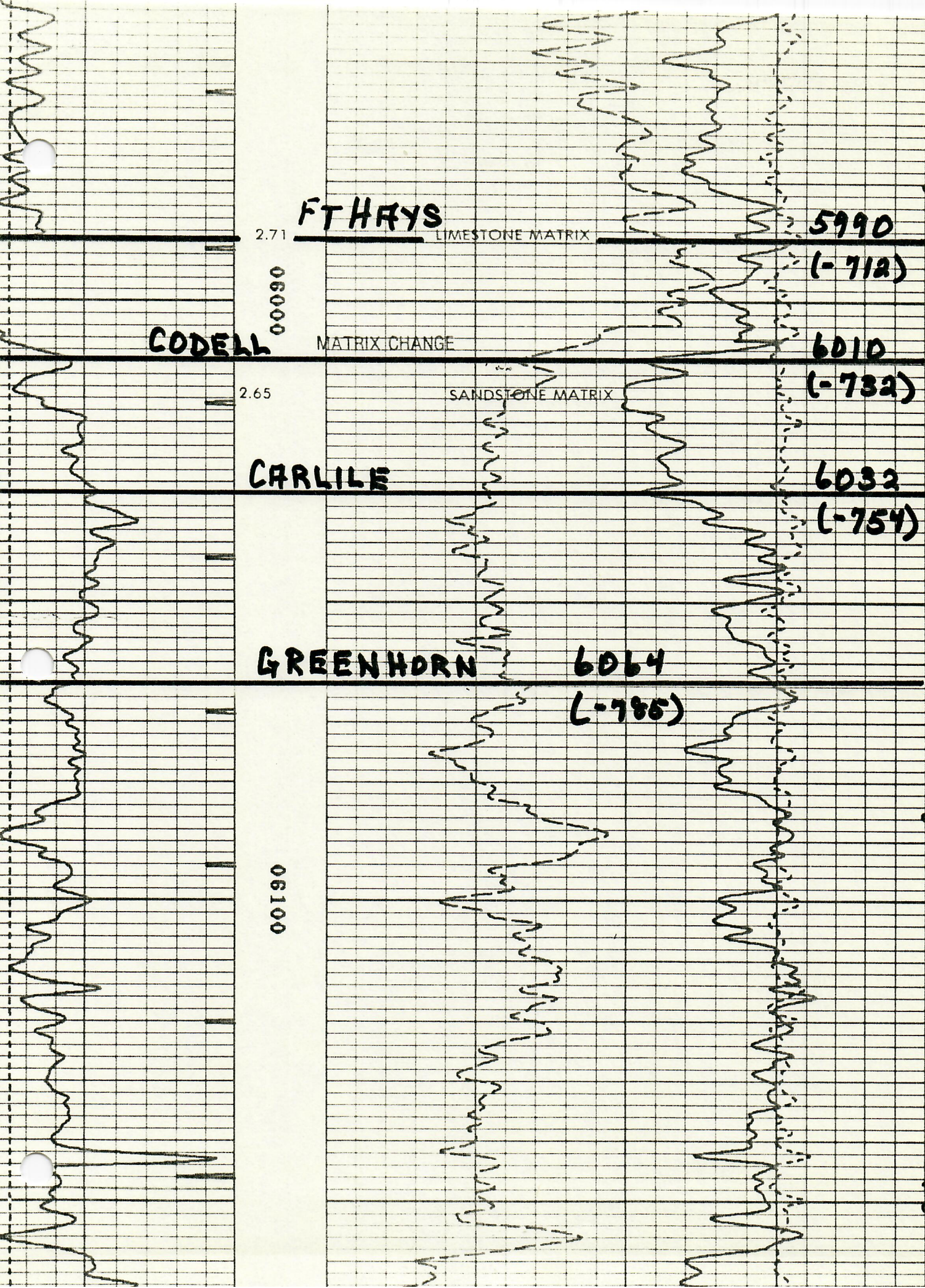
3<sup>rd</sup> BENCH

5876  
(-598)

05900

BCA





**FT HAYS**

2.71

LIMESTONE MATRIX

**5990**

**(-712)**

06000

**CODELL**

MATRIX CHANGE

**6010**

**(-732)**

2.65

SANDSTONE MATRIX

**CARLILE**

**6032**

**(-754)**

**GREENHORN**

**6064**

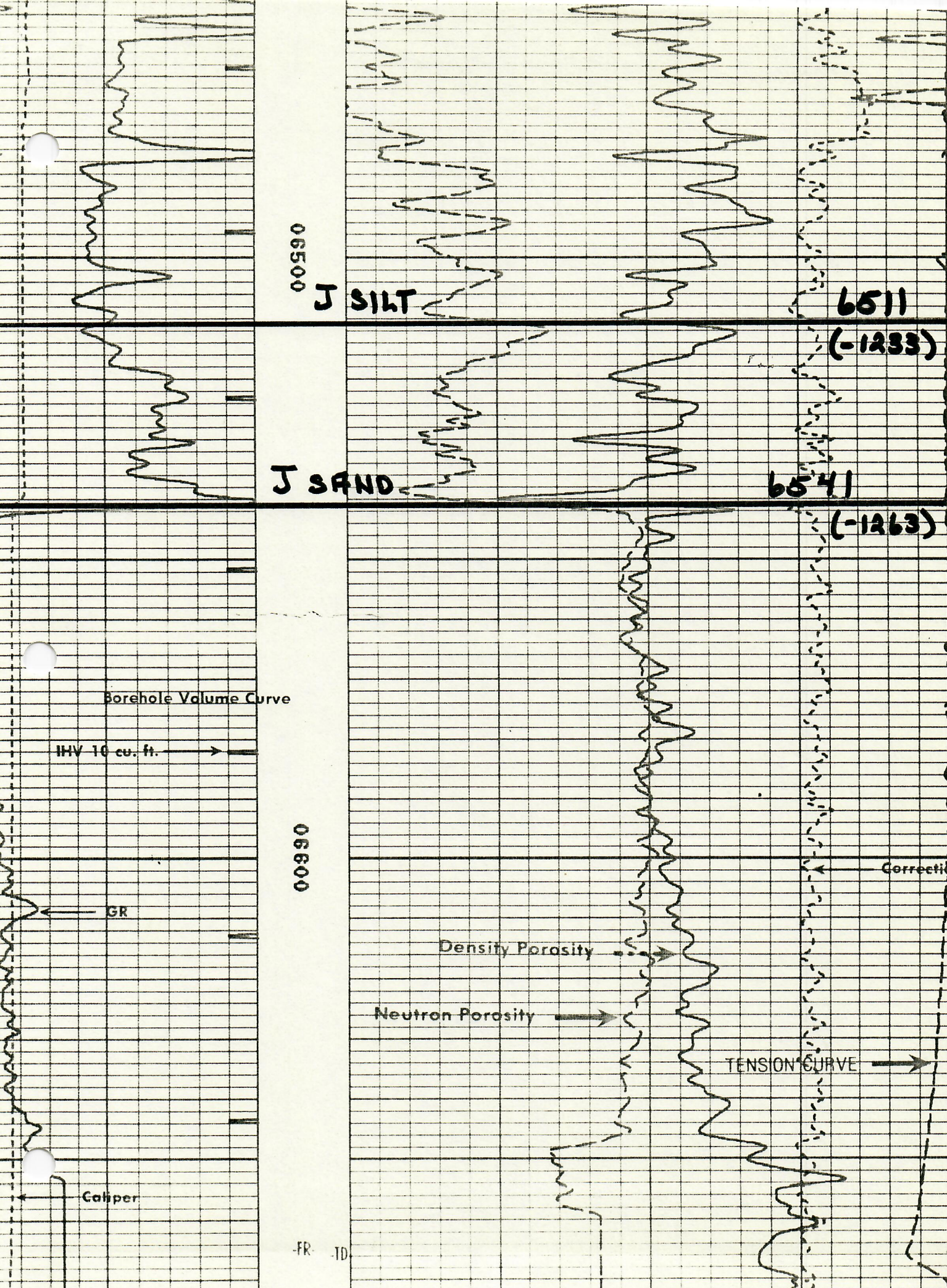
**(-785)**

06100

BCA

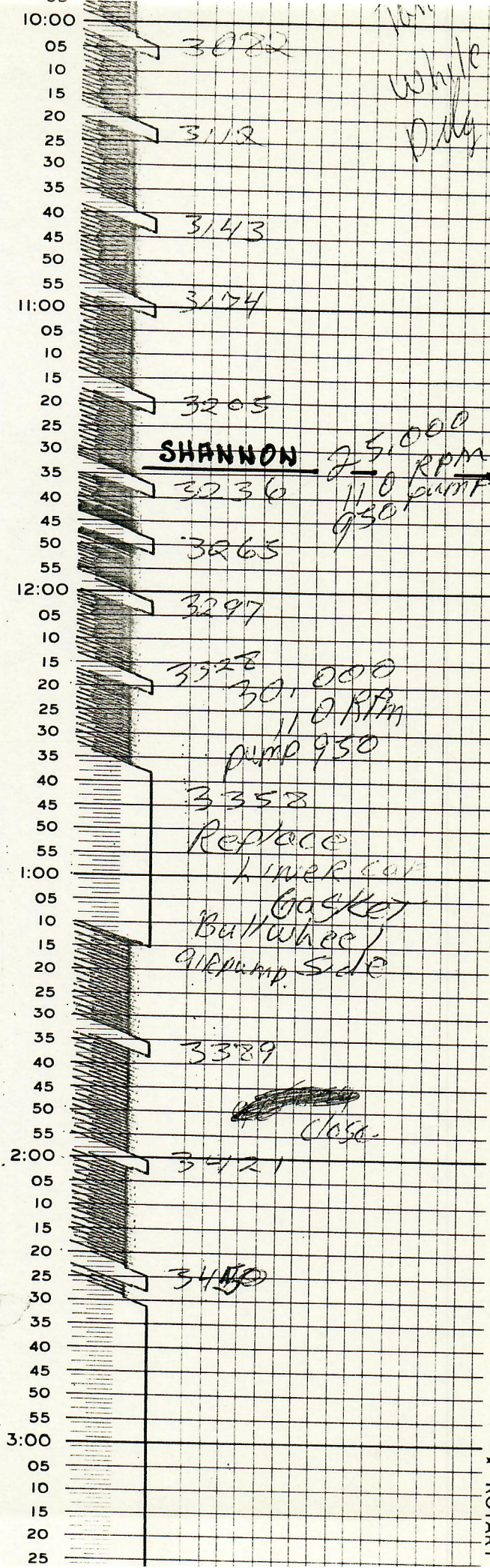
21







EVERYWHERE ALWAYS NEED A STAR RECORDER \*



BCA



STAR RECORDER

55  
11:00  
05  
10  
15  
20  
25  
30  
35  
40  
45  
50  
55  
12:00  
05  
10  
15  
20  
25  
30  
35  
40  
45  
50  
55  
1:00  
05  
10  
15  
20  
25  
30  
35  
40  
45  
50  
55  
2:00  
05  
10  
15  
20  
25  
30  
35  
40  
45  
50  
55  
3:00  
05  
10  
15  
20  
25  
30  
35  
40  
45  
50  
55  
4:00  
05  
10  
15  
20

5641  
KOD SERVICE  
REPAIR  
PUMP  
LOG TOP NIODRAB

5652 VIS 33

5702 VIS 33

5734 VIS 36  
WT 8.9  
HOPPER  
DOWN

5764

2nd VIS 35  
BENCH

5795

5826 VIS 35

5858 VIS 36  
WT 11.1  
HOPPER  
DOWN

ROTARY RIGS EVERYWHERE ALWAYS

BCA

24



55  
12:00  
05  
10  
15  
20  
25  
30  
35  
40  
45  
50  
55  
1:00  
05  
10  
15  
20  
25  
30  
35  
40  
45  
50  
55  
2:00  
05  
10  
15  
20  
25  
30  
35  
40  
45  
50  
55  
3:00  
05  
10  
15  
20  
25  
30  
35  
40  
45  
50  
55  
4:00  
05  
10  
15  
20  
25  
30  
35  
40  
45  
50  
55  
5:00  
05  
10  
15  
20

LOG TOP CODELL

6075

DRILL TO HANGER  
DRILL TO COLLAR  
PUMP 400-500

6075

AIR  
AIR COMPRESSOR

WIG-36  
WT. 9.0

SHING 90.000  
AIR 5.000  
AIR 1.000

close to

COKE

WIG-35  
WT. 1.0

BEST COPY  
AVAILABLE

\* ROTARY RIGS EVERYWHERE ALWAYS NEED A STAR RECORDER \*

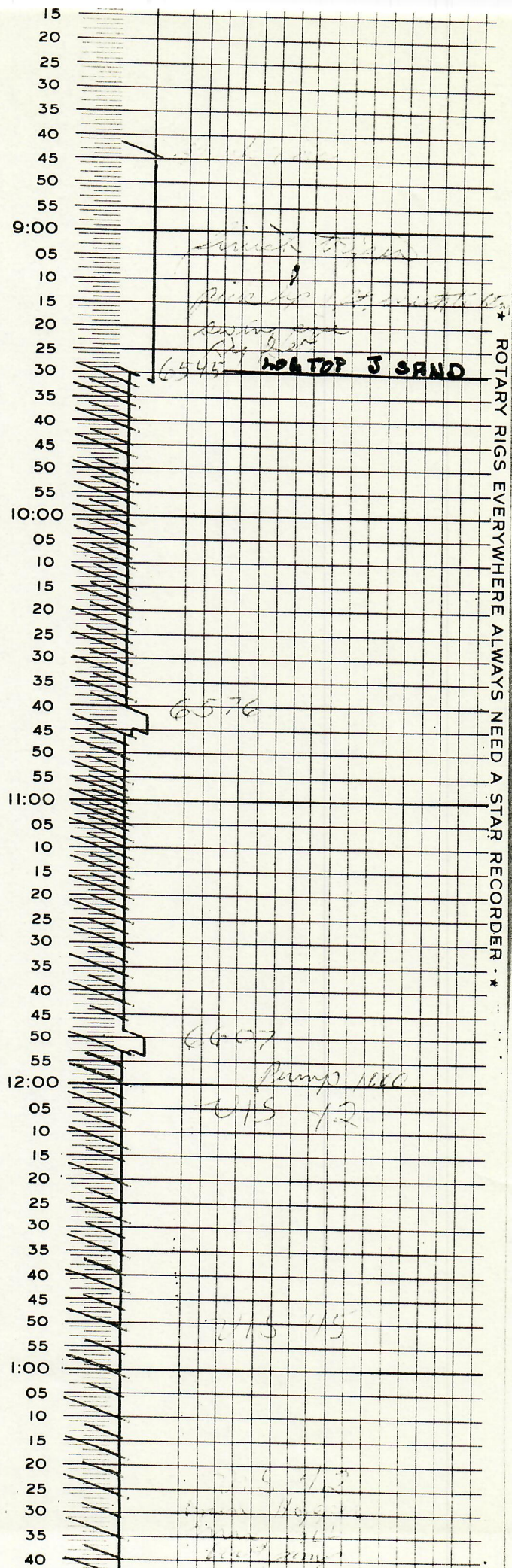
BCA

25









BCA