



00271750

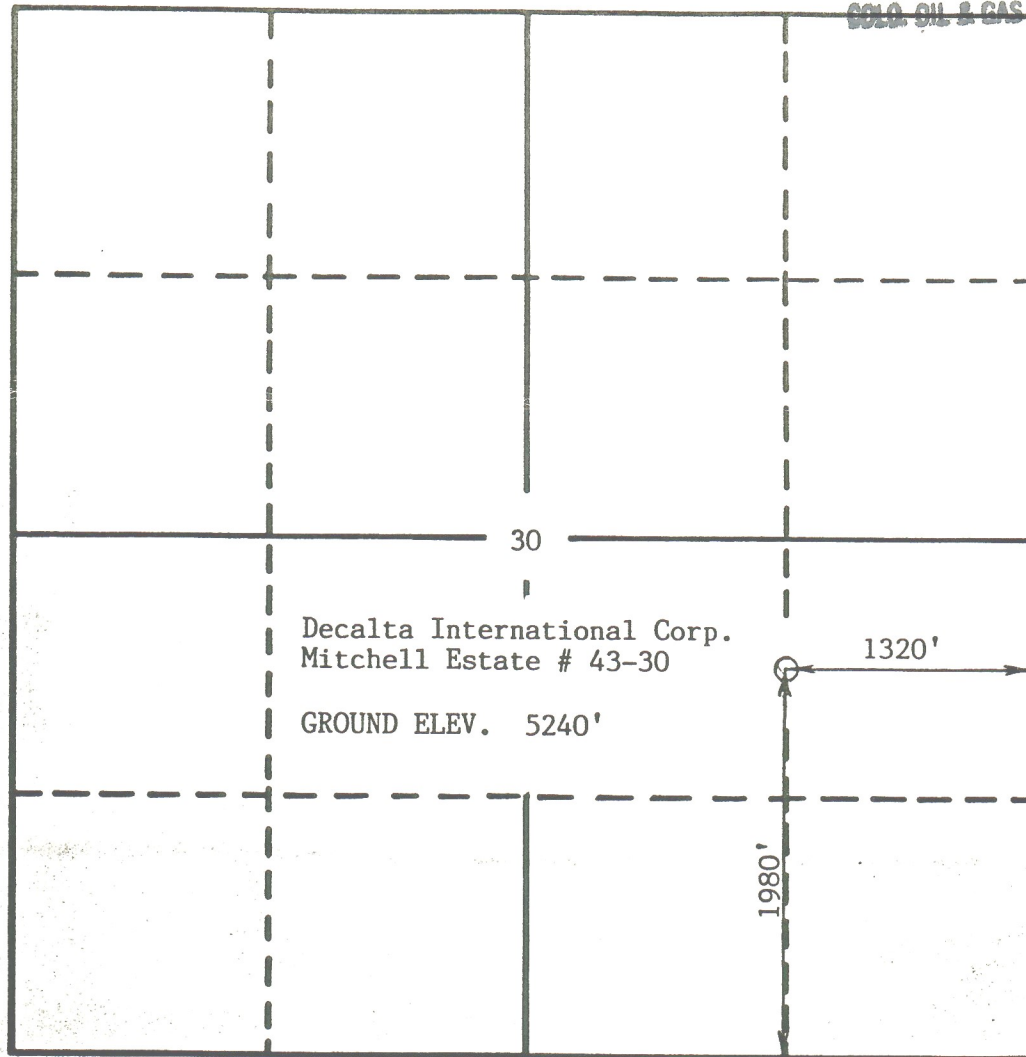
RECEIVED

DEC 11 1985

R 68 W

COLO. OIL & GAS CONS. COMM.

T 9 N



NORTH

1"=1000'

Flatirons Surveying, Inc., in accordance with a request from Decalta International Corp., has determined the location of the Mitchell Estates # 43-30 to be 1980' FSL and 1320' FEL, in the N 1/2 of the SE 1/4 of Section 30, T9 N, R 68 W, Sixth Principal Meridian, Larimer County, Colorado.

Surveyor's Certificate

I, John Hall, a R.L.S. in the State of Colorado, do hereby certify that this survey was made under my direct supervision and that this plat represents said survey.

84-2509

Oct. 29, 1984



FLATIRONS SURVEYING
1800 30TH ST., STE. 219
BOULDER, CO 80301
(303) 443-7001