

SCALE: 1" = 6000'
0' 3000' 6000'

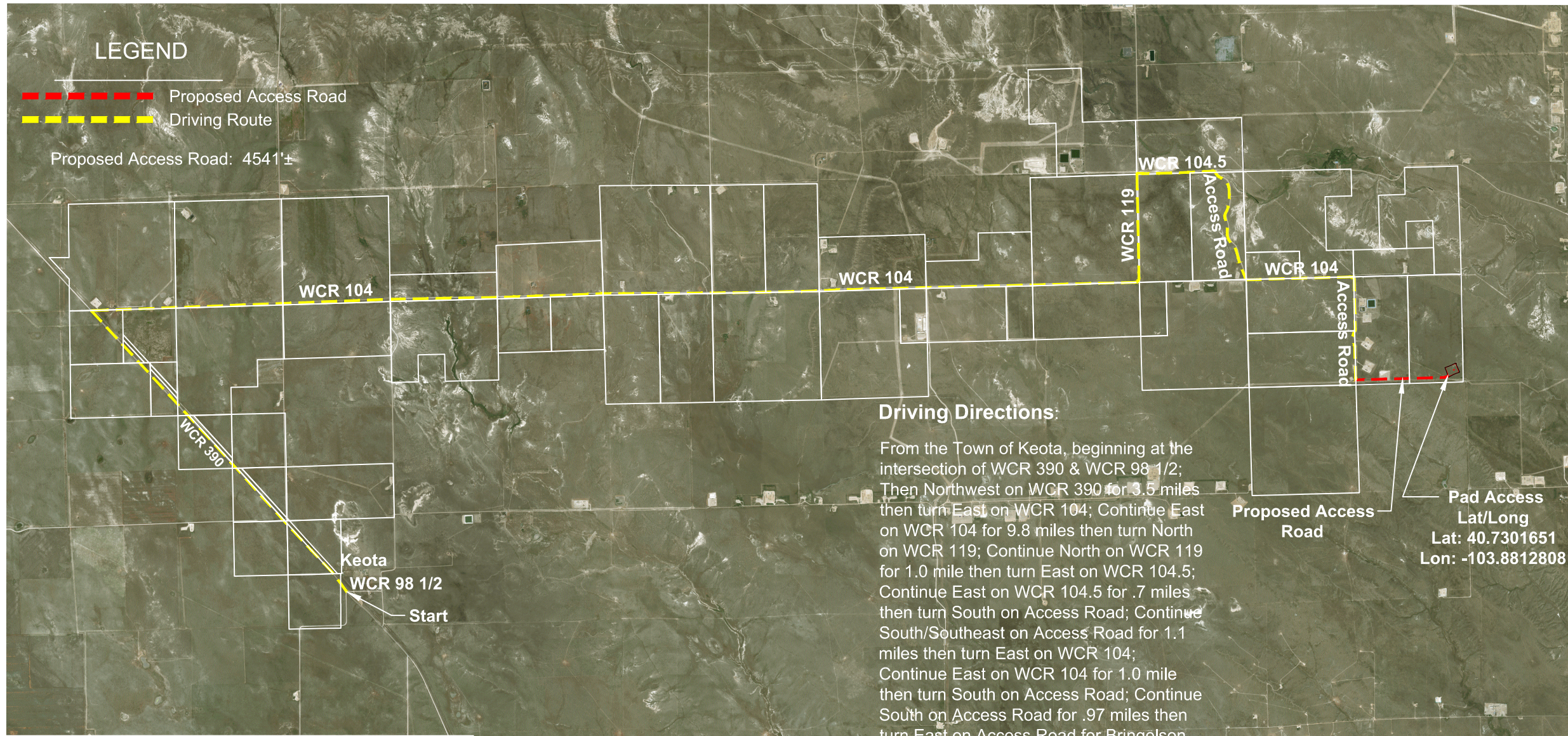
ACCESS ROAD MAP
SE 1/4 SE 1/4 SECTION 20
T9N R58W 6TH PM
WELD COUNTY, COLORADO



LEGEND

- Proposed Access Road
- Driving Route

Proposed Access Road: 4541'±



Driving Directions:

From the Town of Keota, beginning at the intersection of WCR 390 & WCR 98 1/2; Then Northwest on WCR 390 for 3.5 miles then turn East on WCR 104; Continue East on WCR 104 for 9.8 miles then turn North on WCR 119; Continue North on WCR 119 for 1.0 mile then turn East on WCR 104.5; Continue East on WCR 104.5 for .7 miles then turn South on Access Road; Continue South/Southeast on Access Road for 1.1 miles then turn East on WCR 104; Continue East on WCR 104 for 1.0 mile then turn South on Access Road; Continue South on Access Road for .97 miles then turn East on Access Road for Bringelson 2021 & 2029 Pad; Continue on Access Road for 4541 Feet or .86 miles to Bringelson 2021 & 2029 Pad

Proposed Access Road

Pad Access
Lat/Long
Lat: 40.7301651
Lon: -103.8812808

VERDAD RESOURCES BRINGELSON FED 2021 & 2029 JOB NO. 117568 & 117832	June 4, 2019	REVISION:	
	1 OF 1	INT	DATE
	F2A_BRINGELSON_2021_2029_ACCESS_DRAWING		

NOTE:
ALL PRODUCTION FACILITIES WILL BE ON PAD

