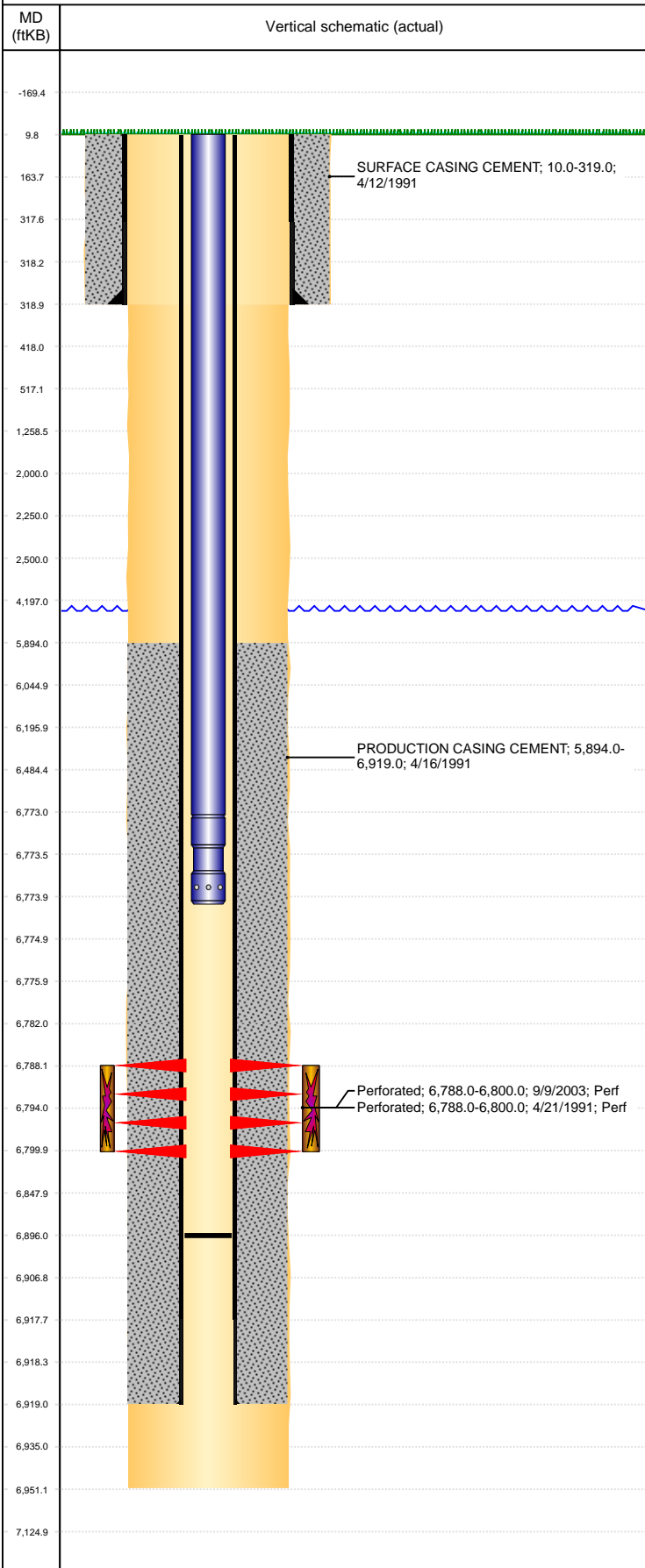


Well Name: PATRIOT B16-15

VERTICAL, ORIGINAL HOLE, 6/27/2019 12:04:59 PM



Well Header									
API 05-123-14930		Business Unit DJ BASIN		District 15		Well Config VERTICAL			
KB - GL / MSL (ft... 10.00		Spud Date 4/12/1991		P & A Date		Well Production Status PR		SoRT No	
Comment st lse 81-6052									
Surface Location (Congressional)									
Qtr 3 SW	Qtr 4 SE	Section 16	Twncshp 5	Twncsh... N	Range 64	Rng E... W	Actual Latitude (°) 40.39336999	Actual Longitude (°) -104.55249192	
Wellbore Sections									
Section Des		Size (in)		Act Top, MD (ftKB)		Act Btm, MD (ftKB)			
SURFACE		12 1/4		10		319			
PRODUCTION		7 7/8		319		6,951			
Casing Strings									
Csg Des		Run Date		OD (in)		Wt/Len (lb/ft)		Grade	
Surface		4/12/1991		8 5/8		24.00		N-80	
Production		4/16/1991		2 7/8		6.50		N-80	
								Top, MD (ftKB)	
								MD (ftKB)	
								10.0	
								10.0	
								6,919.0	
Cement									
Des		Start Date		Top (ftKB)		Btm (ftKB)			
SURFACE CASING CEMENT		4/12/1991		10.0		319.0			
PRODUCTION CASING CEMENT		4/16/1991		5,894.0		6,919.0			
Zone Statuses									
Zone Name		Status Date		Status		Fluid Type		Job	
CODELL		1/29/2010		PR		Water		HORIZONTAL WELL PREP, 1/13/2017 06:00	
CODELL		4/1/2017		PR		Gas		Flowing	
Perforation Data									
Linked Zone		Bnch/Stg		Entered Shot Total		Top (ftKB)		Btm (ftKB)	
CODELL, ORIGINAL HOLE				48		6,788.00		6,800.00	
CODELL, ORIGINAL HOLE				20		6,788.00		6,800.00	
Stimulation Intervals									
Zone		Start Date		Top (ftKB)		Btm (ftKB)			
CODELL, ORIGINAL HOLE		4/23/1991		6,788.0		6,800.0			
CODELL, ORIGINAL HOLE		9/22/2003		6,788.0		6,800.0			
Other In Hole									
Run Date		Des		OD (in)		Top (ftKB)		Btm (ftKB)	
Logs									
Date		Type				Top, MD (ftKB)		Btm, MD (ftKB)	
4/16/1991		COMPENSATED DENSITY				4,000.0		6,933.0	
4/16/1991		INDUCTION				4,000.0		4,800.0	
4/22/1991		CEMENT BOND				5,800.0		6,858.0	
12/29/2010		GYRO				10.0		6,800.0	
Plug Back Total Depths									
Date		Type		Com				Depth (ftKB)	
4/16/1991		GUIDE SHOE						6,863.0	
2/12/2010		FILL						6,896.0	