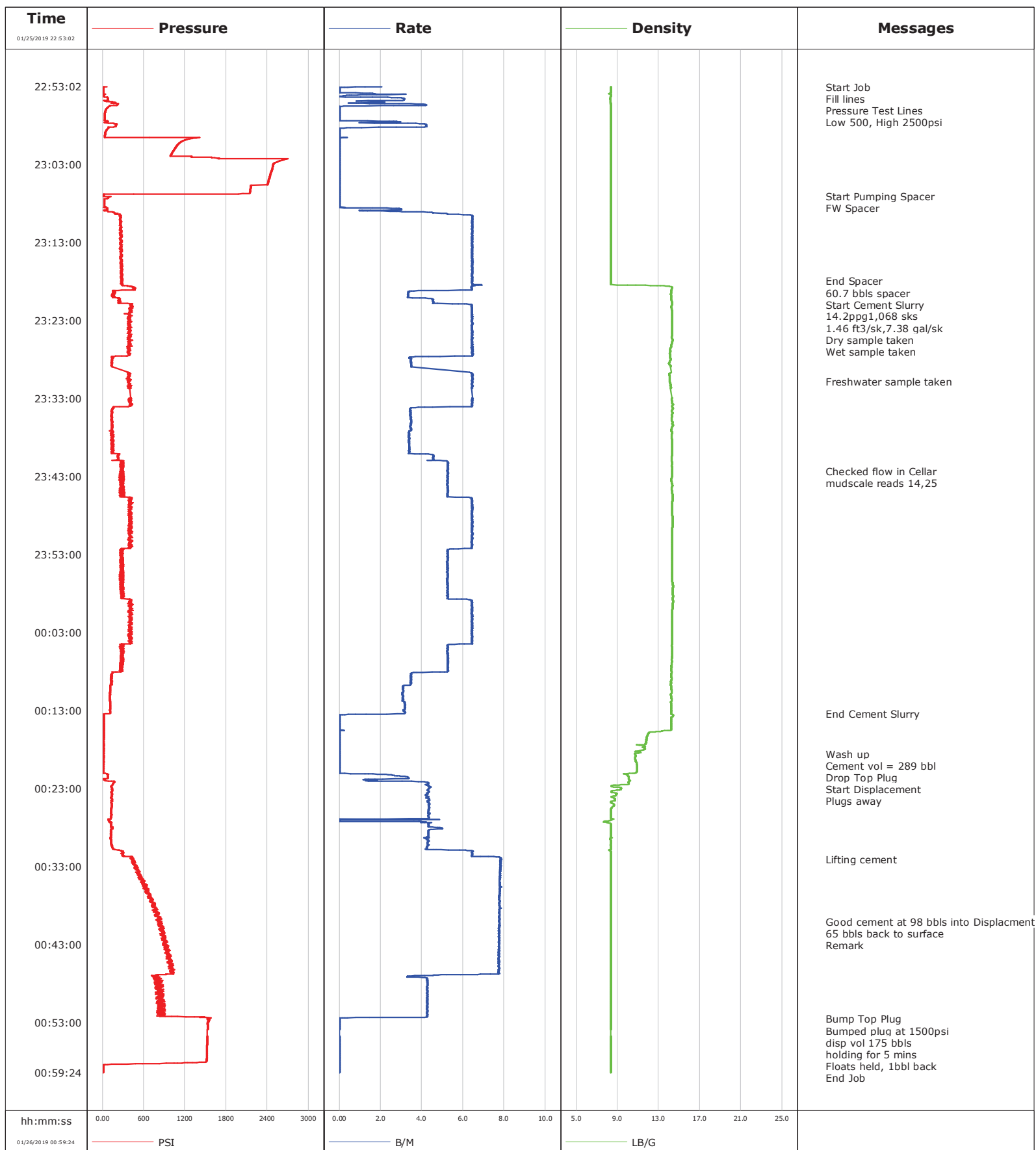


Well Echeverria 2k-2H-D267
Field Wildcat
Engineer Michael Navoy / Andrew Black
Country United States

Client Crestone Peak
SIR No. 2893550
Job Type 9 5/8 Surface Casing
Job Date 01-25-2019



Page 1 of 2

Well			Field		Job Start	Customer		Job Number
Echeverria 2k-2H-D267			Wildcat		Jan/25/2019	Crestone Peak		2893550
Date	Time 24-hr clock	Treating Pressure PSI	Flow Rate B/M	Density LB/G	Volume BBL	Message		
01/26/2019	00:21:10	79	2.2	9.94	357.1	Plugs away		
01/26/2019	00:32:04	423	7.8	8.36	404.6	Lifting cement		
01/26/2019	00:40:06	861	7.8	8.36	467.1	Good cement at 98 bbls into Displacement		
01/26/2019	00:40:07	857	7.8	8.36	467.2	65 bbls back to surface		
01/26/2019	00:40:26	843	7.8	8.36	469.7	Remark		
01/26/2019	00:52:33	1558	0.0	8.36	542.5	Bump Top Plug		
01/26/2019	00:52:37	1544	0.0	8.36	542.5	Bumped plug at 1500psi		
01/26/2019	00:53:25	1532	0.0	8.36	542.5	disp vol 175 bbls		
01/26/2019	00:53:26	1531	0.0	8.36	542.5	holding for 5 mins		
01/26/2019	00:55:23	1525	0.0	8.36	542.5	Floats held, 1bbl back		

Post Job Summary

Average Pump Rates, bbl/min					Volume of Fluid Injected, bbl							
Slurry 5.5	N2	Mud	Maximum Rate 7.8	Total Slurry 185.5	Mud 0.0	Spacer 60.7	N2					
Treating Pressure Summary, psi					Breakdown Fluid							
Maximum 2701	Final 8	Average 470	Bump Plug to 1500	Breakdown	Type FreshWater	Volume 175.0 bbl	Density 8.34 lb/gal					
Avg. N2 Percent %	Designed Slurry Volume 0.0 bbl	Displacement 175.5 bbl	Mix Water Temp degF	Cement Circulated to Surface? <input type="checkbox"/>		Volume bbl						
				Washed Thru Perfs <input type="checkbox"/>		To ft						
Customer or Authorized Representative Company Man			Schlumberger Supervisor Michael Navoy / Andrew Black			Circulation Lost <input type="checkbox"/>	Job Completed <input type="checkbox"/>					
						-	-					