



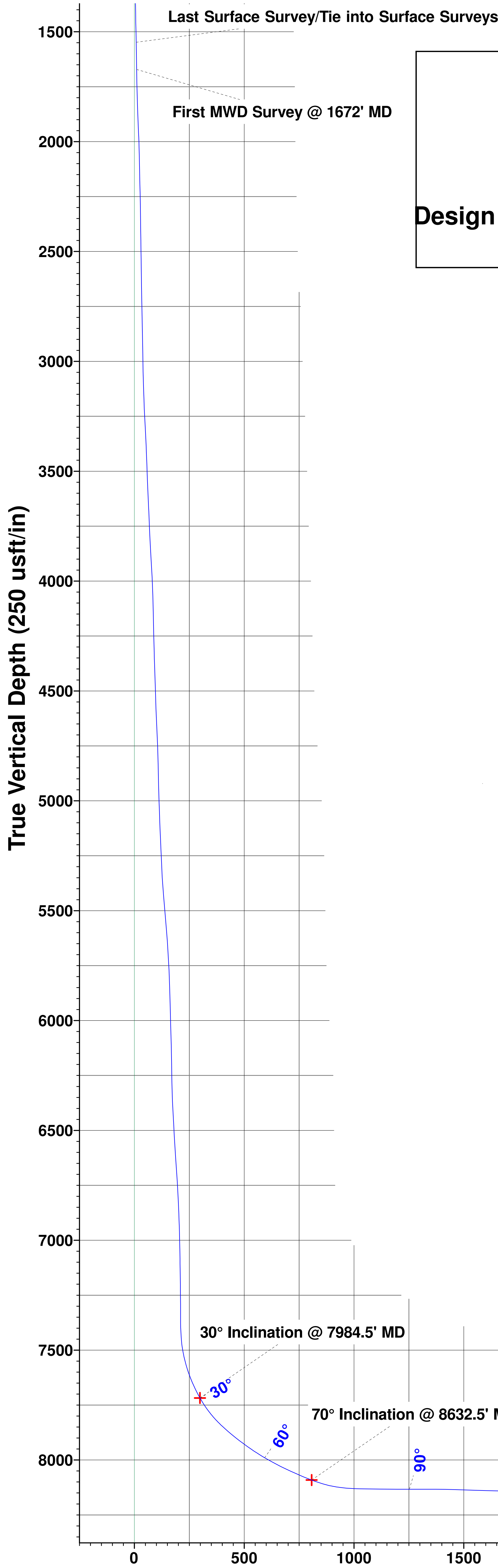
PROJECT DETAILS: Weld County, CO (NAD83)
Geodetic System: US State Plane 1983
Datum: North American Datum 1983
Ellipsoid: GRS 1980
Zone: Colorado Northern Zone
System Datum: Ground Level
Local North: True

WELL DETAILS: Coyote Trails 33W-15-2C

Ground Elevation:: 5273.00
RKB Elevation: KB @ 5301.00usft (Ensign 147)
Rig Name: Ensign 147

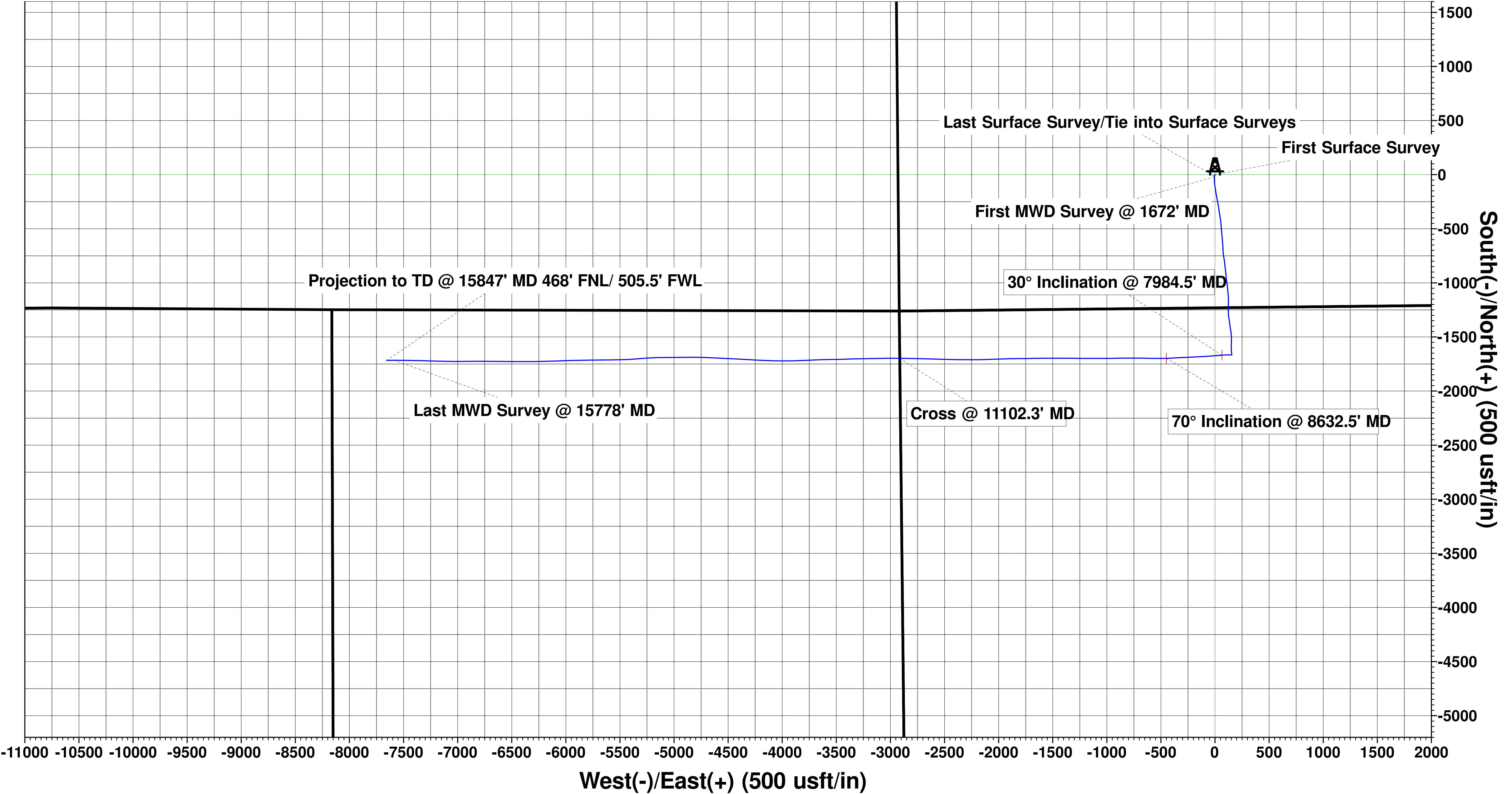


Northing	Easting	Latitude	Longitude
1249858.63	3137882.94	40.018198	-105.007697



Extraction Oil & Gas
Project: Weld County, CO (NAD83)
Site: Sec 28-T1N-R68W Coyote Trails
Well: Coyote Trails 33W-15-2C
Wellbore: Wellbore #1
Design: Wellbore #1 (Coyote Trails 33W-15-2C/Wellbore #1)
Ensign 147

ANNOTATIONS									
MD	Inc	Azi	TVD	+N/-S	+E/-W	Vsect	Departure	Annotation	
114.00	0.97	91.59	113.99	-0.03	0.96	-0.94	0.96	First Surface Survey	
1548.00	3.40	185.24	1547.79	-13.10	-5.48	8.19	20.13	Last Surface Survey/Tie into Surface Surveys	
1672.00	3.76	181.57	1671.55	-20.83	-5.92	10.30	27.87	First MWD Survey @ 1672' MD	
7984.50	30.00	264.84	7717.91	-1668.01	64.67	298.70	1777.47	30° Inclination @ 7984.5' MD	
8632.50	69.99	268.06	8091.33	-1697.23	-449.71	807.17	2291.96	70° Inclination @ 8632.5' MD	
11102.30	87.01	270.68	8148.74	-1696.89	-2913.98	3212.68	4756.32	Cross @ 11102.3' MD	
15778.00	91.52	269.88	8161.91	-1715.89	-7586.56	7778.13	9431.07	Last MWD Survey @ 15778' MD	
15847.00	91.52	269.88	8160.08	-1716.03	-7655.54	7845.50	9500.05	Projection to TD @ 15847' MD 468' FNL/ 505.5' FWL	



Vertical Section at 257.47° (250 usft/in)

T

↑

↗

⊙

Mazimuths to True North

Magnetic North: 8.12°

Magnetic Field

Strength: 51923.5nT

Dip Angle: 66.47°

Date: 3/22/2019

Model: IGRF2015