



Lat40°, Inc. 6250 W. 10th Street, Unit 2, Greeley, CO 970-515-5294

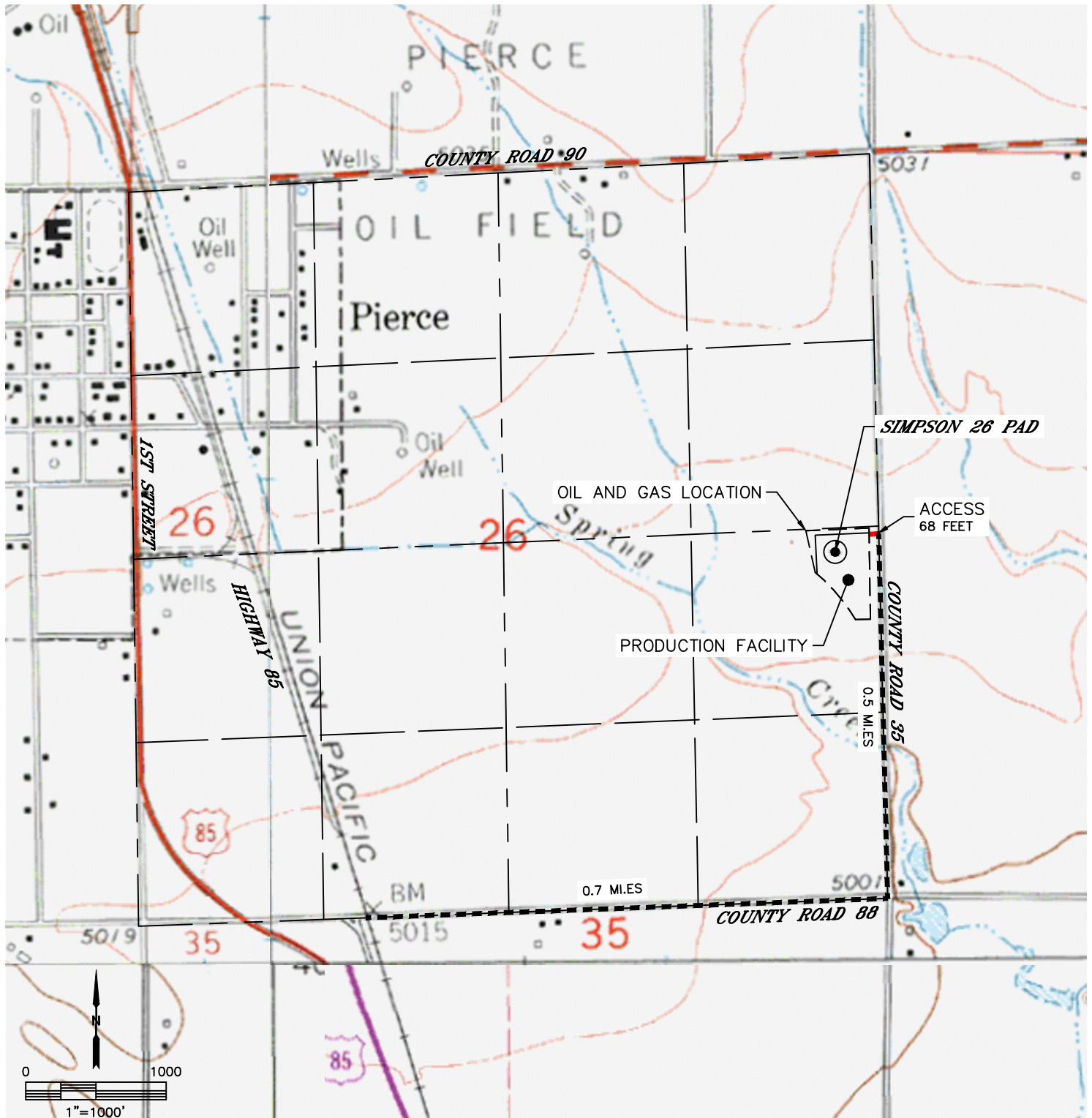
ACCESS ROAD MAP

SIMPSON 26 PAD

SECTION: 26
TOWNSHIP: 8N
RANGE: 66W
6TH. P.M.
WELD COUNTY, CO

DRIVING DIRECTIONS TO SIMPSON 26 PAD

FROM THE INTERSECTION OF HIGHWAY 85 AND COUNTY ROAD 88, DRIVE EAST ON COUNTY ROAD 88 FOR 0.7 MILES. TURN NORTH ON COUNTY ROAD 35 AND DRIVE FOR 0.5 MILES, TURN WEST ONTO PROPOSED ACCESS AND DRIVE 68' TO THE PROPOSED LOCATION.





Lat40°, Inc. 6250 W. 10th Street, Unit 2, Greeley, CO 970-515-5294

ACCESS ROAD MAP

SIMPSON 26 PAD

SECTION: 26
TOWNSHIP: 8N
RANGE: 66W
6TH. P.M.
WELD COUNTY, CO

