



# Kerr-McGee Oil & Gas Onshore LP

A subsidiary of Anadarko Petroleum Corporation

1099 18<sup>th</sup> Street  
Denver, CO 80202  
720-929-6000

June 10, 2019

Jeff Robbins  
Director, Colorado Oil and Gas Conservation Commission  
Department of Natural Resources  
The Chancery Building  
1120 Lincoln Street, Suite 801  
Denver, CO 80203

**Re: 30 Day Certification Letter - 318A.e**

CLELAND 15-1HZ (Doc No. 402011001)

Township 1 North, Range 68 West

Section 15: NESW

Unit Acreage: 800 Acres

Proposed Spacing Unit:

01N68W SEC 15: SWSW;

01N68W SEC 16: SESE;

01N68W SEC 21: E2E2;

01N68W SEC 22: W2W2;

01N68W SEC 27: W2W2;

01N68W SEC 28: E2E2;

01N68W SEC 33: NENE;

01N68W SEC 34: NWNW

Weld County, Colorado

Dear Director Robbins:

Kerr-McGee Oil and Gas Onshore LP ("KMG") hereby certifies that a thirty (30) day notice has been given by certified mail to all mineral owners in the proposed wellbore spacing unit. We have not received any objections to such well location, proposed spacing unit, or additional producing formation. KMG hereby respectfully requests approval of this boundary well.

If you have any questions or issues regarding this permit, please contact me at (720) 929-3242.

Sincerely,

**Kerr-McGee Oil and Gas Onshore LP**

A handwritten signature in black ink, appearing to be 'EH' or 'Erin Hampe'.

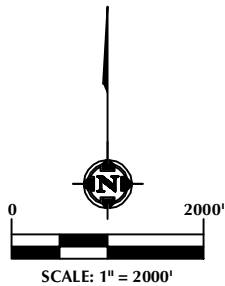
Erin Hampe  
Regulatory Analyst

Enclosure

DISTANCE FROM COMPLETED  
PORTION OF WELLBORE TO  
NEAREST UNIT BOUNDARY= 971'

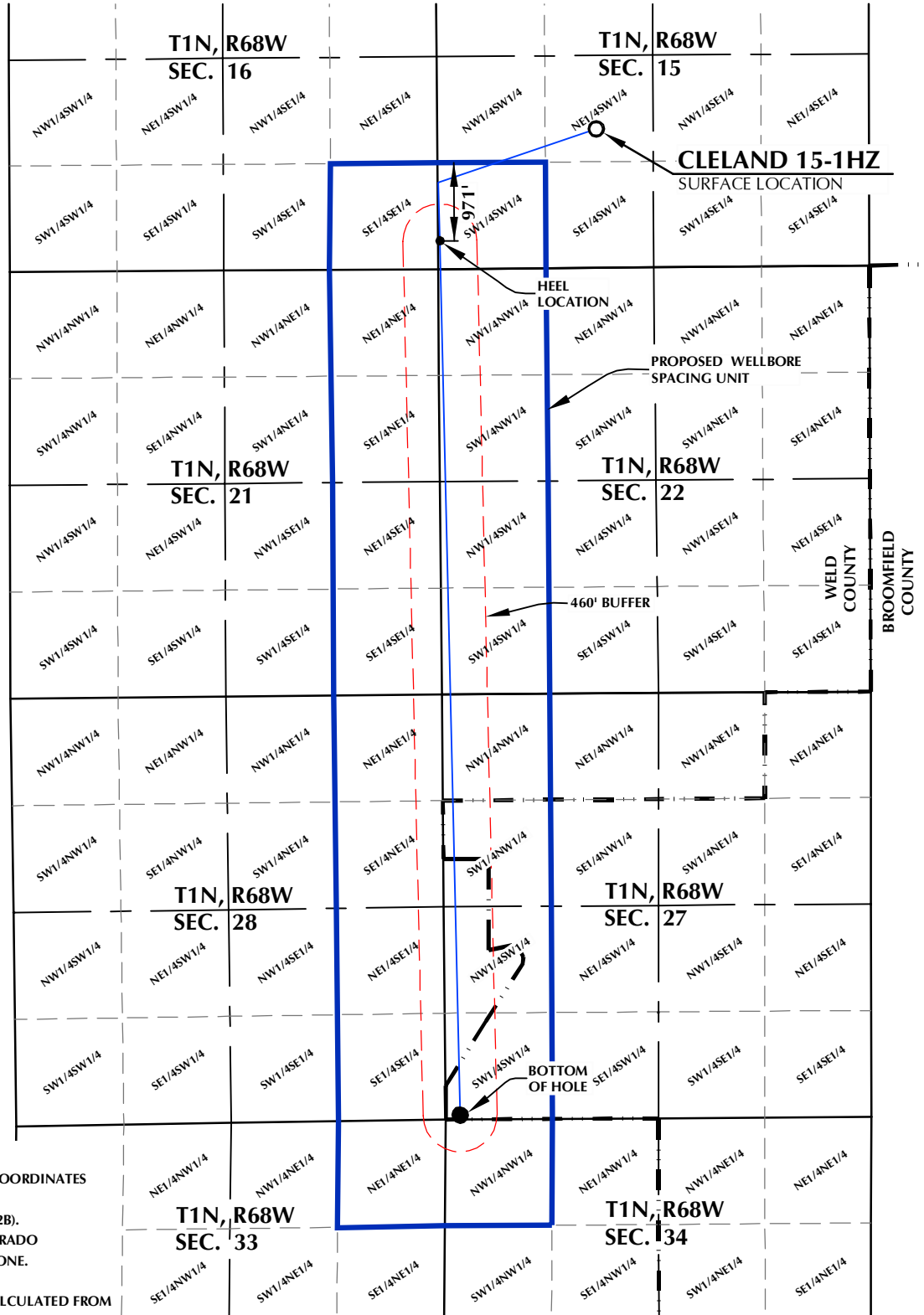
# CLELAND 15-1HZ WELLBORE SPACING UNIT

SURFACE LOCATION: NAD 83  
GROUND ELEVATION= 5151.0'  
LATITUDE= 40.048669°  
LONGITUDE= -104.992126°  
LATITUDE= 40°02'55.209"  
LONGITUDE= -104°59'31.655"  
HEEL LOCATION: NAD 83  
LATITUDE= 40.044874°  
LONGITUDE= -104.999091°  
LATITUDE= 40°02'41.547"  
LONGITUDE= -104°59'56.727"  
BOTTOM HOLE LOCATION: NAD 83  
LATITUDE= 40.015029°  
LONGITUDE= -104.998420°  
LATITUDE= 40°00'54.104"  
LONGITUDE= -104°59'54.312"



## NOTES:

1. DRAWING LATITUDE AND LONGITUDE COORDINATES ARE NAD 83 (2011)(EPOCH:2010).
2. ELEVATION BASED ON NAVD88 (GEOID12B).
3. BASIS OF BEARING DERIVED FROM COLORADO COORDINATE SYSTEM OF 1983 NORTH ZONE.
4. ALL MEASURED DISTANCES ARE GRID.  
COMBINED SCALE FACTOR: .99972060 CALCULATED FROM THE CENTER 1/4 CORNER OF SECTION 15, T1N, R68W.



## WELL PAD - CLELAND 11-15HZ

CLELAND 15-1HZ  
WELLBORE SPACING UNIT  
1729' FSL & 1978' FWL NESW (SURFACE)  
350' FSL & 27' FWL SWSW (HEEL)  
LOCATED IN SECTION 15, WELD COUNTY, COLORADO  
50' FSL & 177' FWL SWSW (BOTTOM)  
LOCATED IN SECTION 27  
T1N, R68W, 6TH P.M.  
BROOMFIELD COUNTY, COLORADO

**Kerr-McGee Oil &  
Gas Onshore L.P.**  
1099 18th Street  
Denver, Colorado 80202



## CONSULTING, LLC

SHERIDAN OFFICE  
1095 Saberton Avenue  
Sheridan, Wyoming 82801  
Phone 307-674-0609

LOVELAND OFFICE  
6706 North Franklin Avenue  
Loveland, Colorado 80538  
Phone 970-776-4331

DRAFTED BY:	LMO	CHECKED BY:	RKF
DATE DRAFTED:	3/25/19	DATE SURVEYED:	3/19/19
REVISED:		FILE NAME:	15-108